

34704-943

2/6/2014

1/10

UNITED STATES ENVIRONMENTAL PROTECTION AGENCY  
WASHINGTON, D.C. 20460



OFFICE OF  
CHEMICAL SAFETY AND  
POLLUTION PREVENTION

FEB - 6 2014

Mr. Premjit Halarnkar  
Loveland Products, Inc.  
P.O. Box 1286  
Greeley, CO 80632-1286

Subject: Amended label to add pollinator protection language  
Product Name: LPI Imidacloprid 2F Insecticide  
EPA Reg. No. 34704-943  
EPA Decision No. 486684  
Submission dated January 3, 2014; resubmission dated February 5, 2014

Dear Dr. Halarnkar:

The labeling referred to above, submitted in connection with registration under the Federal Insecticide, Fungicide, and Rodenticide Act is acceptable. A stamped copy of your labeling is enclosed for your records. This labeling supersedes all previously accepted labeling. You must submit one (1) copy of the final printed labeling before you release the product for shipment with the new labeling. See 40 CFR 156.10(a)(6).

Under 40 CFR 152.130(d), EPA may establish dates by which all product distributed or sold by the registrant must bear revised labeling. The following paragraphs set forth the schedule for ensuring that that your product bears revised labeling within a reasonable time period:

- Any product released for shipment after 2/28/14 must bear the new label.

If these conditions are not complied with, EPA will take appropriate action against this registration. If you have any questions please contact Julie Chao at 703-308-8735 or [chao.julie@epa.gov](mailto:chao.julie@epa.gov).

Regards,

A handwritten signature in black ink that reads "Venus Eagle".

Venus Eagle, Product Manager (01)  
Insecticide-Rodenticide Branch  
Registration Division (7505P)

2/10



GROUP 4A INSECTICIDE

# LPI IMIDACLOPRID 2F INSECTICIDE

For foliar and systemic insect control in turfgrass (including sod farms), landscape ornamentals, fruit and nut trees and interior plantscapes.

**ACTIVE INGREDIENT:**

Imidacloprid, 1-[(6-Chloro-3-pyridinyl)methyl]-N-nitro-2-imidazolidinimine .....	21.4%
<b>OTHER INGREDIENTS:</b> .....	<b>78.6%</b>
<b>TOTAL</b>	<b>100.0%</b>

Contains 2.0 pounds of imidacloprid per gallon.

## KEEP OUT OF REACH OF CHILDREN CAUTION

**PRECAUCION AL USUARIO:** Si usted no puede leer o entender ingles, no use este producto hasta que la etiqueta le haya sido explicada ampliamente.  
**(TO THE USER:** If you cannot read or understand English, do not use this product until the label has been fully explained to you.)

FIRST AID	
<b>If swallowed:</b>	<ul style="list-style-type: none"> <li>• Call a poison control center or doctor immediately for treatment advice.</li> <li>• Have person sip a glass of water if able to swallow.</li> <li>• Do not induce vomiting unless told to do so by a poison control center or doctor.</li> <li>• Do not give anything by mouth to an unconscious person.</li> </ul>
<b>If on skin or clothing:</b>	<ul style="list-style-type: none"> <li>• Take off contaminated clothing.</li> <li>• Rinse skin immediately with plenty of water for 15 to 20 minutes.</li> <li>• Call a poison control center or doctor for treatment advice.</li> </ul>
<b>If in eyes:</b>	<ul style="list-style-type: none"> <li>• Hold eye open and rinse slowly and gently with water for 15 to 20 minutes.</li> <li>• Remove contact lenses, if present, after the first 5 minutes, then continue rinsing eye.</li> <li>• Call a poison control center or doctor for treatment advice.</li> </ul>
<b>If inhaled:</b>	<ul style="list-style-type: none"> <li>• Move person to fresh air.</li> <li>• If person is not breathing, call 911 or an ambulance, then give artificial respiration, preferably mouth-to-mouth, if possible.</li> <li>• Call a poison control center or doctor for further treatment advice.</li> </ul>
<p><b>NOTE TO PHYSICIAN:</b> No specific antidote is available. Treat the patient symptomatically. <b>FOR A MEDICAL EMERGENCY INVOLVING THIS PRODUCT CALL: 1-866-944-8565.</b></p>	

**SHAKE WELL BEFORE USING**

EPA REG. NO. 34704-943

EPA EST. NO. 34704-MS-001

NET CONTENTS 1.0 GAL (3.78 L)

ACCEPTED  
FEB - 6 2014

Under the Federal Insecticide, Fungicide,  
and Rodenticide Act, as amended, for the  
pesticide registered under:

EXP 12/13 Bees

EPA. Reg. No: 34704-943

3/10

**LPI IMIDACLOPRID 2F INSECTICIDE  
EPA REG. NO. 34704-943**

**PRECAUTIONARY STATEMENTS  
HAZARDS TO HUMANS AND DOMESTIC ANIMALS**

**CAUTION.** Harmful if swallowed or absorbed through skin. Avoid contact with skin, eyes, or clothing. Wash thoroughly with soap and water after handling. Keep children or pets off treated area until spray is dry.

**Applicators and other handlers must wear:**

- Long-sleeved shirt and long pants,
- Chemical resistant gloves made of any waterproof material such as barrier laminate, butyl rubber, nitrile rubber, neoprene rubber, natural rubber, polyethylene, polyvinylchloride (PVC) or viton, and
- Shoes plus socks.

**User Safety Requirements**

Follow manufacturer's instructions for cleaning/maintaining personal protective equipment, PPE. If no such instructions for washables, use detergent and hot water. Keep and wash PPE separately from other laundry.

**Engineering Controls Statements:**

When handlers use closed systems, enclosed cabs, or aircraft in a manner that meets the requirements listed in the Worker Protection Standard (WPS) for agricultural pesticides [40 CFR 170.240(d)(4-6)], the handler PPE requirements may be reduced or modified as specified in the WPS.

**USER SAFETY RECOMMENDATIONS**

**Users should:**

- Wash hands before eating, drinking, chewing gum, using tobacco or using the toilet.
- Remove clothing immediately if pesticide gets inside. Then wash thoroughly and put on clean clothing.
- Remove PPE immediately after handling this product. Wash the outside of gloves before removing. As soon as possible, wash thoroughly and change into clean clothing.

**ENVIRONMENTAL HAZARDS**

This product is highly toxic to wildlife and aquatic invertebrates. Do not apply directly to water, or to areas where surface water is present or to intertidal areas below the mean high water mark. Do not contaminate water when disposing of equipment washwaters.

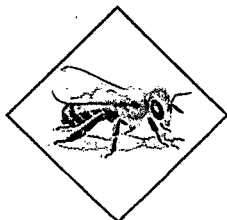
This product is highly toxic to bees exposed to direct treatment or residues on blooming crops/plants or weeds. Do not apply this product or allow it to drift to blooming crops/plants or weeds if bees are foraging.

This chemical demonstrates the properties and characteristics associated with chemicals detected in groundwater. The use of this chemical in areas where soils are permeable, particularly where the water table is shallow, may result in groundwater contamination.

4/10

LPI IMIDACLOPRID 2F INSECTICIDE  
EPA REG. NO. 34704-943

**PROTECTION OF POLLINATORS**



**APPLICATION RESTRICTIONS EXIST FOR THIS PRODUCT BECAUSE OF RISK TO BEES AND OTHER INSECT POLLINATORS. FOLLOW APPLICATION RESTRICTIONS FOUND IN THE DIRECTIONS FOR USE TO PROTECT POLLINATORS.**



**Look for the bee hazard icon in the Directions for Use for each application site for specific use restrictions and instructions to protect bees and other insect pollinators.**

**This product can kill bees and other insect pollinators.**

Bees and other insect pollinators will forage on plants when they flower, shed pollen, or produce nectar.

Bees and other insect pollinators can be exposed to this pesticide from:

- Direct contact during foliar applications, or contact with residues on plant surfaces after foliar applications.
- Ingestion of residues in nectar and pollen when the pesticide is applied as a seed treatment, soil, tree injection, as well as foliar applications.

When Using This Product Take Steps To:

- Minimize exposure of this product to bees and other insect pollinators when they are foraging on pollinator attractive plants around the application site.
- Minimize drift of this product on to beehives or to off-site pollinator attractive habitat. Drift of this product onto beehives or off-site to pollinator attractive habitat can result in bee kills.

Information on protecting bees and other insect pollinators may be found at the Pesticide Environmental Stewardship website at: <http://pesticidestewardship.org/PollinatorProtection/Pages/default.aspx>.

Pesticide incidents (for example, bee kills) should immediately be reported to the state/tribal lead agency.

For contact information for your state, go to: [www.aapco.org/officials.html](http://www.aapco.org/officials.html). Pesticide incidents should also be reported to the National Pesticide Information Center at: [www.npic.orst.edu](http://www.npic.orst.edu) or directly to EPA at: [beekill@epa.gov](mailto:beekill@epa.gov)

**DIRECTIONS FOR USE**

It is a violation of Federal law to use this product in a manner inconsistent with its labeling.

**See individual crops for specific pollinator protection application restrictions. If none exist under the specific crop, for foliar applications, follow these application directions for food/feed crops and commercially grown ornamentals that are attractive to pollinators, and for non-agricultural use sites:**



**FOR FOOD/FEED CROPS AND COMMERCIALY GROWN ORNAMENTALS NOT UNDER CONTRACT FOR POLLINATION SERVICES BUT ARE ATTRACTIVE TO POLLINATORS**

Do not apply this product while bees are foraging. Do not apply this product until flowering is complete and all petals have fallen unless one of the following conditions is met:

- The application is made to the target site after sunset
- The application is made to the target site when temperatures are below 55 °F
- The application is made in accordance with a government-initiated public health response
- The application is made in accordance with an active state-administered apiary registry program where beekeepers are notified no less than 48-hours prior to the time of the planned application so that the bees can be removed, covered or otherwise protected prior to spraying

5/10

**LPI IMIDACLOPRID 2F INSECTICIDE**  
**EPA REG. NO. 34704-943**

- The application is made due to an imminent threat of significant crop loss, and a documented determination consistent with an IPM plan or predetermined economic threshold is met. Every effort should be made to notify beekeepers no less than 48-hours prior to the time of the planned application so that the bees can be removed, covered or otherwise protected prior to spraying.



**FOR NON-AGRICULTURAL USE SITES**

Do not apply LPI Imidacloprid 2F Insecticide while bees are foraging. Do not apply LPI Imidacloprid 2F Insecticide to plants that are flowering. Only apply after all flower petals have fallen off.

Do not apply this product in a way that will contact workers or other persons, either directly or through drift. Only protected handlers may be in the area during application. For any requirements specific to your State or Tribe, consult the agency responsible for pesticide regulation.

**AGRICULTURAL USE REQUIREMENTS**

Use this product only in accordance with its labeling and with the Worker Protection Standard, 40 CFR part 170. This Standard contains requirements for the protection of agricultural workers on farms, forests, nurseries, and greenhouses, and handlers of agricultural pesticides. It contains requirements for training, decontamination, notification and emergency assistance. It also contains specific instructions and exceptions pertaining to the statements on this label about personal protective equipment (PPE) and restricted-entry interval. The requirements in this box only apply to uses of this product that are covered by the Worker Protection Standard.

**Do not enter or allow worker entry into treated areas during the restricted-entry interval (REI) of 12 hours.**

**Exception:** If the product is applied by drenching, the Worker Protection Standard, under certain circumstances, allows workers to enter the treated area if there will be no contact with anything that has been treated.

PPE required for early entry to treated areas that is permitted under the Worker Protection Standard and that involves contact with anything that has been treated, such as plants, soil, or water, is:

- Coveralls,
- Chemical resistant gloves made of any waterproof material such as barrier laminate, butyl rubber, nitrile rubber, neoprene rubber, natural rubber, polyethylene, polyvinylchloride (PVC) or viton and
- Shoes plus socks.

**NON-AGRICULTURAL USE REQUIREMENTS**

The requirements in this box apply to uses of this product that are NOT within the scope of the Worker Protection Standard for agriculture pesticides (40 CFR part 170). The WPS applies when this product is used to produce agricultural plants on farms (including sod farms), forests, nurseries or greenhouses.

**NON WPS USES:** Applicators and other handlers who handle this product for any use not covered by the Worker Protection Standard (40 CFR part 170) - in general, only agricultural plant uses are covered by the WPS, must wear shirt and pants, gloves and shoes plus socks.

**Keep children and pests off treated area until dry.**

**APPLICATION TO TURFGRASS**

LPI Imidacloprid 2F Insecticide can be used for the control of soil inhabiting pests of turfgrass, such as Northern & Southern masked chafers, *Cyclocephala borealis*, *C. immaculata*, and/or *C. lurida*; Asiatic garden beetle, *Maladera castanea*;

European chafer, *Rhizotrogus majalis*; Green June beetle, *Cotinis nitida*; May or June beetle, *Phyllophaga* spp.; Japanese beetle, *Popillia japonica*; Oriental beetle, *Anomala orientalis*; Billbugs, *Sphenophorus* spp.; Annual bluegrass weevil, *Listronotus* spp.; Black turfgrass ataenius, *Ataenius spretulus* and *Aphodius* spp.; European crane fly, *Tipula paludosa*; and mole crickets, *Scapteriscus* spp.. LPI Imidacloprid 2F Insecticide can also be used for suppression of cutworms and chinch bugs. LPI Imidacloprid 2F Insecticide can be used as directed on turfgrass in sites such as home lawns, business and office complexes, shopping complexes, multi-family residential complexes, golf courses, airports, cemeteries, parks, playgrounds, athletic fields and sod farms.

The active ingredient in LPI Imidacloprid 2F Insecticide has sufficient residual activity so that applications can be made preceding the egg laying activity of the target pests. High levels of control can be achieved when applications are made preceding or during the egg laying period. The need for an application can be based on historical monitoring of the site, previous records or experiences, current season adult trapping or other methods. Optimum control will be achieved when applications are made prior to egg hatch of the target pests, followed by sufficient irrigation or rainfall to move the active ingredient through the thatch.

**Restrictions:**

Do not apply when turfgrass areas are waterlogged or the soil is saturated with water. Adequate distribution of the active ingredient cannot be achieved when these conditions exist. The treated turf area must be in such a condition that the rainfall or irrigation will penetrate vertically in the soil profile. Applications cannot exceed a total of 1.6 pints (0.4 pound of active ingredient) per acre per year. Do not allow product to contact plants in bloom if bees are foraging in the treatment area.

6/10

**LPI IMIDACLOPRID 2F INSECTICIDE  
EPA REG. NO. 34704-943**

**APPLICATION EQUIPMENT FOR USE ON TURFGRASS**

Apply LPI Imidacloprid 2F Insecticide in sufficient water to provide adequate distribution in the treated area. The use of accurately calibrated equipment normally used for the application of turfgrass insecticides is required. Use equipment which will produce a uniform, coarse droplet spray, using a low pressure setting to eliminate off target drift. Check calibration periodically to ensure that equipment is working properly.

**APPLICATION TO ORNAMENTALS**

LPI Imidacloprid 2F Insecticide is for use on ornamentals in commercial and residential landscapes and interior plantscapes. LPI Imidacloprid 2F Insecticide is a systemic product and will be translocated upward into the plant system from root uptake. To assure optimum effectiveness, the product must be placed where the growing portion of the target plant can absorb the active ingredient. The addition of a nitrogen containing fertilizer, where applicable, into the solution may enhance the uptake of the active ingredient. Application can be made by foliar application or soil applications; including soil injection, drenches, and broadcast sprays. Foliar applications offer locally systemic activity against insect pests.

When making soil applications to plants with woody stems, systemic activity will be delayed until the active ingredient is translocated throughout the plant. In some cases, this translocation delay could take 60 days or longer. For this reason, applications should be made prior to anticipated pest infestation to achieve optimum levels of control.

**Restrictions:**

Not for use in commercial greenhouses, nurseries, or on grasses grown for seed, or on commercial fruit and nut trees. For outdoor ornamentals, broadcast applications cannot exceed a total of 1.6 pints (0.4 pound of active ingredient) per acre per year.

**Ant Management Programs**

Use LPI Imidacloprid 2F Insecticide to control Aphids, Scale insects, Mealybugs and other sucking pests on ornamentals to limit the honeydew available as a food source for ant populations. LPI Imidacloprid 2F Insecticide applications can then be supplemented with residual sprays, bait placements or other ant control tactics to further reduce the pest population.

**APPLICATION EQUIPMENT FOR FOLIAR APPLICATIONS**

LPI Imidacloprid 2F Insecticide mixes readily with water and may be used in many types of application equipment. Mix product with the required amount of water and apply as desired dependent upon the selected use pattern.

When making foliar applications on hard to wet foliage such as holly, pine, or ivy, the addition of a spreader/sticker is recommended. If concentrate or mist type spray equipment is used, an equivalent amount of product should be used on the area sprayed, as would be used in a dilute application.

LPI Imidacloprid 2F Insecticide has been found to be compatible with commonly used fungicides, miticides, liquid fertilizers, and other commonly used insecticides. Check physical compatibility using the correct proportion of products in a small jar test if local experience is unavailable.

Do not apply through any irrigation system.

7/10

**LPI IMIDACLOPRID 2F INSECTICIDE**  
**EPA REG. NO. 34704-943**

**APPLICATION INSTRUCTIONS**

<b>SITE</b>	<b>PEST</b>	<b>DOSAGE</b>	<b>INSTRUCTIONS</b>
Turf grasses, including sod	<b>Larvae of:</b> Annual bluegrass weevil Asiatic garden beetle Billbugs Black turfgrass ataeenius Cutworms (suppression) European chafer European crane fly Green June beetle Japanese beetle <i>Phyllophaga</i> spp. Southern masked chafer	1.25 to 1.6 pt/A  or  0.46 to 0.6 fl oz (14.0 to 17.0 mL)/ 1000 sq ft	For optimum control of Grubs, Billbugs, Annual blue grass weevil, and European crane fly, make application prior to egg hatch of the target pest.  Be sure to read "Application Equipment" section of this label.
	Chinchbugs (suppression) Mole crickets	1.6 pt/A  or  0.6 fl oz (17 mL)/ 1000 sq ft	For suppression of Chinchbugs, make application prior to or during the hatching of the first instar Nymphs. For control of Mole crickets, make application prior to or during the peak egg hatch period. When adults or large Nymphs are present and actively tunneling, LPI Imidacloprid 2F Insecticide application should be accompanied by a curative insecticide. Follow label instructions for other insecticides when tank mixing.

Consult your local turf, state Agricultural Experiment Station, or State Extension Service Specialist for more specific information regarding timing of application.

**PRECAUTIONS AND RESTRICTIONS:** For optimum control, irrigation or rainfall should occur within 24 hours after application to move the active ingredient through the thatch. Do not apply more than 1.6 pints (0.4 pound of active ingredient) per acre per year. Avoid mowing turf or lawn area until after sufficient irrigation or rainfall has occurred so that uniformity of application will not be affected. Do not allow product to contact plants in bloom if bees are foraging in the treatment area.

**APPLICATION INSTRUCTIONS**

For use only in and around industrial and commercial buildings and residential areas.

<b>SITE</b>	<b>PEST</b>	<b>DOSAGE</b>	<b>INSTRUCTIONS</b>
Trees Shrubs Evergreens Flowers Foliage plants Groundcovers Interior plantscapes	Adelgids Aphids Japanese beetles Lace bugs Leaf beetles (including Elm and Viburnum leaf beetles) Leafhoppers (including Glassy-winged sharpshooter) Mealybugs Psyllids Sawfly larvae Thrips (suppression) Whiteflies	1.5 fl oz (45.0 mL)/ 100 gal of water	<b>Foliar Applications:</b> Start treatments prior to establishment of high pest populations and reapply on as needed basis.
	White grub larvae (such as Japanese beetle larvae, Chafers, <i>Phyllophaga</i> spp., Asiatic beetle, Oriental beetle) garden	0.46 to 0.6 fl oz (14.0 to 17.0 mL)/ 1000 sq ft	<b>Broadcast Applications:</b> Mix required amount of product in sufficient water to uniformly and accurately cover the area being treated. Do not use less than 2.0 gal of water/1000 sq ft. For optimum control, irrigate thoroughly to incorporate LPI Imidacloprid 2F into the upper soil profile. Refer to use direction specific for FLOWERS and GROUND COVERS concerning additional use directions.

8/10

**LPI IMIDACLOPRID 2F INSECTICIDE  
EPA REG. NO. 34704-943**

**APPLICATION INSTRUCTIONS - TREES, SHRUBS, FLOWERS AND GROUNDCOVERS**

For use only in and around industrial and commercial buildings and residential areas, and state, national, and private wooded and forested areas for the insect pests listed below.

SITE	PEST	DOSAGE	INSTRUCTIONS
Trees	Adelgids Aphids Armored scales (suppression) Black vine weevil larvae Eucalyptus longhorned borer Flatheaded borers (including Alder and Bronze birch and borer) Japanese beetles Lace bugs Leaf beetles (including Elm and Viburnum leaf beetles) Leafhoppers (including Glassy-winged sharpshooter) Leafminers Mealybugs Pine tip moth larvae Psyllids Royal palm bugs Sawfly larvae Soft scales Thrips (suppression) White grub larvae Whiteflies	0.1 to 0.2 fl oz (3.0 to 6.0 mL)/inch of trunk diameter (DBH)	<b>Soil Injection:</b> GRID SYSTEM: Holes should be spaced on 2.5 ft centers, in a grid pattern, extending to the drip line of the tree. CIRCLE SYSTEM: Apply in holes evenly spaced in circles, (use more than 1 circle dependent upon the size of the tree) beneath the drip line of the tree extending in from that line. BASAL SYSTEM: Space injection holes evenly around the base of the tree trunk no more than 6 to 12 inches out from the base. Mix required dosage in sufficient water to inject an equal amount of solution in each hole. Maintain a low pressure and use sufficient solution for distribution of the liquid into the treatment zone. For optimum control, keep the treated area moist for 7 to 10 days. Do not use less than 4 holes/tree. <b>No Soil Injection Applications Allowed in Nassau or Suffolk Counties of New York.</b> <b>Soil Drench:</b> Uniformly apply the dosage in no less than 10.0 gal of water/1000 sq ft as a drench around the base of the tree, directed to the root zone. Remove plastic or any other barrier that will stop solution from reaching the root zone. <b>For Control of Specified Borers:</b> Application to trees already heavily infested may not prevent the eventual loss of the trees due to existing pest damage and the tree stress.
Shrubs		0.1 to 0.2 fl oz (3.0 to 6.0 mL)/ft of shrub ht	<b>Soil Injection:</b> Apply to individual plants using dosage indicated. Mix required dosage in sufficient water to inject an equal amount of solution in each hole. Maintain a low pressure and use sufficient solution for distribution of the liquid into the treatment zone. Keep the treated area moist for 7 to 10 days. Do not use less than 4 holes/shrub. <b>No Soil Injection Applications Allowed in Nassau or Suffolk Counties of New York.</b> <b>Soil Drench:</b> Uniformly apply the dosage in no less than 10.0 gal of water/1000 sq ft as a drench around the base of the tree, directed to the root zone. Remove plastic or any other barrier that will stop solution from reaching the root zone.
Flowers and Groundcovers		0.46 to 0.6 fl oz (14.0 to 17.0 mL)/1000 sq ft	Apply as a broadcast treatment and incorporate into the soil before planting or apply prior to bloom or after all flower petals have dropped for established plants. If application is made to established plants, optimum control will be attained if area is irrigated thoroughly after application.

**APPLICATION INSTRUCTIONS**

For use only in and around residential areas

SITE	PEST	RATE/APPLICATION	
Pome fruits Apple Crabapple Loquat Mayhew Pear Pear (oriental) Quince	Aphids (except Woolly apple aphid) Leafhoppers (including Glassy winged sharpshooter) Leafminer Mealybugs* San Jose scale*	1.5 fl oz (45 mL)/100 gal of water	6.0 fl oz/A <sup>1</sup>

*Cont'd. next page*



9/10

**LPI IMIDACLOPRID 2F INSECTICIDE**  
**EPA REG. NO. 34704-943**

Apply specified dosage as foliar spray as needed after petal-fall is complete.

For control of rosy apply aphid, apply prior to leafrolling caused by the pest.

For first generation Leafminer control, make first application as soon as petal-fall is complete. Greatest Leafminer control will result from the earliest population application. For second and succeeding generations of Leafminer, optimal control is obtained from applications made early in the adult flight against egg and early instar larvae. A second application may be required 10 days later if severe pressure continues or if generations are overlapping. A single application may result in suppression only. LPI Imidacloprid 2F Insecticide will not control late stage larvae.

For San Jose scale, time application to the crawler stage. Treat each generation.

For late season (preharvest) control of leafhopper species, apply LPI Imidacloprid 2F Insecticide while most Leafhoppers are in the nymphal stage.

For optimal control of Mealybug, insure good spray coverage of the trunk and scaffolding limbs or other resting sites of the Mealybug.

**Restrictions:**

Do not apply more than 6.0 fluid ounces per acre in a single application. Do not make more than 5 applications. Allow 10 or more days between applications. Allow at least 7 days between last application and harvest.

\*Not for use in California for control on pears.

SITE	PEST	RATE/APPLICATION	
Pecans*	Yellow pecan aphid Black margined aphid Pecan leaf phylloxera Pecan spittlebug Pecan stem phylloxera	1.5 fl oz (45 mL)/100 gal of water	6.0 fl oz/A <sup>1</sup>

Make foliar applications as pests begin to build before populations become extreme. Two applications at a 10 to 14 day interval may be required to achieve control. Scout and retreat if needed.

Thorough uniform coverage of foliage is necessary for optimal control. Addition of an organosilicone-based spray adjuvant at a rate not to exceed the adjuvant manufacturer's specified use rate may improve coverage.

**Restrictions:**

Do not apply more than a total of 18.0 fluid ounces of LPI Imidacloprid 2F Insecticide per acre per year. Do not make more than 3 applications.

Allow 10 or more days between applications.

<sup>1</sup>The amount of LPI Imidacloprid 2F Insecticide required per acre will depend on tree size and volume of foliage present. The rate per acre is based on a standard of 400 gallons of dilute spray solution per acre for large trees.

\*Use on pecans not permitted in California unless directed by state-specific 24(c) labeling.

**APPLICATION INSTRUCTIONS**

For use only in and around industrial and commercial buildings and residential areas.

SITE	PEST	RATE/APPLICATION	
Grapes	Leafhoppers (including Glassy winged sharpshooter) Mealybugs	1.5 fl. oz. (45 mL)/100 gal of water	3.0 fl. oz/A (90 mL/A)

Apply specified dosage as a foliar spray using 200 gallons of water per acre. Do not apply more than a total of 6.0 ounces of LPI Imidacloprid 2F Insecticide per acre per year. Allow at least 14 days between applications. Applications may be applied up to and including day of harvest.

**RESTRICTIONS**

Do not graze treated areas or use clippings from treated areas for feed or forage. Avoid runoff or puddling of irrigation water following application. Keep children and pets off treated area until dry. Avoid application of LPI Imidacloprid 2F Insecticide to areas which are water logged or saturated, which will not allow penetration into the root zone of the plant. Do not apply more than 1.6 pints (0.4 pound of active ingredient) per acre per year.

Treated areas may be replanted with any crop specified on an imidacloprid label, or with any crop for which a tolerance exists for the active ingredient.

10/10

**LPI IMIDACLOPRID 2F INSECTICIDE  
EPA REG. NO. 34704-943**

For crops not listed on an imidacloprid label, or for crops for which no tolerances for the active ingredient have been established, a 12-month plant-back interval must be observed.

**STORAGE AND DISPOSAL**

Do not contaminate water, food, or feed by storage or disposal.

**PESTICIDE STORAGE:** Store in a cool, dry place and in such a manner as to prevent cross contamination with other pesticides, fertilizers, food, and feed. Store in original container and out of the reach of children, preferably in a locked storage area. Handle and open container in a manner as to prevent spillage. If the container is leaking, invert to prevent leakage. If container is leaking or material spilled for any reason or cause, carefully dam up spilled material to prevent runoff. Refer to Precautionary Statements on label for hazards associated with the handling of this material. Do not walk through spilled material. Absorb spilled material with absorbing type compounds and dispose of as directed for pesticides below. In spill or leak incidents, keep unauthorized people away.

**PESTICIDE DISPOSAL:** Wastes resulting from the use of this product may be disposed of on site or at an approved waste disposal facility.

**CONTAINER HANDLING: Nonrefillable container.** Do not reuse this container to hold materials other than pesticides or dilute pesticides (rinsate). After emptying and cleaning, it may be allowable to temporarily hold rinsate or other pesticide-related materials in the container. Contact your state regulatory agency to determine allowable practices in your state. Once cleaned, some agricultural plastic pesticide containers can be taken to a container collection site or picked up for recycling. To find the nearest site, contact your chemical dealer or manufacturer, or contact The Agricultural Container Recycling Council (ACRC) at [www.acrcycle.org](http://www.acrcycle.org). If not recycled, then puncture and dispose of in a sanitary landfill, or incineration, or if allowed by state and local authorities, by burning. If burned, stay out of smoke.

Triple rinse or pressure rinse container (or equivalent) promptly after emptying.

**For packages up to 5 gallons: Triple rinse as follows:** Empty the remaining contents into application equipment or a mix tank and drain for 10 seconds after the flow begins to drip. Fill the container 1/4 full with water and recap. Shake for 10 seconds. Pour rinsate into application equipment or a mix tank or store rinsate for later use or disposal. Drain for 10 seconds after the flow begins to drip. Repeat this procedure two more times. **Pressure rinse as follows:** Empty the remaining contents into application equipment or a mix tank and continue to drain for 10 seconds after the flow begins to drip. Hold container upside down over application equipment or mix tank or collect rinsate for later use or disposal. Insert pressure rinsing nozzle in the side of the container, and rinse at about 40 PSI for at least 30 seconds. Drain for 10 seconds after the flow begins to drip.

**For help with any spill, leak, fire or exposure involving this material, call day or night CHEMTREC - 1-800-424-9300.**

**CONDITIONS OF SALE AND LIMITATION OF WARRANTY AND LIABILITY**

**BEFORE BUYING OR USING THIS PRODUCT**, read the entire Directions for Use and the following Conditions of Sale and Limitation of Warranty and Liability. By buying or using this product, the buyer or user accepts the following Conditions of Sale and Limitation of Warranty and Liability, which no employee or agent of LOVELAND PRODUCTS, INC. or the seller is authorized to vary in any way.

Follow the Directions for Use of this product carefully. It is impossible to eliminate all risks inherently associated with the use of this product. Crop or other plant injury, ineffectiveness, or other unintended consequences may result from such risks as weather or crop conditions, mixture with other chemicals not specifically identified in this product's label, or use of this product contrary to the label instructions, all of which are beyond the control of LOVELAND PRODUCTS, INC. and the seller. The buyer or user of this product assumes all such inherent risks.

Subject to the foregoing inherent risks, LOVELAND PRODUCTS, INC. warrants that this product conforms to the chemical description on the label and is reasonably fit for the purposes stated in the Directions for Use when the product is used in strict accordance with such Directions for Use under normal conditions of use. EXCEPT AS WARRANTED IN THIS LABEL AND TO THE EXTENT CONSISTENT WITH APPLICABLE LAW, THIS PRODUCT IS SOLD "AS IS," AND LOVELAND PRODUCTS, INC. MAKES NO OTHER WARRANTY, EXPRESS OR IMPLIED, INCLUDING BUT NOT LIMITED TO MERCHANTABILITY, FITNESS FOR A PARTICULAR PURPOSE, OR ELIGIBILITY OF THIS PRODUCT FOR ANY PARTICULAR TRADE USAGE.

IN THE UNLIKELY EVENT THAT BUYER OR USER BELIEVES THAT LOVELAND PRODUCTS, INC. HAS BREACHED A WARRANTY CONTAINED IN THIS LABEL AND TO THE EXTENT REQUIRED BY APPLICABLE LAW, BUYER OR USER MUST SEND WRITTEN NOTICE OF ITS CLAIM TO THE FOLLOWING ADDRESS: LOVELAND PRODUCTS, INC., ATTENTION: LAW DEPARTMENT, P.O. BOX 1286, GREELEY, CO 80632-1286.

TO THE EXTENT CONSISTENT WITH APPLICABLE LAW, THE BUYER'S OR USER'S EXCLUSIVE REMEDY FOR ANY INJURY, LOSS, OR DAMAGE RESULTING FROM THE HANDLING OR USE OF THIS PRODUCT, INCLUDING BUT NOT LIMITED TO CLAIMS OF BREACH OF WARRANTY OR CONTRACT, NEGLIGENCE, STRICT LIABILITY, OR OTHER TORTS, SHALL BE LIMITED TO ONE OF THE FOLLOWING, AT THE ELECTION OF LOVELAND PRODUCTS, INC. OR THE SELLER: DIRECT DAMAGES NOT EXCEEDING THE PURCHASE PRICE OF THE PRODUCT OR REPLACEMENT OF THE PRODUCT. TO THE EXTENT CONSISTENT WITH APPLICABLE LAW, LOVELAND PRODUCTS, INC. AND THE SELLER SHALL NOT BE LIABLE TO THE BUYER OR USER OF THIS PRODUCT FOR ANY CONSEQUENTIAL, SPECIAL, OR INDIRECT DAMAGES, OR DAMAGES IN THE NATURE OF A PENALTY.

**FORMULATED FOR  
LOVELAND PRODUCTS, INC.  
P.O. BOX 1286, GREELEY, COLORADO 80632-1286**