

**PRECAUTIONARY STATEMENTS  
HAZARDS TO HUMANS  
AND DOMESTIC ANIMALS**

**WARNING**

May be fatal if swallowed, inhaled or absorbed through skin. Wash thoroughly with soap and water. If on skin and after handling, and before eating, drinking or using tobacco. Avoid breathing spray mist. Avoid contact with eyes and skin. Wear protective clothing and rubber gloves. Remove contaminated clothing and wash before reuse. Avoid contamination of feed and foodstuffs. Do not use on household pets or humans. Do not permit children or pets to go onto sprayed areas until the spray has completely dried. Do not use in the home. Do not contaminate ornamentals, fish ponds.

**STATEMENT OF PRACTICAL  
TREATMENT**

If swallowed, call a physician or Poison Control Center immediately. Do NOT induce vomiting. Vomiting may cause aspiration pneumonia. If inhaled, remove victim to fresh air and apply artificial respiration if indicated. If on skin, wash promptly with soap and water. Rinse thoroughly. If in eyes, rinse eyes with water and call a physician immediately. NOTE TO PHYSICIAN: Solvent presents aspiration hazard if taken internally. Gastric lavage is indicated. Product contains an organophosphate insecticide. If symptoms of cholinesterase inhibition are present, atropine by injection is antidotal. 2-PAM is also antidotal and may be administered, but only in conjunction with atropine.

**ENVIRONMENTAL HAZARDS**

This product is toxic to fish, birds, and other wildlife. Shrimp and crabs may be killed at application rates. Birds feeding on treated areas may be killed. Do not



**THIS PRODUCT MUST NOT BE USED ON  
GOLF COURSES AND SOD FARMS.**

**DIAZINON 25  
LAWN INSECTICIDE**

**PROTECTS LAWNS:** Bluegrass, Bent, Bermuda, Fescue, St. Augustine  
**CONTROLS:** Ants, Chinch Bugs, Cutworms, Grubs, Mites, Sod Webworms, and many others as listed in booklet

**ACTIVE INGREDIENTS**

Diazinon (0,0 diethyl O-(4-isopropyl-6-methyl-4-pyrimidinyl) phosphorothioate)	25.00%
Aromatic Petroleum Distillate	55.98%
INERT INGREDIENTS	19.02%
<b>TOTAL</b>	<b>100.00%</b>

**KEEP OUT OF REACH OF CHILDREN  
WARNING**

See Side Panels For Additional Precautionary Statements  
**NET CONTENTS:** \_\_\_\_\_

© CLEAN CROP is a Registered T.M. of United Agri Products, Inc.  
20842 06Y88 A

apply directly to water. Do not apply when weather conditions favor drift from treated areas. Do not contaminate water by cleaning of equipment or disposal of wastes. Apply this product only as specified on this label. This pesticide is highly toxic to bees exposed to direct treatment or to residues remaining on the treated area. Do not apply when bees are actively visiting the crop cover crop, or weeds blooming in the treatment area. Applications should be timed to provide the maximum possible interval between treatment and the next period of bee activity.

**PHYSICAL OR CHEMICAL HAZARDS**

Do not, use, pour, spill or store near heat or open flame.

SEE ATTACHED BOOKLET FOR ADDITIONAL PRECAUTIONARY STATEMENTS. READ COMPLETE USE DIRECTIONS IN BOOKLET.

**STORAGE AND DISPOSAL**

**STORAGE:** Store in original container only, preferably in a locked area. Keep container tightly closed when not in use. Store in a cool, dry place. Do not use food or drink containers for mixing or storage.

**PESTICIDE DISPOSAL:** Securely wrap original container in several layers of newspaper and discard in trash.

**CONTAINER DISPOSAL:** Do not reuse container. Wrap container in several layers of newspaper and put in trash.

**EPA REG. NO. 34704-446**

**EPA EST. NO. \_\_\_\_\_**

**FORMULATED FOR**

**PLATTE CHEMICAL COMPANY, INC.**

**150 SO. MAIN STREET FREMONT, NEBRASKA 68025**



**1,000 Sq. Ft.**

**8 ounces**

NOT FOR SALE  
In accordance with EPA  
Based on direct label  
7/15/88

After applying 8 ounces of this product to 1000 square feet of lawn, remove finger from hole on right side of nozzle. Apply water only, evenly, over treated area for approximately 3 minutes. To continue application of product to another area of lawn, place finger over hole on right side of nozzle to start siphon.

(1 fl. oz in 3 gals. of water covers 125 sq. ft.)

244 X 4 1/4

This product is for use on golf courses



LAWN

Protects Lawns: Bluegrass, Fescue, St. Augustine, Controls: Ants, Chinch bugs, and many others as listed in many others as listed in

KEEP ON REACH OF C

WARN

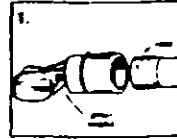
See Inside Booklet Precautionary

EPA REG. NO.

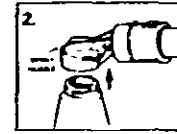
• CLEAN CROP is a United Agri Pro

11

## HOW TO USE SPRAYER

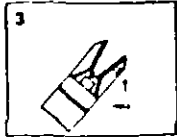


Connect spray nozzle to hose. Rubber washer should be checked for proper position. Determine area to be treated. For example, 1,000 sq. ft. = an area measuring 20 ft. X 50 ft. When applying, check area being treated against measuring guide on side panel. Spray pattern can be tested (without discharging product) by not placing finger over hole on right side of nozzle.

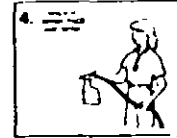


Remove bottle cap and screw bottle into nozzle (save bottle cap for storage after use). Check siphon tube for proper position. Do not squeeze bottle while attaching nozzle, or during application as contents may discharge. To store unused product: Turn off water supply at tap. Remove bottle from sprayer and replace original bottle cap. Remove nozzle from hose and rinse in clear water.

13



Hold sprayer attached to hose in one hand and turn on the water at the tap. Clear water will discharge when water is turned on at tap. Let clear water run until all air is discharged from hose. When ready to treat, place finger over hole on right side of nozzle and this product will mix automatically at the proper ratio. To stop flow of product, remove finger from hole to break siphon action.



While holding sprayer at waist level, point in direction away from face and body. Walk back and forth at a brisk, steady pace. Overlap slightly for uniform coverage. Marks on right side panel indicate square feet coverage. For certain areas, it may be more convenient to stand still and direct spray across treated area in a broad sweeping motion.

15

DO NOT INTERCHANGE NOZZLES FROM ONE PRODUCT TO ANOTHER.

## WARRANTY

1 The manufacturer guarantees and warrants (a) that the active ingredient content and the total net weight are as stated within the lawful limits and (b) that the directions, warnings and other statements on this label are based upon responsible experts' evaluation of reasonable tests of effectiveness, of toxicity to laboratory animals and to plants, and of residues on food crops, and upon reports of field experience. Tests have been made on all varieties or in all states. 2 The manufacturer further warrants the material herein is reasonably fit for use under normal conditions as directed hereon. The manufacturer neither makes nor authorizes any agent or representative to make any other warranties of FITNESS OR MERCHANTABILITY, guarantee or representation, express or implied, concerning this material. This product is sold only on the basis that buyer

16

assumes all risks of use or handling which result in loss or damage and which are beyond manufacturer's control. No claim of any kind, and whether or not based on negligence, shall be greater in amount than the purchase price of the material in respect of which such claim is made. In no event shall manufacturer or seller be liable for special, indirect or consequential damages resulting from the use or handling of this material. 3. No modification of this warranty and disclaimer is authorized except by specific reference to them in writing by an employee of the manufacturer.

FORMULATED FOR  
PLATTE CHEMICAL COMPANY, INC.  
150 SO. MAIN STREET FREMONT, NEBRASKA 68025

20842

osrre A

2

**ACTIVE INGREDIENTS:**

Diazinon [O,O-diethyl O-(2-isopropyl-6-methyl-4-pyrimidinyl) phosphorothioate] ..... 25.00%  
Aromatic Petroleum Distillate ..... 55.98%  
**INERT INGREDIENTS:** ..... 19.02%

**TOTAL** ..... 100.00%

4

air and apply artificial respiration if indicated. If on skin, wash promptly with soap and water. Rinse thoroughly. If in eyes, rinse eyes with water and call a physician immediately. **NOTE TO PHYSICIAN:** Solvent presents aspiration hazard if taken internally. Gastric lavage is indicated. Product contains an organophosphate insecticide. If symptoms of cholinesterase inhibition are present, atropine by injection is antidotal. 2-PAM is also antidotal and may be administered, but only in conjunction with atropine.

**ENVIRONMENTAL HAZARDS**

This product is toxic to fish, birds, and other wildlife. Shrimp and crabs may be killed at application rates. Birds feeding on treated areas may be killed. Do not apply directly to water. Do not apply when weather conditions favor drift from treated areas. Do not contaminate water by cleaning of equipment or disposal of wastes. Apply this product only as specified on this label.

6

**STORAGE AND DISPOSAL**

**STORAGE:** Store in original container only, preferably in a locked area. Keep container tightly closed when not in use. Store in a cool, dry place. Do not use food or drink containers for mixing or storage.

**PESTICIDE DISPOSAL:** Securely wrap original container in several layers of newspaper and discard in trash.

**CONTAINER DISPOSAL:** Do not reuse container. Wrap container in several layers of newspaper and put in trash.

Kills many outdoor insects which destroy lawns (Refer to label directions for specific insects controlled.) Contains DIAZINON insecticide which provides positive control of many "hard-to-kill" sucking and chewing insects.

Lawns, cont'd

Webworms), Leafhoppers, Mites (Bermuda, Clover), Sowbugs (Pillbugs), Springtails (Collembola)

Thoroughly wet down grass a few hours before applying.

After applying 8 ounces of this product to 1000 square feet of lawn, remove finger from hole on right side of nozzle. Apply water only, evenly, over treated area for approximately 3 minutes. To continue applications of product to another area of lawn, place finger over hole on right side of nozzle to start siphon.

3

**RECAUTIONARY STATEMENTS**  
**HAZARDS TO HUMANS AND DOMESTIC ANIMALS**

**WARNING**

May be fatal if swallowed, inhaled, or absorbed through skin. Wash thoroughly with soap and water if on skin and after handling and before eating, drinking or using tobacco. Avoid breathing spray mist. Avoid contact with eyes and skin. Wear protective clothing and rubber gloves. Remove contaminated clothing and wash before reuse. Avoid contamination of feed and foodstuffs. Do not use on household pets or humans. Do not permit children or pets to go onto sprayed grass until the spray has completely dried. Do not use in the home. Do not contaminate ornamental fish ponds.

**STATEMENT OF PRACTICAL TREATMENT**

If swallowed, call a physician or Poison Control Center immediately. **DO NOT INDUCE VOMITING.** Vomiting may cause aspiration pneumonia. If inhaled, remove victim to fresh air.

This pesticide is highly toxic to bees exposed to direct treatment or to residues remaining on the treated area. Do not apply when bees are actively visiting the crop, cover crop, or weeds blooming in the treatment area. Applications should be timed to provide the maximum possible interval between treatment and the next period of bee activity.

**PHYSICAL OR CHEMICAL HAZARDS**

Do not, use, pour, spill or store near heat or open flame.

**DIRECTIONS FOR USE**

It is a violation of Federal Law to use this product in a manner inconsistent with its labeling.

**HOW TO MIX AND APPLY**

Step 1: Determine size of spraying job. For lawns, measure area to be sprayed. Make applications when insects first appear. Repeat applications as needed or as noted, below in Directions for Applying.

Step 2: See "How to Use Sprayer," pages 11 through 14.

Step 3: Spray as directed.

Use contents within 5 months after opening.

**DIRECTIONS FOR APPLYING**

Problem Areas	Pests — Rates and Directions
LAWNS	Ants, Armyworms, Bermudagrass Thrips, Brown Dog Ticks*, Chiggers, Crickets, Cutworms, Earwigs, Fleas, Frit Flies, Lawn Billbugs**, Chinch Bugs, Lawn Moths (Sod
Bent, Bermuda, Bluegrass, Dichondra, Fescue, Marion, St. Augustine	

Lawns, cont'd

\*Brown Dog Ticks: Do not apply to animals. particular, spray under shrubbery and the grass next to house.

\*\*Lawn Billbugs: Apply when activity is first observed or when chewed or brown grass is present, indicating damage from the insect. Water the lawn thoroughly, immediately after treatment.

(1 fl. oz. in 3 gals. of water covers 125 sq. ft. 8 fl. oz. in 24 gals. of water covers 1,000 sq. ft.)