

33955-559

3-23-2001

NOTIFICATION  
Form Approved. OMB No. 2070-0060. Approval Expires 02-28-95

Please read instructions on reverse before completing form.



United States  
Environmental Protection Agency  
Washington, DC 20460

- Registration
- Amendment
- Other

OPP Identifier Number

**Application for Pesticide - Section I**

1. Company/Product Number 33955-559	2. EPA Product Manager Joanne I. Miller	3. Proposed Classification <input checked="" type="checkbox"/> None <input type="checkbox"/> Restricted
4. Company/Product (Name) Acme® Ornamec® Herbicide	PM# (PM 23)	
5. Name and Address of Applicant (Include ZIP Code) PBI/Gordon Corporation, Acme Division PO Box 014090 Kansas City, Missouri 64101 <input type="checkbox"/> Check if this is a new address	6. Expedited Review. In accordance with FIFRA Section 3(c)(3) (b)(i), my product is similar or identical in composition and labeling to: EPA Reg. No. _____ Product Name _____	

**Section - II**

<input type="checkbox"/> Amendment - Explain below.	<input checked="" type="checkbox"/> Final printed labels in response to Agency letter dated August 28, 2000	<b>NOTIFICATION</b>  MAR 23 2001
<input type="checkbox"/> Resubmission in response to Agency letter dated _____	<input type="checkbox"/> "Me Too" Application.	
<input checked="" type="checkbox"/> Notification - Explain below.	<input type="checkbox"/> Other - Explain below.	

Explanation: Use additional page(s) if necessary. (For section I and Section II.)

1) **NOTIFICATION OF ADDITIONAL BRAND NAME PER PR NOTICE 98-10:** We are requesting the additional brand name of "Gordon's Grass-No-More™ Over-The-Top Spray."

2) **SUBMISSION OF FINAL PRINTED LABELING IN RESPONSE TO AN AGENCY LETTER DATED AUGUST 28, 2000.** Three (3) copies of the container labeling are enclosed for your review. Please pin-punch one copy and return to us for state registration purposes. A self-addressed, stamped envelope is also enclosed for your convenience.

This notification is consistent with the provisions of PR Notice 98-10 and EPA regulations at 40CFR 152.46, and no other changes have been made to the labeling or the confidential statement of formula of this product. I understand that it is a violation of 18 U.S.C. Sec. 1001 to willfully make any false statement to the EPA. I further understand that if this notification is not consistent with the terms of PR Notice 98-10 and 40CFR 152.46, this product may be in violation of FIFRA and I may be subject to enforcement action and penalties under Section 12 and 14 of FIFRA.

**Section - III**

1. Material This Product Will Be Packaged In:				2. Type of Container	
Child-Resistant Packaging <input type="checkbox"/> Yes* <input type="checkbox"/> No	Unit Packaging <input type="checkbox"/> Yes <input type="checkbox"/> No	Water Soluble Packaging <input type="checkbox"/> Yes <input type="checkbox"/> No		<input type="checkbox"/> Metal	<input type="checkbox"/> Plastic
* Certification must be submitted		If "Yes" Unit Packaging wgt. No. per container	If "Yes" Package wgt. No. per container	<input type="checkbox"/> Glass	<input type="checkbox"/> Paper
				<input type="checkbox"/> Other (Specify) _____	
3. Location of Net Contents Information <input type="checkbox"/> Label <input type="checkbox"/> Container		4. Size(s) Retail Container		5. Location of Label Directions <input type="checkbox"/> On Label <input type="checkbox"/> On Labeling accompanying product	
6. Manner in Which Label is Affixed to Product <input type="checkbox"/> Lithograph <input type="checkbox"/> Paper glued <input type="checkbox"/> Stenciled <input type="checkbox"/> Other _____					

**Section - IV**

1. Contact Point (Complete items directly below for identification of individual to be contacted, if necessary, to process this application)		
Name Craig Martens	Title Manager of Regulatory Services	Telephone No. (Include Area Code) 816/460-6287
2. Signature 		6. Date Application Received (Stamped)
3. Title Manager of Regulatory Services		
4. Typed Name Craig Martens	5. Date February 19, 2001	

2/11

GORDON'S®

# GRASS·NO·MORE™

OVER-THE-TOP SPRAY

*Kills unwanted  
grasses in and around  
ornamental plants.  
Spray ornamentals  
"over-the-top".*

ACTIVE INGREDIENTS	
Fluazifop-P-butyl (Butyl) 2-[4-[[5-(4-chloromethyl)-2-pyridinyl]oxy]phenoxy]propanoate	98.30%
INERT INGREDIENTS	1.70%
TOTAL	100.00%

This product contains 0.125 pound (1/8 isomer (fluazifop-P-butyl) per gallon

6/7/2-2001

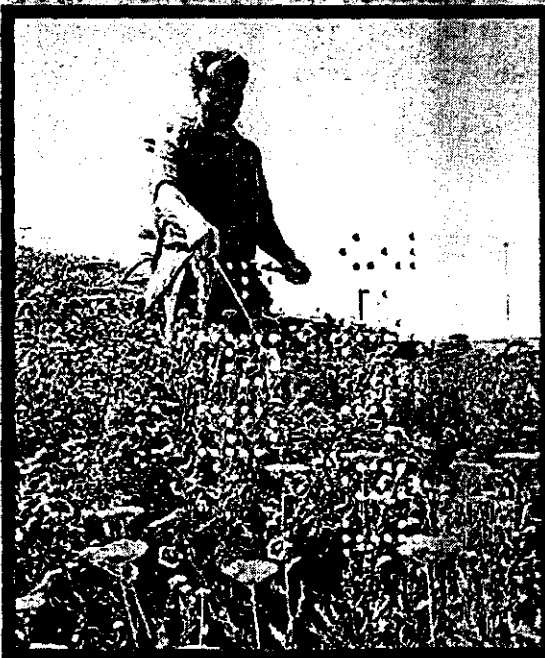
**KEEP OUT OF REACH  
OF CHILDREN  
CAUTION**

NOTIFICATION

6/8/2-2001

See additional Precautionary Statements,  
including First Aid on back panel.

**NET CONTENTS: 16 FL. OZ.  
(One U.S. Pint)**



**STOP! READ THE ENTIRE LABEL FIRST. OBSERVE ALL PRECAUTIONS AND FOLLOW DIRECTIONS CAREFULLY.**

***See Accompanying Booklet for Complete Label***

**PRECAUTIONARY STATEMENTS**

**HAZARDS TO HUMANS AND DOMESTIC ANIMALS:**

**CAUTION:** Harmful if absorbed through skin or inhaled. Causes eye irritation. May cause allergic skin reactions. Avoid contact with skin, eyes or clothing. Avoid breathing vapor or spray mist. Wear protective clothing, PVC gloves and apron and full face shield when handling or mixing concentrate. Remove contaminated clothing and wash before reuse. Wash thoroughly with soap and water after handling.

**FIRST AID**

<b>If In Eyes:</b>	<ul style="list-style-type: none"> <li>• Hold eye open and rinse slowly and gently with water for 15-20 minutes. Remove contact lenses, if present, after the first 5 minutes, then continue rinsing.</li> <li>• Call a poison control center or doctor for treatment advice.</li> </ul>
<b>If On Skin Or Clothing</b>	<ul style="list-style-type: none"> <li>• Take off contaminated clothing.</li> <li>• Rinse skin immediately with plenty of water for 15-20 minutes.</li> <li>• Call a poison control center or doctor for treatment advice.</li> </ul> <p><i>(Continued on next column)</i></p>

**If Inhaled:**

- Move person to fresh air.
- If person is not breathing, call 911 or an ambulance, then give artificial respiration, preferably mouth-to-mouth, if possible.
- Call a poison control center or doctor for further treatment advice.

Have the product container or label with you when calling a poison control center or doctor or going for treatment.

**STORAGE AND DISPOSAL**

**STORAGE:** Keep container closed when not in use. Do not store near food or feed. Store in original container only.

**PESTICIDE DISPOSAL:** Securely wrap original container in several layers of newspaper and discard in trash.

**CONTAINER DISPOSAL:** Do not reuse container (bottle, can, jar). Rinse thoroughly before discarding in trash.

677/2-2001 AP082800  
EPA REG. NO. 33955-559  
EPA EST. NO. 2217-KS-1

*Manufactured By*



*An Employee-Owned Company*  
1217 West 12th Street  
Kansas City, Missouri 64101



4/11

# GORDON'S GRASS-NO-MORE™ OVER-THE-TOP SPRAY

Manufactured By  
**G** pbi/gordon  
corporation  
An Employee-Owned Company  
1217 West 12th Street  
Kansas City, Missouri 64101

67712-2001 AP082900  
EPA REG. NO. 33955-559

**KILLS UNWANTED GRASSES  
IN AND AROUND ORNAMENTAL PLANTS.  
SPRAY ORNAMENTALS "OVER-THE-TOP".**

**SHAKE WELL BEFORE USING**

**ACTIVE INGREDIENT:**  
Fluazifop-P-butyl, Butyl (E)-2-  
[4-[[5-(trifluoromethyl)-2-pyridinyl]  
oxy]phenoxy] propanoate\* . . . . . 1.70%  
**INERT INGREDIENTS:** . . . . . 98.30%  
TOTAL 100.00%

\*This product contains 0.125 pound (+) isomer  
(fluazifop-P-butyl) per gallon.

**KEEP OUT OF REACH  
OF CHILDREN  
CAUTION**

See below for additional  
Precautionary Statements  
including First Aid.



**READ THE ENTIRE LABEL FIRST.  
OBSERVE ALL PRECAUTIONS AND  
FOLLOW DIRECTIONS CAREFULLY.**

### PRECAUTIONARY STATEMENTS

**HAZARDS TO HUMANS AND DOMESTIC ANIMALS:**

**CAUTION:** Harmful if absorbed through skin or inhaled. Causes eye irritation. May cause allergic skin reactions. Avoid contact with skin, eyes or clothing. Avoid breathing vapor or spray mist. Wear protective clothing, PVC gloves and apron and full face shield when handling or mixing concentrate. Remove contaminated clothing and wash before reuse. Wash thoroughly with soap and water after handling.

#### FIRST AID

<b>If In Eyes:</b>	<ul style="list-style-type: none"> <li>Hold eye open and rinse slowly and gently with water for 15-20 minutes. Remove contact lenses, if present, after the first 5 minutes, then continue rinsing.</li> <li>Call a poison control center or doctor for treatment advice.</li> </ul>
<b>If On Skin Or Clothing</b>	<ul style="list-style-type: none"> <li>Take off contaminated clothing.</li> <li>Rinse skin immediately with plenty of water for 15-20 minutes.</li> <li>Call a poison control center or doctor for treatment advice.</li> </ul>
<b>If Inhaled:</b>	<ul style="list-style-type: none"> <li>Move person to fresh air.</li> <li>If person is not breathing, call 911 or an ambulance, then give artificial respiration, preferably mouth-to-mouth, if possible.</li> <li>Call a poison control center or doctor for further treatment advice.</li> </ul>

Have the product container or label with you when calling a poison control center or doctor or going for treatment.

**ENVIRONMENTAL HAZARDS:** This product is toxic to fish. Do not apply directly to water. Do not contaminate water when disposing of equipment washwater. Do not apply when weather conditions favor drift from target area.

**PHYSICAL AND CHEMICAL HAZARDS:** Do not use or store near heat or open flame.

### DIRECTIONS FOR USE

It is a violation of Federal law to use this product in a manner inconsistent with its labeling.

This labeling must be in the possession of the user at the time of application.

**INTENDED FOR OUTDOOR DOMESTIC USE BY HOMEOWNERS ONLY.**

### STORAGE AND DISPOSAL

**STORAGE:** Keep container closed when not in use. Do not store near food or feed. Store in original container only.

**PESTICIDE DISPOSAL:** Securely wrap original container in several layers of newspaper and discard in trash.

**CONTAINER DISPOSAL:** Do not reuse container (bottle, can, jar). Rinse thoroughly before discarding in trash.

### GENERAL INFORMATION

Gordon's Grass-No-More can be used to control grass in many newly transplanted and established plantings of ornamentals, trees, shrubs and groundcovers. Gordon's Grass-No-More does not control broadleaf weeds or sedges.

**Control Symptoms** — Gordon's Grass-No-More is a systemic herbicide which moves from the treated foliage into the shoots, roots, rhizomes, stolons, and growing points of treated grass weeds. Gordon's Grass-No-More provides excellent control of many grasses — roots and all.

Growth of treated grass weeds stops soon after application. Symptoms include loss of vigor, yellowing and/or reddening, and eventual death to the treated grass plant. Symptoms are generally observed within one to three weeks, depending on grass weed species and environmental conditions.

**WHEN TO APPLY**

Apply Gordon's Grass-No-More to actively growing grasses before they exceed the recommended growth stages shown in Table A. Apply the product when the first grass species in a target grass weed population reaches its recommended growth stage for treatment. Do not apply to grasses which have tillered, formed seedheads, or exceeded recommended growth stages.

Do not apply Gordon's Grass-No-More to grasses which are stressed due to moisture, temperature, low soil fertility, mechanical or chemical injury.

Do not apply to ornamentals that may be harvested for food within one year after application.

Table A. Annual and perennial grasses controlled by Gordon's Grass-No-More.

ANNUALS	
GRASS SPECIES — Growth Stage: 2 to 8 inches tall, before tillering and/or heading.	
Barnyardgrass	Ichgrass
Broadleaf signalgrass	Johnsongrass, seedling
Crabgrass, large	Jungle rice
Crabgrass, smooth	Prairie cupgrass
Fall Panicum	Stattercane
Field sandbur	Southern sandbur
Foxtail, giant	Southwestern cupgrass
Foxtail, green	Texas panicum
Foxtail, yellow	Wild proso millet
Goosegrass	Witchgrass
Guineagrass, seedling	Woolly cupgrass
PERENNIALS	
Grass Species	Growth Stage
Bermudagrass	4 to 8 inch runners
Guineagrass	6 to 12 inches tall before seedhead initiation
Quackgrass	6 to 10 inches
Rhizome johnsongrass	8 to 18 inches tall and before boot stage
Torpedograss*	3 to 6 inches tall (1st application)
Wheatgrass muhly	4 to 12 inches tall before seedhead initiation

\*Three applications will be needed.

Gordon's Grass-No-More may be applied over-the-top and around those ornamentals with a tolerance rating of 1. Spray to ensure uniform coverage of target weeds.

Over-the-top sprays may cause significant injury to those ornamentals with a tolerance rating of 2, 3, or 4. Direct the spray to avoid ornamental foliage and spot spray weeds only. Spray to ensure uniform coverage of target weeds.

Tolerance ratings indicate ornamental injury from Gordon's Grass-No-More when sprayed over-the-top of ornamentals and are based on this scale.

Tolerance Rating	Tolerance Description
1	No detectable injury
2	Slight injury may occur
3	Significant injury may occur
4	Severe injury may occur

Use hand held or pump-up sprayers. Mix 10 fluid ounces of product to one gallon of water. Apply spray to cover grass weeds. One gallon of spray will treat 1000 to 1200 square feet of ornamental planting.

**APPLICATION METHODS**



**TABLE 1. BROADLEAF SHRUBS**

Common Name	Variety	Tolerance	Method
African cassia		1	A
Aloe		1	A
Althea, Rose of Sharon		1	A
American Holly		1	A
Amur Privet		1	A
Asiatic Jasmine		1	A

6/11

TABLE 1. BROADLEAF SHRUBS (Cont.)

Common Name	Variety	Tolerance	Method
Australian brush cherry		1	A
Bankia rose		1	A
Barbados aloe		1	A
Billiard spirea		1	A
Bird of paradise		1	A
Border forsythia		1	A
Bottle-brush		1	A
Bougainvillea		1	A
Brittlebush		1	A
Bush cherry		1	A
Bush honeysuckle		1	A
California Privet		1	A
Camelia		1	A
Cane plumbago		1	A
Cape honeysuckle		1	A
Carlostera plant		1	A
Catawba Rhododendron	Less dark purple, Purpureum elegans, White catawba, Roseum elegans, Purple elegans, Roseum asperum, English roseum	1	A
Cats claw, Yellow trumpet		2	B
Chinese hibiscus		1	A
Chinese Lilac		2	B
Cinquefoil		2	B
Claytonia		1	A
Coffee, Arabica coffee		1	A
Common boxwood	Wellert	1	A
Compact cranberrybush viburnum		1	A
Compact hickberry		1	A
Coccoloba		1	A
Cranberry bush	Nanum	1	A
Cranberry coccoloba		1	A
Crape myrtle		1	A
Creeping fig, Climbing fig		1	A
Crispa spirea		1	A
Croceaster		1	A
Firecracker flower			
Croton, Variegated laural		1	A
Desert broom, Chaparral broom Chaparral broom		3	B
Desert fern tree		1	A
Desert willow, narrowleaf pitosporum		1	A
Doublefile viburnum	Tomentosum	1	A
Dwarf burford holly		1	A
Dwarf yaupon/tall yaupon		1	A
Escallonia		1	A
Exotica weeping fig		1	A
False spirea, Astibe		1	A
Fatschedera, Ivy tree, Anala		1	A
Feathery cassia, Wormwood		1	A
Fetterbush		2	B
Firewheel tree, Wheel of fire		1	A
Fly Honeysuckle	Emerald Mound	1	A
Forsythia		1	A
Forsydia holly		1	A
Fragrant sumac		3	B
Gay feather, Blazing Star		1	A
Giant protea, King protea		1	A
Glossy abelia		1	A
Grape Ivy, Treebrite	Ellen Denica	1	A
Heavenly bamboo		2	B
Hitsu azalea	Amoenum, Coral bells	1	A
Hitsu azalea	Hensley's Red, Rhodogal, Hino pink	3	B
Hitsu azalea	Hino Crimson	4	B
Hitsu azalea, Kinkikma azalea	Eureka and Kurume	2	B
Holly Mahonia, Dragon grape		1	A
Hybrid tea rose		1	A
Indian Hawthorn		1	A
Ixora, Jungle geranium		1	A
Jacob's coat, Copperleaf		4	B
Japanese barberry	Crimson pygmy	1	A
Japanese boxwood	Jeponica	1	A
Japanese holly		1	A
Japanese honeysuckle		2	B
Japanese laural	Variegata	1	A
Japanese pitosporum	Variegated	1	A
Japanese privet		2	B
Juzube, goat nut		1	A
Justicia	Firecracker	1	A
King's crown, Plume flower, Flamingo Plant		3	B

Korean azalea	Poukhanense	1	A
Yodogawa azalea		1	A
Korean boxwood	Koreana	1	A
Korean lilac		1	A
Laurel-leaved thornberry		3	B
Lavender cotton, Santolina		1	A
Lavender star plant		2	B
Lilac	Pedin	1	A
Lily-of-the-valley bush, Pieris		1	A
Macranthum azalea	Indica	2	B
Mancranthum azalea	Formosa	3	B
Mentor barberry		1	A
Messene Holly		1	A
Madcan Indigo		1	A
Ming aralia		1	A
Minor plant		1	A
Mock orange	Aurea	1	A
Mojave firethorn, pyracantha		1	A
Mycoporum		1	A
Natal plum	Tuttai	1	A
Ninebark		1	A
Oldest hydrangea		1	A
Octotillo, Vine cactus		1	A
Oleander		2	B
Oleander-leaved protea		1	A
Ornamental blueberry		3	B
Rabbilays blueberry			
Osmanthus, tea olive		1	A
P.J.M. Hybrids of Rhododendron		2	B
Pagoda flower		1	A
Paricle hydrangea		1	A
Phloxia		1	A
Pineapple guava		2	B
Pink weigella		1	A
Potentilla	Gold drop,	1	A
Shubby cinqufoil	Primrose beauty		
Protea		1	A
Purple false aranthemum		1	A
Pyracantha, firethorn	Lodense	1	A
Red justice		3	B
Rhododendron "Gable Hybrid"	Elizabeth Gable, Purple splendor, Rose greely	1	A
Rhododendron	Blauser's pink, Rutherfordiana Constance, White cascade, Prize, Kluis sensation, Sweetheart, Kaempo, Royalty, Hahn red, Red wing, Gumpo white, Salmon Spray, Road runner, Tradition, Glorie, Gumpo pink, Greeting, Pink pearl, Paricel, Tabor, Mother's Day, Snow, Masaok, Red ruffle, Delaware Valley white, Purple Gem, H.H. Hume, Stewartsonian, Hino red, Rosebud, Fashion, Herbert, Gibraltar, Gerard's rose, Boule de neige, President Lincoln	1	A
Rose		1	A
Rubber tree	Decona	1	A
Saltbush, Orach		1	A
Sandakwa viburnum		1	A
Sasanqua camellia		1	A
Scarlet firethorn	Lalendei	1	A
Senna		3	B
Shrimp plant, False hop		3	B
Slender deutzia		1	A
Snowmound spirea		1	A
Spider flower		1	A
Spindle tree	Silver King	1	A
Spiraea or Bridal wreath	Anthony Wasser, Fireball or Gold Flame	1	A
Star Magnolia		1	A
Tailhedge buckthorn		1	A
Texas privet		1	A
Texas sage		1	A
Verhoute spirea		2	B
Variegated firethorn		1	A
Variegated mirror plant		1	A
Viburnum	Judd	1	A
Viburnum/willowwood		1	A
Vicari		1	A
Water willow		1	A
Wax myrtle		1	A
Weeping fig, Laurel		1	A
Weeping forsythia		1	A
Weigella	Newport red	1	A
Willowleaf cotoneaster	Franch	1	A
Winged Spindle Tree	Compacta	4	B
Yedda hawthorn		1	A
Yellow shrimp plant		3	B

8/11

TABLE 2. BROADLEAF TREES

Common Name	Variety	Tolerance	Method
Acacia		3	B
African sumac standard		1	A
American dogwood	Flaviramea	1	A
American sweetgum		1	A
Arizona Ash		1	A
Australia tree fern		4	B
Australian tea tree		1	A
Birch/Fliver		4	B
Bottle tree, Kumsjong		3	B
Bedford pear, Ornamental Pear		1	A
Brazilian peppertree		1	A
California peppertree		1	A
Carob tree		1	A
Caroline cherry, Ornamental cherry		1	A
Carrot wood		3	B
Chilean mesquite		1	A
Corkscrew willow	Tortuosa	1	A
Comelian cherry dogwood		1	A
Desert gum		1	A
Desert Ironwood		1	A
Dwarf Nibark	Nanus, Gold drop	1	A
Ethiopia banana		1	A
Fastidiate, Swamp immortelle		1	A
Fiddlewood		3	B
Flowering almond		1	A
Flowering dogwood		1	A
Giant bird of paradise tree		1	A
Golden bamboo		1	A
Grapefruit		1	A
Green palo verde, Jerusalem thorn		1	A
Gum-Barked coolibah		1	A
Honey locust/ shade master	Inermis	1	A
Jacaranda		1	A
Japanese Maple		1	A
Lemon-scented gum		2	B
Narrow-leaf gimlet, Swamp mallee		1	A
Narrow leaved black peppermint		3	B
New Zealand Christmas tree		1	A
Norway maple		1	A
Oak, live		1	A
Olive tree		1	A
Oregon grapeholly		1	A
Palo verde		3	B
Purple hopsseed bush		1	A
Red box gum, Silver dollar gum		1	A
Red bud		1	A
Red Gum		1	A
Red Maple		2	B
Red twig dogwood		1	A
Russian olive		1	A
Show-string acacia		1	A
Showy crabapple		1	A
Silk oak		1	A
Silver maple		1	A
Sour orange		1	A
Southern magnolia		3	B
Star jasmine		1	A
Strawberry tree		2	B
Sweet acacia		3	B
Temple tree		2	B
Weeping willow		1	A
Willow acacia		1	A
Willow-leaved acacia		1	A
Xylocma		1	A
Yellow bells	Angustata	1	A
Yellow oleander tree		1	A



9/11

TABLE 3. GROUNDCOVERS

Common Name	Variety	Tolerance	Method
Algerian ivy		1	A
Azalea jasmine		1	A
Asparagus fern	Myres and Sprenger	1	A
Bearberry cotoneaster	Coral beauty, Royal beauty	1	A
Bearberry, Kinkinick		1	A
Brown beam		1	A
Bush morningglory		1	A
Capeweed		1	A
Ceanothus		2	B
Chinese juniper	Blue vase	1	A
Chinese juniper	Variegata	2	B
Christmas cheer		1	A
Coromandel		3	B
Creeping Charlie		1	A
Creeping juniper	Blue rug, Wiltonii, Hughes, Youngtown compacta	2	B
Creeping juniper	Plumosa	1	A
Crown Vetch		1	A
English ivy		1	A
Gazania gold rush		1	A
Green lilytoper/ Variegated lilytoper		1	A
Green stone crop, Sedum		1	A
Hahn's ivy	Hahnii	1	A
Ivy geranium		1	A
Japanese pachysandra, Japanese spurge		1	A
Japparden juniper		1	A
Lilytoper		1	A
Moneywort/ Wandering Sally		1	A
Myrtle, Dwarf periwinkle		1	A
Ornamental strawberry		1	A
Pothos, Pothos vine	Marble Queen	3	B
Rockrose		1	A
Rosemary	Prostratus	1	A
Savin juniper	Arcadia, Prostrata, Tamariscifolia, Scandea Variegated, Broadmoor	2	B
Savin juniper	Scandea, Papin, and Buffalo	1	A
Scotch heather		1	A
Sedum		1	A
Shore juniper		1	A
Shore juniper	Blue Pacific	2	B
Snow in summer		1	A
Treasure flower	Leucolaena	2	B
Variegated ajuga, Carpet bugleweed		2	B
Waffle plant/ Metallic plant, Red ivy		-	A
White African Daisy		-	A
White iceplant (trailing)		2	B
White lantana		2	B

TABLE 4. HERBACEOUS PLANTS

Common Name	Variety	Tolerance	Method
Ageratum		1	A
Alysaum		1	A
Annual statice		1	A
Baby rubber plant		3	B
Bellflower		-	A
Bird of paradise		-	A
Blue star creeper		-	A
Bugleweed		2	B
Bush lantana		-	A
Candytuft		-	A
Carolina jessamine, Evening trumpet flower		-	A
Chandler plant		4	B
Chives		1	A
Coleus		1	A
Columbine		2	B
Common yarrow		-	A
Compact burningbush		-	A
Cordyline, Dracaena		3	B
Daylily		-	A
Dracaena		3	B
Dracaena, Corn plant	Massangeana	2	B
Dusty miller		-	A
Euonymus		-	A
Fernleaf yarrow	Coronation gold	-	A
Field Marigold, Pot Marigold		-	A
Fransher evergreen, Silver Queen evergreen, Ribbon evergreen		-	A
Gardenia, dwarf		-	A
Gazania		-	A
Geranium	Cranesbill	-	A
Geranium, Martha Washington geranium		-	A
Giant dumbcane		1	A
Gelklotus	Debbe, Jennie, Mahogany, Stargaze	1	A
Gleditsia	Gallery	2	B
Grayleaf daisy		1	A
Green Carpet, Rupturewort		2	B
Hen and chickens, common houseleek		1	A
Hollyhock		1	A
Iris		1	A
Katfish lily		1	A

10/11

**TABLE 4. HERBACEOUS PLANTS (Cont.)**

Common Name	Variety	Tolerance	Method
Lavender-scallopes		4	B
Leatherleaf fern		1	A
Liriope		1	A
Madagascar periwinkle		4	B
Marigold		1	A
Mexican evening primrose		3	B
Morrow honeysuckle		1	A
Mother-in-laws tongue, Snake plant	Hahné	1	A
Myrtle, Dwarf periwinkle		1	A
Oyster plant, Salsify		2	B
Painted drop-tongue		1	A
Passion flower		1	A
Periwinkle		1	A
Peter Pan fly of the Nile, African fly		1	A
Petunia		1	A
Philodendron		2	B
Pinkweed knotweed		3	B
Purple antena (trailing)		1	A
Purple trailing ice plant		1	A
Radiator		1	A
Red spike ice plant		1	A
Rose ice plant		1	A
Ruellia		2	B
Salvia		1	A
Sandwort		1	A
Sensavientis		1	A
Shasta daisy		1	A
Snapdragon		1	A
Spanish dagger		1	A
Spider plant, Ribbon plant		4	B
Spiderwort	Purple heart	4	B
Strawberry clover		1	A
Swedish Ivy		3	B
Sweet William		1	A
Sword fern		1	A
Threadleaf coreopsis		1	A
TI, Goodluck plant		1	A
Treasure Flower		2	B
Tricolor dracaena		2	B
Umbrella plant, Umbrella palm		3	B
Variegated hosta		1	A
Velvetleaf philodendron	Micans	1	A
Wandering jew, Inch plant		4	B
Weeping dagger		1	A
Winged Spindle Tree	Siebold	1	A
Yucca		1	A
Zinnia		1	A

**TABLE 5. NEEDLED EVERGREENS**

Common Name	Variety	Tolerance	Method
African fan pine		1	A
Altum Lawson cypress		1	A
American Arborvitae, White Cedar	Emerald green, Woodwardii, Tachny, Pyramidalis, Globose, Tachny	1	A
Anglo-jap yew, Dorset Yew	Theyersae, Hickell, and Densiformis	1	A
Austrian pine/Black pine		1	A
Blue Spruce		1	A
Canary Island pine		1	A
Chinese juniper	Sea Green	4	B
Chinese juniper	Armstrong	3	B
Chinese juniper	Hetzl, Tomboe, Gold lip, Nicks compact juniper, Kataleari, Hollywood, Blue Point, Blue vase juniper, Pearson, Gold coast juniper, Sergeantii	1	A
Chinese juniper	Pilzeriana, Nana, Old Gold, Robusta Green, Maney, Spearmint	2	B
Colorado Red Cedar, Rocky Mountain juniper		3	B
Concolor fir		1	A
Creeping juniper	Bar Harbor, Blue Chip, Prince of Wales	4	B
Creeping juniper	Admiral	1	A
Douglas fir		1	A
Dwarf Swiss mountain pine		1	A
Eastern hemlock		1	A
Eastern white pine		1	A
Fraser fir		2	B
Hinok falsecypress		1	A
Italian cypress		1	A
Japanese yew		1	A
Japarden juniper		1	A
Leyland cypress		2	B
Mexican border pine		1	A
Noble fir		1	A
Norfolk Island pine		1	A
Norway spruce		1	A
Oriental Arborvitae	Barkman's	1	A
Red cedar		1	A
Red cedar	Grey owl and Sky Rocket	2	B
Red Cedar, Eastlan Red cedar	Burkii	3	B
Red pine		1	A
Rocky Mountain juniper, Colorado red cedar	Blue Haven	4	B
Rocky Mountain juniper, Colorado red cedar	Wichita blue and Cologreen	1	A
Rocky Mountain juniper, Colorado red cedar	Pamfinder and Welchii	2	B
Savin juniper	Papin and Buffalo	1	A
Sawara cypress	Plumosa	1	A
Scotch pine		1	A
Serbian spruce		1	A
Southern Yew, Japanese Yew	Maki	2	B
Western Yellow Pine or Ponderosa pine		1	A
White Spruce	Dwarf Alberta, Black Hills, Daniels	1	A
Yew pine		1	A

**TABLE 6. PALMS, CACTUS, SUCCULENTS, GRASSES**

Common Name	Variety	Tolerance	Method
Baby Sun Rose	Hearts and flowers	3	B
Barrel cactus		1	A
Canary Island date palm		1	A
Candelabra Cactus, Falsecactus		1	A
Century plant, American Aloe		1	A
Chinese fan palm		1	A
Cholla cactus		1	A
Golden fruited palm, Yellow palm		1	A
Green Fountain grass		2	B
Hedgehog cactus		1	A
Jade plant, Dollar plant		3	B
Mediterranean fan palm		1	A
Mexican fan palm		1	A
Mondo grass		2	B
Pampas grass		4	B
Prickly pear cactus		2	B
Pygmy date palm		1	A
Queen palm		1	A
Red Fountain grass		1	A
Sago palm		1	A
Saguero cactus		1	A
Slipper flower, Redbird flower		3	B
Windmill palm		1	A

**LIMITED WARRANTY AND DISCLAIMER**

The manufacturer warrants only that the chemical composition of this product conforms to the ingredient statement given on the label, and that the product is reasonably suited for the labeled use when applied according to the Directions for Use.

THE MANUFACTURER NEITHER MAKES NOR INTENDS ANY OTHER EXPRESS OR IMPLIED WARRANTIES, INCLUDING ANY WARRANTY OF MERCHANTABILITY OR FITNESS FOR A PARTICULAR PURPOSE, WHICH ARE EXPRESSLY DISCLAIMED. This limited warranty does not extend to the use of the product inconsistent with label instructions, warnings or cautions, or to use of the product under abnormal conditions such as drought, excessive rainfall, tornadoes, hurricanes, etc. These factors are beyond the control of the manufacturer or the seller. Any damages arising from a breach of the manufacturer's warranty shall be limited to direct damages, and shall not include indirect or consequential damages such as loss of profits or values, except as otherwise provided by law.

The terms of this Limited Warranty and Disclaimer cannot be varied by any written or verbal statements or agreements. No employee or agent of the seller is authorized to vary or exceed the terms of this Limited Warranty and Disclaimer in any manner.