

**STOP! READ THE ENTIRE LABEL FIRST
OBSERVE ALL PRECAUTIONS AND FOLLOW
DIRECTIONS CAREFULLY**

PRECAUTIONARY STATEMENTS

Hazards to Humans & Domestic Animals

WARNING: Poisoning may occur as a result of exposure. May be fatal if swallowed. May be absorbed through skin. Do not breathe dust. Do not get into eyes or skin or clothing. Do not contaminate food or feedstuffs. Wash thoroughly after handling. Food utensils such as spoons or measuring cups are not to be used for food purposes after use with any pesticide. Keep children and pets off treated areas until the material is worked into the soil and application site has completely dried.

Statement of Practical Treatment

If Swallowed: Vomiting is to be induced immediately. Administer milk or water freely and induce vomiting by giving one dose (one half ounce) syrup of ipecac. If vomiting does not occur within 10 to 20 seconds administer a second dose. If syrup of ipecac is not available induce vomiting by touching back of throat with a finger. **CALL A PHYSICIAN AT ONCE.** Do not induce vomiting or give anything by mouth to an unconscious person.

If In Eye: Immediately flush eyes with plenty of water for at least 15 minutes. Call a physician at once.

If Inhaled: Remove victim to fresh air and apply respiration if necessary.

If On Skin: Wash promptly with soap and water. Rinse thoroughly.

NOTE TO PHYSICIAN: ANTIDOTE: Atropine sulfate 2 PAM is also antidote and may be administered in conjunction with atropine.

Environment of Hazards: This product is toxic to fish, birds and other wildlife. Exposed granules on ground surface may be hazardous to birds. Do not apply directly to water. Do not contaminate any body of water.

DIRECTIONS FOR USE: It is a violation of federal law to use this product in a manner inconsistent with its labeling.

Storage & Disposal: Do not store near fertilizers, seeds or other pesticides. Do not reuse empty container. Wrap and place in trash collection.

HOW INSECTS ARE KILLED

Acme Systemic Insecticide Granules protect Roses, Chrysanthemums, Azaleas, Pyracantha, Spirea, Birch, and other flowers and shrubs from damage by aphids, spider mites, thrips, leaf miners, whiteflies, lace bugs, leafhoppers and certain other pests.

Acme Systemic Insecticide Granules contain Di-Syston, a chemical that enters the plant through its roots, systemic action, and is then moved to all parts of the plant through natural growth and sap flow. Working from inside the plant, it kills sucking insects that attempt to feed on it.

Apply granules uniformly (see RECOMMENDED APPLICATIONS) to the soil around the base of the plant. Mix the granules into the top soil with water. The chemical is released from the granules, which enter into the root zone and be absorbed into the plant. Granules can also be scattered over planting beds and mixed into the top soil before

planting seed or setting bulbs or transplants. Anticipate application of this product to be made as needed to maintain insect control after the plants start to grow.

RECOMMENDED APPLICATIONS

FLOWERS: Azaleas, Camellias, Callisteges, Chrysanthemum, Delphinium, Petunias and other flowers.

TO CONTROL: Aphids, plant lice, Lace Bug, Leafhoppers, Spider Mites, Thrips, Whiteflies.

AMOUNT TO USE

Before Planting: Apply 8 ounces evenly over 100 sq. ft. (10 X 10 ft.) of bed area and work into the top 2-3 inches of soil. Sow seed or set plants and water thoroughly.

Growing Plants: For individual plants, apply one rounded teaspoonful around base of plant, work into soil and water thoroughly.

For Flowers in a Row: Apply one rounded teaspoonful per foot of row in a narrow band near base of plants. Work into top soil and water thoroughly. Repeat application at 4-6 week intervals if insects reappear.

Potted Plants including Houseplants: Apply one rounded teaspoonful per 6-inch pot. Mix thoroughly in top soil and drench with water.

SHRUBS: Azalea, Birch, Camellia, Eucalyptus, Magnolia, Locust, Pine, Rhododendron, Roses, Yew, and other shrubs.

TO CONTROL: Lace Bug, Aphids, plant lice, Birch leaf miner, Holly leaf miner, Leafhoppers, Mistle webworm, Spider Mites, Pine Tip Moth, Whiteflies.

AMOUNT TO USE: Apply 2 to 4 rounded teaspoonfuls per foot of shrub height. Use the lower rate for shrubs up to 3 ft. and the higher rate for shrubs from 3 to 6 feet in height. Distribute the required amount evenly from the base of the shrub to the drip line on all sides of the plant. Work into the top 1-2 inches of soil and water thoroughly. Repeat application at 4-6 week intervals if required.

TOMATOES

TO CONTROL: Aphids, Flea Beetles, Leafhoppers, Leaf miners, Mites.

AMOUNT TO USE: In the seed furrow: Apply one rounded teaspoonful per foot of row. Place the granules either below or to one side of the seed. Do not allow the seed to come into direct contact with the granules.

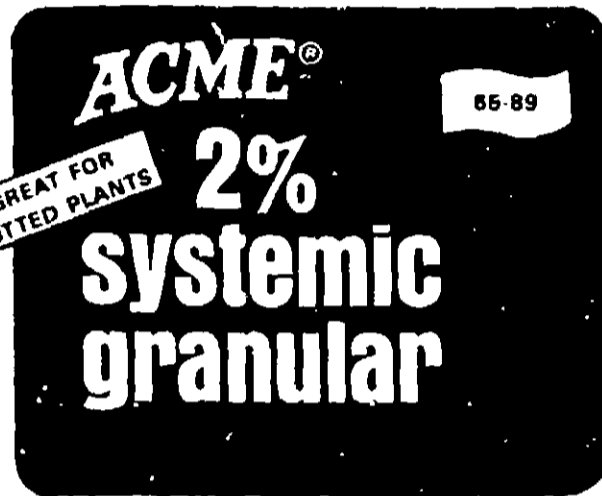
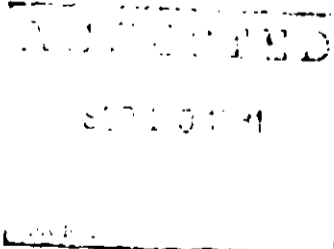
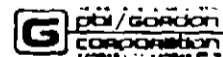
AMOUNT TO USE: In the transplant hole: Apply one rounded teaspoonful per plant in the transplant hole. Mix granules with soil in hole prior to setting plants. **USE ONLY AT PLANTING TIME.**

NOTICE: See all warrants that this product conforms to the ingredient statement on the label. Since conditions of use such as weather, compatibility with other chemicals, and condition of application equipment will vary. Seller makes no claims other than those stated on this label.

EPA REG. NO. 33955-490

EPA EST. NO. 2217-KS-1

© 1989



For the control of Sucking Insects on POTTED PLANTS (including HOUSEPLANTS) ROSES FLOWERS SHRUBS & TOMATOES

Contains "DI-SYSTON"

ACTIVE INGREDIENT
10,0-Diethyl-S-2-methylthio-ethyl phosphorodithioate 2%
INERT INGREDIENTS 98%
TOTAL 100%

**Keep Out of Reach of Children
WARNING**

See side panels for Statement of Practical Treatment and additional precautionary statements.

DI-SYSTON is a registered trademark of CHEMAGRO Division of BAYCHEM CORPORATION

NET WEIGHT 1 1/4 POUNDS

