

**PRECAUTIONARY STATEMENTS HAZARDS TO HUMANS & DOMESTIC ANIMALS**

**CAUTION**

Do not allow children or pets to contact treated surfaces until spray has dried

Do not spray on in rooms or use on plants. Apply as a surface spray only as specified on this label

Do not allow spray to contact food feedstuffs or water supplies. Thoroughly wash dishes and food handling utensils contaminated with this product

Remove pets and cover fish bowls before spraying

**NOTE TO PHYSICIAN:** Contains petroleum distillate. If gastric lavage is deemed necessary, undertake only after proper placement of cuffed endotracheal tube. Active ingredients contain a cholinesterase inhibitor. Treat symptomatically. Atropine is an antidote.

Avoid contact with eyes, skin and clothing. Avoid breathing vapors of spray mist. Keep away from food feedstuffs and domestic water supplies. Do not smoke while using. Wash thoroughly after handling. If swallowed, do not induce vomiting. Call a physician immediately.

**STATEMENT OF PRACTICAL TREATMENT**

**If Swallowed** - Get prompt medical attention

**If Inhaled** - Get fresh air

**In on Skin** - Flush with water

**Wash with warm water and soap**

**In In Eye** - Flush thoroughly with water

**PHYSICAL OR CHEMICAL HAZARDS**  
**FLAMMABLE!** Contents under pressure. Keep away from heat, sparks and open flame. Do not puncture or incinerate container. Exposure to temperatures above 130°F may cause bursting.



**MBI INDUSTRIES INC**  
 7300 W. CARRIAGE DR  
 SANTA ANA, CA 92704  
 (714) 557-8505

# ANT AND ROACH KILLER WITH DURSBAN®

**ACTIVE INGREDIENTS**

Pyrethrin	0.052%
*Piperonyl (butoxide) Technical	0.261%
**Chlorpyrifos 10.0 diethyl 0 (3,5,6-trichloro-2-pyridyl) phosphorothioate	0.500%
Petroleum Turbulate	68.117%
<b>INERT INGREDIENTS</b>	30.451%
	100.000%

\*Equivalent to 0.208% (butylcarbitol) (6-propylpiperonyl) ether and 0.052% related compounds.  
 \*\*U.S. Patent No. 3,244,586  
 ®Dursban Registered trademark of The Dow Chemical Company



**KEEP OUT OF REACH OF CHILDREN**

**CAUTION: HARMFUL IF SWALLOWED. See rear panel for additional precautions.**

Controls cockroaches, ants, silverfish, spiders, crickets, earwigs, brown dog ticks.

EPA REG. NO. 33176-11  
 EPA EST. NO. 33176-CA-1

NET WT. 14.5 OZ. (411 GM.)



**DIRECTIONS FOR USE**

It is a violation of Federal Law to use this product in a manner inconsistent with its labeling

**STORAGE AND DISPOSAL**

**Storage** - Store in a cool dry area away from heat or open flame

**Disposal** - Replace cap and discard in trash. Do not puncture or incinerate container

**To Operate** - Holding the can upright, order directed toward surface to be treated, press actuator button

**To Kill Cockroaches, Spiders, Ants, Crickets, Silverfish and Earwigs** - Spray areas where these pests are found or may hide including dark corners of rooms and closets, cracks and crevices along baseboards and door sills and frames, behind and beneath sinks, stoves, refrigerators and cabinets and around garbage cans, plumbing and other utility installations. Fleets driven out of hiding places should be sprayed directly. Spray ant trails, nests and points of entry.

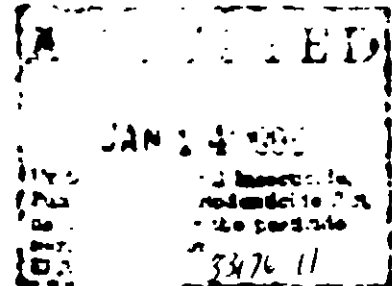
**To Kill Brown Dog Ticks and Fleas** - Apply thoroughly as a spot treatment to infested areas such as pet beds and resting quarters nearby cracks and crevices along and behind baseboards, window and door frames and localized areas of floor and floor covering where these pests may be present. Fresh bedding should be placed in animal quarters following treatment. Do not spray pets with this product.

**To Control Flies, Mosquitoes** - Use only on outdoor surfaces. Spray outside surfaces of windows and door frames and other areas where these pests may enter.

Also spray dark corners and localized resting areas such as under eaves, porches, patios and in garages where these insects may congregate. Flies and mosquitoes coming to rest on treated surfaces will be killed. Repeat treatment when effectiveness diminishes.

Only for Sale to, Use, and Storage by Servicepersons.

**BEST AVAILABLE COPY**



AM12

3376-11

1-11