



U.S. ENVIRONMENTAL PROTECTION AGENCY

Office of Pesticide Programs
Registration Division (7505T)
1200 Pennsylvania Ave., N.W.
Washington, D.C. 20460

EPA Reg. Number:

33025-9

Date of Issuance:

2/20/25

NOTICE OF PESTICIDE:

☒ Registration
☐ Reregistration
(under FIFRA, as amended)

Term of Issuance:

Unconditional

Name of Pesticide Product:

Centrifuge

Name and Address of Registrant (include ZIP Code):

Steve Delgado
Lamplight Farms, Inc.
W140 N4900 Lilly Road
Menomonee Falls, WI 53051

Note: Changes in labeling differing in substance from that accepted in connection with this registration must be submitted to and accepted by the Registration Division prior to use of the label in commerce. In any correspondence on this product always refer to the above EPA registration number.

On the basis of information furnished by the registrant, the above named pesticide is hereby registered under the Federal Insecticide, Fungicide, and Rodenticide Act (FIFRA).

Registration is in no way to be construed as an endorsement or recommendation of this product by the Agency. In order to protect health and the environment, the Administrator, on his motion, may at any time suspend or cancel the registration of a pesticide in accordance with the Act. The acceptance of any name in connection with the registration of a product under this Act is not to be construed as giving the registrant a right to exclusive use of the name or to its use if it has been covered by others.

This product is unconditionally registered in accordance with FIFRA section 3(c)(5) provided that you:

1. Submit and/or cite all data required for registration/reregistration/registration review of your product when the Agency requires all registrants of similar products to submit such data.

Continues page 2

Signature of Approving Official:

Jacquelyn Herrick, Product Manager 3
Invertebrate & Vertebrate Branch 1, Registration Division
(7505T)

Date:

2/20/25

2. Make the following label changes before you release the product for shipment:
 - Revise the EPA Registration Number to read, "EPA Reg. No. 33025-9."
3. Submit one copy of the final printed label for the record before you release the product for shipment.

Should you wish to add/retain a reference to the company's website on your label, then please be aware that the website becomes labeling under FIFRA and is subject to review by the Agency. If the website is false or misleading, the product would be misbranded and unlawful to sell or distribute under FIFRA section 12(a)(1)(E). 40 CFR 156.10(a)(5) lists examples of statements EPA may consider false or misleading. In addition, regardless of whether a website is referenced on your product's label, claims made on the website may not substantially differ from those claims approved through the registration process. Therefore, should the Agency find or if it is brought to our attention that a website contains false or misleading statements or claims substantially differing from the EPA approved registration, the website will be referred to the EPA's Office of Enforcement and Compliance.

If these conditions are not complied with, the registration will be subject to cancellation in accordance with FIFRA section 6. Your release for shipment of the product constitutes acceptance of these conditions. A stamped copy of the label is enclosed for your records.

The record for this product currently contains the following CSF(s):

- Basic CSF dated 10/19/2023

If you have any questions, please contact Elizabeth Andrews at 202-566-2467 or at Andrews.Elizabeth@epa.gov.

Enclosure

Centrifuge

Sub-label A: Page 2
Sub-label B: Page 6
Sub-label C: Page 8
PACKAGE INSERT: Page 10

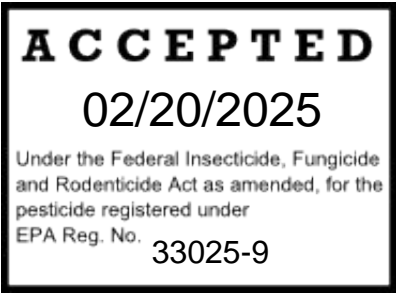
Alternate Brand Names

TIKI™ Brand BiteFighter™ LED Mosquito Repellent Lantern
TIKI™ Brand LED Mosquito Repellent Lantern
TIKI™ Brand BiteFighter™ LED Mosquito Repellent Torch
TIKI™ BiteFighter™ Rechargeable Mosquito Repellent Lantern
TIKI™ Brand BiteFighter™ Mosquito Repellent Lantern

TIKI™ Brand BiteFighter™ Rechargeable Mosquito Repeller
TIKI™ Brand BiteFighter™ Mosquito Repellent Lantern
TIKI™ BiteFighter™ Rechargeable Mosquito Repeller
TIKI™ Brand BiteFighter™ Mosquito Repeller

TIKI® Brand BiteFighter® Mosquito Repellent Pod
TIKI® Brand BiteFighter® Mosquito Repellent Refill
TIKI® Brand BiteFighter® Mosquito Repellent Pod Refill

ACTIVE INGREDIENT:
Metofluthrin 4.0%
OTHER INGREDIENTS*: 96.0%
TOTAL 100.0%
*Contains petroleum distillate



KEEP OUT OF REACH OF CHILDREN
CAUTION

For Outdoor Use Only

Net Contents:

©20XX Lamplight Farms Incorporated
W140 N4900 Lilly Rd., Menomonee Falls, WI 53051

EPA Reg. No.: 33025-X
EPA Est. No.:

Centrifuge

Sub-label A: Kit with Device & Repellent Pods

[] indicates optional wording.
{ } indicates notes to reviewer.

{Additional alternate bullets at end of label}

TIKI™ Brand BiteFighter™ Rechargeable Mosquito Repeller
TIKI™ Brand BiteFighter™ Mosquito Repellent Lantern
BiteFighter™ Rechargeable Mosquito Repeller
TIKI™ Brand BiteFighter™ Mosquito Repeller

ACTIVE INGREDIENT:

Metofluthrin 4.0%

OTHER INGREDIENTS*: 96.0%

TOTAL 100.0%

*Contains petroleum distillate

KEEP OUT OF REACH OF CHILDREN CAUTION

See [side [back] panel] [inside [outside] packaging] insert for additional precautions.

{Note to reviewer: Referral statements are for multiple packaging configurations depending on the supplemental distributor which may not have first aid and precautionary on front panel.}

For Outdoor Use Only

Net Contents:
EPA Reg. No: 33025-X
EPA Est. No:

[PRECAUCION AL CONSUMIDOR: Si usted no lee inglés, no utilice este producto hasta que la etiqueta le haya sido explicada ampliamente.
TO THE USER: If you cannot read English, do not use this product until the label has been fully explained to you.]

PRECAUTIONARY STATEMENTS

HAZARDS TO HUMANS AND DOMESTIC ANIMALS

CAUTION: Harmful if swallowed. Wash hands thoroughly with soap and water after handling and before eating, drinking, chewing gum, using tobacco or using the toilet.

ENVIRONMENTAL HAZARDS

Do not apply directly to water, or to areas where surface water is present or to intertidal areas below the mean high-water mark. Do not contaminate water when disposing of equipment washwater or rinsate.

FIRST AID:

IF SWALLOWED: Immediately call a poison control center or doctor. Do not induce vomiting unless told to do so by a poison control center or doctor. Do not give **any** liquid to the person. Do not give anything by mouth to an unconscious person. Have the product container or label with you when calling a poison control center or doctor or going for treatment.

In case of Medical emergencies or health and safety inquiries or in case of fire, leaking or damaged containers, information may be obtained by calling 1-888-740-8712.

Note to Physician: Contains petroleum distillate – vomiting may cause aspiration pneumonia.

{Option for product sold with fixtures}

Contains: 1 Fixture(s) [Device(s)] [Unit(s)] and [1x 0.18 fl. oz. (5.4 mL)] [1x 0.36 fl. oz. (10.8 mL)] 1x [0.54 fl. oz. (16.2 mL)] [1x 0.73 fl. oz. (21.6 mL)] [1x 0.91 fl. oz. (27 mL)] [1x 1.09 fl. oz. (32.4 mL)] [PRODUCT NAME] [bottle name] [Repellent Pod Refill] [Repellent Bottle(s)] [Repellent Pod(s)] [Repellent Refill(s)]

{Bottle name to be completed by supplemental distributor at time of supplemental distribution agreement}}

{Bottle only}

Contain(s): [1x 0.18 fl. oz. (5.4 mL)] [1x 0.36 fl. oz. (10.8 mL)] 1x [0.54 fl. oz. (16.2 mL)] [1x 0.73 fl. oz. (21.6 mL)] [1x 0.91 fl. oz. (27 mL)] [1x 1.09 fl. oz. (32.4 mL)] [PRODUCT NAME] [bottle name] [Repellent Pod Refill] [Repellent Bottle(s)] [Repellent Pod(s)] [Repellent Refill(s)]

[Lot Number]

DIRECTIONS FOR USE

It is a violation of Federal Law to use this product inconsistent with its labeling.

For use outdoors on patios, decks, unenclosed porches, walkways, around swimming pools and other areas where mosquito protection is desired. Do not use indoors.

Place [install] one fixture [PRODUCT NAME] [Device] [Unit] [Lantern] every 12 ft. around [throughout] the area you wish to protect [from biting mosquitoes] and 3 feet off the ground.

[Each Fixture [Device] [Unit] [Lantern] provides up to 110 square feet of mosquito protection.]

The Vaporizer [Liquid] [Repellent] [Emanator] works [operates] independently from [with or without] the Light [Light Fixture] [Lamp] [LED] feature. The Vaporizer [Liquid] [Repellent] [Emanator] should be turned off when not in use.

The Vaporizer [Liquid] [Repellent] [Emanator] will get hot while in use. Always allow Vaporizer [Liquid] [Repellent] [Emanator] to cool before replacing with [PRODUCT NAME] [bottle name] [Repellent Pod Refill] [Repellent Bottle] [Repellent Pod] [Repellent Refill]. After 6 weeks of use, Open [Fixture] [device] [unit] [Lantern] [Remove] [fixture][device] [unit] cover and visually inspect [PRODUCT NAME] [[bottle]]

The claimed hours of repellency are an average based on lab testing and presume using 90% of repellent provided. The last 10% of repellent is not claimed, as repellency effectiveness may diminish with reduced wick exposure. Your repellent usage rate will vary based on the temperature and relative humidity.

Replace when [PRODUCT NAME] [bottle name] [Repellent Bottle] [Repellent Pod Refill] [Repellent Pod] [Repellent Refill] is empty.

Replace [PRODUCT NAME] [bottle name] [Repellent Bottle] [Repellent Pod Refill] [Repellent Pod] [Repellent Refill] when power to device is [turned] off.

Active in 30 minutes of use. Provides protection in 30 minutes.

Screw in repellent pod to the top part of the unit. **Do not** attempt to refill the repellent pod.

USE RESTRICTIONS

Do not alter or modify in any manner. Do not immerse in water. Do not insert anything other than approved refill in the fixture. Do not attempt to refill the repellent refill. Do not use indoors. Do not use this product under the influence of drugs or alcohol. Do not let fluid come in contact with any surface. Do not pry repellent refill open. Do not refill mosquito repellent pod refill.

STORAGE AND DISPOSAL

Do not contaminate water, food, or feed by storage and disposal of repellent unit.

PESTICIDE STORAGE: Store in a cool, dry place. Keep container tightly closed. Store refills out of direct sunlight.

PESTICIDE DISPOSAL AND CONTAINER HANDLING: Non-refillable [liquid vaporizer] [bottle] [container]. Do not reuse or refill this [liquid vaporizer] [bottle] [container]. **If empty:** Place in trash or offer for recycling if available. **If partly filled:** Use remaining product according to label directions for use or call your local solid waste agency for disposal instruction. Never place unused product down any indoor or outdoor drain.

IMPORTANT: READ BEFORE USE

Read the entire Directions for Use, Conditions, Disclaimer of Warranties and Limitations of Liability before using this product. If terms are not acceptable, return the product container at once.

By using this product, user or buyer accepts the following conditions, disclaimer of warranties and limitations of liability.

CONDITIONS: The directions for use of this product are believed to be adequate and must be followed carefully. However, it is impossible to eliminate all risks associated with the use of this product. Ineffectiveness or other unintended consequences may result because of such factors as weather conditions, presence of other materials, or the manner of use or application, all of which are beyond the control of Lamplight. All such risks shall be assumed by the user or buyer.

DISCLAIMER OF WARRANTIES: TO THE EXTENT CONSISTENT WITH APPLICABLE LAW, LAMPLIGHT MAKES NO OTHER WARRANTIES, EXPRESS OR IMPLIED, OF MERCHANTABILITY OR OF FITNESS FOR A PARTICULAR PURPOSE OR OTHERWISE, THAT EXTEND BEYOND THE STATEMENTS MADE ON THIS LABEL. No agent of Lamplight is authorized to make any warranties beyond those contained herein or to modify the warranties contained herein. To the extent consistent with applicable law, Lamplight disclaims any liability whatsoever for special, incidental or consequential damages resulting from the use or handling of this product.

LIMITATIONS OF LIABILITY: TO THE EXTENT CONSISTENT WITH APPLICABLE LAW, THE EXCLUSIVE REMEDY OF THE USER OR BUYER FOR ANY AND ALL LOSSES, INJURIES OR DAMAGES RESULTING FROM THE USE OR HANDLING OF THIS PRODUCT, WHETHER IN CONTRACT, WARRANTY, TORT, NEGLIGENCE, STRICT LIABILITY OR OTHERWISE, SHALL NOT EXCEED THE PURCHASE PRICE PAID, OR AT MGK'S ELECTION, THE REPLACEMENT OF PRODUCT.

{or alternate text}

Note [Notice]: Seller warrants that this product complies with the specifications expressed in this label. To the extent consistent with applicable law,

seller makes no other warranties, and disclaims all other warranties, express or implied, including but not limited to warranties of merchantability and fitness for the intended purpose. To the extent consistent with applicable law, seller's liability or default, breach or failure under this label shall be limited to the amount of the purchase price. To the extent consistent with applicable law, seller shall have no liability for consequential damages.

{or alternate text}

Notice: To the extent consistent with applicable law, buyer assumes all responsibility for safety and use not in accordance with directions.

[Fixture] [Device] [Unit] [Lantern] made in [country of origin]

{Individual Small Bottle Label}

[PRODUCT NAME] [bottle name] [Repellent Pod Refill] [Repellent Bottle] [Repellent Pod] [Repellent refill]

ACTIVE INGREDIENT:

Metofluthrin 4.0%

OTHER INGREDIENTS*: 96.0%

TOTAL 100.0%

*Contains petroleum distillate

**KEEP OUT OF REACH OF CHILDREN
CAUTION**

**See [outside] [PRODUCT NAME] [bottle name] [Repellent Pod Refill] [Repellent Bottle] [Repellent Pod] [Repellent Refill] packaging [carton]
[insert] for precautions and directions for use**

{Note to reviewer: Specific location will depend on packaging configuration of various supplemental distributors}

Net Contents: Contains: [1x 0.18 fl. oz. (5.4 mL)] [1x 0.36 fl. oz. (10.8 mL)] 1x [0.54 fl. oz. (16.2 mL)] [1x 0.73 fl. oz. (21.6 mL)] [1x 0.91 fl. oz. (27 mL)] [1x 1.09 fl. oz. (32.4 mL)] [Repellent Bottle(s)] [Repellent Pod(s)] [Repellent Pod Refill(s)]

For Outdoor Use Only.

EPA Reg. No. 33025-X

EPA Est. No.

CENTRIFUGE

Sub-label B – Kit with LED Device & Repellent Pods

Alternate Brand Names

TIKI™ Brand BiteFighter™ LED Mosquito Repellent Lantern
TIKI™ Brand LED Mosquito Repellent Lantern
TIKI™ Brand BiteFighter™ LED Mosquito Repellent Torch
BiteFighter™ Rechargeable Mosquito Repellent Lantern
TIKI™ Brand BiteFighter™ Mosquito Repellent Lantern

ACTIVE INGREDIENT:

Metofluthrin 4.0%

*OTHER INGREDIENTS: 96.0%

TOTAL 100.0%

*Contains petroleum distillate

KEEP OUT OF REACH OF CHILDREN CAUTION

[See [insert] [use manual] for [directions] [for use], [precautionary] [language], [first aid] [statements], [and] [storage and disposal]]

For Outdoor Use Only.

[] indicates optional wording
{ } indicates notes to reviewer

[PRECAUCION AL CONSUMIDOR: Si usted no lee inglés, no utilice este producto hasta que la etiqueta le haya sido explicada ampliamente.
TO THE USER: If you cannot read English, do not use this product until the label has been fully explained to you.]

PRECAUTIONARY STATEMENTS

HAZARDS TO HUMANS AND DOMESTIC ANIMALS

CAUTION: Harmful if swallowed. Wash hands thoroughly with soap and water after handling and before eating, drinking, chewing gum, using tobacco or using the toilet.

ENVIRONMENTAL HAZARDS

Do not apply directly to water, or to areas where surface water is present or to intertidal areas below the mean high-water mark. Do not contaminate water when disposing of equipment wash water or rinsate.

FIRST AID:

IF SWALLOWED: Immediately call a poison control center or doctor. Do not induce vomiting unless told to do so by a poison control center or doctor. Do not give **any** liquid to the person. Do not give anything by mouth to an unconscious person. Have the product container or label with you when calling a poison control center or doctor or going for treatment.

In case of Medical emergencies or health and safety inquiries or in case of fire, leaking or damaged containers, information may be obtained by calling 1-888-740-8712.

Note to Physician: Contains petroleum distillate – vomiting may cause aspiration pneumonia.

[For use outdoors [on patios, decks, unenclosed porches, walkways, around swimming pools and other areas] where mosquito protection is desired.]

[The claimed hours of repellency are an average based on lab testing and presume using 90% of repellent provided. The last 10% of repellent is not claimed, as repellency effectiveness may diminish with reduced wick exposure. Your repellent usage rate will vary based on the temperature and relative humidity.]

DIRECTIONS FOR USE:

It is a violation of Federal Law to use this product inconsistent with its labeling.

USE RESTRICTIONS

Do not alter or modify in any manner. Do not immerse in water. Do not insert anything other than approved refill in the fixture. Do not attempt to refill the repellent refill. Do not use indoors. Do not use this product under the influence of drugs or alcohol. Do not let fluid come in contact with any surface. Do not pry repellent refill open. Do not refill mosquito repellent pod refill.

{Directions that will appear on kit outer box label. Kit will include LED Device & Repellent Pods}

For use outdoors where mosquito protection is desired. For best results, place [Torches] [Tabletops] [Devices] [Units][Lanterns] [no farther than] 6 ft. from location of desired protection and let the mosquito repellent run for 30 minutes to establish protection and 3 feet off the ground. Add additional [Torches] [Tabletops] [Devices] [Units][Lanterns] 12 ft. apart to create a larger zone of protection. Refer to the Instruction and Use Manual for complete instructions. Retain for reference.

{Directions that will appear on box label for REPELLENT PODS included in Kit box}

(1) Turn [PRODUCT NAME] off. (2) Twist top of [insert] to remove. (3) Unscrew the Pod cap to expose the wick. (4) Insert Pod into top of [insert] and turn the Pod [counterclockwise] until fully inserted and secure. (5) Replace top of [insert] and twist to lock. Refer to the Instruction and Use Manual for complete instructions. Let the mosquito repellent run for 30 minutes to establish protection.

[Regularly check and replace empty pods/refill]

[One repellent pod refill provides a protection zone of 110 sq. ft.]

STORAGE AND DISPOSAL

Do not contaminate water, food, or feed by storage and disposal of repellent unit.

PESTICIDE STORAGE: Store in a cool, dry place. Keep container tightly closed. Store refills out of direct sunlight.

PESTICIDE DISPOSAL AND CONTAINER HANDLING: Non-refillable [liquid vaporizer] [bottle(s)] [pod] [pod refill] [container]. Do not reuse or refill [liquid vaporizer] [bottle(s)] [pod] [container]. **If empty:** Place in trash or offer for recycling if available. **If partly filled:** Use remaining product according to label directions for use or call your local solid waste agency for disposal instruction. Never place unused product down any indoor or outdoor drain.

[FCC STATEMENT: This device complies with Part 15 of the FCC Rules. Operation is subject to the following two conditions: (1) this device may not cause harmful interference, and (2) this device must accept any interference received, including interference that may cause undesired operation.]

{For California}



WARNING This product can expose you to chemicals including lead, which is known to the State of California to cause cancer. For more information go to www.P65Warnings.ca.gov.]

Centrifuge

Sub-label C: Replacement Repellent Pods

Alternate Brand Names

TIKI® Brand BiteFighter® Mosquito Repellent Pod
TIKI® Brand BiteFighter® Mosquito Repellent Refill
TIKI® Brand BiteFighter® Mosquito Repellent Pod Refill

ACTIVE INGREDIENT:

Metofluthrin 4.0%

OTHER INGREDIENTS*: 96.0%

TOTAL 100.0%

*Contains petroleum distillate

KEEP OUT OF REACH OF CHILDREN CAUTION

[See [insert] [use manual] for [directions] [for use], [precautionary] [language], [first aid] [statements], [and] [storage and disposal]]

For Outdoor Use Only.

Net Contents: ____

EPA Reg. No. 33025-X

EPA Est. No. ____

[] indicates optional wording.

{ } indicates notes to reviewer.

[PRECAUCION AL CONSUMIDOR: Si usted no lee inglés, no utilice este producto hasta que la etiqueta le haya sido explicada ampliamente.

TO THE USER: If you cannot read English, do not use this product until the label has been fully explained to you.]

PRECAUTIONARY STATEMENTS

HAZARDS TO HUMANS AND DOMESTIC ANIMALS

CAUTION: Harmful if swallowed. Wash hands thoroughly with soap and water after handling and before eating, drinking, chewing gum, using tobacco or using the toilet.

ENVIRONMENTAL HAZARDS

Do not apply directly to water, or to areas where surface water is present or to intertidal areas below the mean high-water mark. Do not contaminate water when disposing of equipment washwater or rinsate.

FIRST AID:

IF SWALLOWED: Immediately call a poison control center or doctor. Do not induce vomiting unless told to do so by a poison control center or doctor. Do not give **any** liquid to the person. Do not give anything by mouth to an unconscious person. Have the product container or label with you when calling a poison control center or doctor, or going for treatment.

In case of Medical emergencies or health and safety inquiries or in case of fire, leaking or damaged containers, information may be obtained by calling 1-888-740-8712.

Note to Physician: Contains petroleum distillate – vomiting may cause aspiration pneumonia.

[The claimed hours of repellency are an average based on lab testing and presume using 90% of repellent provided. The last 10% of repellent is not claimed, as repellency effectiveness may diminish with reduced wick exposure. Your repellent usage rate will vary based on the temperature and relative humidity.]

DIRECTIONS FOR USE:

It is a violation of Federal Law to use this product inconsistent with its labeling.

For use outdoors [on patios, decks, unenclosed porches, walkways, around swimming pools and other areas] where mosquito protection is desired.


{Directions will appear on box label for REPELLENT POD REFILL To be used only in [PRODUCT NAME]}

(1) Turn [PRODUCT NAME] off. (2) Twist top of [insert] to remove. (3) Unscrew the Pod cap to expose the wick. (4) Insert Pod into top of [insert] and turn the Pod [counterclockwise] until fully inserted and secure. (5) Replace top of [insert] and twist to lock. Refer to the Instruction and Use Manual for complete instructions. Let the mosquito repellent run for 30 minutes to establish protection.

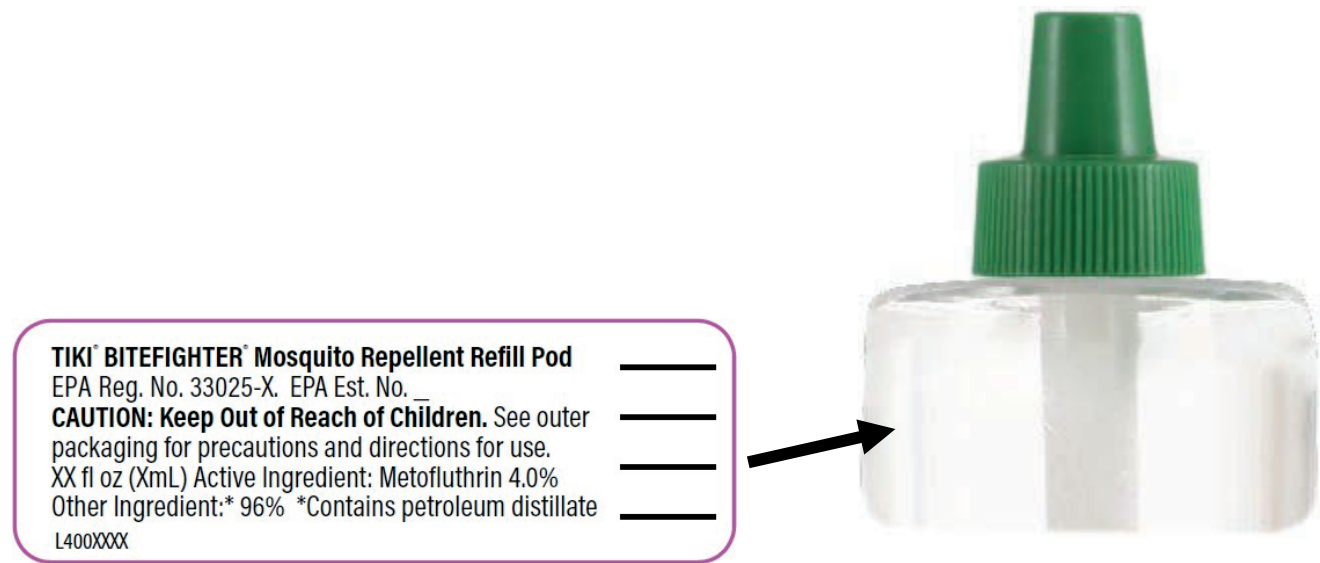
USE RESTRICTIONS
Do not alter or modify in any manner. Do not immerse in water. Do not insert anything other than approved refill in the fixture. Do not attempt to refill the repellent refill. Do not use indoors. Do not use this product under the influence of drugs or alcohol. Do not let fluid come in contact with any surface. Do not pry repellent refill open. Do not refill mosquito repellent pod refill.

STORAGE AND DISPOSAL
Do not contaminate water, food, or feed by storage and disposal of repellent unit [lantern].
PESTICIDE STORAGE: Store in a cool, dry place. Keep container tightly closed. Store refills out of direct sunlight.
PESTICIDE DISPOSAL AND CONTAINER HANDLING: Non-refillable [liquid vaporizer] [bottle(s)] [pod refill] [pod] [container]. Do not reuse or refill [liquid vaporizer] [bottle(s)] [pod refill] [pod] [container]. If empty: Place in trash or offer for recycling if available. If partly filled: Use remaining product according to label directions for use or call your local solid waste agency for disposal instruction. Never place unused product down any indoor or outdoor drain.

[For California]

 **WARNING:** This product can expose you to chemicals including lead, which is known to the State of California to cause cancer. For more information go to www.P65Warnings.ca.gov.

{Individual Small Bottle Label - bottle will contain actual EPA establishment and registration numbers}



{Blanks on the right of the label will be populated with hours depending on the fill.}

Hours	Fl oz fill (mL)
12	0.18 (5.4 mL)
24	0.36 (10.8 mL)
36	0.54 (16.2 mL)
48	0.73 (21.6 mL)
60	0.91 (27 mL)
72	1.09 (32.4 mL)



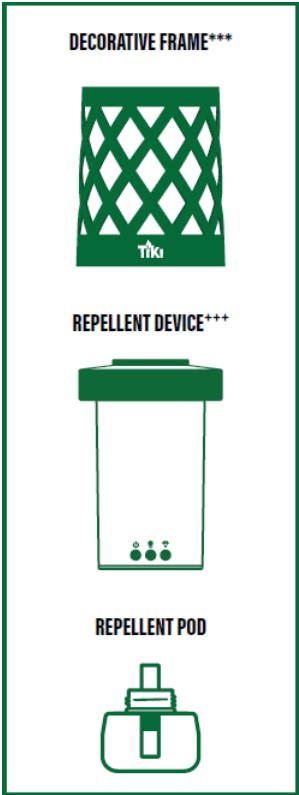
USER GUIDE

{Select language from the box label and manual will also be included in a User Guide}

©[YEAR] LAMPLIGHT FARMS INCORPORATED, TIKI and BiteFighter are trademarks of Lamplight Farms Incorporated

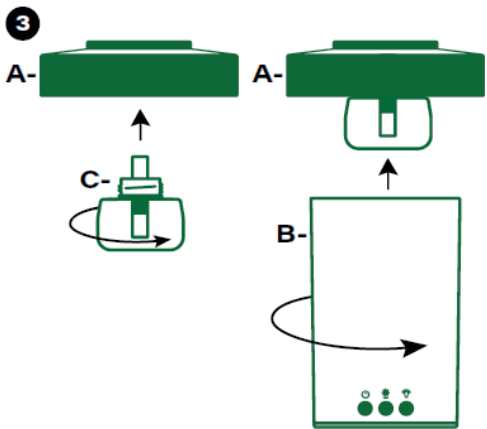
W140 N4900 Lilly Rd., Menomonee Falls, WI 53051 • www.tikibrand.com

Using your [PRODUCT NAME]



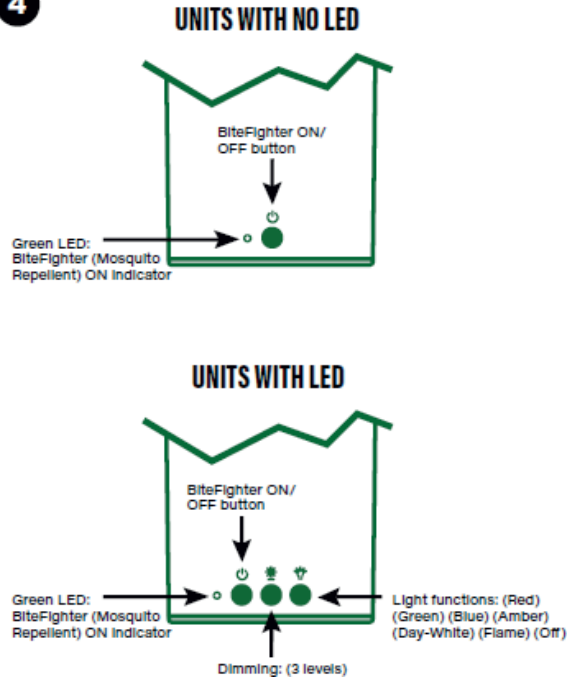
{*** Product design may differ from image +++ May come with LED lights}

- CHARGING YOUR BATTERY
 - Prior to first use, fully charge the battery. It can take up to 6.5 hours to reach a full charge*.
 - To charge, find the USB-C charging port on the bottom of the repellent device. Insert the provided charging cable (wall adapter not included).
 - The battery LED indicator on the repellent device will blink green during charging.
 - The LED indicator will turn solid green and off when charging is complete.
 - *6.5 hours or less is based on using 5V2A power adapter with supplied or fast charging rated USB C charging cord. The result may vary from different power adapter manufacturer.
- PREPARING YOUR LOCATION
 - The repellent device will protect a 12 foot area so place it in the center of the area you intend to protect.
 - Do not cover the repellent device while in use .
 - Multiple units can be spaced 12 feet apart for a larger zone of protection.
- INSERTING THE REPELLENT POD REFILL



- Gently twist the upper section of the repellent device (A) counterclockwise away from the lower section (B).
- Unscrew the cap from the repellent refill (C). Insert the repellent refill (C) into the threaded area in the upper section (A).
- Gently twist the upper section (A) and lower section (B) together in a clockwise motion until it clicks in place .
- **TURNING ON YOUR REPELLENT DEVICE AND LED LIGHTING OPTION**

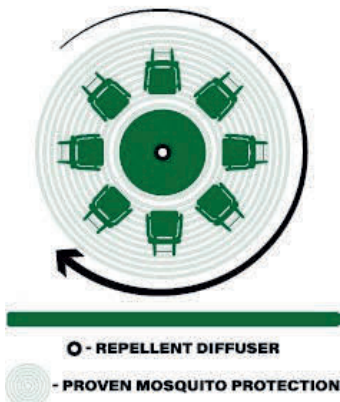
4



- To turn on the repellent press the left button once. You will see a green light near the button indicating the repellent is on. Allow the mosquito repellent run for 30 minutes to establish protection.
- If there are three buttons on your [PRODUCT NAME]. The left button activates the repellent (on/off). The center button controls dimming levels. The right button toggles the lighting effects. (3 settings).
- There are six modes for the LED lights: Red, Green, Blue, Amber, Day-White, TIKI Flame mode, and off. Press the right button until you see your favorite lighting effect.
- The LED illumination mode can be used independently from the repellent mode.
- **FINAL STEPS**
 - Place repellent device into the decorative frame.
 - Battery will last up to 5 [8] [7.5] [7] [6.5] [6] [5.5] [4.5] [4] [3.5] hours when using LED and repellent .

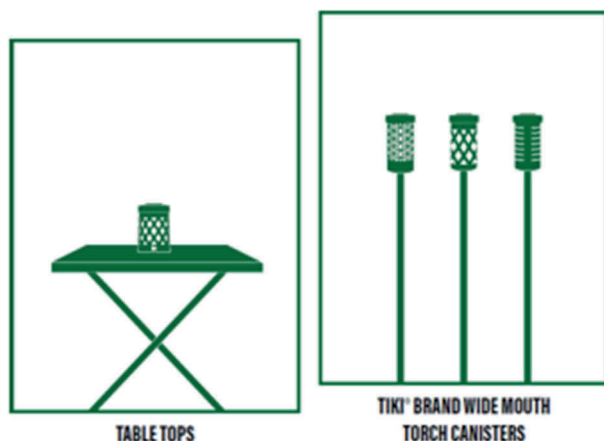
Troubleshooting Tips and Tricks

110 SQ FT OF PROTECTION



- **TIKI™ BRAND REPELLENT POD REFILL**
 - For best results, let the mosquito repellent run for 30 minutes to establish protection.
 - Regularly check and replace empty repellent refill.
- **USE AND CARE INSTRUCTIONS**
 - Do not expose the device to rain or submerge in water.
 - Do not expose the device to temperatures above 140° F.
 - Hand clean with a damp paper towel or rag only.
 - Store in a cool dry place when not in use.

MODULAR AND PORTABLE



- **NOTICE**
 - Do not use PRODUCT NAME] until you have read the operating instructions and user warnings.
 - For adult use only. This is not a toy and is not intended for use by children. Keep out of reach of children and pets.
 - Always use in accordance with all applicable local, state and national codes.
 - Risk of fire. Keep lanterns away from any combustible surface. Do not clean this product with a water spray or the like.
 - Place 3 feet above ground for efficacy
- **PRECAUCION AL CONSUMIDOR:**
 - Si usted no lee inglés, no utilice este producto hasta que la etiqueta le haya sido explicada ampliamente.
 - TO THE USER: If you cannot read English, do not use this product until the label has been fully explained to you.
 - This device complies with Part 15 of the FCC Rules. Operation is subject to the following two conditions: (1) this device may not cause harmful interference, and (2) this device must accept any interference received, including interference that may cause undesired operation.
- **PRECAUTIONARY STATEMENTS**
 - **HAZARDS TO HUMANS AND DOMESTIC ANIMALS**
 - **CAUTION:** Harmful if swallowed. Wash hands thoroughly with soap and water after handling and before eating, drinking, chewing gum, using tobacco or using the toilet.
 - **ENVIRONMENTAL HAZARDS:** Do not apply directly to water, or to areas where surface water is present or to intertidal areas below the mean high water mark. Do not contaminate water when disposing of equipment washwater or rinsate.
- **FIRST AID**
 - **IF SWALLOWED:**
 - Immediately call a poison control center or doctor.
 - Do not induce vomiting unless told to do so by a poison control center or doctor.
 - Do not give any liquid to the person.
 - Do not give anything by mouth to an unconscious person.
 - **HOTLINE NUMBER**
 - Have the product container or label with you when calling a poison control center or doctor, or going for treatment.
 - In case of Medical emergencies or health and safety inquiries or in case of fire, leaking or damaged containers, information may be obtained by calling 1-888-740-8712.
 - For immediate safety and medical advice 24 hours a day and seven days a week, please contact ProPharma at 1-800-308-7141.
 - **NOTE TO PHYSICIAN**
 - Contains petroleum distillate – vomiting may cause aspiration pneumonia.

DIRECTIONS FOR USE

It is a violation of Federal Law to use this product in a manner inconsistent with its labeling.

IMPORTANT: READ BEFORE USE

Read the entire Directions for Use and Instruction Manual (including Conditions, Disclaimer of Warranties and Limitations of Liability) before using this product. If terms are not acceptable, return the product container at once. By using this product, user or buyer accepts the following conditions, disclaimer of warranties and limitations of liability.

STORAGE AND DISPOSAL

Do not contaminate water, food, or feed by storage and disposal of repellent unit.

PESTICIDE STORAGE:

Store in a cool, dry place.

Keep container tightly closed. Store refills out of direct sunlight.

PESTICIDE DISPOSAL AND CONTAINER HANDLING:

Non-refillable bottles. Do not reuse or refill these bottles. If empty: Place in trash or offer for recycling if available. If partly filled: Use remaining product according to label directions for use or call your local solid waste agency for disposal instruction. Never place unused product down any indoor or outdoor drain.

USE RESTRICTIONS

Do not alter or modify in any manner. Do not immerse in water. Do not insert anything other than approved refill in the fixture. Do not attempt to refill the repellent refill. Do not use indoors. Do not use this product under the influence of drugs or alcohol. Do not let fluid come in contact with any surface. Do not pry repellent refill open. Do not refill mosquito repellent pod refill.

Warranty

[TIKI BRAND LIMITED WARRANTY TERMS AND CONDITIONS]

[APPLICABILITY]

[PRODUCT NAME] are warranted against defects in materials and workmanship for a period of one (1) year from the date of purchase when used under normal conditions for its intended purpose in a residential backyard setting.

Visit www.tikibrand.com/our-guarantee for more information.]

[ELIGIBILITY]

This limited warranty extends to the original purchaser of [PRODUCT NAME] who are located in the continental United States (Hawaii, Alaska and U.S. territories are excluded). The "original purchaser," for the purposes of this warranty, is the first purchaser from www.tikibrand.com or an authorized retailer, or in the case of a gift, to the initial gift recipient of the first purchaser. This limited warranty is non-transferable.

To start a warranty claim, please call 1-888-473-1088 or <https://support.tikibrand.com/help/contactform>. Please have your proof of purchase along with a photo of the potential warranty issue before beginning [your claim]. We reserve the right to perform testing to determine if your product is subject to this warranty and/or to refuse warranty service to any person who, in our sole discretion, abuses the [PRODUCT NAME] or warranty policy. If Lamplight Farms Incorporated determines that the [PRODUCT NAME] is subject to this warranty, we will, in our sole discretion: (i) replace the [PRODUCT NAME] with the same model product or parts, (ii) replace the [PRODUCT NAME] with a comparable product should the [PRODUCT NAME] be discontinued or otherwise unavailable, or (iii) provide you with a refund of the purchase amount. The replacement of the [PRODUCT NAME] or any part of the [PRODUCT NAME] under warranty will not extend the period of warranty. If you obtain a replaced or repaired product, the warranty term of the replaced or repaired [PRODUCT NAME] begins from the date of purchase of the original [PRODUCT NAME]

[EXCLUSIONS]

This limited warranty does not cover:

Purchases from retailers that are not authorized retailers of [PRODUCT NAME]

Damages caused by improper assembly or handling, misuse and/or abuse.

Damages caused by lack of storage away from the elements.

Failure to comply with use instructions.

Non-residential use of [PRODUCT NAME], such as commercial use.

Damage caused by acts of God or other natural forces.

Use of parts and accessories other than those designed specifically for the [PRODUCT NAME].

Repairs or alterations carried out by unauthorized parties or agents

Painting or otherwise altering the materials used to produce the product.

Normal wear and tear or cosmetic damage.]

LIMITATION OF WARRANTY

TO THE MAXIMUM EXTENT PERMISSIBLE BY APPLICABLE LAW, THERE ARE NO EXPRESS WARRANTIES OTHER THAN PROVIDED HEREIN. LAMPLIGHT FARMS INCORPORATED DISCLAIMS ALL STATUTORY AND IMPLIED WARRANTIES, INCLUDING WITHOUT LIMITATION, WARRANTIES OF MERCHANTABILITY AND FITNESS FOR A PARTICULAR PURPOSE TO THE EXTENT PERMITTED BY LAW. IN SO FAR AS SUCH WARRANTIES CANNOT BE DISCLAIMED, ANY IMPLIED WARRANTIES, INCLUDING ANY IMPLIED WARRANTY OF MERCHANTABILITY AND FITNESS FOR A PARTICULAR PURPOSE, WILL BE LIMITED IN DURATION TO THE WARRANTY PERIOD SET FORTH ABOVE. SOME STATES DO NOT ALLOW LIMITATIONS ON HOW LONG AN IMPLIED WARRANTY LASTS, SO THE ABOVE LIMITATION MAY NOT APPLY TO YOU. SOME STATES OR OTHER JURISDICTIONS DO NOT ALLOW THE EXCLUSION OF IMPLIED WARRANTIES, SO THE ABOVE EXCLUSIONS MAY NOT APPLY TO YOU. YOU MAY ALSO HAVE OTHER RIGHTS THAT VARY FROM STATE TO STATE AND JURISDICTION TO JURISDICTION.

TO THE MAXIMUM EXTENT PERMITTED BY APPLICABLE LAW AND EXCEPT AS SET FORTH IN THIS LIMITED WARRANTY, IN NO EVENT WILL LAMPLIGHT FARMS INCORPORATED OR ITS SUPPLIERS BE LIABLE FOR PROCUREMENT OF SUBSTITUTE PRODUCTS, LOSS OF USE, OR OTHER SPECIAL, INCIDENTAL, CONSEQUENTIAL OR INDIRECT DAMAGES ARISING OUT OF OR RELATED TO THE [PRODUCT NAME] OR USE BY YOU OR ANY THIRD PARTY, WHETHER UNDER THEORY OF CONTRACT, TORT (INCLUDING NEGLIGENCE), INDEMNITY, PRODUCT LIABILITY OR OTHERWISE. THIS LIMITATION WILL APPLY EVEN IF LAMPLIGHT FARMS INCORPORATED HAS BEEN ADVISED OF SUCH DAMAGES AND NOTWITHSTANDING THE FAILURE OF ESSENTIAL PURPOSE OF ANY LIMITED REMEDY. IN LIEU OF ANY OTHER REMEDY FOR ANY AND ALL LOSSES AND DAMAGES RESULTING FROM ANY CAUSE, LAMPLIGHT FARMS INCORPORATED MAY, AT ITS SOLE AND EXCLUSIVE OPTION AND IN ITS DISCRETION, REPAIR OR REPLACE YOUR PRODUCT, OR REFUND ITS PURCHASE PRICE. LAMPLIGHT FARMS INCORPORATED'S TOTAL LIABILITY WILL NOT EXCEED THE PURCHASE PRICE PAID FOR THE [PRODUCT NAME] GIVING RISE TO SUCH LIABILITY. SOME STATES DO NOT ALLOW THE EXCLUSION OR LIMITATION OF INCIDENTAL OR CONSEQUENTIAL DAMAGES, SO THE ABOVE LIMITATIONS AND EXCLUSIONS MAY NOT APPLY TO YOU.]

[No employee or agent of Lamplight Farms Incorporated may modify this limited warranty.]

[This limited warranty will be governed by the laws of the State of Wisconsin.]

[1-Year [Limited] Warranty [Visit www.tikibrand.com/customer-service/our-guarantee for more information]

[Lamplight Farms Incorporated will not be held responsible for damage or injury caused by use for any purpose other than specified.]

[SHIPPING INFORMATION]

Shipping charges are not refundable unless the item was shipped to you in error. Contact Customer Service at 1-888-473-1088 or Contact Us at www.tikibrand.com for instructions on how to return a package shipped to you in error.]

[IMPORTANT: READ BEFORE USE]

Read the entire Directions for Use and Instruction Manual (including Conditions, Disclaimer of Warranties and Limitations of Liability) before using this product. If terms are not acceptable, return the product container at once. [By using this product, user or buyer accepts the following Conditions, Disclaimer of Warranties and Limitations of Liability].]

{OPTIONAL MARKETING CLAIMS: Note to Reviewer: Claims can appear on any label}

{PESTICIDAL CLAIMS}

- Saying goodbye to mosquitoes is as easy as turning on a light**
- Simple setup. Proven protection[†]
- [No sprays], [No Lotions, No Mess] – just proven mosquito repellency[†]
- With Proven Mosquito Repellency**[†]
 - **When used with [PRODUCT NAME]
 - [†]Based on studies that demonstrated a reduction in mosquitoes compared to untreated controls. Use as directed. Efficacy may be affected by weather conditions, configuration and distance from repellent pods, and individual physical factors such as manmade and natural structures.
- Portable, no flame, mosquito repellency
- Zone Mosquito Repellent
- Creates a zone of protection
- Repellent diffuser produces invisible, odorless, repellent to keep away biting mosquitoes
- Ambiance on. Mosquitoes gone
- Ambiance [warm glow], Without the Mosquitoes
- Remember the moments not the mosquitoes
- Invite friends, Repel Mosquitoes
- Invite Ambiance [warm glow], Repel Mosquitoes
- Keeps mosquitoes away
- Repels mosquitoes [Attracts guests]
- Fight back against mosquitoes with the proven[†] mosquito repellency [of [PRODUCT NAME]]
- Introducing [PRODUCT NAME] with [proven[†]] mosquito repellency
- Simple set-up, proven[†] protection
- [Lasts] [Up to] [12] [24] [36] [48] [60] [72] hours [of] mosquito protection
- [Repels] [protects against] [biting] mosquitoes, including those that may transmit [Chikungunya], [West Nile Virus], [St. Louis encephalitis] and [dengue].
- Repels [biting] mosquitoes
- Repels mosquitoes, including the *Aedes* mosquito that may transmit Zika virus.
- Repels mosquitoes that may transmit Zika virus.
- Each [Product Name] [Torch] [Tabletop] [Device] [Lantern] [Unit] provides effective mosquito protection [for your entire deck, porch or patio] in a 110 sq. ft. area
- Each [Product Name] [Torch] [Tabletop] [Device] [Lantern] [Unit] contains a Vaporizer [Liquid] [Repellent] [Emanator] [that] releases an odorless, invisible repellent [that] [and] protects up to 110 square feet (sq. ft.) (SF)
- Protects [up to] a 110 sq. ft. area
- Protects [provides] a 12-ft. diameter [area] [of repellency]
- Protects [provides] a 12 ft. [zone] [area] of repellency
- 110 sq. ft. (square feet) [area] [zone] of protection [from biting mosquitoes] from each [Product Name] [Lantern] [Torch] [Tabletop] [Device] [Unit] [Lantern]
- [Product Name] [Torch] [Tabletop] [Device] [Lantern] [Unit] produces an invisible area [zone] of protection which repels [biting] mosquitoes
- [Product Name] [Torch] [Tabletop] [Device] [Lantern] [Unit] produces invisible [odorless] vapor to repel [that repels] [biting] mosquitoes
- Vaporizer [Liquid] [Repellent] [Emanator] produces an invisible area [zone] of protection which repels [biting] mosquitoes
- Vaporizer [Liquid] [Repellent] [Emanator] produces invisible [odorless] vapor to repel [that repels] [biting] mosquitoes
- [Lighting] [Light] [Light Fixture] [Lamp] [LED] [Lantern] may be used independent of the [mosquito repellent] [repellent] [system] [Liquid] [Repellent] [Emanator] [mosquito protection].
- Ready, Set, Protect from mosquitoes
- Protect your [backyard] [yard] [patio] against mosquitoes.
- [Up to] 110 sq ft repellent zone
- Up to 110 sq ft of mosquito repellent protection
- Effective against mosquitoes [that may transmit] [Chikungunya] [West Nile Virus], [St. Louis encephalitis] and [dengue].

[PACKAGING CLAIMS]

- Silent, Invisible, Odorless, and leaves no sticky residue
- Includes [trial sized] repellent [Refill] [Pod]
- [On/Off button] [repellency works when you want it] – [day or night] after 30 minutes
- Powered by rechargeable lithium-ion battery– no butane, candles or open flames required
- Convert an existing TIKI [torch] [tabletop] to an LED TIKI [torch] [tabletop] with [PRODUCT NAME]
- [PRODUCT NAME] can be used to convert an existing TIKI [torch] [tabletop] to an [LED] mosquito repellent [torch] [tabletop]
- Try-Me[!]
- [Trial sized] Repellent Pods Included
- Kit Contents
- [1] [2] TIKI BiteFighter [LED] [Torch] [Tabletop] [PRODUCT NAME] [Device] [Unit] [Lantern]
- [1] [2] [3] [4] [trial sized] [12 hour] [24 hour] [36 hour] [48 hour] [60 hour] [72 hour] repellent [pod] [pod]
- Box Contents – Repellent Pods
- [Trial sized] Mosquito Repellent [Pod] [Pod Refill] [Refill Replacement]
- [Lasts] Up to [12] [24] [36] [48] [60] [72] hours [of mosquito repellency]
- [1] [2] [3] [4] Pack
- READ [BACK] [ALL] PANEL(S) CAREFULLY
- NET CONTENTS [3] [1] [2] [4] X [0.18 fl. oz. (5.4 mL)] [0.36 fl. oz. (10.8 mL)] [0.54 fl. oz. (16.2 mL)] [0.73 fl. oz. 21.6 mL)] [0.91 fl. oz. (27 mL)] [1.09 fl. oz. 32.4 mL)]
- [trial sized] repellent [pods] [pod] [refill]
- Contains [Includes] 1 [2] [3] [4] [5] [6] [7] [8] [PRODUCT NAME] [Repellent [Bottle [Pod] [Refill]]] [PRODUCT NAME]].
- [PRODUCT NAME] [Repellent [Bottle [Pod] [Refill]]] [for [PRODUCT NAME]]
- Available [in] single pack [multi pack] [2 pack] [3 pack] [4 pack] [6 pack] [8 pack]
- [Included] [Each] 10.8 mL (0.36 fl. oz.) of [PRODUCT NAME] [Repellent [Bottle [Pod] [Refill]]] provide(s) 24 [total] hours of mosquito protection
- [Included] [Each] 16.2 mL (0.54 fl. oz.) of [PRODUCT NAME] [Repellent [Bottle [Pod] [Refill]]] provides 36 [total] hours of mosquito protection
- [Included] [Each] 21.6 mL (0.73 fl. oz.) of [PRODUCT NAME] Repellent [Bottle [Pod] [Refill]] provide(s) 48 [total] hours of mosquito protection
- [Included] [Each] 27 mL (0.91 fl. oz.) of [PRODUCT NAME] [Repellent [Bottle [Pod] [Refill]]] provide(s) 60 [total] hours of mosquito protection
- [Included] [Each] 32.4 mL (1.09 fl. oz.) of [PRODUCT NAME] [Repellent [Bottle [Pod] [Refill]]] provide(s) 72 [total] hours of mosquito protection
- Replace [PRODUCT NAME] [Repellent [Bottle [Pod] [Refill]]] for each [Torch] [Tabletop] [Device] [Unit] after [12] [24] [36] [48] [60] [72] hours of use
- [PRODUCT NAME]] with Mosquito Protection Technology
- [Patent Pending Mosquito Protection Technology [System]
- Powered by rechargeable lithium-ion battery
- Free [trial sized] [PRODUCT NAME] [bottle name] [Repellent Bottle] [Repellent Pod Refill] [Repellent Pod] [Repellent Refill] included
- Up to [5] [6] [7] [8] [9] [7.5] [6.5] [5.5] [4.5] [4] [3.5] hours [of] [charge] when using LED and repellent
- Up to [5] [6] [7] [8] [9] [7.5] [6.5] [5.5] [4.5] [4] [3.5] hours [of] battery life when using LED and repellent
- Up to [5] [6] [7] [8] [9] [7.5] [6.5] [5.5] [4.5] [4] [3.5] hours [of] battery life [charge]
- Rechargeable battery
- Multiple light functions
- RGB/LED flame
- Red, Green, Blue colors {color options subject to change}
- Light dimming
- Portable and modular
- [Additional] [12] [24] [36] [48] [60] [72] -hour repellent pods sold separately

{FORMULA CLAIMS}

- Scent-Free
- Odorless
- Unscented
- Repellent is odorless, [silent] [and invisible area of protection]
- Non-Staining
- Up to 12-hour scent free repellent pod included
- Mess Free
- No Mess, no sprays, no creams

{GENERAL CLAIMS}

- Scan [QR code] for [more information] [assembly instructions] [inspiration] [user guide] [how to use] [where to buy]
- Scan Me
- TIKI & BITEFIGHTER are trademarks of Lamplight Farms Incorporated
- Customer Service: 1-888-473-1088
- Please contact 1-888-473-1088 for further assistance.
- Questions, problems, missing parts? Call Customer Service 1-888-473-1088
- For More [information] [inspiration], go to [www.tikibrand.com]
- Para ver advertencias e instrucciones completes, visit [www.tikibrand.com]
- For Information on patents go to [www.tikibrand.com/patents]
- Country of Origin [Made in] [COUNTRY]

- Patent Pending
- Relaxing Ambiance [glow], Without the Mosquitoes
- Surround yourself with ambiance [a warm glow], not mosquitoes
- You'll love the ambiance [warm glow], the mosquitoes won't
- Your outdoor escape, now without mosquitoes
- Perfect for use in backyards
- Keeps away unwanted guests [that buzz and bite]
- Reclaim your backyard [outdoor space]
- Do not let mosquitoes share your yard this year
- Invite the neighbors, uninvite the mosquitoes
- Inviting guests also requires uninviting mosquitoes
- It's time to take back your yard
- Take back your backyard
- Stop sharing your yard with mosquitoes
- Avoid mosquitoes, not the backyard
- Mosquitoes, this is your eviction notice
- Share an evening with friends. Not Mosquitoes
- Take a holiday from mosquitoes.
- Keep away hungry mosquitoes [with [TIKI Brand] BiteFighter [LED] [Torch] [Tabletop] [PRODUCT NAME]]
- Turn on ambiance, turn off mosquitoes
- Give mosquitoes the day off. Keep them away [this weekend] [HOLIDAY] with [PRODUCT NAME]
- Keep hungry mosquitoes away with [PRODUCT NAME]
- Repellent you don't apply to [spray on] clothes [or skin].
- [LED] [Torches] [Tabletops] [Devices] that protect your outdoor patio, [unenclosed porch], [walkway] [or deck] area from [biting] mosquitoes
- Use three [3] [Torches] [Tabletops] [Lanterns] [Devices] [Units] spaced 12 ft. apart on a typical [average] sized deck, patio or outdoor area [for] [provides] 330 square feet [sq. ft.] of coverage
- Use four [4] [Torches] [Tabletops] [Lanterns] [Device] [Unit] spaced 12 ft. apart on a typical [average] sized deck, patio or outdoor area [for] [provides] 440 square feet [sq. ft.] of coverage
- Use five [5] [Torches] [Tabletops] [Lanterns] [Device] [Unit] spaced 12 ft. apart on a large [typical] [average] sized deck, patio or outdoor area [for] [provides] 550 square feet [sq. ft.] of coverage
- Use six [6] [Torches] [Tabletops] [Lanterns] [Device] [Unit] spaced 12 ft. apart on a large [typical] [average] sized deck, patio or outdoor area [for] [provides] 660 square feet [sq. ft.] of coverage
- Easy to install
- No open flame
- No candles
- No butane [required]
- No external fuel required
- It's as easy as turning on the lights to say goodbye to [biting] mosquitoes and the old hassles of keeping them away
- Use on patios, [unenclosed porches,] [decks,] [walkways,] [yards] and other outdoor areas where mosquito protection is desired [required] [needed].
- Vaporizer [Liquid] [Repellent] [Emanator] can operate [be used] independently of lights [with or without] [having] lights on
- Buy one get one free
- Coupon [\$] Rebate(s) available [inside]
- [PRODUCT NAME] [Repellent [Pod] [Refill] [Replacement] works with [in] [product name]
- [PRODUCT NAME] [Repellent [Pod] [Refill] [Replacement]
- Specially designed for use with [in] [PRODUCT NAME]
- For protection and added comfort outdoors
- Works [when you want it] [day [and] [or] night]
- [Helps you] enjoy your evening activities with fewer [less] annoying [biting] mosquitoes.
- Simply turn [switch] off the Vaporizer [Liquid] [Repellent] [Emanator] when protection is not needed.
- Won't harm plants, [flowers], [shrubs] or [and] [grass] [lawns]
- Illuminated [INSERT NAME OF COLOR] LED indicator [light] on fixture [device] indicates [signals] that Vaporizer [Liquid] [Repellent] [Emanator] [Lantern] is operating]
- Convenient protection from [biting] mosquitoes
- Repel mosquitoes at the push of a button after 30 minutes
- 3 year [1 year] [2 year] [4 year] [5 year] [limited] warranty
- Replaceable [repellent] pod(s) [refill(s)]
- [For use outdoors [on patios, decks, unenclosed porches, walkways, around swimming pools and other areas] where mosquito protection is desired.]
- Take along with you on your next camping adventure
- Take along with you on your next road trip
- Take with you on the go

- For the backyard and more!
- Mosquito protection on the go
- Combine a flickering LED flame with proven mosquito repellent
- Portable mosquito repellent and lighting
- Portable mosquito repellent
- Mosquito repellent where you need it the most
- Comes with 1 trial sized repellent pod
- Can use [PRODUCT NAME] as a tabletop
- Use mosquito protection
- All-in-one convenience [mosquito repellent solution]
- [Additional] [12] [24] [36] [48] [60] [72] -hour repellent pods sold separately
- Invisible mosquito protection
- Easy To Use
- Convenient

{Optional Warnings}

- Risk of fire and personal injury.
- !CAUTION READ [BACK][ALL] PANEL[S] CAREFULLY

{GRAPHICS}

{Note to Reviewer: Graphics on the final printed label may incorporate changes in color, position, orientation or size.}

{Electrical graphics}



{Battery graphics}

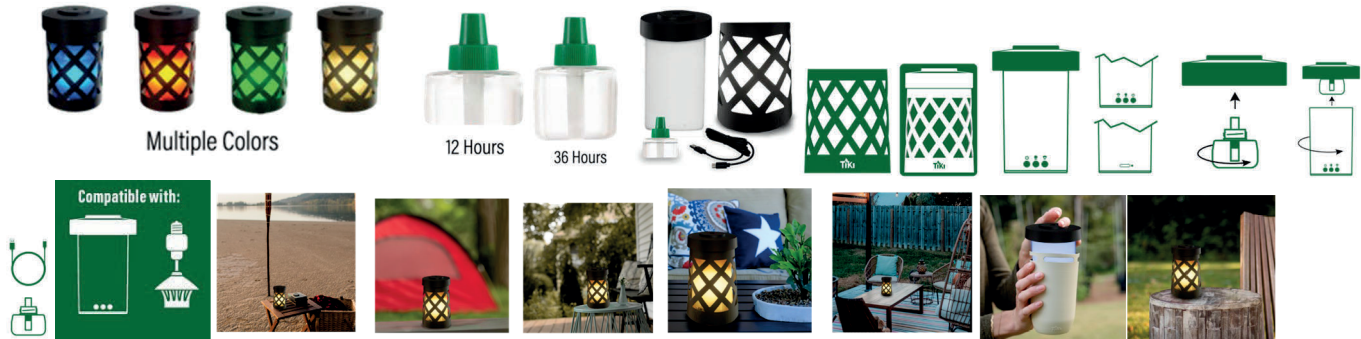


{Individual Small Bottle Label - bottle will contain actual EPA establishment and registration numbers}

{Repellent graphics}



{Packaging graphics}



{General graphics}

