

DIRECTIONS

For maximum effectiveness, a combination of spot surface treatment and fogging is recommended.

SURFACE SPRAYING: To control exposed or accessible stages of roaches, ants, silverfish, spiders, crickets, clover mites, cheese mites, granary weevils, rice weevils, confused flour beetles, rust red flour beetles, saw-toothed grain beetles, spider beetles, cigarette beetles, Drugstore beetles, meal worms, grain mites, and cadolles: Use a good sprayer adjusted to deliver a coarse wet spray. Direct the spray into hiding places, cracks and crevices, under pallets, around containers of stored foods, around the base of machinery, behind shelves and drawers. For silverfish, spray bookcases. For ants, spray trails, nests and points of entry. If surface application only is to be used, spray floors, walls, and other surfaces applying at a rate of 1 gallon to 750 square feet of surface.

To control carpet beetles: Spray edges of carpeting and under carpeting and rugs. Make localized application to floor and baseboards. Spray directly into cracks, closets, and infested areas of shelving. Repeat treatment as needed.

To control bedbugs: Spray mattresses lightly, particularly around tufts and seams. Take beds apart and spray in all joints. Treat baseboards, mouldings, and floors. Repeat treatment as needed.

To control fleas and brown dog ticks: Thoroughly spray infested areas, pet beds, resting quarters, nearby cracks and crevices, along and behind baseboards, mouldings, window and door frames, and all areas of floor and floor covering. Fresh bedding should be placed in animal quarters following treatment. Con-current treatment of animals with an approved insecticide is recommended. Repeat treatment as needed.

SPACE SPRAYING: Close doors and windows and shut off ventilating systems. Apply with a good machine adjusted to deliver a fine mist or fog. For rapid control of flies, fruit flies, gnats, mosquitoes, skipper flies, wasps, hornets, Angoumois grain moths, Mediterranean flour moths, Indian meal moths, and tobacco moths: direct spray at an upward angle, distributing it uniformly throughout the entire area, at a rate of one gallon to 200,000 cubic feet of space.

To kill exposed or accessible stages of the above named flying insects, use a rate of one gallon to 80,000 cubic feet of space. Contact insects directly whenever possible.

BARN, MILK ROOMS, DAIRY PLANTS: To control flies, mosquitoes, and gnats, apply as a fog or fine mist, directing spray toward the ceiling and upper corners, until the area is filled with mist, using about 2 ounces per 1000 cubic feet of space. For best results, close windows and doors before spraying and keep closed for ten to fifteen minutes. Vacate the area and ventilate before reoccupying. Repeat application as necessary.

ON ANIMALS: To protect horses, cattle and hogs from horn flies, house flies, mosquitoes, and gnats, apply a light mist sufficient to wet the tips of the hair. To control stable flies, horse flies, deer flies, apply 2 ounces per adult animal, sufficient to wet the hair but not to soak the hide. Repeat treatment once or twice daily or at intervals necessary to give continued protection.

OUTDOOR MOSQUITO CONTROL: To control adult mosquitoes, apply as a fog or fine mist using good mechanical, thermal or compressed air equipment. For best results, treat when wind velocity does not exceed 5 miles per hour. Application in the evening or early morning is recommended. Treat area thoroughly with particular attention to low and marshy places, shore lines, stagnant pools or ponds and shrubbery or vegetation where mosquitoes may rest. Apply at a rate of 1.2 gallons per acre (or 3.6 fluid ounces per 1000 square feet).

NET CONTENTS _____

PYRENONE® NO. 3

Insecticide

Industrial, Mill, Livestock and Mosquito Spray

For Rapid Control of Flying and Crawling Insects Named On This Label

Use in Food Processing Plants, Canneries, Packing Houses, Mills, Elevators, Granaries, Warehouses, Box Cars, Ships' Holds, Breweries, Bottling Plants, Bakeries, Stores, Markets, Theaters, Hospitals, Schools, Hotels, Motels, Restaurants, Dairies, Barns and Milk Rooms.

Kills and Repels Flies, Mosquitoes and Gnats on Cattle, Horses and Hogs.

The Insecticidal Components (Piperonyl Butoxide and Pyrethrins) are classified as food additives and When This Product is Used as Directed, Allowable Tolerance Levels Will Not Be Exceeded.

ACTIVE INGREDIENTS

	100%
Pyrethrins	0.13%
*Piperonyl Butoxide, Technical	1.27%
Petroleum Distillate	98.60%

*Equivalent to 1.02% (butylcarbityl) (6-propylpiperonyl) ether and to 0.25% of related compounds.

CAUTION

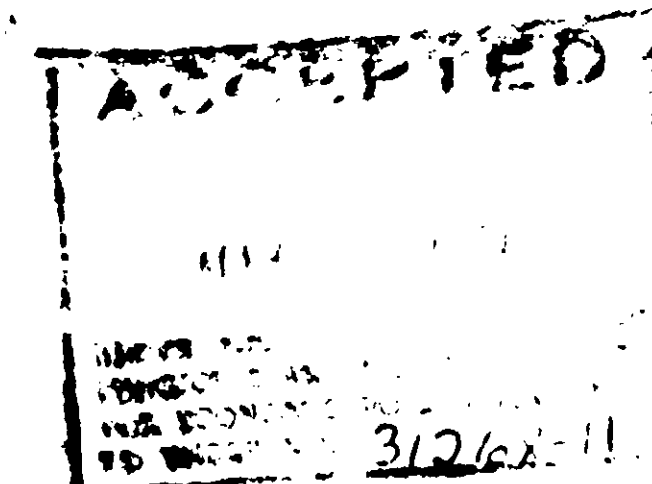
KEEP OUT OF REACH OF CHILDREN

See other precautions on side of this label

Manufactured by

JOHNSON-HAYWORTH CHEMICAL CO.

LA GRANGE, ILLINOIS 60525



The
when
ment
clear

Remo

Vacat
remo

Repe

Harm

This
water

Appl

Do n
or cr

NET CONTENTS _____

PYRENONE® NO. 3

Insecticide

Industrial, Mill, Livestock and Mosquito Spray

For Rapid Control of Flying and Crawling Insects Named On This Label

Use in Food Processing Plants, Canneries, Packing Houses, Mills, Elevators, Granaries, Warehouses, Box Cars, Ships' Holds, Breweries, Bottling Plants, Bakeries, Stores, Markets, Theaters, Hospitals, Schools, Hotels, Motels, Restaurants, Dairies, Barns and Milk Rooms.

Kills and Repels Flies, Mosquitoes and Gnats on Cattle, Horses and Hogs.

The Insecticidal Components (Piperonyl Butoxide and Pyrethrins) are classified as food additives and When This Product is Used as Directed, Allowable Tolerance Levels Will Not Be Exceeded.

ACTIVE INGREDIENTS

100%

Pyrethrins	0.13%
*Piperonyl Butoxide, Technical	1.27%
Petroleum Distillate	98.60%

*Equivalent to 1.02% (butylcarbityl) (6-propylpiperonyl) ether and to 0.25% of related compounds.

CAUTION

KEEP OUT OF REACH OF CHILDREN

See other precautions on side of this label

Manufactured by

JOHNSON-HAYWORTH CHEMICAL CO.

LA GRANGE, ILLINOIS 60525

Use Precautions

The use of this product in food processing plants should be confined to time periods when the plant is not in operation. Foods should be removed or covered before treatment. All food processing surfaces should be covered during treatment or thoroughly cleaned before using.

Remove any birds, pets or fish aquariums before spraying.

Vacate premises after treatment and ventilate before reoccupying. Sweep up and remove dead insects.

Repeat treatment when re-infestation occurs.

CAUTION:

Harmful if swallowed. Avoid contamination of feed and foodstuffs.

This product is toxic to fish. Keep out of lakes, streams or ponds. Do not contaminate water by cleaning of equipment or disposal of wastes.

Apply this product only as specified on this label.

Do not reuse empty container. Return to drum reconditioner or destroy by perforating or crushing and burying in a safe place away from water supplies.

EPA Reg. No. 31268-11

Establishment No

JOHNSON-HAYWORTH CHEMICAL CO.

