

DANGER

ELFUME (aluminum phosphide) releases poisonous gas when exposed to moisture. Poisonous if swallowed. Do not get on skin or in the eyes. Keep away from water. Wear gloves when handling and wash hands immediately after handling. ELFUME should be handled by experienced persons only. Do not open containers except for short term usage. Do not open in confined areas. Open containers only in well ventilated areas, preferably outside. Storage of ELFUME should be in cool, dry and well ventilated areas. Keep in hand in good working order, a mask and canister approved by U. S. Bureau of Mines. Do not breathe vapors of dust from pellets.

POISONING SYMPTOMS

Inhalation of phosphide causes restlessness followed by tremors, fatigue and slight somnolence. The patient becomes nauseated and may suffer gastric pains, vomiting and diarrhea, thirst, headache, fasting spells, depression of the chest, and burning substernal pain.

ANTIDOTE

Remove victim to open air and remove contaminated clothing. If ingested, give a teaspoonful of water or a glass of warm water to induce vomiting. Repeat until vomit fluid is clear. CALL A PHYSICIAN IMMEDIATELY.

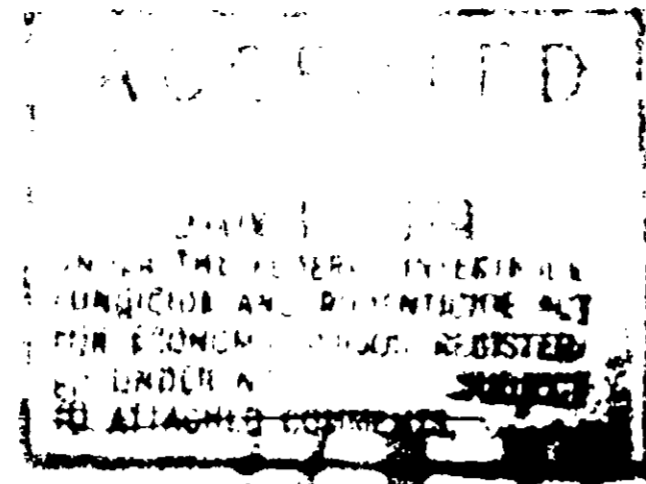
FOR FUMIGATION OF GRAIN PRODUCTS

Use ELFUME pellets in grain elevators, bins, and other storage containers. ELFUME pellets may be added to the grain through a separate dispenser or by flowing ELFUME pellets into the grain through a chute or pipe. Do not mix ELFUME pellets with other fumigants.

SUGGESTED DOSAGE

Use ELFUME pellets at a dosage rate of 100 pellets per 1,000 cu. ft. of grain. The pellets should be applied to the grain in a well ventilated area. The pellets should be applied to the grain in a well ventilated area. The pellets should be applied to the grain in a well ventilated area.

Use ELFUME pellets at a dosage rate of 100 pellets per 1,000 cu. ft. of grain. The pellets should be applied to the grain in a well ventilated area. The pellets should be applied to the grain in a well ventilated area.



112 / i

Pellets

GRAIN ELEVATOR FUMIGANT

For Use Against Stored Grain Insects

★ DANGER ★

Keep Out of the Reach of Children

See side panel for antidote statement and additional Caution labeling

ACTIVE INGREDIENT

Aluminum Phosphide

INERT INGREDIENT

MIDLAND FUMIGANT, Inc.

ELFUME has been found effective against grain insects and their pre-adult stages, eggs, larvae and pupae. These include rice and grain weevils, saw tooth grain beetle, flat or rusty grain beetle, lesser grain borer, red flour beetle, cadelle, grain moth, Mediterranean flour moth, Indian meal moth, and angoumois grain moth.

Tobacco may be fumigated with ELFUME at a dosage rate of 100 pellets per 1,000 cu. ft. Aeration time on hogheads will not be less than three days.

ELFUME may be used to fumigate static or rolling stocks of grain by use of an automatic pellet applicator with ELFUME applied to the grain stream ahead of the loading spout into the car. All cars must be properly placarded giving the date, location of fumigation point, name of fumigator, and a statement that the fumigant is aluminum phosphide which liberates poisonous phosphine gas.

Under no condition shall processed foods or animal feeds come in contact with any ELFUME nor with ELFUME residues. ELFUME shall not be placed in or attached to packages intended for consumers or cartons delivered to retailers.

Burn or Bury All Elfume Containers

ELFUME treatment does not contaminate or leave objectionable residue where instructions are properly followed. The residue of ELFUME should be removed by aspiration.

ELFUME will not impair the milling properties of the grain nor the baking quality. **ELFUME NOT FOR USE OR STORAGE IN OR AROUND THE HOME**

NOTICE: Burn or bury all ELFUME containers. Do not reuse the material not in strict accordance with the instructions given hereon.

EXCEL INDUSTRIES, Inc.
CHICAGO, ILL.

MIDLAND FUMIGANT, Inc.
CHICAGO, ILL.