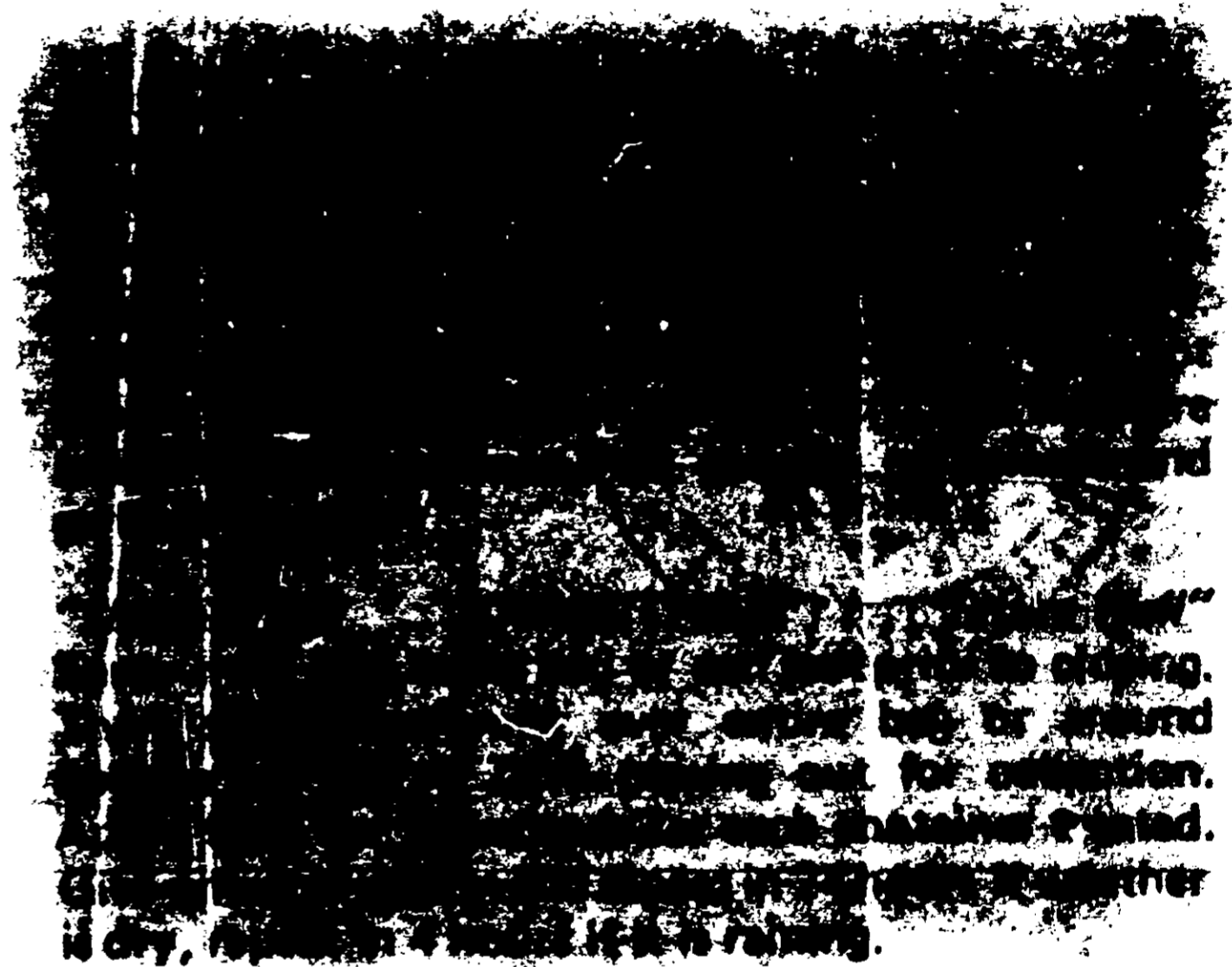




Keeps dogs and cats
from tearing up
garbage containers

\$1.98



ACTIVE INGREDIENTS —
1, 1, 1 — Trichloroethane 33.1%
Isopropyl Alcohol 33.1%
Allyl isothiocyanate .7%
INERT INGREDIENTS 33.1%

Pat. Pending

10.5 Oz. Net Wt.

— Manufactured and Distributed by —

ANI-SHIELD INC.

P. O. BOX 17067

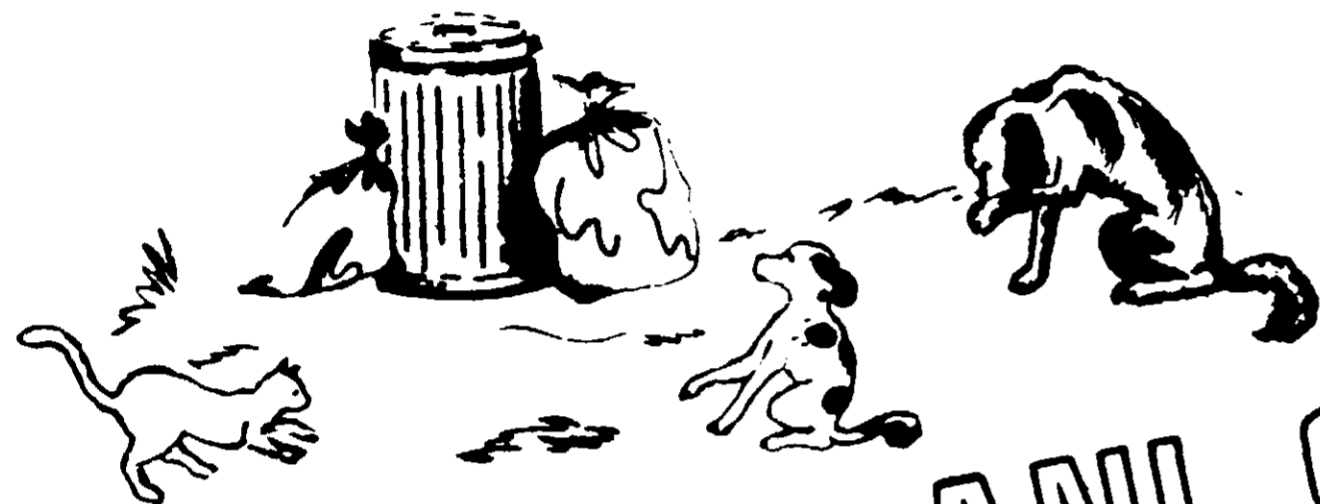
LOUISVILLE, KENTUCKY 40217

E.P.A. Reg. No. 30320-1

E.P.A. EST. NO. 5840 P

NOV 7 1974

UNDER THE FY



*Keeps dogs and cats
from tearing up
garbage containers*

\$1.98

**LASTS FOR HOURS
REPELS... REPELS
REPELS**

ANI-SHIELD
SHAKE WELL

**Caution: Read back panel
Keep out of reach of children**

ACTIVE INGREDIENTS —	
1, 1, 1 — Trichloroethane	33.1%
Isopropyl Alcohol	33.1%
Allyl isothiocyanate	.7%
INERT INGREDIENTS	33.1%

Pat. Pending

10.5 Oz. Net Wt.

WARNING

Irritating to eyes, nose, and skin. If exposed to contents in any way, wash exposed area with clear water immediately. Harmful if swallowed. Do not puncture or incinerate, contents under pressure. **KEEP OUT OF CHILDREN'S REACH.** Do not expose to temperature in excess of 120° F. Store away from heat. Spray on garbage containers and garbage bags only.

"Shake Well" **DIRECTIONS** *"Shake Well"*
Spray mist into trash bag or can just prior to closing. Then spray fine mist over entire bag or around bottom of lid **AFTER** placing out for collection. Apply fully for 10 seconds for each container treated. Give one application and repeat in 24 hours if weather is dry, repeat in 4 hours if it is raining.

Manufactured and Distributed by:
ANI-SHIELD INC.
P.O. BOX 11062
COLUMBUS, KENTUCKY 40011