



U.S. ENVIRONMENTAL PROTECTION AGENCY
Office of Pesticide Programs
Registration Division (H7505C)
401 "M" St., S.W.
Washington, D.C. 20460

EPA Reg. Number:

28293-325

Date of Issuance:

04/11/2000

Term of Issuance: **Conditional**

Name of Pesticide Product:

Unicorn Delta HPC

NOTICE OF PESTICIDE:

Registration

Reregistration

(under FIFRA, as amended)

Name and Address of Registrant (include ZIP Code):

**Unicorn Laboratories
12385 Automobile Blvd.
Clearwater, FL 33762**

Note: Changes in labeling differing in substance from that accepted in connection with this registration must be submitted to and accepted by the Registration Division prior to use of the label in commerce. In any correspondence on this product always refer to the above EPA registration number.

On the basis of information furnished by the registrant, the above named pesticide is hereby registered/reregistered under the Federal Insecticide, Fungicide and Rodenticide Act.

Registration is in no way to be construed as an endorsement or recommendation of this product by the Agency. In order to protect health and the environment, the Administrator, on his motion, may at any time suspend or cancel the registration of a pesticide in accordance with the Act. The acceptance of any name in connection with the registration of a product under this Act is not to be construed as giving the registrant a right to exclusive use of the name or to its use if it has been covered by others.

This product is conditionally registered in accordance with FIFRA sec. 3(c)(7)(A), provided that you:

1. Submit and/or cite all data required for registration/reregistration of your product under FIFRA sec. 3(c)(5) when the Agency requires all registrants of similar products to submit such data; and submit acceptable responses required for reregistration of your product under FIFRA section 4.
2. **Make the following labeling changes:**
 - a) Revise the EPA Registration Number to read "EPA Reg. No. 28293-325"
 - b) Your CSF has been approved. Your product is toxicologically similar to EPA Reg. No. 432-857 and the acute toxicity data for that product can be used in support of this product.
 - c) When applying to cracks and crevices, baseboards, windows, etc., please add the statement "Spray until the surface is just damp, but not to the point of run-off. Avoid excess application."

Signature of Approving Official:

Mary Lynn Keigwin

for *George T. La Rocca*

Date:

04/11/2000

- d) Please identify what the user is being protected from for "Keeps killing for up to XX weeks, months, days" on the front panel. Are you claiming all insects or certain insects/pests? You may want to check with your supplier of the source product in this regard.
 - e) We did not find any cited efficacy data in your data matrix for hornets, wasps, yellow jackets, bees and bedbugs. Please submit or have Aventis Environmental Health cite (with MRID numbers) this data with your final printed labeling.
 - f) Please remove the claims "Odorless" and "No Unpleasant Odor". Many people are chemically sensitive and would not find this statement accurate.
 - g) What does the HPC stand for in the product name?
 - h) Please delete the claim for ticks from "Kills fleas and Ticks". The lowest concentration for which we have effectiveness data is 50% higher than that in the cited product. Also, delete directions and all reference to treating ticks from the label. Aventis Environmental Health has informed us that they will be revising their application instructions to ensure delivery of a rate that will support this claim. Please contact them for these application rates.
3. Please submit two (2) copies of your final printed label for before your release the product for shipment. Please refer to the A-79 enclosure for a further description of final printed labeling. If these conditions are not complied with, the registration will be subject to cancellation in accordance with FIFRA section 6(e). Your release for shipment of the product bearing amended labeling constitutes acceptance of these conditions. A stamped copy of the label is enclosed for your records.

If you have any questions regarding this action, please contact Tracy Keigwin of my team at (703) 305-6605.

Sincerely,

George T. LaRocca
Product Manager (13)
Insecticide Branch
Registration Division (7505C)

UNICORN DELTA HPC

[Indicates alternate text]

[• For Indoor and Outdoor Use

- Ready-To-Use
- Easy-To-Use
- Water-Based
- New Formulation
- Kills On Contact
- Kills Fast
- Long-Lasting
- Keeps Killing for up to 4 [8, 12, 16] Weeks
- Keeps Killing for up to 1 [2, 3, 4] Months
- Keeps Killing for up to 30 [60, 90, 120] Days
- No Drips - No Runs
- Stays Where You Put It
- Odorless
- No Unpleasant Odor
- Non-Staining
- Does not Stain Surfaces
- Does not Stain Fabrics
- No Oily [Greasy] Residue
- Contains Deltamethrin - the third generation pyrethroid

- No Shaking Required
- No Shake Formula
- Novel - No Drip Formula
- For Use in and Around Horse Stables
- For Use On House Plants
- For Use on Ornamental Plants
- Kills Fleas & Ticks
- Kills Home Invading Pests
- Kills Spiders, Centipedes and Scorpions
- Kills Roaches, Ants and Fleas on Contact
- Kills Pantry Pests
- Kills Plant Pests
- Kills Aphids, Mealy Bugs, Lace Bugs, Thrips, Leafminers and Mites
- Kills Spider Mites
- Kills Japanese Beetles
- Not for Use on Plants Grown for Sale or other Commercial Use]

ACTIVE INGREDIENT:

Deltamethrin..... 0.02%

OTHER INGREDIENTS:..... 99.98%
100.00%

**KEEP OUT OF REACH OF CHILDREN
CAUTION**

See Side/Back Panel for Additional Precautionary Statements

ACCEPTED
with COMMENTS
in EPA Letter Dated

APR 11 2000

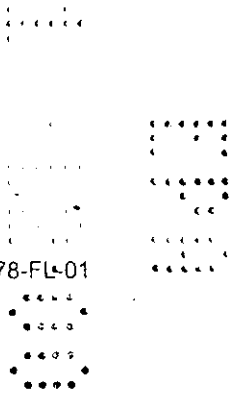
Under the Federal Insecticide,
Fungicide, and Rodenticide Act
as amended, for the pesticide
registered under EPA Reg. No.
28293-325

NET CONTENTS:

**Manufactured for:
UNICORN LABORATORIES
12385 Automobile Blvd.
Clearwater, FL 33762**

EPA Reg. No. 28293-(P)

EPA EST. NO. 62478-FL-01



PRECAUTIONARY STATEMENTS
Hazards to Humans & Domestic Animals

CAUTION: Contact with product may result in transient tingling and reddening of the skin. Avoid contact with skin or clothing.

Environmental Hazards

This product is extremely toxic to fish and aquatic invertebrates. Do not apply directly to lakes, streams, rivers or ponds. Do not dump leftover pesticide or rinse water into drains or sewers. This product is highly toxic to bees exposed to direct treatment or residues on blooming crops or weeds. Do not apply this product or allow it to drift to blooming crops or weeds if bees are visiting the treatment area.

Physical or Chemical Hazards

Do not apply this product in or on electrical equipment due to possibility of shock hazard.

DIRECTIONS FOR USE

It is a violation of Federal law to use this product in a manner inconsistent with its labeling.

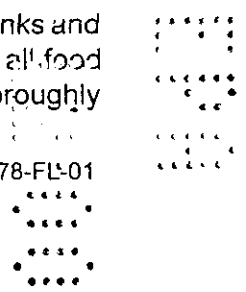
General Information: Hold container upright. Do not spray up into air. Apply to surfaces only as a spot and crack & crevice treatment. Turn sprayer nozzle to "on" position. Hold approximately 12 inches from surface to be sprayed. Squeeze trigger to spray until surface is slightly moist.

This product's long-lasting action keeps on killing for up to [30, 60, 90, 120 days; 4, 8, 12, 16 weeks; 1, 2, 3, 4 months] after you spray. Contact kill gives you immediate results when spraying insects directly, while residual activity kills insects when they return to treated areas. This product will not stain surfaces or fabrics.

The product is intended to be used in and around residences and their immediate surroundings such as (but not limited to): **apartments, atriums, attics, automobiles, basements, bathrooms, boats, cabins, campers, carports, cat sleeping quarters, clothes storage, condominiums, decks, dens, driveways, garages, gazebos, homes, kitchens, lanais, living rooms, parlors, patios, pet sleeping areas, play rooms, porches, recreational vehicles, rooms, solariums, storage areas, sun rooms, utility rooms and verandahs.** Do not use in commercial food handling establishments, restaurants or other places where food is commercially prepared or processed.

INDOORS:

Cockroaches (including adult and immature stages of both non-resistant and organophosphate and carbamate resistant strains), **ants, booklice, boxelder bugs, centipedes, crickets, dermestids, firebrats, fleas, palmetto bugs, silverfish, sowbugs, ticks and waterbugs:** Apply as a spot and crack & crevice treatment to areas where these pests crawl and hide, especially in hidden areas around sinks and storage areas, behind baseboards, around doors and windows, behind and under refrigerators, cabinets, sinks and stoves, the underside of shelves, drawers, bookcases, and similar areas. Cover all food handling surfaces and cover or remove all food and cooking utensils or wash thoroughly



after treatment. Exposed food should be covered or removed. Repeat as necessary but not more than once per week.

[ROACHES: Spray in cracks and crevices, around baseboards and other hiding places.]

Ants: Spray around ant trails, doors and windows and other places where ants enter the house. Repeat as necessary but not more than once per week.

Carpenter Ants: For effective control, locate and treat nests and surrounding areas. Apply around doors and windows and other places where ants enter premises and where they crawl and hide. Spray into infested wood through existing openings.

Ticks (Including ticks that may cause Lyme disease) and Fleas on Surfaces: Remove pet bedding and destroy or clean thoroughly. Spray pet resting quarters. Adult fleas and larvae contacted by spray will be killed. Put fresh bedding down once spray has dried. Do not spray animals directly. For best results, pets should be treated with an appropriate flea and/or tick control product registered for use on pets before allowing them to return to the treated area. Spray rugs and carpets where infestations are bad. Delicate fabrics should be tested for staining in an inconspicuous area prior to use.

Spiders: Apply along and behind baseboards, to window and door frames, corners, pipes, storage localities, attics, crawl spaces and other areas over which these pests may crawl.

Centipedes, Ground Beetles, Pillbugs, Sowbugs, Scorpions and Ticks: Apply around doors and windows and other places where these pests may enter premises. Treat baseboards, storage areas and other locations where these pests are found.

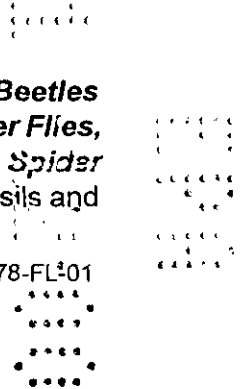
[SILVERFISH, CRICKETS, SPIDERS: Apply to areas infested by these pests.]

FLYING INSECTS: Houseflies, gnats mosquitoes and small flying moths: Spray localized resting areas, such as under eaves, porches, inside surfaces of window and door frames, surfaces around light fixtures and cords, railings, etc. and anywhere these insects may rest. Insects coming to rest on treated surfaces will be killed.

[FLYING INSECTS: Spray resting areas. Insects coming to rest on treated surfaces will be killed.]

HORSE STABLES: To Control **stable flies, horn flies, house flies, face flies, horse flies, deer flies, mosquitoes and gnats.** Apply thoroughly to surfaces until wet. Insects coming to rest on treated surfaces will be killed or repelled. Repeat treatment as necessary but not more than once per week. Do not spray animals or humans, or apply to animal feed or watering equipment.

PANTRY PESTS - Grain Beetles (Rusty, Merchant and Saw-toothed), Flour Beetles (Red and Confused), Chocolate Moths, Cigarette Beetles, Clover Mites, Cluster Flies, Drugstore Beetles, Elmleaf Beetles, Rice Weevils, Lesser Grain Borers, Spider Beetles and Tobacco Moths: Treat exposed stages. Remove all food-stuffs, utensils and



shelf paper from area to be treated. Discard used shelf paper and any infested foodstuffs. Apply spray to shelves and in cracks and crevices behind and under cupboards and cabinets. Allow to dry prior to replacement of shelf paper, food and utensils. Wash any exposed food handling surfaces and utensils before use.

Carpet Beetles (Black, Furniture and Varied): Spray on and under edges of floor coverings, under rugs and furniture and in closets or other localities where these insects are found.

Webbing Clothes Moths: Use this product as a crack and crevice treatment in closets and other storage areas where these pests are found. This is an adjunct treatment and will not control moth larvae already on clothes. Do not apply to clothing.

Bedbugs: Remove linens and wash before reuse. Lightly spray mattresses, especially tufts, folds and edges. Apply to the interior of the frame. Allow to dry before remaking bed.

OUTDOORS:

Point sprayer away from face. Hold sprayer on a slight downward angle, approximately 12 inches from surface to be sprayed. Spray with wind if breeze is blowing. Do not contaminate fish ponds or apply directly to water.

PESTS ON OUTSIDE SURFACES OF BUILDINGS: For control of building infestation to **ants, clover mites, crickets and sowbugs (pillbugs).** Spray foundation of building where insects are active and may find entrance up to a height of 2 to 3 feet. Apply as to outside surfaces of buildings where insects tend to congregate. Spray areas include (but are not limited to) screens, window frames, eaves, porches, patios, garages and refuse dumps. Repeat treatment as necessary but not more than once per week.

CRAWLING INSECTS: ants, cockroaches (including Asian cockroaches), centipedes, crickets, mole crickets, water bugs and silverfish. Spray infested surface of patio or picnic area. Also spray legs of tables and chairs.

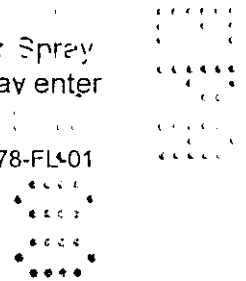
Ants: Spray freely around ant trails and hills. Spray around nests hidden under steps, brickwork, concrete, etc. Break apart accessible nests and spray freely on and around debris. Repeat as necessary but not more than once per week.

[ANTS: Spray ant trails and hills. If nest can be located, spray surface of nest until wet.]

Lone Star Ticks, Dog Ticks, Crickets and Fleas: Apply thoroughly to infestation in bushes, grass or weeds. Retreat weekly if necessary.

Wasps, Mud Daubers, Hornets, Yellow Jackets and Bees: Spray nests and other surfaces where bees may rest. Aim spray at nest openings. Applications should be made late in the evening when insects are at rest.

FLYING INSECTS: Houseflies, gnats, mosquitoes and small flying moths: Spray outside surfaces of window and door frames and other areas where these pests may enter



the home. Also spray localized resting areas, such as under eaves, porches, surfaces around light fixtures and cords, railings, etc. where these insects may rest. Insects coming to rest on treated surfaces will be killed.

TERMITES, CARPENTER ANTS AND CARPENTER BEES: (for localized control only) Apply this product to voids or channels in damaged wood of a structure, or to cracks, crevices and spaces in and between wooden portions of a structure or between wood and the foundation, in locations vulnerable to attack such as crawl spaces. Retreat if needed but not more than once per week.

For termites, the purpose of such applications is to kill workers or winged forms which may be present in the treated areas at the time of application. Not recommended as sole protection against termites. For active infestations, get a professional inspection. Such applications are not a substitute for mechanical alteration, soil treatment or foundation treatment but are merely a supplement. For severe termite infestation, contact a professional pest control operator in your area.

HOUSE PLANTS: To control *aphids, Japanese beetles, lace bugs, leafminers, mealy bugs, mites* and *spider mites* on house plants. Prior to spraying, remove plants from living and eating areas. Put in an area not likely to come in contact with pets, children or food. Plants can be returned to original location when leaves dry. If plants cannot be moved, cover or remove exposed food and food handling surfaces. Avoid spraying surrounding areas.

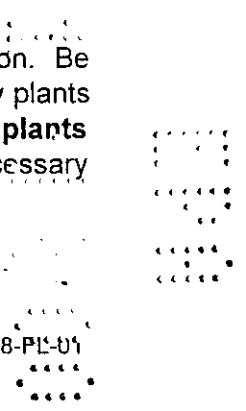
Apply spray to upper and lower surfaces of foliage. Avoid wetting blossoms if possible. Repeat applications as necessary but not more than once per week.

FOR CONTROL OF ORNAMENTAL GARDEN INSECTS: For use on roses, dahlias, asters and other ornamentals to kill *Japanese beetles* hit by spray, as well as *whiteflies, aphids, army worms, lace bugs, mealy bugs, exposed thrips, payment ants, spiders, spider* and *leafminers*.

May be used on plants, as well as a multi-purpose spray in small ornamental gardens and for spot treatments to prevent insects from spreading into large garden areas.

May also be used on other plants such as African violets, asters, azaleas, begonias, camellias, carnations, chrysanthemums, delphiniums, dogwood, English ivy, euonymus, fuscia, geraniums, crassula, grape vine, Kentia palm, laurel, marigolds, rhododendrons, rubber plants, snapdragons, stocks, wandering Jews and zinnias.

When spraying plants, do not operate closer than 18 inches. Use sweeping motion. Be cautious about wetting tender foliage, young plants and new growth. Do not spray plants when temperatures exceed 90°F. **DO NOT apply to vegetable plants or other plants used for food.** Spray insects directly whenever possible. Repeat treatment as necessary but not more than once per week.



STORAGE AND DISPOSAL

Storage: Store in a cool, dry area away from children.

Container Disposal: Use product until container is empty. Offer for recycling if possible. If recycling is not available or if the container is not empty, wrap the container in several layers of paper and discard in the trash.

[Indicates alternate text]

NOTICE: Buyer assumes all responsibility for safety and use not in accordance with directions

