



82  
8  
84

# ENTERPRISE STAIN & WOOD PRESERVATIVE

CUSTOM COLOR  
SEMI-TRANSPARENT OIL BASE

• WATER REPELLENT  
 • RETARDS MILDEW, ROT & DECAY  
 • IDEAL FOR DECKS  
 • CONTAINS POLYURETHANE

ACCEPTED

KEEP OUT OF THE REACH OF CHILDREN  
 WARNING: Contains Polyurethane

Clear Oil Base 7612-01 120 Fl. Oz. 13.54

JT 16575 LR 592

### Custom Color

Semi-Transparent Custom Color Stain & Wood Preservative will coat your wood and highlight the beauty of the grain. When applied on weathered, previously stained surfaces, the resulting color may vary from any sample chips shown. Therefore, apply stain first to a small, inconspicuous area to check color.

### Type of Finish

Semi-transparent

### Where to Use

Excellent for use on new unprimed or weathered exterior wood siding, decks and fences.

Not recommended for abraded plywood, outdoor furniture below-ground surfaces or plywood with overlays. DO NOT USE on hard-board siding or interior surfaces.

### Coverage

On very porous, unprimed surfaces 100-200 sq ft (9.3-18.6m<sup>2</sup>) per gallon. On weathered, previously stained surfaces, approximately 100-300 sq ft (9.3-27.9m<sup>2</sup>) per gallon.

### Drying Time

Dries to touch rapidly. Thorough drying requires 24 hours. If desired, a second coat may be applied (within 24 hours) after the initial application. IMPORTANT: ALLOW WOOD TO DRY TWO TO THREE DAYS AFTER HEAVY RAIN BEFORE STAINING.

### Cleanup

Clean equipment promptly with brush, cleaner or mineral spirits.

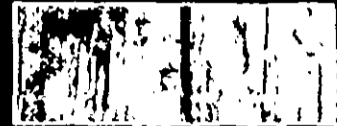
### Extractive Bleeding

Woods such as redwood, cedar, mahogany and Douglas fir contain natural water-soluble materials which may bleed or migrate through to the surface. This bleeding is normally reddish brown in cedar and black in redwood. Extractive bleeding is not damaging to the durability or protective quality of this coating. It can be removed with a mild nonabrasive detergent solution.

EPA EST NO 9232-IL-1



Resists Mildew



Resists Rotting and Decay



Resists Color Washoff

### Stain & Wood Preservative

This Polyurethane Stain and Wood Preservative made in both semi-transparent and solid colors is a deep penetrating product to protect and color in one operation while giving protection against wood rot, mildew, warping and

swelling. This Polyurethane Base Stain contains the very effective fungicide (TBTO - a metallic tin derivative) and a water repellent. These chemicals produce:  
1) a screen to filter out the sun's rays

2) fade resistance  
3) a moisture barrier to resist that cause rot and mildew  
4) exceeds water repell requirements of Federal TT-W-572b 37

### Directions for Use

It is a violation of Federal law to use this product in a manner inconsistent with its labeling.

**Mixing is Important:** Pour 1/2 of stain into another container. Stir remaining pigment and oil from bottom to top. Then pour both contents together into the original can and stir. Next, to assure custom color uniformity, intermix all cans in another container. Stir occasionally during use.

**Application:** Apply liberally by brush, roller or spray. For best results, apply between 40°F-90°F (5°C-32°C). Do not use in hot sunlight. The greater the amount of

preservative absorbed by the wood, the more effective the protection.

**Surface Preparation:** Clean discolored areas with detergent and water to remove dirt. If discoloration is due to either resin bleed or mildew, treat as follows: Remove wood resin by sanding. If you suspect mildew, scrub area with solution of 1 part of household bleach and 3 parts of water. After 30 minutes, rinse or hose with clear water. Allow to dry thoroughly. Replace rotted boards and wash surrounding areas with above 1-to-3 solution. Seal cracks

around openings with caulk. Be sure surface is clean. If repainting is ever desired, surface must be well-weathered (Pressure treated lumber weathered six months staining). For better adhesion, weathered areas should be primed before staining.

### STORAGE AND DISPOSAL

Do not reuse empty container. Wrap container and place in trash collection.

### Precautionary Statements

#### HAZARDS TO HUMANS AND DOMESTIC ANIMALS

**WARNING:** May be fatal if swallowed. Avoid contact with skin, eyes, or clothing. Avoid breathing of spray mist. Use with adequate ventilation. Avoid contamination with food. First Aid: If swallowed, do not induce vomiting. CONTAINS PETROLEUM DISTILLATES. Drink promptly a large quantity of milk, egg whites, gelatin

solution or if these are not available, drink large quantities of water. GET MEDICAL ATTENTION IMMEDIATELY. In case of eye contact, flush with plenty of water for at least 15 minutes and get medical attention.

In case of contact with skin or clothing, remove contaminated clothing and wash skin with soap and water.

#### ENVIRONMENTAL HAZARDS

This product is toxic to fish.

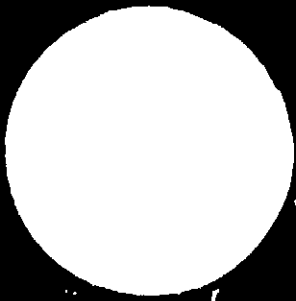
Do not apply directly to water. Do not contaminate water. Do not use for cleaning of equipment or disposal of waste. Apply product only as specified on this label. If painting is desired, surface must be well-weathered.

#### PHYSICAL AND CHEMICAL HAZARDS

DO NOT USE, POUR, OR STORE NEAR HEAT OR OPEN FLAME.

ENTERPRISE SEMI-TRANSPARENT  
OIL BASE STAIN & WOOD  
PRESERVATIVE CLEAR TINT BASE  
Non-Photochemically Resistant  
Solids & Gels ..... 4.01%  
Thickener ..... 21.74%  
Carbonyl ..... 0.66%  
Additive ..... 1.21%  
Benzoin Resin ..... 0.10%  
S-Toluene-2-Thiopyridyl Butyl  
Carbamate ..... 0.05%  
Petroleum Distillates ..... 71.00%  
Polyurethane Alcohol Partially Esterified  
with Urethane, Urethane Oxide, Polyurethane  
and Carbonyl Compounds, 2,2,4,4-Tetrahydroxy  
and 2,2,4,4-Tetrahydroxy-4-methyl-1,3-dioxane  
6701-10-24-2

Liters)



# ENTERPRISE STAIN & WOOD PRESERVATIVE

CUSTOM COLOR  
SOLID COLOR/OIL BASE

Because this custom shade has been specially mixed for you, it may not be returned for credit.

Color No. \_\_\_\_\_  
Ask sales personnel to mix your color for you.

- WATER REPELLENT
- RETARDS MILDEW, ROT & DECAY
- CONTAINS POLYURETHANE

KEEP OUT OF THE REACH OF CHILDREN.  
**WARNING: SEE ADDITIONAL PRECAUTIONS ON BACK OF LABEL.**  
EPA REG. NO. 25014-3

ACTIVE INGREDIENTS:	
Bis (Tributyltin) Oxide	0.30%
3-Iodo-2-Propynyl Butyl Carbamate	0.05%
INERT INGREDIENTS	99.65%
	100.00%

Light Tint Base 7618-01 120 Fl. Oz. (3)



### Custom Color

Solid Color Custom Color Stain & Wood Preservative will cover the grain of your wood while still showing the wood texture. When applied on weathered, previously stained surfaces, the resulting color may vary from any sample chips shown. Therefore, apply stain first to a small, inconspicuous area to check color.

### Type of Finish

Flat solid color

### Where to Use

Excellent for use on new unprimed or weathered exterior wood siding and fences.

Not recommended for abraded plywood, outdoor furniture, plywood with overlays, high traffic areas or below ground surfaces. DO NOT USE on decks, hardboard siding or interior surfaces.

### Coverage

On very porous unprimed surfaces: 100-200 sq. ft. (9.3-18.6m<sup>2</sup>) per gallon. On weathered, previously stained surfaces approximately 100-300 sq. ft. (9.3-27.9m<sup>2</sup>) per gallon.

### Drying Time

Dries to touch rapidly. Thorough drying requires 24 hours. If desired, a second coat may be applied (within 24 hours) after the initial application. IMPORTANT: ALLOW WOOD TO DRY TWO TO THREE DAYS AFTER HEAVY RAIN BEFORE STAINING.

### Cleanup

Clean equipment promptly with brush cleaner or mineral spirits.

### Extractive Bleeding

Woods such as redwood, cedar, mahogany and Douglas fir contain natural water-soluble materials which may bleed or migrate through to the surface. This bleeding is normally reddish brown in cedar and black in redwood. Extractive bleeding is not damaging to the durability or protective quality of this coating. It can be removed with a mild nonabrasive detergent solution.

EPA EST. NO 9232-IL-1



Resists Mildew



Resists Rotting and Decay



Resists Color Washoff

### Stain & Wood Preservative

This Polyurethane Stain and Wood Preservative made in both semi-transparent and solid colors is a deep penetrating product to protect and color in one operation while giving protection against wood rot, mildew, warping and

swelling. This Polyurethane Base Stain contains the very effective fungicide (TBTO—a metallic tin derivative) and a water repellent. These chemicals produce: 1) a screen to filter out the sun's rays

2) fade resistance  
3) a moisture barrier to resist fungi that cause rot and mildew  
4) exceeds water repellency requirements of Federal Spec TT-W-572b 3-7

### Directions for Use

It is a violation of Federal law to use this product in a manner inconsistent with its labeling.

Mixing is important: Pour 1/2 of stain into another container. Stir remaining pigment and oil from bottom to top. Then pour both contents together into the original can and stir. Next, to assure custom color uniformity, intermix all cans in another container. Stir occasionally during use.

Application: Apply liberally by brush, roller or spray. For best results, apply between 40°F-90°F (5°C-32°C). Do not use in hot sunlight. The greater the amount of

preservative absorbed by the wood, the more effective the protection.

Surface Preparation: Clean discolored areas with detergent and water to remove dirt. If discoloration is due to either resin bleed or mildew, treat as follows: Remove wood resin by sanding. If you suspect mildew, scrub area with solution of 1 part of household bleach and 3 parts of water. After 30 minutes, rinse or hose with clear water. Allow to dry thoroughly. Replace rotted boards and wash surrounding areas with above 1-to-3 solution.

Seal cracks around openings with caulking. Be sure surface is clean and dry. If repainting is ever desired, surface must be well-weathered. (Pressure treated lumber must be weathered six months before staining.) For better adhesion, unweathered areas should be dulled before staining.

### STORAGE AND DISPOSAL

Do not reuse empty container. Wrap container and put in trash collection.

### Precautionary Statements

#### HAZARDS TO HUMANS AND DOMESTIC ANIMALS

WARNING: May be fatal if swallowed. Avoid contact with skin, eyes, or clothing. Avoid breathing of spray mist. Use with adequate ventilation. Avoid contamination with food. First Aid: If swallowed, do not induce vomiting. CONTAINS PETROLEUM DISTILLATES. Drink promptly a large quantity of milk, egg whites, gelatin

solution or if these are not available, drink large quantities of water. GET MEDICAL ATTENTION IMMEDIATELY. In case of eye contact, flush with plenty of water for at least 15 minutes and get medical attention.

In case of contact with skin or clothing, remove contaminated clothing and wash skin with soap and water.

#### ENVIRONMENTAL HAZARDS

This product is toxic to fish.

Do not apply directly to water. Do not contaminate water by cleaning of equipment or disposal of waste. Apply this product only as specified on this label. If painting is ever desired, surface must be well-weathered.

#### PHYSICAL AND CHEMICAL HAZARDS

DO NOT USE, POUR, SPILL OR STORE NEAR HEAT OR OPEN FLAME.

#### ENTERPRISE SOLID COLOR OIL BASE STAIN & WOOD PRESERVATIVE - LIGHT TINT BASE

Non-Photochemically Reactive

Yellow Iron Oxide	3.15%
Silica (Silicic Acid)	0.48%
Resin (Non-volatile)	21.25%
Paraffin Wax	0.76%
Additives	1.15%
Bis (Tri-N-Butyltin) Oxide	0.00%
3-Hydroxy-2-Propyl Butyl Carbamate	0.06%
Petroleum Distillates	63.75%
	100.00%

\*Polyhydric alcohol partially esterified with linoleic, linoleic, oleic, palmitic and stearic acids, phthalic anhydride and modified with tolylene diisocyanate.

E7818 10/13/82

Manufactured for Enterprise Paint Company by The Enterprise Companies Wheeling, Illinois 60090 An Company

Liter's)