

19713-95

02/07/1984

1/10



UNITED STATES ENVIRONMENTAL PROTECTION AGENCY
WASHINGTON, D. C. 20460

34

FEB 7 1984

OFFICE OF
PESTICIDES AND TOXIC SUBSTANCES

Ms. Les Shockey
Drexel Chemical Company
P.O. Box 9306
Memphis, TN 38108

Dear Ms. Shockey:

Subject: Amendment- Revise Precautionary Statement
Drexel D-264 14G
EPA Registration No. 19713-95
Application Dated September 20, 1983

The amendment referred to above, submitted in connection with registration under the Federal Insecticide, Fungicide, and Rodenticide Act (FIFRA), is acceptable provided that you make the labeling changes listed below before you release the product for shipment bearing the amended labeling:

1. Add Diazinon before the formula name, which should then appear in brackets.
2. The serviceperson restriction has the same minimum type size requirements as the front panel KEEP OUT OF REACH OF CHILDREN.
3. Add the spreader setting chart developed in coordination with your supplier.
4. Revise the Pesticide Disposal text to read:

Wastes resulting from the use of this product may be disposed of on site or at an approved waste disposal facility.

A stamped copy of the label is enclosed for your records.

Sincerely yours,

George T. LaRocca
Product Manager (15)
Insecticide-Rodenticide Branch
Registration Division (TS-767)

Enclosure

RECEIVED

FEB 11 1984

2/10

ACCEPTED
with COMMENTS
in EPA Letter Dated:

FEB 7 1984

Under the Federal Insecticide,
Fungicide, and Rodenticide Act
as amended, for the pesticide
registered under EPA Reg. No.
19713-95



D-264 14G
DIAZINON GRANULAR INSECTICIDE

For control of certain soil insects including wireworms, cutworms
and other crop pests as listed.

ONLY FOR SALE TO, USE AND STORAGE BY SERVICEPERSONS (INCLUDING FARMERS,
COMMERCIAL PESTICIDE OPERATORS, AND TURF MAINTANCE PERSONNEL).

ACTIVE INGREDIENTS:

0,0-diethyl 0-(2-isopropyl-6-methyl-4-pyrimidinyl)
phosphorothioate 14.0%

INERT INGREDIENTS: 86.0%
TOTAL 100.0%

**KEEP OUT OF THE REACH OF CHILDREN
CAUTION**

STATEMENT OF PRACTICAL TREATMENT
IF SWALLOWED: Call a physician or Poison Control Center immediately.
Drink one or two glasses of water and induce vomiting by touching
the back of throat with finger. Repeat until vomit fluid is clear.
Do not induce vomiting or give anything by mouth to an unconscious
person.
IF INHALED: Remove victim to fresh air and apply artificial respira-
tion if indicated.
IF ON SKIN: Wash promptly with soap and water. Rinse thoroughly.
IF IN EYES: Flush eyes with plenty of water. Call a physician im-
mediately.
NOTE TO PHYSICIAN: If symptoms of cholinesterase inhibition are
present, atropine sulfate is antidotal. 2-PAM is also antidotal
and may be administered in conjunction with atropine.

See Additional Precautionary Statements On Left Panel.

EPA Reg #19713-95
EPA Est #19713-MS-1

Net Contents:

Gallons: _____
Liters: _____



PRECAUTIONARY STATEMENTS

Hazards to Humans and Domestic Animals

CAUTION

Harmful if swallowed. May be absorbed through skin. Do not breathe dust. Do not get in eyes, on skin, or on clothing. Wash thoroughly after handling and before eating or smoking. Do not permit children or pets to go into treated areas until area has completely dried. Do not use on humans.

Keep out of reach of domestic animals. Do not contaminate feed or use on household pests or livestock.

ENVIRONMENTAL HAZARDS

This product is toxic to fish, birds, and other wildlife. Birds feeding on treated areas may be killed. Do not apply directly to water. Do not contaminate water by cleaning of equipment or disposal of wastes.

Directions For Use

It is a violation of Federal Law to use this product in a manner inconsistent with its labeling.

Applications to the soil should be worked into the top few inches immediately after application with a rotary hoe, cultivator, disk, harrow, or other suitable means for greatest effectiveness.

Field and Forage Insects

Beans (Pinto)

Lesser Cornstalk Borers: Apply 7 - 14 lbs. per acre in a 6-inch band centered over the row when beans are 1/2-1 inch high.

Corn

Corn Rootworm Larvae; (Postemergence Basal Treatment)

Apply 4 1/2 - 8 1/2 oz. per 1,000 linear feet of row in a band over the row at first sign of rootworms, but not later than June 24 in the Middle Corn Belt or July 1 in the Northern Corn Belt. Cover treated band with 2-3 inches of soil.

Apply amount per acre recommended according to row spacing chart for basal treatment.

Lesser Cornstalk Borers: Apply 8 1/2 - 17 oz. per 1,000 linear feet of row in a 10-inch band centered over the row. Make application at planting time or when crop begins to emerge. Cover the treated band with 1 - 2 inches of soil.

Apply amount per acre recommended according to row spacing chart for basal treatment.

Suggested Rates According to Corn Row Spacing

| Row spacing | Linear feet of corn row per acre | Amount of D-264 14G Granular Insecticide per acre <u>Postemergence basal treatment</u> |
|-------------|----------------------------------|---|
| 48" | 10,890 | 3 - 6 lbs. |
| 42" | 12,455 | 3 1/2 - 6 1/2 lbs. |
| 40" | 13,068 | 3 1/2 - 7 lbs. |
| 38" | 13,939 | 3 3/4 - 7 1/2 lbs. |
| 36" | 14,520 | 4 - 8 lbs. |
| 30" | 17,424 | 4 3/4 - 9 1/2 lbs. |
| 24" | 21,780 | 5 3/4 - 11 1/2 lbs. |
| 20" | 26,136 | 7 - 14 lbs. |
| 15" | 34,848 | 9 1/2 - 18 1/2 lbs. |

Note: For row spacings not listed, calculate the appropriate dosage rates based on the 40-in. row figures.

European Corn Borers: Apply 7 - 14 lbs. per acre over the corn so granules fall into whorls, when 75% of plants show first-generation borers feeding. Make a second application 7 days later if needed. To control second-generation corn borers, apply 7 - 14 lbs. per acre, as above, when field count shows 100 egg masses per 100 plants.

D-264 14G, Granular Insecticide may be applied by aircraft for the above use. This material should be uniformly applied to the area to be treated at the recommended rates given above.

Fall Armyworms: Apply 7 - 14 lbs. per acre over the corn so granules fall into whorls when armyworms first appear. Repeat application if necessary.

Southwestern Corn Borers: Apply 7 - 14 lbs. per acre over the corn so granules fall into whorls when second-generation borers first appear. Repeat application one week later.

Note: Do not feed treated fodder to dairy or beef cattle or sheep for 10 days following application. Corn may be picked immediately. Temporary spotting of foliage sometimes occurs following application.

Cutworms: Broadcast 14 - 28 lbs. per acre. For surface cutworms apply just prior to planting or when larvae first appear and work into soil 1 - 2 inches. Do not apply after layby. For subterranean cutworms apply just prior to planting and work into soil 3 - 6 inches.

Seed Corn Maggots: Broadcast 14 - 28 lbs. per acre just prior to planting. Work into soil 2 inches.

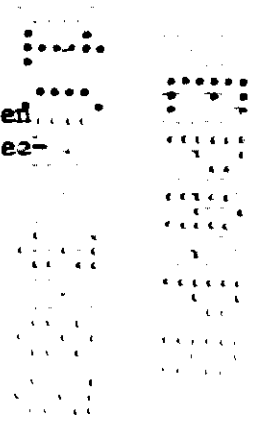
Garden Symphylans (Centipedes): Broadcast 70 lbs. per acre just prior to planting and work into soil 4 - 8 inches. This preplant treatment will also control other soil insects such as cutworms (surface and subterranean) and wireworms.

Wireworms: Broadcast 21 - 28 lbs. per acre before planting. Work into soil 4 - 6 inches.

Peanuts

Southern Corn Rootworms: Broadcast 28 lbs. per acre or the equivalent in a band over the fruiting zone, just prior to pegging. Work into top few inches of soil.

Cutworms: Apply 14 lbs. per acre in a 12-inch band over the row when cutworms first appear. Up to three additional applications at three-week intervals may be necessary. Do not apply within 21 days of peanut harvest.



Lesser Cornstalk Borers: Apply 14 - 21 lbs. per acre in a band over the fruiting zone just prior to pegging. Cover the band with 1 - 2 inches of soil.

Note: Livestock (1) may be fed peanut hulls (2) may be fed peanut forage 7 days following treatment and (3) may be fed peanut hay 21 days following treatment.

Sorghum

Cutworms: Broadcast 14 - 28 lbs. per acre just prior to planting. Work into soil 2 - 3 inches to control surface cutworms; 3 - 6 inches to control subterranean cutworms.

Lesser Cornstalk Borers: Apply 7 - 14 lbs. per acre in a 10-inch band over the row at planting time or as crop emerges. Cover the band with 1 - 2 inches of soil

Note: Do not apply directly to the seed furrow as reduction of sorghum seed germination may occur.

Soybeans

Cutworms: Broadcast 14 - 28 lbs. per acre just prior to planting. Work into soil 2 - 3 inches to control surface cutworms; 3 - 6 inches to control subterranean cutworms.

Lesser Cornstalk Borers: Apply 7 - 14 lbs. per acre in a 6-inch band over the row just prior to planting or when soybeans are 1 - 2 inches high. Cover the band with 1 - 2 inches of soil.

Sugar Beets

Sugar Beets Root Maggots: Apply 7 - 14 lbs. per acre in a 5 - 7 inch band (based on row width of 22 in.) or 4.7 - 9.4 oz. per 1,000 linear feet of row in a 5 - 7 inch band either incorporated 2 - 3 inches at planting or applied above the seed after the seed is covered. Apply ahead of the press wheel. If a heavy maggot infestation is anticipated or a wet spring occurs, a second application may be made, early postemergence, when the adult maggots (flies) first start to appear. If a second application is necessary, apply 7 - 10½ lbs. per acre in a 5 - 7 inch band (based on row width of 22 in.) or 4.7 - 7.1 oz. per 1,000 linear feet of row in a 5 - 7 inch band directly over the row.

Note: D-264 14G, Granular Insecticide should not come in direct contact with the seed or injury will occur.

Wireworms: Broadcast 21 - 28 lbs. per acre just prior to planting. Work into soil 4 - 8 inches.

Sugarcane

Sugarcane Borers: Broadcast 10½ - 17½ lbs. per acre after joints have begun to form and when at least 5% of plants show borers feeding in or under the leaf sheath, but which have not bored into the stalks. Additional applications may be necessary to assure continuing control.

Note: Do not make more than four applications per growing season. Allow 28 days between last application and harvest. At that time bagasse and forage may be fed to livestock.

Wireworms: Apply 42 lbs. per acre in a 12-inch band over the open furrow, directly to seed peices.

Tobacco

Cutworms: Broadcast 14 - 21 lbs. per acre before transplanting. Work into soil 2 - 4 inches.

Mole Crickets: Apply 7 lbs. per acre when insects are present. Make application to plant beds or fields, 1 - 2 days prior to sowing of seed or transplanting and work into soil 1 - 2 inches.

Seed Corn Maggots: Broadcast 10½ lbs. per acre 3 - 4 weeks before transplanting. Work into soil 2 inches.

Wireworms: Broadcast 14 - 21 lbs. per acre 3 - 4 weeks before transplanting. Work into soil 6 - 9 inches.

Forage Crops (Alfalfa, Clover, Cowpeas, and Lespedeza)

Cutworms: Broadcast 14 - 28 lbs. per acre just prior to planting. Work into soil 2 - 3 inches to control surface cutworms, 3 - 6 inches to control subterranean cutworms.

Vegetable CropsInsects

Broccoli, Brussels Sprouts, Cabbage, and Cauliflower

Root Maggots: Broadcast 14 - 21 lbs. per acre before planting or transplanting. Work into soil 3 - 4 inches.

Onions

Onion Maggots: Apply 14-28 lbs. per acre as a broadcast soil treatment just prior to planting. Thoroughly mix the chemical into the top 3 - 4 inches of soil by disking, harrowing, or other suitable means.

Radishes

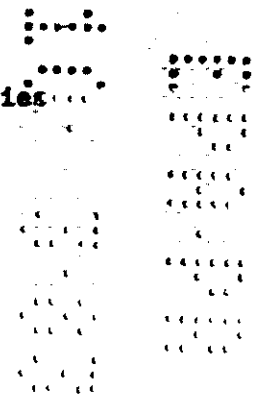
Root Maggots: Apply 10½ - 14 lbs. per acre (2½ - 2 4/5 oz. per 1,000 linear feet of row) in the seed furrow at planting time.

Sweet Corn

See Corn under Field and Forage insects.

Tomatoes

Vinegar Flies (Drosophila spp.): Broadcast 7 lbs. per acre when flies first appear. Repeat in 7 - 10 day intervals or as required.



Other Vegetable Insects

Cutworms (Surface and Subterranean)

| | | |
|------------------|-------------------|---------------|
| Broccoli | Endive (escarole) | Pole Beans |
| Brussels Sprouts | Kale | Snap Beans |
| Cabbage | Lettuce | Spinach |
| | Lima Beans | Summer Squash |
| Cantaloupes | Muskmelons | Swiss Chard |
| Cauliflower | Parsley | Tomatoes |
| Celery | Peas | Watermelons |
| Collards | Peppers | Winter Squash |
| Cucumbers | | |

Broadcast 14 - 28 lbs. per acre just prior to planting. Work into soil 2 - 3 inches to control surface cutworms, 3 - 6 inches to control subterranean cutworms.

Potatoes: Broadcast 14 - 28 lbs. per acre before planting. Work into soil 4 - 6 inches.

Garden Symphylans (Centipedes)

| | | |
|---------|------------|----------|
| Cabbage | Pole Beans | Tomatoes |
| Carrots | Radishes | Turnips |
| Lettuce | Red Beets | |
| Peas | Snap Beans | |

Broadcast 70 lbs. per acre just prior to planting. Work into soil 4 - 8 inches. This preplant treatment will also control other soil insects such as cutworms (Surface and subterranean), mole crickets, root maggots, and wireworms.

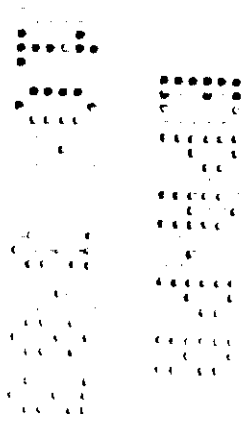
Mole Crickets

| | | |
|------------------|-------------------|----------|
| Broccoli | Endive (escarole) | Radishes |
| Brussels Sprouts | Kale | Tomatoes |
| Cabbage | Lettuce | Turnips |
| Cauliflower | Mustard | |
| Collards | Peppers | |

Apply 7 lbs. per acre when insects are present. Make application to plant beds or fields 1 - 2 days prior to sowing of seed or transplanting and work into soil 1 - 2 inches.

Lesser Cornstalk Borers

Beans (Lima, Pole, Snap): Apply 7 - 14 lbs. per acre in a 6 - inch band centered over the row. Apply when plants are 1/2 - 1 inch tall.



Wireworms

| | | |
|------------------|-------------------|----------------|
| Broccoli | Endive (escarole) | Pole Beans |
| Brussels Sprouts | Kale | Snap Beans |
| Cabbage | Lettuce | Spinach |
| Cantaloupes | Lima Beans | Summer Squash |
| Carrots | Muskmelons | Sweet Potatoes |
| Cauliflower | Onions | Swiss Chard |
| Celery | Parsley | Tomatoes |
| Collards | Peas | Watermelons |
| Cucumbers | Peppers | Winter Squash |

Broadcast 21 - 28 lbs. per acre just prior to planting. Work into soil 4 - 8 inches.

Potatoes: Broadcast 21 - 42 lbs. per acre before planting. Work into soil 4 - 8 inches or apply 7-21 lbs. per acre at planting, placing D-264 14G Granular Insecticide in bands 3 - 6 inches deep along both sides of row.

Sweet Potatoes (Southeastern U.S.): Broadcast 21 lbs. per acre over the tops of vines when roots begin to enlarge.

Small Fruit Insects

Strawberries

Mole Crickets: Apply 7 lbs. per acre when insects are present. Make application to plant beds or fields 1 - 2 days prior to transplanting and work into soil 1 - 2 inches.

Lawn Insects

Lawn Chinch Bugs: Apply 1/2 - 1 lbs. per 1,000 sq. ft. (2 1/2 - 5 lbs. per 5,000 sq. ft).

Water lawn thoroughly after application. Repeat application in 7 - 10 days if necessary. For longer residual control and on dense growing turf such as St. Augustine grass, use 1 - 1 1/2 lbs. per 1,000 sq. ft. (5-7 1/2 lbs. per 5,000 sq. ft).

Billbugs; White Grubs such as Japanese Beetle Larva, European Chafer, and Southern Chafer: Apply 1 lb. per 1,000 sq. ft. of lawn. Water grass thoroughly after application. For grub control make application any time between late July and early October. For billbug control apply when activity is first observed or when chewed or brown grass is present, indicating damage from this insect.

Hyperodes Weevil (New York only): Apply 3/4 lbs. per 1,000 sq. ft. of grass. Water grass thoroughly after application. Treat problem areas in mid-April and again in mid-May.

Need to Add "Spreader Setting Chart"

10/10

STORAGE AND DISPOSAL

Do not contaminate water, food, or feed by storage or disposal. Storage should be under lock and key and secure from access by unauthorized persons and children. Storage should be in a cool dry area away from any heat or ignition source. Protect from moisture. Avoid storage at high temperatures. Do not stack over _____ bags high. Keep bags tightly sealed when not in use. Keep away from any puncture source. Avoid storage near water supplies, food, feed and fertilizers to avoid cross contamination. Avoid contamination with water, acids and alkaline. Store in original containers only. If the contents are spilled, follow these steps:

1. Wear a respirator and gloves.
2. Sweep material into a suitable container for disposal.
3. Wash surface with water containing caustic soda, follow with a detergent wash.
4. Follow washing with clean water rinse.
5. Do not allow run-off to enter sewer or contaminate water supplies.
6. Dispose of waste as indicated below.

PESTICIDE DISPOSAL:

Pesticide wastes are toxic. Improper disposal of excess pesticide, spray mixture, or rinsate is a violation of Federal Law. If these wastes cannot be disposed of by use according to label instructions, contact your State Pesticide or Environmental Control Agency, or the Hazardous Waste representative at the EPA Regional Office for guidance.

CONTAINER DISPOSAL:

Completely empty bag into application equipment. Then dispose of empty bag in a sanitary landfill or by incineration, or if allowed by State and local authorities by burning. If burned, stay out of smoke.

WARRANTY - CONDITION OF SALE:

DIRECTIONS FOR USE of this product are based on field use and tests believed reliable and should be followed carefully. It is however impossible to eliminate all risks associated with use of this product. Because such factors as weather conditions, foreign material and manner of use for application are all beyond the control of Drexel Chemical Company or the Seller of this product, such things as crop injury, ineffectiveness or other unintended consequences may result.

ALL SUCH RISKS ARE ASSUMED BY THE BUYER.

Drexel warrants that this product conforms to the chemical description on the label and is reasonably fit for the purposes referred to in the directions for use. Drexel makes no other warranties, express or implied, including FITNESS OR MERCHANTABILITY. In no case shall Drexel or the Seller be liable for consequential, special or indirect damages resulting from the use or handling of this product contrary to label directions. The foregoing is a condition of sale by Drexel Chemical Company and is accepted as such by the Buyer.



Drexel Chemical Company

P.O. BOX 8006 MEMPHIS TENN 38108