

Crop	Pest	Rate	Timing/Special Directions
Caneberries (Ca, OR and WA only) Blackberries, Boysenberries, Dewberries, Loganberries, Raspberries) (continued)	Raspberry Crown Borers (Raspberry Root Borers)	2 qts. per acre	Apply a single application in a minimum of 100 gals. of water per acre as a drench to the crown and lower canes in the Spring before buds break.
Cherries	Eyespotted Bud Moths, Fruit Tree Leafrollers	1 pt. in 100 gals. of water	Apply in cover sprays as infestation occur beginning at petal fall. Repeat application after 7 days if necessary.
	Leafhoppers	1 pt. in 100 gals. of water	Make 3-4 applications beginning at petal fall and continuing through the growing season as infestations occur. Allow 7 days between applications.
	Cherry Fruitflies	1/2 - 1 pt. in 100 gals. of water	Make 3-4 applications beginning when adult flies begin to emerge and repeating at 10 day intervals.
	Black Cherry Aphids	1 pt. in 100 gals. of water	Apply as a cover spray when aphids appear. Repeat application after 10 days if necessary.
	San Jose Scale Crawlers	1 pt. in 100 gals. of water	Apply during the pre-pink stage or when crawlers first appear.
	Cherry Rust Mites	1/2 - 1 pt. in 100 gals. of water	Apply to trees as a single supplemental spray after harvest.

Notes: (1) Do not make more than 3 applications per season. (2) Do not apply more than 4 pts. of product per acre per application and no more than 12 pts. of product per acre per season. (3) Allow a minimum of 21 days between the last application and harvest.

Cranberries	Blackheaded Fireworms ( <i>rhopobota naevana</i> )	2 qts. in a minimum of 15 gals. of water per acre for ground application and up to 400 gals. of water per acre for chemigation.	Apply when pest appears. Repeat application after 14 days if necessary. A maximum of 6 applications per season is permitted. Do not apply within 7 days of harvest or illegal residues may occur.
	Cranberry Fruitworms	3 qts. in a minimum of 15 gals. of water per acre for ground application and up to 400 gals. of water per acre for chemigation.	Apply when pest appears. Repeat application after 14 days if necessary. A maximum of 4 applications per season is permitted. Do not apply within 7 days of harvest or illegal residues may occur.

Note: This product may be applied to cranberries through sprinkler irrigation. Refer to the Chemigation section for specific chemigation directions for use.

BEST AVAILABLE COPY

Crop	Pest	Rate	Timing/Special Directions
Grapes	Pacific Spider Mites, Leafhoppers, Grape Berry Moths, Grape Leafrollers, Omnivorous Leafrollers, Aphids, Spider Mites	1-2 pts. per acre in a minimum of 100 gals. of water	Apply as pest occurs as a thorough cover spray. Repeat application after 7 days if necessary.
	Drosophila spp.	6 fl. oz. per acre in a minimum of 100 gals. of water (300 gals. of water maximum)	Apply as pest occurs as a thorough cover spray. Repeat application after 7 days, if necessary.

Notes: (1) Do not apply more than 2 pts. of product per acre per application and no more than 10 pts. per acre per season. (2) To avoid illegal residues, allow 28 days between the last application and harvest.

Nectarines	Oriental Fruit Moths	1 pt. in 100 gals. of water	Apply at 100% petal fall. Make 2 additional applications at 10-15 day intervals. Time the last application to peak adult flight.
	Aphids, Brown Mites (Clover Mites), Two-spotted Spider Mites, Olive Scale Crawlers, San Jose Scale Crawlers, Peach Twig Borers	1 pt. in 100 gals. of water	Apply as infestations occur. Repeat application after 14 days if necessary.

Notes: (1) Do not apply more than 4 pts. of product per acre per application and no more than 12 pts. per acre per season. (2) Allow a minimum of 21 days between the last application and harvest.

Peaches	Aphids, Brown Mites (Clover Mites), Two-spotted Spider Mites, Olive Scale Crawlers, San Jose Scale Crawlers	1 pt. in 100 gals. of water	Apply as infestations occur. Repeat application after 14 days if necessary.
	Oriental Fruit Moths	1 pt. in 100 gals. of water	Apply at 100% petal fall. Make 2 additional applications at 10-15 day intervals. Time the last application to peak adult flight.
	Peach Twig Borers	1 pt. in 100 gals. of water	Apply as insects occur in May and June. Allow 7 days between applications.

13931

Crop	Pest	Rate	Timing/Special Directions
Peaches (continued)	Leafhoppers	1 pt. in 100 gals. of water	Make 3-4 applications beginning at petal fall and continuing through the growing season. Allow at least 7 days between applications.
	White Peach Scale	1 1/2 - 2 pts. in 100 gal- of water	Apply post-harvest, timed to coincide with peak crawler and immature scale activity. Under conditions of heavy infestation, 2 applications (7 days apart) may be needed. Do not apply before fruit is harvested.

Notes: (1) Do not apply more than 4 pts. of product per acre per application and no more than 12 pts. of product per acre per season. (2) Allow a minimum of 21 days between the last application and harvest.

Plums	Brown Mites (Clover Mites), European Red Mites	1 pt. in 100 gals. of water	Apply as needed every 7 days.
	Leafcurl Plum Aphids, Mealy Plum Aphids, Thistle Aphids	1/2 - 1 pt. in 100 gals. of water	Apply as needed every 7 days.

Notes: (1) Do not apply more than 4 pts. of product per acre per application and no more than 12 pts. of product per acre per season. (2) Allow a minimum of 21 days between the last application and harvest.

Prunes	Brown Mites (Clover Mites), European Red Mites	1 pt. in 100 gals. of water	Apply as needed every 7 days.
	Leafcurl Plum Aphids, Mealy Plum Aphids, Thistle Aphids	1/2 - 1 pt. in 100 gals. of water	Apply as needed every 7 days.

Notes: (1) Do not apply more than 4 pts. of product per acre per application and no more than 12 pts. of product per acre per season. (2) Allow a minimum of 21 days between the last application and harvest.

Strawberries	Aphids, Two- spotted Spider Mites	1 pt. in 100 gals. of water per acre	Apply as pests occur. Repeat application if necessary every 7 days, but do not make more than 3 applications per season. Do not apply within 5 days of harvest or illegal residues may occur.
--------------	---	---	---

Crop	Pest	Rate	Timing/Special Directions
Strawberries (continued)	Cyclamen Mites	1 qt. in 100 gals. of water per acre	Direct spray to the plant crowns. Plants should be sufficiently agitated to assure thorough coverage of the foliage. Repeat application after 7 days if necessary. Do not make more than 3 foliar applications per season. Do not apply within 5 days of harvest or illegal residues may occur. Application may be made to plants after harvest.
	Mole Crickets	1 qt. per acre	Broadcast in sufficient water to obtain even coverage when insects are present. Apply 1-2 days before transplanting and immediately incorporate into the top 1 - 2 inches of soil.
	Strawberry Leafrollers	3/4 - 1 pt. in 100 gals. of water	Apply 200 gals. of spray per acre when blossoms show color. Do not apply within 5 days of harvest or illegal residues may occur.
Walnuts (CA only)	Aphids, Spider Mites	1 qt. per acre	Apply as a foliar spray. Repeat application in 14 days if necessary. Do not make more than 3 applications per season. Do not apply within 45 days of harvest or after husks open or illegal residues may occur. Make ground applications in a minimum of 100 gals. of water per acre.
	Codling Moths, Scale Crawlers, Walnut Caterpillars	3 qts. per acre	Apply as a foliar spray. Repeat application in 14 days if necessary. Do not make more than 3 applications per season. Do not apply within 45 days of harvest or after husks open or illegal residues may occur. Make ground applications in a minimum of 100 gals. of water per acre.

### Vegetable Crops

For foliar or soil applications, Diazinon Insecticide should always be applied as a spray in sufficient water to assure thorough coverage of the foliage or soil. Diazinon Insecticide may be applied using ground or aerial application equipment as specified in the following table. This table indicates the minimum amount of water that can be used for the various methods of application. The specific amount of product to be used appears under the separate directions for use for each crop.

Crop	Ground Application		Aerial Application Minimum Gals./Acre
	Minimum Gals./Acre	OR Minimum Gals/1,000 sq.ft.	
Beans (Lima, Pole, and Snap) (succulent only)	10	2	5
Beets, Red (Table)	10	2	5
Broccoli	10	2	5
Brussels Sprouts	10	2	5
Cabbage	10	2	5
Cantaloupes	5	1	5
Carrots	10	2	5
Casabas	5	1	5
Cauliflower	10	2	5
Chinese Broccoli	10	2	5
Chinese Cabbage	10	2	5
Chinese Mustard	10	2	5
Chinese Radish (CA, FL only)	10	2	5
Collards	10	2	5
Crenshaws	5	1	5
Cucumbers	5	1	5
Endive (Escarole)	10	2	5
Ginseng	10	2	5
Honeydew Melons	5	1	5
Kale	10	2	5
Lettuce, Head	10	2	5
Lettuce, Leaf	10	2	5
Muskmelons	5	1	5
Mustard	10	2	5
Onions (Pulb and Green)	10	2	5
Parsley	10	2	5
Parsnips	10	2	5
Peas (succulent only)	10	2	5
Peppers	10	2	5
Persian Melons	5	1	5
*Potatoes (Irish)	10	2	5
Radishes	10	2	5
Spinach	10	2	5
Squash, Summer	5	1	5
Squash, Winter	5	1	5
Sweet Corn	20	4	5
Sweet Potatoes	10	2	5
Swiss Chard	10	2	5
Tomatoes	10	2	5
Turnips	10	2	5
Watermelons	5	1	5

\*Do not use on commercially grown potatoes which will be hand-harvested.

Observe stated time intervals between last application and harvest as well as intervals between and maximum numbers of applications per season. Do not apply to food crops grown in greenhouses.

## Pre-Harvest intervals (PHI\*) for Foliar Applications

Crop	PHI*(Days)
Beans (Lima, Pole, and Snap)	7
Beets, Red (Table)	14
Broccoli	7
Brussels Sprouts	7
Cabbage	21
Cantaloupes	3
Carrots	14
Casabas	3
Cauliflower	7
Chinese Broccoli	10
Chinese Cabbage	10
Chinese Mustard	10
Chinese Radish	10
Collards	10
Crenshaws	3
Cucumbers	7
Endive (Escarole)	14
Ginseng	30
Honeydew Melons	3
Kale	10
Lettuce	14
Muskmelons	3
Mustard	10
Onions (Bulb and Green)	14
Parsnips	14
Peas	7
Peppers	5
Persian Melons	3
Potatoes (Irish)	35
Radishes	14
Spinach	14
Squash, Summer	7
Squash, Winter	3
Sweet Corn	7
Swiss Chard	14
Tomatoes	1
Turnips, Roots and Tops	14
Watermelons	3

\*PHI= Pre-Harvest Interval or the number of days between the last application and harvest.

**Notes: (1) Soil Incorporation:** Following application of this product to control vegetable soil insects, immediately incorporate the product into the soil to the recommended depth (see **Timing/Special Directions**) using a rotary hoe, cultivator, disk, harrow, or other suitable means. For control of surface cutworms, incorporate 2-3 inches, for subterranean cutworms incorporate 3-6 inches. **(2) To Protect Bees:** Foliar applications of this product should not be made to peas or beans if these crops or weeds in the treatment area are in bloom, or to corn during the pollen shed period.

Crop	Pest	Rate	Timing/Special Directions
Beans (Lima, Pole, and Snap) (succulent only)	Cutworms	2 - 4 qts. per acre	Broadcast just before planting and immediately incorporate into the soil. (See Soil Incorporation Note.)
	Wireworms	3-4 qts. per acre	Broadcast just before planting and immediately incorporate into the top 4-8 inches of soil.
	Black Bean Aphids, Mexican Bean Beetles, Dipterous Leafminers	1-1/2 pts. per acre	Apply as insects occur. Repeat application as necessary, every 5 days. Do not make more than 3 applications per season. Do not apply within 7 days of harvest or illegal residues may occur. Bean forage or bean hay may be fed to dairy and beef cattle and sheep. Wait 4 days following treatment if forage is to be cut for hay. Notes: (1) Diazinon will not control organophosphate-resistant leafminers. (2) To protect bees, do not apply foliarly if the crop or weeds in the treatment area are in bloom.
	Cucumber Beetles	3/4 pt. per acre	Apply as insects occur. Repeat application as necessary, every 5 days. Do not make more than 3 applications per season. Do not apply within 7 days of harvest or illegal residues may occur. Bean forage or bean hay may be fed to dairy and beef cattle and sheep. Wait 4 days following treatment if forage is to be cut for hay. Notes: (1) Diazinon will not control organophosphate-resistant leafminers. (2) To protect bees, do not apply foliarly if the crop or weeds in the treatment area are in bloom Make cucumber beetle application in 100 gals of water per acre.
Beans, Lima (succulent only)	Leafhoppers, Spider Mites	1 pt. per acre	Apply as pests occur. Repeat application, as necessary, every 5 days. Do not make more than 3 applications per season. Do not apply within 7 days of harvest or illegal residues may occur. Bean forage or bean hay may be fed to dairy and beef cattle and sheep. Wait 4 days following treatment if forage is to be cut for hay. Note: To protect bees, do not apply foliarly if the crop or weeds in the treatment area are in bloom.
Beets, Red (Table)	Cutworms	2-4 qts. per acre	Broadcast just before planting and immediately incorporate into the soil. (See Soil Incorporation Note.)
	Mole Crickets	1 qt. per acre	Apply to plant beds or fields 1-2 days before sowing of seed or transplanting and immediately incorporate into the top 1-2 inches of soil.
	Wireworms	3-4 qts. per acre	Broadcast just before planting and immediately incorporate into the top 4-8 inches of soil.

	Dipterous Leafminers	1/2-1 pt. per acre	Apply as insects occur. Repeat application, as necessary, every 7 days. Do not make more than 5 applications per season. Do not apply within 14 days of harvest, or illegal residues may occur. Note: Diazinon will not control organophosphate-resistant leafminers.
Broccoli	Root Maggot:	2-3 qts. per acre	Apply to plant beds or fields just before sowing of seed or transplanting and immediately incorporate into the top 3-4 inches of soil.



Crop	Pest	Rate	Timing/Special Directions
Broccoli (continued)	Root Maggots (continued)	4-8 oz. per 50 gals. of water	In transplant water as a drench application when 200-300 gals. of water are used per acre. Apply 1/2-1 cup (4 to 8 oz.) per plant by hand or by tractor mounted sprayer equipped with drop nozzles to direct spray to the base of the plant. Note: Transplant water treatments may result in stand reduction due to plant stress at time of transplanting.
	Cutworms	2-4 qts. per acre	Broadcast just before planting and immediately incorporate into the soil. (See Soil Incorporation Note.)
	Mole Crickets	1 qt. per acre	Apply to plant beds or fields 1-2 days before sowing of seed or transplanting and immediately incorporate into the top 1-2 inches of soil.
	Wireworms	3-4 qts. per acre	Broadcast just before planting and immediately incorporate into the top 4-8 inches of soil.
	Aphids, Diamondback Moths, Imported Cabbageworm, Dipterous Leafminers	1/2-1 pt. per acre	Apply as insects occur. Repeat application, as necessary, every 7 days. Do not make more than 5 applications per season. Do not apply within 7 days of harvest or illegal residues may occur. Note: Diazinon will not control organophosphate-resistant leafminers.
Brussels Sprouts	Root Maggots	2-3 qts. per acre	Apply to plant beds or fields just before sowing of seed or transplanting and immediately incorporate into the top 3-4 inches of soil.
		4-8 oz. in 50 gals. of water	In transplant water as a drench application when 200-300 gals. of water are used per acre. Apply 1/2-1 cup (4 to 8 oz.) per plant by hand or by tractor-mounted sprayer equipped with drop nozzles to direct spray to the base of the plant. Note: Transplant water treatments may result in stand reduction due to plant stress at time of transplanting.
	Cutworms	2-4 qts. per acre	Broadcast just before planting and immediately incorporate into the soil. (See Soil Incorporation Note.)
	Mole Crickets	1 qt. per acre	Apply to plant beds or fields 1-2 days before sowing of seed or transplanting and immediately incorporate into the top 1-2 inches of soil.

Crop	Pest	Rate	Timing/Special Directions
Brussels Sprouts (continued)	Wireworms	3-4 qts. per acre	Broadcast just before planting and immediately incorporate into the top 4-8 inches of soil.
	Aphids, Diamondback Moths, Imported Cabbageworm, Dipterous Leafminers	1/2 1 pt. per acre	Apply as insects occur. Repeat application, as necessary, every 7 days. Do not make more than 5 applications per season. Do not apply within 21 days of harvest, or illegal residues may occur. Note: Diazinon will not control organophosphate-resistant leafminers.
Carrots	Cutworms	2-4 qts. per acre	Broadcast just before planting and immediately incorporate into the soil. (See Soil Incorporation Note.)
	Mole Crickets	1 qt. per acre	Apply to plant beds or fields 1-2 days before sowing of seed or transplanting and immediately incorporate into the top 1-2 inches of soil.
	Wireworms	3-4 qts. per acre	Broadcast just before planting and immediately incorporate into the top 4-8 inches of soil.
	Aphids	1 pt. per acre	Apply as insects occur. Repeat application, as necessary, every 7 days. Do not make more than 5 applications per season. Do not apply within 14 days of harvest, or illegal residues may occur.
Cauliflower	Root Maggots	2-3 qts. per acre	Apply to plant beds or fields just before sowing of seed or transplanting and immediately incorporate into the top 3-4 inches of soil.
		4-8 oz. in 50 gals. of water	In transplant water as a drench application when 200-300 gals. of water are used per acre. Apply 1/2-1 cup (4 to 8 oz.) per plant by hand or by tractor-mounted sprayer equipped with drop nozzles to direct spray to the base of the plant. Note: Transplant water treatments may result in stand reduction due to plant stress at time of transplanting.
	Cutworms	2-4 qts. per acre	Broadcast just before planting and immediately incorporate into the soil. (See Soil Incorporation Note.)
	Mole Crickets	1 qt. per acre	Apply to plant beds or fields 1-2 days before sowing of seed or transplanting and immediately incorporate into the top 1-2 inches of soil.
	Wireworms	3-4 qts. per acre	Broadcast just before planting and immediately incorporate into the top 4-8 inches of soil.
	Aphids, Diamondback Moths, Imported Cabbageworm, Dipterous Leafminers	1/2-1 pt. per acre	Apply as insects occur. Repeat application, as necessary, up to 5 times, with a minimum of 7 days between applications. Do not apply within 5 days of harvest, or illegal residues may occur. Note: Diazinon will not control organophosphate-resistant leafminers.

Crop	Pest	Rate	Timing/Special Directions
Chinese Broccoli	Aphids, Diamondback Moths, Imported Cabbageworm, Dipterous Leafminers	1/2-1 pt. per acre.	Apply as insects occur. Repeat application, as necessary, every 7 days. Do not make more than 5 applications per season. Do not apply within 10 days of harvest, or illegal residues may occur. Note: Diazinon will not control organophosphate-resistant leafminers.
Chinese Cabbage (Bok Choy and Napa)	Aphids, Diamondback Moths, Imported Cabbageworm, Dipterous Leafminers	1/2-1 pt. per acre.	Apply as insects occur. Repeat application, as necessary, every 7 days. Do not make more than 5 applications per season. Do not apply within 10 days of harvest, or illegal residues may occur. Note: Diazinon will not control organophosphate-resistant leafminers.
Chinese Mustard (Gai Choy)	Aphids, Diamondback Moths, Imported Cabbageworm, Dipterous Leafminers	1/2-1 pt. per acre.	Apply as insects occur. Repeat application, as necessary, every 7 days. Do not make more than 5 applications per season. Do not apply within 10 days of harvest, or illegal residues may occur. Note: Diazinon will not control organophosphate-resistant leafminers.
Chinese Radish (Japanese Radish or Daikon) (FL and CA only)	Aphids, Diamondback Moths, Imported Cabbageworm, Dipterous Leafminers	1 pt. per acre.	Mix in a minimum of 100 gals. of water per acre and apply as a foliar spray as pests occur. Repeat application, as necessary, every 14 days. Do not make more than 3 applications per season. Do not apply within 14 days of harvest, or illegal residues may occur. Note: Diazinon will not control organophosphate-resistant leafminers.
Collards	Cutworms	2-4 qts. per acre	Broadcast just before planting and immediately incorporate into the soil. (See Soil Incorporation Note.)
	Mole Crickets	1 qt. per acre	Apply to plant beds or fields 1-2 days before sowing of seed or transplanting and immediately incorporate into the top 1-2 inches of soil.
	Wireworms	3-4qts. per acre	Broadcast just before planting and immediately incorporate into the top 4-8 inches of soil.
<i>Chinese Cabbage</i>	Aphids, Diamondback Moths, Imported Cabbageworm, Harlequin bugs, Corn Earworms	1/2 -1 pt. per acre.	Apply as insects occur. Repeat application, as necessary, every 7 days. Do not make more than 5 applications per season. Do not apply within 10 days of harvest, or illegal residues may occur.
Cucumbers	Cutworms	2-4 qts. per acre	Broadcast just before planting and immediately incorporate into the soil. (See Soil Incorporation Note)
	Wireworms	3-4 qts. per acre	Broadcast just before planting and immediately incorporate into the top 4-8 inches of soil.

Crop	Pest	Rate	Timing/Special Directions
Cucumbers (continued)	Aphids, Serpentine Leafminers, Thrips, Striped Cucumber Beetles, Melonworms	1 pt. per acre.	Apply as insects occur. Repeat application, as necessary, every 7 days. Do not make more than 3 applications per season. Do not apply within 7 days of harvest, or illegal residues may occur. Note: Diazinon will not control organophosphate-resistant leafminers.
Endive (Escarole)	Cutworms	2-4 qts. per acre	Broadcast just before planting and immediately incorporate into the soil. (See Soil Incorporation Note.)
	Mole Crickets	1 qt. per acre	Apply to plant beds or fields 1-2 days before sowing of seed or transplanting and immediately incorporate into the top 1-2 inches of soil.
	Wireworms	3-4 qts. per acre	Broadcast just before planting and immediately incorporate into the top 4-8 inches of soil.
	Aphids, Dipterous Leafminers	1/2-1 pt. per acre.	Apply as insects occur. Repeat application, as necessary, every 7 days. Do not make more than 5 applications per season. Do not apply within 14 days of harvest. Note: Diazinon will not control organophosphate-resistant leafminers.
Ginseng	Leafhoppers, Aphids, Lygus Bugs, Flea Beetles, Jumping Plant Lice	3/4-1 pt. per acre	Spray when insects first appear. For heavy insect infestations, use 1 pt. per acre. Apply by ground equipment using 10 to 100 gals. of water per acre. Do not apply more than one application per growing season. Do not apply during flowering of three or four year old crops. Do not apply within 30 days of harvest. Do not graze treated areas or feed treated forage to livestock.
Kale	Cutworms	2-4 qts. per acre	Broadcast just before planting and immediately incorporate into the soil. (See Soil Incorporation Note.)
	Mole Crickets	1 qt. per acre	Apply to plant beds or fields 1-2 days before sowing of seed or transplanting and immediately incorporate into the top 1-2 inches of soil.
	Wireworms	3-4 qts. per acre	Broadcast just before planting and immediately incorporate into the top 4-8 inches of soil.
	Aphids, Diamondback Moths, Imported Cabbageworm, Harlequin bugs, Corn Earworms	1/2-1 pt. per acre	Apply as insects occur. Repeat application, as necessary, every 7 days. Do not make more than 5 applications per season. Do not apply within 14 days of harvest or illegal residues may occur.
Lettuce	Cutworms	2-4 qts. per acre	Broadcast just before planting and immediately incorporate into the soil. (See Soil Incorporation Note.)

Crop	Pest	Rate	Timing/Special Directions
Lettuce (continued)	Mole Crickets	1 qt. per acre	Apply to plant beds or fields 1-2 days before sowing of seed or transplanting and immediately incorporate into the top 1-2 inches of soil.
	Wireworms	3-4 qts. per acre	Broadcast just before planting and immediately incorporate into the top 4-8 inches of soil.
	Aphids, Dipterous Leafminers	1/2-1 pt. per acre	Apply as insects occur. Repeat application, as necessary, every 7 days. Do not make more than 5 applications per season. Do not apply within 14 days of harvest, or illegal residues may occur. Note: Diazinon will not control organophosphate-resistant leafminers.
Melons (Cantaloupes, Casabas, Crenshaws, Honeydews, Muskmelons, Persians, and Hybrids of these) and Watermelons	Cutworms	2-4 qts. per acre	Broadcast just before planting and immediately incorporate into the soil. (See Soil Incorporation Note.)
	Wireworms	3-4 qts. per acre	Broadcast just before planting and immediately incorporate into the soil. (See Soil Incorporation Note.)
	Aphids, Dipterous Leafminers, Thrips, Striped Cucumber Beetles, Melonworms, Leafhoppers, Spider Mites	1/2-1 1/2 pts. per acre	Apply as insects occur. Repeat application, as necessary, every 7 days. Do not make more than 5 applications per season. Do not apply within 3 days of harvest, or illegal residues may occur. Note: Diazinon will not control organophosphate-resistant leafminers.
Mustard	Cutworms	2-4 qts. per acre	Broadcast just before planting and immediately incorporate into the soil. (See Soil Incorporation Note.)
	Mole Crickets	1 qt. per acre	Apply to plant beds or fields 1-2 days before sowing of seed or transplanting and immediately incorporate into the top 1-2 inches of soil.
	Wireworms	3-4 qts. per acre	Broadcast just before planting and immediately incorporate into the top 4-8 inches of soil.
	Aphids, Dipterous Leafminers, Diamondback Moths, Imported Cabbageworm	1/2-1 pt. per acre	Apply as insects occur. Repeat application, as necessary, every 7 days. Do not make more than 5 applications per season. Do not apply within 10 days of harvest, or illegal residues may occur. Note: Diazinon will not control organophosphate-resistant leafminers.

Crop	Pest	Rate	Timing/Special Directions
------	------	------	---------------------------

Onion (Bulb and Green)	Onion Maggots	2-4 qts. per acre	Broadcast just before planting and mix into the top 3-4 inches of soil. Note: Diazinon will not control organophosphate-resistant onion maggots.
	Onion Thrips	1 pt. per acre	Apply as thrips appear. Repeat application, as necessary, every 7 days. Do not make more than 3 applications per season. Do not apply within 14 days of harvest, or illegal residues may occur.
	Wireworms	3-4 qts. per acre	Broadcast just before planting and immediately incorporate into the top 4-8 inches of soil.
Parsley	Cutworms	2-4 qts. per acre	Broadcast just before planting and immediately incorporate into the soil. (See Soil Incorporation Note.)
	Wireworms	3-4 qts. per acre	Broadcast just before planting and immediately incorporate into the top 4-8 inches of soil.
Parsnips	Aphids, Flea Beetles, Dipterous Leafminers	1/2-1 pt. per acre	Apply as insects appear. Repeat application, as necessary, every 7 days. Do not make more than 5 applications per season. Do not apply within 14 days of harvest, or illegal residues may occur. Note: Diazinon will not control organophosphate-resistant leafminers.
Peas (succulent only)	Cutworms	2-4 qts. per acre	Broadcast just before planting and immediately incorporate into the soil. (See Soil Incorporation Note.)
	Wireworms	3-4 qts. per acre	Broadcast just before planting and immediately incorporate into the top 4-8 inches of soil.
	Aphids, Dipterous Leafminers	3/4-1 pt. per acre	Apply as insects appear. Repeat application, as necessary, every 5 days. Do not make more than 3 applications per season. To avoid illegal residues, allow a minimum of 7 days between the last application and harvest. Vines and hay may be fed to dairy and beef cattle and sheep. To avoid illegal residues, wait 7 days following treatment if forage is to be cut for hay. Notes: (1) Diazinon will not control organophosphate-resistant leafminers. (2) To protect bees, do not apply foliarly if the crop or weeds in the treatment area are in bloom.
Peppers	Cutworms	2-4 qts. per acre	Broadcast just before planting and immediately incorporate into the soil. (See Soil Incorporation Note.)
	Mole Crickets	1 qt. per acre	Apply to plant beds or fields 1-2 days before sowing of seed or transplanting and immediately incorporate into the top 1-2 inches of soil.
	Wireworms	3-4 qts. per acre	Broadcast just before planting and immediately incorporate into the top 4-8 inches of soil.

Crop	Pest	Rate	Timing/Special Directions
Peppers (continued)	Aphids, Serpentine Leafminers	1/2-1 pt. per acre	Apply as insects appear. Repeat application, as necessary, every 7 days. Do not make more than 3 applications per season. Do not apply within 5 days of harvest, or illegal residues may occur. Note: Diazinon will not control organophosphate-resistant leafminers.
Potatoes	Cutworms (Surface and Subterranean)	2-4 qts. per acre	Broadcast just before planting and immediately incorporate into the soil. (See Soil Incorporation Note.)
	Wireworms	3-4 qts. per acre	Broadcast just before planting and immediately incorporate into the top 4-8 inches of soil.
	Southern Potato Wireworms (Southeastern US)	2-4 qts. per acre	For potatoes grown on mineral soils in the Southeast, apply before planting and immediately incorporate into the top 3-6 inches of soil depending on location of wireworms.
	Aphids, Flea Beetles, Colorado Potato Beetles, Dipterous Leafminers	1/2-3/4 pt. per acre	Apply as insects appear. Repeat application, as necessary, every 7 days. Do not make more than 5 applications per season. Do not apply within 35 days of harvest, or illegal residues may occur. Note: Diazinon will not control organophosphate-resistant leafminers.
	Banded Cucumber Beetles, Leafhoppers, Southern Armyworms	3/4-1 pt. per acre	Apply as insects appear. Repeat application, as necessary, every 7 days. Do not make more than 5 applications per season. Do not apply within 35 days of harvest, or illegal residues may occur.

Note: Do not use on commercially grown potatoes which will be hand-harvested.

Radishes	Cutworms	2-4 qts. per acre	Broadcast just before planting and immediately incorporate into the soil. (See Soil Incorporation Note.)
	Mole Crickets	1 qt. per acre	Apply to plant beds or fields 1-2 days before sowing of seed or transplanting and immediately incorporate into the top 1-2 inches of soil.
	Wireworms	3-4 qts. per acre	Broadcast just before planting and immediately incorporate into the top 4-8 inches of soil.
	Aphids, Flea Beetles, Dipterous Leafminers	1/2-1 pt. per acre	Apply as insects appear. Repeat application, as necessary, every 7 days. Do not make more than 3 applications per season. Do not apply within 14 days of harvest, or illegal residues may occur. Note: Diazinon will not control organophosphate-resistant leafminers.
Spinach	Cutworms	2-4 qts. per acre	Broadcast just before planting and immediately incorporate into the soil. (See Soil Incorporation Note.)

Crop	Pest	Rate	Timing/Special Directions
Spinach (continued)	Wireworms	3-4 qts. per acre	Broadcast just before planting and immediately incorporate into the top 4-8 inches of soil.
	Aphids, Dipterous Leafminers	1/2-1 pt. per acre	Apply as insects appear. Repeat application, as necessary, every 7 days. Do not make more than 5 applications per season. Do not apply within 14 days of harvest, or illegal residues may occur. Note: Diazinon will not control organophosphate-resistant leafminers.
Squash, Summer	Cutworms	2-4 qts. per acre	Broadcast just before planting and immediately incorporate into the soil. (See Soil Incorporation Note.)
	Wireworms	3-4 qts. per acre	Broadcast just before planting and immediately incorporate into the top 4-8 inches of soil.
	Aphids, Serpentine Leafminers, Thrips, Striped Cucumber Beetles, Melonworms, Leafhoppers, Spider Mites	1/2-1 1/2 pts. per acre	Apply as insects appear. Repeat application, as necessary, every 7 days. Do not make more than 5 applications per season. Do not apply within 7 days of harvest, or illegal residues may occur. Note: Diazinon will not control organophosphate-resistant leafminers.
Squash, Winter	Cutworms	2-4 qts. per acre	Broadcast just before planting and immediately incorporate into the soil. (See Soil Incorporation Note.)
	Wireworms	3-4 qts. per acre	Broadcast just before planting and immediately incorporate into the top 4-8 inches of soil.
	Aphids, Serpentine Leafminers, Thrips, Striped Cucumber Beetles, Melonworms, Leafhoppers, Spider Mites	1/2-1 1/2 pts. per acre	Apply as insects appear. Repeat application, as necessary, every 7 days. Do not make more than 5 applications per season. Do not apply within 3 days of harvest, or illegal residues may occur. Note: Diazinon will not control organophosphate-resistant leafminers.
Sweet Corn	Cutworms	2-4 qts. per acre	Broadcast just before planting and immediately incorporate into the soil. (See Soil Incorporation Note.)
	Seed Corn Maggots	2-4 qts. per acre	Broadcast just before planting and immediately incorporate into the top 2 inches of soil.
	Wireworms	3-4 qts. per acre	Broadcast before planting and immediately incorporate into the top 4-8 inches of soil.
	Corn Earworms	1-1 1/4 qts. per acre	Apply when silks first appear. Repeat application every 7 days if necessary. Do not make more than 5 applications per season.



Crop	Pest	Rate	Timing/Special Directions
Sweet Corn (continued)	Corn Rootworm (Adults)	1/2-1 pt. per acre	Apply as insects first appear. Repeat application, as necessary, every 7 days. Do not make more than 5 applications per season.
	Corn Leaf Aphids	1-2 pts. per acre	Apply in sufficient water to provide complete coverage to the upper portions of the plants. Repeat application, as necessary, every 7 days. Do not make more than 5 applications per season.
	Grasshoppers, Spider Mites, Flea Beetles	1 pt. per acre	Apply as insects occur. Repeat application, as necessary, every 7 days. Do not make more than 5 applications per season.
	Sap Beetles	2-2 1/2 pts. per acre	Consult local agricultural authorities for proper timing of sprays. Repeat application, as necessary, every 7 days. Do not make more than 5 applications per season.

Notes: (1) To protect bees, do not apply foliarly to corn during the pollen shed period. (2) Allow 7 days after the last application before grazing or cutting for forage. Forage may be fed to beef and dairy cattle and sheep. (3) Corn may be picked 7 days after the last application.

Sweet Potatoes	Wireworms, Flea Beetles	3-4 qts. per acre	Broadcast just before planting and immediately incorporate into the top 4-8 inches of soil.
Swiss Chard	Cutworms	2-4 qts. per acre	Broadcast just before planting and immediately incorporate into the soil. (See Soil Incorporation Note.)
	Wireworms	3-4 qts. per acre	Broadcast just before planting and immediately incorporate into the top 4-8 inches of soil.
	Aphids, Imported Cabbageworm, Diamondback Moths, Harlequin Bugs	1/2-1 pt. per acre	Apply as insects occur. Repeat application, as necessary, every 7 days. Do not make more than 5 applications per season. Do not apply within 14 days of harvest or illegal residues may occur.
Tomatoes	Cutworms	2-4 qts. per acre	Broadcast just before planting and immediately incorporate into the soil. (See Soil Incorporation Note.)
	Mole Crickets	1 qt. per acre	Apply to plant beds or fields 1-2 days before sowing of seed or transplanting and immediately incorporate into the top 1-2 inches of soil.
	Wireworms	3-4 qts. per acre	Broadcast just before planting and immediately incorporate into the top 4-8 inches of soil.
	Aphids, Dipterous Leafminers	1/2 pt. per acre	Apply as insects appear. Repeat application, as necessary, every 7 days. Do not make more than 5 applications per season. Do not apply within one day of harvest, or illegal residues may occur. Note: Diazinon will not control organophosphate-resistant leafminers.

Crop	Pest	Rate	Timing/Special Directions
Tomatoes (continued)	Banded Cucumber Beetles, Fall Armyworms, Southern Armyworms, Beet Armyworm	3/4-1 pt. per acre	Apply as insects appear. Repeat application, as necessary, every 7 days. Do not make more than 5 applications per season. Do not apply within one day of harvest, or illegal residues may occur.
	Vinegar Flies (Drosophila spp.)	1/2-1 1/2 pts. per acre	Apply as insects appear. Repeat application, as necessary, every 7 days. Do not make more than 5 applications per season. Do not apply within one day of harvest, or illegal residues may occur.
Turnips, Roots and Tops	Cutworms	2-4 qts. per acre	Broadcast just before planting and immediately incorporate into the soil. (See Soil Incorporation Note.)
	Mole Crickets	1 qt. per acre	Apply to plant beds or fields 1-2 days before sowing of seed or transplanting and immediately incorporate into the top 1-2 inches of soil.
	Wireworms	3-4 qts. per acre	Broadcast just before planting and immediately incorporate into the top 4-8 inches of soil.
	Aphids, Flea Beetles, Dipterous Leafminers	1/2-1 pt. per acre	Apply as insects appear. Repeat application, as necessary, every 7 days. Do not make more than 5 applications per season. Do not apply within 14 days of harvest, or illegal residues may occur. Note: Diazinon will not control organophosphate-resistant leafminers.

### Field Crops

Soil and foliar applications of Diazinon Insecticide should always be applied as a spray in sufficient water to ensure thorough coverage. For foliar applications, observe stated time intervals between last application and harvest, as well as intervals between applications and total number of applications that can be made per season.

#### Pre-Harvest Interval (PHI\*) For Foliar Applications

Crop	PHI*
Hops	14
Sugar Beets	14

\*PHI = Pre-Harvest Interval or the number of days between the last application and harvest.

Crop	Pest	Rate	Timing/Special Directions
Hops	Aphids, Spider Mites	1 qt. per acre	Apply as pests occur. Repeat application, as necessary, every 14 days. Do not make more than 4 applications per season. Do not apply within 14 days of harvest.
Sugar Beets	Wireworms	3-4 qts. per acre	Broadcast just before planting. Incorporate into the soil 4-6 inches. Do not apply more than 4 qts. of this product to the soil per season.

Crop	Pest	Rate	Timing/Special Directions
Sugar Beets (continued)	Beet Leafhoppers, Dipterous Leafminers, Aphids	3 4-1 pt. per acre	Apply as insects occur. Repeat application, as necessary, every 7 days. Do not make more than 5 applications per season. Do not apply within 14 days of harvest. Note: Diazinon will not control organophosphate-resistant leafminers.
	Grasshoppers	1 pt. per acre	Apply as insects occur. Repeat application, as necessary, every 7 days. Do not make more than 5 applications per season. Do not apply within 14 days of harvest.

Note: Tops may be fed to beef and dairy animals.

### Grassland Insects

#### Ditch Banks, Roadsides, Wasteland, Noncrop Areas, Barrier Strips

Grasshoppers: Spray 3/4-1 pt. per acre in water (minimum of 1 gal. of water per acre) for aerial applications or a minimum of 5 gals. of water per acre for ground applications or in oil (a minimum of 1 gal. of oil per acre) when insects first appear, preferably in the nymphal stage. Thorough coverage of the foliage is essential.

Do not graze or use treated grass for forage or feed.

### Insect Control on Ornamentals

To control certain insects on Arborvitae, Azalea, Birch, Boxwood, Camellia, Carnation, Chrysanthemum, Douglas Fir, Elm, Gladioli, Hawthorn, Holly, Juniper, Lilac, Locust, Maple, Oak, Pine, Ornamental Plum, Poplar, Rhododendron, Rose, Spruce and Willow, apply the recommended rates indicated below. Try to spray underside of leaves and penetrate dense foliage.

Insects	Amount of Diazinon Insecticide to Use	
	Rate Per 3 Gals. Water	Rate Per 100 Gals. Water
Aphids, Bagworms, Carnation Bud Mites, Carnation Shoot Mites, Clover Mites, Cyclamen Mites, Dipterous Leafminers, European Pine Shoot Moths, European Red Mites, Flea Beetles, Holly Bud Moths, Leafhoppers, Obscure Root Weevils, Omnivorous Leafhoppers, Privet Mites, Scale Crawlers (Cottoncushion, Lecanium, Pine Needle, San Jose, Soft), Thrips, Two-spotted Spider Mites, Juniper Webworms, Whiteflies	1/2 fl. oz.*	1 pt.**
Apple-and-Thorn Skeletonizers, Cotonest Webworms, Fall Webworms, Hemlock Chermes, Oak Loopers, Obliquebanded Leafrollers, Pear Slugs, Tent Caterpillars	1 1/2 fl. oz.*	3 pts. **

\*1 fl. oz. = 2 tablespoons

\*\* 16 fl. oz. = 1 pint

**Precaution:** Do not use on Ferns, Poinsettia, Hibiscus, Papaya, Pilea, and Gardenia, since injury to the plants may occur.

Mimosa Webworms: Mix 1/2 fl. oz. in 3 gals. of water (or 1 pt. in 100 gals. of water) and apply as a thorough foliar spray when adults first appear. Make a second and third application at 4-5 week intervals.

### Lawn Pest Control (Excluding Golf Courses and Sod Farms)

**Precautions:** Birds, especially waterfowl, feeding or drinking on treated areas may be killed. Apply this product only as specified on this label. Because of the migratory habits of certain waterfowl, do not apply in Nassau County, New York between November 1 and May 20. Do not exceed maximum permitted label rates, since rates above those recommended significantly increase potential hazards to birds, especially waterfowl. Avoid overlapping sprays. If waterfowl, i.e., ducks or geese, can be expected to enter the treated areas after treatment (except spot treatments), water lawn with at least 1/4 inch water immediately after application, however, stop watering before puddling occurs.

Pest	Rate/1000 sq. ft.		Remarks
	Diazinon Insecticide	Water	
Lawn Chinch Bugs	2-3 fl. oz.	3 gals.	Use higher rate for longer residual control and in lawns of dense growth such as St. Augustine lawns.
Ants, Armyworms, Bermudagrass Mites, Clover mites, Crickets, Cutworms, Digger Wasps, Earwigs, Frit Flies, Lawn Billbugs, Leafhoppers, Sod Webworms (Lawn Moths), Sowbugs (Pillbugs), Springtails (Collembola)	2-3 fl. oz.	3 gals.	Spot spray ant hills and wasp ground nest openings. For digger wasps, apply at dusk when wasps are not active. For frit flies, mow grass and water well before treatment, but delay application until grass is dry. For billbug control, apply when activity is first observed or when chewed or brown grass is present, indicating damage from this insect.
Brown Dog Ticks, Chiggers, Fleas	3 fl. oz.	3 gals.	Note: Do not apply to animals. For brown dog ticks, spray grass and under shrubbery, particularly near house.
Hyperodes Weevils	3 fl. oz.	3 gals.	Treat problem areas in mid-April and again in mid-May
Millipedes	3 fl. oz.	3 gals.	
Rhodesgrass Scales	3 fl. oz.	3 gals.	Apply when crawlers first emerge.
White Grubs (Such as Japanese Beetle Larvae, European Chafer, Southern Chafer)	3 fl. oz.	3 gals.	Apply any time between late July and early October.

#### Nuisance Pests in Outside Areas

Ants, Boxelder Bugs, Brown Dog Ticks, Chiggers, Clover Mites, Cockroaches, Crickets, Earwigs, Fleas, Flies, Millipedes, Sowbugs (Pillbugs), Spiders, Springtails (Collembola)

Mix 3 fl. oz. in 3 gals. of water and thoroughly spray window and door screens, sills, foundations, porch and patio walls, entranceways, walks, garbage cans, tree trunks, and into cracks and other places where insects can hide. To prevent entry into houses, spray a five-foot band of soil around the house next to the foundation and spray the foundation of the house to a height of 2-3 feet. Repeat application as necessary. **Do not apply to animals. Do not treat plants (other than tree trunks) at this nuisance pests rate.**

### **Storage and Disposal**

Do not contaminate water, food, or feed by storage or disposal. Open dumping is prohibited.

#### **Pesticide**

Pesticide wastes are toxic. Improper disposal of excess pesticide, spray mixture, or rinsate is a violation of federal law. If pesticide, spray mixture or rinsate cannot be disposed of by use according to label instructions, contact your State Pesticide or Environmental Control Agency, or the Hazardous Waste representative at the nearest EPA Regional Office for guidance.

#### **Container**

Tripel rinse (or equivalent). Then puncture and dispose of in a sanitary landfill, or incinerate, or burn, if allowed by state and local authorities. Stay out of smoke from burning container.

For minor spills, leaks, etc., follow all precautions indicated on this label and clean up immediately. Take special care to avoid contamination of equipment and facilities during cleanup and disposal of wastes. In the event of a major spill, fire or other emergency, call 1-800-888-3272 day or night.

### **WARRANTY - CONDITION OF SALE**

OUR RECOMMENDATIONS FOR USE of this product are based upon tests believed reliable. Follow directions carefully. Timing and method of application, weather and crop conditions, mixtures with other chemicals not specifically recommended, and other influencing factors in the use of this product are beyond the control of the Seller. Buyer assumes all risks of use, storage and handling of this material not in strict accordance with directions given herewith.

In no case shall Drexel of the Seller be liable for consequential, special or indirect damages resulting from the use or handling of this product when such use and/or handling is not in strict accordance with directions given herewith. The foregoing is a condition of sale by Drexel Chemical Company and is accepted as such by the Buyer.

## UNITED STATES ENVIRONMENTAL PROTECTION AGENCY

JUL 13 1994

Ms. Barbara Brown  
Drexel Chemical Company  
P. O. Box 9306  
2487 Pennsylvania Street  
Memphis, TN 38109

Dear Ms. Brown:

Subject: Amendment- Revise per Diazinon Registration Standard  
Drexel Diazinon Insecticide  
EPA Registration Number 19713-91  
Your submission dated June 2, 1994

This amendment referred to above, submitted in connection with registration under FIFRA section 3(c)(7)(a), is acceptable, provided that you:

1. Submit and/or cite all data or other material required for registration/reregistration of your product under FIFRA section 3(c)(5) or FIFRA section 4 when the Agency requires all registrants of similar products to submit such data.

2. Make the labeling changes listed below before you release the product for shipment bearing the amended labeling:

a. Your Confidential Statement of Formula (CSF) dated May 20, 1994 has been reviewed and will be acceptable provided you list the impurity levels of toxicological concern for diazinon as required under the 1988 Guidance Document for Reregistration of Pesticide Products containing diazinon (see page 149 of the document). See the Agency's letter of July 8, 1994 regarding your technical product EPA Registration Number 19713-104 for more information in this regard.

In addition the CSF dated May 20, 1994 must be revised so that it coincides with the label claim. You cannot have a lower certified limit of 53.3% when your label claim is

48.2%. Refer to CFR 40 c600.158.175 for information calculating certified limits.

SYMBOL	H.2.5.55						
SURNAME	1.1.1						
DATE	7/11/94						

b. Delete your **PERSONAL PROTECTIVE EQUIPMENT** section.

c. Replace the **AGRICULTURAL USE REQUIREMENTS** section with "Use this product in accordance with its labeling and with the Worker Protection Standard, 40 CFR part 170. This Standard contains requirements for the protection of agricultural workers on farms, forests, nurseries, and greenhouses, and handlers of agricultural pesticides. It contains requirements for training, decontamination, notification, and emergency assistance. It also contains specific instructions and exceptions pertaining to statements on this label about personal protective equipment (PPE), and restricted- entry interval. The requirements in this box only apply to uses of this product that are covered by the Worker Protection Standard. **Do not enter or allow worker entry into treated areas during the restricted entry interval.** Exception: If the product is soil- injected or soil incorporated, the Worker Protection Standard, under certain circumstances, allows workers to enter the treated area if there will be no contact with anything that has been treated. PPE required for early entry into treated areas that is permitted under the Worker Protection Standard and that involves contact with anything that has been treated, such as plants, soil, or water, is: coveralls, chemical resistant gloves such as barrier laminate, butyl rubber greater than or equal to 14 mils, nitrile rubber greater than or equal to 14 mils, or Viton greater than or equal to 14 mils, and shoes plus socks."

d. Replace the **NON-AGRICULTURAL USE REQUIREMENTS** section with "The requirements in this box apply to use of this product that are NOT within the scope of the Worker Protection Standard for agricultural pesticides (40CFR Part 170). The WPS applies when this product is used to produce agricultural plants on farms, forests, nurseries, or greenhouses. **Do not permit children or pets to go onto treated areas until sprays have dried.**

e. After the **NON-AGRICULTURAL USE REQUIREMENTS** section add "Note: The California Department of Agriculture has set a 3-day reentry period for diazinon on grapes, peaches, and nectarines. Five days should elapse between the time of application and the time a worker may enter the field to engage in any activity requiring substantial contact with treated foliage. When a mixture of 2 or more organophosphate pesticides are applied in combination, the interval should be prolonged by adding to the largest applicable interval an additional 50% of that interval."

f. Under **FRUIT AND NUT CROPS** add "**REI=24 HOURS**".

g. Under **VEGETABLE CROPS** add "**REI=24 HOURS**".

3y 31  
8

h. Under FIELD CROPS add "REI=24 HOURS".

i. Under INSECT CONTROL on ORNAMENTALS add "REI=12 HOURS".

3. Submit three (3) copies of your final printed labeling before you release the product for shipment. Refer to the A-79 enclosure for a further description of final printed labeling.

If these conditions are not complied with, the registration will be subject to cancellation in accordance with FIFRA section 6(e). Your release for shipment of the product constitutes acceptance of these conditions.

A stamped copy of the label is enclosed for your records.

Sincerely,

George T. LaRocca  
Product Manager (13)  
Insecticide-Rodenticide Branch  
Registration Division (H7505C)

Enclosure



4931

**RESTRICTED USE PESTICIDE**

**DUE TO AVIAN AND AQUATIC TOXICITY**

**FOR RETAIL SALE TO AND USE BY CERTIFIED APPLICATORS OR PERSONS UNDER THEIR DIRECT SUPERVISION AND ONLY FOR THOSE USES COVERED BY THE CERTIFIED APPLICATOR'S CERTIFICATION**

**DREXEL  
DIAZINON INSECTICIDE**

For control of certain insects on fruits, nuts, vegetables, field crops, lawns and ornamentals

This product must not be used on golf courses and sod farms.

**ACTIVE INGREDIENT:**

O,O-Diethyl O-(2-isopropyl-6-methyl-4-pyrimidinyl) phosphorothioate.....48.2%

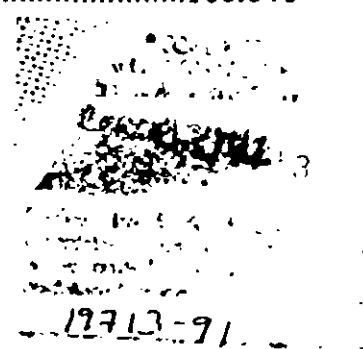
**INERT INGREDIENTS:**.....51.8%

**TOTAL:**.....100.0%

\*Contains xylene range aromatic solvent.

EPA Reg. No. 19713-91

EPA Est. No. 19713-GA-1



**KEEP OUT OF REACH OF CHILDREN  
CAUTION**

**STATEMENT OF PRACTICAL TREATMENT**

**IF SWALLOWED:** Call a physician or Poison Control Center immediately. **DO NOT INDUCE VOMITING.**

Vomiting may cause aspiration pneumonia. Do not give anything by mouth if person is unconscious or convulsing.

**IF INHALED:** Remove victim to fresh air. If not breathing, give artificial respiration, preferably mouth-to-mouth. Get medical attention.

**IF ON SKIN:** Wash promptly with soap and water. Rinse thoroughly. Get medical attention.

**IF IN EYES:** Rinse eyes with plenty of water. Call a physician if irritation persists.

**NOTE TO PHYSICIAN:** This product is an organophosphate insecticide. If symptoms of cholinesterase inhibition are present, atropine sulfate by injection is antidotal. 2-PAM is also antidotal and may be administered, but only in conjunction with atropine. This product contains a xylene range aromatic solvent which may present an aspiration hazard. Gastric lavage may be indicated if product was taken internally. Diazinon is an organophosphate insecticide/miticide.

**BEST AVAILABLE COPY**

## PRECAUTIONARY STATEMENTS

### Hazards to Humans and Domestic Animals

Harmful if swallowed, inhaled or absorbed through skin. Causes moderate eye injury. Avoid contact with skin, eyes, or clothing. Avoid breathing vapor or spray mist. Avoid contamination of food and feed. Food utensils such as table spoons and measuring cups should not be used for food purposes after use in measuring pesticides. Keep out of reach of domestic animals. Do not use on humans, household pets or livestock. Do not contaminate ornamental fish ponds.

### PERSONAL PROTECTIVE EQUIPMENT

Applicators and other handlers who handle this pesticide for any uses covered by the Worker Protection Standard (40 CFR Part 170) - in general, agricultural plant uses are covered - must wear: Long-sleeved shirt and long pants, waterproof gloves, shoes plus socks and protective eyewear. **NON-VPS USES:** Applicators and other handlers who handle this pesticide for any uses NOT covered by the Worker Protection Standard (40 CFR Part 170) - in general, agricultural plant uses are covered - must wear: Long-sleeved shirt and long pants, waterproof gloves, shoes plus socks and protective eyewear.

Discard clothing and other absorbent materials that have been drenched or heavily contaminated with this product's concentrate. Do not reuse them. Follow manufacturer's instructions for cleaning/maintaining PPE. If no such instructions for washables, use detergent and hot water. Keep and wash PPE separately from other laundry.

## USER SAFETY RECOMMENDATIONS

Users should:

Wash hands before eating, drinking, chewing gum, using tobacco or using the toilet. Remove clothing immediately if pesticide gets inside. Then wash thoroughly and put on clean clothing.

## ENVIRONMENTAL HAZARDS

This product is highly toxic to birds, fish and other wildlife. Birds, especially waterfowl, feeding or drinking on treated areas may be killed. Because of the migratory habits of Atlantic Coast waterfowl, do not apply this product to lawns in Nassau County, New York between November 1 and May 20. Do not exceed maximum permitted label rates. Rates above those recommended significantly increase potential hazards to birds, especially waterfowl. Avoid overlapping of sprays. If waterfowl, i.e., ducks or geese, can be expected in the treated area after treatment (except spot treatment), apply at least 1/4 inch of water immediately after spraying this product, however, stop watering before puddling occurs. Keep out of lakes, streams, ponds, tidal marshes, and estuaries. Do not apply directly to water, to areas where surface water is present, or to intertidal areas below the mean high water mark. Drift and runoff may be hazardous to aquatic organism in neighboring areas. Shrimp and crab may be killed at application rates recommended on this label. Do not apply where fish, shrimp, crab, and other aquatic life are important resources. Do not contaminate water by cleaning of equipment or disposal of wash waters.

## PHYSICAL OR CHEMICAL HAZARDS

Do not use, pour, spill or store near heat or open flame.

## GENERAL INFORMATION

Diazinon Insecticide is an emulsifiable solution which, when diluted with water according to the directions, is intended for the control of insect pests of agricultural crops and other plants. Do not use on food crops grown in greenhouses. Do not use in barns or dwellings. Do not use on livestock.

In directions for use which follow, best control is obtained when application is made at first sign of pests.

Application should be repeated only as directed to maintain control.

To avoid spray drift, do not apply under windy conditions. Avoid spray overlap, since crop or plant injury may result.

## WORK SAFETY RULES

BEST AVAILABLE COPY

6931

REPEATED EXPOSURES TO CHOLINESTERASE INHIBITORS SUCH AS ARE CONTAINED IN THIS PRODUCT MAY, WITHOUT WARNING, CAUSE PROLONGED SUSCEPTIBILITY TO VERY SMALL DOSES OF ANY CHOLINESTERASE INHIBITOR.

When handling Diazinon Insecticide, do not rub eyes or mouth with hands. If you feel sick in any way, STOP work and get help right away. See Practical Treatment section of this label. When handling this product, wear the personal protective equipment listed in the following section.

### **DIRECTIONS FOR USE**

It is a violation of federal law to use this product in a manner inconsistent with its labeling. Do not apply this product in a way that will contact workers or other persons, either directly or through drift. Only protected handlers may be in the area during application. For any requirements specific to your state or tribe, consult the agency responsible for pesticide regulations.

### **AGRICULTURAL USE REQUIREMENTS**

Use this product only in accordance with its labeling and with the Worker Protection Standard, 40 CFR part 170. This Standard contains requirements for the protection of agricultural workers on farms, forests, nurseries, and greenhouses, and handlers of agricultural pesticides. It contains requirements for training, decontamination, notification, and emergency assistance. It also contains specific instructions and exceptions pertaining to the statements on this label about personal protective equipment (PPE), and restricted-entry interval. The requirements in this box only apply to uses of this product that are covered by the Worker Protection Standard. Do not enter or allow worker entry into treated areas during the restricted-entry interval (REI) of 12 hours.

**EXCEPTION:** The California Department of Agriculture has set a 5-day reentry period for diazinon on grapes, peaches, and nectarines. Five days should elapse between the time of application and the time a worker may enter the field to engage in any activity requiring substantial contact with treated foliage. When a mixture of two or more organophosphate pesticides are applied in combination, the interval should be prolonged by adding to the largest applicable interval an additional 50% of that interval. PPE required for early entry to treated areas that is permitted under the Worker Protection Standard and that involves contact with anything that has been treated, such as plants, soil, or water is: Coveralls, Waterproof gloves, Shoes plus socks and Protective eyewear.

### **NON-AGRICULTURAL USE REQUIREMENTS**

The requirements in this box apply to uses of this product that are NOT within the scope of the Worker Protection Standard for agricultural pesticides (40 CFR Part 170). The WPS Applies when this product is used to produce agricultural plants on farms, forests, nurseries, or greenhouses.

Do not use on humans, household pets or livestock. Do not permit children or pets to go onto treated areas until spray has dried.

## **CHEMIGATION**

### **APPLICATION THROUGH AN IRRIGATION SYSTEM (CHEMIGATION) - CRANBERRIES ONLY**

Diazinon Insecticide may be applied alone or in combination with other pesticides registered for application through sprinkler irrigation systems to cranberries. To insure compatibility, pour the products into a small container of water in the correct proportions. After thorough mixing, let stand for five minutes. If the combination remains mixed, or can be remixed readily, the mixture is compatible.

Do not apply this product through any type of irrigation system to other crops. For chemigation, apply this product to cranberries only through sprinkler irrigation systems. Do not apply this product to cranberries through any other type of irrigation system.

Crop injury, lack of effectiveness, or illegal pesticide residues in the crop can result from non-uniform distribution of treated water. If you have questions about calibration, you should contact State Extension Service specialists, equipment manufacturers or other experts.

Do not connect the irrigation system used for pesticide application to a public water system unless the pesticide label-prescribed safety devices for public water systems are in place. A person knowledgeable of the chemigation system and responsible for its operation, or under the supervision of the responsible person, shall shut the system down and make necessary adjustments, if the need arises.

### Chemigation System Connected to Public Water Systems

1. Public water system means a system for the provision to the public of piped water for human consumption if such system has at least 15 service connections or regularly serves an average of at least 25 individuals daily at least 60 days out of the year.
2. Chemigation systems connected to public water systems must contain a functional, reduced-pressure zone, backflow preventer (RPZ) or the functional equivalent in the water supply line upstream from the point of pesticide introduction. As an option to the RPZ, the water from the public water system should be discharged into a reservoir tank prior to pesticide introduction. There shall be a complete physical break (air gap) between the outlet end of the fill pipe and the top or overflow rim of the reservoir tank of at least twice the diameter of the fill pipe.

### Sprinkler Chemigation

1. The system must contain a functional check valve, a vacuum relief valve, and low pressure drain appropriately located on the irrigation pipeline to prevent water source contamination from backflow.
2. The pesticide injection pipeline must contain a functional, automatic, quick-closing check valve to prevent the flow of fluid back toward the injection pump.
3. The pesticide injection pipeline must also contain a functional, normally closed, solenoid-operated valve located on the intake side of the injection pump and connected to the system interlock to prevent fluid from being withdrawn from the supply tank when the irrigation system is either automatically or manually shut down.
4. The system must contain functional interlocking controls to automatically shut off the pesticide injection pump when the water pump motor stops.
5. The irrigation line or water pump must include a functional pressure switch which will stop the water pump motor when the water pressure decreases to the point where pesticide distribution is adversely affected.
6. Systems must use a metering pump, such as a positive displacement injection pump (e.g., diaphragm pump) effectively designed and constructed of materials that are compatible with pesticides and capable of being fitted with a system interlock.
7. Do not apply when wind speed favors drift beyond the area intended for treatment.

### Operating Instructions

1. Determine the acreage to be treated by the sprinkler system.
2. Measure the appropriate amount of Diazinon Insecticide needed to treat the acreage to be treated. Refer to the specific directions for use for cranberries for the application rate and the amount of water per acre.
3. Add the pre-measured Diazinon Insecticide to the chemigation system supply tank and dilute with water if needed. Proper agitation is needed if Diazinon Insecticide is tank mixed with other pesticides registered for sprinkler chemigation application to cranberries.
4. Start the irrigation system and bring the system up to full pressure, making certain that all sprinkler heads are functioning properly.
5. Engage the chemigation injection or venturi system to add the diazinon to the irrigation lines.
6. Continue to run irrigation system for a few minutes after supply tank is empty to allow material in the irrigation lines to reach the sprinkler heads furthest from the chemigation injection point.

## FRUIT AND NUT CROPS

Diazinon Insecticide may be applied using ground or aerial application equipment as specified in the following table. This table indicates the minimum amount of water that can be used for the various methods of application. The rate of Diazinon Insecticide for aerial spray or concentrated spray applied to fruit trees by ground equipment is based on a dilute full cover spray applied with conventional ground equipment at a rate of 300-400 gals. of water per acre. The specific amount of product to be used appears under the separate directions for use for each crop. If the Rate calls for 1 pt. of Diazinon Insecticide in 100 gals. of water, this amounts to 3-4 pts. of product per acre when applied at the usual dilute ground spray volumes of 300-400 gals. of water per acre. In no case should the amount of product used per acre exceed the maximum amount per acre per application that is specified in the Timing/Special Directions for individual crops.

**BEST AVAILABLE COPY**

Crop	Aerial Application Minimum Gals./Acre	Ground Application Minimum Gals./Acre	
		Dilute	Concentrate
Almonds*	20	100	20
Apricots	20	100	20
Blackberries**	20	100	20
Boysenberries**	20	100	20
Cherries	20	100	20
Cranberries	20	15	---
Dewberries**	20	100	20
Grapes	20	100	20
Loganberries**	20	200	20
Nectarines	20	200	20
Peaches	20	200	20
Plums	20	200	20
Prunes	20	200	20
Raspberries**	20	200	20
Strawberries	20	200	20
Walnuts*	20	200	20

\*CA only.

\*\*CA, OR, or WA only.

Observe stated time intervals between last application and harvest, as well as intervals between applications and total amount of product that can be applied per season.

Crop	PHI*
Almonds	**
Apricots	21
Blackberries	7
Boysenberries	7
Cherries	21
Cranberries	7
Dewberries	7
Grapes	28
Loganberries	7
Nectarines	21
Peaches	21
Plums, Prunes	21
Raspberries	7
Strawberries	5
Walnuts	45

\*PHI = Pre-Harvest interval or the number of days between the last application and harvest; may vary based on use pattern selected. See specific directions for use on grapes

\*\* = Dormant spray only.

Note: To protect bees, do not apply this product to fruit trees when trees or substantial numbers of weeds in the orchard are in bloom.

**BEST AVAILABLE COPY**

Crop	Pest	Rate	Timing/Special Directions
Almonds (CA only)	San Jose Scale, Parlatoria Scale	1-1/2 pts. + 2 to 3 gals. dormant oil or 1-1/2 gals. superior type oil in 100 gals. of water	Apply as a dormant spray. Do not apply more than 6 pts. of diazinon or 9 gals. of oil per acre.
Apricots	Aphids, Brown Mites (Clover Mites), Two-spotted Spider Mites, Olive Scale Crawlers, San Jose Scale Crawlers	1 pt. in 100 gals. of water	Apply as infestations occur. Repeat application after 14 days if necessary.
	Olive Scale Crawlers	1/2 pt. + 1 1/2 gals. of light medium horticultural oil per 100 gals. of water	Apply when scale crawlers are present.
	Apricot Mealybugs	1 pt. per 100 gals. of water	Apply as a cover spray from petal fall to June. Allow 14 days between application.

Notes: (1) Do not apply more than 4 pts. of product per acre per application and no more than 12 pts. of product per acre per season. (2) To avoid illegal residues, allow a minimum of 21 days between the last application and harvest.

Caneberries (Ca, OR and WA only) Blackberries, Boysenberries, Dewberries, Loganberries, Raspberries)	Leafhoppers, Thrips, Aphids, Two-spotted Spider Mites, Raspberry Fruitworms, Raspberry Saw flies	1 qt. per acre	Apply as insects occur. Repeat application after 14 days if necessary. Do not make more than 5 applications per season. Do not apply within 7 days of harvest or illegal residues may occur. Apply in a minimum of 100 gals. of water per acre (200 gals. per acre maximum) For Raspberry Fruitworms make one application when blossom buds separate. Make a second application immediately before blossoms open.
	Dry berry Mites	1-2 qts. per acre	Apply as a dormant spray in the early Spring when canes are still on the ground and buds are closed. Make a second application when buds are well developed but still closed. Apply in a minimum of 100 gals. of water per acre. Do not apply within 7 days of harvest or illegal residues may occur.