

PM 19 19713-89 pg 18 16

file



**UNITED STATES ENVIRONMENTAL PROTECTION AGENCY
WASHINGTON, D.C. 20460**

991

**Barbara Brown
DREXEL CHEMICAL COMPANY
P.O. BOX 9306
MEMPHIS, TN. 38109**

**OFFICE OF
PREVENTION, PESTICIDES AND
TOXIC SUBSTANCES**

**Subject: Label Amendment Submission of 09/08/93 In Response to PR Notice 93-7
EPA Reg. No. 19713-89
DREXEL CARBARYL 2L**

Dear Registrant:

The labeling cited above and submitted in connection with registration under the Federal Insecticide, Fungicide, and Rodenticide Act (FIFRA), as amended, is accepted subject to the comments reflected on the enclosed sheet. A copy of your proposed labeling stamped "ACCEPTED WITH COMMENTS" is enclosed.

WHAT THIS ACCEPTANCE MEANS:

Based on your certification, the Agency has accepted the labeling changes that are necessary to comply with the Worker Protection Standard (WPS) labeling requirements of 40 CFR part 156, subpart K, described in PR Notices 93-7 and 93-11. Any other labeling changes submitted in connection with this amendment application but not directly related to compliance with the WPS have not been reviewed or accepted by the Agency. If you wish to make such changes, you must submit a separate amendment application proposing them. If your product is currently suspended, the acceptance of this labeling amendment does not affect the suspension in any way.

WHAT YOU NEED TO DO NEXT:

By the next label printing make all the specified changes to your labeling. Send to EPA one (1) copy of the final printed labeling:

- **BEFORE** selling or distributing any product bearing the final printed labeling
- AND**
- **WITHIN** one year from date of this acceptance.



Recycled/Recyclable
Printed with Soy/Canola Ink on paper that
contains at least 50% recycled fiber

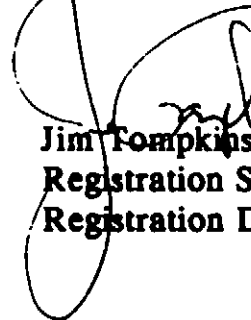
Submit the final printed labeling via the U.S. Postal Service to:

Document Processing Desk (FIN-LABEL)
Office of Pesticide Programs (7505C)
U.S. Environmental Protection Agency
401 M Street, SW
Washington, D.C. 20460-0001

Hand or courier deliveries of final printed labeling may be made to:

Document Processing Desk (FIN-LABEL)
Office of Pesticide Programs
Room 266A, Crystal Mall 2
1921 Jefferson Davis Highway
Arlington, VA 22202

Sincerely,



Jim Tompkins, Deputy Chief
Registration Support Branch
Registration Division (7505W)

Attachment

3/6/16

**UNITED STATES ENVIRONMENTAL PROTECTION AGENCY
Office of Pesticide Programs
Registration Division**

Barbara Brown
DREXEL CHEMICAL CO
BOX 9306
MEMPHIS TN 38109

Comment for: EPA Reg Nr.19713-89
DREXEL CARBARYL 2L

The following specific comments pertain to your WPS labeling submission concerning the product cited above:

Add "N-Methyl Carbamate" to your label in one of the locations shown in Section E on Part 2 of the Product Worksheet in Supplement Three-A to PR Notice 93-7.

Delete the crossed-out statements on your proposed label. They are redundant statements or phrases.

Correct the typographical errors circled on your proposed label.

4/16

**DREXEL
CARBARYL 2L
Insecticide**

For effective control of many listed insect pests on Vegetable Crops, Tree Fruit and Nut Crops, Small Fruit Crops, Trees and Ornamentals, and Lawns and Recreation Areas. Also for control of mosquitoes and listed poultry pests. Can be used in the home as directed.

ACTIVE INGREDIENTS:

Carbaryl (1-Naphthyl N-methylcarbamate).....22.5%
INERT INGREDIENTS:.....77.5%
TOTAL:.....100.0%

**KEEP OUT OF THE REACH OF CHILDREN
CAUTION**

EPA Reg. No. 19713-89
EPA Est. No. 19713-MS-1

STATEMENT OF PRACTICAL TREATMENT

IF SWALLOWED: Induce vomiting by placing finger on back of throat. Call a physician. Never give anything by mouth to an unconscious person.

IF ON SKIN: Remove contaminated clothing and wash skin with soap and plenty of water. If irritation develops, get medical attention.

IF IN EYES: Immediately flush eyes with plenty of water. If irritation develops, get medical attention.

NOTE TO PHYSICIAN: Carbaryl is a moderate, reversible, cholinesterase inhibitor. Atropine is antidotal. Do not use 2-PAM, opiates or cholinesterase inhibiting drugs.

Carbaryl is an N-Methyl Carbamate and is a cholinesterase inhibitor.

PRECAUTIONARY STATEMENTS

HAZARDS TO HUMANS AND DOMESTIC ANIMALS

CAUTION: Harmful if swallowed. Avoid breathing spray mist. Avoid contact with eyes, skin or clothing. Wear regular long-sleeved work clothing. Change to clean clothing before eating. Wash thoroughly after handling. Do not apply this product in areas where children, pets, or other people, workers or other animals are present. The application must be made by trained personnel. Do not use this product in commercial food areas or food handling establishments, such as restaurants, where food is prepared or processed.

PERSONAL PROTECTIVE EQUIPMENT

Applicators without respiratory protection should wear long-sleeved shirts and long pants. Wash hands thoroughly after handling. Shoes and socks should be worn. Do not eat, drink, or use tobacco while using this product.

Follow manufacturer's instructions for cleaning and maintaining PPE. If no instructions are available, use detergent and hot water. Keep and wash PPE separately from other laundry.

ACCEPTED
with COMMENTS
In EPA Letter Dated

FEB 10 1994

Under the Federal Insecticide,
Fungicide, and Rodenticide Act
as amended, for the pesticide
registered under EPA Reg. No.
19713-89

BEST AVAILABLE COPY

USER SAFETY RECOMMENDATIONS:
 Users should:
 Wash hands before eating, drinking, chewing gum, using tobacco or using the toilet.
 Remove clothing immediately if pesticide gets inside. Then wash thoroughly and put on clean clothing.
 Remove PPE immediately after handling this product. Wash the outside of gloves before removing. As soon as possible, wash thoroughly and change into clean clothing.

ENVIRONMENTAL HAZARDS

This product is extremely toxic to aquatic and estuarine invertebrates. For terrestrial uses, do not apply directly to water or to areas where surface water is present or to intertidal areas below the mean high water mark, except under the forest canopy. Do not contaminate water by cleaning of equipment or disposal of wastes.

BEE CAUTION: This product is highly toxic to bees exposed to direct treatment or residues on blooming crops or weeds. Do not apply this product or allow it to drift to blooming crops or weeds if bees are visiting the treatment area.

FARM WORKER SAFETY STATEMENTS

~~Do not enter treated areas without protective clothing until sprays have dried. Because certain states may require more restrictive re-entry intervals for various crops treated with this product, consult your State Department of Agriculture for further information.~~

~~Written or oral warnings must be given to workers who are expected to be in a treated area or in an area about to be treated with this product. Oral warnings must inform workers of areas or fields that may not be entered without specific protective clothing until sprays have dried, and appropriate actions to take in case of accidental exposure, as described under Precautionary Statements on this label. When oral warnings are given, warnings shall be given in a language customarily understood by the workers. Oral warnings must be given if there is reason to believe that written warnings cannot be understood by workers.~~

~~CAUTION. Area treated with CARBARYL on (date of application). Do not enter without appropriate protective clothing until sprays have dried. In case of accidental exposure, flush eyes or skin with plenty of water. Call physician if irritation persists. Remove and wash contaminated clothing before reuse.~~

GENERAL INFORMATION

CARBARYL 2L readily disperses in water to form a spray suspension suitable for home and garden use. READ LABEL BEFORE USE. STRICTLY OBSERVE LABEL DIRECTIONS, AND APPLICABLE FEDERAL AND STATE REGULATIONS.

~~Treated areas may be re-entered immediately after the spray has dried.~~

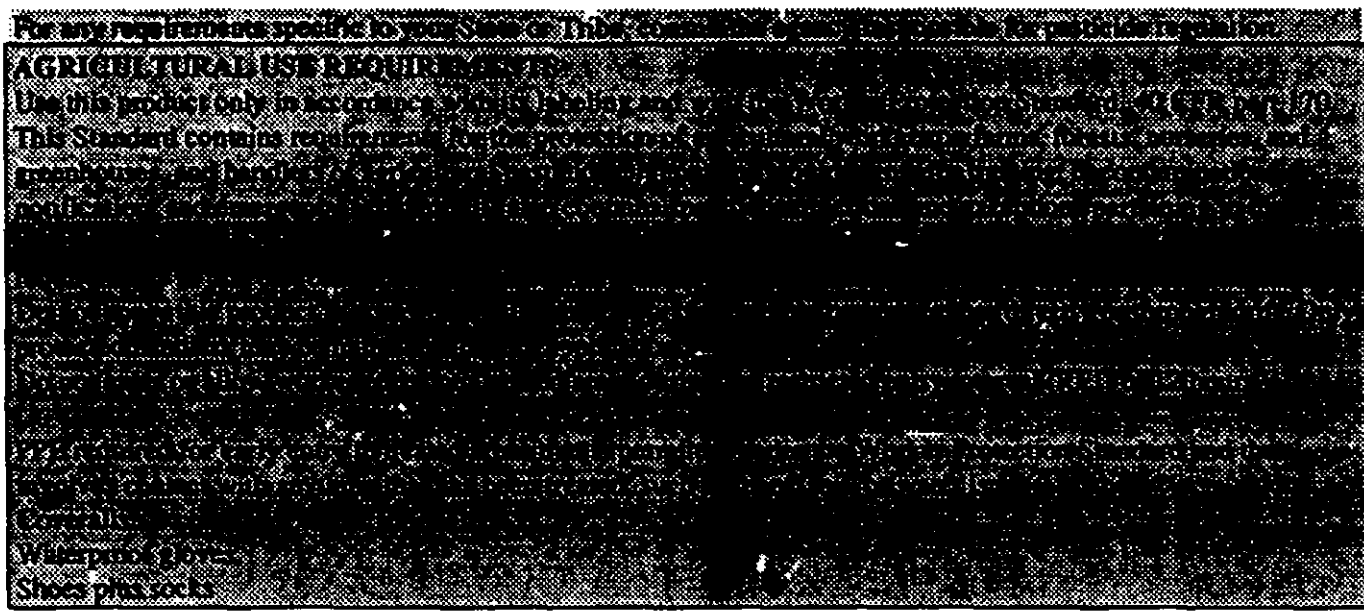
To avoid possible injury to tender foliage, do not apply to wet foliage or when rain or high humidity is expected during the next two days.

CARBARYL 2L injures Boston Ivy, Virginia Creeper and Maiden-hair Fern. During early season, it may also injure Virginia and Sand Pines.

DIRECTIONS FOR USE

It is a violation of federal law to use this product in a manner inconsistent with its labeling. Do not apply this product through any type of irrigation system.

BEST AVAILABLE COPY



Subsequent planting of food and feed crops in treated soil must be made with crops on this or other carbaryl labels.

Read entire label. Use strictly according to label directions and cautions. Do not use application methods, dosages, concentrations or frequencies not listed on labeling. Do not apply against target pests or crops not listed on labeling. Do not mix with fertilizers.

SPRAY PREPARATION

To assure a uniform product, stir or shake all CARBARYL 2L containers prior to use. Clean sprayer thoroughly before use.

Prepare only as much spray mixture as is needed on the day of mixing. Fill sprayer with 1/2 to 3/4 the desired amount of water. Slowly add the required amount of CARBARYL 2L, and then the remaining volume of water. Shake spray mixtures frequently before and during use to prevent settling. Do not store spray mixtures overnight. To clean your sprayer after use, drain and flush with water. Do not use contaminated teaspoons or other measuring devices for other purposes.

COMPATIBILITY

CARBARYL 2L when diluted with an equal volume of water, is compatible with a wide range of pesticides. It is not compatible with diesel fuel, kerosene, fuel oil, or aromatic solvents. If compatibility of CARBARYL 2L with another product and the resulting plant response is unknown, it should be tested on a small scale. Curdling, precipitation, greasing, layer formation or increased viscosity are symptoms of incompatibility. When preparing combination sprays, first add CARBARYL 2L to at least an equal volume of water, mix thoroughly, and then add combination products to the mixture. Do not apply combinations unless your previous experience indicates the mixture is effective and will not result in application problems, excessive residues or plant injury.

Unstable under highly alkaline conditions. Not effective if used with alkaline materials such as Bordeaux, lime-sulfur and casein-lime spreaders.

INSECT CONTROL

Apply when insects or their damage appear. To maintain control, repeat at 7 to 14 day intervals or as necessary unless a shorter interval is specified below. Where a dosage range is indicated, use lower rate on young plants and early instars and higher rate on mature plants, advanced instars and adults. Thorough and uniform spray coverage is essential for effective control. Avoid applications just before rainfall as poor insect control may result.

CARBARYL 2L does not control spider mites. If spider mites are a problem, use a registered miticide.



Crops	Insect	Tsp. of Carbaryl 2L/Gal.	Pre-Harvest Interval (Days)	Specific Directions
Chinese cabbage, Collards, Hanover salad, Horseradish, Kale, Mustard greens, Radishes, Rutabaga, Turnips	Flea beetles, Harlequin bug, Leafhoppers Aster Leafhopper Armyworm, Corn earworm, Fall armyworm, Imported cabbage worm, Stink bugs, Tarnished plant bug	2 to 4 4 to 6 4 to 8	3-(Horse-radish, radishes, rutabagas, and turnip roots) 14-(Chinese cabbage, collards, Hanover salad, kale, mustard greens, and turnip tops)	
Carrots, Parsnips, Parsley, Celery	Flea beetles, Leafhoppers Aster leafhopper, Lygus bugs, Spittlebugs Armyworm, Corn earworm, Fall armyworm, Stink bugs, Tarnished plant bug	2 to 4 4 to 6 4 to 8	0-(carrots) 3-(parsnips) 14 (celery and parsley)	Treat on a 5 to 7 day schedule.
Corn	Armyworm, Chinch bugs, Corn earworm, Corn rootworm adults, European corn borer, Fall armyworm, Flea beetles, Japanese beetle, Sap beetles, Southwestern corn borer, Leafhoppers	4 to 8	0	OBSERVE BEE CAUTION. For insects attacking silks and ears apply at 1 to 6 day intervals starting when first silks appear and continuing until silks begin to dry. For larvae in whorl and foliage feeders, apply as necessary. For chinch bugs use high gallonage ground application directed at the base of plant. Optimum timing and good coverage are essential for effective control.
	Western bean cutworm	8	0	Treat when infestation averages 15% and at 90% to 100% tassel emergence. Treatment after 100% silk emergence will reduce effectiveness.
Cucumber, Melons, Pumpkin, Squash	Pickleworm, Melonworm Cucumber beetles, Flea beetles, Leafhoppers, Squash bugs	2 to 4 4	0	Observe plant response precautions. Avoid excessive applications.

BEST AVAILABLE COPY

Crops	Insect	Tsp. of Carbaryl 2L/Gal.	Pre-Harvest Interval (Days)	Specific Directions
Dandelion, Endive (Escarole), Lettuce, Salsify	Flea beetles, Harlequin bug, Leafhoppers Aster leafhopper, Lygus bugs, Spittlebugs Armyworm, Corn earworm, Fall armyworm, Imported cabbage worm, Stink bugs, Tarnished plant bug	2 to 4 4 to 6 4 to 8	3 - (head lettuce & salsify roots) 14-(dandelions, endive (escarole), leaf lettuce and salsify tops)	Observe plant response precautions. Treat on a 5 to 7 day schedule after heads begin to form.
Garden beet, Spinach, Swiss chard	Flea beetles, Harlequin bug, Leafhoppers Aster leafhopper Armyworm, Corn earworm, Fall armyworm, Stink bugs, Tarnished plant bug	2 to 4 4 to 6 4 to 8	3-(garden beet roots) 14-(garden beet tops, spinach, Swiss chard)	Treat on a 5 to 7 day schedule.
Okra	Corn earworm, Stink bugs	4 to 8	0	Treat on a 5 to 7 day schedule.
Peanuts	Blister beetles, Mexican bean beetle Alfalfa caterpillar, Bean leaf beetle, Cucumber beetles, Green clover worm, Japanese beetle, Leafhoppers, Red-necked peanutworm, Three-cornered alfalfa hopper, Thrips, Velvetbean caterpillar Armyworm, Corn earworm, Fall armyworm, Stink bugs, Webworms Cutworms, Whitefringed beetle adults	2 to 4 4 4 to 6 8	0	Observe plant response precautions.
Peas	Colorado potato beetle, Leafhoppers Armyworm Alfalfa caterpillar, Cutworms, Pea leaf weevil, Pea weevil, Yellow striped armyworm Alfalfa looper	4 4 to 6 6 10	0	WASHINGTON STATE ONLY

BEST AVAILABLE COPY

LAWNS AND RECREATIONAL AREAS

Crop	Insect	Specific Directions
Lawns and Recreational Areas	Ants, Armyworm, Bluegrass billbug, Centipedes, Chiggers, Cutworms, Earwigs, Essex skipper, European chafer, Fall armyworm, Fiery skipper, Fleas, Grasshoppers, June beetles, Leafhoppers, Lucerne moth, Millipedes, Mosquitoes, Sod webworm, (Lawnmoths), Sowbugs, Springtails, Ticks, Yellow striped armyworm Chinch bugs, White grubs	Use 2 quarts of CARBARYL 2L in 150 to 200 gallons of spray mixture per 5000 square feet of established lawn, recreational area, roadway or path border. For best results, mow lawn and apply after watering or rain. Ensure good penetration of turf. Garden hose or pressure applicators may be used. Repeat 2 to 3 weeks later if necessary. Use 3 quarts of CARBARYL 2L in 150 to 200 gallons of spray per 5000 square feet.

MOSQUITO CONTROL

For dilute-spray ground applications to trees (including shade trees, shelter belts, plantations, parks and recreational area:), ornamentals, woody plants and shrubs, apply the specified dosage per 1 gallon of water. Avoid direct application to lakes, streams and ponds.

Crop	Amount of Carbaryl 2L/Gallon	Specific Directions
Yards and Recreational Areas	1 to 2 tablespoonfuls/gal. 16 oz/gal.	ADULT MOSQUITOES CAUTION: May kill shrimp and crabs. Do not use in areas where these are important resources. Treat shrubbery and areas where adult mosquitoes congregate. Treat when adult mosquitoes are active in early morning or late evening. Repeat at 7 to 10 day intervals. For residual control in subtropical regions apply 4 gallons of prepared spray per 2000 sq. ft. of surface area. Repeat in 3 to 6 months or when necessary.

PEST CONTROL IN AND AROUND BUILDINGS - LIMITED TO PEST CONTROL OPERATORS ONLY

Insect	Amount of Carbaryl 2L/Gal.	Specific Directions
Ants, Cockroaches Brown dog tick, Earwigs, Fleas, Millipedes, Silverfish	17 ounces/gal. 7 ounces/gal.	For use in and around buildings such as homes, apartments, warehouses, barns, and municipal and recreational areas. Apply as a coarse wet spray or with a paint brush to outdoor sleeping quarters of pets, outside perimeter of dwellings and other areas where insects tend to congregate. Do not use in food areas or food handling establishments, restaurants or other areas where food is commercially prepared or processed. Do not use in serving areas while food is exposed.

POULTRY INSECT CONTROL

Poultry	Insect	Specific Directions
Chickens, Ducks, Geese, Gamebirds, Pigeons, Turkeys	Chicken Mites, Fleas, Lice, Northern Fowl Mites	FOR USE AS A DIRECT SPRAY MIST ON BIRDS BY: 1. Misting with Electric Fog Machine: Mix 20 ounces of Carbaryl 2L in 1 gallon of spray. Use 1 1/2 gallons per 1000 hens in cages, on litter or on slatted floor. Repeat in 4 weeks if necessary, or 2. Spraying with knapsack or cylinder type compressed air sprayers: Mix 12 ounces of CARBARYL 2L in 5 gallons of spray. Use 1 gallon per 100 hens in cages, on litter or slatted floor. Repeat in 4 weeks if necessary. Direct mist spraying for chicken mite and fleas is a supplement to spraying roosts and buildings for control of these pests. Do not apply to poultry and game birds within 7 days of slaughter.

BEST AVAILABLE COPY

TREE FRUIT AND NUT CROPS

All dosages refer to teaspoonfuls of CARBARYL 2L per gallon of water. Use sufficient spray gallonage to obtain thorough coverage. Do not exceed maximum rate of CARBARYL 2L per gallon of spray. (One teaspoonful equals 0.17 fluid ounces or 5 milliliters. Three teaspoonfuls equal one tablespoonful.)

Crops	Tsp. of Carbaryl 2L/Gal.	Pre-Harvest Interval (Days)	Specific Directions
Apple Thinning			Apply 1 full coverage dilute spray between 10 and 25 days after full bloom. If factors such as tree age, variety, nutrition, previous crop, pruning, bloom and degree of set favor excessive fruit thinning with CARBARYL 2L, exercise caution to avoid possible yield reduction.
Apples only	1 to 2	1	For easily thinned varieties including Cortland, Grimes, Jonathan, McIntosh, Orleans, Rome Beauty, Puritan, Red Delicious, Winesap, Yellow Newton.
	2 to 4	1	For difficult to thin varieties including Baldwin, Ben Davis, Duchess, Early McIntosh, Golden Delicious, Lady Apple, Northern Spy, Rhode Island Greening, Steele Red, Turkey, Wealthy, Yellow Transparent and York Imperial.

Crops	Insect	Tsp. of Carbaryl 2L/Gal.	Pre-Harvest Interval (Days)	Specific Directions
Almond	Peach twig borer, San Jose Scale, Fruitree leafroller	4	28	Apply in "popcorn" or petal fall stages and again when the May brood of the peach twig borer begins to hatch or thereafter as needed. Time early and mid season applications to correspond to moth flight peaks. Make a late season application at initiation of hull split or up to 10% hull split. Do not apply more than 3 fluid ounces of CARBARYL 2L per 430 sq. ft. per application.
	Navel orangeworm	4	28	

BEST AVAILABLE COPY

15, 1/16

Crops	Insect	Tsp. of Carbaryl 2L/Gal.	Pre-Harvest Interval (Days)	Specific Directions
Apples, Pears	Apple aphid, Apple rust mite, Apple sucker, Bagworms, California pearslug (pear sawfly), Codling moth, Eyespotted bud moth, Green fruitworm, Lecanium scales, Lesser appleworm, Lygus bugs, Orange tortrix, Oystershell scale, Pear leaf blister mite, Pear Psylla, Pear rust mite, San Jose scale, Tentiform leafminers, Woolly apple aphid,	3 to 4	1	<p>WEST OF THE ROCKY MOUNTAINS</p> <p>To avoid undesired apple thinning, delay use until at least 30 days after full bloom. For psylla control apply when eggs hatch or young nymphs are present.</p> <p>EAST OF THE ROCKY MOUNTAINS</p> <p>To avoid undesired apple thinning, delay use until at least 30 days after full bloom.</p> <p>For optimum scale control, apply when crawlers are present.</p>
	Apple mealybug, Apple aphid, Codling moth, White apple leafhopper	2		
	Apple maggot, Apple rust mite, Bagworms, Eastern tent caterpillar, European apple sawfly, Eyespotted bud moth, Forbes scale, Fruittree leafroller, Green fruitworm, Japanese beetle, Lecanium scales, Lesser appleworm, Oystershell scale, Pear psylla, Pear leaf blister mite, Pear rust mite, Periodical cicada, Plum curculio, Red-banded leafroller, Rosy apple aphid, San Jose scale, Tarnished plant bug, Tentiform leafminers, Woolly apple aphid, Yellowheaded fireworm.	4	1	
Citrus Fruits (such as grapefruit, lemons, limes, oranges, tangelos, tangerines, citrus citron, kumquats and hybrids)	Avocado leafroller, California orangedog, Citrus cutworm, Citrus root weevil, Fruittree leafroller, Orange tortrix, Western tussock moth, West Indian sugarcane borer (adult)	4	5	<p>Do not apply more than 13 fluid ounces of CARBARYL 2L per 430 sq. ft. per application. Do not apply less than 10 gallons of dilute spray mixture per mature tree. May be mixed with petroleum oils commonly used on citrus.</p>
	Black scale, Brown soft scale, California red scale, Citricola scale, Citrus snow scale, Yellow scale	3 to 4	5	
Filbert	Filbert aphid, Filbert leafroller, Filbertworm	4	0	<p>Apply when leafroller eggs are hatching. Repeat on first appearance of adult filbert moths and again 3 to 4 weeks later.</p>
Olives	Olive scale	3 to 4	0	<p>For optimum scale control, add 12 teaspoons of summer oil per gallon and apply mixture when crawlers are present. Do not exceed 2 applications per year. Do not apply more than 9.6 fluid ounces of CARBARYL 2L per 430 sq. ft. per application.</p>

BEST AVAILABLE COPY

11/5 16

Crops	Insect	Tsp. of Carbaryl 2L/Gal.	Pre-Harvest Interval (Days)	Specific Directions
Peaches, Apricots, Nectarines	Apple pandemis, Codling moth, Cucumber beetles, European earwig, Fruitree leafroller, Japanese beetle, June beetles, Lecanium scales, Lesser peachtree borer, Olive scale, Orange tortrix, Oriental fruit moth, Peach twig borer, Periodical cicada, Plum curculio, Tussock moth, Variegated leafroller	4	1-(peaches) 3-(apricots and nectarines)	Do not apply more than 4 fluid ounces of CARBARYL 2L per 430 sq. ft. per application to apricots. For optimum scale control apply when crawlers are present. Spray limbs and trunk thoroughly, weekly during moth flight.
Pecans	Black margined aphid, Fall webworm, Hickory shuckworm, Lesser webworm, Pecan leaf phylloxera, Pecan nut casebearer, Pecan spittlebug, Pecan weevil, Twig girdler, Walnut caterpillar	4 to 10	0	Do not apply more than 5 fluid ounces of CARBARYL 2L per 430 sq. ft. per application.
Plums, Prunes, Cherries	Black cherry aphid, Brown soft scale, Cherry fruitworm, Cherry maggot, European earwig, Eyespotted bud moth, Forbes scale, Fruitree leafroller, Green fruitworm, Japanese beetle, Lecanium scale, Lesser peachtree borer, Mealy plum aphid, Oyster-shell scale, Peach twig borer, Plum curculio, Prune leafhopper, Red-banded leafroller, Rose chafer, San Jose scale, Variegated leafroller.	4	1	Do not apply more than 4 fluid ounces of CARBARYL 2L per 430 sq. ft. per application. For optimum scale control apply when crawlers are present. For lesser peachtree borer control, spray limbs and tree trunks thoroughly, weekly during moth flight.
	Codling moth, eastern tent caterpillar, Orange tortrix, Tussock moth	3	1	See Above
Walnut	Calico scale, European fruit lecanium, Filbertworm, Fruitree leafroller, Frosted scale	2		Apply 3 fluid ounces of CARBARYL 2L spray per 430 sq. ft. for mature trees.
	Codling moth	2	0	For codling moth, apply first spray when average cross sectional diameters of developing nuts are 1/2 to 3/4 inch.
	European earwig	8	0	Spray tree trunks to point of run-off.

BEST AVAILABLE COPY

SMALL FRUIT CROPS

All dosages refer to teaspoonfuls of CARBARYL 2L per gallon of water. Use sufficient spray gallonage to obtain thorough coverage. Do not exceed maximum rate of CARBARYL 2L per gallon of spray. (One teaspoonful equals 0.17 fluid ounces or 5 milliliters. Three teaspoonfuls equal one tablespoonful.)

Crops	Insect	Tsp. of Carbaryl 2L/Gal.	Pre-Harvest Interval (Days)	Specific Directions
Blackberries, Raspberries, Dewberries (including boysenberries and loganberries)	European raspberry aphid, Japanese beetle, Leafhoppers, Leafrollers, Rose chafer, Snowy tree cricket	4 to 8	7	CALIFORNIA ONLY
	Omnivorous leafroller, Raspberry sawfly	8	7	
Blueberries	Blueberry maggot, Cherry fruitworm, Cranberry fruitworm, European fruit lecanium, Japanese beetle	6	0	Apply 3 weeks before harvest and repeat as necessary.
Cranberries	Cutworms, Cranberry fireworms, Cranberry fruitworms, Japanese beetle, Leafhoppers, Rose chafer	6 to 12	1	CAUTION: May kill shrimp and crabs. Do not use in areas where these are important resources. Apply in late bloom and as needed at 7 to 10 day intervals.
Grapes	European fruit lecanium, Grape leafroller, Grape leafhopper, Western grapeleaf skeletonizer, Western yellow-striped armyworm	4 to 8	0	Apply before first brood leafroller larvae emerge from rolls.
	Cutworms, Eight-spotted forester, Grape berry moth, Japanese beetle, June beetles, Orange tortrix, Omnivorous leafroller, Redbanded leafroller, Saltmarsh caterpillar	8	0	
Strawberries	Flea beetles, Meadow spittlebug, Omnivorous leaflier (Strawberry fruitworm), Strawberry leafroller, Strawberry weevil	4 to 8	1	CARBARYL 2L may injure Early Dawn and Sunrise varieties on the Delmarva Peninsula.

POULTRY ROOSTS AND BUILDINGS ONLY

Poultry Quarters	Amount of Carbaryl 2L/Gallon	Specific Directions
Bed Bugs, Chicken mite, Fleas, Lice, Northern fowl mite	5 tablespoons/gal.	Apply 12 to 25 ounces of spray mixture per 100 square feet of wall, litter or roost surface. Force spray into cracks. Repeat as needed. Avoid contamination of nests, eggs and feeding and watering troughs. Ventilate while spraying. Do not treat premises within 7 days of slaughter.
Fowl tick	10 ounces/gal.	See Above
Less mealworms	33 ounces/gal.	Apply 25 ounces of spray mixture per 100 square feet of floor space or litter surface. Repeat as needed. Ventilate while spraying. Do not treat premises within 7 days of slaughter.

BEST AVAILABLE COPY

STORAGE AND DISPOSAL

Do not contaminate water, food, or feed by storage or disposal.

STORAGE INSTRUCTIONS

Storage should be under lock and key and secure from access by unauthorized persons and children. Storage should be in a cool dry area away from any heat or ignition source. Avoid storage at high temperatures. Do not stack over 2 pallets high. Move containers by handles or cases. Do not move containers from one area to another unless they are securely sealed. Keep container tightly sealed when not in use. Keep away from any puncture source. Avoid storage near water supplies, food, feed and fertilizer to avoid contamination. Avoid contamination with acids and alkalis. Store in original containers only. If the contents are leaking or material is spilled, follow these steps:

1. Contain spill, absorb with a material such as sawdust, clay granules, or dirt.
2. Collect and place in suitable containers for disposal.
3. Wash area with water and soap to remove remaining pesticide.
4. Follow washing with clean water rinse.
5. Place a leaking container in a plastic tub and transfer the contents as soon as possible to an empty original container.
6. Do not allow run off to enter sewer or contaminate water supplies.
7. Dispose of wastes as indicated below:

PESTICIDE DISPOSAL

Wastes resulting from the use of this product may be disposed of on or at an approved waste disposal facility.

CONTAINER DISPOSAL

Triple rinse (or equivalent). Then offer for recycling or reconditioning, or puncture and dispose of in a sanitary landfill, or incineration, or if allowed by state and local authorities, by burning. If burned, stay out of smoke.

WARRANTY - CONDITION OF SALE

OUR RECOMMENDATIONS FOR USE of this product are based upon tests believed reliable. Follow directions carefully. Timing and method of application, weather and crop conditions, mixtures with other chemicals not specifically recommended, and other influencing factors in the use of this product are beyond the control of the seller. Buyer assumes all risks of use, storage and handling of this material not in strict accordance with directions given herewith. In no case shall Drexel or the seller be liable for consequential, special or indirect damages resulting from the use or handling of this product when such use and/or handling is not in strict accordance with directions given herewith. The foregoing is a condition of sale by Drexel Chemical Company and is accepted as such by the Buyer

BEST AVAILABLE COPY