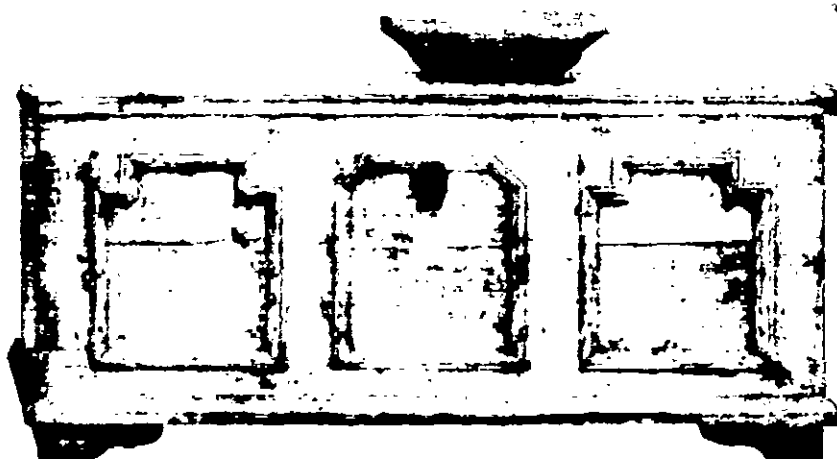


Xylamon

Wood Worm Killer



ACTIVE INGREDIENTS:

Lindane (Gamma Isomer of Benzene Hexachloride)	1 %
Inert Ingredients	99 %
TOTAL	100 %

KEEP OUT OF REACH OF CHILDREN

CAUTION

See side panel for additional precautionary statements.

EPA Est 18910-WG-01

EPA REG NO 18910-1

NET WT. 84 FL. OZ. (2.5 l)

DESOWAG BAYER

Holzschutz GmbH - 4000 Düsseldorf 30 West Germany

Xylamon

WOOD WORM KILLER

Wood Preservative

A special preparation for the control of powder-post beetles (Lyctus and Longhorn) and other woodworm in picture frames, wood mouldings, works of art, furniture and other woodwork.

PRECAUTIONARY STATEMENTS

Hazards to Humans & Domestic Animals

Avoid inhalation of vapors. Do not use for purposes other than woodworm control.

Harmful if swallowed, inhaled or absorbed through skin!

Avoid contact with skin, eyes or clothing.

Wear suitable protective clothing namely synthetic rubber/PVC gloves when applying.

In case of contact with skin or eyes flush with plenty of water, for eyes get medical attention.

Avoid contamination of feed and foodstuffs. Keep out of reach of children.

Xylamon

WOOD WORM KILLER

STATEMENT OF PRACTICAL TREATMENT

If swallowed -

Call a physician or Poison Control Center immediately. Gastric lavage is indicated if material was taken internally. DO NOT INDUCE VOMITING. Vomiting may cause aspiration pneumonia.

If inhaled -

Remove victim to fresh air. Apply artificial respiration if indicated.

If on skin -

Remove contaminated clothing and wash affected areas with soap and water.

If in eyes -

Flush eyes with plenty of water. Get medical attention immediately.

Physical or Chemical Hazards

Do not use, pour, spill or store near heat or open flame.

DIRECTIONS FOR USE

Unscrew small cap and pierce nozzle with pin, inject the fluid into flight holes about 1 inch apart, and then seal all flight holes with wax. Wipe away surplus fluid.

