

RSE
1
2
3
4
5
6
7
8
9
10
11
12

SEE SIDE OF LABEL

8 - Ways

CLEAR WOOD PRESERVATIVE

8-WAY WARRANTY STAIN & WOOD PRESERVATIVE

- Penetrates & protects natural wood beauty
- Resists rot
- Resists mildew
- Water repellent
- Resists fading
- Guards against warping
- Resists cracking
- Easy to apply

When applied according to directions, if stain fails to perform as specified above, our obligation shall be limited solely to the refund of the purchase price. This warranty does not include labor or cost of labor for application of stain.

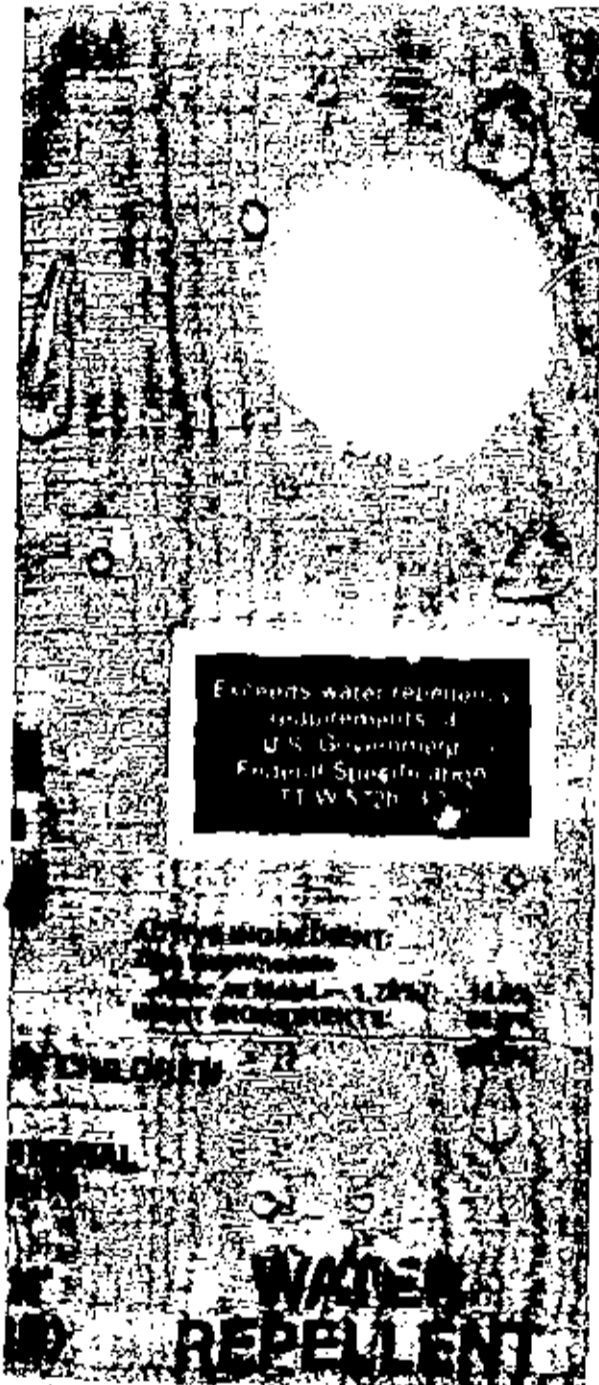
**KEEP OUT OF THE REACH
CAUTION
SEE BACK PANEL FOR ADDITIONAL PRECAUTIONARY STATEMENTS**

RETARDS ROT AND MILDEW

EPA REG. NO. 17328-2
EPA EST. NO. 17328-IN-1

401 - CLEAR

**ONE GALLON
(3.785 LITER)**



Clear Wood Preservative

One Coat Preserves, Protects and Beautifies

Resists Mildew • Resists Rotting and Decay

Clear Wood Preservative protects against the natural enemies of wood -- moisture, rot and mildew. This product will preserve, protect, seal and beautify all the natural wood surfaces around your home. Retards warping, swelling, shrinking and checking.

This special formula contains a long lasting fungicide (Zinc Naphthenate) along with special additives that seal out degradation caused by moisture and water.

Clear Wood Preservative is recommended for above ground use on millwork, plywood, structural lumber, fences, roofs, shingles and siding -- all exterior wood that is subject to moisture and weathering. It is very useful over any wood where no color is desired and is excellent as a long lasting sealer over previously or newly stained or painted surfaces.

How to Use

For proper penetration, wood must be clean and dry. All surfaces should be thoroughly clean and dry before applying. Unsightly mildew stains should be scrubbed with a solution of 1 quart household bleach to 3 quarts of warm water. Let stand for 30 minutes, then rinse with water. Apply liberally by brush, roller, spray or dipping. For extra durability, apply a second coat within one hour of the first coat. If painting or staining is desired, the surface must first either be weathered or thoroughly sanded. Not recommended to be overcoated with latex (water based) paint until well weathered.

Coverage

Approximately 200-400 square feet per gallon, depending upon method of application and porosity of wood being treated.

Clean-Up

Clean brushes and equipment with mineral spirits or other suitable paint thinners.

Meets or exceeds water repellency requirements of U.S. Federal Test Specification TT-W-572b, 3.7

Precautionary Statements

Hazards to Humans (and Domestic Animals)

CAUTION

Harmful if swallowed. Avoid contact with skin, eyes, or clothing.

FIRST AID

If swallowed, do not induce vomiting. Call physician immediately. In case of contact, immediately flush eyes or skin with plenty of water. Get medical attention if irritation persists.

Environmental Hazards

This product is toxic to fish. Do not apply directly to lakes, streams or ponds.

Physical and Chemical Hazards

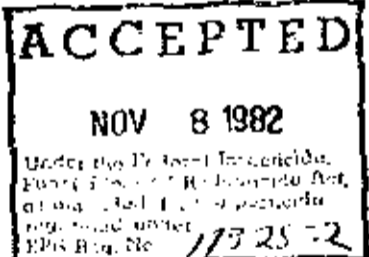
Keep away from heat and open flames.

Directions for Use

It is a violation of federal law to use this product in a manner inconsistent with its labeling.

Storage and Disposal

Do not reuse empty container. Wrap container and put in trash collection.



MANUFACTURED BY UNITED COATINGS, INC., CHICAGO, ILLINOIS 60618