

[15834-1]

DIRECTIONS

Remove protective cap from top of can. Hold can upright, point opening in valve in desired direction for spray. To release spray, press valve downward.

Flies, Mosquitoes, Gnats: Spray upwards into four corners of closed room, about 4 to 6 seconds for each 1000 cu. ft. About 6 to 8 seconds for average room. Close windows and doors for about 15 minutes after treatment.

Flying Moths, Wasps, Hornets: Spray 20 to 25 seconds per 1000 cu. ft. Spray liberally into cracks of woodwork, walls, floors, hiding and breeding places, directly on insects when possible. Repeat as necessary.

Roaches, Ants, Fleas, Silverfish: Spray liberally into cracks of woodwork, walls, floors, hiding and breeding places, directly on insects when possible. Thoroughly spray sleeping quarters of animal pets. Repeat as necessary.

Bedbugs: Spray bed frame, springs, mattress tufts, seams and all cracks and hiding places about bedroom.

Clothes Moth Larvae, Carpet Beetles: Clean, air and brush clothing, rugs, carpets and fabrics. Spray thoroughly from 3 ft. distance especially seams, folds, under collars and lapels. Clean and spray closets and drawers. Repeat approximately every 30 days.

WARNING: FLAMMABLE!

Caution: Contents under pressure. Do not puncture. Exposure to high temperature will cause bursting. Do not store in direct sunlight or where temperature exceeds 120° F. Keep at room temperature, away from radiators, stoves, hot water and other heat. Never throw container into fire or incinerator. Avoid freezing. Keep out of the reach of children. Remove birds, pets, and fish bowls from rooms being sprayed. Do not spray on plastics or asphalt tile.

Directions for use in an enclosed area:
"Do not remain in treated areas. Ventilate the area after treatment is completed."

Foods should be removed or covered during treatment. All food processing surfaces should be covered during treatment or thoroughly cleaned before using. When using the product in these areas, apply only when the facility is not in operation.

Active Ingredients:

Pyrethrins	0.3%
* Technical Piperonyl Butoxide*	0.6%
Noctyl Bicycloheptene Dicarboximide	1.0%
Petroleum Distillate	18.1%
Inert Ingredients Propellant	80.0%
Dichlorodifluoromethane	40.0% by weight
Trichloromonofluoromethane	40.0% by weight

*Equivalent to 0.48% (butylcarbityl) (6-propyl-piperonyl) ether and 0.12% related compounds

USDA Reg. No.

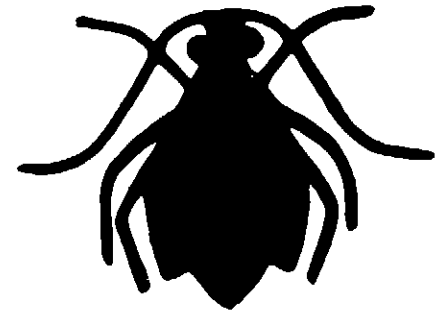
EPA Reg. No. 15834-1

UNDER
FUNGICID
FOR ROOM
ED UNDER
TO ATTACK

15834-1



COMBAT



SPRAY INSECTICIDE

Pleasantly Scented

ED FOR HOSPITAL • SCHOOL • HOTEL
• OFFICE • RESTAURANT • HOME
REST ROOM • FACTORY • INSTITUTION