

DIRECTIONS

FLYING INSECTS—MOSQUITOES, FLIES, GNATS.—Hold dispenser upright above the head. Moving the dispenser in a sweeping motion aids dispersion. Use sparingly 6-7 seconds per 1,000 cubic feet (10x10x10) is sufficient. It is not necessary to spray directly on the insect. Do Not Waste. A little goes a long way. Shut doors and windows. Keep room closed 10-20 minutes.

CRAWLING INSECTS; ROACHES, SILVERFISH. — Direct spray into cracks and crevices, behind sinks, cupboards, drawers, pipes, drains, etc., where insects congregate or occur.

ANTS.—Same as for roaches, also treat ant trails, areas around doors and windows and nests.

FABRIC INSECTS — MOTHS, CARPET BEETLES. — Holding dispenser three (3) feet from article, lightly spray especially seams and folds. ~~Store articles in clean closets, chests, and bureaus that have been sprayed with M T X. Repeat treatment in 30 days.~~

FLEAS. — Lightly spray infested areas such as rugs, baseboards, cracks in floor, paying particular attention to areas where animal frequents.

BED BUGS. — Lightly spray slats, springs, cracks and crevices of bed. Spray seams and tufts of mattress. Also spray cracks and hiding places behind baseboards, loose wallpaper, picture frames and moulding.

TO KILL RED FLOUR BEETLE, MEDITERRANEAN FLOUR MOTH, MEAL WORMS AND CONFUSED FLOUR BEETLE.—Remove all food. Destroy infested foods. Spray interior of closet or pantry paying particular attention to cracks and crevices. Keep closet/pantry closed for 20 minutes.

CAUTION: Keep away from children. Avoid inhalation. Harmful if swallowed. Avoid contamination of food, work tables and utensils. Remove all pets from room before spraying.

WARNING: Contents under pressure. Do not puncture. Do not use or store near heat or open flame. Exposure to temperatures above 130°F may cause bursting. Do not throw container into fire or incinerator.

CONTAINS:

ACTIVE INGREDIENTS

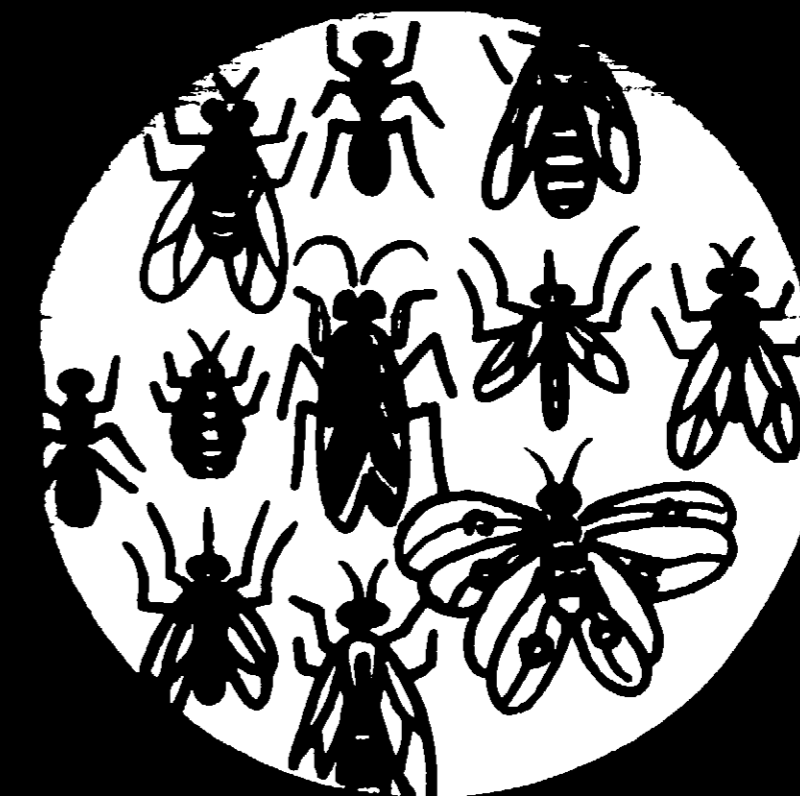
Methoxychlor, Technical	2.5%
Equivalent to 2.3% 2,2-bis (p-methoxyphenyl)-1,1,1-trichloroethane and 0.2% other isomers and related compounds.	
Pyrethrins	0.3%
Piperonyl Butoxide, Technical	1.5%
Equivalent to 1.2% (butylcarbityl) (6-propylpiperonyl) ether and 0.3% related compounds.	

Petroleum Distillates	15.7%
-----------------------------	-------

INERT INGREDIENTS	80.0%
--------------------------------	--------------

*The maker of M T X guarantees this product will kill insects listed when used as directed. If not completely satisfied return partly used container to manufacturer for full refund.

FEDERAL AND ROENTGEN ACT
FOR ENFORCEMENT OF POISON REGISTRATION
NO. 15746-2



CAUTION

NET WT 12 OZ

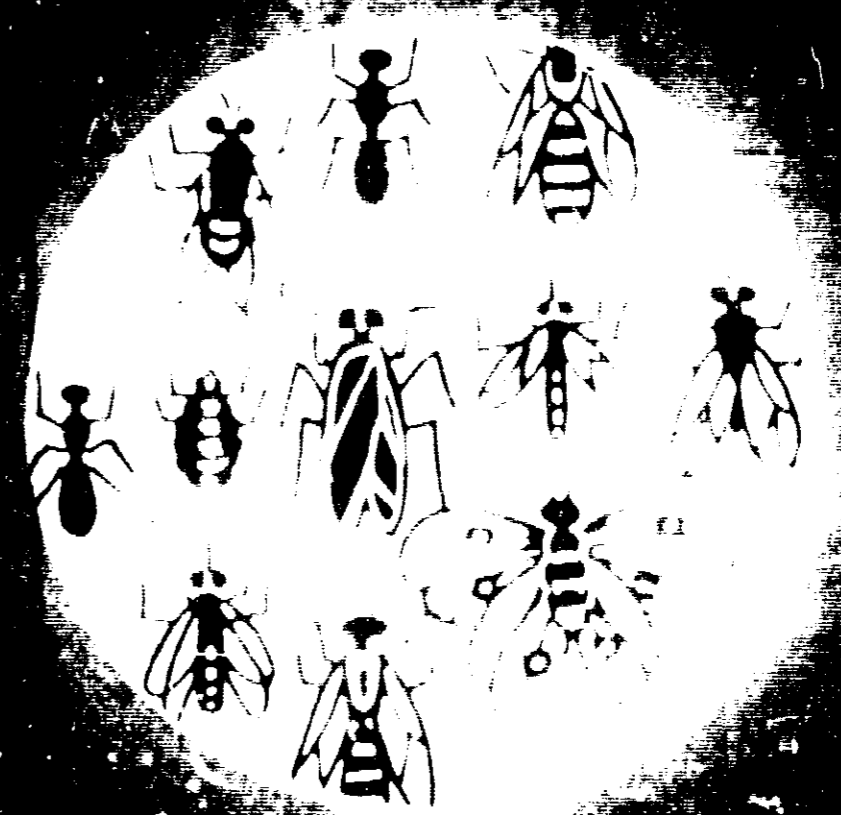
DIRECTIONS

HOUSEHOLD

INSECTICIDE

KILLS

HOUSEHOLD OR GARDEN INSECTS
THAT FLY, CRAWL OR WALK
(LISTED ON BACK OF LABEL)



CAUTION - KEEP OUT OF REACH OF CHILDREN
(See directions and cautions on back)

NET WT. 12 OZ.

E.P.A. REGISTRATION NO. 15746-2

ECOLOGICAL MFG. CORP., NEW YORK, N.Y. 10019

1973