

**DANGER**

**IODINE (Technical Grade)**

**☠ POISON ☠**

**KEEP OUT OF REACH OF CHILDREN**

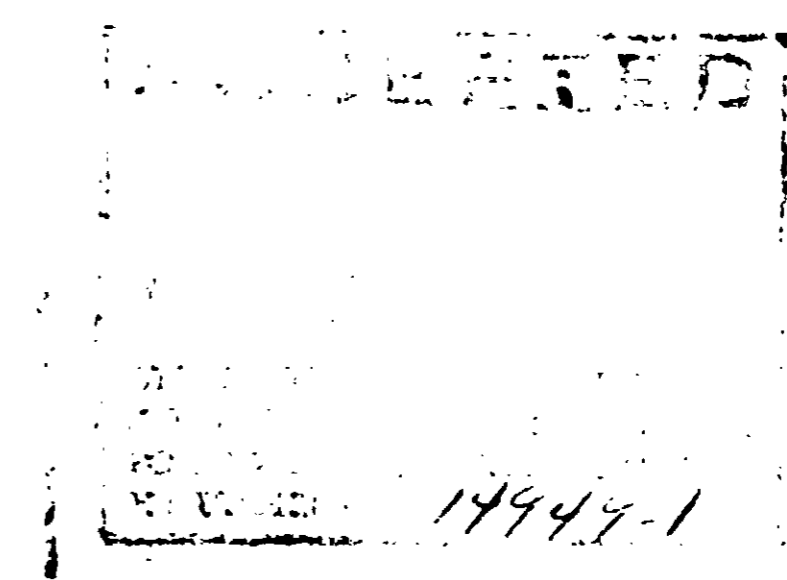
**For Use As A Water Disinfectant**

**NET WEIGHT 3 LBS.**

Active Ingredient: Iodine . . . not less than . . . 99.5%

Inert Ingredient: . . . not more than . . . 00.5%

**EPA REGISTRATION NUMBER 14949-1**



**DANGER:** May be fatal if swallowed. May be intensely irritating to eyes, skin and mucous membranes. Do not breathe vapor.

**ANTIDOTE, INTERNAL:** Drink freely a thin paste of starch or flour (2 tablespoonfuls with water) or sodium Thiosulfate (2 Grams-approximately 1/2 teaspoonful-in water) followed by Emetic of Mustard in water (preferably warm) or other Emetic. **CALL A PHYSICIAN IMMEDIATELY.** Until his arrival, give Demulcents and strong tea or coffee.

**FOR SKIN IRRITATION:** Flush freely with water or wash gently with soap and water or with a solution of Sodium Thiosulfate (Photographer's Hypo), 2 teaspoonfuls or more in a pint of water.

**FOR EYES:** If in contact with eyes, flush thoroughly with water, **CALL A PHYSICIAN IMMEDIATELY.**

Keep Container Tightly Closed - Store in Cool Place

**DIRECTIONS FOR USE OF FEEDER:** Iodine Feeders are used to disinfect water that is not potable (unfit for human consumption bacteriologically) as it is pumped from wells, springs, or whatever the source may be, into a water storage tank, from where it is distributed after treatment. Follow directions provided with the feeder to obtain a residual of titrable iodine after thirty minutes contact time, that meets the requirements of your state or local health department or the regulatory department in your jurisdiction. Thirty minutes or more after the feeder had been operating, use P.P.M. Iodine Test Kit provided to determine the residual of titrable iodine in the treated water. "Do not reuse container. Destroy it by burning it with waste or by burning. Stay away from smoke or fumes".

Distributed by: **CANADOCHLY WATER CONDITIONING CO., INC.**

Box 131, East Prospect, Pa. 17317 Phone 252-2369