



OFFICE OF CHEMICAL SAFETY AND POLLUTION PREVENTION

WASHINGTON, D.C. 20460

November 18, 2025

April Vingum
avingum@belllabs.com
BELL LABORATORIES, INC

Subject: Non-PRIA (Pesticide Registration Improvement Act) Labeling Amendment - Addition of Alternate Brand Name
Product Name: CONTRAC CALIFORNIA BROMETHALIN BLOX
Admin Number: 12455-151
EPA Receipt Date: 08/13/2025
Action Case Number: 00664038

Dear April Vingum:

The amended labeling referred to above, submitted in connection with registration under the Federal Insecticide, Fungicide, and Rodenticide Act, as amended, is acceptable.

The alternate brand name: Contrac 24 Bromethalin Blox has been added to the registration. Our records have been updated accordingly. This approval does not affect any terms or conditions that were previously imposed on this registration. You continue to be subject to existing terms or conditions on your registration and any deadlines connected with them.

A stamped copy of your labeling is enclosed for your records. This labeling supersedes all previously accepted labeling. You must submit one (1) copy of the final printed labeling before you release this product for shipment with the new labeling. In accordance with 40 CFR § 152.130(c), you may distribute or sell this product under the previously approved labeling for 18 months from the date of this letter. After 18 months, you may only distribute or sell this product if it bears this new revised labeling or subsequently approved labeling. "To distribute or sell" is defined under FIFRA section 2(gg) and its implementing regulation at 40 CFR § 152.3.

Should you wish to add/retain a reference to your company's website on your label, then please be aware that the website becomes labeling under FIFRA and is subject to review by EPA. If the website is false or misleading, the product will be considered to be misbranded and sale or distribution of the product is unlawful under FIFRA section 12(a)(1)(E). 40 CFR § 156.10(a)(5) lists examples of statements the EPA may consider false or misleading. In addition, regardless of whether a website is referenced on your product's label, claims made on the website may not substantially differ from those claims approved through the registration process. Therefore, should the EPA find or if it is brought to our attention that a website contains statements or claims substantially differing from statements or claims made in connection with obtaining a FIFRA section 3 registration, the website will be referred to the EPA's Office of Enforcement and Compliance Assurance.

Your release for shipment of this product constitutes acceptance of these terms. If these terms are not complied with, this registration will be subject to cancellation in accordance with FIFRA section 6.

If you have questions, please contact Scott Campbell via email at campbell.scott@epa.gov.

Sincerely,

A handwritten signature in black ink that reads "Scott Campbell (for)". The script is fluid and cursive, with the word "for" in parentheses.

Melissa Bridges, PM07
IVB3, RD
Office of Pesticide Programs

Confrac® California Bromethalin Blox**

[Alternate Brand Name] CONTRAC® 24 BROMETHALIN BLOX™

*[Qualifier statement immediately following brand name] **Norway rats, Roof rats and House mice usually consume a lethal dose in a single night's feeding, but it may take two or more days from the time of bait consumption for these rodents to die.*

Mold Resistant

Moisture Resistant

This Product May Only be Used Inside and Within 100 Feet of Man-made Structures

KILLS RATS, MICE, AND MEADOW VOLES*

**KILLS ANTICOAGULANT RESISTANT NORWAY RATS,
ROOF RATS AND HOUSE MICE**

Norway rats, roof rats and house mice cease feeding after consuming a toxic dose.

ACTIVE INGREDIENT

Bromethalin (CAS # 63333-35-7)	0.01%
OTHER INGREDIENTS†	99.99%
TOTAL	100.00%

†Contains Denatonium Benzoate

EPA REG. NO. 12455-151

EPA EST. NO. 12455-WI-1^k
EPA EST. NO. 12455-WI-2^p
EPA EST. NO. 12455-WI-3^w
[superscript is first letter of lot number]

**KEEP OUT OF REACH OF CHILDREN
CAUTION**

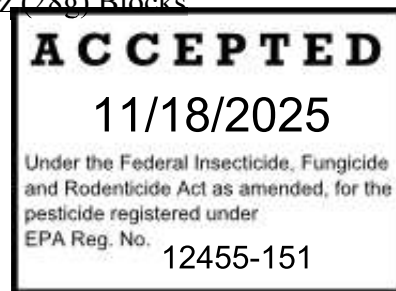
NET CONTENTS: 121 x .53 oz (15 g) Blocks to 1510 x .53 oz (15 g) Blocks
Alternate Sizes 64 x 1.0 oz (28g) Blocks to 800 x 1.0 oz (28g) Blocks

NET WEIGHT: 4 to 50 lbs (1.81 – 22.68 kg)

Manufactured By:



Bell Laboratories, Inc.
3699 Kinsman Blvd.
Madison, WI 53704



Batch Code:

See back [bottom] [and] [side] panel[s] for
First Aid, additional Precautionary Statements, and Directions for Use.

Bold, italicized text is information for the reader and is not part of the label.

[Bracketed information is optional text.]

Text separated by / denotes and/or options.

*Not permitted for use against the following species in California: Cotton rat, Eastern harvest mouse, Golden mouse, Polynesian rat, Meadow vole, White-throated woodrat, Southern plains woodrat, and Mexican woodrat.

FIRST AID	
HAVE LABEL WHEN OBTAINING TREATMENT ADVICE	
If Swallowed:	<ul style="list-style-type: none">• Call a poison control center, doctor, or 1-877-854-2494 immediately for treatment advice.• Have person sip a glass of water if able to swallow.• Do not induce vomiting unless told to do so by the poison control center or doctor.• Do not give anything by mouth to an unconscious person.
TREATMENT FOR PET POISONING	
If an animal eats this bait, call a veterinarian or 1-877-854-2494 at once.	
NOTE TO PHYSICIAN OR VETERINARIAN	
Contains the nerve poison bromethalin. This product is not an anticoagulant type rodenticide. For humans or animals ingesting bait and/or showing poisoning signs (such as muscle tremors, loss of hind limb use, or seizures for animals), limit absorption by either emesis or gastric lavage. Sublethal symptoms, if present, would be the result of cerebral edema and should be treated accordingly through administration of an osmotic diuretic and corticosteroid.	

PRECAUTIONARY STATEMENTS

Hazards to Humans and Domestic Animals

CAUTION: Harmful if swallowed. Keep away from children, domestic animals and pets.

All handlers (including applicators) must wear shoes plus socks, and waterproof gloves. Any person who retrieves carcasses or unused bait following application of this product must wear waterproof gloves.

User Safety Requirements

Follow manufacturer's instructions for cleaning/maintaining PPE. If no such instructions for washables exist, use detergent and hot water. Keep and wash PPE separately from other laundry. Remove Clothing/PPE immediately if pesticide gets inside. Then wash thoroughly and put on clean clothing. Remove PPE immediately after handling this product. Wash the outside of gloves before removing them. As soon as possible, wash hands thoroughly after applying bait and before eating, drinking, chewing gum, using tobacco or using the toilet and change into clean clothing.

ENVIRONMENTAL HAZARDS

This product is extremely toxic to mammals and birds. Dogs and other predatory and scavenging mammals and birds might be poisoned if they feed upon animals that have eaten this bait. Do not apply directly to water, or to areas where surface water is present or to intertidal areas below the mean high water mark. Runoff also may be hazardous to aquatic organisms in water adjacent to treated areas. Do not contaminate water when disposing of equipment wash water or rinsate.

Bold, italicized text is information for the reader and is not part of the label.

[Bracketed information is optional text.]

Text separated by / denotes and/or options.

DIRECTIONS FOR USE

It is a violation of Federal law to use this product in a manner inconsistent with its labeling.

READ THIS LABEL: Read this entire label and follow all use directions and use precautions. Use only for the sites, pests, and application methods described on this label.

IMPORTANT: Do not expose children, pets, or nontarget animals to rodenticides. To help prevent exposure:

1. Store unused product out of reach of children and pets.
2. Apply bait in locations out of reach of children, pets, domestic animals and nontarget wildlife, or in tamper-resistant bait stations. These stations must be resistant to destruction by dogs and by children under six years of age, and must be used in a manner that prevents such children from reaching into bait compartments and obtaining bait. If bait can be shaken from bait stations when they are lifted, units must be secured or otherwise immobilized. Stronger bait stations are needed in areas open to hooved livestock, raccoons, bears or other potentially destructive animals, or in areas prone to vandalism.
3. Dispose of product container and unused, spoiled or unconsumed bait as specified on this label.

Bait stations are mandatory for outdoor, above-ground use. Tamper-resistant bait stations must be used wherever children, pets, non-target mammals or birds may have access to the bait placement location.

USE RESTRICTIONS: This product may only be used to control the following rodent pests in and around man-made structures: House mouse (*Mus musculus*), Norway rat (*Rattus norvegicus*), Roof rat (*Rattus rattus*), Cotton rat* (*Sigmodon hispidus*), Eastern harvest mouse* (*Reithrodontomys humuli*), Golden mouse* (*Ochrotomys nuttalli*), Polynesian rat* (*Rattus exulans*), Meadow vole* (*Microtus pennsylvanicus*), White-throated woodrat* (*Neotoma albigula*), Southern plains woodrat* (*Neotoma micropus*), and Mexican woodrat* (*Neotoma mexicana*). This product must be used in and within 100 feet of man-made structures constructed in a manner so as to be vulnerable to commensal rodent invasions and/or to harboring or attracting rodent infestations. Examples of such structures include homes and other permanent or temporary residences, food processing facilities, industrial and commercial buildings, trash receptacles, agricultural and public buildings, transport vehicles (ships, trains, aircraft), docks and port or terminal buildings and related structures around and associated with these sites. Fence and perimeter baiting, beyond 100 feet from a structure as defined above, is prohibited. This product must not be applied directly to food or feed crops.

Burrow baiting with Contrac® California Bromethalin Blox [This Product] is prohibited.

Do not place bait near or inside ventilation duct openings. Do not contaminate water, food, feedstuffs, food or feed handling equipment, or milk or meat handling equipment or surfaces that come into direct contact with food. When used in USDA inspected facilities, this product must be applied in tamper-resistant bait stations. Do not broadcast bait.

Do not sell this product in individual containers holding less than 4 pounds of bait.

Bold, italicized text is information for the reader and is not part of the label.

[Bracketed information is optional text.]

Text separated by / denotes and/or options.

SELECTION OF TREATMENT AREAS:

Determine areas where rats, mice or meadow voles* will most likely find and consume the bait. Generally, these areas are along walls, by gnawed openings, in corners and concealed places, between floors and walls, or in locations where signs of rodents have been seen. Protect bait from rain and snow. Remove as much alternative food as possible.

APPLICATION DIRECTIONS:

Application Directions for 1.0 oz. (28 g)

Rats:

Place 1 to 6 Blocks per placement (usually at intervals of 15- to 30- feet). Adjust the amount of bait applied to the level of rat feeding expected at each bait placement.

Sewers (for Rat Control Only):

For use in sewers, thread wire through block and securely attach to a stationary structure such as the bottom step of a manhole ladder or a sewer grate. Allow just enough wire for the block to rest on manhole benching. If benching is not present, suspend block a few inches above the high water mark or secure block on a board supported by opposing steps of the ladder. Securing block in this manner may inhibit removal by rats or water. Use at least 15 Blocks per manhole. Maintain an uninterrupted supply of fresh bait for at least 10 days or until there no longer are fresh signs of rat activity.

Mice and Meadow Voles*:

Use 1 Block per placement. Space placements at intervals of 8- to 12- feet in infested areas. Larger placements, up to 2 Blocks, may be needed at points of extremely high mouse or meadow vole* activity.

Application Directions for 0.53 oz. (15 g)

Rats:

Place 2 to 12 Blocks per placement (usually at intervals of 15- to 30- feet). Adjust the amount of bait applied to the level of rat feeding expected at each bait placement.

Sewers (for Rat Control Only):

For use in sewers, thread wire through block and securely attach to a stationary structure such as the bottom step of a manhole ladder or a sewer grate. Allow just enough wire for the block to rest on manhole benching. If benching is not present, suspend block a few inches above the high water mark or secure block on a board supported by opposing steps of the ladder. Securing block in this manner may inhibit removal by rats or water. Use at least 15 Blocks per manhole. Maintain an uninterrupted supply of fresh bait for at least 10 days or until there no longer are fresh signs of rat activity.

Mice and Meadow Voles*:

Use 1 Block per placement. Space placements at intervals of 8- to 12- feet in infested areas. Larger placements, up to 2 Blocks, may be needed at points of extremely high mouse or meadow vole* activity.

Baiting Strategy:

Bold, italicized text is information for the reader and is not part of the label.

[Bracketed information is optional text.]

Text separated by / denotes and/or options.

Highest bait consumption is expected to occur on the first day or two after treatment begins. After several days, inspect the placement and replenish bait at sites where there is evidence of heavy feeding or where there is continued evidence of rodent activity.

Normally, the volume of bait consumed will be significantly less with bromethalin baits than with anticoagulant baits. Although one night's feeding will usually provide a lethal dose, maintain bait for at least one week to provide all rodents a chance to feed on the bait. Continue baiting until all signs of feeding have ceased.

FOLLOW-UP:

Replace contaminated or spoiled bait immediately. Using waterproof gloves, collect and properly dispose of all dead, exposed animals and leftover bait. To discourage reinfestation, limit sources of rodent food, water, and harborage as much as possible. If reinfestation does occur, repeat treatment. Where a continuous source of infestation is present, establish permanent bait stations and replenish them as needed.

STORAGE AND DISPOSAL

Do not contaminate water, food or feed by storage or disposal.

Pesticide Storage: Store only in original container in a cool, dry place inaccessible to children and pets. Keep containers closed and away from other chemicals.

Pesticide Disposal: Wastes resulting from the use of this product may be placed in trash or delivered to an approved waste disposal facility.

Container Handling: Nonrefillable container. Do not reuse or refill this container. Offer for recycling, if available. Dispose of empty container by placing in trash, at an approved disposal facility or by incineration.

WARRANTY: To the extent consistent with applicable law, seller makes no warranty, expressed or implied, concerning the use of this product other than indicated on the label. Buyer assumes all risk of use and/or handling of this material when such use and/or handling is contrary to label instructions.

Bold, italicized text is information for the reader and is not part of the label.

[Bracketed information is optional text.]

Text separated by / denotes and/or options.

OPTIONAL MARKETING STATEMENTS:

Norway Rats, Roof Rats and House Mice usually consume a lethal dose in a single night's feeding but it may take two or more days from time of consumption for them to die.

All-Weather Blocks[Formulation]

All-Weather Formula [Formulation]

Bait easily Secured Inside Station

Blocks

Bromethalin

Can be Used Indoors or [&][and] Out

Can be Used in Protecta[®] [Tomcat[®]] Bait Stations

Contains [Made With] Bromethalin

Designed to be Used Indoors or [&][and] Out

Designed to be Used in Protecta[®] [Tomcat[®]] Bait Stations

Farm and [&] Home Use

For Farm and [&] Home Use

For Indoor and [&] Outdoor Use

For Use Indoors and [&] Outdoors

For Use In and [&] Around Homes and Buildings

For Use In and [&] Around Agricultural Buildings

For Use In and [&] Around Agricultural Buildings & Homes

Indigo Bait [Color]

Indigo [Colored] Bait

Indoor and Outdoor Use

Kills Anticoagulant Resistant Norway Rats, Roof Rats and House Mice

Kills Listed Rodent Species

Kills Meadow Voles*[Mice][Rats]

Kills Rats, Mice and Meadow Voles*

Made in USA

Mice [Rats] cease feeding after consuming a toxic dose

Mice [Rats] Usually Consume a Lethal Dose in a Single Night's Feeding

Meadow Vole*[Mouse][Rat] Killer

Multi-Edge Shape Gives Rodents Gnawing Edges

Palatable Formula [Formulation]

Rats and [&] Mice cease feeding after consuming a toxic dose

Rats and [&] Mice Usually Consume a Lethal Dose in a Single Night's Feeding

Rat, Mouse and Meadow Vole* Killer

Ready-To-Use 0.53 oz. (15 g) Block

Rats and Mice Usually Consume a Lethal Dose in a Single Night's Feeding

▲BELL LABORATORIES, INC. GUARANTEE:

If for any reason you, the consumer, are not satisfied with this product, mail us your original proof of purchase to obtain a full refund of your purchase price."

Note to PM: This disclaimer will be placed in the same vicinity of the packaging as the optional marketing claim it supports.

Vibrant Indigo Bait [Color]

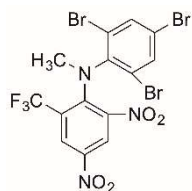
Vibrant Indigo [Colored] Bait

Bold, italicized text is information for the reader and is not part of the label.

[Bracketed information is optional text.]

Text separated by / denotes and/or options.

OPTIONAL GRAPHICS:



[Image of Bromethalin Structure]

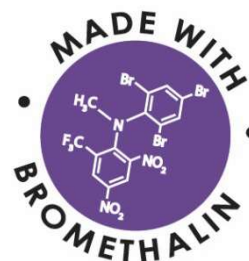


Photo may not be representative of a label-consistent bait placement



Photo may not be representative of a label-consistent bait placement



Photo may not be representative of a label-consistent bait placement



Bold, italicized text is information for the reader and is not part of the label.

[Bracketed information is optional text.]

Text separated by / denotes and/or options.