



UNITED STATES ENVIRONMENTAL PROTECTION AGENCY
WASHINGTON, DC 20460

OFFICE OF CHEMICAL SAFETY
AND POLLUTION PREVENTION

December 4, 2019

Jennifer J. Klika
Regulatory Affairs Manager
Bell Laboratories, Inc.
3699 Kinsman Blvd.
Madison, WI 53704

Subject: Label and CSF Amendment – Revision of Basic CSF certified limits, addition of Alternate CSF 1 to add previously reviewed inert requiring efficacy data, and add Bell guarantee to label

Product Name: F-Trac II All-Weather Blox
EPA Registration Number: 12455-150
Application Date: 10/11/2019
Decision Number: 556978

Dear Ms. Klika:

The amended label and CSFs referred to above, submitted in connection with registration under the Federal Insecticide, Fungicide and Rodenticide Act, as amended, are acceptable. This approval does not affect any conditions that were previously imposed on this registration. You continue to be subject to existing conditions on your registration and any deadlines connected with them.

A stamped copy of your labeling is enclosed for your records. This labeling supersedes all previously accepted labeling. You must submit one copy of the final printed labeling before you release the product for shipment with the new labeling. In accordance with 40 CFR 152.130(c), you may distribute or sell this product under the previously approved labeling for 18 months from the date of this letter. After 18 months, you may only distribute or sell this product if it bears this new revised labeling or subsequently approved labeling. "To distribute or sell" is defined under FIFRA section 2(gg) and its implementing regulation at 40 CFR 152.3.

Please note that the record for this product currently contains the following CSFs:

- Basic CSF dated 10/11/2019
- Alternate CSF 1 dated 10/11/2019

Should you wish to add/retain a reference to the company's website on your label, then please be aware that the website becomes labeling under the Federal Insecticide Fungicide and Rodenticide Act and is subject to review by the Agency. If the website is false or misleading, the product would be misbranded and unlawful to sell or distribute under FIFRA section 12(a)(1)(E). 40 CFR 156.10(a)(5) list examples of statements EPA may consider false or misleading. In addition,

Page 2 of 2
EPA Reg. No. 12455-150
Decision No. 556978

regardless of whether a website is referenced on your product's label, claims made on the website may not substantially differ from those claims approved through the registration process. Therefore, should the Agency find or if it is brought to our attention that a website contains false or misleading statements or claims substantially differing from the EPA approved registration, the website will be referred to the EPA's Office of Enforcement and Compliance.

Your release for shipment of the product constitutes acceptance of these conditions. If these conditions are not complied with, the registration will be subject to cancellation in accordance with FIFRA section 6. If you have any questions, please contact Paul Di Salvo by phone at 703-347-0322, or via email at disalvo.paul@epa.gov.

Sincerely,

A handwritten signature in black ink that reads "Paul Di Salvo" followed by a small "for" in a cursive script.

Venus Eagle, Product Manager 01
Invertebrate and Vertebrate Branch 3
Registration Division (7505P)
Office of Pesticide Programs

Enclosure: Stamped Label

F-Trac[®] II All-Weather Blox^{**}

[Alternate Brand Name] **Fastrac[®] II Blox^{**}**

[Qualifier statement immediately following brand name] ****Norway rats, Roof rats and House mice usually consume a lethal dose in a single night's feeding, but it may take two or more days from the time of bait consumption for these rodents to die.**

Mold Resistant

Moisture Resistant

This Product May Only be Used Inside and Within 100 Feet of Man-made Structures

KILLS RATS, MICE, AND MEADOW VOLES*

**KILLS ANTICOAGULANT RESISTANT NORWAY RATS,
ROOF RATS AND HOUSE MICE**

Norway rats, roof rats and house mice cease feeding after consuming a toxic dose.

ACTIVE INGREDIENT

Bromethalin (CAS # 63333-35-7) 0.01%

OTHER INGREDIENTS† 99.99%

TOTAL **100.00%**

†Contains Denatonium Benzoate

EPA REG. NO. 12455-150

EPA EST. NO. 12455-WI-1^k

EPA EST. NO. 12455-WI-2^p

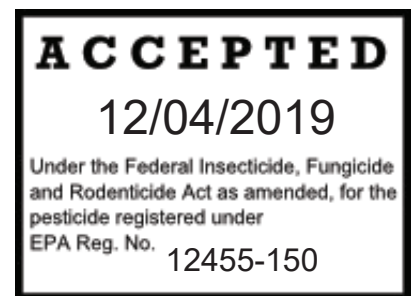
EPA EST. NO. 12455-WI-3^w

[superscript is first letter of lot number]

**KEEP OUT OF REACH OF CHILDREN
CAUTION**

NET CONTENTS: 32 x .52 oz (15 g) Blocks
to
100 x .52 oz (15 g) Blocks

NET WEIGHT: 4 to 50 lbs (1.81 – 22.68 kg)



Manufactured By:



Bell Laboratories, Inc.
3699 Kinsman Blvd.
Madison, WI 53704

Batch Code:

See back [bottom] [and] [side] panel[s] for
First Aid, additional Precautionary Statements, and Directions for Use.

*Not permitted for use against the following species in California: Cotton rat, Eastern harvest mouse, Golden mouse, Polynesian rat, Meadow vole, White-throated woodrat, Southern plains woodrat, and Mexican woodrat.

Bold, italicized text is information for the reader and is not part of the label.

[Bracketed information is optional text.]

Text separated by / denotes and/or options.

FIRST AID HAVE LABEL WHEN OBTAINING TREATMENT ADVICE	
If Swallowed:	<ul style="list-style-type: none">• Call a poison control center, doctor, or 1-877-854-2494 immediately for treatment advice.• Have person sip a glass of water if able to swallow.• Do not induce vomiting unless told to do so by the poison control center or doctor.• Do not give anything by mouth to an unconscious person.
TREATMENT FOR PET POISONING If an animal eats this bait, call a veterinarian or 1-877-854-2494 at once.	
NOTE TO PHYSICIAN OR VETERINARIAN Contains the nerve poison bromethalin. This product is not an anticoagulant type rodenticide. For humans or animals ingesting bait and/or showing poisoning signs (such as muscle tremors, loss of hind limb use, or seizures for animals), limit absorption by either emesis or gastric lavage. Sublethal symptoms, if present, would be the result of cerebral edema and should be treated accordingly through administration of an osmotic diuretic and corticosteroid.	

PRECAUTIONARY STATEMENTS

Hazards to Humans and Domestic Animals

CAUTION: Harmful if swallowed. Keep away from children, domestic animals and pets.

All handlers (including applicators) must wear shoes plus socks, and waterproof gloves. Any person who retrieves carcasses or unused bait following application of this product must wear waterproof gloves.

User Safety Requirements

Follow manufacturer's instructions for cleaning/maintaining PPE. If no such instructions for washables exist, use detergent and hot water. Keep and wash PPE separately from other laundry. Remove PPE immediately after handling this product. Wash the outside of gloves before removing them. As soon as possible, wash hands thoroughly after applying bait and before eating, drinking, chewing gum, using tobacco or using the toilet and change into clean clothing.

ENVIRONMENTAL HAZARDS

This product is extremely toxic to mammals and birds. Dogs and other predatory and scavenging mammals and birds might be poisoned if they feed upon animals that have eaten this bait. Do not apply directly to water, or to areas where surface water is present or to intertidal areas below the mean high water mark. Runoff also may be hazardous to aquatic organisms in water adjacent to treated areas. Do not contaminate water when disposing of equipment wash water or rinsate.

Bold, italicized text is information for the reader and is not part of the label.

[Bracketed information is optional text.]

Text separated by / denotes and/or options.

DIRECTIONS FOR USE

It is a violation of Federal law to use this product in a manner inconsistent with its labeling.

READ THIS LABEL: Read this entire label and follow all use directions and use precautions. Use only for the sites, pests, and application methods described on this label.

IMPORTANT: Do not expose children, pets, or nontarget animals to rodenticides. To help prevent exposure:

1. Store unused product out of reach of children and pets.
2. Apply bait in locations out of reach of children, pets, domestic animals and nontarget wildlife, or in tamper-resistant bait stations. These stations must be resistant to destruction by dogs and by children under six years of age, and must be used in a manner that prevents such children from reaching into bait compartments and obtaining bait. If bait can be shaken from bait stations when they are lifted, units must be secured or otherwise immobilized. Stronger bait stations are needed in areas open to hooved livestock, raccoons, bears or other potentially destructive animals, or in areas prone to vandalism.
3. Dispose of product container and unused, spoiled or unconsumed bait as specified on this label.

Bait stations are mandatory for outdoor, above-ground use. Tamper-resistant bait stations must be used wherever children, pets, non-target mammals or birds may have access to the bait placement location.

USE RESTRICTIONS: This product may only be used to control the following rodent pests in and around man-made structures: House mouse (*Mus musculus*), Norway rat (*Rattus norvegicus*), Roof rat (*Rattus rattus*), Cotton rat* (*Sigmodon hispidus*), Eastern harvest mouse* (*Reithrodontomys humuli*), Golden mouse* (*Ochrotomys nuttalli*), Polynesian rat* (*Rattus exulans*), Meadow vole* (*Microtus pennsylvanicus*), White-throated woodrat* (*Neotoma albigula*), Southern plains woodrat* (*Neotoma micropus*), and Mexican woodrat* (*Neotoma mexicana*). This product must be used in and within 100 feet of man-made structures constructed in a manner so as to be vulnerable to commensal rodent invasions and/or to harboring or attracting rodent infestations. Examples of such structures include homes and other permanent or temporary residences, food processing facilities, industrial and commercial buildings, trash receptacles, agricultural and public buildings, transport vehicles (ships, trains, aircraft), docks and port or terminal buildings and related structures around and associated with these sites. Fence and perimeter baiting, beyond 100 feet from a structure as defined above, is prohibited. This product must not be applied directly to food or feed crops.

Burrow baiting with F-Trac[®] II All-Weather Blox [This Product] is prohibited.

Do not place bait near or inside ventilation duct openings. Do not contaminate water, food, feedstuffs, food or feed handling equipment, or milk or meat handling equipment or surfaces that come into direct contact with food. When used in USDA inspected facilities, this product must be applied in tamper-resistant bait stations. Do not broadcast bait.

Do not sell this product in individual containers holding less than 4 pounds of bait.

Bold, italicized text is information for the reader and is not part of the label.

[Bracketed information is optional text.]

Text separated by / denotes and/or options.

SELECTION OF TREATMENT AREAS: Determine areas where rats, mice or meadow voles* will most likely find and consume the bait. Generally, these areas are along walls, by gnawed openings, in corners and concealed places, between floors and walls, or in locations where signs of rodents have been seen. Protect bait from rain and snow. Remove as much alternative food as possible.

APPLICATION DIRECTIONS:

Rats:

Place 2 to 12 Blocks per placement (usually at intervals of 15- to 30- feet). Adjust the amount of bait applied to the level of rat feeding expected at each bait placement.

Sewers (for Rat Control Only):

For use in sewers, thread wire through block and securely attach to a stationary structure such as the bottom step of a manhole ladder or a sewer grate. Allow just enough wire for the block to rest on manhole benching. If benching is not present, suspend block a few inches above the high water mark or secure block on a board supported by opposing steps of the ladder. Securing block in this manner may inhibit removal by rats or water. Use at least 15 Blocks per manhole. Maintain an uninterrupted supply of fresh bait for at least 10 days or until there no longer are fresh signs of rat activity.

Mice and Meadow Voles*:

Use 1 Block per placement. Space placements at intervals of 8- to 12- feet in infested areas. Larger placements, up to 2 Blocks, may be needed at points of extremely high mouse or meadow vole* activity.

Baiting Strategy:

Highest bait consumption is expected to occur on the first day or two after treatment begins. After several days, inspect the placement and replenish bait at sites where there is evidence of heavy feeding or where there is continued evidence of rodent activity.

Normally, the volume of bait consumed will be significantly less with bromethalin baits than with anticoagulant baits. Although one night's feeding will usually provide a lethal dose, maintain bait for at least one week to provide all rodents a chance to feed on the bait. Continue baiting until all signs of feeding have ceased.

FOLLOW-UP:

Replace contaminated or spoiled bait immediately. Using waterproof gloves, collect and properly dispose of all dead, exposed animals and leftover bait. To discourage reinfestation, limit sources of rodent food, water, and harborage as much as possible. If reinfestation does occur, repeat treatment. Where a continuous source of infestation is present, establish permanent bait stations and replenish them as needed.

Bold, italicized text is information for the reader and is not part of the label.

[Bracketed information is optional text.]

Text separated by / denotes and/or options.

STORAGE AND DISPOSAL

Do not contaminate water, food or feed by storage or disposal.

Pesticide Storage: Store only in original container in a cool, dry place inaccessible to children and pets. Keep containers closed and away from other chemicals.

Pesticide Disposal: Wastes resulting from the use of this product may be placed in trash or delivered to an approved waste disposal facility.

Container Handling: Nonrefillable container. Do not reuse or refill this container. Offer for recycling, if available. Dispose of empty container by placing in trash, at an approved disposal facility or by incineration.

WARRANTY: To the extent consistent with applicable law, seller makes no warranty, expressed or implied, concerning the use of this product other than indicated on the label. Buyer assumes all risk of use and/or handling of this material when such use and/or handling is contrary to label instructions.

Bold, italicized text is information for the reader and is not part of the label.

[Bracketed information is optional text.]

Text separated by / denotes and/or options.

OPTIONAL MARKETING STATEMENTS:

Norway Rats, Roof Rats and House Mice usually consume a lethal dose in a single night's feeding but it may take two or more days from time of consumption for them to die.

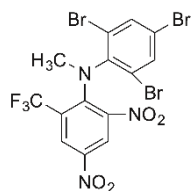
All-Weather [Blocks]	Kills Rats, Mice and Meadow Voles*
All-Weather Formula [Formulation]	Made in USA
Bait easily Secured Inside Station	Mice [Rats] cease feeding after consuming a toxic dose
Blocks	Mice [Rats] Usually Consume a Lethal Dose in a Single Night's Feeding
Bromethalin	Meadow Vole*[Mouse][Rat] Killer
Can be Used Indoors or [&][and] Out	Multi-Edge Shape Gives Rodents Gnawing Edges
Can be Used in Protecta® [Tomcat®] Bait Stations	Palatable Formula [Formulation]
Contains [With] Bromethalin	Purple Bait [Color]
Designed to be Used Indoors or [&][and] Out	Purple [Colored] Bait
Designed to be Used in Protecta® [Tomcat®] Bait Stations	Rats and [&] Mice cease feeding after consuming a toxic dose
Farm and [&] Home Use	Rats and [&] Mice Usually Consume a Lethal Dose in a Single Night's Feeding
For Farm and [&] Home Use	Rat, Mouse and Meadow Vole* Killer
For Indoor and [&] Outdoor Use	Ready-To-Use 0.53 oz. (15 g) Block
For Use Indoors and [&] Outdoors	Rats and Mice Usually Consume a Lethal Dose in a Single Night's Feeding
For Use In and [&] Around Homes and Buildings	Results Guaranteed*
For Use In and [&] Around Agricultural Buildings	<i>*BELL LABORATORIES, INC. GUARANTEE: If for any reason you, the consumer, are not satisfied with this product, mail us your original proof of purchase to obtain a full refund of your purchase price.</i>
For Use In and [&] Around Agricultural Buildings & Homes	
Indoor and Outdoor Use	Vibrant Purple Bait [Color]
Kills Anticoagulant Resistant Norway Rats, Roof Rats and House Mice	Vibrant Purple [Colored] Bait
Kills Listed Rodent Species	
Kills Meadow Voles*[Mice][Rats]	

Bold, italicized text is information for the reader and is not part of the label.

[Bracketed information is optional text.]

Text separated by / denotes and/or options.

OPTIONAL GRAPHICS:



[Image of Bromethalin Structure]



Photo may not be representative of a label-consistent bait placement



Photo may not be representative of a label-consistent bait placement



Bold, italicized text is information for the reader and is not part of the label.

[Bracketed information is optional text.]

Text separated by / denotes and/or options.