



U.S. ENVIRONMENTAL PROTECTION AGENCY  
Office of Pesticide Programs  
Registration Division (7505P)  
1200 Pennsylvania Ave., N.W.  
Washington, D.C. 20460

**EPA Reg. Number:**  
12455-150

**Date of Issuance:**  
9/24/19

**NOTICE OF PESTICIDE:**

Registration  
 Reregistration  
(under FIFRA, as amended)

**Term of Issuance:**  
Conditional

**Name of Pesticide Product:**  
F-Trac II All-Weather Blox

**Name and Address of Registrant (include ZIP Code):**

Jennifer J. Klika  
Regulatory Affairs Manager  
Bell Laboratories, Inc.  
3699 Kinsman Blvd.  
Madison, WI 53704

**Note:** Changes in labeling differing in substance from that accepted in connection with this registration must be submitted to and accepted by the Registration Division prior to use of the label in commerce. In any correspondence on this product always refer to the above EPA registration number.

On the basis of information furnished by the registrant, the above named pesticide is hereby registered under the Federal Insecticide, Fungicide and Rodenticide Act.

Registration is in no way to be construed as an endorsement or recommendation of this product by the Agency. In order to protect health and the environment, the Administrator, on his motion, may at any time suspend or cancel the registration of a pesticide in accordance with the Act. The acceptance of any name in connection with the registration of a product under this Act is not to be construed as giving the registrant a right to exclusive use of the name or to its use if it has been covered by others.

This product is conditionally registered in accordance with FIFRA section 3(c)(7)(A). You must comply with the following conditions:

1. Submit and/or cite all data required for registration/reregistration/registration review of your product under FIFRA when the Agency requires all registrants of similar products to submit such data.

**Signature of Approving Official:**

Venus Eagle, Product Manager 01  
Invertebrate and Vertebrate Branch 3, Registration Division (7505P)

**Date:**

9/24/19

2. You are required to comply with the data requirements described in the DCI identified below:
  - a. Bromethalin GDCI-112802-1717

You must comply with all of the data requirements within the established deadlines. If you have questions about the Generic DCI listed above, you may contact the Chemical Review Manager in the Pesticide Reevaluation Division:

<http://iaspub.epa.gov/apex/pesticides/f?p=chemicalsearch:1>

3. Make the following label changes before you release the product for shipment:
  - Revise the EPA Registration Number to read, “EPA Reg. No. 12455-150.”
4. Submit one copy of the final printed label for the record before you release the product for shipment.

Should you wish to add/retain a reference to the company’s website on your label, then please be aware that the website becomes labeling under the Federal Insecticide Fungicide and Rodenticide Act and is subject to review by the Agency. If the website is false or misleading, the product would be misbranded and unlawful to sell or distribute under FIFRA section 12(a)(1)(E). 40 CFR 156.10(a)(5) list examples of statements EPA may consider false or misleading. In addition, regardless of whether a website is referenced on your product’s label, claims made on the website may not substantially differ from those claims approved through the registration process. Therefore, should the Agency find or if it is brought to our attention that a website contains false or misleading statements or claims substantially differing from the EPA approved registration, the website will be referred to the EPA’s Office of Enforcement and Compliance.

If you fail to satisfy these data requirements, EPA will consider appropriate regulatory action including, among other things, cancellation under FIFRA section 6(e). Your release for shipment of the product constitutes acceptance of these conditions. A stamped copy of the label is enclosed for your records. Please also note that the record for this product currently contains the following CSFs:

- Basic CSF dated 07/31/2019

If you have any questions, please contact Paul Di Salvo by phone at 703-347-0322, or via email at [disalvo.paul@epa.gov](mailto:disalvo.paul@epa.gov).

Enclosure

# F-Trac<sup>®</sup> II All-Weather Blox<sup>\*\*</sup>

[Alternate Brand Name] **Fastrac<sup>®</sup> II Blox<sup>\*\*</sup>**

[Qualifier statement immediately following brand name] **\*\*Norway rats, Roof rats and House mice usually consume a lethal dose in a single night's feeding, but it may take two or more days from the time of bait consumption for these rodents to die.**

**Mold Resistant**

**Moisture Resistant**

**This Product May Only be Used Inside and Within 100 Feet of Man-made Structures**

**KILLS RATS, MICE, AND MEADOW VOLES\***

**KILLS ANTICOAGULANT RESISTANT NORWAY RATS,  
ROOF RATS AND HOUSE MICE**

**Norway rats, roof rats and house mice cease feeding after consuming a toxic dose.**

**ACTIVE INGREDIENT**

Bromethalin (CAS # 63333-35-7) ..... 0.01%

**OTHER INGREDIENTS†** ..... 99.99%

**TOTAL** ..... **100.00%**

†Contains Denatonium Benzoate

EPA REG. NO. 12455-150

EPA EST. NO. 12455-WI-1<sup>k</sup>

EPA EST. NO. 12455-WI-2<sup>p</sup>

EPA EST. NO. 12455-WI-3<sup>w</sup>

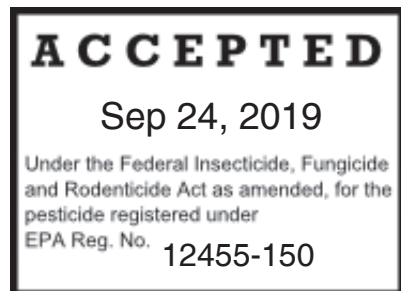
[superscript is first letter of lot number]

**KEEP OUT OF REACH OF CHILDREN**

**CAUTION**

**NET CONTENTS:** 32 x .52 oz (15 g) Blocks  
to  
100 x .52 oz (15 g) Blocks

**NET WEIGHT:** 4 to 50 lbs (1.81 – 22.68 kg)



**Manufactured By:**



**Bell Laboratories, Inc.**  
3699 Kinsman Blvd.  
Madison, WI 53704

**Batch Code:**

See back [bottom] [and] [side] panel[s] for  
First Aid, additional Precautionary Statements, and Directions for Use.

\*Not permitted for use against the following species in California: Cotton rat, Eastern harvest mouse, Golden mouse, Polynesian rat, Meadow vole, White-throated woodrat, Southern plains woodrat, and Mexican woodrat.

***Bold, italicized text is information for the reader and is not part of the label.***

[Bracketed information is optional text.]

Text separated by / denotes and/or options.

<b>FIRST AID</b> <b>HAVE LABEL WHEN OBTAINING TREATMENT ADVICE</b>	
<b>If Swallowed:</b>	<ul style="list-style-type: none"><li>• Call a poison control center, doctor, or <b>1-877-854-2494</b> immediately for treatment advice.</li><li>• Have person sip a glass of water if able to swallow.</li><li>• Do not induce vomiting unless told to do so by the poison control center or doctor.</li><li>• Do not give anything by mouth to an unconscious person.</li></ul>
<b>TREATMENT FOR PET POISONING</b> If an animal eats this bait, call a veterinarian or <b>1-877-854-2494</b> at once.	
<b>NOTE TO PHYSICIAN OR VETERINARIAN</b> Contains the nerve poison bromethalin. This product is not an anticoagulant type rodenticide. For humans or animals ingesting bait and/or showing poisoning signs (such as muscle tremors, loss of hind limb use, or seizures for animals), limit absorption by either emesis or gastric lavage. Sublethal symptoms, if present, would be the result of cerebral edema and should be treated accordingly through administration of an osmotic diuretic and corticosteroid.	

### **PRECAUTIONARY STATEMENTS**

#### **Hazards to Humans and Domestic Animals**

**CAUTION:** Harmful if swallowed. Keep away from children, domestic animals and pets.

All handlers (including applicators) must wear shoes plus socks, and waterproof gloves. Any person who retrieves carcasses or unused bait following application of this product must wear waterproof gloves.

#### **User Safety Requirements**

Follow manufacturer's instructions for cleaning/maintaining PPE. If no such instructions for washables exist, use detergent and hot water. Keep and wash PPE separately from other laundry. Remove PPE immediately after handling this product. Wash the outside of gloves before removing them. As soon as possible, wash hands thoroughly after applying bait and before eating, drinking, chewing gum, using tobacco or using the toilet and change into clean clothing.

### **ENVIRONMENTAL HAZARDS**

This product is extremely toxic to mammals and birds. Dogs and other predatory and scavenging mammals and birds might be poisoned if they feed upon animals that have eaten this bait. Do not apply directly to water, or to areas where surface water is present or to intertidal areas below the mean high water mark. Runoff also may be hazardous to aquatic organisms in water adjacent to treated areas. Do not contaminate water when disposing of equipment wash water or rinsate.

***Bold, italicized text is information for the reader and is not part of the label.***

[Bracketed information is optional text.]

Text separated by / denotes and/or options.

## DIRECTIONS FOR USE

It is a violation of Federal law to use this product in a manner inconsistent with its labeling.

**READ THIS LABEL:** Read this entire label and follow all use directions and use precautions. Use only for the sites, pests, and application methods described on this label.

**IMPORTANT:** Do not expose children, pets, or nontarget animals to rodenticides. To help prevent exposure:

1. Store unused product out of reach of children and pets.
2. Apply bait in locations out of reach of children, pets, domestic animals and nontarget wildlife, or in tamper-resistant bait stations. These stations must be resistant to destruction by dogs and by children under six years of age, and must be used in a manner that prevents such children from reaching into bait compartments and obtaining bait. If bait can be shaken from bait stations when they are lifted, units must be secured or otherwise immobilized. Stronger bait stations are needed in areas open to hooved livestock, raccoons, bears or other potentially destructive animals, or in areas prone to vandalism.
3. Dispose of product container and unused, spoiled or unconsumed bait as specified on this label.

**Bait stations are mandatory for outdoor, above-ground use. Tamper-resistant bait stations must be used wherever children, pets, non-target mammals or birds may have access to the bait placement location.**

**USE RESTRICTIONS:** This product may only be used to control the following rodent pests in and around man-made structures: House mouse (*Mus musculus*), Norway rat (*Rattus norvegicus*), Roof rat (*Rattus rattus*), Cotton rat\* (*Sigmodon hispidus*), Eastern harvest mouse\* (*Reithrodontomys humuli*), Golden mouse\* (*Ochrotomys nuttalli*), Polynesian rat\* (*Rattus exulans*), Meadow vole\* (*Microtus pennsylvanicus*), White-throated woodrat\* (*Neotoma albigula*), Southern plains woodrat\* (*Neotoma micropus*), and Mexican woodrat\* (*Neotoma mexicana*). This product must be used in and within 100 feet of man-made structures constructed in a manner so as to be vulnerable to commensal rodent invasions and/or to harboring or attracting rodent infestations. Examples of such structures include homes and other permanent or temporary residences, food processing facilities, industrial and commercial buildings, trash receptacles, agricultural and public buildings, transport vehicles (ships, trains, aircraft), docks and port or terminal buildings and related structures around and associated with these sites. Fence and perimeter baiting, beyond 100 feet from a structure as defined above, is prohibited. This product must not be applied directly to food or feed crops.

Burrow baiting with F-Trac<sup>®</sup> II All-Weather Blox [This Product] is prohibited.

Do not place bait near or inside ventilation duct openings. Do not contaminate water, food, feedstuffs, food or feed handling equipment, or milk or meat handling equipment or surfaces that come into direct contact with food. When used in USDA inspected facilities, this product must be applied in tamper-resistant bait stations. Do not broadcast bait.

Do not sell this product in individual containers holding less than 4 pounds of bait.

***Bold, italicized text is information for the reader and is not part of the label.***

[Bracketed information is optional text.]

Text separated by / denotes and/or options.

**SELECTION OF TREATMENT AREAS:** Determine areas where rats, mice or meadow voles\* will most likely find and consume the bait. Generally, these areas are along walls, by gnawed openings, in corners and concealed places, between floors and walls, or in locations where signs of rodents have been seen. Protect bait from rain and snow. Remove as much alternative food as possible.

**APPLICATION DIRECTIONS:**

**Rats:**

Place 2 to 12 Blocks per placement (usually at intervals of 15- to 30- feet). Adjust the amount of bait applied to the level of rat feeding expected at each bait placement.

**Sewers (for Rat Control Only):**

For use in sewers, thread wire through block and securely attach to a stationary structure such as the bottom step of a manhole ladder or a sewer grate. Allow just enough wire for the block to rest on manhole benching. If benching is not present, suspend block a few inches above the high water mark or secure block on a board supported by opposing steps of the ladder. Securing block in this manner may inhibit removal by rats or water. Use at least 15 Blocks per manhole. Maintain an uninterrupted supply of fresh bait for at least 10 days or until there no longer are fresh signs of rat activity.

**Mice and Meadow Voles\*:**

Use 1 Block per placement. Space placements at intervals of 8- to 12- feet in infested areas. Larger placements, up to 2 Blocks, may be needed at points of extremely high mouse or meadow vole\* activity.

**Baiting Strategy:**

Highest bait consumption is expected to occur on the first day or two after treatment begins. After several days, inspect the placement and replenish bait at sites where there is evidence of heavy feeding or where there is continued evidence of rodent activity.

Normally, the volume of bait consumed will be significantly less with bromethalin baits than with anticoagulant baits. Although one night's feeding will usually provide a lethal dose, maintain bait for at least one week to provide all rodents a chance to feed on the bait. Continue baiting until all signs of feeding have ceased.

**FOLLOW-UP:**

Replace contaminated or spoiled bait immediately. Using waterproof gloves, collect and properly dispose of all dead, exposed animals and leftover bait. To discourage reinfestation, limit sources of rodent food, water, and harborage as much as possible. If reinfestation does occur, repeat treatment. Where a continuous source of infestation is present, establish permanent bait stations and replenish them as needed.

***Bold, italicized text is information for the reader and is not part of the label.***

[Bracketed information is optional text.]

Text separated by / denotes and/or options.

### **STORAGE AND DISPOSAL**

Do not contaminate water, food or feed by storage or disposal.

**Pesticide Storage:** Store only in original container in a cool, dry place inaccessible to children and pets. Keep containers closed and away from other chemicals.

**Pesticide Disposal:** Wastes resulting from the use of this product may be placed in trash or delivered to an approved waste disposal facility.

**Container Handling:** Nonrefillable container. Do not reuse or refill this container. Offer for recycling, if available. Dispose of empty container by placing in trash, at an approved disposal facility or by incineration.

**WARRANTY:** To the extent consistent with applicable law, seller makes no warranty, expressed or implied, concerning the use of this product other than indicated on the label. Buyer assumes all risk of use and/or handling of this material when such use and/or handling is contrary to label instructions.

***Bold, italicized text is information for the reader and is not part of the label.***

[Bracketed information is optional text.]

Text separated by / denotes and/or options.

**OPTIONAL MARKETING STATEMENTS:**

Norway Rats, Roof Rats and House Mice usually consume a lethal dose in a single night's feeding but it may take two or more days from time of consumption for them to die.

All-Weather [Blocks]	Kills Listed Rodent Species
All-Weather Formula [Formulation]	Kills Meadow Voles*[Mice][Rats]
Bait easily Secured Inside Station	Kills Rats, Mice and Meadow Voles*
Blocks	Made in USA
Bromethalin	Mice [Rats] cease feeding after consuming a toxic dose
Can be Used Indoors or [&][and] Out	Mice [Rats] Usually Consume a Lethal Dose in a Single Night's Feeding
Can be Used in Protecta® [Tomcat®] Bait Stations	Meadow Vole*[Mouse][Rat] Killer
Contains[With] Bromethalin	Multi-Edge Shape Gives Rodents Gnawing Edges
Designed to be Used Indoors or [&][and] Out	Palatable Formula [Formulation]
Designed to be Used in Protecta® [Tomcat®] Bait Stations	Purple Bait [Color]
Farm and [&] Home Use	Purple [Colored] Bait
For Farm and [&] Home Use	Rats and [&] Mice cease feeding after consuming a toxic dose
For Indoor and [&] Outdoor Use	Rats and [&] Mice Usually Consume a Lethal Dose in a Single Night's Feeding
For Use Indoors and [&] Outdoors	Rat, Mouse and Meadow Vole* Killer
For Use In and [&] Around Homes and Buildings	Ready-To-Use 0.53 oz. (15 g) Block
For Use In and [&] Around Agricultural Buildings	Rats and Mice Usually Consume a Lethal Dose in a Single Night's Feeding
For Use In and [&] Around Agricultural Buildings & Homes	Vibrant Purple Bait [Color]
Indoor and Outdoor Use	Vibrant Purple [Colored] Bait
Kills Anticoagulant Resistant Norway Rats, Roof Rats and House Mice	

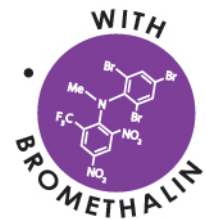
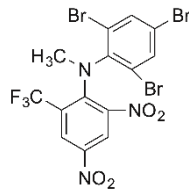
***Bold, italicized text is information for the reader and is not part of the label.***

[Bracketed information is optional text.]

Text separated by / denotes and/or options.



**OPTIONAL GRAPHICS:**



[Image of Bromethalin Structure]



Photo may not be representative of a label-consistent bait placement



Photo may not be representative of a label-consistent bait placement



***Bold, italicized text is information for the reader and is not part of the label.***

[Bracketed information is optional text.]

Text separated by / denotes and/or options.