

12455-138

08/25/2011

1/10



U.S. ENVIRONMENTAL PROTECTION AGENCY
Office of Pesticide Programs
Registration Division (7505P)
Ariel Rios Building
1200 Pennsylvania Ave., NW
Washington, D.C. 20460

EPA Reg. Number: **12455-138**
 Date of Issuance: **AUG 25 2011**

NOTICE OF PESTICIDE:
 Registration
 Reregistration
 (under FIFRA, as amended)

Term of Issuance: **Unconditional**
 Name of Pesticide Product:
TOMCAT MOUSE KILLER
X

Name and Address of Registrant (include ZIP Code):
Bell Laboratories, Inc.
3699 Kinsman Blvd.
Madison, WI 53704

Note: Changes in labeling differing in substance from that accepted in connection with this registration must be submitted to and accepted by the Registration Division prior to use of the label in commerce. In any correspondence on this product always refer to the above EPA registration number.

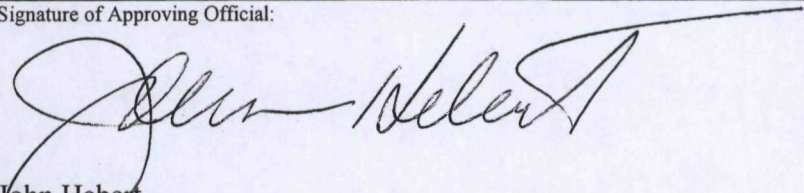
On the basis of information furnished by the registrant, the above named pesticide is hereby registered/reregistered under the Federal Insecticide, Fungicide and Rodenticide Act. Registration is in no way to be construed as an endorsement or recommendation of this product by the Agency. In order to protect health and the environment, the Administrator, on his motion, may at any time suspend or cancel the registration of a pesticide in accordance with the Act. The acceptance of any name in connection with the registration of a product under this Act is not to be construed as giving the registrant a right to exclusive use of the name or to its use if it has been covered by others.

This product is registered in accordance with FIFRA section 3(c)(5) provided that you:

1. Revise the EPA Registration Number to read "EPA Reg. #12455-138".
2. The data requirements for storage stability (830.6317) and corrosion characteristics (830.6320) have not been satisfied, and must be submitted within eighteen (18) months of the date of this letter.
3. Submit two copies of your final printed label before you release the product for shipment.

If these conditions are not complied with, the registration will be subject to cancellation in accordance with FIFRA sec. 6(e). Your release for shipment of the product constitutes acceptance of these conditions. A stamped copy of the label is enclosed for your records.

If you have any questions, please contact Gene Benbow at (703) 347-0235 or via email at benbow.gene@epa.gov.

Signature of Approving Official:

 John Hebert
 Product Manager 07
 Insecticide-Rodenticide Branch
 Registration Division (7505P)

Date:
AUG 25 2011

2/10

OUTER PACKAGE - COMPLETE LABEL

TOMCAT[®] MOUSE KILLER X

KILLS MICE

INCLUDES BAIT BLOCKS

This Bait Station is Resistant to Tampering by Children. Use Indoors Only.

ACTIVE INGREDIENT:

Bromethalin (CAS #63333-35-7): 0.01 %

OTHER INGREDIENTS*:..... 99.99%

100.00%

*Contains Denatonium Benzoate

ACCEPTED
AUG 25 2011
Under the Federal Insecticide,
Fungicide, and Rodenticide Act,
as amended, for the pesticide
Registered under
EPA Reg. No. 12455-138

KEEP OUT OF REACH OF CHILDREN

CAUTION

See right/left/back panels for First Aid and additional precautionary statements.

NET WT:

4 oz. (112g)
8 x 0.5 oz. Block Bait &
1 Refillable Bait Station

to

16 oz. (454g)
32 x 0.5 oz. Block Bait &
1 Refillable Bait Station

Manufactured by:



Bell Laboratories, Inc.
3699 Kinsman Blvd.
Madison, WI 53704

Batch Code:

EPA REG. NO. 12455-xxx

EPA EST. NO. 12455-WI-1

DIRECTIONS FOR USE

It is a violation of Federal law to use this product in a manner inconsistent with its labeling.

READ THIS LABEL: Read this entire label and follow all use directions and use precautions. Use only for the sites, pests and application methods described on this label.

USE RESTRICTIONS:

This bait station may be used in indoor areas accessible to children, consistent with all use restrictions. **DO NOT USE THIS PRODUCT OUTDOORS OR IN AREAS ACCESSIBLE TO PETS.** For control only of house mice in homes. This bait station can only be refilled with the block bait sold with this station. TOMCAT MOUSE KILLER X must be used in homes with all use restrictions and other requirements indicated on this label. Do not place this bait station or stored bait blocks in any area where there is a possibility of contaminating food or surfaces that come into direct contact with food.

SELECTION OF TREATMENT AREAS: Determine areas where house mice will most likely find and consume the bait. Generally, these areas are along walls, by gnawed openings, in corners and concealed places.

APPLICATION DIRECTIONS:

While wearing gloves, place one block of bait in the bait station. See additional GRAPHICS AND TEXT. Place the bait station at highest point of activity along a wall or in corner where mice or their signs have been seen. If additional units are to be used, place bait stations at 8 to 12 foot intervals. While wearing gloves, replace bait in bait station when bait is consumed or contaminated. Maintain an uninterrupted supply of fresh bait for at least 15 days or until signs of mouse activity cease in infested areas.

**LOADING
BAIT INTO
STATION**

**1 REMOVE BAIT CARTRIDGE
FROM BOTTOM OF STATION**

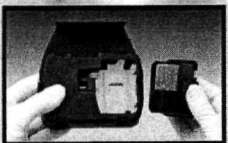


With your left hand push tab up.



While still holding tab, squeeze prongs of bait cartridge and pull away from station.

2 LOAD BAIT



Place bait into cartridge.



Push cartridge into station until it clicks into place.

Follow-up: Wearing gloves, collect and dispose of any leftover bait and dead animals. To discourage reinfestation, eliminate food, water and harborage as much as possible. If reinfestation does occur, repeat treatment.

PRECAUTIONARY STATEMENTS

HAZARDS TO HUMANS AND DOMESTIC ANIMALS

CAUTION: Harmful if swallowed. Keep away from children, domestic animals, and pets. Any person who reloads bait into the station, retrieves carcasses or unused bait following application of this product must wear gloves. Wash hands thoroughly immediately after such activities.

FIRST AID

HAVE LABEL WITH YOU WHEN OBTAINING TREATMENT ADVICE

IF SWALLOWED:

- Call a poison control center, doctor, or 1-877-854-2494. immediately for treatment advice.
- Have person sip a glass of water if able to swallow.
- Do not induce vomiting unless told to do so by the poison control center or doctor.

TREATMENT FOR PET POISONING

If an animal eats this bait, call a veterinarian at once.

NOTE TO PHYSICIAN OR VETERINARIAN

Contains the nerve poison bromethalin. This product is not an anticoagulant type rodenticide. For humans or animals ingesting bait and/or showing poisoning signs (such as muscle tremors, loss of hind limb use, or seizures for animals), limit absorption by either emesis or gastric lavage. Sublethal symptoms, if present, would be the result of cerebral edema and should be treated accordingly through administration of an osmotic diuretic and corticosteroid.

ENVIRONMENTAL HAZARDS

This product is extremely toxic to fish, birds and other wildlife. Dogs, cats and other predatory and scavenging mammals and birds might be poisoned if they feed upon animals that have eaten this bait.

STORAGE AND DISPOSAL

Do not contaminate water, food or feed by storage or disposal.

Pesticide Storage: Store only in original container, in a dry place inaccessible to children and pets. Keep containers closed and away from other chemicals.

Pesticide Disposal and Container Handling: Nonrefillable Container. Do not reuse or refill this container.

If empty: Place in trash or offer for recycling if available.

If partly filled: Call your local solid waste agency for disposal instructions. Never place unused product down any indoor or outdoor drain.

WARRANTY: To the extent consistent with applicable law, seller makes no warranty, expressed or implied, concerning the use of this product other than indicated on the label. Buyer assumes all risk of use and/or handling of this material when such use and/or handling is contrary to label instructions.

8/10

BAIT STATION LABEL

TOMCAT[®] MOUSE KILLER X

This Bait Station is Resistant to Tampering by Children. Use Indoors Only.

ACTIVE INGREDIENT:

Bromethalin (CAS #63333-35-7): 0.01 %

OTHER INGREDIENTS*:..... 99.99%

100.00%

*Contains Denatonium Benzoate

EPA REG. NO. 12455-xxx

EPA EST. NO. 12455-WI-1

Net Wt.: 0.5 oz. (14g) block bait

DO NOT ALLOW CHILDREN OR PETS TO PLAY WITH THE BAIT STATION

This bait station can only be refilled with the block bait sold with this station.

CAUTION : See outer packaging for DIRECTIONS FOR USE, FIRST AID and additional PRECAUTIONARY STATEMENTS.

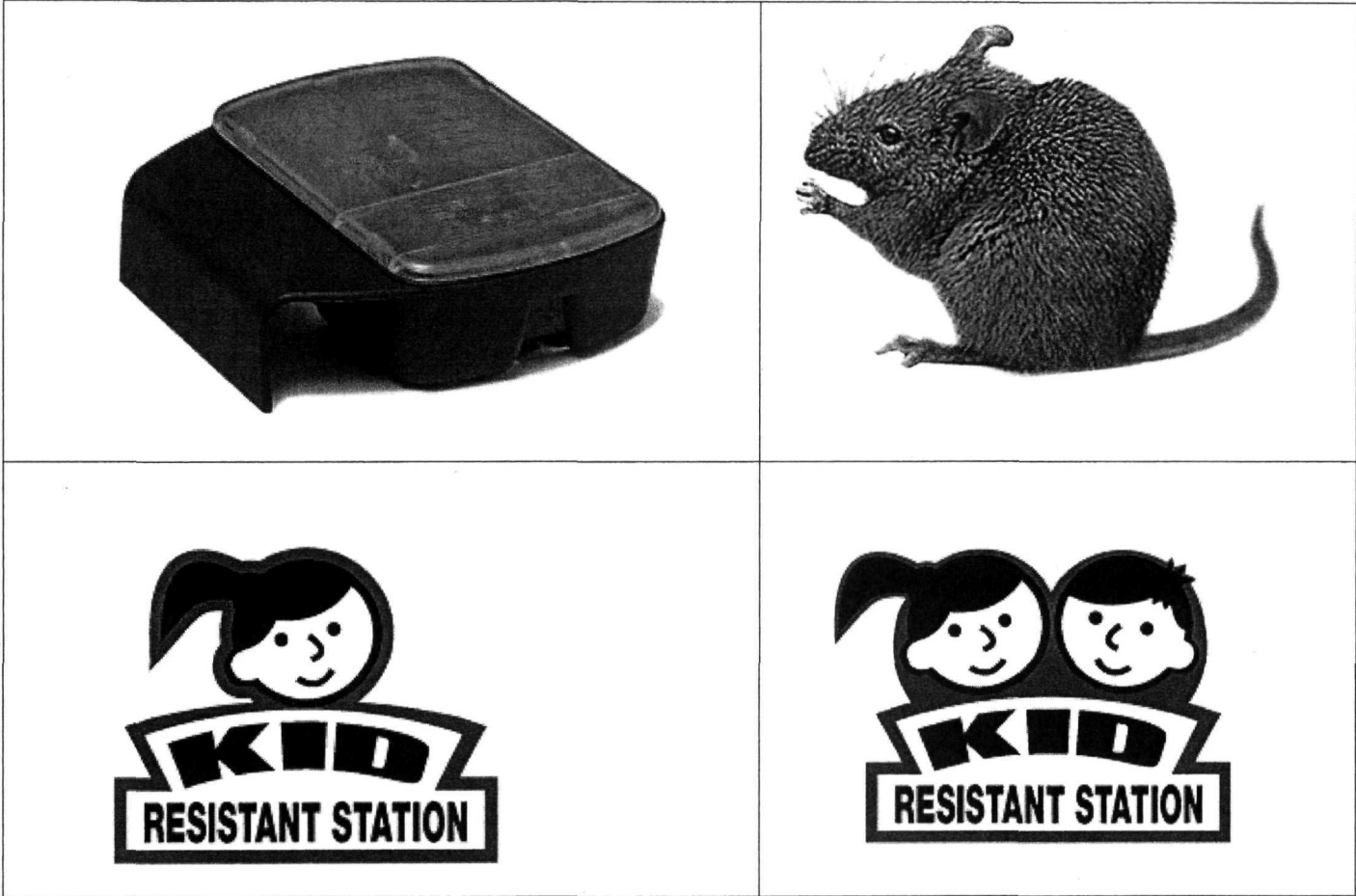
Model No. MR2a

OPTIONAL MARKETING STATEMENTS:

House mice usually consume a lethal dose in a single night's feeding but it may take two or more days from time of consumption for them to die.

- Kills house mice
- House mice cease feeding after consuming a toxic dose
- Refillable bait station
- Refillable house mouse bait station
- Mouse bait station
- See thru lid
- See thru lid for easy monitoring
- With bromethalin
- House mouse killer
- Includes xx oz of refill bait (blocks)
- Contains xx – 0.5 oz blocks (bait)
- Feeding station
- House mouse feeding station
- Reusable/Refillable
- Portico allows entry from either side
- One half ounce of bait per placement
- Made in USA
- Bait station
- With bromethalin
- Contains 0.5 oz block bait
- House mouse bait in a child tamper-resistant feeding station
- House mouse killer in a child tamper-resistant feeding station
- Child tamper-resistant
- Child resistant
- Use indoors
- Durable design is child resistant
- Station is child resistant
- Kid tested
- Kid Tested Station
- Kid Resistant
- Kid Tamper-Resistant
- Clear lid
- Clear lid for easy bait monitoring
- See-thru lid for easy bait monitoring

OPTIONAL GRAPHICS:



OPTIONAL GRAPHICS (CONT'D.):



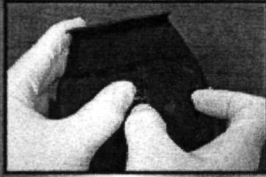
OPTIONAL GRAPHICS (CONT'D.):

**LOADING
BAIT INTO
STATION**

**1 REMOVE BAIT CARTRIDGE
FROM BOTTOM OF STATION**

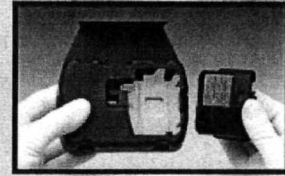


With your left hand push safety tab up.

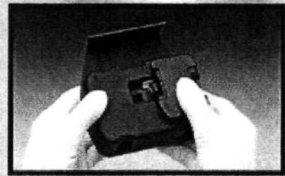


While still holding safety tab, squeeze prongs of bait cartridge and pull away from station.

2 LOAD BAIT

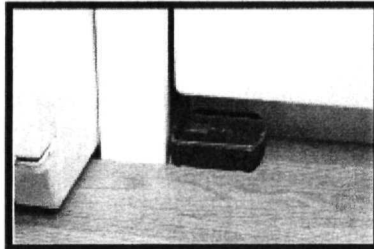


Place bait into cartridge.

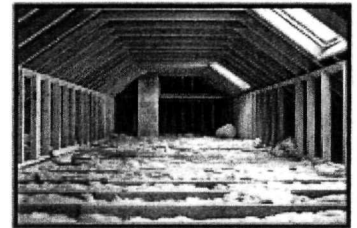


Push cartridge into station until it clicks into place.

**CAN BE USED
IN A VARIETY
OF LOCATIONS**



BEHIND APPLIANCES



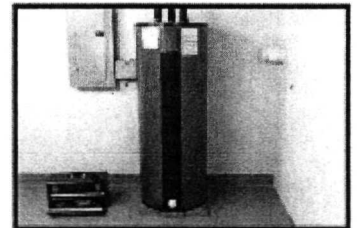
IN ATTICS



INSIDE CABINETS



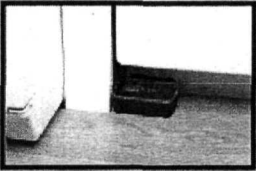
GARAGES



BASEMENTS

OPTIONAL GRAPHICS (CONT'D.):

**CAN BE USED IN
A VARIETY OF
LOCATIONS**



BEHIND APPLIANCES



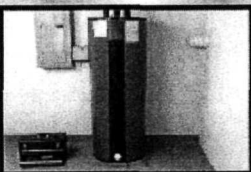
IN ATTICS



INSIDE CABINETS



GARAGES



BASEMENTS

**Must adhere to the USE
RESTRICTIONS in the
DIRECTIONS FOR USE
section of this label.**