



UNITED STATES ENVIRONMENTAL PROTECTION AGENCY  
WASHINGTON, DC 20460

OFFICE OF CHEMICAL SAFETY  
AND POLLUTION PREVENTION

June 11, 2019

Jennifer Klika  
Regulatory Affairs Manager  
Bell Laboratories, Inc.  
3699 Kinsman Blvd.  
Madison, WI 53704

Subject: Label Amendment – Revising language and adding marketing statements and graphics  
Product Name: Contrac with Lumitrack  
EPA Registration Number: 12455-133  
Application Date: February 15, 2019  
Decision Number: 549636

Dear Ms. Klika:

The amended label referred to above, submitted in connection with registration under the Federal Insecticide, Fungicide and Rodenticide Act, as amended, is acceptable. This approval does not affect any conditions that were previously imposed on this registration. You continue to be subject to existing conditions on your registration and any deadlines connected with them.

A stamped copy of your labeling is enclosed for your records. This labeling supersedes all previously accepted labeling. You must submit one copy of the final printed labeling before you release the product for shipment with the new labeling. In accordance with 40 CFR 152.130(c), you may distribute or sell this product under the previously approved labeling for 18 months from the date of this letter. After 18 months, you may only distribute or sell this product if it bears this new revised labeling or subsequently approved labeling. “To distribute or sell” is defined under FIFRA section 2(gg) and its implementing regulation at 40 CFR 152.3.

Should you wish to add/retain a reference to the company’s website on your label, then please be aware that the website becomes labeling under the Federal Insecticide Fungicide and Rodenticide Act and is subject to review by the Agency. If the website is false or misleading, the product would be misbranded and unlawful to sell or distribute under FIFRA section 12(a)(1)(E). 40 CFR 156.10(a)(5) list examples of statements EPA may consider false or misleading. In addition, regardless of whether a website is referenced on your product’s label, claims made on the website may not substantially differ from those claims approved through the registration process. Therefore, should the Agency find or if it is brought to our attention that a website contains false or misleading statements or claims substantially differing from the EPA approved registration, the website will be referred to the EPA’s Office of Enforcement and Compliance.

Your release for shipment of the product constitutes acceptance of these conditions. If these conditions are not complied with, the registration will be subject to cancellation in accordance

Page 2 of 2  
EPA Reg. No. 12455-133  
Decision No. 549636

with FIFRA section 6. If you have any questions, please contact Jasmin Jackson by phone at 703-347-0732, or via email at [jackson.jasmin@epa.gov](mailto:jackson.jasmin@epa.gov).

Sincerely,

A handwritten signature in blue ink, appearing to read "Gene Benbow".

Gene Benbow, Product Manager 7  
Invertebrate & Vertebrate Branch 3  
Registration Division (7505P)  
Office of Pesticide Programs

# CONTRAC® with LUMITRACK

***KILLS RATS, MICE, AND MEADOW VOLES\****

***KILLS WARFARIN RESISTANT NORWAY RATS***

Norway rats, roof rats, and house mice may consume a lethal dose in one night's feeding with the first dead rodents appearing four or five days after feeding begins.

**ACTIVE INGREDIENT**

Bromadiolone (CAS # 28772-56-7)	.....	0.005%
OTHER INGREDIENTS†	.....	99.995%
TOTAL	.....	100.00%

†Contains Denatonium Benzoate

EPA REG. NO. 12455-133

EPA EST. NO. 12455-WI-1<sup>k</sup>  
EPA EST. NO. 12455-WI-2<sup>p</sup>  
EPA EST. NO. 12455-WI-3<sup>w</sup>  
[superscript is first letter of lot number]

## KEEP OUT OF REACH OF CHILDREN CAUTION

**NET CONTENTS:** 16 pounds (7.26 kilograms) to 50 pounds (22.68 kilograms)

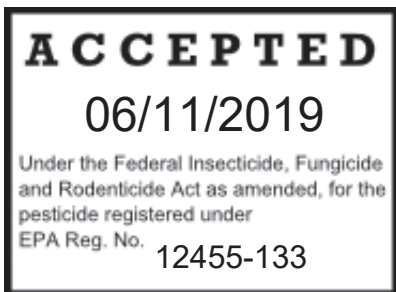
**NET WEIGHT:** 16 pounds (7.26 kilograms) to 50 pounds (22.68 kilograms)

**Manufactured By:**



**Bell Laboratories, Inc.**  
3699 Kinsman Blvd.  
Madison, WI 53704

**Batch Code:**



See back [bottom] [and] [side] panel[s] for  
First Aid, additional precautionary statements, and Directions for Use.

\*Not permitted for use against the following species in California: Cotton rat, Eastern harvest mouse, Golden mouse, Polynesian rat, Meadow vole, White-throated woodrat, Southern plains woodrat, and Mexican woodrat

***Bold, italicized text is information for the reader and is not part of the label.***

[Bracketed information is optional text.]

Text separated by / denotes and/or options.

<b>FIRST AID</b> <b>HAVE LABEL WHEN OBTAINING TREATMENT ADVICE</b>	
<b>If Swallowed:</b>	<ul style="list-style-type: none"><li>• Call a poison control center, doctor, or <b>1-877-854-2494</b> immediately for treatment advice.</li><li>• Have person sip a glass of water if able to swallow.</li><li>• Do not induce vomiting unless told to do so by the poison control center or doctor.</li><li>• Do not give anything by mouth to an unconscious person.</li></ul>
<b>If on Skin or Clothing:</b>	<ul style="list-style-type: none"><li>• Take off contaminated clothing.</li><li>• Rinse skin with plenty of cool water for 15-20 minutes.</li><li>• Call a poison control center or doctor immediate for treatment advice.</li></ul>
<b>If in Eyes:</b>	<ul style="list-style-type: none"><li>• Hold eye open and rinse slowly and gently with water for 15-20 minutes.</li><li>• Remove contact lenses, if present, after the first 5 minutes, then continue rinsing eye.</li><li>• Call a poison control center or doctor immediate for treatment advice.</li></ul>
<b>NOTE TO PHYSICIAN</b> If swallowed or absorbed through the skin, this material may reduce the clotting ability of the blood and cause bleeding. If ingested, administer Vitamin K <sub>1</sub> intramuscularly or orally. Repeat as necessary based on monitoring of prothrombin times.	
<b>TREATMENT FOR PET POISONING</b> If an animal eats this bait, call a veterinarian or 1-877-854-2494 at once.	
<b>NOTE TO VETERINARIAN</b> For animals ingesting bait and/or showing poisoning signs (bleeding or elevated prothrombin times), give Vitamin K <sub>1</sub> . If needed, check prothrombin times every 3 days until values return to normal (up to 30 days). In severe cases, blood transfusions may be needed.	

### **PRECAUTIONARY STATEMENTS**

#### **Hazards to Humans and Domestic Animals**

**CAUTION:** Harmful if swallowed or absorbed through the skin. Causes moderate eye irritation. Keep away from children, domestic animals and pets. Do not get in eyes, on skin, or on clothing. All handlers (including applicators) must wear long pants, shoes, socks, and waterproof gloves. Any person who retrieves carcasses or unused bait following application of this product must wear waterproof gloves.

#### **User Safety Requirements**

Follow manufacturer's instruction for cleaning/maintaining PPE. If no such instructions for washables exist, use detergent and hot water. Keep and wash PPE separately from other laundry. Remove PPE immediately after handling this product. Wash the outside of gloves before removing. As soon as possible, wash hands thoroughly after applying bait and before eating, drinking, chewing gum, using tobacco or using the toilet and change into clean clothing.

***Bold, italicized text is information for the reader and is not part of the label.***

[Bracketed information is optional text.]

Text separated by / denotes and/or options.

## ENVIRONMENTAL HAZARDS

This product is extremely toxic to mammals and birds. Dogs and other predatory and scavenging mammals and birds might be poisoned if they feed upon animals that have eaten this bait. Do not contaminate water when disposing of equipment wash water or rinsate.

## DIRECTIONS FOR USE

It is a violation of Federal law to use this product in a manner inconsistent with its labeling.

**READ THIS LABEL:** Read this entire label and follow all use directions and use precautions. Use only for sites, pests, and application methods described on this label.

**IMPORTANT:** Do not expose children, pets, or nontarget animals to rodenticides. To help to prevent exposure:

1. Store unused product out of reach of children and pets.
2. Apply bait in locations out of reach of children, pets, domestic animals and nontarget wildlife, or in tamper-resistant bait stations. These stations must be resistant to destruction by dogs and by children under six years of age, and must be used in a manner that prevents such children from reaching into bait compartments and obtaining bait. If bait can be shaken from bait stations when they are lifted, units must be secured or otherwise immobilized. Stronger bait stations are needed in areas open to hooved livestock, raccoons, bears, or other potentially destructive animals, or in areas prone to vandalism.
3. Dispose of product container and unused, spoiled, or unconsumed bait as specified on this label.

**Bait stations are mandatory for outdoor, above-ground use. Tamper-resistant bait stations must be used wherever children, pets, non-target mammals, or birds may have access to the bait placement location.**

**USE RESTRICTIONS:** This product may only be used to control the following rodent pests in and around man-made structures: House mouse (*Mus musculus*), Norway rat (*Rattus norvegicus*), Roof rat (*Rattus rattus*), Cotton rat\* (*Sigmodon hispidus*), Eastern harvest mouse\* (*Reithrodontomys humuli*), Golden mouse\* (*Ochrotomys nuttalli*), Polynesian rat\* (*Rattus exulans*), Meadow vole\* (*Microtus pennsylvanicus*), White-throated woodrat\* (*Neotoma albigula*), Southern plains woodrat\* (*Neotoma micropus*), and Mexican woodrat\* (*Neotoma mexicana*). The product must be used in and within 100 feet of man-made structures constructed in a manner so as to be vulnerable to commensal rodent invasions and/or to harboring or attracting rodent infestations. Examples of such structures include homes and other permanent or temporary residences, food processing facilities, industrial and commercial buildings, trash receptacles, agricultural and public buildings, transport vehicles (ships, trains, aircraft), docks and port or terminal buildings and related structures around and associated with these sites. Fence and perimeter baiting, beyond 100 feet from a structure as defined above, is prohibited. This product must not be applied directly to food or feed crops.

Burrow baiting with [Confrac® with Lumitrack][This Product] is prohibited.

***Bold, italicized text is information for the reader and is not part of the label.***

[Bracketed information is optional text.]

Text separated by / denotes and/or options.

Do not place near or inside ventilation duct openings. Do not contaminate water, food, feedstuffs, food or feed handling equipment, or milk or meat handling equipment or surfaces that come into direct contact with food. When used in USDA inspected facilities, this product must be applied in tamper-resistant bait stations. Do not broadcast bait. Do not use this product in sewers.

Do not sell this product in individual containers holding less than 16 pounds of bait.

**SELECTION OF TREATMENT AREAS:** Determine areas where rats, mice, or meadow voles\* will most likely find and consume bait. Generally, these are along walls, by gnawed openings, in corners and concealed places, between floors or walls, or in locations where rats, mice, or meadow voles\*, or their signs have been observed. Remove as much alternative food as possible.

**APPLICATION DIRECTIONS:**

**Rats:**

Apply 3 to 16 blocks per placement, usually spaced 15 to 30 feet apart. Maintain a constant supply of fresh bait for 10 days or until signs of rat activity cease.

**Mice and Meadow Voles\*:**

Apply 1 block per placement, usually spaced 8- to 12-feet apart. Up to 2 blocks may be needed at points of very high activity. Maintain a constant supply of fresh bait for 15 days or until signs of mouse or meadow vole\* activity cease.

**Follow-up:**

Replace contaminated or spoiled bait immediately. Wearing waterproof gloves, collect and properly dispose of all visible dead animals and leftover bait. To discourage reinfestation, limit sources of rodent food, water, and harborage as much as possible. If reinfestation does occur, repeat treatment. For a continuous infestation, set up permanent bait stations and replenish bait as needed.

**STORAGE AND DISPOSAL**

Do not contaminate water, food or feed by storage or disposal.

**Pesticide Storage:** Store only in original container in a cool, dry place inaccessible to children and pets. Keep containers closed and away from other chemicals.

**Pesticide Disposal:** Wastes resulting from the use of this product may be placed in trash or delivered to an approved waste disposal facility.

**Container Handling:** Nonrefillable container. Do not reuse or refill this container. Offer for recycling, if available. Dispose of empty container by placing in trash, at an approved waste disposal facility or by incineration.

**WARRANTY:** To the extent consistent with applicable law, seller makes no warranty, expressed or implied, concerning the use of this product other than indicated on the label. Buyer assumes all risk of use and/or handling of this material when such use and/or handling is contrary to label instructions.

***Bold, italicized text is information for the reader and is not part of the label.***

[Bracketed information is optional text.]

Text separated by / denotes and/or options.

# CONFRAC® with LUMITRACK

***KILLS RATS, MICE, AND MEADOW VOLES\****

***KILLS WARFARIN RESISTANT NORWAY RATS***

Norway rats, roof rats, and house mice may consume a lethal dose in one night's feeding with the first dead rodents appearing four or five days after feeding begins.

**ACTIVE INGREDIENT**

Bromadiolone (CAS # 28772-56-7)	.....	0.005%
OTHER INGREDIENTS†	.....	99.995%
TOTAL	.....	100.00%

†Contains Denatonium Benzoate

EPA REG. NO. 12455-133

EPA EST. NO. 12455-WI-1<sup>k</sup>  
EPA EST. NO. 12455-WI-2<sup>p</sup>  
EPA EST. NO. 12455-WI-3<sup>w</sup>  
[superscript is first letter of lot number]

## KEEP OUT OF REACH OF CHILDREN CAUTION

**NET CONTENTS:** 4 pound (1.81 kilograms) to 10 pounds (4.54 kilograms)

**NET WEIGHT:** 4 pound (1.81 kilograms) to 10 pounds (4.54 kilograms)

**Manufactured By:**



**Bell Laboratories, Inc.**  
3699 Kinsman Blvd.  
Madison, WI 53704

**Batch Code:**

[For Pest Control Operator Label: Add the following for packages containing less than 16 lbs. of bait:]

**IT IS ILLEGAL TO SELL THIS PRODUCT IN PACKAGES HOLDING LESS THAN  
16 POUNDS OF BAIT**

See back [bottom] [and] [side] panel[s] for  
First Aid, additional precautionary statements, and Directions for Use.

\*Not permitted for use against the following species in California: Cotton rat, Eastern harvest mouse, Golden mouse, Polynesian rat, Meadow vole, White-throated woodrat, Southern plains woodrat, and Mexican woodrat

***Bold, italicized text is information for the reader and is not part of the label.***

[Bracketed information is optional text.]

Text separated by / denotes and/or options.

<b>FIRST AID</b> <b>HAVE LABEL WHEN OBTAINING TREATMENT ADVICE</b>	
<b>If Swallowed:</b>	<ul style="list-style-type: none"><li>• Call a poison control center, doctor, or <b>1-877-854-2494</b> immediately for treatment advice.</li><li>• Have person sip a glass of water if able to swallow.</li><li>• Do not induce vomiting unless told to do so by the poison control center or doctor.</li><li>• Do not give anything by mouth to an unconscious person.</li></ul>
<b>If on Skin or Clothing:</b>	<ul style="list-style-type: none"><li>• Take off contaminated clothing.</li><li>• Rinse skin with plenty of cool water for 15-20 minutes.</li><li>• Call a poison control center or doctor immediate for treatment advice.</li></ul>
<b>If in Eyes:</b>	<ul style="list-style-type: none"><li>• Hold eye open and rinse slowly and gently with water for 15-20 minutes.</li><li>• Remove contact lenses, if present, after the first 5 minutes, then continue rinsing eye.</li><li>• Call a poison control center or doctor immediate for treatment advice.</li></ul>
<b>NOTE TO PHYSICIAN</b> If swallowed or absorbed through the skin, this material may reduce the clotting ability of the blood and cause bleeding. If ingested, administer Vitamin K <sub>1</sub> intramuscularly or orally. Repeat as necessary based on monitoring of prothrombin times.	
<b>TREATMENT FOR PET POISONING</b> If an animal eats this bait, call a veterinarian or 1-877-854-2494 at once.	
<b>NOTE TO VETERINARIAN</b> For animals ingesting bait and/or showing poisoning signs (bleeding or elevated prothrombin times), give Vitamin K <sub>1</sub> . If needed, check prothrombin times every 3 days until values return to normal (up to 30 days). In severe cases, blood transfusions may be needed.	

### **PRECAUTIONARY STATEMENTS**

#### **Hazards to Humans and Domestic Animals**

**CAUTION:** Harmful if swallowed or absorbed through the skin. Causes moderate eye irritation. Keep away from children, domestic animals and pets. Do not get in eyes, on skin, or on clothing. All handlers (including applicators) must wear long pants, shoes, socks, and waterproof gloves. Any person who retrieves carcasses or unused bait following application of this product must wear waterproof gloves.

#### **User Safety Requirements**

Follow manufacturer's instruction for cleaning/maintaining PPE. If no such instructions for washables exist, use detergent and hot water. Keep and wash PPE separately from other laundry. Remove PPE immediately after handling this product. Wash the outside of gloves before removing. As soon as possible, wash hands thoroughly after applying bait and before eating, drinking, chewing gum, using tobacco or using the toilet and change into clean clothing.

***Bold, italicized text is information for the reader and is not part of the label.***

[Bracketed information is optional text.]

Text separated by / denotes and/or options.



## ENVIRONMENTAL HAZARDS

This product is extremely toxic to mammals and birds. Dogs and other predatory and scavenging mammals and birds might be poisoned if they feed upon animals that have eaten this bait. Do not contaminate water when disposing of equipment wash water or rinsate.

## DIRECTIONS FOR USE

It is a violation of Federal law to use this product in a manner inconsistent with its labeling.

**READ THIS LABEL:** Read this entire label and follow all use directions and use precautions. Use only for sites, pests, and application methods described on this label.

**IMPORTANT:** Do not expose children, pets, or nontarget animals to rodenticides. To help to prevent exposure:

4. Store unused product out of reach of children and pets.
5. Apply bait in locations out of reach of children, pets, domestic animals and nontarget wildlife, or in tamper-resistant bait stations. These stations must be resistant to destruction by dogs and by children under six years of age, and must be used in a manner that prevents such children from reaching into bait compartments and obtaining bait. If bait can be shaken from bait stations when they are lifted, units must be secured or otherwise immobilized. Stronger bait stations are needed in areas open to hooved livestock, raccoons, bears, or other potentially destructive animals, or in areas prone to vandalism.
6. Dispose of product container and unused, spoiled, or unconsumed bait as specified on this label.

**Bait stations are mandatory for outdoor, above-ground use. Tamper-resistant bait stations must be used wherever children, pets, non-target mammals, or birds may have access to the bait placement location.**

**USE RESTRICTIONS:** This product may only be used to control the following rodent pests in and around man-made structures: House mouse (*Mus musculus*), Norway rat (*Rattus norvegicus*), Roof rat (*Rattus rattus*), Cotton rat\* (*Sigmodon hispidus*), Eastern harvest mouse\* (*Reithrodontomys humuli*), Golden mouse\* (*Ochrotomys nuttalli*), Polynesian rat\* (*Rattus exulans*), Meadow vole\* (*Microtus pennsylvanicus*), White-throated woodrat\* (*Neotoma albigula*), Southern plains woodrat\* (*Neotoma micropus*), and Mexican woodrat\* (*Neotoma mexicana*). The product must be used in and within 100 feet of man-made structures constructed in a manner so as to be vulnerable to commensal rodent invasions and/or to harboring or attracting rodent infestations. Examples of such structures include homes and other permanent or temporary residences, food processing facilities, industrial and commercial buildings, trash receptacles, agricultural and public buildings, transport vehicles (ships, trains, aircraft), docks and port or terminal buildings and related structures around and associated with these sites. Fence and perimeter baiting, beyond 100 feet from a structure as defined above, is prohibited. This product must not be applied directly to food or feed crops.

Burrow baiting with [Contra<sup>®</sup> with Lumitrack][This Product] is prohibited.

***Bold, italicized text is information for the reader and is not part of the label.***

[Bracketed information is optional text.]

Text separated by / denotes and/or options.

Do not place near or inside ventilation duct openings. Do not contaminate water, food, feedstuffs, food or feed handling equipment, or milk or meat handling equipment or surfaces that come into direct contact with food. When used in USDA inspected facilities, this product must be applied in tamper-resistant bait stations. Do not broadcast bait. Do not use this product in sewers.

Do not sell this product in individual containers holding less than 16 pounds of bait.

**SELECTION OF TREATMENT AREAS:** Determine areas where rats, mice, or meadow voles\* will most likely find and consume bait. Generally, these are along walls, by gnawed openings, in corners and concealed places, between floors or walls, or in locations where rats, mice, or meadow voles\*, or their signs have been observed. Remove as much alternative food as possible.

**APPLICATION DIRECTIONS:**

**Rats:**

Apply 3 to 16 blocks per placement, usually spaced 15 to 30 feet apart. Maintain a constant supply of fresh bait for 10 days or until signs of rat activity cease.

**Mice and Meadow Voles\*:**

Apply 1 block per placement, usually spaced 8- to 12-feet apart. Up to 2 blocks may be needed at points of very high activity. Maintain a constant supply of fresh bait for 15 days or until signs of mouse or meadow vole\* activity cease.

**Follow-up:**

Replace contaminated or spoiled bait immediately. Wearing waterproof gloves, collect and properly dispose of all visible dead animals and leftover bait. To discourage reinfestation, limit sources of rodent food, water, and harborage as much as possible. If reinfestation does occur, repeat treatment. For a continuous infestation, set up permanent bait stations and replenish bait as needed.

**STORAGE AND DISPOSAL**

Do not contaminate water, food or feed by storage or disposal.

**Pesticide Storage:** Store only in original container in a cool, dry place inaccessible to children and pets. Keep containers closed and away from other chemicals.

**Pesticide Disposal:** Wastes resulting from the use of this product may be placed in trash or delivered to an approved waste disposal facility.

**Container Handling:** Nonrefillable container. Do not reuse or refill this container. Offer for recycling, if available. Dispose of empty container by placing in trash, at an approved waste disposal facility or by incineration.

**WARRANTY:** To the extent consistent with applicable law, seller makes no warranty, expressed or implied, concerning the use of this product other than indicated on the label. Buyer assumes all risk of use and/or handling of this material when such use and/or handling is contrary to label instructions.

***Bold, italicized text is information for the reader and is not part of the label.***

[Bracketed information is optional text.]

Text separated by / denotes and/or options.

# CONTRAC<sup>®</sup> with LUMITRACK

This product may only be used inside and within 100 feet of agricultural buildings and man-made agricultural structures.

***KILLS RATS, MICE, AND MEADOW VOLES\****

***KILLS WARFARIN RESISTANT NORWAY RATS***

Norway rats, roof rats, and house mice may consume a lethal dose in one night's feeding with the first dead rodents appearing four or five days after feeding begins.

**ACTIVE INGREDIENT**

Bromadiolone (CAS # 28772-56-7)	.....	0.005%
OTHER INGREDIENTS†	.....	99.995%
TOTAL	.....	100.00%

†Contains Denatonium Benzoate

EPA REG. NO. 12455-133  
EPA EST. NO. 12455-WI-1<sup>k</sup>  
EPA EST. NO. 12455-WI-2<sup>p</sup>  
EPA EST. NO. 12455-WI-3<sup>w</sup>  
[superscript is first letter of lot number]

## KEEP OUT OF REACH OF CHILDREN CAUTION

**NET CONTENTS:** 8 pounds (3.63 kilograms) to 50 pounds (22.68 kilograms)

**NET WEIGHT:** 8 pounds (3.63 kilograms) to 50 pounds (22.68 kilograms)

**Manufactured By:**



**Bell Laboratories, Inc.**  
3699 Kinsman Blvd.  
Madison, WI 53704

**Batch Code:**

See back [bottom] [and] [side] panel[s] for  
First Aid, additional precautionary statements, and Directions for Use.

\*Not permitted for use against the following species in California: Cotton rat, Eastern harvest mouse, Golden mouse, Polynesian rat, Meadow vole, White-throated woodrat, Southern plains woodrat, and Mexican woodrat

***Bold, italicized text is information for the reader and is not part of the label.***

[Bracketed information is optional text.]

Text separated by / denotes and/or options.

<b>FIRST AID</b>	
<b>HAVE LABEL WHEN OBTAINING TREATMENT ADVICE</b>	
<b>If Swallowed:</b>	<ul style="list-style-type: none"> <li>• Call a poison control center, doctor, or <b>1-877-854-2494</b> immediately for treatment advice.</li> <li>• Have person sip a glass of water if able to swallow.</li> <li>• Do not induce vomiting unless told to do so by the poison control center or doctor.</li> <li>• Do not give anything by mouth to an unconscious person.</li> </ul>
<b>If on Skin or Clothing:</b>	<ul style="list-style-type: none"> <li>• Take off contaminated clothing.</li> <li>• Rinse skin with plenty of cool water for 15-20 minutes.</li> <li>• Call a poison control center or doctor immediate for treatment advice.</li> </ul>
<b>If in Eyes:</b>	<ul style="list-style-type: none"> <li>• Hold eye open and rinse slowly and gently with water for 15-20 minutes.</li> <li>• Remove contact lenses, if present, after the first 5 minutes, then continue rinsing eye.</li> <li>• Call a poison control center or doctor immediate for treatment advice.</li> </ul>
<b>NOTE TO PHYSICIAN</b>	
<p>If swallowed or absorbed through the skin, this material may reduce the clotting ability of the blood and cause bleeding. If ingested, administer Vitamin K<sub>1</sub> intramuscularly or orally. Repeat as necessary based on monitoring of prothrombin times.</p>	
<b>TREATMENT FOR PET POISONING</b>	
<p>If an animal eats this bait, call a veterinarian or 1-877-854-2494 at once.</p>	
<b>NOTE TO VETERINARIAN</b>	
<p>For animals ingesting bait and/or showing poisoning signs (bleeding or elevated prothrombin times), give Vitamin K<sub>1</sub>. If needed, check prothrombin times every 3 days until values return to normal (up to 30 days). In severe cases, blood transfusions may be needed.</p>	

### PRECAUTIONARY STATEMENTS

#### **Hazards to Humans and Domestic Animals**

**CAUTION:** Harmful if swallowed or absorbed through the skin. Causes moderate eye irritation. Keep away from children, domestic animals and pets. Do not get in eyes, on skin, or on clothing.

All handlers (including applicators) must wear long pants, shoes, socks, and waterproof gloves. Any person who retrieves carcasses or unused bait following application of this product must wear waterproof gloves.

#### **User Safety Requirements**

Follow manufacturer's instruction for cleaning/maintaining PPE. If no such instructions for washables exists, use detergent and hot water. Keep and wash PPE separately from other laundry. Remove PPE immediately after handling this product. Wash the outside of gloves before removing. As soon as possible, wash hands thoroughly after applying bait and before eating, drinking, chewing gum, using tobacco or using the toilet and change into clean clothing

***Bold, italicized text is information for the reader and is not part of the label.***

[Bracketed information is optional text.]

Text separated by / denotes and/or options.

## ENVIRONMENTAL HAZARDS

This product is extremely toxic to mammals and birds. Dogs and other predatory and scavenging mammals and birds might be poisoned if they feed upon animals that have eaten this bait. Do not contaminate water when disposing of equipment wash water or rinsate.

## DIRECTIONS FOR USE

It is a violation of Federal law to use this product in a manner inconsistent with its labeling.

**READ THIS LABEL:** Read this entire label and follow all use directions and use precautions. Use only for sites, pests, and application methods described on this label.

**IMPORTANT:** Do not expose children, pets, or nontarget animals to rodenticides. To help to prevent exposure:

1. Store unused product out of reach of children and pets.
2. Apply bait in locations out of reach of children, pets, domestic animals and nontarget wildlife, or in tamper-resistant bait stations. These stations must be resistant to destruction by dogs and by children under six years of age, and must be used in a manner that prevents such children from reaching into bait compartments and obtaining bait. If bait can be shaken from bait stations when they are lifted, units must be secured or otherwise immobilized. Stronger bait stations are needed in areas open to hooved livestock, raccoons, bears, or other potentially destructive animals, or in areas prone to vandalism.
3. Dispose of product container and unused, spoiled, or unconsumed bait as specified on this label.

**Bait stations are mandatory for outdoor, above-ground use. Tamper-resistant bait stations must be used wherever children, pets, non-target mammals, or birds may have access to the bait placement location.**

**USE RESTRICTIONS:** This product may only be used to control the following rodent pests in and around agricultural buildings and man-made agricultural structures: House mouse (*Mus musculus*), Norway rat (*Rattus norvegicus*), Roof rat (*Rattus rattus*), Cotton rat\* (*Sigmodon hispidus*), Eastern harvest mouse\* (*Reithrodontomys humuli*), Golden mouse\* (*Ochrotomys nuttalli*), Polynesian rat\* (*Rattus exulans*), Meadow vole\* (*Microtus pennsylvanicus*), White-throated woodrat\* (*Neotoma albigula*), Southern plains woodrat\* (*Neotoma micropus*), and Mexican woodrat\* (*Neotoma mexicana*). This product must be used in and within 100 feet of agricultural buildings and man-made agricultural structures constructed in a manner so as to be vulnerable to commensal rodent invasions and/or harboring or attracting rodent infestations. Fence and perimeter baiting, beyond 100 feet from an agricultural structure as defined above, is prohibited. This product must not be applied directly to food or feed crops.

Burrow baiting with [Contra<sup>®</sup> with Lumitrack][This Product] is prohibited.

Do not use in homes or human residences. Do not place near or inside ventilation duct openings. Do not contaminate water, food, feedstuffs, food or feed handling equipment, or milk or meat handling equipment or surfaces that come into direct contact with food. Do not broadcast bait. When used in USDA inspected facilities, this product must be applied in tamper-resistant bait stations.

***Bold, italicized text is information for the reader and is not part of the label.***

[Bracketed information is optional text.]

Text separated by / denotes and/or options.

Do not sell this product in individual containers holding less than 8 pounds of bait.

**SELECTION OF TREATMENT AREAS:** Determine areas where rats, mice, or meadow voles\* will most likely find and consume bait. Generally, these are along walls, by gnawed openings, in corners and concealed places, between floors or walls, in or beside burrows, or in locations where rats, mice, or meadow voles\*, or their signs have been observed. Remove as much alternative food as possible.

**APPLICATION DIRECTIONS:**

**Rats:**

Apply 3 to 16 blocks per placement, usually spaced 15 to 30 feet apart. Maintain a constant supply of fresh bait for 10 days or until signs of rat activity cease.

**Mice and Meadow Voles\*:**

Apply 1 block per placement, usually spaced 8- to 12-feet apart. Up to 2 blocks may be needed at points of very high activity. Maintain a constant supply of fresh bait for 15 days or until signs of mouse or meadow vole\* activity cease.

**Follow-up:**

Replace contaminated or spoiled bait immediately. Using waterproof gloves, collect and properly dispose of all visible dead animals and leftover bait. To discourage reinfestation, limit sources of rodent food, water, and harborage as much as possible. If reinfestation does occur, repeat treatment. For a continuous infestation, set up permanent bait stations and replenish bait as needed.

**STORAGE AND DISPOSAL**

Do not contaminate water, food or feed by storage or disposal.

**Pesticide Storage:** Store only in original container in a cool, dry place inaccessible to children and pets. Keep containers closed and away from other chemicals.

**Pesticide Disposal:** Wastes resulting from the use of this product may be placed in trash or delivered to an approved waste disposal facility.

**Container Handling:** Nonrefillable container. Do not reuse or refill this container. Offer for recycling, if available. Dispose of empty container by placing in trash, at an approved waste disposal facility or by incineration.

**WARRANTY:** To the extent consistent with applicable law, seller makes no warranty, expressed or implied, concerning the use of this product other than indicated on the label. Buyer assumes all risk of use and/or handling of this material when such use and/or handling is contrary to label instructions

***Bold, italicized text is information for the reader and is not part of the label.***

[Bracketed information is optional text.]

Text separated by / denotes and/or options.

# CONTRAC<sup>®</sup> with LUMITRACK

This product may only be used inside and within 100 feet of agricultural buildings and man-made agricultural structures.

***KILLS RATS, MICE, AND MEADOW VOLES\****

***KILLS WARFARIN RESISTANT NORWAY RATS***

Norway rats, roof rats, and house mice may consume a lethal dose in one night's feeding with the first dead rodents appearing four or five days after feeding begins.

**ACTIVE INGREDIENT**

Bromadiolone (CAS # 28772-56-7)	.....	0.005%
OTHER INGREDIENTS†	.....	99.995%
TOTAL	.....	100.00%

†Contains Denatonium Benzoate

EPA REG. NO. 12455-133  
EPA EST. NO. 12455-WI-1<sup>k</sup>  
EPA EST. NO. 12455-WI-2<sup>p</sup>  
EPA EST. NO. 12455-WI-3<sup>w</sup>  
[superscript is first letter of lot number]

## KEEP OUT OF REACH OF CHILDREN CAUTION

**NET CONTENTS:** 4 pound (1.81 kilograms) to 50 pounds (1.81 kilograms)

**NET WEIGHT:** 4 pound (1.81 kilograms) to 50 pounds (1.81 kilograms)

**Manufactured By:**



Bell Laboratories, Inc.  
3699 Kinsman Blvd.  
Madison, WI 53704

**Batch Code:**

[For Agricultural Use Label: Add the following for packages containing less than 8 lbs. of bait:]  
**IT IS ILLEGAL TO SELL THIS PRODUCT IN PACKAGES HOLDING LESS THAN  
8 POUNDS OF BAIT**

See back [bottom] [and] [side] panel[s] for  
First Aid, additional precautionary statements, and Directions for Use.

\*Not permitted for use against the following species in California: Cotton rat, Eastern harvest mouse, Golden mouse, Polynesian rat, Meadow vole, White-throated woodrat, Southern plains woodrat, and Mexican woodrat

***Bold, italicized text is information for the reader and is not part of the label.***

[Bracketed information is optional text.]

Text separated by / denotes and/or options.

<b>FIRST AID</b> <b>HAVE LABEL WHEN OBTAINING TREATMENT ADVICE</b>	
<b>If Swallowed:</b>	<ul style="list-style-type: none"> <li>• Call a poison control center, doctor, or <b>1-877-854-2494</b> immediately for treatment advice.</li> <li>• Have person sip a glass of water if able to swallow.</li> <li>• Do not induce vomiting unless told to do so by the poison control center or doctor.</li> <li>• Do not give anything by mouth to an unconscious person.</li> </ul>
<b>If on Skin or Clothing:</b>	<ul style="list-style-type: none"> <li>• Take off contaminated clothing.</li> <li>• Rinse skin with plenty of cool water for 15-20 minutes.</li> <li>• Call a poison control center or doctor immediate for treatment advice.</li> </ul>
<b>If in Eyes:</b>	<ul style="list-style-type: none"> <li>• Hold eye open and rinse slowly and gently with water for 15-20 minutes.</li> <li>• Remove contact lenses, if present, after the first 5 minutes, then continue rinsing eye.</li> <li>• Call a poison control center or doctor immediate for treatment advice.</li> </ul>
<b>NOTE TO PHYSICIAN</b>	
If swallowed or absorbed through the skin, this material may reduce the clotting ability of the blood and cause bleeding. If ingested, administer Vitamin K <sub>1</sub> intramuscularly or orally. Repeat as necessary based on monitoring of prothrombin times.	
<b>TREATMENT FOR PET POISONING</b>	
If an animal eats this bait, call a veterinarian or 1-877-854-2494 at once.	
<b>NOTE TO VETERINARIAN</b>	
For animals ingesting bait and/or showing poisoning signs (bleeding or elevated prothrombin times), give Vitamin K <sub>1</sub> . If needed, check prothrombin times every 3 days until values return to normal (up to 30 days). In severe cases, blood transfusions may be needed.	

### PRECAUTIONARY STATEMENTS

#### **Hazards to Humans and Domestic Animals**

**CAUTION:** Harmful if swallowed or absorbed through the skin. Causes moderate eye irritation. Keep away from children, domestic animals and pets. Do not get in eyes, on skin, or on clothing.

All handlers (including applicators) must wear long pants, shoes, socks, and waterproof gloves. Any person who retrieves carcasses or unused bait following application of this product must wear waterproof gloves.

#### **User Safety Requirements**

Follow manufacturer's instruction for cleaning/maintaining PPE. If no such instructions for washables exists, use detergent and hot water. Keep and wash PPE separately from other laundry. Remove PPE immediately after handling this product. Wash the outside of gloves before removing. As soon as possible, wash hands thoroughly after applying bait and before eating, drinking, chewing gum, using tobacco or using the toilet and change into clean clothing

***Bold, italicized text is information for the reader and is not part of the label.***

[Bracketed information is optional text.]

Text separated by / denotes and/or options.



## ENVIRONMENTAL HAZARDS

This product is extremely toxic to mammals and birds. Dogs and other predatory and scavenging mammals and birds might be poisoned if they feed upon animals that have eaten this bait. Do not contaminate water when disposing of equipment wash water or rinsate.

## DIRECTIONS FOR USE

It is a violation of Federal law to use this product in a manner inconsistent with its labeling.

**READ THIS LABEL:** Read this entire label and follow all use directions and use precautions. Use only for sites, pests, and application methods described on this label.

**IMPORTANT:** Do not expose children, pets, or nontarget animals to rodenticides. To help to prevent exposure:

4. Store unused product out of reach of children and pets.
5. Apply bait in locations out of reach of children, pets, domestic animals and nontarget wildlife, or in tamper-resistant bait stations. These stations must be resistant to destruction by dogs and by children under six years of age, and must be used in a manner that prevents such children from reaching into bait compartments and obtaining bait. If bait can be shaken from bait stations when they are lifted, units must be secured or otherwise immobilized. Stronger bait stations are needed in areas open to hooved livestock, raccoons, bears, or other potentially destructive animals, or in areas prone to vandalism.
6. Dispose of product container and unused, spoiled, or unconsumed bait as specified on this label.

**Bait stations are mandatory for outdoor, above-ground use. Tamper-resistant bait stations must be used wherever children, pets, non-target mammals, or birds may have access to the bait placement location.**

**USE RESTRICTIONS:** This product may only be used to control the following rodent pests in and around agricultural buildings and man-made agricultural structures: House mouse (*Mus musculus*), Norway rat (*Rattus norvegicus*), Roof rat (*Rattus rattus*), Cotton rat\* (*Sigmodon hispidus*), Eastern harvest mouse\* (*Reithrodontomys humuli*), Golden mouse\* (*Ochrotomys nuttalli*), Polynesian rat\* (*Rattus exulans*), Meadow vole\* (*Microtus pennsylvanicus*), White-throated woodrat\* (*Neotoma albigula*), Southern plains woodrat\* (*Neotoma micropus*), and Mexican woodrat\* (*Neotoma mexicana*). This product must be used in and within 100 feet of agricultural buildings and man-made agricultural structures constructed in a manner so as to be vulnerable to commensal rodent invasions and/or harboring or attracting rodent infestations. Fence and perimeter baiting, beyond 100 feet from an agricultural structure as defined above, is prohibited. This product must not be applied directly to food or feed crops.

Burrow baiting with [Contra<sup>®</sup> with Lumitrack][This Product] is prohibited.

Do not use in homes or human residences. Do not place near or inside ventilation duct openings. Do not contaminate water, food, feedstuffs, food or feed handling equipment, or milk or meat handling equipment or surfaces that come into direct contact with food. Do not broadcast bait. When used in USDA inspected facilities, this product must be applied in tamper-resistant bait stations.

***Bold, italicized text is information for the reader and is not part of the label.***

[Bracketed information is optional text.]

Text separated by / denotes and/or options.

Do not sell this product in individual containers holding less than 8 pounds of bait.

**SELECTION OF TREATMENT AREAS:** Determine areas where rats, mice, or meadow voles\* will most likely find and consume bait. Generally, these are along walls, by gnawed openings, in corners and concealed places, between floors or walls, in or beside burrows, or in locations where rats, mice, or meadow voles\*, or their signs have been observed. Remove as much alternative food as possible.

**APPLICATION DIRECTIONS:**

**Rats:**

Apply 3 to 16 blocks per placement, usually spaced 15 to 30 feet apart. Maintain a constant supply of fresh bait for 10 days or until signs of rat activity cease.

**Mice and Meadow Voles\*:**

Apply 1 block per placement, usually spaced 8- to 12-feet apart. Up to 2 blocks may be needed at points of very high activity. Maintain a constant supply of fresh bait for 15 days or until signs of mouse or meadow vole\* activity cease.

**Follow-up:**

Replace contaminated or spoiled bait immediately. Using waterproof gloves, collect and properly dispose of all visible dead animals and leftover bait. To discourage reinfestation, limit sources of rodent food, water, and harborage as much as possible. If reinfestation does occur, repeat treatment. For a continuous infestation, set up permanent bait stations and replenish bait as needed.

**STORAGE AND DISPOSAL**

Do not contaminate water, food or feed by storage or disposal.

**Pesticide Storage:** Store only in original container in a cool, dry place inaccessible to children and pets. Keep containers closed and away from other chemicals.

**Pesticide Disposal:** Wastes resulting from the use of this product may be placed in trash or delivered to an approved waste disposal facility.

**Container Handling:** Nonrefillable container. Do not reuse or refill this container. Offer for recycling, if available. Dispose of empty container by placing in trash, at an approved waste disposal facility or by incineration.

**WARRANTY:** To the extent consistent with applicable law, seller makes no warranty, expressed or implied, concerning the use of this product other than indicated on the label. Buyer assumes all risk of use and/or handling of this material when such use and/or handling is contrary to label instructions

***Bold, italicized text is information for the reader and is not part of the label.***

[Bracketed information is optional text.]

Text separated by / denotes and/or options.

**OPTIONAL MARKETING STATEMENTS:**

All-Weather

All-Weather [Bait Chunx][Block Bait]  
[Blox][Chunx]

All-Weather Formula

[Bait Chunx][Block Bait][Blox][Chunx]

Bromadiolone

By making feces easier to see, Lumitrack makes rodent identification easier in low light conditions

By making feces easier to see, Lumitrack helps determine the size of an infestation in low light conditions

Can be used indoors or out (within 100 feet of agricultural buildings)

[Contains][With] Bromadiolone

[Contains][With][Includes] Lumitrack

[Contains][With][Includes] Lumitrack Additive

For use in and around (within 100 ft of) agricultural buildings.

Free Black light Inside \$14.99 Value

Lumitrack aids in locating entry holes for rodent proofing in low light conditions.

Lumitrack aids in inspection of inbound pallets in low light conditions

Lumitrack aids in inspection of rodent activity on inbound pallets in low light conditions

Lumitrack helps determine amount of bait consumption in low light conditions

Lumitrack helps track rodent movement and identify harborage areas in low light conditions

Lumitrack improves serviceability by aiding in visual identification in low light conditions

Lumitrack increases serviceability in low light conditions

Lumitrack is visible under black light in low light conditions

Lumitrack Luminesces Under Black Light in Low Light Conditions

Lumitrack makes bait easier to monitor in low light conditions

Lumitrack makes rodent feces glow under black light in low light conditions

Lumitrack simplifies identification of rodent pathways in low light conditions

Made in USA

Mold and Moisture Resistant

Multi-edge shape gives rodents gnawing edges

Multi-edge shape gives rats, mice, and meadow voles\* gnawing edges

With Lumitrack

With Special Lumitrack

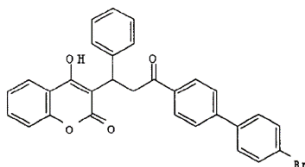
***Bold, italicized text is information for the reader and is not part of the label.***

[Bracketed information is optional text.]

Text separated by / denotes and/or options.

**OPTIONAL GRAPHICS:**

[Image of Bromadiolone Structure]



*4 blocks is a rat, not a mouse, placement*



***Bold, italicized text is information for the reader and is not part of the label.***

[Bracketed information is optional text.]

Text separated by / denotes and/or options.