

12455-133

12/21/2010

1/29



U.S. ENVIRONMENTAL PROTECTION AGENCY
Office of Pesticide Programs
Registration Division (7505C)
1200 Pennsylvania Ave., N.W.
Washington, D.C. 20460

EPA Reg. Number:

12455-133

Date of Issuance:

DEC 21 2010

NOTICE OF PESTICIDE:

Registration
 Reregistration

(under FIFRA, as amended)

Term of Issuance:

Unconditional

Name of Pesticide Product:

CONTRAC® LUMITRACK BLOX

Name and Address of Registrant (include ZIP Code):

Bell Laboratories
3699 Kinsman Blvd.
Madison, WI 53704

Decision # 434411

R310 5 -875521
1160

Attention: Mr. John Lublinkhof

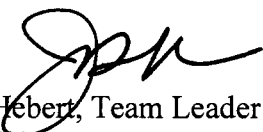
Note: Changes in labeling differing in substance from that accepted in connection with this registration must be submitted to and accepted by the Registration Division prior to use of the label in commerce. In any correspondence on this product always refer to the above EPA registration number.

On the basis of information furnished by the registrant, the above named pesticide is hereby registered/reregistered under the Federal Insecticide, Fungicide and Rodenticide Act.

Registration is in no way to be construed as an endorsement or recommendation of this product by the Agency. In order to protect health and the environment, the Administrator, on his motion, may at any time suspend or cancel the registration of a pesticide in accordance with the Act. The acceptance of any name in connection with the registration of a product under this Act is not to be construed as giving the registrant a right to exclusive use of the name or to its use if it has been covered by others.

This product is registered in accordance with FIFRA section 3(c)(5) provided that you

- A. submit one (1) copy of final printed labeling, with the following changes, before you release the product for shipment:


John Hebert, Team Leader
Insecticide-Rodenticide Branch
Registration Division (7505P)

Date:

DEC 21 2010

EPA Reg. No. 12455-133

1. Revise the registration number to "EPA Reg. No. 12455-133".
2. Follow the enclosed "Minimum Type Size Requirements for Final Printed Label".
3. On the Front Panel of all your labels, change "**BIOMARKER**" to "**LUMITRACK**".
4. Revise your Front Panel precautionary text as follows:

**KEEP OUT OF REACH OF CHILDREN
CAUTION**

FIRST AID Have label with you when obtaining treatment advice.	
If swallowed	<ul style="list-style-type: none"> •Call a poison control center or doctor immediately for treatment advice. •Have person sip a glass of water if able to swallow. •Do not induce vomiting unless told to do so by the poison control center or doctor.
If on skin or clothing	<ul style="list-style-type: none"> •Take off contaminated clothing. •Rinse skin immediately with plenty of water for 15-20 minutes. •Call a poison control center or doctor immediately for treatment advice.
If in eyes	<ul style="list-style-type: none"> •Hold eye open and rinse slowly and gently with water for 15-20 minutes. •Remove contact lenses, if present, after the first 5 minutes, then continue rinsing eye. •Call a poison control center or doctor immediately for treatment advice.

5. On the PCO label, revise your "**USE RESTRICTIONS**", "**SELECTION OF TREATMENT AREAS**", and "**APPICATION DIRECTIONS**" as follows:

USE RESTRICTIONS: This product may only be used to control Norway rats, roof rats and house mice in and around homes and residential buildings, food processing facilities, industrial, commercial, agricultural and public buildings, and similar man-made structures. It may also be used in transport vehicles (ships, trains, aircraft) and in and around related port or terminal buildings. **Do not apply further than 50 feet from buildings.** Do not place near or inside ventilation duct openings. Do not contaminate water, food, feedstuffs, food or feed handling equipment, or milk or meat handling equipment or surfaces that come into direct contact with food or feed. When used in USDA inspected facilities, this product must be applied in tamper-resistant bait stations. Do not broadcast bait. Do not use this product in sewers.

Do not sell this product in individual containers holding less than 16 pounds of bait.

SELECTION OF TREATMENT AREAS: Determine areas where rats and/or house mice will most likely find and consume bait. Generally, these are along walls, by gnawed openings, in corners and concealed places, between floors or walls, in or beside burrows, or in locations where rats and/or house mice or their signs have been observed. Remove as much alternative food as possible.

APPLICATION DIRECTIONS:

Rats: Apply 3 to 16 blocks per placement, usually spaced 15 to 30 feet apart. Maintain a constant supply of fresh bait for 10 days or until signs of rat activity cease.

House Mice: Apply 1 block per placement, usually spaced 8 to 12 feet apart. Up to 2 blocks may be needed at points of very high house mouse activity. Maintain a constant supply of fresh bait for 15 days or until signs of house mouse activity cease.

Follow-up: Replace contaminated or spoiled bait immediately. Wearing waterproof gloves, collect and properly dispose of all visible dead animals and leftover bait. To discourage reinfestation, limit sources of rodent food, water and harborage as much as possible. If reinfestation does occur, repeat treatment. For a continuous infestation, set up permanent bait stations and replenish bait as needed.

6. Revise your “**PRECAUTIONARY STATEMENTS**” for all labels as follows:

PRECAUTIONARY STATEMENTS

Hazards to Humans and Domestic Animals

CAUTION: Harmful if swallowed or absorbed through the skin. Causes moderate eye irritation. Keep away from children, domestic animals and pets. Do not get in eyes, on skin, or on clothing.

All handlers (including applicators) must wear long-sleeved shirt, long pants, shoes, socks, and water-proof gloves. Any person who retrieves carcasses or unused bait following application of this product must wear waterproof gloves.

User Safety Requirements

Follow manufacturer’s instruction for cleaning/maintaining PPE. If no such instructions for washables, use detergent and hot water. Keep and wash PPE separately from other laundry. Remove PPE immediately after handling this product. Wash the outside of gloves before removing. As soon as possible, wash hands thoroughly after applying bait and before eating, drinking, chewing gum, using tobacco or using the toilet and change into clean clothing.

Environmental Hazards

This product is extremely toxic to mammals and birds. Dogs and other predatory and scavenging mammals and birds might be poisoned if they feed upon animals that have eaten this bait. Only use indoors and in burrows leading indoors. Do not contaminate water when disposing of equipment wash water or rinsate.

7. On the "INNER CONTAINER LABEL" of the PCO label, change "INDIVIDUAL SALE IS PROHIBITED BY LAW" to "IT IS ILLEGAL TO SELL THIS PRODUCT IN PACKAGES HOLDING LESS THAN 16 POUNDS OF BAIT." and place on the Front Panel.

Note: If the Outer and Inner Container Labels are identical, except for the package sizes, submit a single "PCO, Outer and Inner Container Labels" with the following text, in brackets, on the Front Panel:

[For the "PCO, Inner Container Label" for packages holding 2 to 10lb of bait, add the following text: "IT IS ILLEGAL TO SELL THIS PRODUCT IN PACKAGES HOLDING LESS THAN 16 POUNDS OF BAIT."]

8. On the Agricultural Building label, revise your "USE RESTRICTIONS", "SELECTION OF TREATMENT AREAS", and "APPLICATION DIRECTIONS" as follows:

USE RESTRICTIONS: This product may only be used to control Norway rats, roof rats and house mice in and around agricultural buildings. **Do not apply further than 50 feet from buildings.** Do not use in homes or other human residences. Do not place near or inside ventilation duct openings. Do not contaminate water, food, feedstuffs, food or feed handling equipment, or milk or meat handling equipment or surfaces that come into direct contact with food or feed. When used in USDA inspected facilities, this product must be applied in tamper-resistant bait stations. Do not broadcast bait. Do not use this product in sewers.

Do not sell this product in individual containers holding less than 8 pounds of bait.

SELECTION OF TREATMENT AREAS: Determine areas where rats and/or house mice will most likely find and consume bait. Generally, these are along walls, by gnawed openings, in corners and concealed places, between floors or walls, in or beside burrows, or in locations where rats and/or house mice or their signs have been observed. Remove as much alternative food as possible.

APPLICATION DIRECTIONS:

Rats: Apply 3 to 16 blocks per placement, usually spaced 15 to 30 feet apart. Maintain a constant supply of fresh bait for 10 days or until signs of rat activity cease.

House Mice: Apply 1 block per placement, usually spaced 8 to 12 feet apart. Up to 2 blocks may be needed at points of very high house mouse activity. Maintain a constant supply of fresh bait for 15 days or until signs of house mouse activity cease.

Follow-up: Replace contaminated or spoiled bait immediately. Wearing waterproof gloves, collect and properly dispose of all visible dead animals and leftover bait. To discourage reinfestation, limit sources of rodent food, water and harborage as much as possible. If reinfestation does occur, repeat treatment. For a continuous infestation, set up permanent bait stations and replenish bait as needed.

- 9. On the “**INNER CONTAINER LABEL**” of the Agricultural Building label, change “**INDIVIDUAL SALE IS PROHIBITED BY LAW**” to “**IT IS ILLEGAL TO SELL THIS PRODUCT IN PACKAGES HOLDING LESS THAN 8 POUNDS OF BAIT.**” and place on the Front Panel.

Note: If the Outer and Inner Container Labels are identical, except for the package sizes, just submit a single “PCO, Outer and Inner Container Labels” with the following text, in brackets, on the Front Panel:

[For the “Agricultural Buildings, Inner Container Label” holding 2 to 4lb of bait, add the following text: “**IT IS ILLEGAL TO SELL THIS PRODUCT IN PACKAGES HOLDING LESS THAN 16 POUNDS OF BAIT.**”]

- 10. Under “**OPTIONAL MARKETING STATEMENTS**”, make the following changes:
 - a. Delete the following claims as your efficacy tests contained no data on bait weathering:
 - Mold and Moisture Resistant
 - All-Weather Blox
 - All-Weather
 - All-Weather formula
 - b. Change “Biomarker” to “Lumitrack”. Add the qualifying text, “in low light conditions” for any marketing claims associated with “Lumitrack”.
 - c. Change “Can be used indoors or out” to “Can be used indoors or out (within 50 ft of buildings)”.
 - d. Change “For use in and around homes and buildings” to “For use in and around (within 50 ft of) homes and buildings”.
 - e. Delete the following claims:
 - 1) “Can kill in a single feeding”
 - 2) “For moderate infestations”
 - 3) “Our most economical single feed bait (rodenticide)”.
 - 4) “Our lowest cost single feed bait (rodenticide)”.
 - 5) “Ideal maintenance bait”.
 - 6) “Maintenance bait”.
 - 7) “Maintenance”.
 - 8) “Use for maintenance or clean out”.
- 11. Under “**OPTIONAL GRAPHICS WITHOUT TEXT**”, delete picture of 4 blocks or add a picture of a Norway or roof rat.

6/29

B. within 15 months of registration, submit the following confirmatory product specific chemistry data for this product:

1. Starting Materials (830.1600)
2. Formulation Process (830.1550)

The Confidential Statement of Formula (CSF) dated May 21, 2010, is acceptable. All other versions are obsolete.

With the above revisions, this product is in full compliance with the Agency's revised May 28, 2008 "Risk Mitigation Decision for Ten Rodenticides" and is consistent with the 1998 Rodenticide Cluster Reregistration Eligibility Decision (RED) document.

Reference to Website on Label

Should you wish to add a reference to the company's website on your label, please be aware that the website becomes labeling under the Federal Insecticide Fungicide and Rodenticide Act and is subject to review by the Agency. If the website is false or misleading, the product would be misbranded and unlawful to sell or distribute under FIFRA section 12(a)(1)(E). 40 CFR 156.10(a)(5) list examples of statements EPA may consider false or misleading. In addition, **regardless of whether a website is referenced on your product's label**, claims made on the website may not substantially differ from those claims approved through the registration process. Therefore should the Agency find or if it is brought to our attention that a website contains false or misleading statements or claims substantially differing from the EPA approved registration, the website will be referred to the EPA's Office of Enforcement and Compliance Assurance.

Terms/Conditions of Sale/Distribution (for Agricultural Building Only Use)

The registrant must not sell or distribute the product in a manner that results in sale in stores oriented towards residential consumers (e.g., grocery, drug, hardware, home improvement stores). The registrant may sell or distribute the product in a manner that results in sale in stores oriented towards agricultural consumers (i.e., farm, agricultural, tractor stores).

This product may not be sold in packaging that holds less than 8 pounds of bait.

Terms/Conditions of Sale/Distributions (for PCO Use)

The registrant must not sell or distribute the product in a manner that results in sale in stores oriented towards residential consumers (e.g., grocery, drug, hardware, home improvement stores). The registrant may sell or distribute the product in a manner that results in sale in stores oriented towards agricultural consumers (i.e., farm, agricultural, tractor stores) and pest control operators.

This product may not be sold in packaging that holds less than 16 pounds of bait.

If these conditions are not complied with, the registration will be subject to cancellation in accordance with FIFRA section 6(e). Your release for shipment of the product constitutes acceptance of these conditions.

7/27

A stamped copy of the label is enclosed. If you have any questions, please contact Dan Peacock by phone (703-305-5407) or E-Mail (peacock.dan@epa.gov).

Enclosures:

1. Stamped Label
2. Minimum Type Sizes for Final Printed Label

Dan Peacock, Flash Drive, 16gb, E:\4G Dan\Doc\Word\Bromadiolone\Registration
Actions\12455-RGG, -133\12455-RGG, -133, Not of Reg, RMD, PCO + AG Buildings, 12-21-
2010.doc

8/29

Pest Control Operator Use Label

OUTER CONTAINER - COMPLETE LABEL - PACKAGE WEIGHT 16 LB. OR GREATER

**CONTRAC[®]
BIOMARKER BLOX**

KILLS RATS AND MICE

KILLS WARFARIN RESISTANT NORWAY RATS

Norway rats, roof rats, and house mice may consume a lethal dose in one night's feeding with first dead rodents appearing four or five days after feeding begins.

ACTIVE INGREDIENT:

Bromadiolone (CAS #28772-56-7):0.005%

INERT INGREDIENTS*:..... 99.995%

100.000%

*Contains Denatonium Benzoate

**ACCEPTED
With COMMENTS
In EPA Letter Dated:**

DEC 21 2010

**Under the Federal Insecticide, Fungicide
and Rodenticide Act, As amended, for the
pesticide Registered under EPA Reg. No:**

12455-133

**KEEP OUT OF REACH OF CHILDREN
CAUTION**

FIRST AID

HAVE LABEL WITH YOU WHEN OBTAINING TREATMENT ADVICE

IF SWALLOWED:

- Call a poison control center, doctor, or 1-877-854-2494, or 1-800-858-7378* immediately for treatment advice.
- Have person sip a glass of water if able to swallow.
- Do not induce vomiting unless told to do so by the poison control center or doctor.

IF ON SKIN:

- Wash with plenty of soap and water.

IF IN EYES:

- Hold eye open and rinse slowly and gently with water for 15-20 minutes.
- Remove contact lenses, if present, after the first 5 minutes, then continue rinsing eye.
- Call a poison control center or doctor for treatment advice.

* Also call this number for information on health concerns and pesticide incidents.

NOTE TO PHYSICIAN

If swallowed or absorbed through the skin, this material may reduce the clotting ability of the blood and cause bleeding. If ingested, administer Vitamin K₁ intramuscularly or orally. Repeat as necessary based on monitoring of prothrombin times.

012455-00RGG.20100524

9/24

Pest Control Operator Use Label

TREATMENT FOR PET POISONING
 If animal eats bait, call veterinarian at once.
NOTE TO VETERINARIAN
Anticoagulant Bromadiolone: For animals ingesting bait and/or showing poisoning signs (bleeding or elevated prothrombin times), give Vitamin K₁. If needed, check prothrombin times every 3 days until values return to normal (up to 30 days). In severe cases, blood transfusions may be needed.

See Back/Side Panel for First Aid and additional precautionary statements.

NET WEIGHT:
16 lb. – 50 lb. containers

BATCH CODE:

Manufactured by:



Bell Laboratories, Inc.
3699 Kinsman Blvd.
Madison, WI 53704

EPA REG. NO. 12455-¹³³~~xxx~~

EPA EST. NO. 12455-WI-1

DIRECTIONS FOR USE

It is a violation of Federal law to use this product in a manner inconsistent with its labeling.

READ THIS LABEL: Read this entire label and follow all use directions and use precautions. Use only for sites, pests, and application methods described on this label.

IMPORTANT: Do not expose children, pets, or nontarget animals to rodenticides. To help to prevent accidents:

1. Store unused product out of reach of children and pets.
2. Apply bait in locations out of reach of children, pets, domestic animals and nontarget wildlife, or in tamper-resistant bait stations. These stations must be resistant to destruction by dogs and by children under six years of age, and must be used in a manner that prevents such children from reaching into bait compartments and obtaining bait. If bait can be shaken from bait stations when they are lifted, units must be secured or otherwise immobilized. Stronger bait stations are needed in areas open to hoofed livestock, raccoons, bears, or other potentially destructive animals, or in areas prone to vandalism.
3. Dispose of product container and unused, spoiled, or unconsumed bait as specified on this label.

Note: Bait stations are mandatory for outdoor-above-ground use. Tamper-resistant bait stations must be used if children, pets, non-target mammals, or birds may access the bait.

USE RESTRICTIONS: For control only of Norway rats, roof rats, and house mice in sites identified below for **Urban Areas** and **Non-urban Areas**. Do not place near or inside ventilation duct openings. Do not contaminate water, food, feedstuffs, food or feed handling equipment, or milk or meat handling equipment or surfaces that come into direct contact with food. Do not broadcast bait. When used in USDA inspected facilities, this product must be applied in tamper-resistant bait stations.

Pest Control Operator Use Label

URBAN AREAS: This product may only be used in and around homes, industrial, commercial, and public buildings; in transport vehicles (ships, trains, aircraft) and in and around related port or terminal buildings; and in alleys. Do not apply further than 50 feet from buildings. Do not use this product in sewers.

NON-URBAN AREAS: This product may only be used inside of homes and agricultural buildings.

Do not sell this product in individual containers holding less than 16 pounds of bait.

SELECTION OF TREATMENT AREAS: Determine areas where rats or mice will most likely find and consume the bait. Generally, these areas are along walls, by gnawed openings, in or beside burrows, in corners and concealed places, between floors and walls, or in locations where rodents or their signs have been seen. Protect bait from rain and snow. Remove as much alternative food as possible.

APPLICATION DIRECTIONS:

RATS: Place 3 to 16 bait blocks (usually at intervals of 15 to 30 feet) per placement. Maintain an uninterrupted supply of fresh bait for at least 10 days or until signs of rat activity cease.

HOUSE MICE: Place 1 block per placement. Space placements at 8 to 12 foot intervals. Two blocks may be needed at points of very high mouse activity. Maintain an uninterrupted supply of fresh bait for at least 15 days or until signs of mouse activity cease.

FOLLOW-UP: Replace contaminated or spoiled bait immediately. Using gloves, collect and dispose of all dead, exposed animals and leftover bait. To prevent reinfestation, limit sources of rodent food, water, and harborage as much as possible. If reinfestation does occur, repeat treatment. Where a continuous source of infestation is present, establish permanent bait stations and replenish as needed.

PRECAUTIONARY STATEMENTS

Hazards to Humans and Domestic Animals

CAUTION: Harmful if swallowed or absorbed through the skin. Keep away from children, domestic animals and pets. Do not get in eyes, on skin or on clothing.

All handlers (including applicators) must wear: shoes plus socks, and gloves. Any person who retrieves carcasses or unused bait following application of this product must wear gloves.

User Safety Requirements

Follow manufacturer's instruction for cleaning/maintaining PPE. If no such instructions for washables, use detergent and hot water. Keep and wash PPE separately from other laundry. Remove PPE immediately after handling this product. Wash the outside of gloves before removing. As soon as possible, wash hands thoroughly after applying bait and before eating, drinking, chewing gum, using tobacco or using the toilet and change into clean clothing.

ENVIRONMENTAL HAZARDS

This product is toxic to fish, birds and other wildlife. Dogs and predatory and scavenging mammals and birds might be poisoned if they feed upon animals that have eaten this bait. Do not apply this product directly to water or to areas where surface water is present or to intertidal areas below the mean high water mark.

11/29

Pest Control Operator Use Label

STORAGE AND DISPOSAL

Do not contaminate water, food or feed by storage or disposal.

Pesticide Storage: Store only in original container in a cool, dry place inaccessible to children and pets. Keep containers closed and away from other chemicals.

Pesticide Disposal: Wastes resulting from the use of this product may be placed in trash or delivered to an approved waste disposal facility.

Container Handling: Nonrefillable container. Do not reuse or refill this container. Offer for recycling, if available. Dispose of empty container by placing in trash, at an approved waste disposal facility or by incineration.

WARRANTY: To the extent consistent with applicable law, seller makes no warranty, expressed or implied, concerning the use of this product other than indicated on the label. Buyer assumes all risk of use and/or handling of this material when such use and/or handling is contrary to label instructions.

INNER CONTAINER - COMPLETE LABEL - PACKAGE WEIGHT 2 LB. TO 10 LB.

**CONTRAC®
BIOMARKER BLOX**

KILLS RATS AND MICE

KILLS WARFARIN RESISTANT NORWAY RATS

Norway rats, roof rats, and house mice may consume a lethal dose in one night's feeding with first dead rodents appearing four or five days after feeding begins.

ACTIVE INGREDIENT:

Bromadiolone (CAS #28772-56-7):0.005%

INERT INGREDIENTS* : 99.995%
100.000%

*Contains Denatonium Benzoate

**KEEP OUT OF REACH OF CHILDREN
CAUTION**

R/2f

Pest Control Operator Use Label

FIRST AID

HAVE LABEL WITH YOU WHEN OBTAINING TREATMENT ADVICE

IF SWALLOWED:

- Call a poison control center, doctor, or 1-877-854-2494, or 1-800-858-7378* immediately for treatment advice.
- Have person sip a glass of water if able to swallow.
- Do not induce vomiting unless told to do so by the poison control center or doctor.

IF ON SKIN:

- Wash with plenty of soap and water.

IF IN EYES:

- Hold eye open and rinse slowly and gently with water for 15-20 minutes.
- Remove contact lenses, if present, after the first 5 minutes, then continue rinsing eye.
- Call a poison control center or doctor for treatment advice.

* Also call this number for information on health concerns and pesticide incidents.

NOTE TO PHYSICIAN

If swallowed or absorbed through the skin, this material may reduce the clotting ability of the blood and cause bleeding. If ingested, administer Vitamin K₁ intramuscularly or orally. Repeat as necessary based on monitoring of prothrombin times.

TREATMENT FOR PET POISONING

If animal eats bait, call veterinarian at once.

NOTE TO VETERINARIAN

Anticoagulant Bromadiolone: For animals ingesting bait and/or showing poisoning signs (bleeding or elevated prothrombin times), give Vitamin K₁. If needed, check prothrombin times every 3 days until values return to normal (up to 30 days). In severe cases, blood transfusions may be needed.

See Back/Side Panel for First Aid and additional precautionary statements.

NET WEIGHT: 2 lb. to 10 lb. containers

INDIVIDUAL SALE IS PROHIBITED BY LAW

Manufactured by:



Bell Laboratories, Inc.
3699 Kinsman Blvd.
Madison, WI 53704

EPA REG. NO. 12455- xxx

EPA EST. NO. 12455-WI-1

13/24

Pest Control Operator Use Label

DIRECTIONS FOR USE

It is a violation of Federal law to use this product in a manner inconsistent with its labeling.

READ THIS LABEL: Read this entire label and follow all use directions and use precautions. Use only for sites, pests, and application methods described on this label.

IMPORTANT: Do not expose children, pets, or nontarget animals to rodenticides. To help to prevent accidents:

1. Store unused product out of reach of children and pets.
2. Apply bait in locations out of reach of children, pets, domestic animals and nontarget wildlife, or in tamper-resistant bait stations. These stations must be resistant to destruction by dogs and by children under six years of age, and must be used in a manner that prevents such children from reaching into bait compartments and obtaining bait. If bait can be shaken from bait stations when they are lifted, units must be secured or otherwise immobilized. Stronger bait stations are needed in areas open to hooved livestock, raccoons, bears, or other potentially destructive animals, or in areas prone to vandalism.
3. Dispose of product container and unused, spoiled, or unconsumed bait as specified on this label.

Note: Bait stations are mandatory for outdoor-above-ground use. Tamper-resistant bait stations must be used if children, pets, non-target mammals, or birds may access the bait.

USE RESTRICTIONS: For control only of Norway rats, roof rats, and house mice in sites identified below for **Urban Areas** and **Non-urban Areas**. Do not place near or inside ventilation duct openings. Do not contaminate water, food, feedstuffs, food or feed handling equipment, or milk or meat handling equipment or surfaces that come into direct contact with food. Do not broadcast bait. When used in USDA inspected facilities, this product must be applied in tamper-resistant bait stations.

URBAN AREAS: This product may only be used in and around homes, industrial, commercial, and public buildings; in transport vehicles (ships, trains, aircraft) and in and around related port or terminal buildings; and in alleys. Do not apply further than 50 feet from buildings. Do not use this product in sewers.

NON-URBAN AREAS: This product may only be used inside of homes and agricultural buildings.

Do not sell this product in individual containers holding less than 16 pounds of bait.

SELECTION OF TREATMENT AREAS: Determine areas where rats or mice will most likely find and consume the bait. Generally, these areas are along walls, by gnawed openings, in or beside burrows, in corners and concealed places, between floors and walls, or in locations where rodents or their signs have been seen. Protect bait from rain and snow. Remove as much alternative food as possible.

APPLICATION DIRECTIONS:

RATS: Place 3 to 16 bait blocks (usually at intervals of 15 to 30 feet) per placement. Maintain an uninterrupted supply of fresh bait for at least 10 days or until signs of rat activity cease.

HOUSE MICE: Place 1 block per placement. Space placements at 8 to 12 foot intervals. Two blocks may be needed at points of very high mouse activity. Maintain an uninterrupted supply of fresh bait for at least 15 days or until signs of mouse activity cease.

Pest Control Operator Use Label

FOLLOW-UP: Replace contaminated or spoiled bait immediately. Using gloves, collect and dispose of all dead, exposed animals and leftover bait. To prevent reinfestation, limit sources of rodent food, water, and harborage as much as possible. If reinfestation does occur, repeat treatment. Where a continuous source of infestation is present, establish permanent bait stations and replenish as needed.

PRECAUTIONARY STATEMENTS

Hazards to Humans and Domestic Animals

CAUTION: Harmful if swallowed or absorbed through the skin. Keep away from children, domestic animals and pets. Do not get in eyes, on skin or on clothing.

All handlers (including applicators) must wear: shoes plus socks, and gloves. Any person who retrieves carcasses or unused bait following application of this product must wear gloves.

User Safety Requirements

Follow manufacturer's instruction for cleaning/maintaining PPE. If no such instructions for washables, use detergent and hot water. Keep and wash PPE separately from other laundry. Remove PPE immediately after handling this product. Wash the outside of gloves before removing. As soon as possible, wash hands thoroughly after applying bait and before eating, drinking, chewing gum, using tobacco or using the toilet and change into clean clothing.

ENVIRONMENTAL HAZARDS

This product is toxic to fish, birds and other wildlife. Dogs and predatory and scavenging mammals and birds might be poisoned if they feed upon animals that have eaten this bait. Do not apply this product directly to water or to areas where surface water is present or to intertidal areas below the mean high water mark.

STORAGE AND DISPOSAL

Do not contaminate water, food or feed by storage or disposal.

Pesticide Storage: Store only in original container in a cool, dry place inaccessible to children and pets. Keep containers closed and away from other chemicals.

Pesticide Disposal: Wastes resulting from the use of this product may be placed in trash or delivered to an approved waste disposal facility.

Container Handling: Nonrefillable container. Do not reuse or refill this container. Offer for recycling, if available. Dispose of empty container by placing in trash, at an approved waste disposal facility or by incineration.

WARRANTY: To the extent consistent with applicable law, seller makes no warranty, expressed or implied, concerning the use of this product other than indicated on the label. Buyer assumes all risk of use and/or handling of this material when such use and/or handling is contrary to label instructions.

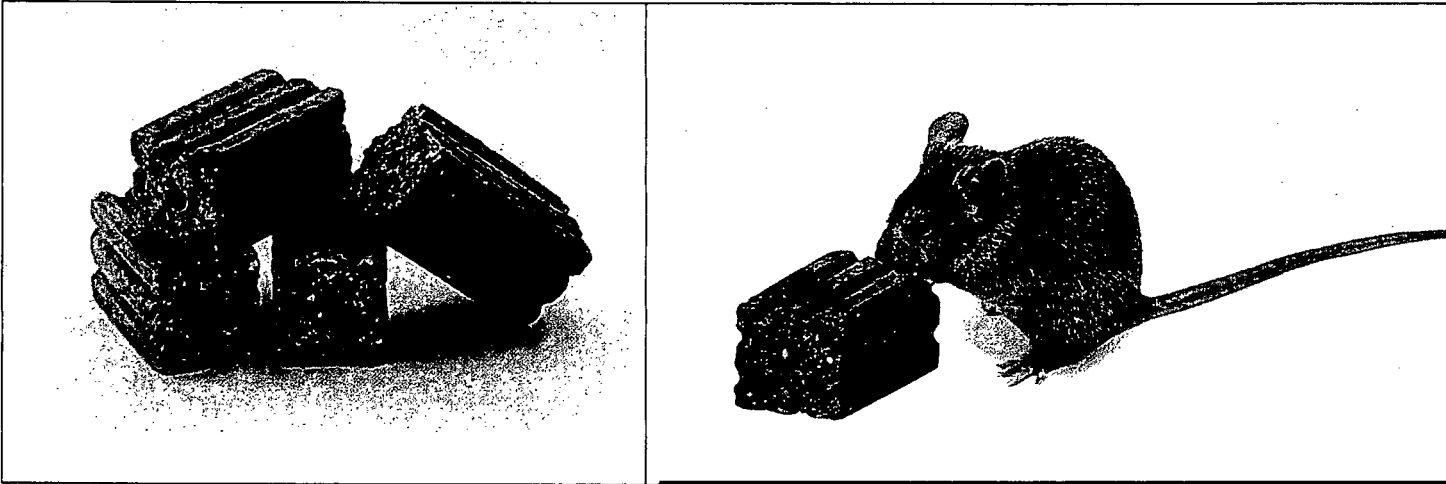
Pest Control Operator Use Label

OPTIONAL MARKETING STATEMENTS:

Mold and Moisture Resistant
All-Weather Blox
Ready to Use Blox
Includes Biomarker
With Biomarker
With Special Biomarker
Contains Biomarker Additive
Biomarker Luminesces Under Black Light
Biomarker is visible under black light
Biomarker makes rodent feces glow under black light
Biomarker helps track rodent movement and identify harborage areas
By making feces easier to see, Biomarker makes rodent identification easier
By making feces easier to see, Biomarker helps determine the size of an infestation
Biomarker increases serviceability in low light conditions
Biomarker helps determine amount of bait consumption in low light conditions
Biomarker makes bait easier to monitor in low light conditions
Biomarker improves serviceability by aiding in visual identification
Biomarker simplifies identification of rodent pathways
Biomarker aids in locating entry holes for rodent proofing
Biomarker aids in inspection of inbound pallets
Biomarker aids in identification of rodent activity on inbound pallets
All-Weather Contrace Biomarker Blox has an updated preservative system
All-Weather Contrace Biomarker Blox contains a preservative system which helps maintain freshness
All-Weather Block Bait
Ready to Use 1 oz. Block Bait
All-weather formula
With bromadiolone
Multi-edge shape gives rodents gnawing edges
Can be used indoors or out
For use in and around homes and buildings
Made in USA
Blox
All-Weather
Can kill in a single feeding
For moderate infestations
Our most economical single feed bait (rodenticide)
Our lowest cost single feed bait (rodenticide)
Ideal maintenance bait
Maintenance bait
Maintenance
Use for maintenance or clean out

Pest Control Operator Use Label

OPTIONAL GRAPHICS WITHOUT TEXT:



17/24

AGRICULTURAL USE LABEL

OUTER CONTAINER - COMPLETE LABEL - PACKAGE WEIGHT 8 LB. OR GREATER

**CONTRAC®
BIOMARKER BLOX**

For Use In and Around Agricultural Buildings Only

KILLS RATS AND MICE

KILLS WARFARIN RESISTANT NORWAY RATS

Norway rats and house mice may consume a lethal dose in one night's feeding with first dead rodents appearing four or five days after feeding begins.

ACTIVE INGREDIENT:

Bromadiolone (CAS #28772-56-7):0.005%

INERT INGREDIENTS*..... 99.995%

100.000%

*Contains Denatonium Benzoate

KEEP OUT OF REACH OF CHILDREN

CAUTION

FIRST AID

HAVE LABEL WITH YOU WHEN OBTAINING TREATMENT ADVICE

IF SWALLOWED:

- Call a poison control center, doctor, or 1-877-854-2494, or 1-800-858-7378* immediately for treatment advice.
- Have person sip a glass of water if able to swallow.
- Do not induce vomiting unless told to do so by the poison control center or doctor.

IF ON SKIN:

- Wash with plenty of soap and water.

NOTE TO PHYSICIAN

If swallowed, this material may reduce the clotting ability of the blood and cause bleeding. If ingested, administer Vitamin K₁ intramuscularly or orally as indicated in bishydroxycoumarin overdoses. Repeat as necessary based on monitoring of prothrombin times.

* Also call this number for information on health concerns and pesticide incidents.

18/34

AGRICULTURAL USE LABEL

TREATMENT FOR PET POISONING

If animal eats bait, call veterinarian at once.

NOTE TO VETERINARIAN

Anticoagulant Bromadiolone: For animals ingesting bait and/or showing poisoning signs (bleeding or elevated prothrombin times), give Vitamin K₁. If needed, check prothrombin times every 3 days until values return to normal (up to 30 days). In severe cases, blood transfusions may be needed.

See Back/Side Panel for First Aid and additional precautionary statements.

NET WEIGHT:

8 lb. – 50 lb.

Manufactured by:

Batch Code:



Bell Laboratories, Inc.
3699 Kinsman Blvd.
Madison, WI 53704

EPA REG. NO. 12455-xxx

EPA EST. NO. 12455-WI-1

DIRECTIONS FOR USE

It is a violation of Federal law to use this product in a manner inconsistent with its labeling.

READ THIS LABEL: Read this entire label and follow all use directions and use precautions. Use only for sites, pests, and application methods described on this label.

IMPORTANT: Do not expose children, pets, or nontarget animals to rodenticides. To help to prevent accidents:

1. Store unused product out of reach of children and pets.
2. Apply bait in locations out of reach of children, pets, domestic animals and nontarget wildlife, or in tamper-resistant bait stations. These stations must be resistant to destruction by dogs and by children under six years of age, and must be used in a manner that prevents such children from reaching into bait compartments and obtaining bait. If bait can be shaken from bait stations when they are lifted, units must be secured or otherwise immobilized. Stronger bait stations are needed in areas open to hooved livestock, raccoons, bears, or other potentially destructive animals, or in areas prone to vandalism.
3. Dispose of product container and unused, spoiled, or unconsumed bait as specified on this label.

Note: Bait stations are mandatory for outdoor-above-ground use. Tamper-resistant bait stations must be used if children, pets, non-target mammals, or birds may access the bait.

USE RESTRICTIONS: For control of Norway rats, roof rats, and house mice. For use in and around agricultural buildings only. Do not apply further than 50 feet from agricultural buildings. Do not use in homes or other human residences. Do not place near or inside ventilation duct openings. Do not contaminate water, food, feedstuffs, food or feed handling equipment, or milk or meat handling equipment or surfaces that come into direct contact with food. Do not broadcast bait. When used in USDA inspected facilities, this product must be applied in tamper-resistant bait stations.

Do not sell this product in individual containers holding less than 8 pounds of bait.

AGRICULTURAL USE LABEL

SELECTION OF TREATMENT AREAS: Determine areas where rats or mice will most likely find and consume the bait. Generally, these areas are along walls, by gnawed openings, in or beside burrows, in corners and concealed places, between floors and walls, or in locations where rodents or their signs have been seen. Protect bait from rain and snow. Remove as much alternative food as possible.

APPLICATION DIRECTIONS:

RATS: Place 3 to 16 bait blocks (usually at intervals of 15 to 30 feet) per placement. Maintain an uninterrupted supply of fresh bait for at least 10 days or until signs of rat activity cease.

HOUSE MICE: Place 1 block per placement. Space placements at 8 to 12 foot intervals. Two blocks may be needed at points of very high mouse activity. Maintain an uninterrupted supply of fresh bait for at least 15 days or until signs of mouse activity cease.

FOLLOW-UP: Replace contaminated or spoiled bait immediately. Using gloves, collect and dispose of all dead, exposed animals and leftover bait. To prevent reinfestation, limit sources of rodent food, water, and harborage as much as possible. If reinfestation does occur, repeat treatment. Where a continuous source of infestation is present, establish permanent bait stations and replenish as needed.

PRECAUTIONARY STATEMENTS

Hazards to Humans and Domestic Animals

CAUTION: Harmful if swallowed or absorbed through the skin. Keep away from children, domestic animals and pets. Do not get in eyes, on skin or on clothing.

All handlers (including applicators) must wear shoes plus socks, and gloves. Any person who retrieves carcasses or unused bait following application of this product must wear gloves.

User Safety Requirements

Follow manufacturer's instruction for cleaning/maintaining PPE. If no such instructions for washables, use detergent and hot water. Keep and wash PPE separately from other laundry. Remove PPE immediately after handling this product. Wash the outside of gloves before removing. As soon as possible, wash hands thoroughly after applying bait and before eating, drinking, chewing gum, using tobacco or using the toilet and change into clean clothing.

ENVIRONMENTAL HAZARDS

This product is toxic to fish, birds and other wildlife. Dogs and other predatory and scavenging mammals and birds might be poisoned if they feed upon animals that have eaten this bait. Do not apply this product directly to water or to areas where surface water is present or to intertidal areas below the mean high water mark.

STORAGE AND DISPOSAL

Do not contaminate water, food or feed by storage or disposal.

Pesticide Storage: Store only in original container in a cool, dry place inaccessible to children and pets. Keep containers closed and away from other chemicals.

Pesticide Disposal: Wastes resulting from the use of this product may be placed in trash or delivered to an approved waste disposal facility.

Container Handling: Nonrefillable container. Do not reuse or refill this container. Offer for recycling, if available. Dispose of empty container by placing in trash, at an approved waste disposal facility or by incineration.

AGRICULTURAL USE LABEL

WARRANTY: To the extent consistent with applicable law, seller makes no warranty, expressed or implied, concerning the use of this product other than indicated on the label. Buyer assumes all risk of use and/or handling of this material when such use and/or handling is contrary to label instructions.

INNER CONTAINER - COMPLETE LABEL - PACKAGE WEIGHT 2 TO 4 LB.

CONTRAC[®]
BIOMARKER BLOX

For Use In and Around Agricultural Buildings Only

KILLS RATS AND MICE

KILLS WARFARIN RESISTANT NORWAY RATS

Norway rats and house mice may consume a lethal dose in one night's feeding with first dead rodents appearing four or five days after feeding begins.

ACTIVE INGREDIENT:

Bromadiolone (CAS #28772-56-7):0.005%

INERT INGREDIENTS*..... 99.995%

100.000%

*Contains Denatonium Benzoate

KEEP OUT OF REACH OF CHILDREN

CAUTION

FIRST AID

HAVE LABEL WITH YOU WHEN OBTAINING TREATMENT ADVICE

IF SWALLOWED:

- Call a poison control center, doctor, or 1-877-854-2494, or 1-800-858-7378* immediately for treatment advice.
- Have person sip a glass of water if able to swallow.
- Do not induce vomiting unless told to do so by the poison control center or doctor.

IF ON SKIN:

- Wash with plenty of soap and water.

NOTE TO PHYSICIAN

If swallowed, this material may reduce the clotting ability of the blood and cause bleeding. If ingested, administer Vitamin K₁ intramuscularly or orally as indicated in bishydroxycoumarin overdoses. Repeat as necessary based on monitoring of prothrombin times.

* Also call this number for information on health concerns and pesticide incidents.

21/24

AGRICULTURAL USE LABEL

TREATMENT FOR PET POISONING

If animal eats bait, call veterinarian at once.

NOTE TO VETERINARIAN

Anticoagulant Bromadiolone: For animals ingesting bait and/or showing poisoning signs (bleeding or elevated prothrombin times), give Vitamin K₁. If needed, check prothrombin times every 3 days until values return to normal (up to 30 days). In severe cases, blood transfusions may be needed.

See Back/Side Panel for First Aid and additional precautionary statements.

NET WEIGHT: 2 - 4 lb.

INDIVIDUAL SALE IS PROHIBITED BY LAW

Manufactured by:



Bell Laboratories, Inc.
3699 Kinsman Blvd.
Madison, WI 53704

EPA REG. NO. 12455-xxx

EPA EST. NO. 12455-WI-1

DIRECTIONS FOR USE

It is a violation of Federal law to use this product in a manner inconsistent with its labeling.

READ THIS LABEL: Read this entire label and follow all use directions and use precautions. Use only for sites, pests, and application methods described on this label.

IMPORTANT: Do not expose children, pets, or nontarget animals to rodenticides. To help to prevent accidents:

1. Store unused product out of reach of children and pets.
2. Apply bait in locations out of reach of children, pets, domestic animals and nontarget wildlife, or in tamper-resistant bait stations. These stations must be resistant to destruction by dogs and by children under six years of age, and must be used in a manner that prevents such children from reaching into bait compartments and obtaining bait. If bait can be shaken from bait stations when they are lifted, units must be secured or otherwise immobilized. Stronger bait stations are needed in areas open to hooved livestock, raccoons, bears, or other potentially destructive animals, or in areas prone to vandalism.
3. Dispose of product container and unused, spoiled, or unconsumed bait as specified on this label.

Note: Bait stations are mandatory for outdoor-above-ground use. Tamper-resistant bait stations must be used if children, pets, non-target mammals, or birds may access the bait.

AGRICULTURAL USE LABEL

USE RESTRICTIONS: For control of Norway rats, roof rats, and house mice. For use in and around agricultural buildings only. Do not apply further than 50 feet from agricultural buildings. Do not use in homes or other human residences. Do not place near or inside ventilation duct openings. Do not contaminate water, food, feedstuffs, food or feed handling equipment, or milk or meat handling equipment or surfaces that come into direct contact with food. Do not broadcast bait. When used in USDA inspected facilities, this product must be applied in tamper-resistant bait stations.

Do not sell this product in individual containers holding less than 8 pounds of bait.

SELECTION OF TREATMENT AREAS: Determine areas where rats or mice will most likely find and consume the bait. Generally, these areas are along walls, by gnawed openings, in or beside burrows, in corners and concealed places, between floors and walls, or in locations where rodents or their signs have been seen. Protect bait from rain and snow. Remove as much alternative food as possible.

APPLICATION DIRECTIONS:

RATS: Place 3 to 16 bait blocks (usually at intervals of 15 to 30 feet) per placement. Maintain an uninterrupted supply of fresh bait for at least 10 days or until signs of rat activity cease.

HOUSE MICE: Place 1 block per placement. Space placements at 8 to 12 foot intervals. Two blocks may be needed at points of very high mouse activity. Maintain an uninterrupted supply of fresh bait for at least 15 days or until signs of mouse activity cease.

FOLLOW-UP: Replace contaminated or spoiled bait immediately. Using gloves, collect and dispose of all dead, exposed animals and leftover bait. To prevent reinfestation, limit sources of rodent food, water, and harborage as much as possible. If reinfestation does occur, repeat treatment. Where a continuous source of infestation is present, establish permanent bait stations and replenish as needed.

PRECAUTIONARY STATEMENTS

Hazards to Humans and Domestic Animals

CAUTION: Harmful if swallowed or absorbed through the skin. Keep away from children, domestic animals and pets. Do not get in eyes, on skin or on clothing.

All handlers (including applicators) must wear shoes plus socks, and gloves. Any person who retrieves carcasses or unused bait following application of this product must wear gloves.

User Safety Requirements

Follow manufacturer's instruction for cleaning/maintaining PPE. If no such instructions for washables, use detergent and hot water. Keep and wash PPE separately from other laundry. Remove PPE immediately after handling this product. Wash the outside of gloves before removing. As soon as possible, wash hands thoroughly after applying bait and before eating, drinking, chewing gum, using tobacco or using the toilet and change into clean clothing.

ENVIRONMENTAL HAZARDS

This product is toxic to fish, birds and other wildlife. Dogs and other predatory and scavenging mammals and birds might be poisoned if they feed upon animals that have eaten this bait. Do not apply this product directly to water or to areas where surface water is present or to intertidal areas below the mean high water mark.

AGRICULTURAL USE LABEL

STORAGE AND DISPOSAL

Do not contaminate water, food or feed by storage or disposal.

Pesticide Storage: Store only in original container in a cool, dry place inaccessible to children and pets. Keep containers closed and away from other chemicals.

Pesticide Disposal: Wastes resulting from the use of this product may be placed in trash or delivered to an approved waste disposal facility.

Container Handling: Nonrefillable container. Do not reuse or refill this container. Offer for recycling, if available. Dispose of empty container by placing in trash, at an approved waste disposal facility or by incineration.

WARRANTY: To the extent consistent with applicable law, seller makes no warranty, expressed or implied, concerning the use of this product other than indicated on the label. Buyer assumes all risk of use and/or handling of this material when such use and/or handling is contrary to label instructions.

OPTIONAL MARKETING STATEMENTS:

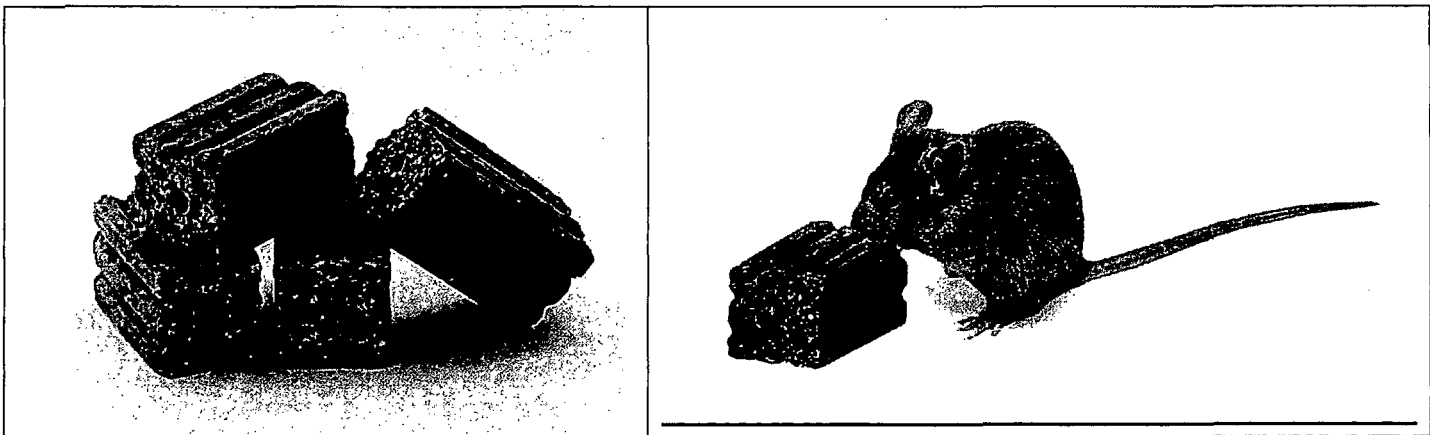
- Mold and Moisture Resistant
- All-Weather Bait Chunx
- Ready to Use Blox
- Includes Biomarker
- With Biomarker
- With Special Biomarker
- Contains Biomarker Additive
- Biomarker Luminesces Under Black Light
- Biomarker is visible under black light
- Biomarker makes rodent feces glow under black light
- Biomarker helps track rodent movement and identify harborage areas
- By making feces easier to see, Biomarker makes rodent identification easier
- By making feces easier to see, Biomarker helps determine the size of an infestation
- Biomarker increases serviceability in low light conditions
- Biomarker helps determine amount of bait consumption in low light conditions
- Biomarker makes bait easier to monitor in low light conditions
- Biomarker improves serviceability by aiding in visual identification
- Biomarker simplifies identification of rodent pathways
- Biomarker aids in locating entry holes for rodent proofing
- Biomarker aids in inspection of inbound pallets
- Biomarker aids in identification of rodent activity on inbound pallets
- All-Weather Contrac Biomarker Blox has an updated preservative system
- All-Weather Contrac Biomarker Blox contains a preservative system which helps maintain freshness
- Ready to Use 1 oz. Bait Chunx
- All-weather formula
- With bromadiolone
- Multi-edge shape gives rodents gnawing edges
- Can be used indoors or out

AGRICULTURAL USE LABEL

OPTIONAL MARKETING STATEMENTS (CONT'D.):

Made in USA
All-Weather
For moderate infestations
Our most economical single feed bait (rodenticide)
Our lowest cost single feed bait (rodenticide)
Ideal maintenance bait
Maintenance bait
Maintenance
Use for maintenance or clean out
Ready to Use 1 oz. Bait Chunx
All-Weather Formula
Multi-edge shape gives rodents gnawing edges
For use in and around agricultural buildings
Made in USA
Bait Chunx

OPTIONAL GRAPHICS WITHOUT TEXT:



Version 052410