

12455-132

11/26/2013

1/6

UNITED STATES ENVIRONMENTAL PROTECTION AGENCY
WASHINGTON, D.C. 20460



OFFICE OF CHEMICAL SAFETY
AND POLLUTION PREVENTION

Mr. John Lublinkhof
Bell Laboratories, Inc.
3699 Kinsman Blvd.
Madison, WI 53704

NOV 26 2013

Dear Mr. Lublinkhof:

Subject: Label revisions to add optional marketing claims regarding the number of target rodents killed per bait block
TOMCAT® BAIT CHUNX
EPA Registration No. 12455-132

The labeling referred to above, submitted in connection with registration under the Federal Insecticide, Fungicide, and Rodenticide Act, as amended, is acceptable. A stamped copy is enclosed for your records. Please submit one (1) final printed copy for the above mentioned label before releasing the product for shipment.

Note: Should you wish to add a reference to the company's website on your label, please be aware that the website becomes labeling under the Federal Insecticide Fungicide and Rodenticide Act and is subject to review by the Agency. If the website is false or misleading, the product would be misbranded and unlawful to sell or distribute under FIFRA section 12(a)(1)(E). 40 CFR 156.10(a)(5) list examples of statements EPA may consider false or misleading. In addition, **regardless of whether a website is referenced on your product's label**, claims made on the website may not substantially differ from those claims approved through the registration process. Therefore should the Agency find or if it is brought to our attention that a website contains false or misleading statements or claims substantially differing from the EPA approved registration, the website will be referred to the EPA's Office of Enforcement and Compliance Assurance.

If these conditions are not complied with, the registration will be subject to cancellation in accordance with FIFRA section 6(e). Your release for shipment of the product constitutes acceptance of these conditions. If you have questions about this letter, please contact Jennifer Gaines at (703) 305-5967 or via e-mail at gaines.jennifer@epa.gov.

Sincerely,

Reuben Baris
Acting Product Manager (07)
Insecticide-Rodenticide Branch
Registration Division (7505P)

TOMCAT[®] BAIT CHUNX

This Product May Only be Used Inside and Within 100 Feet of Man-made Structures

KILLS NORWAY RATS, ROOF RATS AND HOUSE MICE

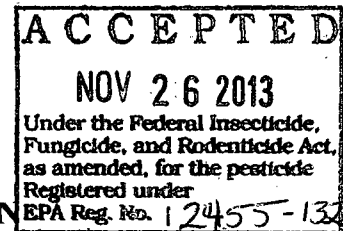
KILLS ANTICOAGULANT RESISTANT NORWAY RATS, ROOF RATS AND HOUSE MICE

Norway rats, Roof rats and House Mice usually consume a lethal dose in a single night's feeding, but it may take two or more days from the time of bait consumption for these rodents to die. Rodents cease feeding after consuming a toxic dose. TOMCAT BAIT CHUNX kills anticoagulant resistant Norway rats, roof rats and house mice.

ACTIVE INGREDIENT:

Bromethalin (CAS #63333-35-7):	0.01%
OTHER INGREDIENTS*:	99.99%
TOTAL		100.00%

*Contains Denatonium Benzoate



KEEP OUT OF REACH OF CHILDREN

CAUTION

FIRST AID

HAVE LABEL WITH YOU WHEN OBTAINING TREATMENT ADVICE

IF SWALLOWED:

- Call a poison control center, doctor, or 1-877-854-2494 immediately for treatment advice.
- Have person sip a glass of water if able to swallow.
- Do not induce vomiting unless told to do so by the poison control center or doctor.

IF ON SKIN:

- Wash with plenty of soap and water.

TREATMENT FOR PET POISONING

If animal eats bait, call veterinarian or 1-800-854-2494 at once.

NOTE TO PHYSICIAN OR VETERINARIAN

Contains the nerve poison Bromethalin. This is not an anticoagulant type rodenticide. For humans or animals ingesting bait and/or showing poisoning signs (such as muscle tremors, loss of hind limb use, or seizures for animals), limit absorption by either emesis or gastric lavage. Sublethal symptoms, if present, would be the result of cerebral edema and should be treated accordingly through administration of an osmotic diuretic and corticosteroid.

See Back/Side Panel for First Aid and additional precautionary statements.

3/6

NET WEIGHT: 4-50 lb.

Manufactured by:

Batch Code:



Bell Laboratories, Inc.
3699 Kinsman Blvd.
Madison, WI 53704

EPA REG. NO. 12455-132

EPA EST. NO. 12455-WI-1

DIRECTIONS FOR USE

It is a violation of Federal law to use this product in a manner inconsistent with its labeling.

READ THIS LABEL: Read this entire label and follow all use directions and use precautions. Use only for the sites, pests, and application methods described on this label.

IMPORTANT: Do not expose children, pets, or nontarget animals to rodenticides. To help prevent exposure:

1. Store unused product out of reach of children and pets.
2. Apply bait in locations out of reach of children, pets, domestic animals and nontarget wildlife, or in tamper-resistant bait stations. These stations must be resistant to destruction by dogs and by children under six years of age, and must be used in a manner that prevents such children from reaching into bait compartments and obtaining bait. If bait can be shaken from bait stations when they are lifted, units must be secured or otherwise immobilized. Stronger bait stations are needed in areas open to hoofed livestock, raccoons, bears or other potentially destructive animals, or in areas prone to vandalism.
3. Dispose of product container and unused, spoiled or unconsumed bait as specified on this label.

NOTE: Bait stations are mandatory for outdoor, above ground use. Tamper-resistant bait stations must be used if children, pets, non-target mammals or birds may access the bait.

USE RESTRICTIONS: This product can only be used to control Norway rats, roof rats and house mice in and within 100 feet of man-made structures constructed in a manner so as to be vulnerable to commensal rodent invasions and/or to harboring or attracting rodent infestations. Examples of such structures include homes and other permanent or temporary residences, food processing facilities, industrial and commercial buildings, trash receptacles, agricultural and public buildings, transport vehicles (ships, trains, aircraft), docks and port of terminal buildings and related structures around and associated with these sites. Fence and perimeter baiting, beyond 100 feet from a structure as defined above, is prohibited. This product must not be applied directly to food or feed crops.

Burrow baiting with Tomcat Bait Chunx is prohibited.

Do not place near or inside ventilation duct openings. Do not contaminate water, food, feedstuffs, food or feed handling equipment, or milk or meat handling equipment or surfaces that come into direct contact with food. When used in USDA inspected facilities, this product must be applied in tamper-resistant bait stations. Do not broadcast bait.

Do not sell this product in individual containers holding less than 4 pounds of bait

SELECTION OF TREATMENT AREAS: Determine areas where rats or mice will most likely find and consume the bait. Generally, these areas are along walls, by gnawed openings, in corners and concealed places, between floors and walls, or in locations where rodents or their signs have been seen. Protect bait from rain and snow. Remove as much alternative food as possible.

APPLICATION DIRECTIONS:

Rats: Place 1 to 6 blocks per placement (usually at intervals of 15 to 30 feet) in infested areas. Adjust the amount of bait applied to the level of rat feeding expected at each bait placement.

For use in sewers, thread wire through block and securely attach to a stationary structure such as the bottom step of a manhole ladder or a sewer grate. Allow just enough wire for the block to rest on manhole benching. If benching is not present, suspend block a few inches above the high water mark or secure block on a board supported by opposing steps of the ladder. Securing block in this manner will prevent removal by rats or water. Use at least 8 blocks per manhole. Maintain an uninterrupted supply of fresh bait for at least 10 days or until signs of rat activity cease.

Mice: Use 1 bait block per placement. Space placements at intervals of 8 to 12 feet in infested areas. Larger placements, up to 2 blocks, may be needed at points of extremely high mouse activity.

Baiting Strategy: Highest bait consumption is expected to occur on the first day or two after treatment begins. After several days, inspect the placement and replenish bait at sites where there is evidence of heavy feeding or where there is continued evidence of rodent activity.

Normally, the volume of bait consumed will be significantly less with bromethalin baits than with anticoagulant baits. Although one night's feeding will usually provide a lethal dose, maintain bait for at least one week to provide all rodents a chance to feed on the bait. Continue baiting until all signs of feeding have ceased.

FOLLOW-UP: Replace contaminated or spoiled bait immediately. Wearing waterproof gloves, collect and dispose of all dead, exposed animals and leftover bait. To prevent reinfestation, limit sources of rodent food, water, and harborage as much as possible. If reinfestation does occur, repeat treatment. Where a continuous source of infestation is present, establish permanent bait stations and replenish as needed.

PRECAUTIONARY STATEMENTS

Hazards to Humans and Domestic Animals

CAUTION: Harmful if swallowed or absorbed through the skin. Keep away from children, domestic animals and pets. Do not get in eyes, on skin or on clothing. All handlers (including applicators) must wear a long sleeve-shirt, long pants, shoes plus socks, and gloves. Any person who retrieves carcasses or unused bait following application of this product must wear waterproof gloves.

User Safety Requirements

Follow manufacturer's instructions for cleaning/maintaining PPE. If no such instructions for washables, use detergent and hot water. Keep and wash PPE separately from other laundry. Remove PPE immediately after handling this product. Wash the outside of gloves before removing. As soon as possible, wash hands thoroughly after applying bait and before eating, drinking, chewing gum, using tobacco or using the toilet and change into clean clothing.

Environmental Hazards

This product is extremely toxic to mammals and birds. Dogs and other predatory and scavenging mammals and birds might be poisoned if they feed upon animals that have eaten this bait. Do not apply directly to water, or to areas where surface water is present or to intertidal areas below the mean high water mark. Runoff also may be hazardous to aquatic organisms in water adjacent to treated areas. Do not contaminate water when disposing of equipment wash water or rinsate.

STORAGE AND DISPOSAL

Do not contaminate water, food or feed by storage or disposal.

Pesticide Storage: Store only in original container in a cool, dry place inaccessible to children and pets. Keep containers closed and away from other chemicals.

Pesticide Disposal: Wastes resulting from the use of this product may be placed in trash or delivered to an approved waste disposal facility.

Container Handling: Nonrefillable container. Do not reuse or refill this container. **[Plastic:]** Offer for recycling or reconditioning; or puncture and dispose of in a sanitary landfill.

[Paper:] Dispose of empty container by placing in trash, at an approved disposal facility or by incineration.

WARRANTY: To the extent consistent with applicable law, seller makes no warranty, expressed or implied, concerning the use of this product other than indicated on the label. Buyer assumes all risk of use and/or handling of this material when such use and/or handling is contrary to label instructions.

OPTIONAL MARKETING STATEMENTS:

Contains Bromethalin

Kills Anticoagulant Resistant Norway Rats, Roof Rats and House Mice

Norway rats, Roof rats, and House Mice Cease Feeding After Consuming a Toxic Dose

For Use in and Around Homes and Buildings

For Use in and Around Agricultural Buildings

Palatable Formulation

All-Weather Bait Chunx

All-Weather Formula

Multi-edge Shape Gives Rodents Gnawing Edges

Can be Used Indoors or Out

Can be Used Alone or in Tomcat Bait Stations

For Use in Tomcat Bait Stations

Made in USA

Bait Chunx

Rat and House Mouse Killer

For Use In & Around Agricultural Buildings & Homes

Each block kills up to 12 mice* * based on no-choice laboratory testing

OPTIONAL GRAPHICS:

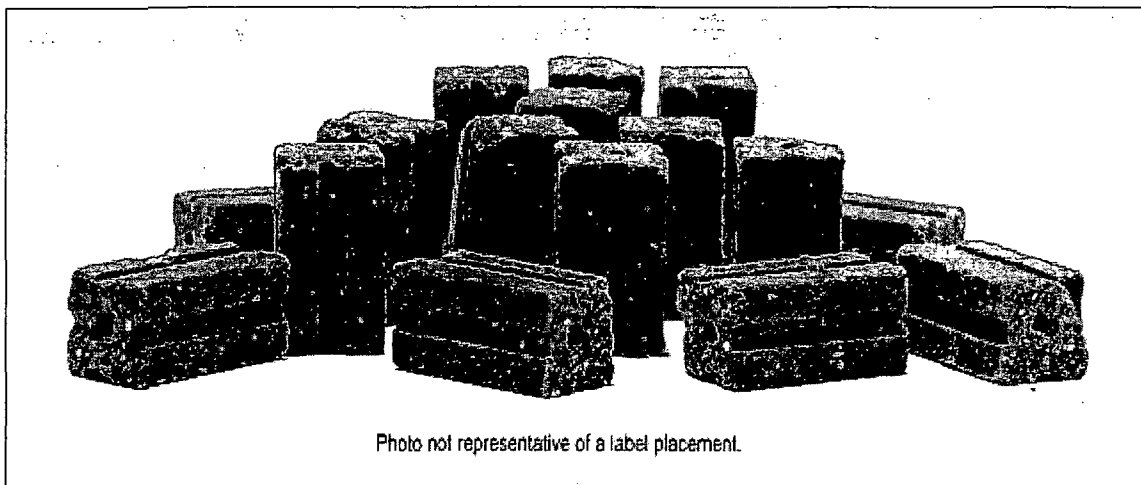
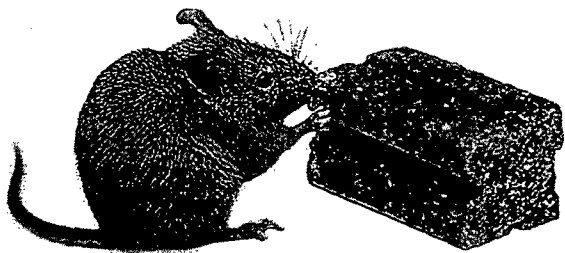


Photo not representative of a label placement.

Version 112113