

12455-131

04-19-2012

1/6

UNITED STATES ENVIRONMENTAL PROTECTION AGENCY
WASHINGTON, D.C. 20460



OFFICE OF CHEMICAL SAFETY
AND POLLUTION PREVENTION

Mr. John Lublinkhof
Bell Laboratories, Inc.
3699 Kinsman Blvd.
Madison, WI 53704

APR 19 2012

Dear Mr. Lublinkhof:

Subject: Label Revisions to Reflect New Label Perimeter Restriction of 100 Feet
and Burrow Baiting Language
ERAZE AG
EPA Registration No. 12455-131

The labeling referred to above, submitted in connection with registration under the Federal Insecticide, Fungicide, and Rodenticide Act, as amended, is acceptable. A stamped copy is enclosed for your records. Please submit one (1) final printed copy for the above mentioned label before releasing the product for shipment.

Note: Should you wish to add a reference to the company's website on your label, please be aware that the website becomes labeling under the Federal Insecticide Fungicide and Rodenticide Act and is subject to review by the Agency. If the website is false or misleading, the product would be misbranded and unlawful to sell or distribute under FIFRA section 12(a)(1)(E). 40 CFR 156.10(a)(5) list examples of statements EPA may consider false or misleading. In addition, **regardless of whether a website is referenced on your product's label**, claims made on the website may not substantially differ from those claims approved through the registration process. Therefore should the Agency find or if it is brought to our attention that a website contains false or misleading statements or claims substantially differing from the EPA approved registration, the website will be referred to the EPA's Office of Enforcement and Compliance Assurance.

If these conditions are not complied with, the registration will be subject to cancellation in accordance with FIFRA section 6(e). Your release for shipment of the product constitutes acceptance of these conditions. If you have questions about this letter, please contact Jennifer Gaines at (703) 305-5967 or via e-mail at gaines.jennifer@epa.gov.

Sincerely yours,

A handwritten signature in cursive script that reads "Jennifer Gaines for".

John Hebert
Product Manager (07)
Insecticide-Rodenticide Branch
Registration Division (7505P)

ERAZE AG

**This product may only be used inside and within 100 feet of man-made structures
and for all burrow baiting**

INTENDED FOR COMMERCIAL USE

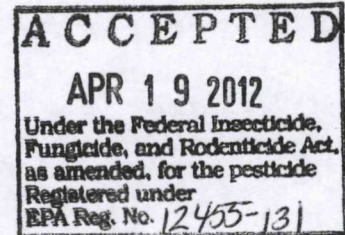
KILLS RATS AND MICE

ACTIVE INGREDIENT:

Zinc Phosphide (CAS #1314-84-7) 2%

OTHER INGREDIENTS:..... 98%

TOTAL 100%



KEEP OUT OF REACH OF CHILDREN

CAUTION

FIRST AID

Have the product container or label with you when calling a poison control center or doctor or going for treatment. You may also contact 1-877-854-2494 for emergency medical treatment information. If you experience signs and symptoms such as nausea, abdominal pain, tightness in chest, or weakness, see a physician immediately. For information on pesticide products (including health concerns, medical emergencies, or pesticide incidents), call the National Pesticide Information Center at 1-800-858-7378.

If swallowed	<ul style="list-style-type: none"> • Call a poison control center or doctor immediately for treatment advice or transport the patient to the nearest hospital. • Do not drink water. • Do not administer anything by mouth or induce vomiting unless told to do so by the poison control center or doctor.
If on skin or clothing	<ul style="list-style-type: none"> • Take off contaminated clothing. • Rinse skin immediately with plenty of water for 15 – 20 minutes. • Call a poison control center or doctor for treatment advice.
If inhaled	<ul style="list-style-type: none"> • Move person to fresh air. • If person is not breathing, call 911 or ambulance, then give artificial respiration, preferably mouth-to-mouth, if possible. • Call a poison control center or doctor for further treatment advice.

TREATMENT FOR PET POISONING

If animal eats bait, call veterinarian at once.

NOTE TO PHYSICIAN OR VETERINARIAN

Contains the phosphine-producing active, Zinc Phosphide. Probable mucosal damage may contraindicate the use of gastric lavage. For animals ingesting bait and/or showing poisoning signs, induce vomiting by using hydrogen peroxide. Sodium bicarbonate can be given orally to neutralize the stomach acidity. The stomach and intestinal tract can be evacuated, oxygen administered and cardiac and circulatory stimulants given.

See Back/Side Panel for First Aid and additional precautionary statements.

NET WEIGHT: 4 – 25 lbs. (1.8 – 11.3 kg)

Manufactured by:



Bell Laboratories, Inc.
3699 Kinsman Blvd.
Madison, WI 53704 U.S.A.

EPA REG. NO. 12455-131 EPA EST. NO. 12455-WI-1

DIRECTIONS FOR USE

It is a violation of Federal law to use this product in a manner inconsistent with its labeling.

READ THIS LABEL: Read this entire label and follow all use directions, restrictions and precautions.

USE RESTRICTIONS:

- Do not apply by any method, to any pest, or to any site not specified on this label.
- Only apply bait in locations out of reach of children, pets, domestic animals and nontarget wildlife. Tamper-resistant bait stations must be used if children, pets, non-target mammals, or birds may access the bait. These stations must be resistant to destruction by dogs and by children under six years of age, and must be used in a manner that prevents such children from reaching into bait compartments and obtaining bait. If bait can be shaken from bait stations when they are lifted, units must be secured or otherwise immobilized. Even stronger bait stations are needed in areas open to hooved livestock, raccoons, bears, other potentially destructive animals, or in areas prone to vandalism.
- Bait stations are mandatory for outdoor, above-ground use.
- Do not apply this product in a way that will contact workers or other persons, either directly or through drift. Only protected handlers may be in the area during application. Keep all persons out of the treated area during application.

This product can only be used to control Norway rats, roof rats and house mice in and within 100 feet of man-made structures constructed in a manner so as to be vulnerable to commensal rodent invasions and/or to harboring or attracting rodent infestations. Examples of such structures include homes and other permanent or temporary residences, food processing facilities, industrial and commercial buildings, trash receptacles, agricultural and public buildings, transport vehicles (ships, trains, aircraft), docks and port of terminal buildings and related structures around and associated with these sites. Fence and perimeter baiting, beyond 100 feet from a structure as defined above, is prohibited. This product must not be applied directly to food or feed crops.

This product may be applied to active rodent burrows to control Norway rats, and roof rats within or beyond 100 feet of buildings and man-made structures, provided that infestations of these rodents have been confirmed. Bait must be placed no less than 6 inches into active Norway/roof rat burrows. Do not broadcast bait. Because Norway/roof rat infestations may occur in areas farther than 100 feet from buildings and man-made structures when the rodents have ample supplies of food and cover, efforts should be made to remove food trash, garbage, clutter and debris.

4
6

Do not place near or inside ventilation duct openings. Do not contaminate water, food, feedstuffs, food or feed handling equipment, or milk or meat handling equipment or surfaces that come into direct contact with food. When used in USDA inspected facilities, this product must be applied in tamper-resistant bait stations.

Do not sell this product in individual containers holding less than 4 pounds of bait.

APPLICATION DIRECTIONS:

SELECTION OF TREATMENT AREAS: After removing as much food, water and harborage as possible, determine dry, acid-free areas where rats and mice will most likely find and consume the bait. Generally these areas are along walls, by gnawed openings, in or beside burrows, in corners and concealed places, between floors and walls, or in locations where rats and mice or their signs have been observed.

APPLICATION DIRECTIONS FOR RATS: Apply 1 to 2 teaspoon amounts of bait per placement. For outdoor use, place bait in active rat burrows or tamper-resistant bait stations. Maintain an uninterrupted supply of fresh bait until all signs of feeding have stopped. Do not treat the same area at less than 30 day intervals.

APPLICATION DIRECTIONS FOR MICE: Apply 1 teaspoon of bait per placement at 8 to 12 foot intervals. For outdoor use, place bait in tamper-resistant bait stations. Maintain an uninterrupted supply of fresh bait until all signs of feeding have stopped. Do not treat the same area at less than 30 day intervals. Collect and dispose of all dead animals.

FOLLOW-UP: Wearing waterproof gloves, collect and dispose of dead, exposed animals. Dispose of leftover bait in accordance with disposal instructions. Use detergent and hot water to wash spoons used for application into burrows. Do not use spoon for mixing, holding or transferring food or feed. To discourage reinfestation, limit sources of rodent food, water, and harborage as much as possible.

PRECAUTIONARY STATEMENTS HAZARDS TO HUMANS AND DOMESTIC ANIMALS

Harmful if swallowed, absorbed through the skin, or inhaled. Do not breathe dust. Avoid contact with eyes, skin, or clothing. Any person who retrieves carcasses or unused bait following application of this product must wear gloves.

Personal Protective Equipment (PPE)

All handlers, including loaders and applicators must wear:

- Long-sleeved shirt and long pants
- Shoes plus socks
- Water-proof gloves

User Safety Requirements

Follow manufacturer's instructions for cleaning/maintaining PPE. If no such instructions for washables, use detergent and hot water. Keep and wash PPE separately from other laundry. Remove PPE immediately after handling this product.

User Safety Recommendations

- Wash hands thoroughly with soap and water before eating, drinking, chewing gum, using tobacco or using the toilet.
- Remove clothing/PPE immediately if pesticide gets inside. Then wash thoroughly and put on clean clothing.
- Remove PPE immediately after handling this product. Wash the outside of gloves before removing. As soon as possible, wash thoroughly and change into clean clothing.

ENVIRONMENTAL HAZARDS

This product is extremely toxic to birds, fish and other wildlife. Dogs, cats and other animals might be poisoned if they feed upon animals that have eaten this bait. Do not contaminate water when disposing of equipment wash water or rinsate.

STORAGE AND DISPOSAL

Do not contaminate water, food or feed by storage or disposal.

PESTICIDE STORAGE: Store only in original container in a cool, dry place inaccessible to children and pets. Keep containers closed and away from other chemicals.

PESTICIDE DISPOSAL: Wastes resulting from the use of this product may be placed in trash or delivered to an approved waste disposal facility.

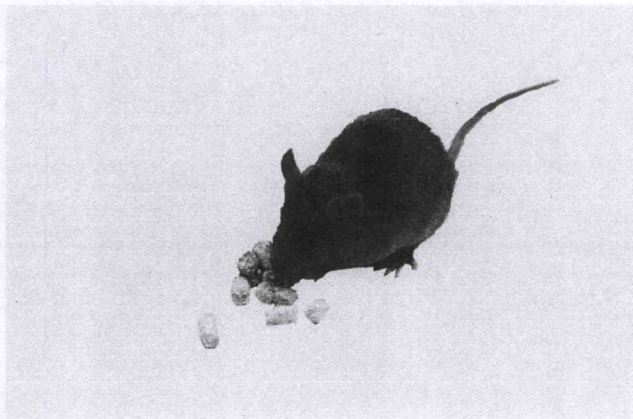
CONTAINER HANDLING: Nonrefillable container. Do not reuse or refill this container. Offer for recycling, if available. Dispose of empty container by placing in trash, at an approved waste disposal facility or by incineration or, if allowed by state and local authorities, by burning. If burned stay out of smoke. Call your Local Waste Agency for any questions on proper disposal.

DISCLAIMER: To the extent permitted by applicable law, the seller makes no warranty, expressed or implied, concerning the use of this product other than indicated on the label. To the extent permitted by applicable law, the buyer assumes all risks of use and/or handling of this material when such use and/or handling is contrary to label instructions.

OPTIONAL MARKETING STATEMENTS:

- Norway Rat, Roof Rat, and House Mouse Pellets
- Norway Rat, Roof Rat, and House Mouse Bait
- Norway Rat, Roof Rat, and House Mouse Killers
- Kills Norway and Roof Rats and House Mice
- To help with indoor and outdoor Norway and Roof Rats and House Mice control
- Made in USA
- With Zinc Phosphide
- Palatable Bait
- Pellets
- Pelleted Bait
- Ready To Use
- Bulk Pellets

OPTIONAL GRAPHIC WITHOUT TEXT:



041212