



UNITED STATES ENVIRONMENTAL PROTECTION AGENCY
WASHINGTON, DC 20460

OFFICE OF CHEMICAL SAFETY
AND POLLUTION PREVENTION

July 31, 2019

Jennifer J. Klika
Regulatory Affairs Manager
Bell Laboratories, Inc.
3699 Kinsman Blvd.
Madison, WI 53704

Subject: Label Amendment – To add optional graphics for child resistant stations
Product Name: Tomcat Mouse Killer II
EPA Registration Number: 12455-123
Application Date: 07/15/2019
Decision Number: 553535

Dear Ms. Klika:

The amended label referred to above, submitted in connection with registration under the Federal Insecticide, Fungicide and Rodenticide Act, as amended, is acceptable. This approval does not affect any conditions that were previously imposed on this registration. You continue to be subject to existing conditions on your registration and any deadlines connected with them.

A stamped copy of your labeling is enclosed for your records. This labeling supersedes all previously accepted labeling. You must submit one copy of the final printed labeling before you release the product for shipment with the new labeling. In accordance with 40 CFR 152.130(c), you may distribute or sell this product under the previously approved labeling for 18 months from the date of this letter. "To distribute or sell" is defined under FIFRA section 2(gg) and its implementing regulation at 40 CFR 152.3.

Should you wish to add/retain a reference to the company's website on your label, then please be aware that the website becomes labeling under the Federal Insecticide Fungicide and Rodenticide Act and is subject to review by the Agency. If the website is false or misleading, the product would be misbranded and unlawful to sell or distribute under FIFRA section 12(a)(1)(E). 40 CFR 156.10(a)(5) list examples of statements EPA may consider false or misleading. In addition, regardless of whether a website is referenced on your product's label, claims made on the website may not substantially differ from those claims approved through the registration process. Therefore, should the Agency find or if it is brought to our attention that a website contains false or misleading statements or claims substantially differing from the EPA approved registration, the website will be referred to the EPA's Office of Enforcement and Compliance.

Your release for shipment of the product constitutes acceptance of these conditions. If these conditions are not complied with, the registration will be subject to cancellation in accordance with FIFRA section 6. If you have any questions, please contact Paul Di Salvo by phone at 703-347-0322, or via email at disalvo.paul@epa.gov.

Sincerely,

A handwritten signature in black ink that reads "Paul P. Salvo, Sr." The signature is written in a cursive style with a small "Sr" at the end.

Venus Eagle, Product Manager 01
Invertebrate and Vertebrate Branch 3
Registration Division (7505P)
Office of Pesticide Programs

TOMCAT® MOUSE KILLER II

[Alternate Brand Name: T3 Mouse]

**This Bait Station is Resistant to Weather and to Tampering by Children.
For Use Indoors Only.**

ACTIVE INGREDIENT:

Bromethalin (CAS # 63333-35-7)	0.01%
OTHER INGREDIENTS†:	<u>99.99%</u>
TOTAL:	100.00%

†Contains Denatonium Benzoate

EPA REG. NO. 12455-123

EPA EST. NO. 12455-WI-1^k
EPA EST. NO. 12455-WI-2^p
EPA EST. NO. 12455-WI-3^w
[superscript is first letter of lot number]

**KEEP OUT OF REACH OF CHILDREN
CAUTION**

NET WEIGHT:

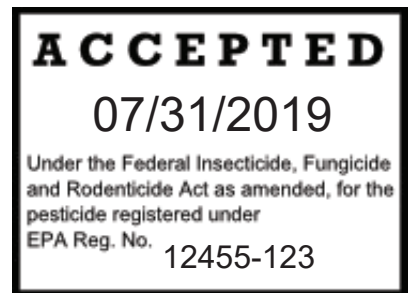
1 oz. x 1 Bait Station (28 g) to 1 oz. x 16 Bait Stations (454 g)

Manufactured By:



Bell Laboratories, Inc.
3699 Kinsman Blvd.
Madison, WI 53704

Batch Code:



See back [bottom] [and] [side] panel[s] for
First Aid, additional Precautionary Statements, and Directions for Use.

Bold, italicized text is information for the reader and is not part of the label.

[Bracketed information is optional text.]

Text separated by / denotes and/or options.

FIRST AID	
HAVE LABEL WHEN OBTAINING TREATMENT ADVICE	
If Swallowed:	<ul style="list-style-type: none">• Call a poison control center, doctor, or 1-877-854-2494 immediately for treatment advice.• Have person sip a glass of water if able to swallow.• Do not give anything by mouth to an unconscious person.• Do not induce vomiting unless told to do so by the poison control center or doctor.
If on Skin:	<ul style="list-style-type: none">• Wash with plenty of soap and water.
TREATMENT FOR PET POISONING	
If an animal eats this bait, call a veterinarian, or 1-877-854-2494 at once.	
NOTE TO PHYSICIAN OR VETERINARIAN	
Contains the nerve poison bromethalin. This product is not an anticoagulant type rodenticide. For humans or animals ingesting bait and/or showing poisoning signs (such as muscle tremors, loss of hind limb use, or seizures for animals), limit absorption by either emesis or gastric lavage. Sublethal symptoms, if present, would be the result of cerebral edema and should be treated accordingly through administration of an osmotic diuretic and corticosteroid.	

PRECAUTIONARY STATEMENTS

Hazards to Humans and Domestic Animals

CAUTION: Harmful if swallowed. Keep away from children, domestic animals and pets. Any person who retrieves carcasses or unused bait following application of this product must wear waterproof gloves.

USER SAFETY REQUIREMENTS: As soon as possible, wash hands thoroughly after applying bait and before eating, drinking, chewing gum, using tobacco, or using the toilet.

ENVIRONMENTAL HAZARDS

This product is extremely toxic to fish, birds and other wildlife. Dogs, cats and other predatory and scavenging mammals and birds might be poisoned if they feed upon animals that have eaten this bait. Do not apply directly to water.

DIRECTIONS FOR USE

It is a violation of Federal law to use this product in a manner inconsistent with its labeling.

READ THIS LABEL: Read this entire label and follow all use directions and use precautions. Use only for the sites, pests and application methods described on this label.

USE RESTRICTIONS:

This bait station may be used in indoor areas accessible to children, consistent with all use restrictions and other requirements indicated on this label. **DO NOT USE TOMCAT® MOUSE KILLER II [THIS PRODUCT] OUTDOORS OR IN AREAS ACCESSIBLE TO PETS.**

For control only of house mice. Tomcat® Mouse Killer II [This Product] must be used in buildings consistent with all use restrictions and other requirements indicated on this label. Do not place this bait station in any area where there is a possibility of contaminating food or surfaces that come into direct contact with food.

Bold, italicized text is information for the reader and is not part of the label.

[Bracketed information is optional text.]

Text separated by / denotes and/or options.

SELECTION OF TREATMENT AREAS: Determine areas where house mice will most likely find and consume the bait. Generally, these areas are along walls, by gnawed openings, in corners and concealed places.

APPLICATION DIRECTIONS:

Place the bait station [horizontally or vertically] at point of highest activity beside burrows, along a wall, or in corners where signs of house mice have been seen. If additional units are to be used, place bait station at 8- to 12-foot intervals. [Stations can be used horizontally or vertically.] Maintain an uninterrupted supply of fresh bait for at least 15 days or until there no longer are fresh signs of house mouse activity in infested areas. To monitor for replacement, view bait via lid. While wearing waterproof gloves, remove bait station if bait has been consumed or contaminated. Replace bait station with a new one if house mouse activity continues at that location. [Note: Mice will eat a small amount of bait and leave the station. You likely will not find a dead mouse in the station.] / [Note: Mice will eat a small amount of bait and cease feeding after consuming a toxic dose. They then leave the station. You likely will not find a dead mouse in the station.] [Mice cease feeding after consuming a toxic dose, so there may not be large amounts of bait missing from the station. This does not mean that the product is not working.]

Follow-up: Wearing waterproof gloves, collect and properly dispose of any leftover bait or carcasses. To discourage reinfestation, eliminate food, water and harborage as much as possible. If reinfestation does occur, repeat treatment.

STORAGE AND DISPOSAL

Do not contaminate water, food or feed by storage or disposal.

Pesticide Storage: Store only in original container in a cool, dry place inaccessible to children and pets.

Pesticide Disposal and Container Handling: Nonrefillable Container. Do not reuse or refill container except as described in the Directions For Use.

If Empty: Place in trash or offer for recycling if available.

If Partly Filled: Call your local solid waste agency for disposal instructions. Never place unused product down any indoor or outdoor drain.

WARRANTY: To the extent consistent with applicable law, seller makes no warranty, expressed or implied, concerning the use of this product other than indicated on the label. Buyer assumes all risk of use and/or handling of this material when such use and/or handling is contrary to label instructions.

Bold, italicized text is information for the reader and is not part of the label.

[Bracketed information is optional text.]

Text separated by / denotes and/or options.

TOMCAT® MOUSE KILLER II

[Alternate Brand Name: T3 Mouse]

**This Bait Station is Resistant to Weather and to Tampering by Children.
For Use Indoors Only.**

ACTIVE INGREDIENT:

Bromethalin (CAS # 63333-35-7)	0.01%
OTHER INGREDIENTS†:	<u>99.99%</u>
TOTAL:	100.00%

†Contains Denatonium Benzoate

EPA REG. NO. 12455-123

EPA EST. NO. 12455-WI-1^k
EPA EST. NO. 12455-WI-2^p
EPA EST. NO. 12455-WI-3^w
[superscript is first letter of lot number]

KEEP OUT OF REACH OF CHILDREN CAUTION

DO NOT ALLOW CHILDREN OR PETS TO PLAY WITH THE BAIT STATION

NET CONTENTS: 1 oz. (28 g)
NET WEIGHT: 1 oz. (28 g)

If swallowed, call a poison control center, doctor, or 1-877-854-2494

See Outer Packing Label for
First Aid, additional Precautionary Statements, and Directions for Use.

Batch Code:

Model No. MD2

Bold, italicized text is information for the reader and is not part of the label.

[Bracketed information is optional text.]

Text separated by / denotes and/or options.

OPTIONAL MARKETING STATEMENTS:

House mice usually consume a lethal dose in a single night's feeding but it may take two or more days from time of consumption for them to die.

Bait Station	Made in USA
Bromethalin	No need to touch the bait when placing station
Can [May] be Used [Placed] Horizontally or [and][&] Vertically	Pre-Baited
Can [May] be Used [Placed] Indoors	Pre-Filled
Child resistant [bait] station	Pre-Filled [Pre-Baited], Ready to Use Bait station
Contains 1 oz. block bait	Ready to Use
Contains [With] Bromethalin	See-through lid
Contains one bait station	See-through lid for easy bait monitoring
prefilled with 1 oz. block bait	See-through lid for easy monitoring
Disposable	Station is child resistant
Disposable Bait Station	Use Indoors
Durable design of [bait] station is child resistant	X Disposable Bait Station each containing 1 block
Feeding Station	Kills up to 12 mice* <i>* based on no-choice laboratory testing</i>
For Indoor Use [Use Indoors]	Each block kills up to 12 mice* <i>* based on no-choice laboratory testing</i>
House Mice cease feeding after consuming a toxic dose	Each station contains enough bait to kill up to 12 mice* <i>* based on no-choice laboratory testing</i>
House Mouse Bait Station	
House Mouse Feeding Station	<i>Note to EPA: Depending on the number of blocks in a package, we are requesting to use the following statements.</i>
House Mouse Killer	Enough bait to kill up to 12 [24][48][96][192] mice* <i>* based on no-choice laboratory testing</i>
Indoor Use	
Kid Tamper-Resistant [Bait] Station	This package contains enough bait to kill up to 12 [24][48][96][192] mice* <i>*based on no-choice laboratory testing</i>
Kid Tested [Bait] Station	
Kills House Mice	

Bold, italicized text is information for the reader and is not part of the label.

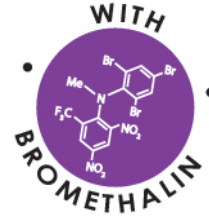
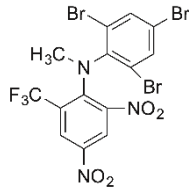
[Bracketed information is optional text.]

Text separated by / denotes and/or options.

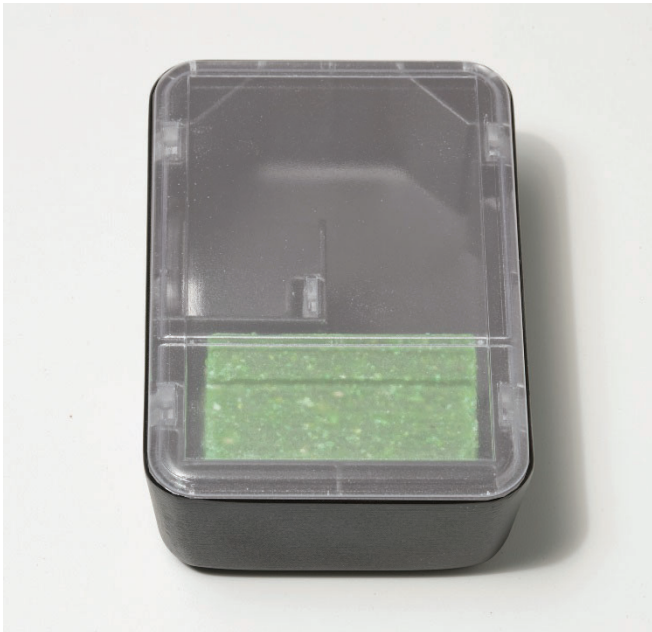
OPTIONAL GRAPHICS:



[Image of Bromethalin Structure]




Bold, italicized text is information for the reader and is not part of the label.
[Bracketed information is optional text.]
Text separated by / denotes and/or options.




Bold, italicized text is information for the reader and is not part of the label.
[Bracketed information is optional text.]
Text separated by / denotes and/or options.


CAN BE USED IN A VARIETY OF LOCATIONS




BEHIND APPLIANCES



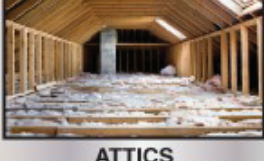
INSIDE CABINETS



GARAGES



BASEMENTS



ATTICS

Must adhere to the USE RESTRICTIONS in the DIRECTIONS FOR USE section of this label.

CAN BE USED HORIZONTALLY OR VERTICALLY



HORIZONTAL



VERTICAL

SEE-THROUGH LID FOR EASY BAIT MONITORING



DISPOSABLE



Bold, italicized text is information for the reader and is not part of the label.
[Bracketed information is optional text.]
Text separated by / denotes and/or options.