

12455-120

01/30/2013

1/11

UNITED STATES ENVIRONMENTAL PROTECTION AGENCY
WASHINGTON, D.C. 20460-0001



OFFICE OF CHEMICAL SAFETY
AND POLLUTION PREVENTION

JAN 30 2013

John Lublinkhof
Bell Laboratories, Inc.
3699 Kinsman Blvd.
Madison, WI 53704

Subject: Amendment to add marketing claims to the label
EPA Registration No.: 12455-120
Primary Brand Name: Tomcat Mouse Killer I
Submission Date: August 17, 2012
Decision No.: 474507

Dear Mr. Lublinkhof:

The label referred to above, submitted under FIFRA, as amended, is **acceptable**. Please submit one final printed copy for the above mentioned label before releasing the product for shipment. If you have any questions, please contact Gene Benbow at (703) 347-0235 or via email at benbow.gene@epa.gov.

Sincerely,

A handwritten signature in black ink, appearing to read "John Hebert", written over a large, stylized circular flourish.

John Hebert
Product Manager 07
Insecticide-Rodenticide Branch
Registration Division (7505P)

station or stored block bait in any area where there is a possibility of contaminating food or surfaces that come into direct contact with food. Store bait block refills out of reach of children and pets.

SELECTION OF TREATMENT AREAS: Determine areas where house mice will most likely find and consume the bait. Generally, these areas are along walls, by gnawed openings, in corners and concealed places.

APPLICATION DIRECTIONS:

While wearing gloves, place one block of bait in the bait station. See additional GRAPHICS AND TEXT. Place the bait station at highest point of activity along a wall or in corner where mice or their signs have been seen. If additional units are to be used, place bait stations at 8 to 12 foot intervals. While wearing gloves, replace bait in bait station when bait is consumed or contaminated. Maintain an uninterrupted supply of fresh bait for at least 15 days or until signs of mouse activity cease in infested areas.

LOADING BAIT INTO STATION

1 REMOVE BAIT CARTRIDGE FROM BOTTOM OF STATION



With your left hand push tab up



While still holding tab, squeeze prongs of bait cartridge and pull away from station

2 LOAD BAIT



Place bait into cartridge



Push cartridge into station until it clicks into place

Follow-up: Wearing gloves, collect and properly dispose of any leftover bait or carcasses. To discourage reinfestation, eliminate food, water and harborage as much as possible. If reinfestation does occur, repeat treatment.

PRECAUTIONARY STATEMENTS

Hazards to Humans and Domestic Animals

CAUTION: Bait contents harmful if swallowed. Keep away from children, domestic animals and pets. Any person who retrieves carcasses or unused bait following application of this product must wear gloves.

USER SAFETY REQUIREMENTS: As soon as possible, wash hands thoroughly after applying bait and before eating, drinking, chewing gum, using tobacco, or using the toilet.

FIRST AID

HAVE LABEL WITH YOU WHEN OBTAINING TREATMENT ADVICE

IF SWALLOWED:

- Call a poison control center, doctor, or 1-877-854-2494. immediately for treatment advice.
- Have person sip a glass of water if able to swallow.
- Do not induce vomiting unless told to do so by the poison control center or doctor.

IF ON SKIN:

- Wash with plenty of soap and water.

TREATMENT FOR PET POISONING

If an animal eats this bait, call a veterinarian at once.

NOTE TO PHYSICIAN OR VETERINARIAN

Contains the nerve poison bromethalin. This product is not an anticoagulant type rodenticide. For humans or animals ingesting bait and/or showing poisoning signs (such as muscle tremors, loss of hind limb use, or seizures for animals), limit absorption by either emesis or gastric lavage. Sublethal symptoms, if present, would be the result of cerebral edema and should be treated accordingly through administration of an osmotic diuretic and corticosteroid.

ENVIRONMENTAL HAZARDS

This product is extremely toxic to fish, birds and other wildlife. Dogs, cats and other predatory and scavenging mammals and birds might be poisoned if they feed upon animals that have eaten this bait. Do not apply directly to water.

STORAGE AND DISPOSAL

Do not contaminate water, food or feed by storage or disposal.

Pesticide Storage: Store only in original container in a cool, dry place inaccessible to children and pets.

Pesticide Disposal and Container Handling: Nonrefillable Container. Do not reuse or refill container except as described in the Directions For Use.

If Empty: Place in trash or offer for recycling if available.

If Partly Filled: Call your local solid waste agency for disposal instructions. Never place unused product down any indoor or outdoor drain.

WARRANTY: To the extent consistent with applicable law, seller makes no warranty, expressed or implied, concerning the use of this product other than indicated on the label. Buyer assumes all risk of use and/or handling of this material when such use and/or handling is contrary to label instructions

6/11

BAIT STATION LABEL

TOMCAT[®] MOUSE KILLER I

This Bait Station is Resistant to Weather and to Tampering by Children and Dogs. For Use Indoors and Outdoors.

ACTIVE INGREDIENT:

Bromethalin (CAS #63333-35-7):	0.01 %
OTHER INGREDIENTS*.....	99.99%
	100.00%

*Contains Denatonium Benzoate

EPA REG. NO. 12455-120

EPA EST. NO. 12455-WI-1

Net Wt.: 1 oz. (28g) block bait

DO NOT ALLOW CHILDREN OR PETS TO PLAY WITH THE BAIT STATION

This bait station can only be refilled with the block bait sold with this station.

CAUTION : See outer packaging for **DIRECTIONS FOR USE, FIRST AID** and additional **PRECAUTIONARY STATEMENTS.**

If swallowed, call a poison control center, doctor, or 1-877-854-2494

Batch Code:
MR1

Model No.

OPTIONAL MARKETING STATEMENTS:

House mice usually consume a lethal dose in a single night's feeding but it may take two or more days from time of consumption for them to die.

- Kills house mice
- House mice cease feeding after consuming a toxic dose
- Refillable house mouse bait station
- Refillable bait station
- See thru lid
- See thru lid for easy monitoring
- With bromethalin
- House mouse killer
- Includes xx oz of refill bait (blocks)
- Contains xx – 1 oz blocks (bait)
- Feeding station
- House mouse feeding station

OPTIONAL MARKETING STATEMENTS (CONT.'D):

- Reusable/Refillable
- Portico allows entry from either side
- Made in USA
- x bait refills
- x one ounce refills
- Can be used indoors or (&) out
- Child resistant [bait] station
- Station is child resistant
- Station is child and dog resistant
- Dog resistant [bait] station
- Child and dog resistant [bait] station
- Child, dog and weather resistant [bait] station
- Weather resistant [bait] station
- Use indoors and out
- For use indoors and out
- Indoor and outdoor
- Durable design of [bait] station is child and dog resistant
- Kid tested [bait] station
- Dog tested [bait] station
- Kid and Dog Tested [Bait] Station
- Kid and Dog Resistant [Bait] Station
- Kid & Dog Tamper-Resistant [Bait] Station
- Clear lid
- Clear lid for easy bait monitoring
- See-thru lid for easy bait monitoring
- Kills up to 12 mice* * based on no-choice laboratory testing
- Each block kills up to 12 mice* * based on no-choice laboratory testing
- Each station contains enough bait to kill up to 12 mice* * based on no-choice laboratory testing

Note to EPA: Depending on the number of blocks in a package, we are requesting to use the following statements.

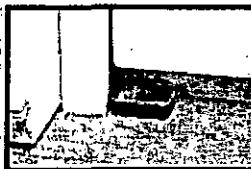
Enough bait to kill up to 12 (24) (48) (96) (192) mice* * based on no-choice laboratory testing

This package contains enough bait to kill up to 12 (24) (48) (96) (192) mice*
*based on no-choice laboratory testing

OPTIONAL GRAPHICS:



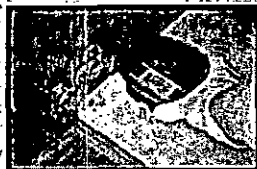
**CAN BE USED IN A
VARIETY OF
LOCATIONS**



BEHIND APPLIANCES



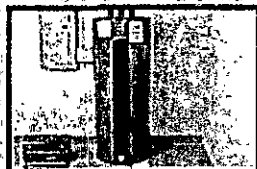
IN ATTICS



INSIDE CABINETS



GARAGES



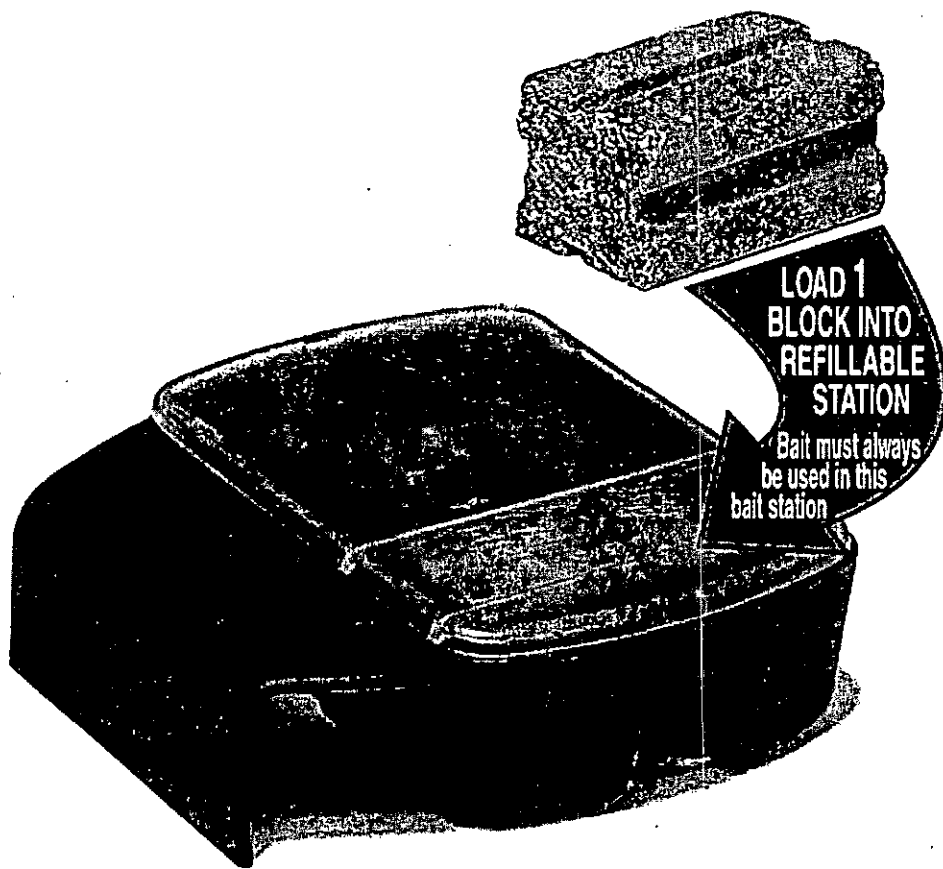
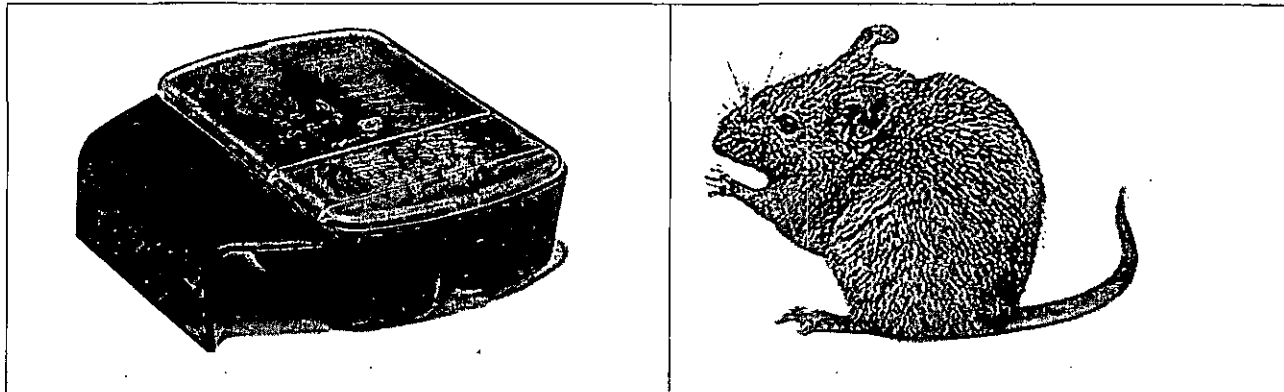
BASEMENTS



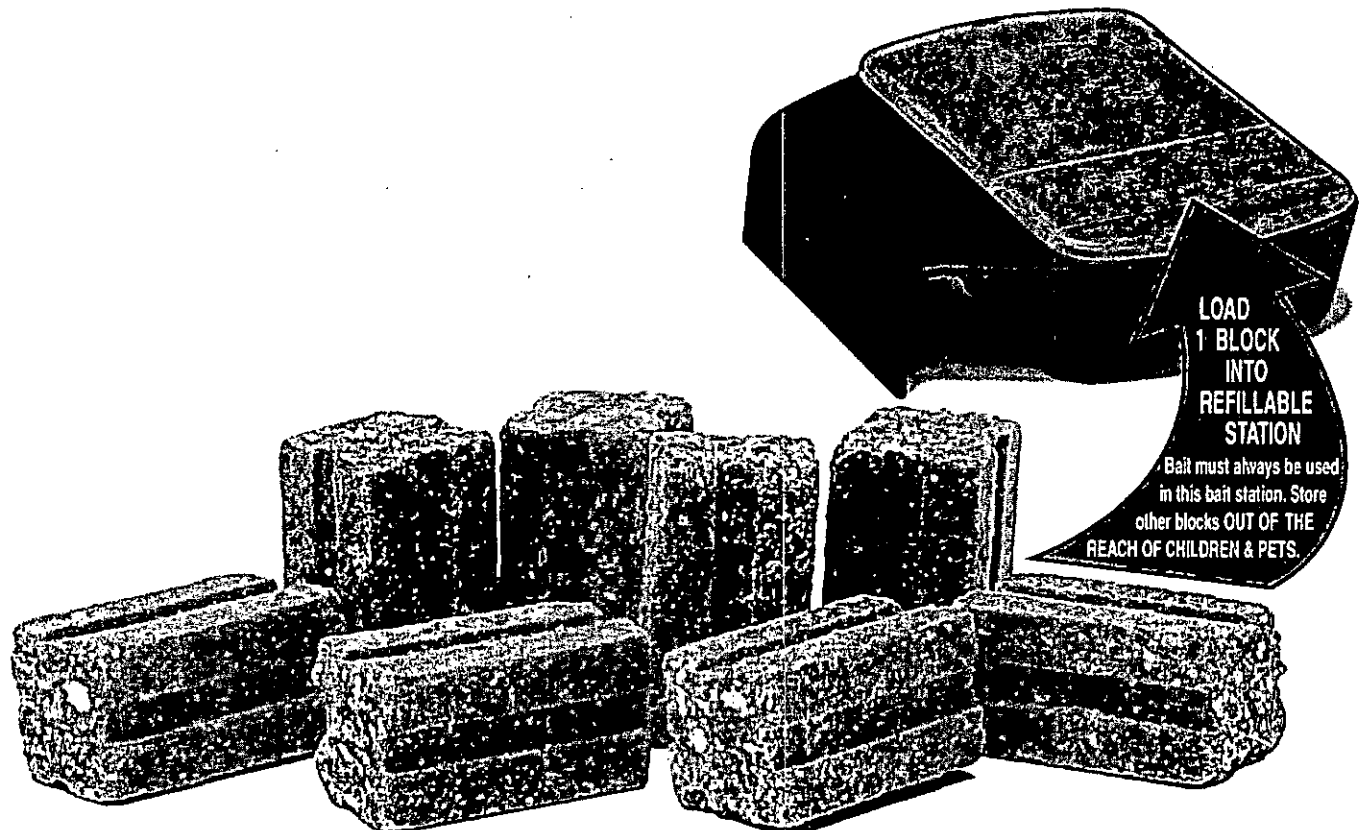
HOME EXTERIOR

Must adhere to the **USE
RESTRICTIONS** in the
DIRECTIONS FOR USE
section of this label.

OPTIONAL GRAPHICS (CONT'D.):



OPTIONAL GRAPHICS (CONT'D.):



**LOADING
BAIT INTO
STATION**

**1 REMOVE BAIT CARTRIDGE
FROM BOTTOM OF STATION**

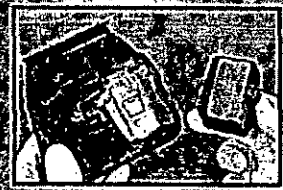


With your left hand push tab up.

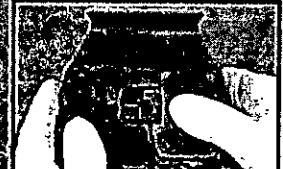


While still holding tab, squeeze prongs of bait cartridge and pull away from station.

2 LOAD BAIT

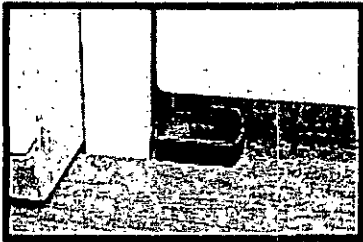


Place bait into cartridge.

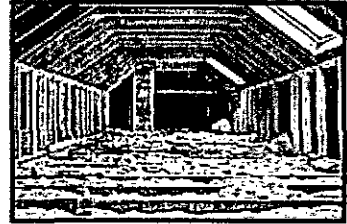


Push cartridge into station until it clicks into place.

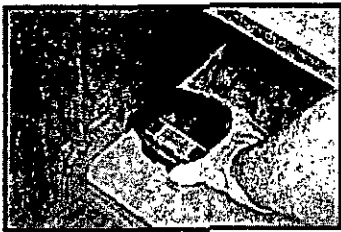
**CAN BE USED
IN A VARIETY
OF LOCATIONS**



BEHIND APPLIANCES



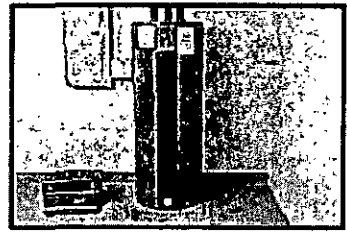
IN ATTICS



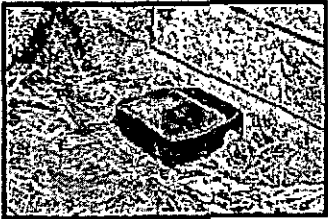
INSIDE CABINETS



GARAGES



BASEMENTS



HOME EXTERIOR

012113