

12455-120

7/10/2012

10 of 10

UNITED STATES ENVIRONMENTAL PROTECTION AGENCY
WASHINGTON D C 20460OFFICE OF CHEMICAL SAFETY
AND POLLUTION PREVENTIONMr John Lublinkhof
Bell Laboratories Inc
3699 Kinsman Blvd
Madison WI 53704

JUL 10 2012

Dear Mr Lublinkhof

Subject Formulation Change in Addition to Labeling Changes
Tomcat Mouse Killer I
EPA Registration No 12455 120
Decision No 461515

The confidential statement of formula dated February 15 2012 for the basic formulation has been reviewed and is acceptable All other previous basic confidential statements of formula are considered obsolete Per the product chemistry review dated June 1 2012 please submit storage stability and corrosion data for this new formulation Additionally the labeling referred to above submitted in connection with registration under the Federal Insecticide Fungicide and Rodenticide Act as amended is acceptable A stamped copy is enclosed for your records Please submit one (1) final printed copy for the above mentioned label before releasing the product for shipment

Note Should you wish to add a reference to the company's website on your label please be aware that the website becomes labeling under the Federal Insecticide Fungicide and Rodenticide Act and is subject to review by the Agency If the website is false or misleading the product would be misbranded and unlawful to sell or distribute under FIFRA section 12(a)(1)(E) 40 CFR 156.10(a)(5) list examples of statements EPA may consider false or misleading In addition **regardless of whether a website is referenced on your product label** claims made on the website may not substantially differ from those claims approved through the registration process Therefore should the Agency find or if it is brought to our attention that a website contains false or misleading statements or claims substantially differing from the EPA approved registration the website will be referred to the EPA's Office of Enforcement and Compliance Assurance

If these conditions are not complied with the registration will be subject to cancellation in accordance with FIFRA section 6(e) Your release for shipment of the product constitutes acceptance of these conditions If you have questions about this letter please contact Jennifer Games at (703) 305 5967 or via e mail at gaines.jennifer@epa.gov

Sincerely yours

A handwritten signature in black ink, appearing to read "John Hebert".

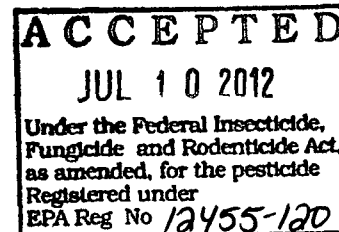
John Hebert
Product Manager (07)
Insecticide Rodenticide Branch
Registration Division (7505P)

OUTER PACKAGE COMPLETE LABEL**TOMCAT[®] MOUSE KILLER I**

| |
|---|
| This Bait Station is Resistant to Weather and to Tampering by Children and Dogs For Use Indoors and Outdoors |
|---|

| | |
|-------------------------------|---------|
| ACTIVE INGREDIENT | |
| Bromethalin (CAS #63333 35 7) | 0 01 % |
| OTHER INGREDIENTS* | 99 99% |
| | 100 00% |

*Contains Denatonium Benzoate

**KEEP OUT OF REACH OF CHILDREN
CAUTION**

See right/left/back panels for First Aid and additional precautionary statements

NET WT

| | | |
|--|----|---|
| 4 oz (112g) | to | 16 oz (454g) |
| 4 x 1 oz Block Bait & 1 Refillable Bait Station | | 16 x 1 oz Block Bait & 1 Refillable Bait Station |

Manufactured by



Bell Laboratories, Inc
3699 Kinsman Blvd
Madison WI 53704

Batch Code

EPA REG NO 12455 120

EPA EST NO 12455 WI 1

DIRECTIONS FOR USE

It is a violation of Federal law to use this product in a manner inconsistent with its labeling

READ THIS LABEL Read this entire label and follow all use directions and use precautions Use only for the sites pests and application methods described on this label**USE RESTRICTIONS**

This bait station may be used in areas accessible to children and pets consistent with all use restrictions and other requirements indicated on this label Do not apply further than 50 feet from home or building

For control only of house mice This bait station can only be refilled with the block bait sold with this station TOMCAT MOUSE KILLER I must be used in and around buildings consistent with all use restrictions and other requirements indicated on this label Do not place this bait station or stored block bait in any area where there is a possibility of contaminating food or surfaces that come into direct contact with food Store bait block refills out of reach of children and pets

SELECTION OF TREATMENT AREAS: Determine areas where house mice will most likely find and consume the bait. Generally, these areas are along walls, by gnawed openings, in corners and concealed places.

APPLICATION DIRECTIONS:

While wearing gloves, place one block of bait in the bait station. See additional GRAPHICS AND TEXT. Place the bait station at highest point of activity along a wall or in corner where mice or their signs have been seen. If additional units are to be used, place bait stations at 8 to 12 foot intervals. While wearing gloves, replace bait in bait station when bait is consumed or contaminated. Maintain an uninterrupted supply of fresh bait for at least 15 days or until signs of mouse activity cease in infested areas.

**LOADING
BAIT INTO
STATION**

**1 REMOVE BAIT CARTRIDGE
FROM BOTTOM OF STATION**



With your left hand push tab up.



While still holding tab, squeeze prongs of bait cartridge and pull away from station.

2 LOAD BAIT



Place bait into cartridge.



Push cartridge into station until it clicks into place.

Follow up Wearing gloves collect and properly dispose of any leftover bait or carcasses To discourage reinfestation eliminate food water and harborage as much as possible If reinfestation does occur repeat treatment

PRECAUTIONARY STATEMENTS

Hazards to Humans and Domestic Animals

CAUTION Bait contents harmful if swallowed Keep away from children domestic animals and pets Any person who retrieves carcasses or unused bait following application of this product must wear gloves

USER SAFETY REQUIREMENTS As soon as possible wash hands thoroughly after applying bait and before eating drinking chewing gum using tobacco or using the toilet

FIRST AID

HAVE LABEL WITH YOU WHEN OBTAINING TREATMENT ADVICE

IF SWALLOWED

Call a poison control center doctor or 1 877 854 2494 immediately for treatment advice
Have person sip a glass of water if able to swallow
Do not induce vomiting unless told to do so by the poison control center or doctor

IF ON SKIN

Wash with plenty of soap and water

TREATMENT FOR PET POISONING

If an animal eats this bait call a veterinarian at once

NOTE TO PHYSICIAN OR VETERINARIAN

Contains the nerve poison bromethalin This product is not an anticoagulant type rodenticide For humans or animals ingesting bait and/or showing poisoning signs (such as muscle tremors loss of hind limb use or seizures for animals) limit absorption by either emesis or gastric lavage Sublethal symptoms if present would be the result of cerebral edema and should be treated accordingly through administration of an osmotic diuretic and corticosteroid

ENVIRONMENTAL HAZARDS

This product is extremely toxic to fish birds and other wildlife Dogs cats and other predatory and scavenging mammals and birds might be poisoned if they feed upon animals that have eaten this bait Do not apply directly to water

STORAGE AND DISPOSAL

Do not contaminate water food or feed by storage or disposal

Pesticide Storage Store only in original container in a cool dry place inaccessible to children and pets

Pesticide Disposal and Container Handling Nonrefillable Container Do not reuse or refill container except as described in the Directions For Use

If Empty Place in trash or offer for recycling if available

If Partly Filled Call your local solid waste agency for disposal instructions Never place unused product down any indoor or outdoor drain

WARRANTY To the extent consistent with applicable law seller makes no warranty expressed or implied concerning the use of this product other than indicated on the label Buyer assumes all risk of use and/or handling of this material when such use and/or handling is contrary to label instructions

BAIT STATION LABEL

TOMCAT[®] MOUSE KILLER I

This Bait Station is Resistant to Weather and to Tampering by Children and Dogs For Use Indoors and Outdoors

| | |
|-------------------------------|---------------|
| ACTIVE INGREDIENT | |
| Bromethalin (CAS #63333 35 7) | 0 01 % |
| OTHER INGREDIENTS* | <u>99 99%</u> |
| | 100 00% |

*Contains Denatonium Benzoate

EPA REG NO 12455 120

EPA EST NO 12455 WI 1

Net Wt 1 oz (28g) block bait

DO NOT ALLOW CHILDREN OR PETS TO PLAY WITH THE BAIT STATION

This bait station can only be refilled with the block bait sold with this station

CAUTION See outer packaging for DIRECTIONS FOR USE FIRST AID and additional PRECAUTIONARY STATEMENTS

If swallowed call a poison control center doctor or 1 877 854 2494

Batch Code

Model No MR1

OPTIONAL MARKETING STATEMENTS

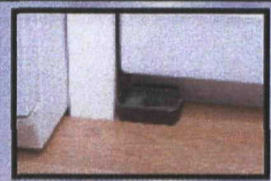
House mice usually consume a lethal dose in a single night s feeding but it may take two or more days from time of consumption for them to die

- Kills house mice
- House mice cease feeding after consuming a toxic dose
- Refillable house mouse bait station
- Refillable bait station
- See thru lid
- See thru lid for easy monitoring
- With bromethalin
- House mouse killer
- Includes xx oz of refill bait (blocks)
- Contains xx – 1 oz blocks (bait)
- Feeding station
- House mouse feeding station
- Reusable/Refillable
- Portico allows entry from either side
- Made in USA
- x bait refills
- x one ounce refills
- Can be used indoors or (&) out
- Child resistant [bait] station
- Station is child resistant
- Station is child and dog resistant
- Dog resistant [bait] station
- Child and dog resistant [bait] station
- Child dog and weather resistant [bait] station
- Weather resistant [bait] station
- Use indoors and out
- For use indoors and out
- Indoor and outdoor
- Durable design of [bait] station is child and dog resistant
- Kid tested [bait] station
- Dog tested [bait] station
- Kid and Dog Tested [Bait] Station
- Kid and Dog Resistant [Bait] Station
- Kid & Dog Tamper Resistant [Bait] Station
- Clear lid
- Clear lid for easy bait monitoring
- See thru lid for easy bait monitoring

OPTIONAL GRAPHICS:



**CAN BE USED IN A
VARIETY OF
LOCATIONS**



BEHIND APPLIANCES



IN ATTICS



INSIDE CABINETS



GARAGES



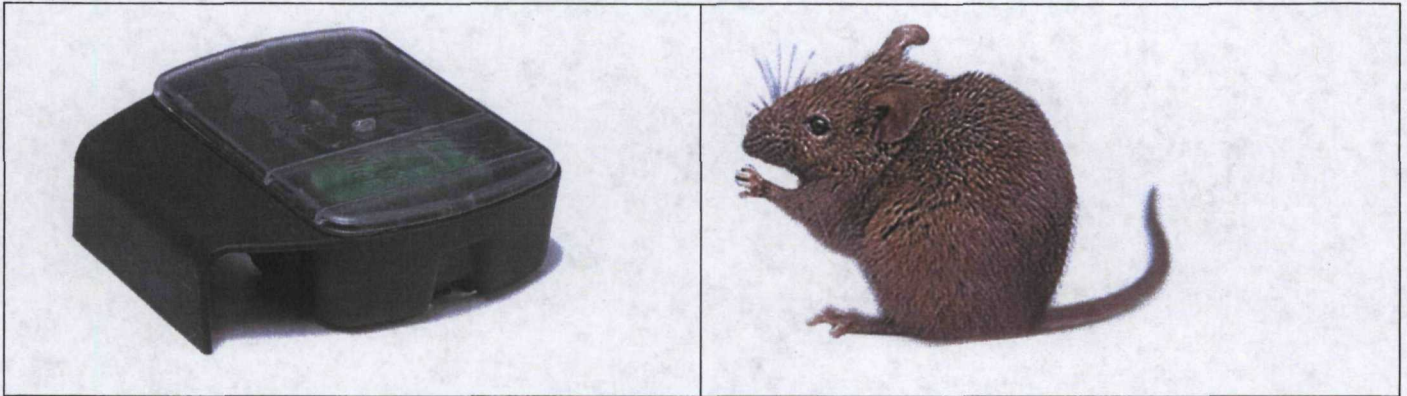
BASEMENTS



HOME EXTERIOR

Must adhere to the USE
RESTRICTIONS in the
DIRECTIONS FOR USE
section of this label.

OPTIONAL GRAPHICS (CONT'D.):



OPTIONAL GRAPHICS (CONT'D.):



**LOADING
BAIT INTO
STATION**

**1 REMOVE BAIT CARTRIDGE
FROM BOTTOM OF STATION**



With your left hand push tab up.



While still holding tab, squeeze prongs of bait cartridge and pull away from station.

2 LOAD BAIT



Place bait into cartridge.

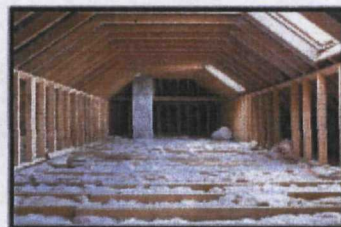


Push cartridge into station until it clicks into place.

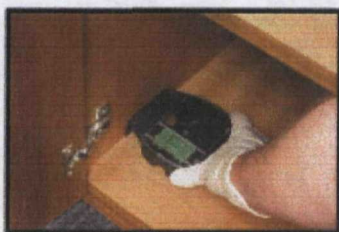
**CAN BE USED
IN A VARIETY
OF LOCATIONS**



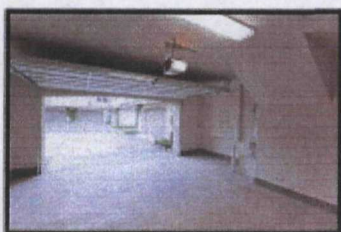
BEHIND APPLIANCES



IN ATTICS



INSIDE CABINETS



GARAGES



BASEMENTS



HOME EXTERIOR

062812