

12455-120

10/25/2010

1 of 10

UNITED STATES ENVIRONMENTAL PROTECTION AGENCY
WASHINGTON, D.C. 20460



OFFICE OF CHEMICAL SAFETY
AND POLLUTION PREVENTION

OCT 25 2010

John Lublinkhof, Ph.D.
Bell Laboratories, Inc.
3699 Kinsman Blvd.
Madison, WI 53704

Dear Dr. Lublinkhof:

Subject: Label Amendment to Add Two Graphics, Modify Marketing Statements, and Add Wording to the Bait Station Label.
EPA Registration No. 12455-120
Decision Number: 441305
Submission Date: October 25, 2010

The labeling referred to above, submitted in connection with registration under the Federal Insecticide, Fungicide, and Rodenticide Act (FIFRA) as amended, is acceptable. Please submit one (1) final printed copy for the above mentioned label before releasing the product for shipment.

Note: Should you wish to add a reference to the company's website on your label, please be aware that the website becomes labeling under the Federal Insecticide Fungicide and Rodenticide Act and is subject to review by the Agency. If the website is false or misleading, the product would be misbranded and unlawful to sell or distribute under FIFRA section 12(a)(1)(E). 40 CFR 156.10(a)(5) list examples of statements EPA may consider false or misleading. In addition, **regardless of whether a website is referenced on your product's label**, claims made on the website may not substantially differ from those claims approved through the registration process. Therefore should the Agency find or if it is brought to our attention that a website contains false or misleading statements or claims substantially differing from the EPA approved registration, the website will be referred to the EPA's Office of Enforcement and Compliance Assurance. If these conditions are not complied with, the registration will be subject to cancellation in accordance with FIFRA section 6(e). Your release for shipment of the product constitutes acceptance of these conditions.

Please submit one (1) final printed copy for the above mentioned label before releasing the product for shipment. If you have questions about this letter, please contact Jennifer Gaines at (703) 305-5967 or via e-mail at gaines.jennifer@epa.gov.

A stamped copy of the label is enclosed for your records.

Sincerely yours,

John Hebert
Product Manager (07)
Insecticide-Rodenticide Branch
Registration Division (7505P)

20910

OUTER PACKAGE - COMPLETE LABEL

TOMCAT[®] MOUSE KILLER I

This Bait Station is Resistant to Weather and to Tampering by Children and Dogs. For Use Indoors and Outdoors.

ACTIVE INGREDIENT:

Bromethalin (CAS #63333-35-7): 0.01 %

OTHER INGREDIENTS*:..... 99.99%

100.00%

*Contains Denatonium Benzoate

ACCEPTED
OCT 25 2010
Under the Federal Insecticide, Fungicide, and Rodenticide Act, as amended, for the pesticide Registered under EPA Reg. No. 12455-120

CAUTION

NET WT:

4 oz. (112g)
4 x 1 oz. Block Bait &
1 Refillable Bait Station

to

16 oz. (454g)
16 x 1 oz. Block Bait &
1 Refillable Bait Station

Manufactured by:



Bell Laboratories, Inc.
3699 Kinsman Blvd.
Madison, WI 53704

Batch Code:

EPA REG. NO. 12455-120

EPA EST. NO. 12455-WI-1

DIRECTIONS FOR USE

It is a violation of Federal law to use this product in a manner inconsistent with its labeling.

READ THIS LABEL: Read this entire label and follow all use directions and use precautions. Use only for the sites, pests and application methods described on this label.

USE RESTRICTIONS:

This bait station may be used in and around (within 50 feet of) buildings accessible to children and pets, consistent with all use restrictions and other requirements indicated on this label.

For control only of house mice. This bait station can only be refilled with the block bait sold with this station. TOMCAT MOUSE KILLER I must be used in and around buildings consistent with all use restrictions and other requirements indicated on this label. Do not place this bait station or stored block bait in any area where there is a possibility of contaminating food or surfaces that come into direct contact with food.

SELECTION OF TREATMENT AREAS: Determine areas where house mice will most likely find and consume the bait. Generally, these areas are along walls, by gnawed openings, in corners and concealed places.

APPLICATION DIRECTIONS:

While wearing gloves, place one block of bait in the bait station. See additional GRAPHICS AND TEXT. Place the bait station at highest point of activity along a wall or in corner where mice or their signs have been seen. If additional units are to be used, place bait stations at 8 to 12 foot intervals. While wearing gloves, replace bait in bait station when bait is consumed or contaminated. Maintain an uninterrupted supply of fresh bait for at least 15 days or until signs of mouse activity cease in infested areas.

**LOADING
BAIT INTO
STATION**

1 REMOVE BAIT CARTRIDGE FROM BOTTOM OF STATION

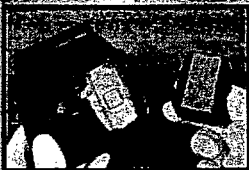


With your left hand push tab up.




While still holding tab, squeeze prongs of bait cartridge and pull away from station.

2 LOAD BAIT



Place bait into cartridge.



Push cartridge into station until it clicks into place.

Follow-up: Wearing gloves, collect and dispose of any leftover bait and all dead animals. To discourage reinfestation, eliminate food, water and harborage as much as possible. If reinfestation does occur, repeat treatment.

PRECAUTIONARY STATEMENTS

HAZARDS TO HUMANS AND DOMESTIC ANIMALS

CAUTION: Keep away from humans, domestic animals, and pets. Bait block contents harmful if swallowed or absorbed through the skin. Do not get in eyes, on skin or clothing. Any person who retrieves carcasses or unused bait following application of this product must wear gloves.

USER SAFETY REQUIREMENTS: As soon as possible, wash hands thoroughly after applying bait and before eating, drinking, chewing gum, using tobacco, or using the toilet.

FIRST AID

HAVE LABEL WITH YOU WHEN OBTAINING TREATMENT ADVICE

IF SWALLOWED:

- Call a poison control center, doctor, or 1-877-854-2494. immediately for treatment advice.
- Have person sip a glass of water if able to swallow.
- Do not induce vomiting unless told to do so by the poison control center or doctor.

IF ON SKIN:

- Wash with plenty of soap and water.

TREATMENT FOR PET POISONING

If an animal eats this bait, call a veterinarian at once.

NOTE TO PHYSICIAN OR VETERINARIAN

Contains the nerve poison bromethalin. This product is not an anticoagulant type rodenticide. For humans or animals ingesting bait and/or showing poisoning signs (such as muscle tremors, loss of hind limb use, or seizures for animals), limit absorption by either emesis or gastric lavage. Sublethal symptoms, if present, would be the result of cerebral edema and should be treated accordingly through administration of an osmotic diuretic and corticosteroid.

ENVIRONMENTAL HAZARDS

This product is extremely toxic to fish, birds and other wildlife. Dogs, cats and other predatory and scavenging mammals and birds might be poisoned if they feed upon animals that have eaten this bait. Do not apply directly to water.

STORAGE AND DISPOSAL

PESTICIDE STORAGE: Store only in original container in a cool, dry place inaccessible to children and pets.

PESTICIDE DISPOSAL: Wastes resulting from the use of this product may be disposed of on site or at an approved waste disposal facility.

CONTAINER HANDLING: Do not reuse or refill this container except as described in the Directions For Use. **If empty:** Place in trash or offer for recycling if available. **If partially filled:** Place in trash or call your local solid waste agency for disposal instructions. Never place unused product down any indoor or outdoor drain.

WARRANTY: To the extent consistent with applicable law, seller makes no warranty, expressed or implied, concerning the use of this product other than indicated on the label. Buyer assumes all risk of use and/or handling of this material when such use and/or handling is contrary to label instructions

BAIT STATION LABEL

TOMCAT[®] MOUSE KILLER I

This Bait Station is Resistant to Weather and to Tampering by Children and Dogs. For Use Indoors and Outdoors.

ACTIVE INGREDIENT:

Bromethalin (CAS #63333-35-7):	0.01 %
OTHER INGREDIENTS*.....	<u>99.99%</u>
	100.00%

*Contains Denatonium Benzoate

EPA REG. NO. 12455-120

EPA EST. NO. 12455-WI-1

Net Wt.: 1 oz. (28g) block bait

DO NOT ALLOW CHILDREN OR PETS TO PLAY WITH THE BAIT STATION

This bait station can only be refilled with the block bait sold with this station.

CAUTION: See outer packaging for **DIRECTIONS FOR USE, FIRST AID** and additional **PRECAUTIONARY STATEMENTS.**

Batch Code:

Model No. MR1

OPTIONAL MARKETING STATEMENTS:

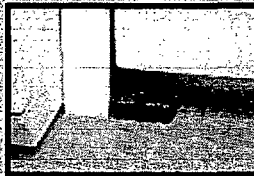
House mice usually consume a lethal dose in a single night's feeding but it may take two or more days from time of consumption for them to die.

- Kills house mice
- House mice cease feeding after consuming a toxic dose
- Refillable house mouse bait station
- Refillable bait station
- See thru lid
- See thru lid for easy monitoring
- With bromethalin
- House mouse killer
- Includes xx oz of refill bait (blocks)
- Contains xx - 1 oz blocks (bait)
- Feeding station
- House mouse feeding station
- Reusable/Refillable
- Portico allows entry from either side
- Made in USA
- x bait refills
- x one ounce refills
- Can be used indoors or (&) out
- Child resistant
- Station is child resistant
- Station is child and dog resistant
- Dog resistant
- Child and dog resistant
- Child, dog and weather resistant
- Weather resistant
- Use indoors and out
- For use indoors and out
- Indoor and outdoor
- Durable design is child and dog resistant
- Kid tested
- Dog Tested
- Kid and Dog Tested
- Kid and Dog Tested Station
- Kid and Dog Resistant
- Kid and Dog Resistant Station
- Kid & Dog Tamper-Resistant
- Clear lid
- Clear lid for easy bait monitoring
- See-thru lid for easy bait monitoring

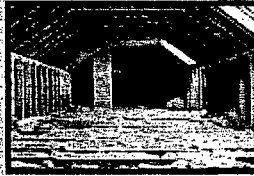
OPTIONAL GRAPHICS:



**CAN BE USED IN A
VARIETY OF
LOCATIONS**



BEHIND APPLIANCES



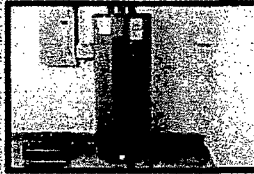
IN ATTICS



INSIDE CABINETS



GARAGES



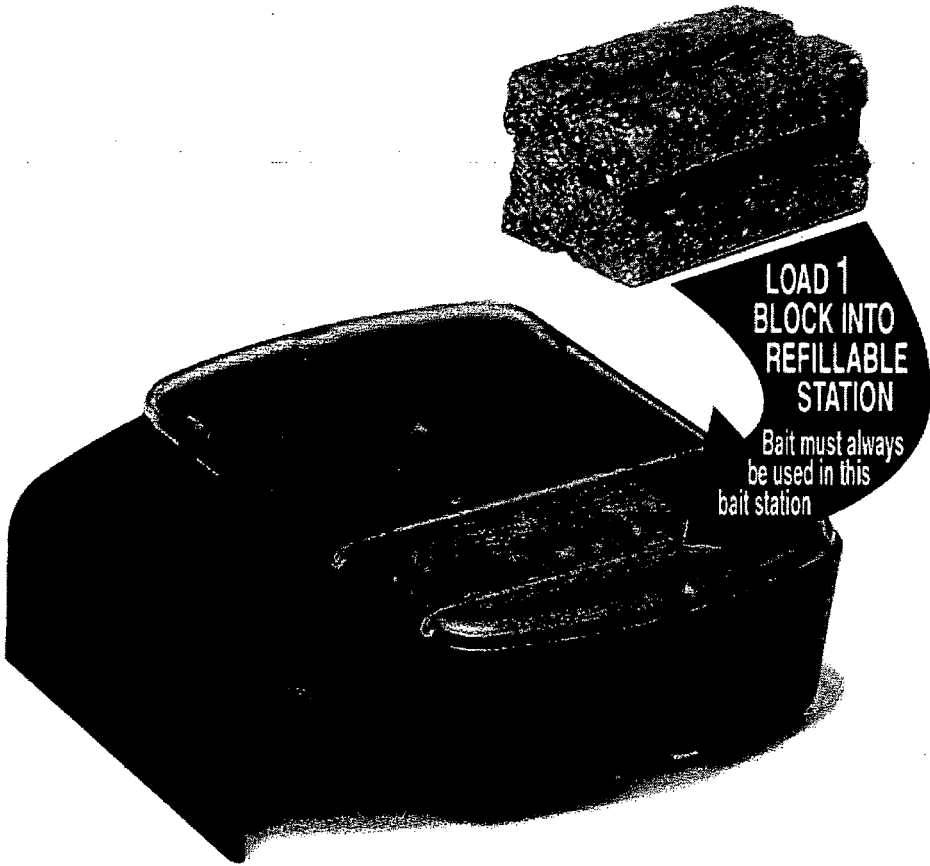
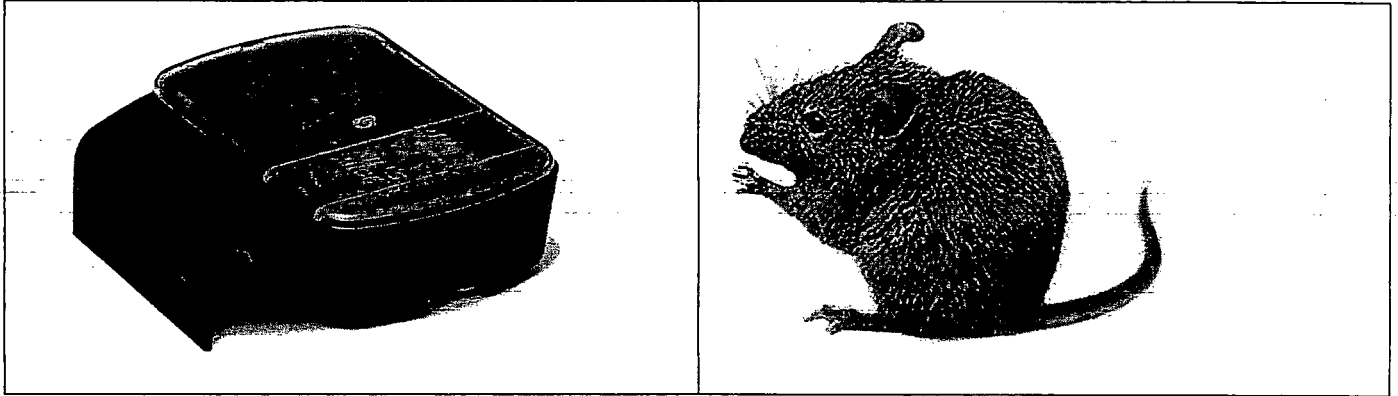
BASEMENTS



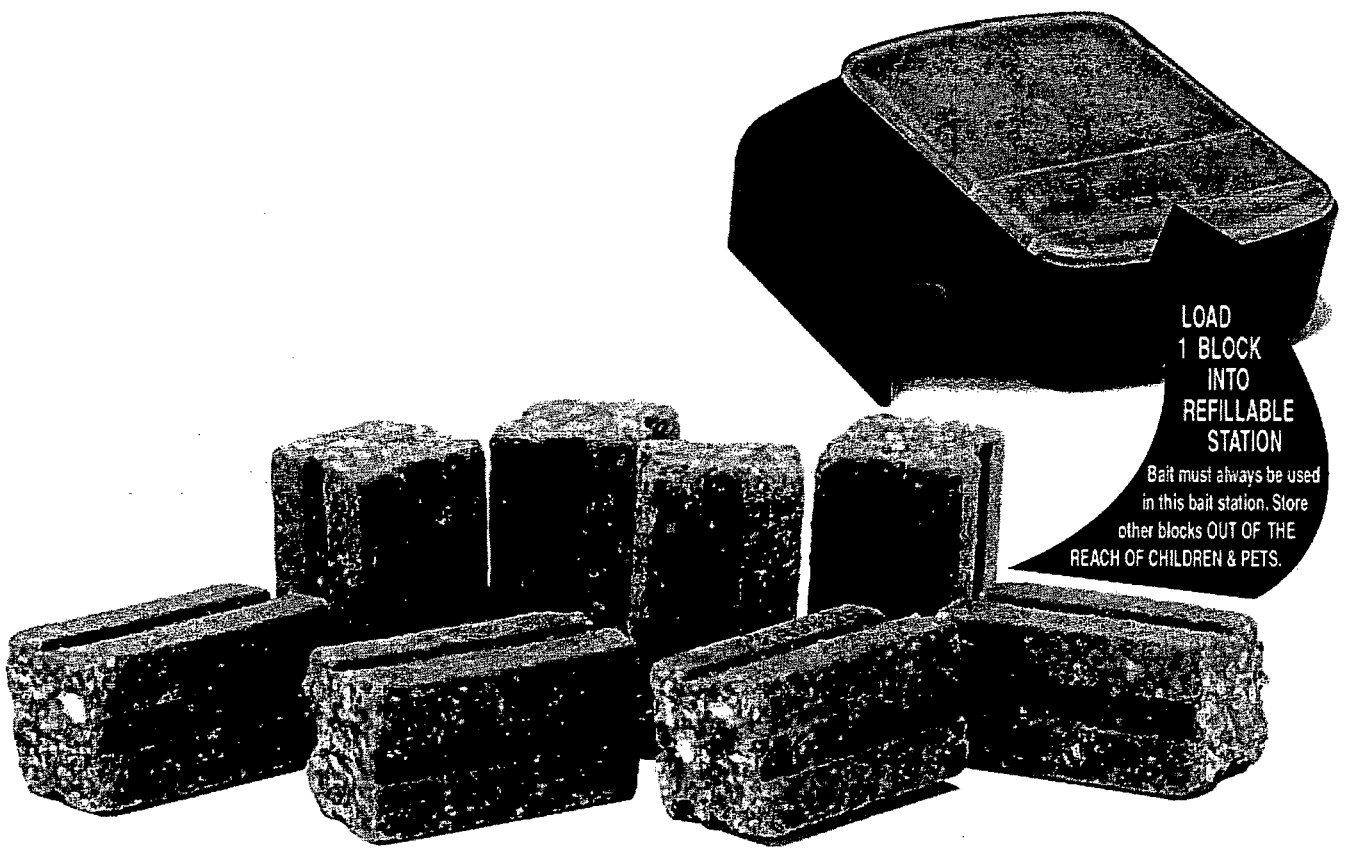
HOME EXTERIOR

**Must adhere to the USE
RESTRICTIONS in the
DIRECTIONS FOR USE
section of this label.**

OPTIONAL GRAPHICS (CONT'D.):



OPTIONAL GRAPHICS (CONT'D.):



**LOAD
1 BLOCK
INTO
REFILLABLE
STATION**

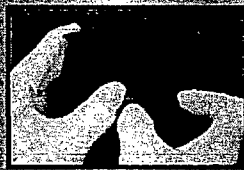
Bait must always be used
in this bait station. Store
other blocks **OUT OF THE
REACH OF CHILDREN & PETS.**

**LOADING
BAIT INTO
STATION**

**1 REMOVE BAIT CARTRIDGE
FROM BOTTOM OF STATION**



With your left hand push tab up.



While still holding tab, squeeze prongs of bait cartridge and pull away from station.

2 LOAD BAIT

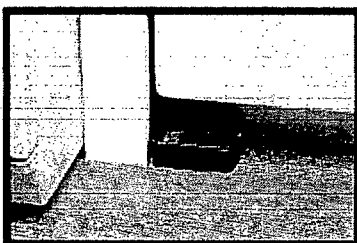


Place bait into cartridge.



Push cartridge into station until it clicks into place.

**CAN BE USED
IN A VARIETY
OF LOCATIONS**



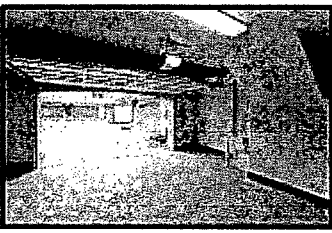
BEHIND APPLIANCES



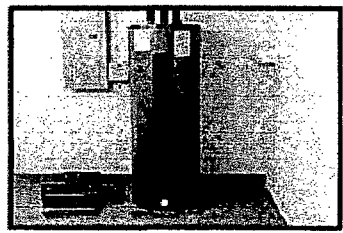
IN ATTICS



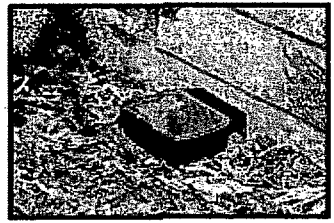
INSIDE CABINETS



GARAGES



BASEMENTS



HOME EXTERIOR