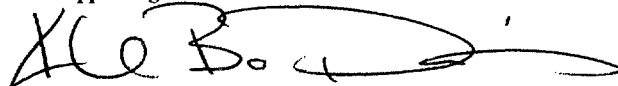
 <p style="text-align: center;">U.S. ENVIRONMENTAL PROTECTION AGENCY Office of Pesticide Programs Registration Division (7505C) 1200 Pennsylvania Ave., N.W. Washington, D.C. 20460</p> <p style="text-align: center;">NOTICE OF PESTICIDE: <input checked="" type="checkbox"/> Registration <input type="checkbox"/> Reregistration</p> <p>(under FIFRA, as amended)</p>	<p>EPA Reg. Number: 12455-120</p>	<p>Date of Issuance: APR 27 2010</p>
	<p>Term of Issuance: Conditional/Time limited to June 4, 2011</p>	
	<p>Name of Pesticide Product: TOMCAT MOUSE KILLER I</p>	
<p>Name and Address of Registrant (include ZIP Code): Bell Laboratories 3699 Kinsman Blvd. Madison, WI 53704</p>		
<p>Note: Changes in labeling differing in substance from that accepted in connection with this registration must be submitted to and accepted by the Registration Division prior to use of the label in commerce. In any correspondence on this product always refer to the above EPA registration number.</p>		
<p>On the basis of information furnished by the registrant, the above named pesticide is hereby registered/reregistered under the Federal Insecticide, Fungicide and Rodenticide Act.</p> <p>Registration is in no way to be construed as an endorsement or recommendation of this product by the Agency. In order to protect health and the environment, the Administrator, on his motion, may at any time suspend or cancel the registration of a pesticide in accordance with the Act. The acceptance of any name in connection with the registration of a product under this Act is not to be construed as giving the registrant a right to exclusive use of the name or to its use if it has been covered by others.</p> <p>This product is conditionally registered in accordance with FIFRA section 3(c)(7)(A) provided that you:</p> <ol style="list-style-type: none"> 1. Submit and/or cite all data required for registration/reregistration/registration review of your product when the Agency requires all registrants of similar products to submit such data. 2. Make the following label changes before you release the product for shipment: <ol style="list-style-type: none"> a. Revise the EPA Registration Number to read, "EPA Reg. No. 12455-120." 		
<p>Signature of Approving Official:  Kable Bo Davis, Acting Product Manager (07) Insecticide-Rodenticide Branch, Registration Division (7505P)</p>	<p>Date: APR 27 2010</p>	

2/10

- b. Add "INGREDIENTS" after "OTHER" on all labels.
- c. Revise the first sentence of the **APPLICATION DIRECTIONS** to read "Place one bait block in the bait station."
- d. Make the following revisions to the "**OPTIONAL MARKETING STATEMENT**" section:
 - a. Modify the statement "Compact design fits nearly anywhere." to read "Can be used in a variety of locations."
- e. Make the following deletion to the "**OPTIONAL GRAPHICS**" section:
 - a. Delete the image of the mouse eating the bait block.

3. As stated in 40CFR156.140(a)(4), a batch code must be included on the label or package for container and containment for nonrefillables.

4. The Confidential Statement of Formula (CSF) dated January 7, 2010, is acceptable. All other versions are obsolete.

5. Should you wish to add a reference to the company's website on your label, please be aware that the website becomes labeling under the Federal Insecticide Fungicide and Rodenticide Act and is subject to review by the Agency. If the website is false or misleading, the product would be misbranded and unlawful to sell or distribute under FIFRA section 12(a)(1)(E). 40 CFR 156.10(a)(5) list examples of statements EPA may consider false or misleading. In addition, **regardless of whether a website is referenced on your product's label**, claims made on the website may not substantially differ from those claims approved through the registration process. Therefore should the Agency find or if it is brought to our attention that a website contains false or misleading statements or claims substantially differing from the EPA approved registration, the website will be referred to the EPA's Office of Enforcement and Compliance Assurance.

6. *This product is not consistent with the Agency's revised May 28, 2008 "Risk Mitigation Decision for Ten Rodenticides." EPA anticipates cancellation of those existing products that are not consistent with the Risk Mitigation Decision to occur no later than June 4, 2011. In the meantime, EPA is approving new registrations and amendments to existing registrations of rodenticide bait products, on a time-limited basis, so long as the registrations do not present greater risks of unreasonable adverse effects than existing products. Accordingly, this amendment is approved only subject to the condition that the registration shall expire on June 4, 2011. This condition of registration may be amended in conjunction with amendments to conform to the Risk Mitigation Decision. Absent such amendments, product released for shipment by the registrant after June 4, 2011, would be in violation of FIFRA.*

If these conditions are not complied with, the registration will be subject to cancellation in accordance with FIFRA section 6(e). Your release for shipment of the product constitutes acceptance of these conditions.

Page 3
EPA Reg. No. 12455-120

Submit one copy of the revised final printed label for the record before you release the product for shipment. A stamped copy of the label is enclosed for your records. If you have any questions regarding this notice, please contact Jennifer Gaines via e-mail at gaines.jennifer@epa.gov or by telephone at (703) 305-5967.

Kable Bo Davis
Acting Product Manager (07)
Insecticide-Rodenticide Branch
Registration Division (7505P)

4/9

OUTER PACKAGE - COMPLETE LABEL

TOMCAT[®] MOUSE KILLER I

KILLS MICE

INCLUDES BAIT BLOCKS

**THIS BAIT STATION IS NOT TAMPER-RESISTANT. Use Indoors
Only in Areas Inaccessible to Children and Pets.**

ACTIVE INGREDIENT:

Bromethalin (CAS #63333-35-7):	0.01 %
OTHER*:.....	99.99%
	100.00%

*Contains Denatonium Benzoate

**ACCEPTED
with COMMENTS
In EPA Letter Dated
APR 27 2010**

Under the Federal Insecticide,
Fungicide, and Rodenticide Act,
as amended, for the pesticide
registered under EPA Reg. No.
12455-120

**KEEP OUT OF REACH OF CHILDREN
CAUTION**

NET CONTENTS:

One Bait Station plus 4 x 1 oz. (28 g) bait blocks
to
One Bait Station plus 16 x 1 oz. (28 g) bait blocks

Manufactured by:



Bell Laboratories, Inc.
3699 Kinsman Blvd.
Madison, WI 53704

Batch Code:

EPA REG. NO. 12455-REN

EPA EST. NO. 12455-WI-1

DIRECTIONS FOR USE

It is a violation of Federal law to use this product in a manner inconsistent with its labeling.

READ THIS LABEL: Read this entire label and follow all use directions and use precautions. Use only for the sites, pests and application methods described on this label.

USE RESTRICTIONS:

DO NOT USE THIS PRODUCT OUTDOORS OR IN AREAS ACCESSIBLE TO CHILDREN, PETS, DOMESTIC ANIMALS, OR NONTARGET WILDLIFE.

For control only of house mice inside of homes. A bait block must be used in the accompanying bait station. This bait station must be used in homes consistent with all use restrictions and other requirements indicated on this label. Do not place this bait station in any area where there is a possibility of contaminating food or surfaces that come into direct contact with food.

SELECTION OF TREATMENT AREAS: Determine areas where house mice will most likely find and consume the bait. Generally, these areas are along walls, by gnawed openings, in corners and concealed places.

APPLICATION DIRECTIONS:

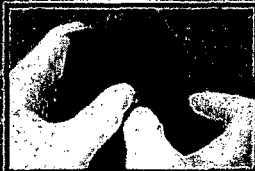
Place one block bait in the bait station. See additional GRAPHICS AND TEXT. Place the bait station at highest point of activity along a wall or in corner where mice or their signs have been seen. If additional units are purchased, place bait stations at 8 to 12 foot intervals. Replace bait in bait station when bait is consumed or contaminated. Maintain an uninterrupted supply of fresh bait for at least 15 days or until signs of mouse activity cease in infested area.

**LOADING
BAIT INTO
STATION**

**1 REMOVE BAIT CARTRIDGE
FROM BOTTOM OF STATION**



With your left hand push safety tab up.



While still holding safety tab, squeeze prongs of bait cartridge and pull away from station.

2 LOAD BAIT



Place bait into cartridge.



Push cartridge into station until it clicks into place.

Follow-up: While wearing gloves, collect and dispose of any leftover bait and bait stations. To discourage reinfestation, eliminate food, water and harborage as much as possible. If reinfestation does occur, repeat treatment.

**PRECAUTIONARY STATEMENTS
HAZARDS TO HUMANS AND DOMESTIC ANIMALS**

CAUTION: Keep away from humans, domestic animals, and pets. Bait block contents harmful if swallowed or absorbed through the skin. Do not get in eyes, on skin or clothing. Any person who retrieves carcasses or unused bait following application of this product must wear gloves.

USER SAFETY REQUIREMENTS: As soon as possible, wash hands thoroughly after applying bait and before eating, drinking, chewing gum, using tobacco, or using the toilet.

FIRST AID

HAVE LABEL WITH YOU WHEN OBTAINING TREATMENT ADVICE

IF SWALLOWED:

- Call a poison control center, doctor, or 1-877-854-2494, or 1-800-858-7378* immediately for treatment advice.
- Have person sip a glass of water if able to swallow.
- Do not induce vomiting unless told to do so by the poison control center or doctor.

IF ON SKIN:

- Wash with plenty of soap and water.

* Also call this number for information on health concerns and pesticide incidents.

TREATMENT FOR PET POISONING

If an animal eats this bait, call a veterinarian at once.

NOTE TO PHYSICIAN OR VETERINARIAN

Contains the nerve poison bromethalin. This product is not an anticoagulant type rodenticide. For humans or animals ingesting bait and/or showing poisoning signs (such as muscle tremors, loss of hind limb use, or seizures for animals), limit absorption by either emesis or gastric lavage. Sublethal symptoms, if present, would be the result of cerebral edema and should be treated accordingly through administration of an osmotic diuretic and corticosteroid.

ENVIRONMENTAL HAZARDS

This product is extremely toxic to fish, birds and other wildlife. Dogs and scavenging mammals and birds might be poisoned if they feed upon animals that have eaten this bait. Do not apply this product directly to water.

7
9

STORAGE AND DISPOSAL

PESTICIDE STORAGE: Store only in original container in a cool, dry place inaccessible to children and pets.

PESTICIDE DISPOSAL: Wastes resulting from the use of this product may be disposed of on site or at an approved waste disposal facility.

CONTAINER HANDLING: Nonrefillable container. Do not reuse or refill this container. **If empty:** Place in trash or offer for recycling if available. **If partially filled:** Place in trash or call your local solid waste agency for disposal instructions. Never place unused product down any indoor or outdoor drain.

WARRANTY: To the extent consistent with applicable law, seller makes no warranty, expressed or implied, concerning the use of this product other than indicated on the label. Buyer assumes all risk of use and/or handling of this material when such use and/or handling is contrary to label instructions.

BAIT STATION LABEL

TOMCAT[®] MOUSE KILLER I

**THIS BAIT STATION IS NOT TAMPER-RESISTANT. Use Indoors
Only in Areas Inaccessible to Children and Pets.**

ACTIVE INGREDIENT:

Bromethalin (CAS #63333-35-7):	0.01 %
OTHER*.....	<u>99.99%</u>
	100.00%

*Contains Denatonium Benzoate

EPA REG. NO. 12455-REN

EPA EST. NO. 12455-WI-1

Net Contents: 1 x 1 oz. (28g) bait block

KEEP OUT OF REACH OF CHILDREN

CAUTION : See outer packaging for **DIRECTIONS FOR USE, FIRST AID** and additional **PRECAUTIONARY STATEMENTS.**

Model No. MR1

OPTIONAL MARKETING STATEMENTS:

House mice usually consume a lethal dose in a single night's feeding but it may take two or more days from time of consumption for them to die.

Kills mice

40% more bait than 20g size per placement

100% more bait than 1/2 oz size per placement

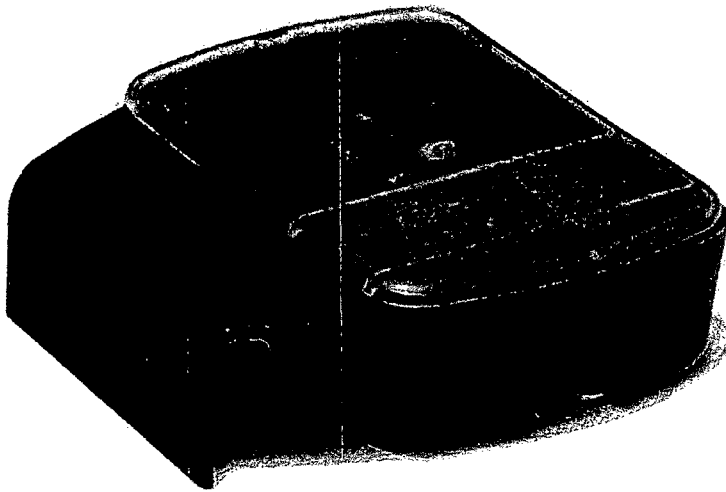
House mice cease feeding after consuming a toxic dose

Refillable bait station

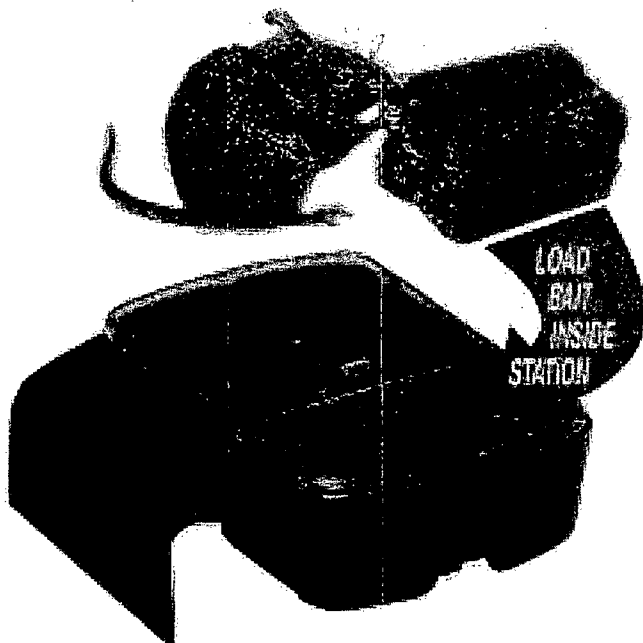
OPTIONAL MARKETING STATEMENTS (CONT'D):

- Refillable mouse bait station
- See thru lid
- See thru lid for easy monitoring
- Convenient size
- Compact design
- With bromethalin
- Mouse killer
- Includes xx oz of refill bait (blocks)
- Contains xx – 1 oz blocks (bait)
- Feeding station
- Mouse feeding station
- Reusable/Refillable
- Portico allows entry from either side
- More bait for the money
- More bait per placement
- Made in USA

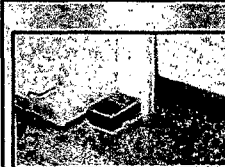
OPTIONAL GRAPHICS:



OPTIONAL GRAPHICS CONT'D):



**COMPACT DESIGN
FITS NEARLY
ANYWHERE**



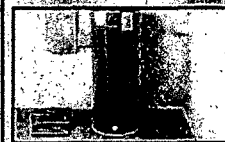
NEAR APPLIANCES



INSIDE CABINETS



GARAGES



BASEMENTS



ATTICS

**Must adhere to the
Use Restrictions
in the Directions
for Use section of
this label.**