

12455-97

7/28/2011

1089

UNITED STATES ENVIRONMENTAL PROTECTION AGENCY
WASHINGTON, D.C. 20460



OFFICE OF CHEMICAL SAFETY
AND POLLUTION PREVENTION

JUL 28 2011

Bell Laboratories
3699 Kinsman Blvd.
Madison, WI 53704

Decision # 448582
300 5-900489
1155

Attention: Mr. John Lublinkhof

- Subject** F-Trac Place Pacs
EPA Reg. No. 12455-97
Your submission of April 27, 2011
- Purpose** This submission requests to revise the label for this product, under sec 3 of the Federal Insecticide, Fungicide, and Rodenticide Act (FIFRA).
- Labeling** The labeling submitted with the above letter, is acceptable, provided you submit one (1) copy of final printed labeling to us, before you ship your product.
- Existing stocks** Stocks of product with existing labels may be used for eighteen (18) months.
- Consequence for non-compliance** If these conditions are not complied with, the registration will be subject to cancellation in accordance with FIFRA section 6(e). Your release for shipment of the product constitutes acceptance of these conditions.

Questions

If you have questions about this letter, please contact Dan Peacock at 703-305-5407 (by phone) or peacock.dan@epa.gov (by E-Mail).

Sincerely yours,



Rosanna Louie-Juzwiak
Product Manager (07)
Insecticide-Rodenticide Branch
Registration Division (7505P)

Enclosures

1. Stamped Label
2. Minimum Type Size Requirements for Final Printed Labels

**Letter
Location**

Dan Peacock, C:\Documents and Settings\dpeacock\Desktop\Backup, 16gb Flash Drive\Bromethalin\Registration Actions\12455-97\12455-97, 4-27-2011 label rev, EPA approval ltr, 7-21-2011.doc

3029

012455-00097.20110726

OUTER CONTAINER - COMPLETE LABEL - ALL PACKAGE WEIGHTS

F-TRAC PLACE PACS

[Alternate Brand Name] **Fastrac Place Pacs***

[Qualifier statement immediately following brand name] * Norway rats, Roof rats and House mice usually consume a lethal dose in a single night's feeding, but it may take two or more days from the time of bait consumption for these rodents to die.

This Product May Only be Used Inside and Within 50 Feet of Buildings or Inside of Transport Vehicles (Ships, Trains, Aircraft)

KILLS NORWAY RATS, ROOF RATS AND HOUSE MICE

KILLS ANTICOAGULANT RESISTANT NORWAY RATS, ROOF RATS AND HOUSE MICE

JUL 28 2011

ACCEPTED

Norway rats, Roof rats and House mice cease feeding after consuming a toxic dose.

ACTIVE INGREDIENT:		Under the Federal Insecticide, Fungicide, and Rodenticide Act, as amended, for the pesticide registered under:
Bromethalin (CAS #63333-35-7): 0.01%	
INERT INGREDIENTS*: 99.99%	
	TOTAL	100.00%
*Contains Denatonium Benzoate		EPA. Reg. No. <u>12455-97</u>

**KEEP OUT OF REACH OF CHILDREN
CAUTION**

FIRST AID

HAVE LABEL WITH YOU WHEN OBTAINING TREATMENT ADVICE

IF SWALLOWED:

- Call a poison control center, doctor, or 1-877-854-2494 immediately for treatment advice.
- Have person sip a glass of water if able to swallow.
- Do not induce vomiting unless told to do so by the poison control center or doctor.

TREATMENT FOR PET POISONING

If an animal eats this bait, call a veterinarian at once.

NOTE TO PHYSICIAN OR VETERINARIAN

Contains the nerve poison Bromethalin. This product is not an anticoagulant type rodenticide. For humans or animals ingesting bait and/or showing poisoning signs (such as muscle tremors, loss of hind limb use, or seizures for animals), limit absorption by either emesis or gastric lavage. Sublethal symptoms, if present, would be the result of cerebral edema and should be treated accordingly through administration of an osmotic diuretic and corticosteroid.

4069

See Back/Side Panel for First Aid and additional precautionary statements.

NET CONTENTS: 121 x 0.53 oz (15g) Place Pacs
to
250 x 0.53 oz (15 g) Place Pacs

Manufactured by:

Batch Code:



Bell Laboratories, Inc.
3699 Kinsman Blvd.
Madison, WI 53704

EPA REG. NO. 12455-97

EPA EST. NO. 12455-WI-1

DIRECTIONS FOR USE

It is a violation of Federal law to use this product in a manner inconsistent with its labeling.

READ THIS LABEL: Read this entire label and follow all use directions and use precautions. Use only for the sites, pests, and application methods described on this label.

IMPORTANT: Do not expose children, pets, or nontarget animals to rodenticides. To help prevent exposure:

1. Store unused product out of reach of children and pets.
2. Apply bait in locations out of reach of children, pets, domestic animals and nontarget wildlife, or in tamper-resistant bait stations. These stations must be resistant to destruction by dogs and by children under six years of age, and must be used in a manner that prevents such children from reaching into bait compartments and obtaining bait. If bait can be shaken from bait stations when they are lifted, units must be secured or otherwise immobilized. Stronger bait stations are needed in areas open to hooved livestock, raccoons, bears or other potentially destructive animals, or in areas prone to vandalism.
3. Dispose of product container and unused, spoiled or unconsumed bait as specified on this label.

Note: Bait stations are mandatory for outdoor, above-ground use. Tamper-resistant bait stations must be used if children, pets, non-target mammals, or birds may access the bait.

USE RESTRICTIONS: This product may only be used to control Norway rats, roof rats and house mice in and around homes, industrial, commercial, agricultural, and public buildings, and similar man-made structures. It may also be used in transport vehicles (ships, trains, aircraft) and in and around related port or terminal buildings. **Do not apply further than 50 feet from buildings.** Do not place near or inside ventilation duct openings. Do not contaminate water, food, feedstuffs, food or feed handling equipment, or milk or meat handling equipment or surfaces that come into direct contact with food. When used in USDA-inspected facilities, this product must be applied in tamper-resistant bait stations. Do not broadcast bait.

Do not sell this product in individual containers holding less than 4 pounds of bait.

SELECTION OF TREATMENT AREAS: Determine areas where rats or mice will most likely find and consume the bait. Generally, these areas are along walls, by gnawed openings, in or beside burrows, in corners and concealed places, between floors and walls, or in locations where rodents or their signs have been seen. Protect bait from rain and snow. Remove as much alternative food as possible.

APPLICATION DIRECTIONS:

Rats: Apply 2 to 12 place pacs per placement (usually at intervals of 15 to 30 feet). Adjust the amount of bait applied to the level of rat feeding expected at each bait placement.

Mice: Apply 1 place pac per bait placement. Space placements at intervals of 8 to 12 feet in infested areas. Up to two place pacs may be used at points of extremely high mouse activity.

Baiting Strategy: Highest bait consumption is expected to occur on the first day or two after treatment begins. After several days, inspect the placement and replenish bait at sites where there is evidence of heavy feeding or where there is continued evidence of rodent activity.

Normally, the volume of bait consumed will be significantly less with bromethalin baits than with anticoagulant baits. Although one night's feeding will usually provide a lethal dose, maintain bait for at least one week to provide all rodents a chance to feed on the bait. Continue baiting until all signs of feeding have ceased.

FOLLOW-UP: Replace contaminated or spoiled bait immediately. Using gloves, collect and properly dispose of all dead, exposed animals and leftover bait. To prevent reinfestation, limit sources of rodent food, water, and harborage as much as possible. If reinfestation does occur, repeat treatment. Where a continuous source of infestation is present, establish permanent bait stations and replenish as needed.

PRECAUTIONARY STATEMENTS

Hazards to Humans and Domestic Animals

CAUTION: Harmful if swallowed. Keep away from children, domestic animals and pets.

All handlers (including applicators) must wear shoes plus socks, and gloves. Any person who retrieves carcasses or unused bait following application of this product must wear gloves.

User Safety Requirements

Follow manufacturer's instructions for cleaning/maintaining PPE. If no such instructions for washables, use detergent and hot water. Keep and wash PPE separately from other laundry. Remove PPE immediately after handling this product. Wash the outside of gloves before removing. As soon as possible, wash hands thoroughly after applying bait and before eating, drinking, chewing gum, using tobacco or using the toilet and change into clean clothing.

ENVIRONMENTAL HAZARDS

This product is extremely toxic to mammals and birds. Dogs and other predatory and scavenging mammals and birds might be poisoned if they feed upon animals that have eaten this bait. Do not apply directly to water, or to areas where surface water is present or to intertidal areas below the mean high water mark. Runoff also may be hazardous to aquatic organisms in water adjacent to treated areas. Do not contaminate water when disposing of equipment wash water or rinsate.

STORAGE AND DISPOSAL

Do not contaminate water, food or feed by storage or disposal.

STORAGE: Store only in original container in a cool, dry place inaccessible to children and pets. Keep containers closed and away from other chemicals.

PESTICIDE DISPOSAL: Wastes resulting from the use of this product may be placed in trash or delivered to an approved waste disposal facility.

CONTAINER HANDLING: Nonrefillable container. Do not reuse or refill this container. Offer for recycling, if available. Dispose of empty container by placing in trash, at an approved disposal facility or by incineration.

WARRANTY: To the extent consistent with applicable law, seller makes no warranty, expressed or implied, concerning the use of this product other than indicated on the label. Buyer assumes all risk of use and/or handling of this material when such use and/or handling is contrary to label instructions.

INNER CONTAINER – ABBREVIATED LABEL – ALL PACKAGE WEIGHTS

F-TRAC PLACE PAC

[Alternate Brand Name] **Fastrac Place Pacs***

[Qualifier statement immediately following brand name] * Norway rats, Roof rats and House mice usually consume a lethal dose in a single night's feeding, but it may take two or more days from the time of bait consumption for these rodents to die.

This Product May Only be Used Inside and Within 50 Feet of Buildings or Inside of Transport Vehicles (Ships, Trains, Aircraft)

KILLS NORWAY RATS, ROOF RATS AND HOUSE MICE

KILLS ANTICOAGULANT RESISTANT NORWAY RATS, ROOF RATS AND HOUSE MICE

Norway rats, Roof rats and House mice cease feeding after consuming a toxic dose.

ACTIVE INGREDIENT:

Bromethalin (CAS #63333-35-7):..... 0.01%

INERT INGREDIENTS*..... 99.99%

TOTAL 100.00%

*Contains Denatonium Benzoate

**KEEP OUT OF REACH OF CHILDREN
CAUTION**

FIRST AID

HAVE LABEL WITH YOU WHEN OBTAINING TREATMENT ADVICE

IF SWALLOWED:

- Call a poison control center, doctor, or 1-877-854-2494 immediately for treatment advice.
- Have person sip a glass of water if able to swallow.
- Do not induce vomiting unless told to do so by the poison control center or doctor.

TREATMENT FOR PET POISONING

If an animal eats this bait, call a veterinarian at once.

NOTE TO PHYSICIAN OR VETERINARIAN

Contains the nerve poison Bromethalin. This product is not an anticoagulant type rodenticide. For humans or animals ingesting bait and/or showing poisoning signs (such as muscle tremors, loss of hind limb use, or seizures for animals), limit absorption by either emesis or gastric lavage. Sublethal symptoms, if present, would be the result of cerebral edema and should be treated accordingly through administration of an osmotic diuretic and corticosteroid.

SEE LABEL ON OUTER PACKAGING FOR ADDITIONAL PRECAUTIONARY INFORMATION

DIRECTIONS FOR USE

It is a violation of Federal law to use this product in a manner inconsistent with its labeling. See outer package label for complete DIRECTIONS FOR USE including USE RESTRICTIONS. It is illegal to sell this product unless it is accompanied by a complete set of accepted labeling.

NET CONTENTS: 0.53 oz. (15 g)

IT IS ILLEGAL TO SELL THIS PLACE PAC INDIVIDUALLY

Manufactured by:



Bell Laboratories, Inc.
3699 Kinsman Blvd.
Madison, WI 53704

EPA REG. NO. 12455-97

EPA EST. NO. 12455-WI-1

OPTIONAL MARKETING STATEMENTS:

With Bromethalin

Kills Anticoagulant Resistant Norway Rats, Roof Rats, and House Mice

Norway Rats, Roof Rats, and House Mice Cease Feeding After Consuming a Toxic Dose

For Use in and Around Homes and Buildings

For Use in and Around Agricultural Buildings

Palatable Formulation

Mouse and Rat Bait

For Indoor & Outdoor Rodent Control

Can be Used Indoors or Out

Bait Pacs Can be Used Indoors or Out

Place Pacs Fit Easily Into Rat Burrows Where Rats Live and Breed

DO NOT OPEN PLACE PAC - Simply Position in Desired Locations. Rodents will Open It Themselves

Place Bait in Locations Inaccessible to Children, Pets, and Wildlife or in Tamper-resistant Bait Stations Where Rodents or Their Signs Have Been Seen

Maintain an Uninterrupted Supply of Bait for 15 Days (mice) or 10 days (rats) or Until All Signs of Activity Stop

Ready To Use

Ready to Use Place Pac Pellets

Made in USA

New Formulation [*six months*]

New Formula [*six months*]

New Color [*six months*]

Updated Formulation [*six months*]

Updated Formula [*six months*]

Updated Color [*six months*]

Vibrant Purple Color

New Formulation, Same Active Ingredient [*six months*]

New Formula, Same Active Ingredient [*six months*]

OPTIONAL GRAPHICS:

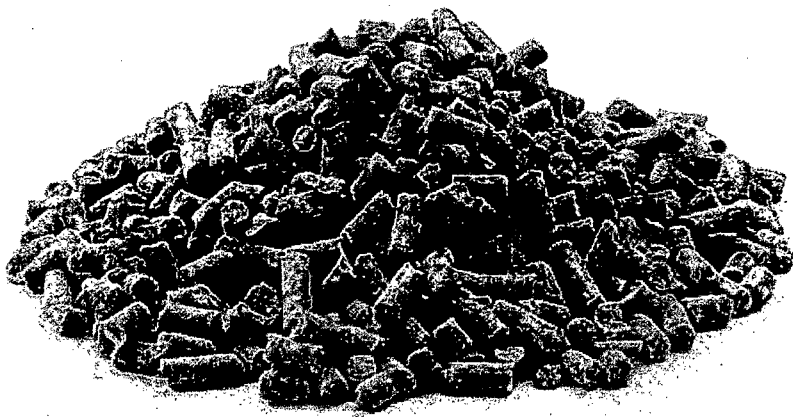
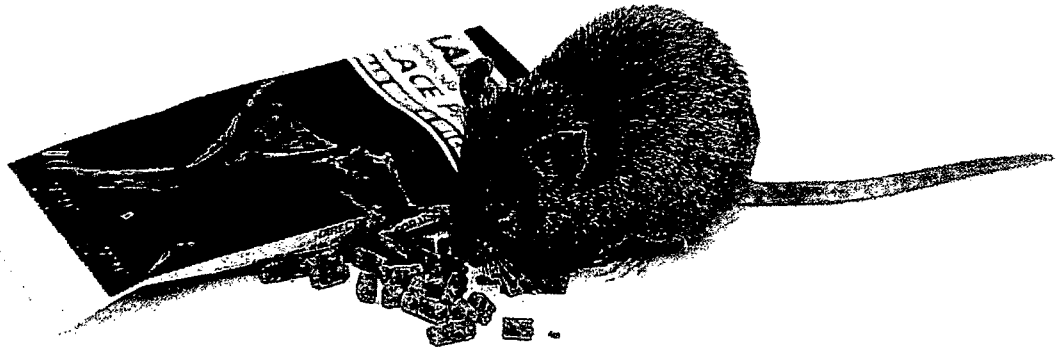


Photo is not representative of a label placement

072611