

12455-95

3/28/2011

117

UNITED STATES ENVIRONMENTAL PROTECTION AGENCY  
WASHINGTON, D.C. 20460



OFFICE OF CHEMICAL SAFETY  
AND POLLUTION PREVENTION

Decision # 446942  
300 5-892698  
1155

MAR 28 2011

Bell Laboratories  
3699 Kinsman Blvd.  
Madison, WI 53704

Attention: Mr. John Lublinkhof

<b>Subject</b>	F-Trac All-Weather Blox EPA Reg. No. 12455-95 Your Regular Amendment Submitted as a Notification on December 8, 2010
<b>Purpose</b>	This submission revises the graphics and precautionary text for this product, under sec 3 of the Federal Insecticide, Fungicide, and Rodenticide Act (FIFRA).
<b>Labeling</b>	The labeling submitted with the above letter, under the Federal Insecticide, Fungicide, and Rodenticide Act (FIFRA) is acceptable, provided you submit one (1) copy of final printed labeling to us, before you ship your product.
<b>Compliance with RMD</b>	This product is in full compliance with the Agency's revised May 28, 2008 "Risk Mitigation Decision for Ten Rodenticides".
<b>Existing stocks</b>	<b>Existing Stocks Provisions</b> <ul style="list-style-type: none"><li>• The registrant may not distribute or sell existing stocks of this product after June 4, 2011 unless they conform to the terms and conditions of registration as amended today.</li><li>• Any person other than the registrant may sell and distribute existing stocks of this product with the previously approved label until such stocks are exhausted.</li><li>• Any person may use existing stocks of this product with the previously approved label until such stocks are exhausted.</li></ul>

**Consequence for non-compliance** If these conditions are not complied with, the registration will be subject to cancellation in accordance with FIFRA section 6(e). Your release for shipment of the product constitutes acceptance of these conditions.

**Questions** If you have questions about this letter, please contact Dan Peacock at 703-305-5407 (by phone) or [peacock,dan@epa.gov](mailto:peacock,dan@epa.gov) (by E-Mail).

Sincerely yours,



Venus Eagle  
Product Manager (01)  
Insecticide-Rodenticide Branch  
Registration Division (7505P)

**Enclosures**

1. Stamped Label
2. Minimum Type Size Requirements for Final Printed Labels

**Letter Location** Dan Peacock, C:\Documents and Settings\dpeacock\Desktop\Backup, 16gb Flash Drive\Bromethalin\Registration Actions\12455-95\12455-95, amend, graphics, prec text, 3-17-2011.doc

3/7

012455-00095.20110317

# F-TRAC ALL-WEATHER BLOX

[Alternate Brand Name] **Fastrac All-Weather Blox\***

[Qualifier statement immediately following brand name] \* Norway rats, Roof rats and House mice usually consume a lethal dose in a single night's feeding, but it may take two or more days from the time of bait consumption for these rodents to die.

**This Product May Only be Used Inside and Within 50 Feet of Buildings or Inside of Transport Vehicles (Ships, Trains, Aircraft)**

**Mold Resistant      Moisture Resistant**

**KILLS NORWAY RATS, ROOF RATS AND HOUSE MICE**

**KILLS ANTICOAGULANT RESISTANT NORWAY RATS, ROOF RATS AND HOUSE MICE**

ACCEPTED

MAR 28 2011

Norway rats, roof rats and house mice cease feeding ~~under the Federal Insecticide, Fungicide, and Rodenticide Act, as amended, for the pesticide registered under:~~

ACTIVE INGREDIENT:

Bromethalin (CAS #63333-35-7): ..... 0.01%

INERT INGREDIENTS\*.....

TOTAL

EPA Reg. No: 1 2455-95  
100.00%

\*Contains Denatonium Benzoate

**KEEP OUT OF REACH OF CHILDREN**

## CAUTION

### FIRST AID

**HAVE LABEL WITH YOU WHEN OBTAINING TREATMENT ADVICE**

#### IF SWALLOWED:

- Call a poison control center, doctor, or 1-877-854-2494 immediately for treatment advice.
- Have person sip a glass of water if able to swallow.
- Do not induce vomiting unless told to do so by the poison control center or doctor.

### TREATMENT FOR PET POISONING

If an animal eats this bait, call a veterinarian at once.

### NOTE TO PHYSICIAN OR VETERINARIAN

Contains the nerve poison Bromethalin. This product is not an anticoagulant type rodenticide. For humans or animals ingesting bait and/or showing poisoning signs (such as muscle tremors, loss of hind limb use, or seizures for animals), limit absorption by either emesis or gastric lavage. Sublethal symptoms, if present, would be the result of cerebral edema and should be treated accordingly through administration of an osmotic diuretic and corticosteroid.

See Back/Side Panel for First Aid and additional precautionary statements.

4/7

NET WEIGHT: 4-50 lb.

Manufactured by:

Batch Code:



**Bell Laboratories, Inc.**  
3699 Kinsman Blvd.  
Madison, WI 53704

EPA REG. NO. 12455-95

EPA EST. NO. 12455-WI-1

### **DIRECTIONS FOR USE**

It is a violation of Federal law to use this product in a manner inconsistent with its labeling.

**READ THIS LABEL:** Read this entire label and follow all use directions and use precautions. Use only for the sites, pests, and application methods described on this label.

**IMPORTANT:** Do not expose children, pets, or nontarget animals to rodenticides. To help prevent exposure:

1. Store unused product out of reach of children and pets.
2. Apply bait in locations out of reach of children, pets, domestic animals and nontarget wildlife, or in tamper-resistant bait stations. These stations must be resistant to destruction by dogs and by children under six years of age, and must be used in a manner that prevents such children from reaching into bait compartments and obtaining bait. If bait can be shaken from bait stations when they are lifted, units must be secured or otherwise immobilized. Stronger bait stations are needed in areas open to hoofed livestock, raccoons, bears or other potentially destructive animals, or in areas prone to vandalism.
3. Dispose of product container and unused, spoiled or unconsumed bait as specified on this label.

**Note:** Bait stations are mandatory for outdoor, above-ground use. Tamper-resistant bait stations must be used if children, pets, non-target mammals, or birds may access the bait.

**USE RESTRICTIONS:** This product may only be used for control of Norway rats, roof rats and house mice in and around homes, industrial, commercial, agricultural, and public buildings, and similar man-made structures. **Do not apply further than 50 feet from buildings.** Do not place near or inside ventilation duct openings. Do not contaminate water, food, feedstuffs, food or feed handling equipment, or milk or meat handling equipment or surfaces that come into direct contact with food. When used in USDA-inspected facilities, this product must be applied in tamper-resistant bait stations. Do not broadcast bait.

Do not sell this product in individual containers holding less than 4 pounds of bait.

**SELECTION OF TREATMENT AREAS:** Determine areas where rats or mice will most likely find and consume the bait. Generally, these areas are along walls, by gnawed openings, in or beside burrows, in corners and concealed places, between floors and walls, or in locations where rodents or their signs have been seen. Protect bait from rain and snow. Remove as much alternative food as possible.

**APPLICATION DIRECTIONS:**

**Rats:** Place 2 to 12 blocks per placement (usually at intervals of 15 to 30 feet). Adjust the amount of bait applied to the level of rat feeding expected at each bait placement.

For use in sewers, thread wire through block and securely attach to a stationary structure such as the bottom step of a manhole ladder or a sewer grate. Allow just enough wire for the block to rest on manhole benching. If benching is not present, suspend block a few inches above the high water mark or secure block on a board supported by opposing steps of the ladder. Securing block in this manner will prevent removal by rats or water. Use at least 15 blocks per manhole. Maintain an uninterrupted supply of fresh bait for at least 10 days or until signs of rat activity cease.

**Mice:** Use 1 bait block per placement. Space placements at intervals of 8 to 12 feet in infested areas. Larger placements, up to 2 blocks, may be needed at points of extremely high mouse activity.

**Baiting Strategy:** Highest bait consumption is expected to occur on the first day or two after treatment begins. After several days, inspect the placement and replenish bait at sites where there is evidence of heavy feeding or where there is continued evidence of rodent activity.

Normally, the volume of bait consumed will be significantly less with bromethalin baits than with anticoagulant baits. Although one night's feeding will usually provide a lethal dose, maintain bait for at least one week to provide all rodents a chance to feed on the bait. Continue baiting until all signs of feeding have ceased.

**FOLLOW-UP:** Replace contaminated or spoiled bait immediately. Using gloves, collect and properly dispose of all dead, exposed animals and leftover bait. To prevent reinfestation, limit sources of rodent food, water, and harborage as much as possible. If reinfestation does occur, repeat treatment. Where a continuous source of infestation is present, establish permanent bait stations and replenish as needed.

## PRECAUTIONARY STATEMENTS

### Hazards to Humans and Domestic Animals

**CAUTION:** Harmful if swallowed. Keep away from children, domestic animals and pets.

All handlers (including applicators) must wear shoes plus socks, and gloves. Any person who retrieves carcasses or unused bait following application of this product must wear gloves.

### User Safety Requirements

Follow manufacturer's instructions for cleaning/maintaining PPE. If no such instructions for washables, use detergent and hot water. Keep and wash PPE separately from other laundry. Remove PPE immediately after handling this product. Wash the outside of gloves before removing. As soon as possible, wash hands thoroughly after applying bait and before eating, drinking, chewing gum, using tobacco or using the toilet and change into clean clothing.

## ENVIRONMENTAL HAZARDS

This product is extremely toxic to mammals and birds. Dogs and other predatory and scavenging mammals and birds might be poisoned if they feed upon animals that have eaten this bait. Do not apply directly to water, or to areas where surface water is present or to intertidal areas below the mean high water mark. Runoff also may be hazardous to aquatic organisms in water adjacent to treated areas. Do not contaminate water when disposing of equipment wash water or rinsate.

## STORAGE AND DISPOSAL

Do not contaminate water, food or feed by storage or disposal.

**STORAGE:** Store only in original container in a cool, dry place inaccessible to children and pets. Keep containers closed and away from other chemicals.

**PESTICIDE DISPOSAL:** Wastes resulting from the use of this product may be placed in trash or delivered to an approved waste disposal facility.

**CONTAINER HANDLING:** Nonrefillable container. Do not reuse or refill this container. Offer for recycling, if available. Dispose of empty container by placing in trash, at an approved disposal facility or by incineration.

**WARRANTY:** To the extent consistent with applicable law, seller makes no warranty, expressed or implied, concerning the use of this product other than indicated on the label. Buyer assumes all risk of use and/or handling of this material when such use and/or handling is contrary to label instructions.

**OPTIONAL MARKETING STATEMENTS:**

With Bromethalin

Kills Anticoagulant Resistant Norway Rats, Roof Rats and House Mice

Rodents Usually Consume a Lethal Dose in a Single Night's Feeding

Norway Rats, Roof Rats, and House Mice Cease Feeding After Consuming a Toxic Dose

For Use in and Around Homes and Buildings

For Use in and Around Agricultural Buildings

Palatable Formulation

All-Weather Bait Chunx

Reliable, All-Weather Formula

Ready to use 0.53 oz. (15g) Bait Chunx

Multi-edge Shape Gives Rodents Gnawing Edges

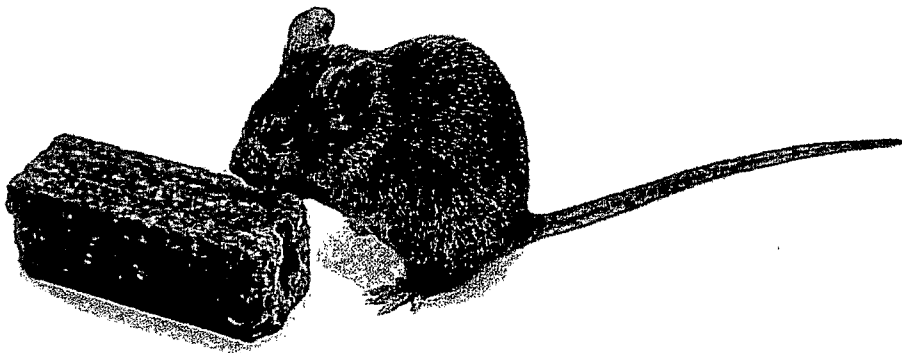
Can be Used Indoors or Out

Can be Used Alone or in Tomcat Bait Stations

Ideal for Use in Tomcat Bait Stations

Made in USA

**OPTIONAL GRAPHICS:**



**OPTIONAL GRAPHICS (Cont'd.):**

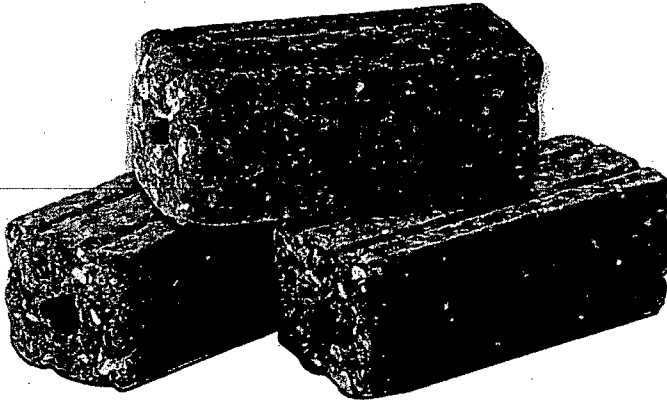


Photo is not representative of a label placement

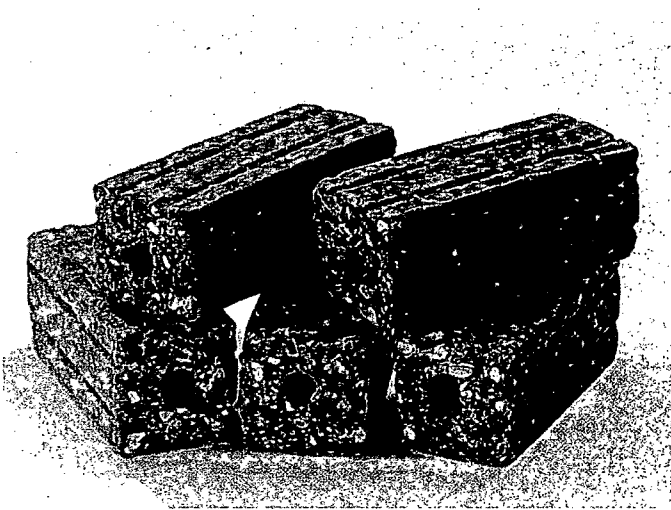


Photo is not representative of a label placement