

12455-95

09/26/2007

1/5

FASTRAC[®]**All-Weather Blox****Mold Resistant****Moisture Resistant****KILLS RATS AND MICE****KILLS ANTICOAGULANT RESISTANT NORWAY RATS, ROOF RATS
AND HOUSE MICE**

Norway rats, Roof rats and House Mice usually consume a lethal dose in a single night's feeding, but it may take two or more days from the time of bait consumption for these rodents to die. Rodents cease feeding after consuming a toxic dose. Fastrac All-Weather Blox kills anticoagulant resistant rats and mice.

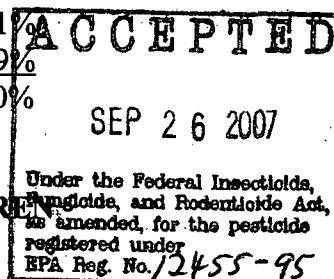
ACTIVE INGREDIENT:

Bromethalin (CAS #63333-35-7): 0.01%

INERT INGREDIENTS* 99.99%

TOTAL 100.00%

*Contains Denatonium Benzoate

**KEEP OUT OF REACH OF CHILDREN
CAUTION****FIRST AID****HAVE LABEL WITH YOU WHEN OBTAINING TREATMENT ADVICE****IF SWALLOWED:**

- Call a poison control center, doctor, or 1-877-854-2494 immediately for treatment advice.
- Have person sip a glass of water if able to swallow.
- Do not induce vomiting unless told to do so by the poison control center or doctor.

IF ON SKIN:

- Wash with plenty of soap and water.

NOTE TO PHYSICIAN OR VETERINARIAN

FASTRAC is not an anticoagulant rodenticide. If ingested, limit absorption by either emesis or gastric lavage. Sublethal symptoms, if present, would be the result of cerebral edema and should be treated accordingly through administration of an osmotic diuretic and corticosteroid.

See Back/Side Panel for First Aid and additional precautionary statements.

NET WEIGHT:

Range: 1.5 – 10 lb. (0.7 – 4.5 kg)

5.3 oz. (150 g) [10 x 0.53 oz. (15 g) bait blocks]

Manufactured by:



Bell Laboratories, Inc.
Madison, WI 53704

EPA REG. NO. 12455-95

EPA EST. NO. 12455-WI-1

This Section For Product Label Identification Purposes Only:
Fastrac All-Weather Blox, EPA Reg. No. 12455-95. Container Label
Page 1 of 5

DIRECTIONS FOR USE

It is a violation of Federal law to use this product in a manner inconsistent with its labeling.

READ THIS LABEL: Read this entire label and follow all use directions and use precautions. Use only for the sites, pests, and application methods described on this label.

IMPORTANT: Do not expose children, pets, or nontarget animals to rodenticides. To help prevent accidents:

1. Store unused product out of reach of children and pets.
2. Apply bait in locations out of reach of children, pets, domestic animals and nontarget wildlife, or in tamper-resistant bait stations. These stations must be resistant to destruction by dogs and by children under six years of age, and must be used in a manner that prevents such children from reaching into bait compartments and obtaining bait. If bait can be shaken from bait stations when they are lifted, units must be secured or otherwise immobilized. Stronger bait stations are needed in areas open to hooved livestock, raccoons, bears or other potentially destructive animals, or in areas prone to vandalism.
3. Dispose of product container and unused, spoiled or unconsumed bait as specified on this label.

USE RESTRICTIONS: For control of Norway rats, roof rats and house mice. When used in USDA-inspected facilities, this product must be applied in tamper-resistant bait stations. Do not broadcast bait. This product may be used in and around homes, agricultural, industrial, commercial, and public buildings. May also be used in transport vehicles (ships, trains, aircraft) and in and around related port or terminal buildings. May also be used in alleys.

SELECTION OF TREATMENT AREAS: Determine areas where rats or mice will most likely find and consume the bait. Generally, these areas are along walls, by gnawed openings, in or beside burrows, in corners and concealed places, between floors and walls, or in locations where rodents or their signs have been seen. Protect bait from rain and snow. Remove as much alternative food as possible.

APPLICATION DIRECTIONS:

(Qualifier statement for 10 x 0.53 oz. package: This package of 10 blocks contains enough bait (5.53 oz.) to kill five rats.)

Rats: Place 2 to 12 blocks per placement (usually at intervals of 15 to 30 feet). Adjust the amount of bait applied to the level of rat feeding expected at each bait placement.

For use in sewers, thread wire through block and securely attach to a stationary structure such as the bottom step of a manhole ladder or a sewer grate. Allow just enough wire for the block to rest on manhole benching. If benching is not present, suspend block a few inches above the high water mark or secure block on a board supported by opposing steps of the ladder. Securing block in this manner will prevent removal by rats or water. Use at least 15 blocks per manhole. Maintain an uninterrupted supply of fresh bait for at least 10 days or until signs of rat activity cease.

Mice: Use 1 bait block per placement. Space placements at intervals of 8 to 12 feet in infested areas. Larger placements, up to 2 blocks, may be needed at points of extremely high mouse activity.

Baiting Strategy: Highest bait consumption is expected to occur on the first day or two after treatment begins. After several days, inspect the placement and replenish bait at sites where there is evidence of heavy feeding or where there is continued evidence of rodent activity.

Normally, the volume of bait consumed will be significantly less with bromethalin baits than with anticoagulant baits. Although one night's feeding will usually provide a lethal dose, maintain bait for at least one week to provide all rodents a chance to feed on the bait. Continue baiting until all signs of feeding have ceased.

FOLLOW-UP: Replace contaminated or spoiled bait immediately. Using gloves, collect and dispose of all dead, exposed animals and leftover bait. To prevent reinfestation, limit sources of rodent food, water, and harborage as much as possible. If reinfestation does occur, repeat treatment. Where a continuous source of infestation is present, establish permanent bait stations and replenish as needed.

PRECAUTIONARY STATEMENTS

HAZARDS TO HUMANS AND DOMESTIC ANIMALS

CAUTION: Harmful if swallowed or absorbed through the skin. Keep away from children, domestic animals and pets. Do not get in eyes, on skin or on clothing. Wash thoroughly with soap and water after handling. Wear gloves if bait is handled.

ENVIRONMENTAL HAZARDS

This product is toxic to fish, birds and other wildlife. Do not apply this product directly to water or to areas where surface water is present or to intertidal areas below the mean high water mark.

STORAGE AND DISPOSAL

Do not contaminate water, food or feed by storage or disposal.

STORAGE: Store only in original container in a cool, dry place inaccessible to children and pets. Keep containers closed and away from other chemicals.

PESTICIDE DISPOSAL: Wastes resulting from the use of this product may be placed in trash or delivered to an approved waste disposal facility.

PESTICIDE CONTAINER: Do not reuse empty container. Dispose of empty container by placing in trash, at an approved waste disposal facility or by incineration or, if allowed by state and local authorities, by burning. If burned stay out of smoke. Call your Local Waste Agency for any questions on proper disposal.

4/5

Alternate Environmental Hazards Language for packaging intended solely for consumer use (<1 lb.)

ENVIRONMENTAL HAZARDS

This product is toxic to fish, birds and other wildlife. Do not apply directly to water.

Alternate Storage and Disposal Language for packaging intended solely for consumer use (<1 lb.)

STORAGE AND DISPOSAL

Do not contaminate water, food or feed by storage or disposal.

STORAGE: Store only in original container in a cool, dry place inaccessible to children and pets. Keep containers closed and away from other chemicals.

DISPOSAL: **If empty:** do not reuse this container. Place in trash or offer for recycling if available. **If partially filled:** Place in trash or call your local solid waste agency for disposal instructions. Never place unused product down any indoor or outdoor drain.

WARRANTY: To the extent consistent with applicable law, seller makes no warranty, expressed or implied, concerning the use of this product other than indicated on the label. Buyer assumes all risk of use and/or handling of this material when such use and/or handling is contrary to label instructions.

OPTIONAL MARKETING STATEMENTS:

With Bromethalin

Kills Anticoagulant Resistant Norway Rats, Roof Rats and House Mice

Rodents Cease Feeding After Consuming a Lethal Dose

For Use in and Around Homes and Buildings

Palatable Formulation

All-Weather Bait Chunx

Reliable, All-Weather Formula

Ready to use 0.53 oz. (15g) Bait Chunx

Multi-edge Shape Gives Rodents Gnawing Edges

Can be Used Indoors or Out

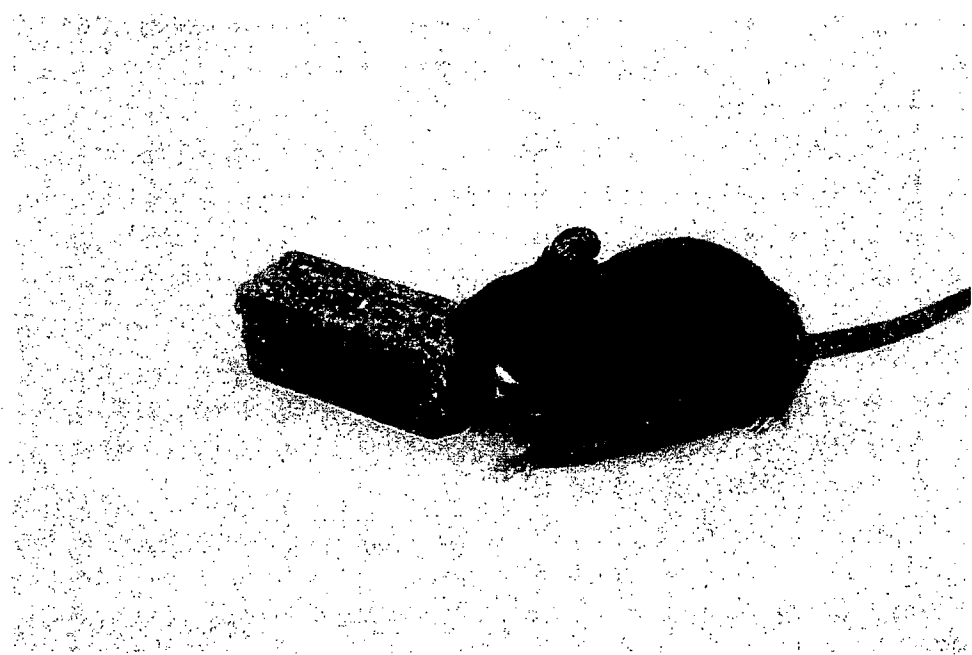
Can be Used Alone or in Tomcat Bait Stations

Ideal for Use in Tomcat Bait Stations

Made in USA

5/5

OPTIONAL GRAPHIC WITHOUT TEXT:



082907