

12455-81

4/13/2012

1/6



UNITED STATES ENVIRONMENTAL PROTECTION AGENCY
WASHINGTON, D.C. 20460

OFFICE OF CHEMICAL, SAFETY
AND POLLUTION PREVENTION

APR 13 2012

John Lublinkhof
Bell Laboratories, Inc.
3699 Kinsman Blvd.
Madison, WI 53704

Subject: Amendment to add new language permitting the use of the product within 100 feet of man-made structures
EPA Registration No.: 12455-81
Primary Brand Name: Ditrac Rodenticide
Submission Date: March 20, 2012

Dear Mr. Lublinkhof:

The label referred to above, submitted under FIFRA, as amended, is **acceptable**. Per 40 CFR 156.10(a)(6), submit one copy of your final printed labeling before you release the product for shipment. As defined in 40 CFR 152.3, "final printed labeling" means the "label or labeling of the product when distributed or sold." Clearly legible reproductions or photo reductions will be accepted for unusual labels. Note that a clean copy of the master label in most cases does not meet the definition of final printed labeling. If you have any questions, please contact Gene Benbow at (703) 347-0235 or via email at benbow.gene@epa.gov.

Sincerely,

A handwritten signature in black ink, appearing to read "John Hebert", with a large, sweeping flourish extending to the right.

John Hebert
Product Manager 07
Insecticide-Rodenticide Branch
Registration Division (7505P)

DITRAC[®]

RODENTICIDE

**This Product May Only be Used Inside and Within 100 Feet of Man-made Structures
and For All Burrow Baiting**

PELLETED BAIT

KILLS RATS AND MICE

KILLS NORWAY RATS, ROOF RATS, AND HOUSE MICE

ACTIVE INGREDIENT:

Diphacinone (CAS #82-66-6):..... 0.005%

INERT INGREDIENTS:..... $\frac{99.995\%}{100.000\%}$

ACCEPTED
APR 13 2012
Under the Federal Insecticide,
Fungicide, and Rodenticide Act,
as amended, for the pesticide
Registered under
EPA Reg. No. 12455-81

**KEEP OUT OF REACH OF CHILDREN
CAUTION**

See Back/Side Panel for First Aid and additional precautionary statements.

NET WEIGHT: 4-50 lb.

Manufactured by:



Bell Laboratories, Inc.
3699 Kinsman Blvd.
Madison, WI 53704

Batch Code:

EPA REG. NO. 12455-81

EPA EST. NO. 12455-WI-1

DIRECTIONS FOR USE

It is a violation of Federal law to use this product in a manner inconsistent with its labeling.

READ THIS LABEL: Read this entire label and follow all use directions and use precautions. Use only for the sites, pests, and application methods described on this label.

IMPORTANT: Do not expose children, pets, or nontarget animals to rodenticides. To help to prevent accidents:

1. Store unused product out of reach of children and pets.
2. Apply bait in locations out of reach of children, pets, domestic animals and nontarget wildlife, or in tamper-resistant bait stations. These stations must be resistant to destruction by dogs and by children under six years of age, and must be used in a manner that prevents such children from reaching into bait compartments and obtaining bait. If bait can be shaken from bait stations when they are lifted,

E-SUBMISSION

3. Dispose of product container and unused, spoiled, or unconsumed bait as specified on this label.

Note: Bait stations are mandatory for outdoor, above-ground use. Tamper-resistant bait stations must be used if children, pets, non-target mammals, or birds may access the bait.

RATS AND MICE

USE RESTRICTIONS: This product can only be used to control Norway rats, roof rats and house mice in and within 100 feet of man-made structures constructed in a manner so as to be vulnerable to commensal rodent invasions and/or to harboring or attracting rodent infestations. Examples of such structures include homes and other permanent or temporary residences, food processing facilities, industrial and commercial buildings, trash receptacles, agricultural and public buildings, transport vehicles (ships, trains, aircraft), docks and port of terminal buildings and related structures around and associated with these sites. Fence and perimeter baiting, beyond 100 feet from a structure as defined above, is prohibited. This product must not be applied directly to food or feed crops.

This product may be applied to active rodent burrows to control Norway rats, and roof rats within or beyond 100 feet of buildings and man-made structures, provided that infestations of these rodents have been confirmed. Bait must be placed no less than 6 inches into active Norway/roof rat burrows. Do not broadcast bait. Because Norway/roof rat infestations may occur in areas farther than 100 feet from buildings and man-made structures when the rodents have ample supplies of food and cover, efforts should be made to remove food trash, garbage, clutter and debris.

Do not place near or inside ventilation duct openings. Do not contaminate water, food, feedstuffs, food or feed handling equipment, or milk or meat handling equipment or surfaces that come into direct contact with food. When used in USDA inspected facilities, this product must be applied in tamper-resistant bait stations.

Do not sell this product in individual containers holding less than 4 pounds of bait.

SELECTION OF TREATMENT AREAS: Determine areas where rats or mice will most likely find and consume the bait. Generally, these areas are along walls, by gnawed openings, in or beside burrows, in corners and concealed places, between floors and walls, or in locations where rodents or their signs have been seen. Protect bait from rain and snow. Remove as much alternative food as possible.

APPLICATION DIRECTIONS:

RATS: Apply 4 to 16 oz. of bait (usually at intervals of 15 to 30 feet) per placement in infested areas. Maintain an uninterrupted supply of fresh bait for at least 10 days or until signs of rat activity cease.

MICE: Apply 1/4 to 1/2 oz. (1 to 2 level tablespoons) of bait at 8 to 12 foot intervals in infested areas. Larger placements (up to 2 oz.) may be needed at points of very high mouse activity. Maintain an uninterrupted supply of fresh bait for at least 15 days or until signs of mouse activity cease.

FOLLOW-UP: Replace contaminated or spoiled bait immediately. Using waterproof gloves, collect and dispose of all dead, exposed animals and leftover bait. To prevent reinfestation, limit sources of rodent food, water, and harborage as much as possible. If reinfestation does occur, repeat treatment. Where a continuous source of infestation is present, establish permanent bait stations and replenish as needed.

PRECAUTIONARY STATEMENTS

Hazards to Humans and Domestic Animals

CAUTION: Harmful if swallowed. Keep away from children, domestic animals and pets.

All handlers (including applicators) must wear: shoes plus socks, and gloves. Any person who retrieves carcasses or unused bait following application of this product must wear waterproof gloves.

User Safety Requirements

Follow manufacturer's instruction for cleaning/maintaining PPE. If no such instructions for washables, use detergent and hot water. Keep and wash PPE separately from other laundry. Remove PPE immediately after handling this product. Wash the outside of gloves before removing. As soon as possible, wash hands thoroughly after applying bait and before eating, drinking, chewing gum, using tobacco or using the toilet and change into clean clothing.

FIRST AID

HAVE LABEL WITH YOU WHEN OBTAINING TREATMENT ADVICE

If Swallowed

- Call a poison control center, doctor, or 1-877-854-2494 immediately for treatment advice.
- Have a person sip a glass of water if able to swallow.
- Do not induce vomiting unless told to do so by the poison control center or doctor.

NOTE TO PHYSICIAN

If swallowed, this material may reduce the clotting ability of the blood and cause bleeding. If ingested, administer Vitamin K₁ intramuscularly or orally. Repeat as necessary based on monitoring of prothrombin times.

TREATMENT FOR PET POISONING

If animal eats bait, call veterinarian or 1-877-854-2494 at once.

NOTE TO VETERINARIAN

Anticoagulant Diphacinone: For animals ingesting bait and/or showing poisoning signs (bleeding or elevated prothrombin times), give Vitamin K₁.

ENVIRONMENTAL HAZARDS

This product is extremely toxic to mammals and birds and other wildlife. Dogs, cats and other predatory and scavenging mammals and birds might be poisoned if they feed upon animals that have eaten this bait. Do not apply directly to water or to areas where surface water is present or to intertidal areas below the mean high water mark. Do not contaminate water when disposing of equipment wash water or rinsate.

STORAGE AND DISPOSAL

Do not contaminate water, food or feed by storage or disposal.

Pesticide Storage: Store only in original container in a cool, dry place inaccessible to children and pets. Keep containers closed and away from other chemicals.

Pesticide Disposal: Dispose of wastes resulting from the use of this product in trash or at an approved waste disposal facility.

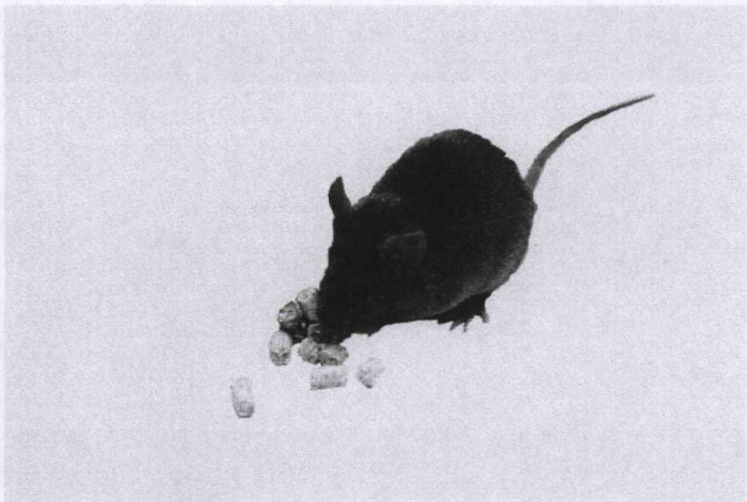
Container Handling: Nonrefillable container. Do not reuse or refill this container. **[Plastic:]** Offer for recycling or reconditioning; or puncture and dispose of in a sanitary landfill; or by incineration. In most states, burning is not allowed. **[Paper:]** Dispose of empty container by placing in trash, at an approved waste disposal facility or by incineration. In most states, burning is not allowed.

WARRANTY: To the extent consistent with applicable law, seller makes no warranty, expressed or implied, concerning the use of this product other than indicated on the label. Buyer assumes all risk of use and/or handling of this material when such use and/or handling is contrary to label instructions

OPTIONAL MARKETING STATEMENTS:

- With Diphacinone
- For Use in and Around Homes and Buildings
- For Use in and Around Agricultural Buildings
- Palatable Formulation
- Pelleted Bait
- Pellets
- Pelleted formula
- Pelleted formulation
- Bulk pellets
- Our most economical bait (rodenticide)

OPTIONAL GRAPHICS WITHOUT TEXT:



OPTIONAL GRAPHICS WITHOUT TEXT (Cont'd):



032012