

12455-81

09/26/2007

1/4

DITRAC[®]

RODENTICIDE

KILLS RATS AND MICE

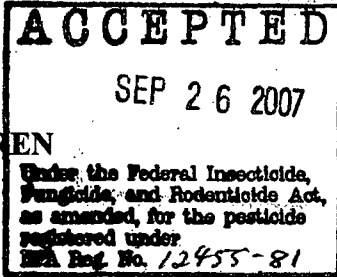
KILLS NORWAY RATS, ROOF RATS AND HOUSE MICE

ACTIVE INGREDIENT:

Diphacinone (CAS #82-66-6):..... 0.005%

INERT INGREDIENTS:..... 99.995%

100.000%



KEEP OUT OF REACH OF CHILDREN

CAUTION

FIRST AID

HAVE LABEL WITH YOU WHEN OBTAINING TREATMENT ADVICE

IF SWALLOWED:

- Call a poison control center, doctor, or 1-877-854-2494 immediately for treatment advice.
- Have person sip a glass of water if able to swallow.
- Do not induce vomiting unless told to do so by the poison control center or doctor.

IF ON SKIN:

- Wash with plenty of soap and water.

NOTE TO PHYSICIAN OR VETERINARIAN

If swallowed, this material may reduce the clotting ability of the blood and cause bleeding. If ingested, administer Vitamin K₁ intramuscularly or orally as indicated in bishydroxycoumarin overdoses. Repeat as necessary based on monitoring of prothrombin times.

See Back/Side Panel for First Aid and additional precautionary statements.

NET WEIGHT: 10 - 25 lb. (4.5 - 11.4 kg)

1 lb (454 g)

Manufactured by:



Bell Laboratories, Inc.
Madison, WI 53704

EPA REG. NO. 12455-81

EPA EST. NO. 12455-WI-1

DIRECTIONS FOR USE

It is a violation of Federal law to use this product in a manner inconsistent with its labeling.

READ THIS LABEL: Read this entire label and follow all use directions and use precautions. Use only for the sites, pests, and application methods described on this label.

IMPORTANT: Do not expose children, pets, or nontarget animals to rodenticides. To help to prevent accidents:

1. Store unused product out of reach of children and pets.
2. Apply bait in locations out of reach of children, pets, domestic animals and nontarget wildlife, or in tamper-resistant bait stations. These stations must be resistant to destruction by dogs and by children under six years of age, and must be used in a manner that prevents such children from reaching into bait compartments and obtaining bait. If bait can be shaken from bait stations when they are lifted, units must be secured or otherwise immobilized. Stronger bait stations are needed in areas open to hooved livestock, raccoons, bears, or other potentially destructive animals, or in areas prone to vandalism.
3. Dispose of product container and unused, spoiled, or unconsumed bait as specified on this label.

USE RESTRICTIONS: For control of Norway rats, roof rats and house mice in and around homes, industrial and agricultural buildings, and similar man-made structures. Do not place bait in areas where there is a possibility of contaminating food or surfaces that come in direct contact with food. When used in USDA-inspected facilities, this product must be applied in tamper-resistant bait stations. Do not broadcast bait.

SELECTION OF TREATMENT AREAS: Determine areas where rats or mice will most likely find and consume the bait. Generally, these areas are along walls, by gnawed openings, in or beside burrows, in corners and concealed places, between floors and walls, or in locations where rodents or their signs have been seen. Protect bait from rain and snow. Remove as much alternative food as possible.

APPLICATION DIRECTIONS:

RATS: Apply 4 to 16 oz. of bait (usually at intervals of 15 to 30 feet) per placement. Maintain an uninterrupted supply of fresh bait for at least 10 days.

MICE: Apply 1/4 to 1/2 oz. (1 to 2 level tablespoons) of bait at 8 to 12 foot intervals. Larger placements (up to 2 oz.) may be needed at points of very high mouse activity. Maintain an uninterrupted supply of fresh bait for at least 15 days.

FOLLOW-UP: Replace contaminated or spoiled bait immediately. Using gloves, collect and dispose of all dead, exposed animals and leftover bait. To prevent reinfestation, limit sources of rodent food, water, and harborage as much as possible. If reinfestation does occur, repeat treatment. Where a continuous source of infestation is present, establish permanent bait stations and replenish as needed.

**PRECAUTIONARY STATEMENTS
HAZARDS TO HUMANS AND DOMESTIC ANIMALS**

CAUTION: Harmful if swallowed or absorbed through the skin. Keep away from children, domestic animals and pets. Do not get in eyes, on skin or on clothing. Wash thoroughly with soap and water after handling. Wear gloves if bait is handled.

ENVIRONMENTAL HAZARDS

This product is toxic to fish, birds and other wildlife. Predatory and scavenging mammals and birds might be poisoned if they feed upon animals that have eaten bait. Do not apply this product directly to water or to areas where surface water is present or to intertidal areas below the mean high water mark.

STORAGE AND DISPOSAL

Do not contaminate water, food or feed by storage or disposal.

STORAGE: Store only in original container in a cool, dry place inaccessible to children and pets. Keep containers closed and away from other chemicals.

PESTICIDE DISPOSAL: Wastes resulting from the use of this product may be placed in trash or delivered to an approved waste disposal facility.

PESTICIDE CONTAINER: Do not reuse empty container. Dispose of empty container by placing in trash, at an approved waste disposal facility or by incineration or, if allowed by state and local authorities, by burning. If burned stay out of smoke. Call your Local Waste Agency for any questions on proper disposal.

WARRANTY: To the extent consistent with applicable law, seller makes no warranty, expressed or implied, concerning the use of this product other than indicated on the label. Buyer assumes all risk of use and/or handling of this material when such use and/or handling is contrary to label instructions

Alternate Environmental Hazards Language for packaging intended solely for consumer use (< 1 lb.)

ENVIRONMENTAL HAZARDS

This product is toxic to fish, birds and other wildlife. Predatory and scavenging mammals and birds might be poisoned if they feed upon animals that have eaten bait. Do not apply directly to water.

Alternate Storage and Disposal Language for packaging soley for consumer use (< 1 lb.)

STORAGE AND DISPOSAL

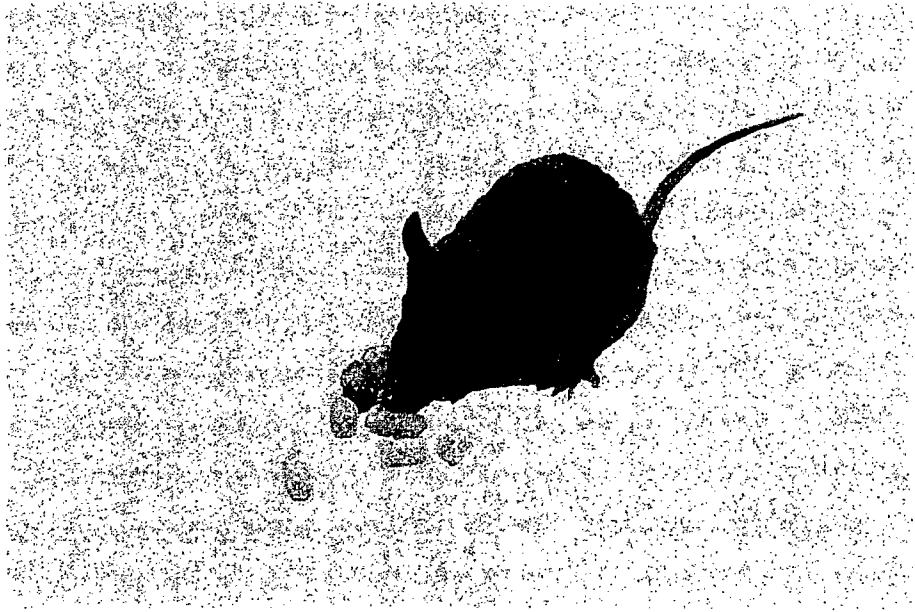
STORAGE: Store only in original container in a cool, dry place inaccessible to children and pets. Keep containers closed and away from other chemicals.

DISPOSAL: **If empty:** do not reuse this container. Place in trash or offer for recycling if available. **If partially filled:** Place in trash or call your local solid waste agency for disposal instructions. Never place unused product down any indoor or outdoor drain.

OPTIONAL MARKETING STATEMENTS:

With Diphacinone
For Use in and Around Homes and Buildings
Palatable Formulation

OPTIONAL GRAPHICS WITHOUT TEXT:



082907