

12455-79

4/18/2011

10 of 18

UNITED STATES ENVIRONMENTAL PROTECTION AGENCY
WASHINGTON, D.C. 20460



OFFICE OF CHEMICAL SAFETY
AND POLLUTION PREVENTION

Decision # 446456
300 S - 894135
1155

APR 18 2011

Bell Laboratories
3699 Kinsman Blvd.
Madison, WI 53704

Attention: Mr. John Lublinkhof

Subject Contrac® All-Weather Blox
 EPA Reg. No. 12455-79
 Amended Application of January 14, 2011

Purpose This submission revises the "USE RESTRICTIONS" for this product, under sec 3 of the Federal Insecticide, Fungicide, and Rodenticide Act (FIFRA) to allow use around agricultural buildings.

Labeling The labeling submitted with the above letter, under the Federal Insecticide, Fungicide, and Rodenticide Act (FIFRA) is acceptable, provided you submit one (1) copy of final printed labeling to us, before you ship your product.

Follow the enclosed "Minimum Type Size Requirements for Final Printed Label".

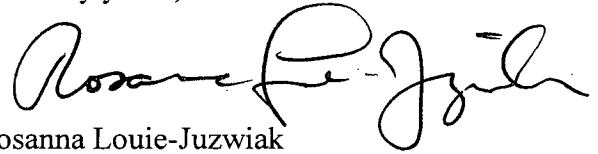
Existing stocks Stocks of product with existing labels may be used for eighteen (18) months.

Consequence for non-compliance If these conditions are not complied with, the registration will be subject to cancellation in accordance with FIFRA section 6(e). Your release for shipment of the product constitutes acceptance of these conditions.

Questions

If you have questions about this letter, please contact Dan Peacock at 703-305-5407 (by phone) or peacock.dan@epa.gov (by E-Mail).

Sincerely yours,



Rosanna Louie-Juzwiak
Product Manager (07)
Insecticide-Rodenticide Branch
Registration Division (7505P)

Enclosures

1. Stamped Label
2. Minimum Type Size Requirements for Final Printed Labels

**Letter
Location**

Dan Peacock, C:\Documents and Settings\dpeacock\Desktop\Backup, 16gb Flash Drive\Bromadiolone\Registration Actions\12455-79\12455-79, amend, revise use directions, 4-13-2011.doc

30e18

012455-00079.20110418

Pest Control Operator Use Label

OUTER CONTAINER - COMPLETE LABEL - PACKAGE WEIGHT 16 LB. OR GREATER

CONTRAC[®] ACCEPTED APR 18 2011

All-Weather Blox
Under the Federal Insecticide, Fungicide,
and Rodenticide Act, as amended, for the
KILLS RATS AND MICE pesticide registered under:

KILLS WARFARIN RESISTANT NORWAY RATS 12455-79
EPA Reg. No. 12455-79

Norway rats, roof rats, and house mice may consume a lethal dose in one night's feeding with first dead rodents appearing four or five days after feeding begins.

ACTIVE INGREDIENT:

Bromadiolone (CAS #28772-56-7):	0.005%
OTHER INGREDIENTS*:	99.995%
		100.000%

*Contains Denatonium Benzoate

**KEEP OUT OF REACH OF CHILDREN
CAUTION**

FIRST AID

HAVE LABEL WITH YOU WHEN OBTAINING TREATMENT ADVICE

IF SWALLOWED:

- Call a poison control center, doctor, or 1-877-854-2494, or 1-800-858-7378* immediately for treatment advice.
- Have person sip a glass of water if able to swallow.
- Do not induce vomiting unless told to do so by the poison control center or doctor.

IF ON SKIN OR CLOTHING:

- Take off contaminated clothing. Rinse skin immediately with plenty of water for 15-20 minutes. Call a poison control center or doctor for treatment advice.

IF IN EYES:

- Hold eye open and rinse slowly and gently with water for 15-20 minutes.
- Remove contact lenses, if present, after the first 5 minutes, then continue rinsing eye.
- Call a poison control center, doctor, or 1-877-854-2494 immediately for treatment advice.

* Also call this number for information on health concerns and pesticide incidents.

NOTE TO PHYSICIAN

If swallowed or absorbed through the skin, this material may reduce the clotting ability of the blood and cause bleeding. If ingested, administer Vitamin K₁ intramuscularly or orally. Repeat as necessary based on monitoring of prothrombin times.

40918

Pest Control Operator Use Label

TREATMENT FOR PET POISONING

If animal eats bait, call veterinarian at once.

NOTE TO VETERINARIAN

Anticoagulant Bromadiolone: For animals ingesting bait and/or showing poisoning signs (bleeding or elevated prothrombin times), give Vitamin K₁. If needed, check prothrombin times every 3 days until values return to normal (up to 30 days). In severe cases, blood transfusions may be needed.

See Back/Side Panel for First Aid and additional precautionary statements.

NET WEIGHT:

16 lb. – 50 lb. containers

BATCH CODE:

Manufactured by:



Bell Laboratories, Inc.
3699 Kinsman Blvd.
Madison, WI 53704

EPA REG. NO. 12455- 79

EPA EST. NO. 12455-WI-1

DIRECTIONS FOR USE

It is a violation of Federal law to use this product in a manner inconsistent with its labeling.

READ THIS LABEL: Read this entire label and follow all use directions and use precautions. Use only for sites, pests, and application methods described on this label.

IMPORTANT: Do not expose children, pets, or nontarget animals to rodenticides. To help to prevent exposure:

1. Store unused product out of reach of children and pets.
2. Apply bait in locations out of reach of children, pets, domestic animals and nontarget wildlife, or in tamper-resistant bait stations. These stations must be resistant to destruction by dogs and by children under six years of age, and must be used in a manner that prevents such children from reaching into bait compartments and obtaining bait. If bait can be shaken from bait stations when they are lifted, units must be secured or otherwise immobilized. Stronger bait stations are needed in areas open to hooved livestock, raccoons, bears, or other potentially destructive animals, or in areas prone to vandalism.
3. Dispose of product container and unused, spoiled, or unconsumed bait as specified on this label.

Note: Bait stations are mandatory for outdoor, above-ground use. Tamper-resistant bait stations must be used if children, pets, non-target mammals, or birds may access the bait.

USE RESTRICTIONS: This product may only be used to control Norway rats, roof rats, and house mice in and around homes and residential buildings, food processing facilities, industrial, commercial, agricultural and public buildings, and similar man-made structures. It may also be used in transport vehicles (ships, trains, aircraft) and in and around related port or terminal buildings. **Do not apply further than 50 feet from buildings.** Do not place near or inside ventilation duct openings. Do not contaminate water, food, feedstuffs, food or feed handling equipment, or milk or meat handling

Pest Control Operator Use Label

equipment or surfaces that come into direct contact with food or feed. When used in USDA inspected facilities, this product must be applied in tamper-resistant bait stations. Do not broadcast bait. Do not use this product in sewers.

Do not sell this product in individual containers holding less than 16 pounds of bait.

SELECTION OF TREATMENT AREAS: Determine areas where rats or mice will most likely find and consume the bait. Generally, these areas are along walls, by gnawed openings, in or beside burrows, in corners and concealed places, between floors and walls, or in locations where rats and mice or their signs have been seen. Protect bait from rain and snow. Remove as much alternative food as possible.

APPLICATION DIRECTIONS:

RATS: Place 3 to 16 bait blocks (at intervals of 15 to 30 feet) per placement in infested areas. Maintain an uninterrupted supply of fresh bait for at least 10 days or until signs of rat activity cease.

HOUSE MICE: Place 1 block per placement. Space placements at 8 to 12 foot intervals in infested areas. Two blocks may be needed at points of very high mouse activity. Maintain an uninterrupted supply of fresh bait for at least 15 days or until signs of mouse activity cease.

FOLLOW-UP: Replace contaminated or spoiled bait immediately. Wearing gloves, collect and dispose of all dead, exposed animals and leftover bait. To prevent reinfestation, limit sources of rodent food, water, and harborage as much as possible. If reinfestation does occur, repeat treatment. Where a continuous source of infestation is present, establish permanent bait stations and replenish as needed.

PRECAUTIONARY STATEMENTS

HAZARDS TO HUMANS AND DOMESTIC ANIMALS

CAUTION: Harmful if swallowed or absorbed through the skin. Keep away from children, domestic animals and pets. Do not get in eyes, on skin or on clothing.

All handlers (including applicators) must wear: shoes plus socks, and waterproof gloves. Any person who retrieves carcasses or unused bait following application of this product must wear gloves.

User Safety Requirements

Follow manufacturer's instruction for cleaning/maintaining PPE. If no such instructions for washables, use detergent and hot water. Keep and wash PPE separately from other laundry. Remove PPE immediately after handling this product. Wash the outside of gloves before removing. As soon as possible, wash hands thoroughly after applying bait and before eating, drinking, chewing gum, using tobacco or using the toilet and change into clean clothing.

ENVIRONMENTAL HAZARDS

This product is extremely toxic to fish, birds and other wildlife. Dogs and predatory and scavenging mammals and birds might be poisoned-if they feed upon animals that have eaten this bait. Do not apply this product directly to water or to areas where surface water is present or to intertidal areas below the mean high water mark. Runoff also may be hazardous to aquatic organisms in water adjacent to treated areas. Do not contaminate water when disposing of equipment wash water or rinsate.

Pest Control Operator Use Label

STORAGE AND DISPOSAL

Do not contaminate water, food or feed by storage or disposal.

Pesticide Storage: Store only in original container in a cool, dry place inaccessible to children and pets. Keep containers closed and away from other chemicals.

Pesticide Disposal: Wastes resulting from the use of this product may be placed in trash or delivered to an approved waste disposal facility.

Container Handling: Nonrefillable container. Do not reuse or refill this container. **[Plastic:]** Triple rinse (or equivalent), then offer for recycling or reconditioning; or puncture and dispose of in a sanitary landfill; or by incineration. In most states, burning is not allowed. **[Paper:]** Dispose of empty container by placing in trash, at an approved waste disposal facility or by incineration. In most states, burning is not allowed.

WARRANTY: To the extent consistent with applicable law, seller makes no warranty, expressed or implied, concerning the use of this product other than indicated on the label. Buyer assumes all risk of use and/or handling of this material when such use and/or handling is contrary to label instructions.

INNER CONTAINER - COMPLETE LABEL - PACKAGE WEIGHT 2 LB. TO 10 LB.

CONTRAC[®]
All-Weather Blox

KILLS RATS AND MICE

KILLS WARFARIN RESISTANT NORWAY RATS

Norway rats, roof rats, and house mice may consume a lethal dose in one night's feeding with first dead rodents appearing four or five days after feeding begins.

ACTIVE INGREDIENT:

Bromadiolone (CAS #28772-56-7):0.005%
OTHER INGREDIENTS*: 99.995%
100.000%

*Contains Denatonium Benzoate

KEEP OUT OF REACH OF CHILDREN
CAUTION

7 of 18

Pest Control Operator Use Label

FIRST AID

HAVE LABEL WITH YOU WHEN OBTAINING TREATMENT ADVICE

IF SWALLOWED:

- Call a poison control center, doctor, or 1-877-854-2494, or 1-800-858-7378* immediately for treatment advice.
- Have person sip a glass of water if able to swallow.
- Do not induce vomiting unless told to do so by the poison control center or doctor.

IF ON SKIN OR CLOTHING:

- Take off contaminated clothing. Rinse skin immediately with plenty of water for 15-20 minutes. Call a poison control center or doctor for treatment advice.

IN EYES:

- Hold eye open and rinse slowly and gently with water for 15-20 minutes.
- Remove contact lenses, if present, after the first 5 minutes, then continue rinsing eye.
- Call a poison control center, doctor, or 1-877-854-2494 immediately for treatment advice.

* Also call this number for information on health concerns and pesticide incidents.

NOTE TO PHYSICIAN

If swallowed or absorbed through the skin, this material may reduce the clotting ability of the blood and cause bleeding. If ingested, administer Vitamin K₁ intramuscularly or orally. Repeat as necessary based on monitoring of prothrombin times.

TREATMENT FOR PET POISONING

If animal eats bait, call veterinarian at once.

NOTE TO VETERINARIAN

Anticoagulant Bromadiolone: For animals ingesting bait and/or showing poisoning signs (bleeding or elevated prothrombin times), give Vitamin K₁. If needed, check prothrombin times every 3 days until values return to normal (up to 30 days). In severe cases, blood transfusions may be needed.

See Back/Side Panel for First Aid and additional precautionary statements.

NET WEIGHT: 2 lb. to 10 lb. containers

INDIVIDUAL SALE IS PROHIBITED BY LAW

Manufactured by:



Bell Laboratories, Inc.
3699 Kinsman Blvd.
Madison, WI 53704

BATCH CODE:

EPA REG. NO. 12455- 79

EPA EST. NO. 12455-WI-1

80418

Pest Control Operator Use Label

DIRECTIONS FOR USE

It is a violation of Federal law to use this product in a manner inconsistent with its labeling.

READ THIS LABEL: Read this entire label and follow all use directions and use precautions. Use only for sites, pests, and application methods described on this label.

IMPORTANT: Do not expose children, pets, or nontarget animals to rodenticides. To help to prevent exposure:

1. Store unused product out of reach of children and pets.
2. Apply bait in locations out of reach of children, pets, domestic animals and nontarget wildlife, or in tamper-resistant bait stations. These stations must be resistant to destruction by dogs and by children under six years of age, and must be used in a manner that prevents such children from reaching into bait compartments and obtaining bait. If bait can be shaken from bait stations when they are lifted, units must be secured or otherwise immobilized. Stronger bait stations are needed in areas open to hooved livestock, raccoons, bears, or other potentially destructive animals, or in areas prone to vandalism.
3. Dispose of product container and unused, spoiled, or unconsumed bait as specified on this label.

Note: Bait stations are mandatory for outdoor, above-ground use. Tamper-resistant bait stations must be used if children, pets, non-target mammals, or birds may access the bait.

USE RESTRICTIONS: This product may only be used to control Norway rats, roof rats, and house mice in and around homes and residential buildings, food processing facilities, industrial, commercial, agricultural and public buildings, and similar man-made structures. It may also be used in transport vehicles (ships, trains, aircraft) and in and around related port or terminal buildings. **Do not apply further than 50 feet from buildings.** Do not place near or inside ventilation duct openings. Do not contaminate water, food, feedstuffs, food or feed handling equipment, or milk or meat handling equipment or surfaces that come into direct contact with food or feed. When used in USDA inspected facilities, this product must be applied in tamper-resistant bait stations. Do not broadcast bait. Do not use this product in sewers.

Do not sell this product in individual containers holding less than 16 pounds of bait

SELECTION OF TREATMENT AREAS: Determine areas where rats or mice will most likely find and consume the bait. Generally, these areas are along walls, by gnawed openings, in or beside burrows, in corners and concealed places, between floors and walls, or in locations where rats and mice or their signs have been seen. Protect bait from rain and snow. Remove as much alternative food as possible.

APPLICATION DIRECTIONS:

RATS: Place 3 to 16 bait blocks (at intervals of 15 to 30 feet) per placement in infested areas. Maintain an uninterrupted supply of fresh bait for at least 10 days or until signs of rat activity cease.

HOUSE MICE: Place 1 block per placement. - Space placements at 8 to 12 foot intervals in infested areas. Two blocks may be needed at points of very high mouse activity. Maintain an uninterrupted supply of fresh bait for at least 15 days or until signs of mouse activity cease.

Pest Control Operator Use Label

FOLLOW-UP: Replace contaminated or spoiled bait immediately. Wearing gloves, collect and dispose of all dead, exposed animals and leftover bait. To prevent reinfestation, limit sources of rodent food, water, and harborage as much as possible. If reinfestation does occur, repeat treatment. Where a continuous source of infestation is present, establish permanent bait stations and replenish as needed.

PRECAUTIONARY STATEMENTS

HAZARDS TO HUMANS AND DOMESTIC ANIMALS

CAUTION: Harmful if swallowed or absorbed through the skin. Keep away from children, domestic animals and pets. Do not get in eyes, on skin or on clothing.

All handlers (including applicators) must wear: shoes plus socks, and waterproof gloves. Any person who retrieves carcasses or unused bait following application of this product must wear gloves.

User Safety Requirements

Follow manufacturer's instruction for cleaning/maintaining PPE. If no such instructions for washables, use detergent and hot water. Keep and wash PPE separately from other laundry. Remove PPE immediately after handling this product. Wash the outside of gloves before removing. As soon as possible, wash hands thoroughly after applying bait and before eating, drinking, chewing gum, using tobacco or using the toilet and change into clean clothing.

ENVIRONMENTAL HAZARDS

This product is extremely toxic to fish, birds and other wildlife. Dogs and predatory and scavenging mammals and birds might be poisoned if they feed upon animals that have eaten this bait. Do not apply this product directly to water or to areas where surface water is present or to intertidal areas below the mean high water mark. Runoff also may be hazardous to aquatic organisms in water adjacent to treated areas. Do not contaminate water when disposing of equipment wash water or rinsate.

STORAGE AND DISPOSAL

Do not contaminate water, food or feed by storage or disposal.

Pesticide Storage: Store only in original container in a cool, dry place inaccessible to children and pets. Keep containers closed and away from other chemicals.

Pesticide Disposal: Wastes resulting from the use of this product may be placed in trash or delivered to an approved waste disposal facility.

Container Handling: Nonrefillable container. Do not reuse or refill this container. **[Plastic:]** Triple rinse (or equivalent), then offer for recycling or reconditioning; or puncture and dispose of in a sanitary landfill; or by incineration. In most states, burning is not allowed. **[Paper:]** Dispose of empty container by placing in trash, at an approved waste disposal facility or by incineration. In most states, burning is not allowed.

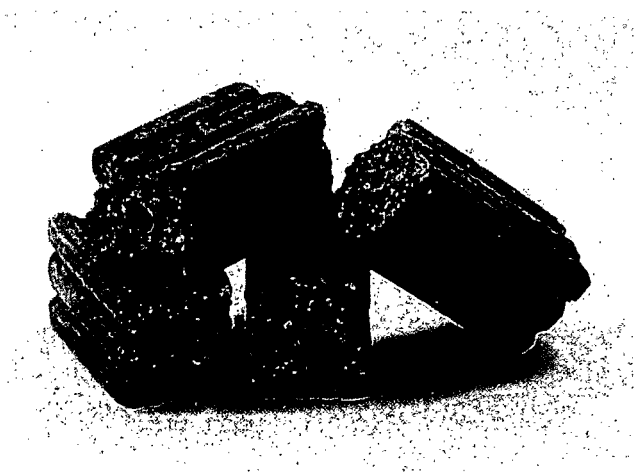
WARRANTY: To the extent consistent with applicable law, seller makes no warranty, expressed or implied, concerning the use of this product other than indicated on the label. Buyer assumes all risk of use and/or handling of this material when such use and/or handling is contrary to label instructions.

Pest Control Operator Use Label

OPTIONAL MARKETING STATEMENTS:

All-Weather Block Bait
Ready to Use 1 oz. Block Bait
All-weather formula
With bromadiolone
Multi-edge shape gives rats and mice gnawing edges
Can be used indoors or out
For use in and around homes and buildings.
Made in USA
Blox
All-Weather
All-Weather Blox

OPTIONAL GRAPHIC WITHOUT TEXT:



AGRICULTURAL USE LABEL

OUTER CONTAINER - COMPLETE LABEL - PACKAGE WEIGHT 8 LB. OR GREATER

CONTRAC®
All-Weather Blox

For Use In and Around Agricultural Buildings Only

KILLS RATS AND MICE

KILLS WARFARIN RESISTANT NORWAY RATS

Norway rats, roof rats, and house mice may consume a lethal dose in one night's feeding with first dead rodents appearing four or five days after feeding begins.

ACTIVE INGREDIENT:

Bromadiolone (CAS #28772-56-7):0.005%

OTHER INGREDIENTS*:..... 99.995%
100.000%

*Contains Denatonium Benzoate

KEEP OUT OF REACH OF CHILDREN

CAUTION

FIRST AID

HAVE LABEL WITH YOU WHEN OBTAINING TREATMENT ADVICE

IF SWALLOWED:

- Call a poison control center, doctor, or 1-877-854-2494, or 1-800-858-7378* immediately for treatment advice.
- Have person sip a glass of water if able to swallow.
- Do not induce vomiting unless told to do so by the poison control center or doctor.

IF ON SKIN OR CLOTHING:

- Take off contaminated clothing. Rinse skin immediately with plenty of water for 15-20 minutes. Call a poison control center or doctor for treatment advice.

IF IN EYES:

- Hold eye open and rinse slowly and gently with water for 15-20 minutes.
- Remove contact lenses, if present, after the first 5 minutes, then continue rinsing eye.
- Call a poison control center, doctor, or 1-877-854-2494 immediately for treatment advice

* Also call this number for information on health concerns and pesticide incidents.

NOTE TO PHYSICIAN

If swallowed or absorbed through the skin, this material may reduce the clotting ability of the blood and cause bleeding. If ingested, administer Vitamin K₁ intramuscularly or orally. Repeat as necessary based on monitoring of prothrombin times.

120118

AGRICULTURAL USE LABEL

TREATMENT FOR PET POISONING

If animal eats bait, call veterinarian at once.

NOTE TO VETERINARIAN

Anticoagulant Bromadiolone: For animals ingesting bait and/or showing poisoning signs (bleeding or elevated prothrombin times), give Vitamin K₁. If needed, check prothrombin times every 3 days until values return to normal (up to 30 days). In severe cases, blood transfusions may be needed.

See Back/Side Panel for First Aid and additional precautionary statements.

NET WEIGHT:

8 lb. – 50 lb.

Manufactured by:

BATCH CODE:



Bell Laboratories, Inc.
3699 Kinsman Blvd.
Madison, WI 53704

EPA REG. NO. 12455-79

EPA EST. NO. 12455-WI-1

DIRECTIONS FOR USE

It is a violation of Federal law to use this product in a manner inconsistent with its labeling.

READ THIS LABEL: Read this entire label and follow all use directions and use precautions. Use only for sites, pests, and application methods described on this label.

IMPORTANT: Do not expose children, pets, or nontarget animals to rodenticides. To help to prevent exposure:

1. Store unused product out of reach of children and pets.
2. Apply bait in locations out of reach of children, pets, domestic animals and nontarget wildlife, or in tamper-resistant bait stations. These stations must be resistant to destruction by dogs and by children under six years of age, and must be used in a manner that prevents such children from reaching into bait compartments and obtaining bait. If bait can be shaken from bait stations when they are lifted, units must be secured or otherwise immobilized. Stronger bait stations are needed in areas open to hoofed livestock, raccoons, bears, or other potentially destructive animals, or in areas prone to vandalism.
3. Dispose of product container and unused, spoiled, or unconsumed bait as specified on this label.

Note: Bait stations are mandatory for outdoor, above-ground use. Tamper-resistant bait stations must be used if children, pets, non-target mammals, or birds may access the bait.

USE RESTRICTIONS: For control only of Norway rats, roof rats, and house mice. For use in and around agricultural buildings only. Do not apply further than 50 feet from agricultural buildings. Do not use in homes or other human residences. Do not place near or inside ventilation duct openings. Do not contaminate water, food, feedstuffs, food or feed handling equipment, or milk or meat handling equipment or surfaces that come into direct contact with food. Do not broadcast bait. When used in USDA inspected facilities, this product must be applied in tamper-resistant bait stations.

AGRICULTURAL USE LABEL

Do not sell this product in individual containers holding less than 8 pounds of bait.

SELECTION OF TREATMENT AREAS: Determine areas where rats or mice will most likely find and consume the bait. Generally, these areas are along walls, by gnawed openings, in or beside burrows, in corners and concealed places, between floors and walls, or in locations where rats and mice or their signs have been seen. Protect bait from rain and snow. Remove as much alternative food as possible.

APPLICATION DIRECTIONS:

RATS: Place 3 to 16 bait blocks (at intervals of 15 to 30 feet) per placement in infested areas. Maintain an uninterrupted supply of fresh bait for at least 10 days or until signs of rat activity cease.

HOUSE MICE: Place 1 block per placement. Space placements at 8 to 12 foot intervals in infested areas. Two blocks may be needed at points of very high mouse activity. Maintain an uninterrupted supply of fresh bait for at least 15 days or until signs of mouse activity cease.

FOLLOW-UP: Replace contaminated or spoiled bait immediately. Wearing gloves, collect and dispose of all dead, exposed animals and leftover bait. To prevent reinfestation, limit sources of rodent food, water, and harborage as much as possible. If reinfestation does occur, repeat treatment. Where a continuous source of infestation is present, establish permanent bait stations and replenish as needed.

PRECAUTIONARY STATEMENTS

HAZARDS TO HUMANS AND DOMESTIC ANIMALS

CAUTION: Harmful if swallowed or absorbed through the skin. Keep away from children, domestic animals and pets. Do not get in eyes, on skin or on clothing.

All handlers (including applicators) must wear shoes plus socks, and waterproof gloves. Any person who retrieves carcasses or unused bait following application of this product must wear gloves.

User Safety Requirements

Follow manufacturer's instruction for cleaning/maintaining PPE. If no such instructions for washables, use detergent and hot water. Keep and wash PPE separately from other laundry. Remove PPE immediately after handling this product. Wash the outside of gloves before removing. As soon as possible, wash hands thoroughly after applying bait and before eating, drinking, chewing gum, using tobacco or using the toilet and change into clean clothing.

ENVIRONMENTAL HAZARDS

This product is extremely toxic to fish, birds and other wildlife. Dogs and predatory and scavenging mammals and birds might be poisoned if they feed upon animals that have eaten this bait. Do not apply this product directly to water or to areas where surface water is present or to intertidal areas below the mean high water mark. Runoff also may be hazardous to aquatic organisms in water adjacent to treated areas. Do not contaminate water when disposing of equipment wash water or rinsate.

STORAGE AND DISPOSAL

Do not contaminate water, food or feed by storage or disposal.

Pesticide Storage: Store only in original container in a cool, dry place inaccessible to children and pets. Keep containers closed and away from other chemicals.

140A18

AGRICULTURAL USE LABEL

Pesticide Disposal: Wastes resulting from the use of this product may be placed in trash or delivered to an approved waste disposal facility.

Container Handling: Nonrefillable container. Do not reuse or refill this container. **[Plastic:]** Triple rinse (or equivalent), then offer for recycling or reconditioning; or puncture and dispose of in a sanitary landfill; or by incineration. In most states, burning is not allowed. **[Paper:]** Dispose of empty container by placing in trash, at an approved waste disposal facility or by incineration. In most states, burning is not allowed.

WARRANTY: To the extent consistent with applicable law, seller makes no warranty, expressed or implied, concerning the use of this product other than indicated on the label. Buyer assumes all risk of use and/or handling of this material when such use and/or handling is contrary to label instructions.

INNER CONTAINER - COMPLETE LABEL - PACKAGE WEIGHT 2 TO 4 LB.

CONTRAC[®]
All-Weather Blox

For Use In and Around Agricultural Buildings Only

KILLS RATS AND MICE

KILLS WARFARIN RESISTANT NORWAY RATS

Norway rats, roof rats, and house mice may consume a lethal dose in one night's feeding with first dead rodents appearing four or five days after feeding begins.

ACTIVE INGREDIENT:

Bromadiolone (CAS #28772-56-7):0.005%
OTHER INGREDIENTS*: <u>99.995%</u>
100.000%

*Contains Denatonium Benzoate

KEEP OUT OF REACH OF CHILDREN
CAUTION

AGRICULTURAL USE LABEL

FIRST AID

HAVE LABEL WITH YOU WHEN OBTAINING TREATMENT ADVICE

IF SWALLOWED:

- Call a poison control center, doctor, or 1-877-854-2494, or 1-800-858-7378* immediately for treatment advice.
- Have person sip a glass of water if able to swallow.
- Do not induce vomiting unless told to do so by the poison control center or doctor.

IF ON SKIN OR CLOTHING:

- Take off contaminated clothing. Rinse skin immediately with plenty of water for 15-20 minutes. Call a poison control center or doctor for treatment advice.

IF IN EYES:

- Hold eye open and rinse slowly and gently with water for 15-20 minutes.
- Remove contact lenses, if present, after the first 5 minutes, then continue rinsing eye.
- Call a poison control center, doctor, or 1-877-854-2494 immediately for treatment advice.

* Also call this number for information on health concerns and pesticide incidents.

NOTE TO PHYSICIAN

If swallowed or absorbed through the skin, this material may reduce the clotting ability of the blood and cause bleeding. If ingested, administer Vitamin K₁ intramuscularly or orally. Repeat as necessary based on monitoring of prothrombin times.

TREATMENT FOR PET POISONING

If animal eats bait, call veterinarian at once.

NOTE TO VETERINARIAN

Anticoagulant Bromadiolone: For animals ingesting bait and/or showing poisoning signs (bleeding or elevated prothrombin times), give Vitamin K₁. If needed, check prothrombin times every 3 days until values return to normal (up to 30 days). In severe cases, blood transfusions may be needed.

See Back/Side Panel for First Aid and additional precautionary statements.

NET WEIGHT: 2 - 4 lb.

INDIVIDUAL SALE IS PROHIBITED BY LAW

Manufactured by:



Bell Laboratories, Inc.
3699 Kinsman Blvd.
Madison, WI 53704

BATCH CODE:

EPA REG. NO. 12455- 79

EPA EST. NO. 12455-WI-1

DIRECTIONS FOR USE

It is a violation of Federal law to use this product in a manner inconsistent with its labeling.

READ THIS LABEL: Read this entire label and follow all use directions and use precautions. Use only for sites, pests, and application methods described on this label.

AGRICULTURAL USE LABEL

IMPORTANT: Do not expose children, pets, or nontarget animals to rodenticides. To help to prevent exposure:

1. Store unused product out of reach of children and pets.
2. Apply bait in locations out of reach of children, pets, domestic animals and nontarget wildlife, or in tamper-resistant bait stations. These stations must be resistant to destruction by dogs and by children under six years of age, and must be used in a manner that prevents such children from reaching into bait compartments and obtaining bait. If bait can be shaken from bait stations when they are lifted, units must be secured or otherwise immobilized. Stronger bait stations are needed in areas open to hooved livestock, raccoons, bears, or other potentially destructive animals, or in areas prone to vandalism.
3. Dispose of product container and unused, spoiled, or unconsumed bait as specified on this label.

Note: Bait stations are mandatory for outdoor, above-ground use. Tamper-resistant bait stations must be used if children, pets, non-target mammals, or birds may access the bait.

USE RESTRICTIONS: For control only of Norway rats, roof rats, and house mice. For use in and around agricultural buildings only. Do not apply further than 50 feet from agricultural buildings. Do not use in homes or other human residences. Do not place near or inside ventilation duct openings. Do not contaminate water, food, feedstuffs, food or feed handling equipment, or milk or meat handling equipment or surfaces that come into direct contact with food. Do not broadcast bait. When used in USDA inspected facilities, this product must be applied in tamper-resistant bait stations.

Do not sell this product in individual containers holding less than 8 pounds of bait.

SELECTION OF TREATMENT AREAS: Determine areas where rats or mice will most likely find and consume the bait. Generally, these areas are along walls, by gnawed openings, in or beside burrows, in corners and concealed places, between floors and walls, or in locations where rats and mice or their signs have been seen. Protect bait from rain and snow. Remove as much alternative food as possible.

APPLICATION DIRECTIONS:

RATS: Place 3 to 16 bait blocks (at intervals of 15 to 30 feet) per placement in infested areas. Maintain an uninterrupted supply of fresh bait for at least 10 days or until signs of rat activity cease.

HOUSE MICE: Place 1 block per placement. Space placements at 8 to 12 foot intervals in infested areas. Two blocks may be needed at points of very high mouse activity. Maintain an uninterrupted supply of fresh bait for at least 15 days or until signs of mouse activity cease.

FOLLOW-UP: Replace contaminated or spoiled bait immediately. Wearing gloves, collect and dispose of all dead, exposed animals and leftover bait. To prevent reinfestation, limit sources of rodent food, water, and harborage as much as possible. If reinfestation does occur, repeat treatment. Where a continuous source of infestation is present, establish permanent bait stations and replenish as needed.

PRECAUTIONARY STATEMENTS

HAZARDS TO HUMANS AND DOMESTIC ANIMALS

CAUTION: Harmful if swallowed or absorbed through the skin. Keep away from children, domestic animals and pets. Do not get in eyes, on skin or on clothing.

All handlers (including applicators) must wear shoes plus socks, and waterproof gloves. Any person who retrieves carcasses or unused bait following application of this product must wear gloves.

AGRICULTURAL USE LABEL

User Safety Requirements

Follow manufacturer's instruction for cleaning/maintaining PPE. If no such instructions for washables, use detergent and hot water. Keep and wash PPE separately from other laundry. Remove PPE immediately after handling this product. Wash the outside of gloves before removing. As soon as possible, wash hands thoroughly after applying bait and before eating, drinking, chewing gum, using tobacco or using the toilet and change into clean clothing.

ENVIRONMENTAL HAZARDS

This product is extremely toxic to fish, birds and other wildlife. Dogs and predatory and scavenging mammals and birds might be poisoned if they feed upon animals that have eaten this bait. Do not apply this product directly to water or to areas where surface water is present or to intertidal areas below the mean high water mark. Runoff also may be hazardous to aquatic organisms in water adjacent to treated areas. Do not contaminate water when disposing of equipment wash water or rinsate.

STORAGE AND DISPOSAL

Do not contaminate water, food or feed by storage or disposal.

Pesticide Storage: Store only in original container in a cool, dry place inaccessible to children and pets. Keep containers closed and away from other chemicals.

Pesticide Disposal: Wastes resulting from the use of this product may be placed in trash or delivered to an approved waste disposal facility.

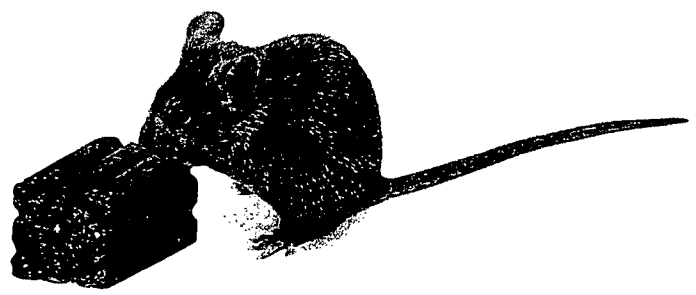
Container Handling: Nonrefillable container. Do not reuse or refill this container. **[Plastic:]** Triple rinse (or equivalent), then offer for recycling or reconditioning; or puncture and dispose of in a sanitary landfill; or by incineration. In most states, burning is not allowed. **[Paper:]** Dispose of empty container by placing in trash, at an approved waste disposal facility or by incineration. In most states, burning is not allowed.

WARRANTY: To the extent consistent with applicable law, seller makes no warranty, expressed or implied, concerning the use of this product other than indicated on the label. Buyer assumes all risk of use and/or handling of this material when such use and/or handling is contrary to label instructions.

OPTIONAL MARKETING STATEMENTS:

- All Weather Block Bait
- Ready to Use 1 oz. Block Bait
- All-Weather Formula
- With Bromadiolone
- Multi-edge shape gives rats and mice gnawing edges
- Can be used indoors or out
- For use in and around agricultural buildings
- Made in USA
- Bait Chunx
- All-Weather

OPTIONAL GRAPHIC WITHOUT TEXT:



041411