

**PRECAUTIONARY STATEMENTS
HAZARDS TO HUMANS AND DOMESTIC ANIMALS
CAUTION**

Keep away from humans, domestic animals, and pets. May be harmful or fatal if swallowed or absorbed through the skin because this material may reduce the clotting ability of the blood and cause bleeding.

Do not get in eyes, on skin, or on clothing. Wash arms, hands, and face with soap and water after applying and before eating and smoking. If swallowed call a physician at once.

NOTE TO PHYSICIAN: If ingested, administer Vitamin K₁ intramuscularly or orally as indicated in dicoumatin overdose. Repeat as necessary based on monitoring of prothrombin time.

ENVIRONMENTAL HAZARDS

This product is toxic to fish and wildlife. Keep out of lakes, streams or ponds.

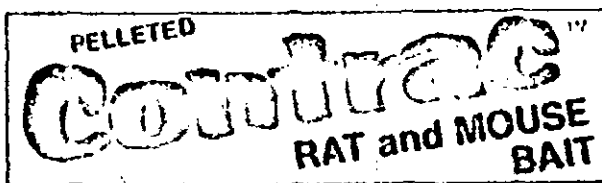
STORAGE AND DISPOSAL

Do not contaminate water, food, or feed by storage or disposal. Open burning and dumping is prohibited.

PESTICIDE DISPOSAL: Bait that cannot be used according to label instructions must be disposed of according to applicable federal, state, or local procedures.

CONTAINER DISPOSAL: Completely empty liner by shaking and tapping sides and bottom to loosen clinging particles. Empty residue into application equipment. Then dispose of liner in a sanitary landfill or by incineration if allowed by state and local authorities. If drum cannot be reverse, dispose of in the same manner.

WARRANTY: Seller makes no warranty, expressed or implied concerning the use of this product other than indicated on the label. Buyer assumes all risk of use and/or handling of this material when such use and/or handling is contrary to label instructions.



**KILLS RATS AND MICE
KILLS WARFARIN RESISTANT NORWAY RATS**

Norway rats and house mice may consume a lethal dose in one feeding with first dead rodents appearing four or five days after treatment begins.

ACTIVE INGREDIENT	00%
3-(3-(4-Bromo-1-(1-E-phenyl)-4-pyridyl)-3-hydroxy-1-phenylpropyl)-4-hydroxy-2-(1-henzopyran-2-one	
INERT INGREDIENTS	99.995%
Bromofenacil (Lethal Dose)	TOTAL 100.000%

**KEEP OUT OF REACH OF CHILDREN
CAUTION**

May be harmful or fatal if swallowed or absorbed through the skin. Do not get in eyes, on skin, or on clothing. Wash hands after handling bait. If swallowed, call a physician at once. SEE LEFT PANEL FOR ADDITIONAL PRECAUTIONARY STATEMENTS.

NET WEIGHT 45 LBS. (20.4 Kg)

Manufactured By
BELL LABORATORIES, INC.
Madison, WI 53704 U.S.A.

EPA REG NO 12455-35
EPA EST NO 12455 WI-1

**DIRECTIONS FOR USE
GENERAL USE CLASSIFICATION**

It is a violation of Federal law to use this product in a manner inconsistent with its labeling.

USE RESTRICTIONS: For control of Norway rats, Roof rats and House mice in and around the periphery of homes, industrial, commercial, and public buildings located in urban areas. CONTRAC may also be used in alleys located in urban areas. Do not use in sewers or public parks. CONTRAC may also be used inside transport vehicles (ships, trains, aircraft, and in and around related port or terminal buildings. Treated baits must be placed in locations not accessible to children, pets, domestic animals, wildlife or in other bait stations. Do not place bait in areas where there's a possibility of contaminating food or surfaces that come in direct contact with food.

SELECTION OF TREATMENT AREAS: Determine areas where rats and/or mice will most likely find and consume the bait. Generally, these areas are along walls, by ground openings in or beside burrows, in corners and concealed places, between floors and walls, or in locations where rodents or their signs have been observed. Remove as much food as possible.

APPLICATION DIRECTIONS

RATS: Apply 3 to 16 ounces of bait (usually at intervals of 15 to 30 feet) per placement. Maintain an uninterrupted supply of fresh bait for 10 days or until signs of rat activity cease.

HOUSE MICE: Apply 1/4 to 1/2 ounce of bait at intervals of 8 to 12 feet per placement. Larger placement (up to 3 ounces) may be needed at points of very high mouse activity. Maintain uninterrupted supply of fresh bait for 15 days or until signs of mouse activity cease.

Replace contaminated or spoiled bait immediately. Collect and dispose of unconsumed bait and dead exposed animals according to Container Disposal paragraph. To prevent reinfestation, eliminate food, water, and harborage as much as possible. If reinfestation does occur repeat treatment. Where a continuous source of infestation is present, establish permanent bait stations and replenish bait as needed.

12455-35