



UNITED STATES ENVIRONMENTAL PROTECTION AGENCY  
WASHINGTON, DC 20460

OFFICE OF CHEMICAL SAFETY  
AND POLLUTION PREVENTION

August 29, 2019

Jennifer Klika  
Regulatory Affairs Manager  
Bell Laboratories  
3699 Kinsman Boulevard  
Madison, WI 53704

Subject: Label Amendment – Correcting inadvertent clerical error  
Product Name: Ditract Super-Size Blox  
EPA Registration Number: 12455-14  
Application Date: 7/12/2019  
Decision Number: 554220

Dear Ms. Klika

The amended label referred to above, submitted in connection with registration under the Federal Insecticide, Fungicide and Rodenticide Act, as amended, is acceptable. This approval does not affect any conditions that were previously imposed on this registration. You continue to be subject to existing conditions on your registration and any deadlines connected with them.

A stamped copy of your labeling is enclosed for your records. This labeling supersedes all previously accepted labeling. You must submit one copy of the final printed labeling before you release the product for shipment with the new labeling. In accordance with 40 CFR 152.130(c), you may distribute or sell this product under the previously approved labeling for 18 months from the date of this letter. After 18 months, you may only distribute or sell this product if it bears this new revised labeling or subsequently approved labeling. "To distribute or sell" is defined under FIFRA section 2(gg) and its implementing regulation at 40 CFR 152.3.

Should you wish to add/retain a reference to the company's website on your label, then please be aware that the website becomes labeling under the Federal Insecticide Fungicide and Rodenticide Act and is subject to review by the Agency. If the website is false or misleading, the product would be misbranded and unlawful to sell or distribute under FIFRA section 12(a)(1)(E). 40 CFR 156.10(a)(5) list examples of statements EPA may consider false or misleading. In addition, regardless of whether a website is referenced on your product's label, claims made on the website may not substantially differ from those claims approved through the registration process. Therefore, should the Agency find or if it is brought to our attention that a website contains false or misleading statements or claims substantially differing from the EPA approved registration, the website will be referred to the EPA's Office of Enforcement and Compliance.

Your release for shipment of the product constitutes acceptance of these conditions. If these conditions are not complied with, the registration will be subject to cancellation in accordance

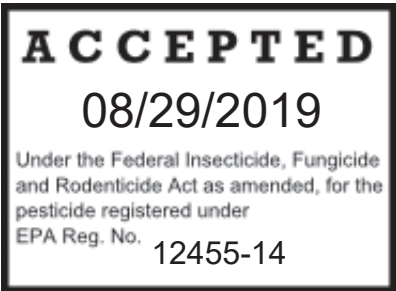
Page 2 of 2  
EPA Reg. No. 12455-14  
Decision No. 554220

with FIFRA section 6. If you have any questions, please contact Scott Campbell at Campbell.Scott@epa.gov or at (703) 347-0479.

Sincerely,

A handwritten signature in blue ink, appearing to read "Gene Benbow".

Gene Benbow, Product Manager 7  
Invertebrate & Vertebrate Branch 3  
Registration Division (7505P)  
Office of Pesticide Programs



# DITRAC® Super-Size Blox

**Mold Resistant**

**Moisture Resistant**

This product may only be used inside and within 100 feet of and man-made structures.

## ***KILLS RATS***

***Peanut Flavored***

**ACTIVE INGREDIENT:**

Diphacinone (CAS # 82-66-6):

..... 0.005%

**OTHER INGREDIENTS:**

..... 99.995%

**TOTAL:**

..... **100.00%**

EPA REG. NO. 12455-80

EPA EST. NO. 12455-WI-1<sup>k</sup>

EPA EST. NO. 12455-WI-2<sup>p</sup>

EPA EST. NO. 12455-WI-3<sup>w</sup>

[superscript is first letter of lot number]

## **KEEP OUT OF REACH OF CHILDREN CAUTION**

**NET CONTENTS:** 4 pounds (1.81 kilograms) to 50 pounds (22.68 kilograms)

**NET WEIGHT:** 4 pounds (1.81 kilograms) to 50 pounds (22.68 kilograms)

**Manufactured By:**



**Bell Laboratories, Inc.**  
3699 Kinsman Blvd.  
Madison, WI 53704

**Batch Code:**

See back [bottom] [and] [side] panel[s] for  
First Aid, additional precautionary statements, and Directions for Use.

\*Not permitted for use against the following species in California: Cotton rat, Polynesian rat, White-throated woodrat, Southern plains woodrat, and Mexican woodrat

***Bold, italicized text is information for the reader and is not part of the label.***

[Bracketed information is optional text.]

Text separated by / denotes and/or options.

<b>FIRST AID</b> <b>HAVE LABEL WHEN OBTAINING TREATMENT ADVICE</b>	
<b>If Swallowed:</b>	<ul style="list-style-type: none"><li>• Call a poison control center, doctor, or <b>1-877-854-2494</b> immediately for treatment advice.</li><li>• Have person sip a glass of water if able to swallow.</li><li>• Do not induce vomiting unless told to do so by the poison control center or doctor.</li></ul>
<b>If on Skin:</b>	<ul style="list-style-type: none"><li>• Wash with plenty of soap and water.</li></ul>
<b>NOTE TO PHYSICIAN</b> If swallowed, this material may reduce the clotting ability of the blood and cause bleeding. If ingested, administer Vitamin K <sub>1</sub> intramuscularly or orally. Repeat as necessary based on monitoring of prothrombin times.	
<b>TREATMENT FOR PET POISONING</b> If an animal eats this bait, call a veterinarian or <b>1-877-854-2494</b> at once.	
<b>NOTE TO VETERINARIAN</b> <b>Anticoagulant Diphacinone:</b> For animals ingesting bait and/or showing poisoning signs (bleeding or elevated prothrombin times), give Vitamin K <sub>1</sub> .	

### **PRECAUTIONARY STATEMENTS**

#### **Hazards to Humans and Domestic Animals**

**CAUTION:** Harmful if swallowed or absorbed through the skin. Causes moderate eye irritation. Keep away from children, domestic animals and pets. Do not get in eyes, on skin, or on clothing.

All handlers (including applicators) must wear long pants, shoes, socks, and waterproof gloves. Any person who retrieves carcasses or unused bait following application of this product must wear waterproof gloves.

#### **User Safety Requirements**

Follow manufacturer's instruction for cleaning/maintaining PPE. If no such instructions for washables exists, use detergent and hot water. Keep and wash PPE separately from other laundry. Remove PPE immediately after handling this product. Wash the outside of gloves before removing. As soon as possible, wash hands thoroughly after applying bait and before eating, drinking, chewing gum, using tobacco or using the toilet and change into clean clothing.

### **ENVIRONMENTAL HAZARDS**

This product is toxic to mammals and birds. Dogs and other predatory and scavenging mammals and birds might be poisoned if they feed upon animals that have eaten this bait. Do not apply directly to water or to areas where surface water is present or to intertidal areas below the mean high water mark. Runoff also may be hazardous to aquatic organisms in water adjacent to treated areas. Do not contaminate water when disposing of equipment wash water or rinsate.

***Bold, italicized text is information for the reader and is not part of the label.***

[Bracketed information is optional text.]

Text separated by / denotes and/or options.

## DIRECTIONS FOR USE

It is a violation of Federal law to use this product in a manner inconsistent with its labeling.

**READ THIS LABEL:** Read this entire label and follow all use directions and use precautions. Use only for sites, pests, and application methods described on this label.

**IMPORTANT:** Do not expose children, pets, or nontarget animals to rodenticides. To help to prevent exposure:

1. Store unused product out of reach of children and pets.
2. Apply bait in locations out of reach of children, pets, domestic animals and nontarget wildlife, or in tamper-resistant bait stations. These stations must be resistant to destruction by dogs and by children under six years of age, and must be used in a manner that prevents such children from reaching into bait compartments and obtaining bait. If bait can be shaken from bait stations when they are lifted, units must be secured or otherwise immobilized. Stronger bait stations are needed in areas open to hooved livestock, raccoons, bears, or other potentially destructive animals, or in areas prone to vandalism.
3. Dispose of product container and unused, spoiled, or unconsumed bait as specified on this label.

**Bait stations are mandatory for outdoor, above-ground use. Tamper-resistant bait stations must be used wherever children, pets, non-target mammals, or birds may have access to the bait placement location.**

**USE RESTRICTIONS:** This product may only be used to control the following rodent pests in and around man-made structures: Norway rat (*Rattus norvegicus*), Roof rat (*Rattus rattus*), Cotton rat\* (*Sigmodon hispidus*), Polynesian rat\* (*Rattus exulans*), White-throated woodrat\* (*Neotoma albigula*), Southern plains woodrat\* (*Neotoma micropus*), and Mexican woodrat\* (*Neotoma mexicana*). This product must be used in and within 100 feet of man-made structures constructed in a manner so as to be vulnerable to commensal rodent invasions and/or to harboring or attracting rodent infestations. Examples of such structures include homes and other permanent or temporary residences, food processing facilities, industrial and commercial buildings, trash receptacles, agricultural and public buildings, transport vehicles (ships, trains, aircraft), docks and port or terminal buildings and related structures around and associated with these sites. Fence and perimeter baiting, beyond 100 feet from a structure as defined above, is prohibited. This product must not be applied directly to food or feed crops.

Burrow baiting with [Ditrac® Super-Size Blox][This Product] is prohibited.

This product is especially suited for wet or damp areas, such as sewers. Do not place near or inside ventilation duct openings. Do not contaminate water, food, feedstuffs, food or feed handling equipment, or milk or meat handling equipment or surfaces that come into direct contact with food. When used in USDA inspected facilities, this product must be applied in tamper-resistant bait stations. Do not broadcast bait.

Do not sell this product in individual containers holding less than 4 pounds of bait.

***Bold, italicized text is information for the reader and is not part of the label.***

[Bracketed information is optional text.]

Text separated by / denotes and/or options.

**SELECTION OF TREATMENT AREAS:** Determine areas where rats will most likely find and consume the bait. Generally, these areas are along walls, by gnawed openings, in corners and concealed places, between floors and walls, or in locations where rodents or their signs have been seen. Protect bait from rain and snow. Remove as much alternative food as possible.

**APPLICATION DIRECTIONS:**

**Rats:**

Use one [block][block bait][blox] per placement. Space placements 15 to 30 feet apart in infested areas. Maintain an uninterrupted supply of fresh bait for at least 10 days or until signs of rat activity cease.

**Follow-up:**

Replace contaminated or spoiled bait immediately. While wearing gloves, collect and dispose of all dead, exposed animals and leftover bait. To prevent reinfestation, limit sources of rodent food, water, and harborage as much as possible. If reinfestation does occur, repeat treatment. Where a continuous source of infestation is present, establish permanent bait stations and replenish as needed.

For use in sewers, thread wire through block and securely attach to a stationary structure such as the bottom step of a manhole ladder or a sewer grate. Allow just enough wire for the block to rest on manhole benching. If benching is not present, suspend block a few inches above the high water mark or secure block on a board supported by opposing steps of the ladder. Securing block in this manner will reduce removal by rats or water. Use one block per manhole. Maintain an uninterrupted supply of fresh bait for at least 10 days or until signs of rat activity cease.

**STORAGE AND DISPOSAL**

Do not contaminate water, food or feed by storage or disposal.

**Pesticide Storage:** Store only in original container in a cool, dry place inaccessible to children and pets. Keep containers closed and away from other chemicals.

**Pesticide Disposal:** Wastes resulting from the use of this product may be placed in trash or delivered to an approved waste disposal facility.

**Container Handling:** Nonrefillable container. Do not reuse or refill this container. Offer for recycling, if available. Dispose of empty container by placing in trash, at an approved waste disposal facility or by incineration.

**WARRANTY:** To the extent consistent with applicable law, seller makes no warranty, expressed or implied, concerning the use of this product other than indicated on the label. Buyer assumes all risk of use and/or handling of this material when such use and/or handling is contrary to label instructions.

***Bold, italicized text is information for the reader and is not part of the label.***

[Bracketed information is optional text.]

Text separated by / denotes and/or options.

**OPTIONAL MARKETING STATEMENTS:**

All-Weather

All-Weather Blox

All-Weather Formula

Blox

Blox Form

Blox Form Bait

Can be Used Indoors or Out

Contains Diphacinone

Diphacinone

For Use In and Around Homes and Buildings

For Use In and Around Agricultural Buildings

Kills Rats

Made in USA

Mold and Moisture Resistant

With Diphacinone

***Bold, italicized text is information for the reader and is not part of the label.***

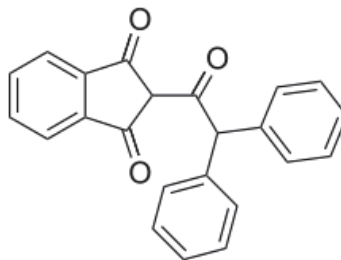
[Bracketed information is optional text.]

Text separated by / denotes and/or options.

**OPTIONAL GRAPHICS:**



[Image of Diphacinone  
Structure]



***Bold, italicized text is information for the reader and is not part of the label.***

[Bracketed information is optional text.]

Text separated by / denotes and/or options.