

12455-5

09-22-2010

1/11



UNITED STATES ENVIRONMENTAL PROTECTION AGENCY  
WASHINGTON, D.C. 20460

OFFICE OF CHEMICAL SAFETY  
AND POLLUTION PREVENTION

John Lublinkhof  
Bell Laboratories, Inc.  
3699 Kinsman Blvd.  
Madison, WI 53704

SEP 22 2010

Subject: Notification; Per PR-Notice 98-10  
Ditrac All-Weather Cake  
EPA Reg. No. 12455-5  
Date Submitted: September 10, 2010

Dear Mr. Lublinkhof:

The Agency is in receipt of your Application for Pesticide Notification under Pesticide Registration Notice (PRN) 98-10 dated September 10, 2010 for the product referenced above. The Registration Division (RD) has conducted a review of this request for its applicability under PRN 98-10 and finds that the action requested falls within the scope of PRN 98-10. The label submitted with the application has been stamped "Notification" and will be placed in our records.

If you have any questions regarding this letter, please contact me at (703) 306-0415 or [davis.kable@epa.gov](mailto:davis.kable@epa.gov).

Sincerely,

A handwritten signature in black ink, appearing to read "Kable Bo Davis".

Kable Bo Davis  
Entomologist  
Insecticide-Rodenticide Branch  
Registration Division (7505P)

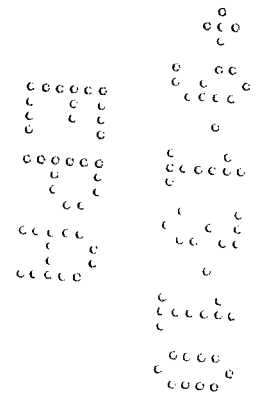


**Continuation of Section II, EPA Form 8570-1**

This notification is consistent with the provisions of PR Notice 98-10 and EPA regulations at 40 CFR 152.46, and no other changes have been made to the labeling or the confidential statement of formula of this product. I understand that it is a violation of 18 U.S.C. Sec. 1001 to willfully make any false statement to EPA. I further understand that if this notification is not consistent with the terms of PR Notice 98-10 and 40 CFR 152.46, this product may be in violation of FIFRA and I may be subject to enforcement action and penalties under sections 12 and 14 of FIFRA.

**NOTIFICATION**

**SEP 22 2010**



1/4

OUTER CONTAINER - COMPLETE LABEL - PACKAGE WEIGHTS 4 LB. OR GREATER

# DITRAC<sup>®</sup>

All-Weather Cake

This product May Only be Used Inside and Within 50 Feet of Buildings or Inside of Transport Vehicles (Ships, Trains, Aircraft)

Mold Resistant      Moisture Resistant

PEANUT FLAVORED

*KILLS RATS AND MICE*

*KILLS NORWAY RATS, ROOF RATS  
AND HOUSE MICE*

**NOTIFICATION**

**SEP 22 2010**

ACTIVE INGREDIENT:

Diphacinone (CAS #82-66-6):..... 0.005%

INERT INGREDIENTS:..... 99.995%  
100.000%

**KEEP OUT OF REACH OF CHILDREN**

**CAUTION**

**FIRST AID**

**HAVE LABEL WITH YOU WHEN OBTAINING TREATMENT ADVICE**

**IF SWALLOWED:**

- Call a poison control center, doctor, or 1-877-854-2494 immediately for treatment advice.
- Have person sip a glass of water if able to swallow.
- Do not induce vomiting unless told to do so by the poison control center or doctor.

**IF ON SKIN:**

- Wash with plenty of soap and water.

**TREATMENT FOR PET POISONING**

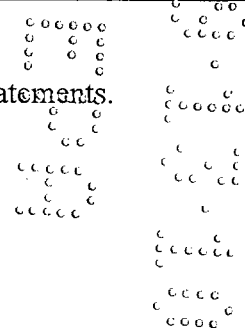
If animal eats bait, call veterinarian at once.

**NOTE TO PHYSICIAN OR VETERINARIAN**

**Anticoagulant Diphacinone:** If swallowed, this material may reduce the clotting ability of blood and cause bleeding. **For humans and dogs** that have ingested this product and/or have obvious poisoning symptoms (bleeding or prolonged prothrombin times), give Vitamin K<sub>1</sub> intramuscularly or orally.

See Back/Side Panel for First Aid and additional precautionary statements.

NET WEIGHT: 4 -50 lb.



Manufactured by:

Batch Code:



**Bell Laboratories, Inc.**  
3699 Kinsman Blvd.  
Madison, WI 53704

EPA REG. NO. 12455-5

EPA EST. NO. 12455-WI-1

5  
11

### DIRECTIONS FOR USE

It is a violation of Federal law to use this product in a manner inconsistent with its labeling.

**READ THIS LABEL:** Read this entire label and follow all use directions and use precautions. Use only for sites, pests, and application methods described on this label.

**IMPORTANT:** Do not expose children, pets, or nontarget animals to rodenticides. To help to prevent exposure:

1. Store unused product out of reach of children and pets.
2. Apply bait in locations out of reach of children, pets, domestic animals and nontarget wildlife, or in tamper-resistant bait stations. These stations must be resistant to destruction by dogs and by children under six years of age, and must be used in a manner that prevents such children from reaching into bait compartments and obtaining bait. If bait can be shaken from bait stations when they are lifted, units must be secured or otherwise immobilized. Stronger bait stations are needed in areas open to hooved livestock, raccoons, bears, or other potentially destructive animals, or in areas prone to vandalism.
3. Dispose of product container and unused, spoiled, or unconsumed bait as specified on this label.

Tamper-resistant bait stations must be used if children, pets, non-target mammals, or birds may access the bait.

**USE RESTRICTIONS:** For control of Norway rats, roof rats and house mice in and around homes, industrial, commercial, agricultural, and public buildings, and similar man-made structures. **Do not apply further than 50 feet from buildings.** This product is especially suited for wet or damp areas. Do not place near or inside ventilation duct openings. Do not contaminate water, food, feedstuffs, food or feed handling equipment, or milk or meat handling equipment or surfaces that come into direct contact with food. When used in USDA-inspected facilities, this product must be applied in tamper-resistant bait stations. Do not broadcast bait. Do not use in sewers.

Do not sell this product in individual containers holding less than 4 pounds of bait.

**SELECTION OF TREATMENT AREAS:** Determine areas where rats or mice will most likely find and consume the bait. Generally, these areas are along walls, by gnawed openings, in or beside burrows, in corners and concealed places, between floors and walls, or in locations where rodents or their signs have been seen. Protect bait from rain and snow. Remove as much alternative food as possible.

### APPLICATION DIRECTIONS:

Each DITRAC All-Weather CAKE consists of a one-pound slab scored to be broken into four 4 oz. pieces.

**RATS:** Break and apply 1 to 4 pieces of bait (usually at intervals of 15 to 30 feet) per placement. Maintain an uninterrupted supply of fresh bait for at least 10 days or until signs of rat activity cease.

**MICE:** Obtain 1 oz. bait pieces by breaking 4 oz. pieces of block bait in half and breaking each half in half. Use one 1 oz. piece per bait placement. Space placements at 8 to 12 foot intervals. Two 1 oz.

pieces may be needed at points of very high mouse activity. Maintain an uninterrupted supply of fresh bait for at least 15 days or until signs of mouse activity cease.

**FOLLOW-UP:** Replace contaminated or spoiled bait immediately. Using gloves, collect and dispose of all dead, exposed animals and leftover bait. To prevent reinfestation, limit sources of rodent food, water and harborage as much as possible. If reinfestation does occur, repeat treatment. Where a continuous source of infestation is present, establish permanent bait stations and replenish as needed.

### PRECAUTIONARY STATEMENTS

#### Hazards to Humans and Domestic Animals

**CAUTION:** Harmful if swallowed or absorbed through the skin. Keep away from children, domestic animals and pets. Do not get in eyes, on skin or on clothing.

All handlers (including applicators) must wear long-sleeve shirt, long pants, shoes plus socks, and gloves. Any person who retrieves carcasses or unused bait following application of this product must wear waterproof gloves.

#### User Safety Requirements

Follow manufacturer's instructions for cleaning/maintaining PPE. If no such instructions for washables, use detergent and hot water. Keep and wash PPE separately from other laundry. Remove PPE immediately after handling this product. Wash the outside of gloves before removing. As soon as possible, wash hands thoroughly after applying bait and before eating, drinking, chewing gum, using tobacco or using the toilet and change into clean clothing.

#### Environmental Hazards

This product is toxic to mammals and birds. Dogs and other predatory and scavenging mammals and birds might be poisoned if they feed upon animals that have eaten this bait. Do not apply directly to water or to areas where surface water is present or to intertidal areas below the mean high water mark. Runoff also may be hazardous to aquatic organisms in water adjacent to treated areas. Do not contaminate water when disposing of equipment wash water or rinsate.

### STORAGE AND DISPOSAL

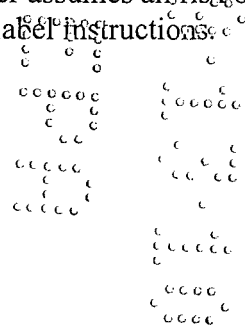
Do not contaminate water, food or feed by storage or disposal.

**STORAGE:** Store only in original container in a cool, dry place inaccessible to children and pets. Keep containers closed and away from other chemicals.

**PESTICIDE DISPOSAL:** Wastes resulting from the use of this product may be placed in trash or delivered to an approved waste disposal facility.

**CONTAINER HANDLING:** Nonrefillable container. Do not reuse or refill this container. Offer for recycling, if available. Dispose of empty container by placing in trash, at an approved waste disposal facility or by incineration.

**WARRANTY:** To the extent consistent with applicable law, seller makes no warranty, expressed or implied, concerning the use of this product other than indicated on the label. Buyer assumes all risk of use and/or handling of this material when such use and/or handling is contrary to label instructions.



2  
11

INNER CONTAINER - COMPLETE LABEL - PACKAGE WEIGHT 2 LB.

# DITRAC®

All-Weather Cake

**This product May Only be Used Inside and Within 50 Feet of Buildings or Inside of Transport Vehicles (Ships, Trains, Aircraft)**

**Mold Resistant      Moisture Resistant**

**PEANUT FLAVORED**

**KILLS RATS AND MICE**

**KILLS NORWAY RATS, ROOF RATS  
AND HOUSE MICE**

**ACTIVE INGREDIENT:**

Diphacinone (CAS #82-66-6):..... 0.005%

INERT INGREDIENTS:..... 99.995%  
100.000%

**KEEP OUT OF REACH OF CHILDREN**

## CAUTION

### FIRST AID

**HAVE LABEL WITH YOU WHEN OBTAINING TREATMENT ADVICE**

**IF SWALLOWED:**

- Call a poison control center, doctor, or 1-877-854-2494 immediately for treatment advice.
- Have person sip a glass of water if able to swallow.
- Do not induce vomiting unless told to do so by the poison control center or doctor.

**IF ON SKIN:**

- Wash with plenty of soap and water.

### TREATMENT FOR PET POISONING

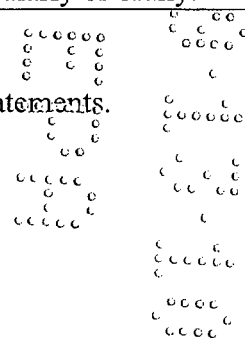
If animal eats bait, call veterinarian at once.

### NOTE TO PHYSICIAN OR VETERINARIAN

**Anticoagulant Diphacinone:** If swallowed, this material may reduce the clotting ability of blood and cause bleeding. **For humans and dogs** that have ingested this product and/or have obvious poisoning symptoms (bleeding or prolonged prothrombin times), give Vitamin K<sub>1</sub> intramuscularly or orally.

See Back/Side Panel for First Aid and additional precautionary statements.

NET WEIGHT: 2 lb.



Manufactured by:

Batch Code:



**Bell Laboratories, Inc.**  
3699 Kinsman Blvd.  
Madison, WI 53704

EPA REG. NO. 12455-5

EPA EST. NO. 12455-WI-1

### DIRECTIONS FOR USE

It is a violation of Federal law to use this product in a manner inconsistent with its labeling.

**READ THIS LABEL:** Read this entire label and follow all use directions and use precautions. Use only for sites, pests, and application methods described on this label.

**IMPORTANT:** Do not expose children, pets, or nontarget animals to rodenticides. To help to prevent exposure:

1. Store unused product out of reach of children and pets.
2. Apply bait in locations out of reach of children, pets, domestic animals and nontarget wildlife, or in tamper-resistant bait stations. These stations must be resistant to destruction by dogs and by children under six years of age, and must be used in a manner that prevents such children from reaching into bait compartments and obtaining bait. If bait can be shaken from bait stations when they are lifted, units must be secured or otherwise immobilized. Stronger bait stations are needed in areas open to hoofed livestock, raccoons, bears, or other potentially destructive animals, or in areas prone to vandalism.
3. Dispose of product container and unused, spoiled, or unconsumed bait as specified on this label.

Tamper-resistant bait stations must be used if children, pets, non-target mammals, or birds may access the bait.

**USE RESTRICTIONS:** For control of Norway rats, roof rats and house mice in and around homes, industrial, commercial, agricultural, and public buildings, and similar man-made structures. **Do not apply further than 50 feet from buildings.** This product is especially suited for wet or damp areas. Do not place near or inside ventilation duct openings. Do not contaminate water, food, feedstuffs, food or feed handling equipment, or milk or meat handling equipment or surfaces that come into direct contact with food. When used in USDA-inspected facilities, this product must be applied in tamper-resistant bait stations. Do not broadcast bait. Do not use in sewers.

Do not sell this product in individual containers holding less than 4 pounds of bait.

**SELECTION OF TREATMENT AREAS:** Determine areas where rats or mice will most likely find and consume the bait. Generally, these areas are along walls, by gnawed openings, in or beside burrows, in corners and concealed places, between floors and walls, or in locations where rodents or their signs have been seen. Protect bait from rain and snow. Remove as much alternative food as possible.

### APPLICATION DIRECTIONS:

Each DITRAC All-Weather CAKE consists of a one-pound slab scored to be broken into four 4 oz. pieces.

**RATS:** Break and apply 1 to 4 pieces of bait (usually at intervals of 15 to 30 feet) per placement. Maintain an uninterrupted supply of fresh bait for at least 10 days or until signs of rat activity cease.

**MICE:** Obtain 1 oz. bait pieces by breaking 4 oz. pieces of block bait in half and breaking each half in half. Use one 1 oz. piece per bait placement. Space placements at 8 to 12 foot intervals. Two 1 oz.



11/2

pieces may be needed at points of very high mouse activity. Maintain an uninterrupted supply of fresh bait for at least 15 days or until signs of mouse activity cease.

**FOLLOW-UP:** Replace contaminated or spoiled bait immediately. Using gloves, collect and dispose of all dead, exposed animals and leftover bait. To prevent reinfestation, limit sources of rodent food, water and harborage as much as possible. If reinfestation does occur, repeat treatment. Where a continuous source of infestation is present, establish permanent bait stations and replenish as needed.

### PRECAUTIONARY STATEMENTS

#### Hazards to Humans and Domestic Animals

**CAUTION:** Harmful if swallowed or absorbed through the skin. Keep away from children, domestic animals and pets. Do not get in eyes, on skin or on clothing.

All handlers (including applicators) must wear long-sleeve shirt, long pants, shoes plus socks, and gloves. Any person who retrieves carcasses or unused bait following application of this product must wear waterproof gloves.

#### User Safety Requirements

Follow manufacturer's instructions for cleaning/maintaining PPE. If no such instructions for washables, use detergent and hot water. Keep and wash PPE separately from other laundry. Remove PPE immediately after handling this product. Wash the outside of gloves before removing. As soon as possible, wash hands thoroughly after applying bait and before eating, drinking, chewing gum, using tobacco or using the toilet and change into clean clothing.

#### Environmental Hazards

This product is toxic to mammals and birds. Dogs and other predatory and scavenging mammals and birds might be poisoned if they feed upon animals that have eaten this bait. Do not apply directly to water or to areas where surface water is present or to intertidal areas below the mean high water mark. Runoff also may be hazardous to aquatic organisms in water adjacent to treated areas. Do not contaminate water when disposing of equipment wash water or rinsate.

### STORAGE AND DISPOSAL

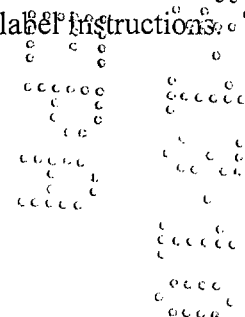
Do not contaminate water, food or feed by storage or disposal.

**STORAGE:** Store only in original container in a cool, dry place inaccessible to children and pets. Keep containers closed and away from other chemicals.

**PESTICIDE DISPOSAL:** Wastes resulting from the use of this product may be placed in trash or delivered to an approved waste disposal facility.

**CONTAINER HANDLING:** Nonrefillable container. Do not reuse or refill this container. Offer for recycling, if available. Dispose of empty container by placing in trash, at an approved waste disposal facility or by incineration.

**WARRANTY:** To the extent consistent with applicable law, seller makes no warranty, expressed or implied, concerning the use of this product other than indicated on the label. Buyer assumes all risk of use and/or handling of this material when such use and/or handling is contrary to label instructions.

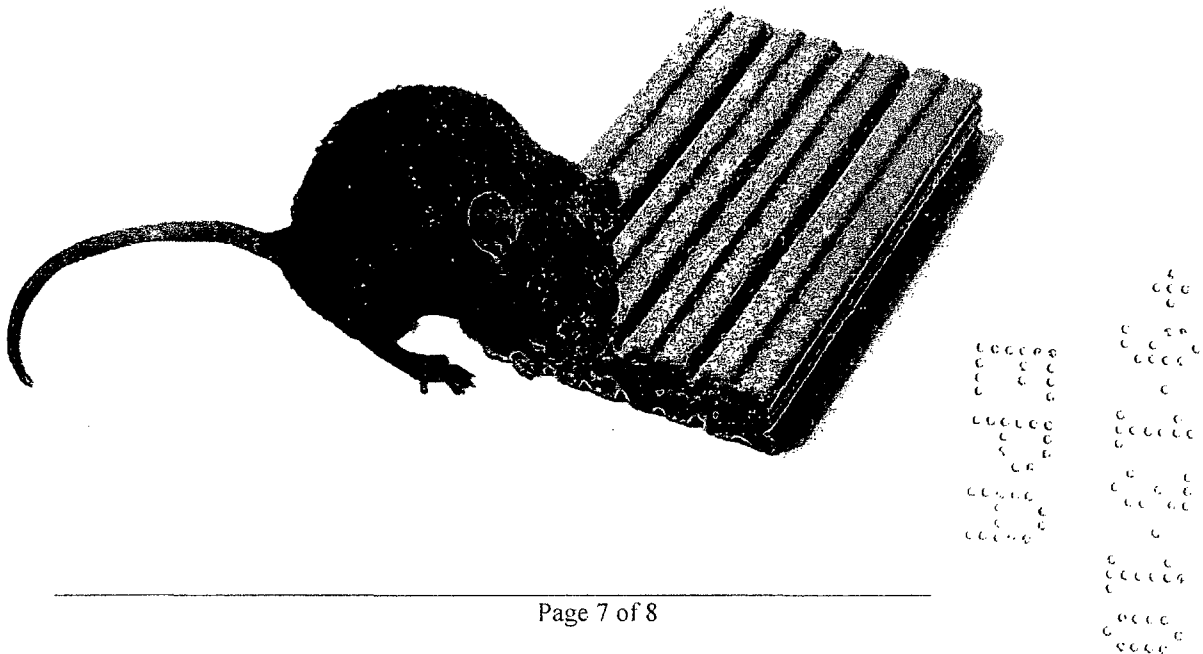
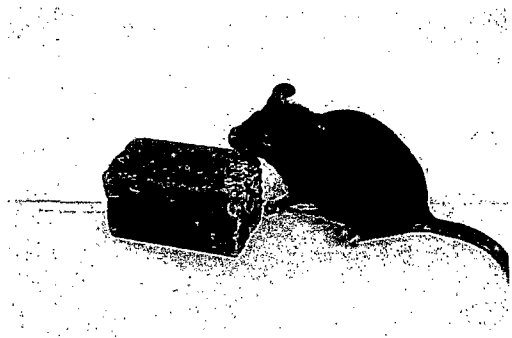


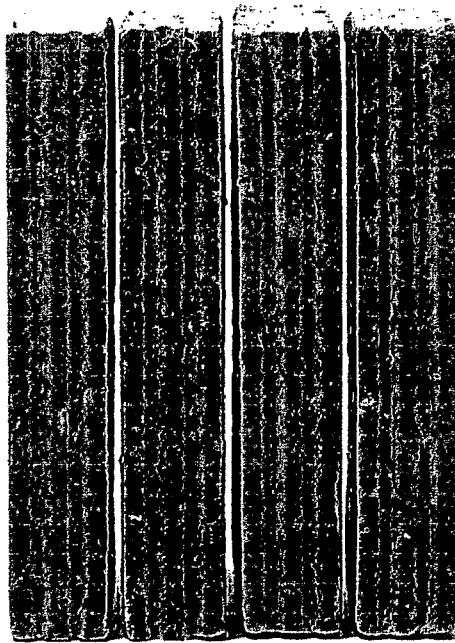
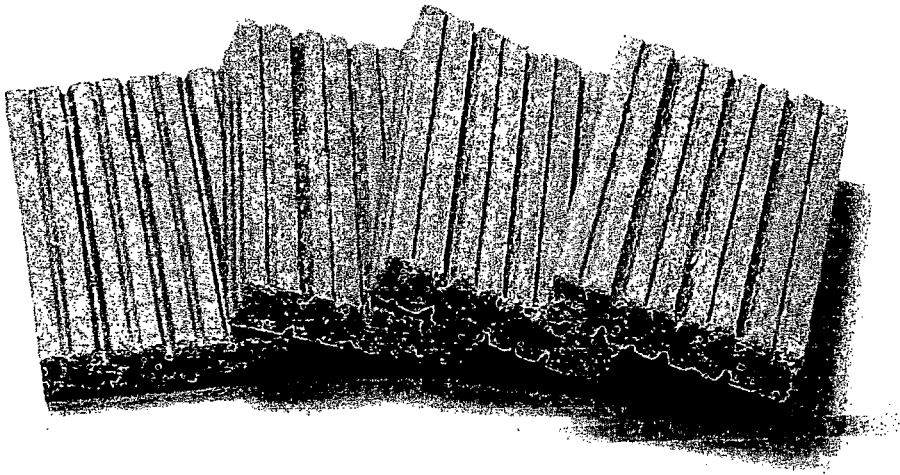
2/15

**OPTIONAL MARKETING STATEMENTS:**

With Diphacinone  
For Use in and Around Homes and Buildings  
For Use in and Around Agricultural Buildings  
Palatable Formulation  
All-Weather Bait  
All-Weather Formula  
Multi-Edge Shape Gives Rodents Gnawing Edges  
Can be Used Indoors or Out  
Can be Used Alone or in Tomcat Bait Stations  
Ideal for Use in Tomcat Bait Stations  
Made in USA  
Block Form Bait  
All-Weather Cake

**OPTIONAL GRAPHICS WITHOUT TEXT:**





Version 091010

