

**DIRECTIONS FOR USE**

**APPLICATION:** PRO BOLL TOX-6 Emulsifiable Concentrate may be applied by either ground equipment or by aircraft. For ground equipment dilute in sufficient water to give adequate coverage (5 to 10 gallons per acre) for general use. For aircraft dilute 2.5 to 4 gallons of water per acre.

Toxaphene should be applied aerially to give recommended dosage per acre for control of the insects. This will depend on the output of the spraying equipment used. Recommendations usually call for use of 1 nozzle at 5 lbs. pressure in early sprays, 2 nozzles at 30 lbs. pressure when cotton is 20 inches high, and 3 nozzles at 40 lbs. pressure when cotton is 24-26 inches high. Tractor speed should be adjusted to give the required dosage per acre. Proper coverage is essential.

**EARLY SEASON:** For control of Thrips, Plant Bugs and Fleahoppers, use 2 1/2 pints per acre for the first application and 2 pints per acre in later sprays in sufficient water to give good coverage. Make 2 or 3 applications, starting when cotton is in the four-leaf stage or earlier if heavy damage is seen.

**LATE SEASON:** For control of Bollworms, Boll Weevils, Fall Armyworms and Plant Bugs, use 2-3 pints per acre. Repeat at 5- to 7-day intervals.

**PRECAUTIONS IN USING**

This product is toxic to fish and wildlife. Birds feeding on treated areas may be killed. Keep out of lakes, streams, or ponds. Do not apply when weather conditions favor drift from areas treated. Do not contaminate water by cleaning of equipment, or disposal of wastes. Apply this product only as specified on this label. Decontaminate and destroy empty container to prevent re-use. Decontaminate by washing thoroughly with a strong solution of alkali and detergent and rinse with water.

Do not graze dairy animals or animals being fattened for slaughter in field treated late in the season.

This product is toxic to bees and should not be applied when bees are active in visiting the area.

**CALL A PHYSICIAN AT ONCE IN ALL CASES OF SUSPECTED POISONING**

In case of poisoning, give first aid. If swallowed, give 1 quart of water. If inhaled, get fresh air. If on skin, wash with soap and water. If in eyes, wash with water. If on clothing, remove clothing and wash with water. If on hands, wash with water. If on face, wash with water. If on mouth, wash with water. If on nose, wash with water. If on ears, wash with water. If on hair, wash with water. If on scalp, wash with water. If on neck, wash with water. If on chest, wash with water. If on abdomen, wash with water. If on back, wash with water. If on legs, wash with water. If on feet, wash with water. If on hands, wash with water. If on face, wash with water. If on mouth, wash with water. If on nose, wash with water. If on ears, wash with water. If on hair, wash with water. If on scalp, wash with water. If on neck, wash with water. If on chest, wash with water. If on abdomen, wash with water. If on back, wash with water. If on legs, wash with water. If on feet, wash with water.

**PRO - BOLL**



**TOX-6**

**EMULSIFIABLE CONCENTRATE**

Contains 6 Pounds of Toxaphene per gallon

**FOR COTTON ONLY**

For control of Bollworms, Boll Weevils, Thrips, Plant Bugs, Fleahoppers, Fall Armyworms

**ACTIVE INGREDIENTS:**

Toxaphene 6.0000  
 Ethyl Acrylate 0.0000  
 Ethyl Alcohol 0.0000  
 Butyl Cellosolve 0.0000

**INERT INGREDIENTS**

GALLONS NET



**POISON**



DO NOT USE, POUR, SPILL OR STORE NEAR HEAT OR OPEN FLAME

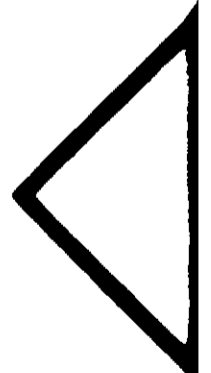
See other cautions on this label

**NOTICE OF WARRANTY**

This product is warranted to be free from defects in material and workmanship under normal conditions of use. It is not warranted to be effective against all insects or to give a permanent control. The user assumes all responsibility for the proper use of this product. The manufacturer is not liable for any damage to property or persons caused by the use of this product.

**PRO BOLL CHEMICAL COMPANY**  
 DUNN, LOUISIANA

1300



PRO - BOLL



# TOX-6

EMULSIFIABLE CONCENTRATE

Contains 6 Pounds of Toxaphene per gallon

FOR COTTON ONLY

For control of Bollworms, Boll Weevils,  
Thrips, Plant Bugs, Fleahoppers, Fall Armyworms

### ACTIVE INGREDIENTS

Toxaphene  
6.000000  
Inert Ingredients  
34.000000  
Total Weight 40.000000

### INERT INGREDIENTS

GALLONS NET



DO NOT USE, POUR, SPILL OR STORE NEAR HEAT OR OPEN FLAME

See other cautions on this label

### NOTICE OF WARRANTY

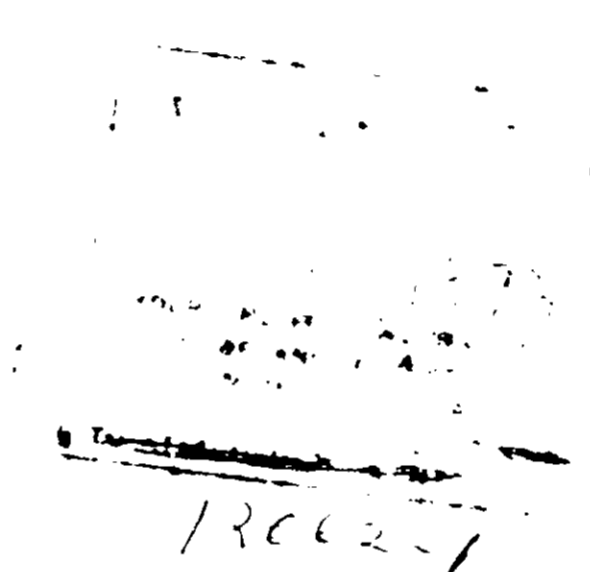
This product is warranted to be free from adulteration and to conform to the specifications stated on the label. It is sold as a concentrate and must be diluted before use. The user must follow the directions on the label for proper application and use. The manufacturer is not responsible for the results of the use of this product if the user does not follow the directions on the label.

PRO BOLL CHEMICAL COMPANY  
DUNN, LOUISIANA

# POISON

### WARNING

May be fatal if swallowed. Do not breathe vapors. Do not get on skin, in eye, or on clothing. Wash thoroughly. Keep away from children and domestic animals. To protect fish and wildlife, do not contaminate streams, lakes or ponds with the material. Do not contaminate feed and feedstuffs.



**WARNING**  
KEEP AWAY from FEED or FOOD PRODUCTS

**POISON**  
CAUTION—DO NOT DROP

IF LEAKING **DON'T** BREATHE FUMES  
TOUCH CONTENTS  
SWALLOW

This is to certify that the contents of this package are properly described by name and are packed and marked and are in proper condition for transportation according to the Regulations prescribed by the Interstate Commerce Commission.

Pro-Boll Chemical Company  
Dunn, Louisiana

Shipper's name required hereon for shipments by EXPRESS