



U.S. Environmental Protection Agency
 Office of
 Chemical Safety
 and Pollution Prevention
 Registration Division (H7504P)
 1200 Pennsylvania Avenue, N.W.
 Washington, D.C. 20460

NOTICE OF PESTICIDE:

Registration
 Reregistration
 (under FIFRA, as amended)

EPA Reg. Number:

11930-16

Date of Issuance:

MAR 27 2013

Term of Issuance:

Conditional

Name of Pesticide Product:

ACTIPERM 10% E.C.
Multi-Purpose Insecticide

Name and Address of Registrant (include ZIP Code):

GIL Manufacturing, Inc.
P.O. Box 242725
Montgomery, AL 36124

Note: Changes in labeling differing in substance from that accepted in connection with this registration must be submitted to and accepted by the Registration Division prior to use of the label in commerce. In any correspondence on this product always refer to the above EPA registration number.

On the basis of information furnished by the registrant, the above named pesticide is hereby registered/reregistered under the Federal Insecticide, Fungicide and Rodenticide Act. Registration is in no way to be construed as an endorsement or recommendation of this product by the Agency. In order to protect health and the environment, the Administrator, on his motion, may at any time suspend or cancel the registration of a pesticide in accordance with the Act. The acceptance of any name in connection with the registration of a product under this Act is not to be construed as giving the registrant a right to exclusive use of the name or to its use if it has been covered by others.

This product is conditionally registered in accordance with FIFRA sec. 3(c)(7)(A) provided that you:

1. Submit and/or cite all data required for registration of your product under FIFRA sec. 3(c)(5) when the Agency requires all registrants of similar products to submit such data; and submit acceptable responses required for reregistration of your product under FIFRA section 4.

(Continued on page 2)

Signature of Approving Official:

See page # 2

Richard Gebken, Product Manager
 Insecticide Branch, Registration Division (7504P)

Date:

MAR 27 2013

2. Revise the EPA Registration Number to read, EPA Registration Number 11930-16.

Submit two copies of the final printed label for the record.

If these conditions are not complied with, the registration will be subject to cancellation in accordance with FIFRA sec. 6(e). Your release for shipment of the product constitutes acceptance of these conditions.

If you have any questions, please contact Melody Banks on 703 305 5413 or via email at banks.melody@epa.gov.

A stamped copy of the label is enclosed for your records.

Sincerely yours,



Richard Gebken
Product Manager
Insecticide Branch
Registration Division 7505P

3/7

RESTRICTED USE PESTICIDE DUE TO HIGH DERMAL TOXICITY

For Retail Sale to and use only by Certified Applicators or persons under their direct supervision and only for those uses covered by the Certified Applicator's Certification.

ACTIPERM 10% E.C. MULTI-PURPOSE INSECTICIDE

Dossier Page 2 of 6
Label unit 1 of 5

• A BROAD SPECTRUM MULTI-USE INSECTICIDE • QUICK KNOCKDOWN • FOR OUTDOORS AND IN NON-FOOD / FEED AREAS OF COMMERCIAL WAREHOUSES AND IN NON-FOOD / FEED PROCESSING ESTABLISHMENTS. • FOR USE ON LIVESTOCK: CATTLE (BEEF AND DAIRY), GOATS, SHEEP, SWINE, HORSES AND POULTRY.

ACTIVE INGREDIENT:
PERMETHRIN (CAS 52645-53-1) 10.00%
OTHER INGREDIENTS: 90.00%
TOTAL ... 100.00%

Contains Petroleum Distillates
EPA Reg. No. 11930-RA EPA Est. No. 62778-AL-1

**KEEP OUT OF REACH OF CHILDREN
WARNING**

| FIRST AID | |
|------------------------|---|
| If on skin or clothing | <ul style="list-style-type: none"> Take off contaminated clothing. Rinse skin immediately with plenty of water for 15 to 20 minutes. Call a poison control center or doctor for treatment advice. |
| If in eyes | <ul style="list-style-type: none"> Hold eye open and rinse slowly and gently with water for 15 to 20 minutes. Remove contact lenses, if present, after the first 5 minutes, then continue rinsing eye. Call a poison control center or doctor for treatment advice. |
| If inhaled | <ul style="list-style-type: none"> Move person to fresh air. If person is not breathing, call 911 or an ambulance, then give artificial respiration, preferably mouth-to-mouth if possible. Call a poison control center or doctor for further treatment advice. |
| If swallowed | <ul style="list-style-type: none"> Call a poison control center or doctor immediately for treatment advice. Do not induce vomiting unless told to do so by a poison control center or doctor. Do not give any liquid to the person. Do not give anything by mouth to an unconscious person. |
| | *HOT LINE NUMBER 1-800-858-7376 This product is a Synthetic Pyrethroid |
| | Have the product container or label with you when calling a poison control center or doctor, or going for treatment. *You may also contact 1-800-858-7376 for emergency medical treatment information. |
| | Note To Physician: Contains petroleum distillate; vomiting may cause aspiration pneumonia. Do not administer or instill milk, cream or other substances containing vegetable or animal fats which enhance absorption of lipophilic substances. |

ACCEPTED
MAR 27 2013
Under the Federal Insecticide, Fungicide, and Rodenticide Act, as amended, for the pesticides registered under EPA Reg. No. 11930-16

See Side and Back Panel For additional Precautionary Statements.

NET CONTENTS: 1 QUART 1 GALLON 5 GALLONS 30 GALLONS 55 GALLONS

Optional pic. of Flag



Manufactured in the U.S.A.



Gil Manufacturing, Inc.
P.O. Box 242725 - Montgomery, AL 36124 U.S.A.

87

ACTIPERM 10 % E.C.
MULTI-PURPOSE INSECTICIDE

Dossier Page 3 of 6
Label unit 2 of 5

READ ENTIRE LABEL BEFORE EACH USE

PRECAUTIONARY STATEMENTS

HAZARDS TO HUMANS AND DOMESTIC ANIMALS

WARNING: Causes skin irritation. Do not get on skin, or on clothing. Harmful if inhaled. Avoid breathing vapor or spray. Causes moderate eye irritation. Avoid contact with eyes. Prolonged or frequently repeated skin contact may cause allergic reactions in some individuals. Wear Coveralls worn over long sleeved shirt and long pants, socks, chemical resistant footwear, and chemical resistant gloves (barrier laminate, nitrile rubber, neoprene, viton, selection category F*).

PERSONAL PROTECTIVE EQUIPMENT (PPE)

Some materials that are chemical-resistant to this product are barrier laminate, butyl rubber greater or equal to 14 mils and nitrile rubber greater or equal to 14 mils. If you want more options, follow the instructions for category F on an EPA chemical-resistance category selection chart.

Applicators using ULV cold foggers or fog / mist generators in indoor spaces must wear:

- Chemical resistant gloves,
- Chemical-resistant footwear plus socks, and
- Chemical resistant headgear, if overhead exposure.

Applicators using ULV cold foggers and/or fog / mist generators in outdoor spaces must wear:

- Long-sleeve shirt and long pants,
- Shoes plus socks, and
- Chemical-resistant gloves

All other mixers, loaders, applicators, and other handlers must wear:

- Long-sleeve shirt and long pants,
- Shoes plus socks,
- Chemical-resistant gloves for all handlers except for applicators using motorized ground equipment, pilots, and flaggers.
- Chemical resistant apron for mixers / loaders, persons cleaning equipment, and persons exposed to the concentrate and for handlers performing animal dip

User Safety Requirements

Follow manufacturer's instructions for cleaning/maintaining PPE. If no such instructions for washables exist, use detergent and hot water. Keep and wash PPE separately from other laundry.

Discard clothing and other absorbent materials that have been drenched or heavily contaminated with this product's concentrate. Do not reuse them.

Users should wash hands before eating, drinking, chewing gum, using tobacco or using the toilet.

Users should remove clothing / PPE immediately if pesticide gets inside. Then wash thoroughly and put on clean clothing.

Users should remove PPE immediately after handling this product. Wash the outside of gloves before removing. As soon as possible, wash thoroughly and change into clean clothing.

ENTRY RESTRICTIONS

For space spray use

Do not enter or allow others to enter until vapors, mists, and aerosols have dispersed, and the treated area has been thoroughly ventilated.

For surface spray use

Except when applying to livestock, do not enter or allow others to enter treated area until sprays have dried.

**ENVIRONMENTAL HAZARDS
FOR TERRESTRIAL APPLICATIONS**

This product is extremely toxic to aquatic organisms, including fish and invertebrates. To protect the environment, do not allow pesticide to enter or run off into storm drains, drainage ditches, gutters or surface waters. Applying this product in calm weather when rain is not predicted for the next 24 hours will help to ensure that wind or rain does not blow or wash pesticide off the treatment area. Rinsing application equipment over the treated area will help avoid runoff to water bodies or drainage systems.

This pesticide is highly toxic to bees exposed to direct treatment on blooming crops or weeds. Do not apply this product or allow it to drift to blooming crops or weeds while bees are actively visiting the treatment area.

**ENVIRONMENTAL HAZARDS
FOR WIDE AREA**

MOSQUITO ADULTICIDE APPLICATIONS

This pesticide is extremely toxic to aquatic organisms including fish and invertebrates. Runoff from treated areas or deposition of spray droplets into a body of water may be hazardous to fish and aquatic invertebrates. When applying as a wide area mosquito adulticide, before making the first application in a season, it is advisable to consult with the State or Tribal agency with primary responsibility for pesticide regulation to determine if other regulatory requirements exist.

When applying as a wide area mosquito adulticide, do not apply over bodies of water (lakes, rivers, permanent streams, natural ponds, commercial fish ponds, swamps, marshes or estuaries). Except when necessary to target areas where adult mosquitoes are present and weather conditions will facilitate movement of applied material away from the water in order to minimize incidental deposition into the water body.

PHYSICAL AND CHEMICAL HAZARDS

Do not use or store near heat or open flame. Do not use this product in or on electrical equipment due to the possibility of shock hazard.

DIRECTIONS FOR USE

It is a violation of Federal law to use this product in a manner inconsistent with its labeling.

APPLICATION RESTRICTIONS

Do not breathe vapors or spray mist.

Do not use in aircraft cabins.

Use in a handheld cold or thermal fogger is prohibited

Except when applying to livestock or wide area mosquito adulticide, do not apply this product in a way that will contact workers or other persons either directly or through drift.

Except when applying to livestock or as a wide area mosquito adulticide, only protected handlers may be in the area during application.

Do not apply when food is present.

WIDE AREA MOSQUITO CONTROL

For use by Federal, State, Tribal, or local government officials responsible for public health or vector control, or by persons certified in the appropriate category otherwise authorized by the State or Tribal lead pesticide regulatory agency to perform adult mosquito control applications, or by persons under their direct supervision.

APPLICATION INSTRUCTIONS.

Do not exceed 25 applications at 0.007 lb. permethrin per acre or 0.18 lb. of permethrin per acre in any given season. More frequent treatments may be made to prevent or control a threat to public and/or animal health determined by a State, Tribal or local health or vector control agency on the basis of documented evidence of disease causing agents in vector mosquitoes or the occurrence of mosquito-borne diseases in animal or human populations, or if specifically approved by the State or Tribe during a natural disaster recovery effort.

Apply when wind speed is greater than 1 m.p.h..

47

ACTIPERM 10% E.C.
MULTI-PURPOSE INSECTICIDE

Dossier page 4 of 6
Label unit 3 of 5

GENERAL

ACTIPERM 10% E.C. MULTIPURPOSE INSECTICIDE is designed for application as an Ultra-Low Volume (ULV) aerosol to control adult mosquitoes and flies in residential, industrial, urban, recreational and other areas where adult mosquitoes and flies are found. **ACTIPERM 10% E.C. MULTIPURPOSE INSECTICIDE** is also recommended for application with mist-blowers, backpack sprayers, handheld sprayers, and low pressure hand sprayers for barrier or surface applications. **ACTIPERM 10% E.C. MULTIPURPOSE INSECTICIDE** is used for control of annoyance flies and mosquitoes, mosquitoes and flies of public health or disease vector importance in areas such as but not limited to residential areas, industrial areas, urban areas, parks, campsites, woodlands, athletic fields, golf courses, playgrounds, recreational and overgrown waste areas, roadsides, and other areas where adult mosquitoes and flies occur. Apply at a rate not to exceed 0.007 pounds of permethrin per acre in any given 24 hour period.

In the treatment of corrals, feedlots, swine lots, poultry ranges and zoos cover any exposed drinking water, drinking fountains and animal feed before application.

ACTIPERM 10% E.C. MULTIPURPOSE INSECTICIDE provides effective control of adult mosquitoes, black flies, gnats, biting and non-biting midges, stable flies, horse flies, deer flies, sheep flies, horn flies, and nuisance flying insects such as houseflies.

Spray Droplet Size Determination

Ground Equipment:

Spray equipment must be adjusted so that the volume median diameter is less than 30 microns ($Dv\ 0.5 < 30\ \mu$) and that 90% of the spray is contained in droplets smaller than 50 microns ($0.9 < 50\ \mu$). Directions from the equipment manufacturer or vendor, pesticide registrant or a test facility using a laser-based measurement instrument must be used to adjust equipment to produce acceptable droplet size spectra. Application equipment must be tested at least annually to confirm that pressure at the nozzle and nozzle flow rate(s) are properly calibrated.

GROUND APPLICATION

Vehicle-Mounted ULV Cold Aerosol Generators or Vehicle-Mounted Non-Thermal Aerosol (Cold Fog) : Dilute 1 part concentrate with 1 part water or suitable oil solvent or at proportional oil dilutions calculated on the basis of vehicle speed and swath width to achieve the target dose. Apply through non-thermal ULV application equipment and base acreage calculations on the equipment manufacturer's recommended swath width. Apply at a rate not to exceed 0.007 pounds of permethrin per acre in any given 24 hour period. An optimum swath is created when **ACTIPERM 10% E.C. MULTIPURPOSE INSECTICIDE** is applied from a truck that is being driven perpendicular to the wind direction, Direct the spray head of equipment to ensure even distribution of the spray cloud throughout the area.

For best results, apply when insects are most active and meteorological conditions are conducive to keeping the spray cloud in the air column close to the ground. An inversion of air temperatures and a light breeze is preferable. Do not exceed 25 applications at 0.007 pounds of permethrin per acre (not to exceed a total of 0.18 pounds of permethrin per acre) in any given season. More frequent applications may be made to prevent or control a threat to public and / or animal health determined by a State, Tribal or local health or vector control agency on the basis of documented evidence of disease causing agents in vector mosquitoes or the occurrence of mosquito-borne disease in animal or human populations, or if specifically approved by the state or tribe during a natural disaster recovery effort. Application during the cooler hours of the night or early morning is recommended.

ACTIPERM 10% E.C. MULTIPURPOSE INSECTICIDE may be applied through ULV Cold Aerosol Generators, or other equipment designed for non-thermal aerosol applications.

GROUND APPLICATION (cont)

The desired application rate may be obtained under different conditions by altering the dilution rate of **ACTIPERM 10% E.C. MULTIPURPOSE INSECTICIDE**, the flow rate of the insecticide from the application equipment and the vehicle speed. Where dense vegetation is present, the use of higher rates and / or slower speeds is recommended.

BARRIER APPLICATIONS: For control and exclusion of resting or flying adult mosquitoes in areas such as animal quarters, roadsides, urban areas, residential areas, industrial areas, golf courses, parks, recreational areas, tire piles and all public areas where adult mosquitoes may occur. May be used to treat aggregation and harborage areas such as the perimeter of residential buildings, storage buildings, empty rail cars, truck transport trailers, abandoned buildings, and other areas where adult mosquitoes find harborage. For application to resting and / or aggregation surfaces using low pressure hand sprayers or other similar equipment which has demonstrated the capacity to deliver an even distribution of the labeled rate over the desired treatment area, mix 1 part concentrate with 1 part of water or suitable oil diluent and apply sufficient spray to dampen surface. For application using backpack or truck-mounted mistblower equipment, apply undiluted product at a rate not to exceed 38.6 fl. oz. of undiluted product per acre or diluted at a rate not to exceed 0.1 lb. a.i. per acre. Direct spray onto foliage at the perimeter of areas from which mosquitoes or flies are to be excluded or direct spray into harborage areas or resting areas where adult mosquitoes or flies may be found. When this product is applied as a barrier application using low pressure hand sprayers, hydraulic sprayers or ground ULV equipment, do not apply within 100 feet (30 meters) of lakes and streams.

Not for use in outdoor residential misting systems.

To prepare dilutions, the concentrate should first be stirred or agitated well. Add the required amount of concentrate to water or oil and blend thoroughly. Do not hold dilutions for more than 24 hours.

For maximum effectiveness, a combination of localized application and space treatment is recommended. Remove Pets, birds, and cover fish aquaria before spraying.

USE RESTRICTIONS FOR WIDE AREA MOSQUITO USE

Do not allow spray treatment to contaminate cropland or water supplies. Do not use on crops used for food or forage.

USE RESTRICTIONS FOR INDOOR USE

Except when making wide area mosquito adulticide applications or treating livestock do not apply this product in a way that will contact workers or other persons, either directly or through drift. Except when making wide area mosquito adulticide applications or treating livestock only protected handlers maybe in the area during application.

Do not breathe dusts, vapors, or spray mist.

For applications to food / feed handling and service areas:

Do not apply when food is present.

Do not use in food or food handling establishments, restaurants, or other areas where food is commercially prepared or processed. Do not use in serving areas while food is exposed or facility is in operation. Serving areas are areas where prepared foods are served, such as dining rooms, but excluding areas where foods may be prepared or held. In the home, all food processing surfaces

all utensils should be covered during treatment or thoroughly washed before use.

Exposed food should be covered or removed.

continued ----->

6/7

ACTIPERM 10 % E.C.
MULTI-PURPOSE INSECTICIDE

Dossier Page 5 of 6
Label unit 4 of 5

Do not apply indoors at residential sites, including, nurseries, day care centers, schools, hospitals, and nursing homes.

Not for broadcast use.

Application is prohibited directly into sewers or drains, or to any area like a gutter where drainage to sewers, storm drains, water bodies, or aquatic habitat can occur. Do not allow the product to enter any drain during or after application.

USE RESTRICTIONS FOR OUTDOOR AND ANIMAL QUARTERS USE

When used in dairy barns or facilities: Close milk bulk tank lids to prevent contamination from spray and from dead or falling insects. Remove or cover milking utensils before application. Wash teats of animals before milking.

All outdoor applications must be limited to spot or crack and crevice treatments only, except for the following permitted uses:

- (1) Treatment to soil or vegetation around structures.
 - (2) Applications to lawns, turf, and other vegetation.
 - (3) Applications to building foundations, up to a maximum height of 3 feet.
- Other than applications to building foundations, all outdoor applications to impervious surfaces such as sidewalks, driveways, patios, porches and structural surfaces (such as windows, doors, and eaves) are limited to spot and crack and crevice applications, only.
- Do not water the treated area to the point of runoff.
Do not make applications during rain.

INDOOR USE AREAS:

| | |
|------------------------|----------------------------|
| Bakeries | Industrial reinstallations |
| Beverage Plants | Kennels |
| Canneries | Meat Packing Plants |
| Flour Mills | Railroad Cars |
| Food Processing Plants | Ships' Holds |
| Grain Elevators | Truck Trailers |
| Granaries | Warehouses |

STORAGE AND DISPOSAL

Do not contaminate water, food or feed by storage or disposal.

PESTICIDE STORAGE AND SPILL PROCEDURES: Store upright at room temperature. Avoid exposure to extreme temperatures. In case of spill or leakage, soak up with an absorbent material such as sand, sawdust, fuller's earth, etc. Dispose of with chemical waste.

Pesticide disposal: Wastes resulting from the use of this product may be disposed of on site or at an approved waste disposal facility.

Container Disposal: Rigid non-refillable container small enough to shake, (i.e. with capacity equal to or less than 5 gallons container). Do not refill or reuse this container. Offer for recycling if available. Triple rinse or pressure rinse container (or equivalent) promptly after emptying. Triple rinse as follows:

Empty the remaining contents into application equipment or a mix tank and drain for 10 seconds after the flow begins to drip. Fill the container 1/4 with mineral oil and recap. Shake for 10 seconds. Pour rinsate into application equipment or a mix tank or store rinsate for later use or disposal. Drain for 10 seconds after the flow begins to drip. Repeat this procedure two more times. Then offer for recycling or reconditioning or puncture and dispose of in a sanitary landfill or incineration, or if allowed by State and Local authorities, by burning. If burned, stay out of smoke.

continued.....

f

STORAGE AND DISPOSAL (cont)

Rigid Nonrefillable containers that are too large to shake (i.e. with capacities greater than 5 gallons or 50 lbs.). Nonrefillable container. Do not reuse or refill this container. Offer for recycling, if available. Triple rinse or pressure rinse container (or equivalent) promptly after emptying. Triple rinse as follows: Empty the remaining contents into application equipment or a mix tank. Fill the container 1/4 full with mineral oil. Replace and tighten closures. Tip container on its side and roll it back and forth, ensuring at least one complete revolution, for 30 seconds. Stand the container on its end and tip it back and forth several times. Empty the rinsate into application equipment or a mix tank or store rinsate for later use or disposal. Repeat this procedure two more. Then offer for recycling or reconditioning or puncture and dispose of in a sanitary landfill or incineration, allowed by State and Local authorities, by burning. If burned, stay out of smoke.

Refillable container. Refill this container with pesticide only. Do not reuse this container for any other purpose. Cleaning the container before final disposal is the responsibility of the person disposing of the container. Cleaning before refilling is the responsibility of the refiller. To clean the container before final disposal, empty the remaining contents from this container into application equipment or mix tank. Fill the container about 10 percent full with mineral oil. Agitate vigorously or recirculate mineral oil with the pump for 2 minutes. Pour or pump rinsate into application equipment or rinsate collection system. Repeat this rinsing procedure two more times. Then offer for recycling or reconditioning or puncture and dispose of in a sanitary landfill or incineration, or if allowed by State and local authorities, by burning. If burned, stay out of smoke.

PRODUCT BATCH CODE NUMBER: _____

IMPORTANT " READ BEFORE USE

Read the entire Directions for Use, Conditions, Disclaimer of Warranties and Limitations of Liability before using this product. If terms are not acceptable, return the unopened product container at once.

By using this product, user or buyer accepts the following Conditions, Disclaimer of Warranties and Limitations of liability.

CONDITIONS: The directions for use of this product are believed to be adequate and must be followed carefully. However, it is impossible to eliminate all risks associated with the use of this product, Crop injury, ineffectiveness or other consequences may result because of such factors such as weather conditions, presence of other materials, or the manner of use or application, all of which are beyond the control of GIL MFG. INC. All such risks shall be assumed by the user or buyer.

DISCLAIMER OF WARRANTIES: TO THE EXTENT CONSISTENT WITH APPLICABLE LAW, GIL MFG. CO. INC., MAKES NO OTHER WARRANTIES, EXPRESS OR IMPLIED, OF MERCHANTABILITY OR FITNESS FOR A PARTICULAR PURPOSE OR OTHERWISE, THAT EXTEND BEYOND THE STATEMENTS MADE ON THIS LABEL. No agent of GIL MFG. CO., INC. is authorized to make any warranties beyond those contained herein or modify the warranties contained herein. TO THE EXTENT WITH APPLICABLE LAW, GIL MFG. CO., INC. DISCLAIMS ANY LIABILITY WHATSOEVER FOR SPECIAL, INCIDENTAL OR CONSEQUENTIAL DAMAGES RESULTING FROM THE USE OR HANDLING OF THIS PRODUCT.

LIMITATIONS OF LIABILITY: TO THE EXTENT CONSISTENT WITH APPLICABLE LAW, THE EXCLUSIVE REMEDY OF THE USER OR BUYER FOR ANY AND ALL LOSSES, INJURIES OR DAMAGES RESULTING FROM THE USE OR HANDLING OF THIS PRODUCT, WHETHER IN CONTRACT, WARRANTY, TORT, STRICT LIABILITY OR OTHERWISE, SHALL NOT EXCEED THE PURCHASE PRICE PAID FOR AT GIL MFG. CO. INC.'S ELECTION, THE REPLACEMENT OF PRODUCT.

7/7

ACTIPERM 10% E.C.
MULTI-PURPOSE INSECTICIDE

Dossier Page 6 of 6
Label unit 5 of 5

APPLICATION SITES

LIVESTOCK SPRAY

For Dairy & Beef Cattle, Sheep, Goats, Swine, Horses and Poultry. For Swine do not ship for slaughter until 5 days after the last treatment. May be used in the same manner on endangered adult wild animal species such as deer and buffalo being preserved and protected in "Animal Preservation Facilities" such as Zoos. See GENERAL section on this label.

For Horn Flies, House Flies, Mosquitoes and Gnats mix 1.3 ounce of this product in 1 gallon of water and apply to wet the animal's body thoroughly, with particular attention to topline, underline flanks, withers and other infested areas. Repeat treatment at intervals of 5 to 12 days for small insect populations or as needed, when flies are emerging in large numbers.

For Stable Flies, Horse Flies and Deer Flies mix 1.3 ounces of this product in 1 gallon of water and apply a quart per large adult animal to wet the body thoroughly with particular attention to the legs, flanks, barrel, topline and other body areas commonly attacked by these Flies. Repeat daily as needed.

For Face Flies mix 1.3 ounces of this product in 1 gallon of water. Apply using spray which produces large wetting droplets. Apply to the face of the animal in the morning before release to pasture. Apply sufficiently to wet the face but not more than 1.5 ounce per animal. Repeat daily as needed.

For Sheep Ticks and Keds mix 1.3 ounces of this product in 1 gallon of water and thoroughly wet all portions of the body by dipping or by spraying with sufficient pressure and with a nozzle adjustment to give penetration of the wool.

Fleas on livestock. To kill and protect from reinfestation, mix 6.5 fluid ounces in 1 gallon of water. Wet the animal by dipping or spraying.

AS A SPACE SPRAY:

LIVESTOCK PREMISES:

Barns, Milking parlors, Milk rooms, Dairies, Poultry Houses, Swine and Livestock Housing.

For Fleas, Mosquitoes and Gnats.

Apply as a fog or a fine mist directing the spray toward the ceiling and upper corners until the areas is filled with mist, using about 2 ounces per 1,000 cubic feet of space.

For best results close doors and windows before spraying and keep them closed for ten to fifteen minutes. Vacate the areas and ventilate before reoccupying. Repeat treatment daily as needed.

AS A SPACE SPRAY:

BAKERIES, BEVERAGE PLANTS, CANNERIES, FLOUR MILLS, FOOD PROCESSING PLANTS, GRAIN ELEVATORS, GRANARIES, INDUSTRIAL INSTALLATIONS, KENNELS, MEAT PACKING PLANTS, RAILROAD CARS, SHIPS' HOLDS, TRUCK TRAILERS, WAREHOUSES:

Apply with mechanical or compressed air equipment (non-thermal) adjusted to deliver a fine mist. Close doors and windows and shut off ventilating systems. When using an oil dilution for space spraying extinguish all flames and pilot lights when applying.

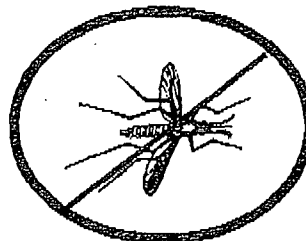
For rapid control of House flies, Fruit Flies, Gnats, Mosquitoes, Skipper Flies, Wasps, Hornets, Bees, Black flies, Small Flying Moths, direct the spray at an upward angle distributing uniformly through the entire area at a rate of 1 ounce per 1,000 cubic feet of space. Keep area closed for at least 10 minutes, Vacate areas after treatment and ventilate and sweep up dead insects before reoccupying. For rapid kill of exposed or accessible stages of other insects named on this label apply using conventional mechanical or compressed air equipment. (nonthermal) following direction for "AS A SPACE SPRAY".

The following section is an Optional section for this product label based on the availability of the GIL MFG. INC HOSE-END SPRAYER.

HOSE-END SPRAYER

If a "Hose-end-Sprayer" is used to control listed insects apply to surfaces in dairies, barns, feed lots, stables, poultry houses, swine and livestock housing to control house flies, stable flies and other manure breeding flies. Also aids in the control of cockroaches, ants, spiders and mosquitoes, crickets, and animal face flies. Walk and spray at a steady pace. Spray walls and surfaces thoroughly but do not allow spray runoff to occur. Treat no more than once in 2 weeks. Do not contaminate animal feed or water by spray.

OPTIONAL printing of "PERSONAL PROTECTIVE EQUIPMENT (PPE) DIAGRAMS



OPTIONAL INSECT PICTURES

