



U.S. ENVIRONMENTAL PROTECTION AGENCY
 Office of Pesticide Programs
 Registration Division (7505C)
 1200 Pennsylvania Ave., N.W.
 Washington, D.C. 20460

EPA Reg. Number:

11930-7

Date of Issuance:

JUL 31 2009

NOTICE OF PESTICIDE:

Registration
 Reregistration

(under FIFRA, as amended)

Term of Issuance:
Conditional

Name of Pesticide Product:
Pyrifos Mist ULV 2 E.C.

Name and Address of Registrant (include ZIP Code):

Gil Manufacturing
 P.O. Box 242725
 (5975 Troy Highway)
 Montgomery, Alabama 36124

Note: Changes in labeling differing in substance from that accepted in connection with this registration must be submitted to and accepted by the Registration Division prior to use of the label in commerce. In any correspondence on this product, always refer to the above EPA registration number.

On the basis of information furnished by the registrant, the above named pesticide is hereby registered/reregistered under the Federal Insecticide, Fungicide and Rodenticide Act.

Registration is in no way to be construed as an endorsement or recommendation of this product by the Agency. In order to protect health and the environment, the Administrator, on his motion, may at any time suspend or cancel the registration of a pesticide in accordance with the Act. The acceptance of any name in connection with the registration of a product under this Act is not to be construed as giving the registrant a right to exclusive use of the name or to its use if it has been covered by others.

This product is conditionally registered in accordance with FIFRA section 3(c)(7)(A) provided that you:

1. Submit and/or cite all data required for registration/reregistration review of your product when the Agency requires all registrants of similar products to submit such data.
2. Revise the EPA Registration Number to read: 11930-7.

Signature of Approving Official:

Date:

JUL 31 2009

John Hebert, Product Manager (07)
 Insecticide-Rodenticide Branch, Registration Division (7505C)

3. Submit the results of corrosion and storage stability within one year from the date of this letter.
4. Submit one copy of the revised final printed label for the record before you release the product for shipment.

If these conditions are not complied with, the registration will be subject to cancellation in accordance with FIFRA section 6(e). Your release for shipment of the product constitutes acceptance of these conditions.

A stamped copy of the label is enclosed for your records.

Enclosure

3/5

Pyrifos Mist ULV 2 E.C.

For Use Outdoors to Control Adult Mosquitoes in Residential and Recreational, and other Noncropland Areas. For application only by Federal, State, Tribal, Military, or local government officials responsible for public health vector control or by persons certified in the appropriate category or otherwise- authorized by the state or tribal pesticide regulatory agency to perform adult mosquito control applications, or by persons under their direct supervision. An emulsifiable concentrate used to control adult mosquitoes as a ULV spray.

ACCEPTED
With COMMENTS
In EPA Letter Dated:
JUL 31 2009

Under the Federal Insecticide, Fungicide,
and Rodenticide Act, As amended,
pesticide Registered under EPA Reg. No. 11930-7

Active Ingredient:
 Chlorpyrifos;
 [O,O-diethyl 0-(3,5,6,-trichloro-2-pyridyl) phosphorothioate].... 24.60%
 Other Ingredients 75.40%
 Total 100.00%

(*Contains petroleum distillates Contains 2 pounds chlorpyrifos per gallon

WARNING
KEEP OUT OF REACH OF CHILDREN

EPA Reg. No. 11930-T - EPA Est. No. 11930-AL-1

FIRST AID

Have product container or label with you when calling a poison control center or doctor, or going for treatment. For Medical Emergencies call the International Poison Control Center at 1-800-214-7753.

IF SWALLOWED: Immediately call a poison control center or doctor. Do not induce vomiting unless told to do so by a poison control center or doctor. Do not give any liquid to the Person. Do not give anything by mouth to an unconscious person.

IF IN EYES: Hold eye open and rinse slowly and gently with water for 15-20 minutes. Remove contact lenses, if present, after the first 5 minutes, then continue rinsing the eye. Call a poison control center or doctor for treatment advice.

IF ON SKIN OR CLOTHING: Take off contaminated clothing. Rinse skin immediately with plenty of water for 15-20 minutes. Call a poison control center or doctor for treatment advice.

IF INHALED: Move person to fresh air. If person is not breathing, call 911 or an ambulance, then give artificial respiration, preferably mouth-to-mouth. Call a poison control center or doctor for further treatment advice.

NOTE TO PHYSICIAN: Chlorpyrifos is a cholinesterase inhibitor. Treat symptomatically. Atropine is antidotal. 2-PAM may be effective as an adjunct to atropine. This product contains petroleum distillate. Vomiting may cause aspiration pneumonia.

HOT LINE NUMBER: Have the product container or label with you when calling a poison control center or doctor, or going for treatment. You may also call 1-800-858-7378 for emergency medical treatment advice.

PRECAUTIONARY STATEMENTS

HAZARDS TO HUMANS AND DOMESTIC ANIMALS

WARNING: May be fatal if swallowed. Causes substantial but temporary eye injury. Harmful if absorbed through the skin or inhaled. Do not get in eyes, on skin or on clothing. Avoid breathing vapor or spray mist. Prolonged or frequently repeated skin contact may cause allergic reactions in some individuals. Wear long sleeved shirt and long pants, socks, shoes, goggles, or face shield and chemical resistant gloves, (such as made out of barrier, laminate Viton, selection category G).

***PERSONAL PROTECTIVE EQUIPMENT (PPE):** All mixers, and loaders, involved in ground application must wear coveralls over long-sleeved shirt and long pants, shoes plus socks, chemical-resistant gloves, (such as made out of barrier, laminate Viton, selection category G) and a NIOSH approved dust mist filtering respirator with MSHA / NIOSH approval number prefix TC-21C or a NIOSH approved respirator with any R,F, or HE filter. Applicators involved in ground ULV application must use an enclosed cab as described in the Engineering Controls section of this label and must wear long sleeved shirt and long pants, shoes plus socks, and chemical resistant gloves. Aerial applicators and pilots must use an enclosed cockpit and wear long-sleeved shirt, long pants, shoes and socks.

ENGINEERING CONTROLS : Ground applicators must use an enclosed cab that has a nonporous barrier that totally surrounds the occupants and prevents contact with pesticides outside the cab. Applicators must be provided and have immediately available for use in an emergency when they must exit the cab in the treated area; coveralls, chemical -resistant gloves and a respirator of the type specified in the PPE section of this labeling. Take off any PPE that was worn in the treated area before reentering the cab and store all such PPE in a chemical-resistant container, such as a plastic bag, to prevent contamination of the inside of the cab.

Mixers and loaders involved in aerial application must use a closed system designed by the manufacturer to enclose the pesticide to prevent it from contacting handlers or other people and which is used and maintained in accordance with the manufacturer's written operating instructions. Mixers and loaders using a closed system must wear protective eyewear if the system operates under pressure, and must have immediately available for use in an emergency, such as a broken package, spill, or equipment breakdown; coveralls, chemical resistant gloves, chemical resistant footwear, chemical resistant apron and a respirator of the type specified in the PPE section on this labeling.

User safety requirements: Follow manufacturer's instructions for cleaning / maintaining PPE. If no such instructions for washables exist, use detergent and hot water. Keep and wash [PPE separate from other laundry. Discard clothing and other absorbent materials that have been drenched or heavily contaminated with this product's concentrate. Do not reuse them.

USER SAFETY RECOMMENDATIONS: Users should wash hands before eating, drinking, chewing gum, using tobacco or using the toilet. Users should remove clothing PPE immediately if pesticide gets inside. Then wash thoroughly and put on clean clothing. Users should remove PPE immediately after handling this product. Wash the outside of gloves before removing. As soon as possible, wash thoroughly and change into clean clothing.07-07-09.

NET CONTENTS: 55 Gallons

Gil Manufacturing, Inc.

P.O. Box 242725 / 5975 Troy Hiway- Montgomery, AL 36124 U.S.A.

Pyrifos Mist ULV 2 E.C.

Label unit 2 of 3
Page 5 of 6

ENVIRONMENTAL HAZARDS

This pesticide is toxic, to fish, aquatic invertebrates, small mammals and birds. Runoff from treated areas or deposition of spray droplets into a body of water may be hazardous to fish and aquatic invertebrates: Do not apply over bodies of water (lakes, rivers, permanent streams, natural ponds, commercial fish ponds, swamps, marshes or estuaries), except when necessary to target areas where adult mosquitoes are present, and weather conditions will facilitate movement of applied material beyond the body of water in order to minimize incidental deposition into the water body. Do not contaminate bodies of water when disposing of equipment rinsate or washwaters.

BEE WARNING: This product is highly toxic to bees exposed to direct treatment or residues on blooming crops or weeds. Do not apply this product or allow it to drift to blooming crops or weeds if bees are visiting the treatment area, except when applications are made to prevent or control a threat to public and / or animal health, determined by a state, tribal or local health or vector control agency on the basis of documented evidence of disease causing agents in vector mosquitoes, or the occurrence of mosquito borne disease in animal or human populations, or if specifically approved by the State or Tribe during a natural disaster recovery effort.

PHYSICAL OR CHEMICAL HAZARDS

Combustible. Do not use or store near heat or open flame.

DIRECTIONS FOR USE

It is a violation of Federal Law to use this product in a manner inconsistent with its labeling. For application only by Federal, State, Tribal, Military, or local government officials responsible for public health vector control, or by persons certified in the appropriate category or otherwise- authorized by the state or tribal lead pesticide regulatory agency to perform adult mosquito control applications, or by persons under their direct supervision. An emulsifiable concentrate used to control adult mosquitoes as a ULV spray. Before making the first application in a season, it is advisable to consult with the State or Tribal agency with primary responsibility for pesticide regulation to determine if other regulatory requirements exist.

PYRIFOS MIST ULV 2 E.C. is formulated for adult mosquito control in outdoor residential, recreational and other non-cropland areas. For best results treat when mosquitoes are most active and weather conditions are conducive to keeping the spray cloud close to the ground. An inversion of air temperatures and a light breeze are preferable. Application in calm air conditions is to be avoided. Apply only when ground wind speed is greater than 1 m.p.h.. Air temperatures should be greater than 50°F when conducting applications.

This product may be applied undiluted or diluted with a suitable diluent such as a high grade mineral oil and applied accordingly by air or ground as long as the maximum rate of active ingredient per acre does not exceed 0.01 pound. Do not treat a site with more than 0.01 pound of chlorpyrifos per acre in a twenty-four hour period. Do not exceed 0.26 pounds of chlorpyrifos per acre, per year. More frequent applications may be made to prevent or control a threat to public and/or animal health determined by a state, tribal, or local health or vector control agency on the basis of documented evidence of disease causing agents in vector mosquitoes or the occurrence of mosquito-borne disease in animal or human populations, or if specifically approved by the state or tribe during a natural disaster recovery effort.

Do not contaminate food or feed products. Do not allow spray treatment to drift onto pastureland, cropland, poultry ranges, or potable water supplies. Do not use on crops for food, forage or pasture. In treatment of corrals, feed lots, swine lots, and zoos, cover any exposed drinking water, drinking water fountains and animal feed before application.

SPRAY DROPLET SIZE DETERMINATION

Ground-based Application: For application as an ultra low volume (ULV) nonthermal aerosol (cold fog), spray equipment must be adjusted so that the volume median diameter (VMD) is between 8 and 30 microns ($8 \leq D_v 0.5 \leq 30$ microns) and that 90% of the spray is contained in droplets smaller than 50 microns ($D_v 0.9 < 50$ microns). Directions from the equipment manufacturer or vendor, pesticide registrant or a test facility using a laser-based measurement instrument must be used to adjust equipment to produce acceptable droplet size spectra. Application equipment must be tested at least annually to confirm that pressure at the nozzle and nozzle flow rate(s) are properly calibrated.

AERIAL APPLICATION: Spray equipment must be adjusted so that the volume median diameter produced is less than 60 microns ($D_v 0.5 < 60$ microns) and that 90% of the spray is contained in droplets smaller than 115 microns ($D_v 0.9 < 115$ microns). The effects of flight speed and, for non-rotary nozzles, nozzle angle on the droplet size spectrum must be considered. Directions from the equipment manufacturer or vendor, pesticide registrant or a test facility using a wind tunnel and laser-based measurement instrument must be used to adjust equipment to produce acceptable droplet size spectra. Application equipment must be tested at least annually to confirm that pressure at the nozzle and nozzle flow rate(s) are properly calibrated.

GROUND ULV APPLICATION

ULV Nonthermal Aerosol (Cold Fog) Application: Apply **PYRIFOS MIST ULV 2 E.C.** through standard ULV cold aerosol or non-thermal aerosol (Cold Fog) generators undiluted at a flow rate of 2.0 to 4.3 fluid ounces per minute at an average vehicle speed of 10 m.p.h.. This is equivalent to 0.005 to 0.01 pound of chlorpyrifos per acre based on an effective swath width of 300 feet. If a different vehicle speed is used, adjust rate accordingly. An accurate flow meter must be used to ensure the proper flow rate.

Apply Pyrifos mist ULV 2 E.C. undiluted					
Chlorpyrifos	Application Rate (Fl. oz. per minute)				Fl. oz. per acre
pounds per acre	5mph	10mph	15 mph	20 mph	
0.01	2.15	4.30	6.45	8.60	0.71
0.005	1.00	2.00	3.00	4.00	0.33

For proper application, mount the applicator so that the nozzle is at least 4½ feet above ground level and directed out the back of the vehicle. Failure to follow the above directions may result in reduced effectiveness.

Dilute 1 to 3 Pyrifos mist ULV = ¾ oz. in 2-¼ ozs. water.					
Chlorpyrifos	Application Rate (Fl. oz. per minute)				Fl. oz. per acre
pounds per acre	5mph	10mph	15 mph	20 mph	
0.01	8.60	18.00	27.00	36.00	2.85
0.005	4.50	8.00	12.00	16.00	1.32

AERIAL APPLICATION

PYRIFOS MIST ULV 2 E.C. may be applied undiluted at rates up to 0.71 fluid ounces per acre (equal to 0.01 pound of chlorpyrifos per acre) by fixed wing or rotary aircraft equipped with Suitable ULV application equipment. Aerial application shall be made at altitudes ranging from 75 to 300 feet.

IN FLORIDA: Not for aerial application in Florida unless specifically authorized by the Bureau of Entomology, Florida Department of Agriculture & Consumer Services.

STORAGE AND DISPOSAL

Do not contaminate water, food or feed by storage or disposal.
PESTICIDE STORAGE: Store product in its original labeled container in a cool, dry, locked place designated for such insecticides and out of reach of children. Do not expose to extreme temperatures. In case of spillage, soak up with absorbent material such as sawdust, or fullers earth; sweep up and place in a labeled container and dispose of as follows. **PESTICIDE DISPOSAL:** Wastes resulting from the use of this product may be disposed of on site or at an approved wastes disposal facility. **CONTAINER DISPOSAL:** Nonrefillable container. Do not reuse or refill this container. Offer for reconditioning if appropriate. Clean container promptly after emptying: (Metal) **Triple rinse** or equivalent. Then offer for recycling or reconditioning or puncture and dispose of in a sanitary landfill or by other approved State and local procedures. (Plastic) **Triple rinse** or equivalent. Then offer for recycling or reconditioning or puncture and dispose of in a sanitary landfill or incineration, or if allowed by State and local authorities, by burning. If burned, stay out of smoke. **Triple rinse as follows:** Empty the remaining contents into application equipment or a mix tank. Fill the container ¼ full with water. Replace and tighten closures. Tip container on its side and roll it back and forth, ensuring at least one complete revolution, for 30 seconds. Stand the container on its end and tip it back and forth several times. Empty the rinsate into application equipment. 07-06-09.

PRODUCT BATCH CODE NO. _____

Gil Manufacturing, Inc.

P.O. Box 242725 - Montgomery, AL 36124 - U.S.A.

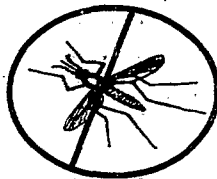
Product Warranty Statement

"Read the entire Directions for Use, Conditions, Disclaimer or Warranties, and limitations of Liability before using this product. Disclaimer of Warranties and limitations of Liabilities. CONDITIONS: The directions for use of this product are believed to be adequate and must be followed carefully. However, it is impossible to eliminate all risks associated with the use of this product. Injury, ineffectiveness, or other unintended consequences may result because of such factors as weather conditions, presence of other materials, or the manner of use of application, all of which are beyond the control of GIL Mfg. Co. Inc. To the extent consistent with applicable law, all such risks shall be assumed by the user or buyer.

DISCLAIMER OF WARRANTIES:

To the extent consistent with applicable law, there are no warranties, express or implied, of merchantability or of fitness for a particular use, or otherwise, which extend beyond the statements made on this label. No agent of GIL Mfg., Inc. is authorized to make any warranties beyond those contained herein.

To the extent consistent with applicable law, GIL Mfg., Inc. disclaims any liability whatsoever for special, incidental, or consequential damages resulting from the use or handling of this product, whether in contract warranty, tort, negligence, strict liability or otherwise shall not exceed the purchase price, or at GIL Mfg., Inc.'s option, the replacement of the product.



Gil Manufacturing, Inc.

P.O. Box 242725 / 5975 Troy Hiway- Montgomery, AL 36124 U.S.A.