



# AQUA-SECT

Flying & Crawling  
Insect Killer

FOR INDUSTRIAL USE ONLY

Kills Common Pests:

House Flies, Mosquitoes,  
Cockroaches, & Others Listed  
On Back Panel.

#### ACTIVE INGREDIENTS

Tetramethrin [N-(hydroxymethyl)-1-cyclohexene-1,2-dicarboximide 2,2-dimethyl-3-(2-methylpropenyl)cyclopropanecarboxylate]	250%
*3-Phenoxybenzyl d-cis and trans**2,2-dimethyl-3-(2-methylpropenyl)cyclopropane-carboxylate	143%
*Other isomers	007%
Petroleum distillate	9250%
<b>INERT INGREDIENTS:</b>	<b>90350%</b>
	<b>100000%</b>

\*d-(cis, trans) phenothrin  
cis, trans isomer ratio: max 25% (+ or -) cis  
min 75% (+ or -) trans

EPA Reg. No. 11694-77

EPA Est. No. 11694-KS-1

Net Weight: One Pound

**CAUTIONS:** KEEP OUT OF REACH OF CHILDREN  
CONTENTS UNDER PRESSURE  
SEE BACK PANEL FOR FURTHER PRECAUTIONS

SHAKE BEFORE USE.  
HOLD CONTAINER UPRIGHT.  
APPLY IN SHORT BURSTS.

#### DIRECTIONS

**To Kill Flies, Mosquitoes, Small Flying Moths and Gnats:** Close all doors and windows and direct spray upward into center of room with a slow sweeping motion. Spray 5-10 seconds for average room. Keep room closed for 15 min. After spraying ventilate room thoroughly before re-entry. Sweep up and destroy fallen insects.

**To Kill Cockroaches, Ants and Crickets:** Contact as many insects as possible with the spray in addition to thorough spraying of all parts of the room suspected of harbouring these pests. Special attention should be paid to cracks, hidden surfaces under sinks, behind stoves and refrigerators, food storage areas and wherever these pests are suspected of hiding. To kill ants, treat doors, around window frames, ant trails and other areas of entry. Repeat as necessary.

**To Kill Carpet Beetles:** Directly spray as many insects as possible. Spray both interior and exterior of upholstered furniture. Both top and bottom of rugs and carpets should be sprayed thoroughly. Also treat shelves, closets, areas under furniture and wherever these insects are seen or suspected. Repeat as necessary.

**To Kill Exposed Forms of Confused Flour Beetles, Sawtoothed Grain Beetles and Rice Weevils:** Find and destroy infested package goods. Remove all other items from pantry. Spray the shelves to kill any of the named insects present. Place clean paper on the shelves and return packages after shelves have dried. Repeat as necessary.

**To Kill Sowbugs, Centipedes, Firebrats and Spiders:** Contact as many insects as possible with the spray. Also thoroughly spray all parts of the room suspected of harbouring these pests. Special attention should be paid to cracks, crevices, hidden surfaces under sinks, behind stoves and refrigerators.

**To Kill Fleas and Brown Dog Ticks:** Remove and destroy old pet bedding. Spray sleeping quarters of pets around baseboards, window and door frames, wall cracks and focal areas of floors. Repeat as necessary. Do not spray animals. Put fresh bedding in pets quarters after spray has dried. Also treat dogs and cats with a registered flea and tick control product before allowing them to enter treated area.

#### CAUTION

Harmful if swallowed or absorbed through skin. Avoid breathing vapors. Avoid contact with skin. In case of contact immediately flush skin with plenty of water.

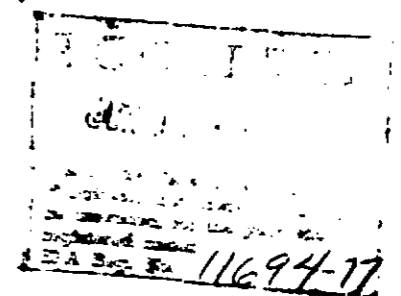
Do not use in commercial food processing or preparation areas. In the home, all food processing surfaces, exposed food and utensils should be covered during treatment or thoroughly washed before use.

Remove pets, birds and cover fish aquariums before spraying. Contents under pressure. Do not use or store near heat or open flame. Do not puncture or incinerate container. Exposure to temperatures above 130°F may cause bursting.

#### STORAGE AND DISPOSAL

**Storage:** Store in a cool area away from heat or open flame.  
**Disposal:** Do not reuse empty container. Wrap container and put in trash collection.

For Use Only in Non-Food Areas of Industrial Buildings.



**DYMON, INC.**

KANSAS CITY, KANSAS 64106