

Nuts!..to Nut Grass!

TERM-X

Lawn Weed Spotter

CONTROLS

- NUT GRASS
- JOHNSON GRASS
- DALLIS GRASS
- SAND BURS

READY TO USE - NO MIXING

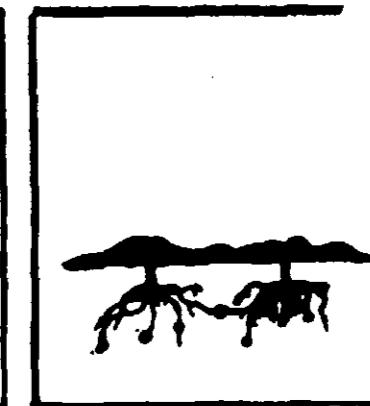
CAUTION: KEEP OUT OF REACH OF CHILDREN.
See side panels for additional cautions.



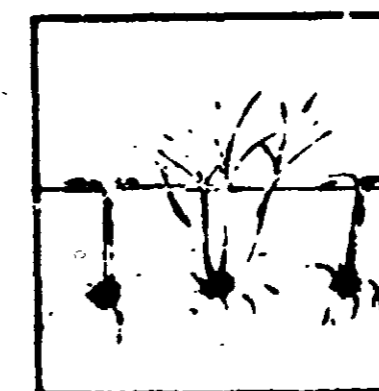
NUT GRASS



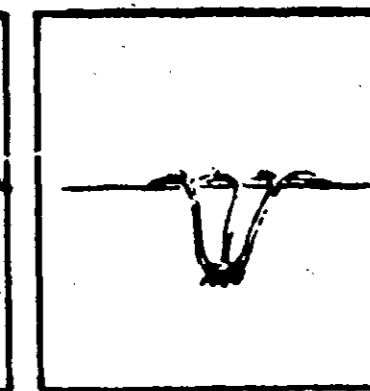
Before application



After 1st Application



10-20 days after 1st application treat when regrowth are 2-3 inches high



Final Application

Also, treat sand burs when they are two (2) to three (3) inches high.

ACTIVE INGREDIENTS:

2,4-Dichlorophenoxyacetic Acid
Alkanolamine Salts (of the
Ethanol and Isopropanol Series) *
Monosodium Acid Methanearsonate

1.46%
2.43%
96.11%

INERT INGREDIENTS:

* Equivalent to 0.94% 2,4
Dichlorophenoxyacetic Acid
Total Arsenic (as Elemental)
ALL IN Water Soluble Form 1.1%

100.00%



Puma Chemical Company

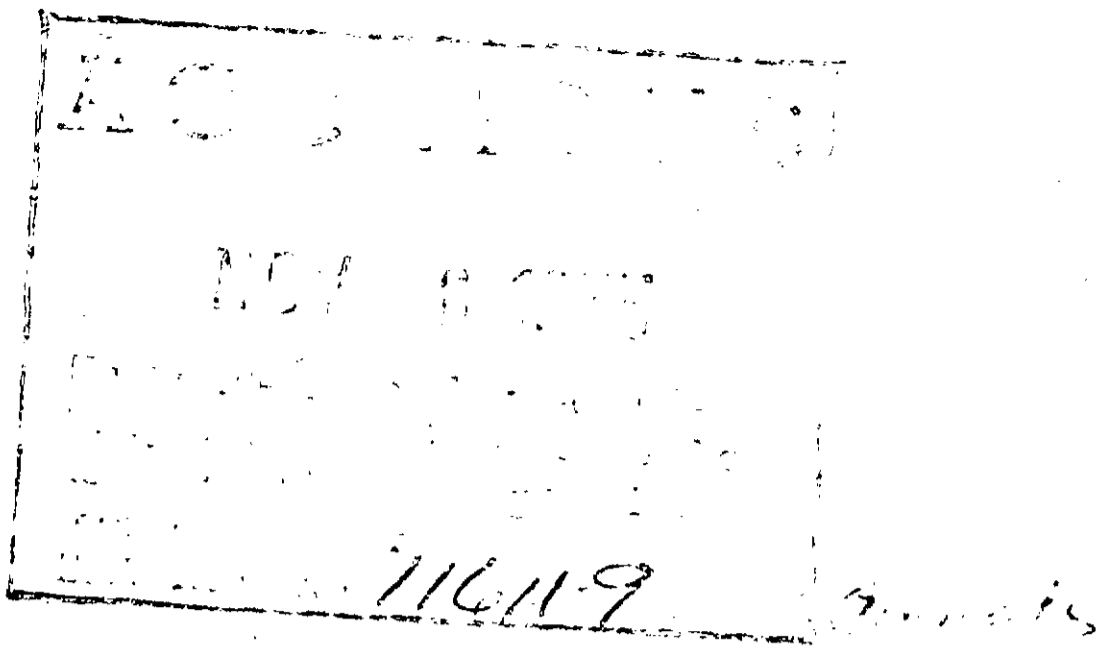
3012 SOUTH MAIN - 926-9141
FORT WORTH, TEXAS 76110

Net Contents: 64 Fl. oz. (2 qts.)

EPA REG. NO. 11611-6 EPA-EST. NO. 11611-TX-01

PTED

1974
FEDERAL INSECTICIDE
RODENTICIDE ACT
POISON REGISTER



**NEW
IMPROVED**

*For Top Killing Nut Grass in St. Augustine Grass, apply two to three drops of undiluted Termicide 5-15 to the center of each sprig through the applicator top.

NOTICE Buyer assumes all risks of use, storage or handling of this material not in strict accordance with directions given herewith. If product is stored at low temperatures, freezing may result. On warming to room temperature, the product redissolves, and may be used with no loss of effectiveness. Do not reuse container. Destroy when empty.

DIRECTIONS FOR USE Determine the area to be treated and prepare the solution accurately.

Dilute Termicide 5-15 to the proper volume and mix thoroughly.

Apply to a measured area using any kind of sprayer, according to the following:

SPRING AND FALL APPLICATION Mix 7 ounces of Termicide 5-15 with water to make 3.5 gallons of spray and apply to 700 square feet (or 1 pint to 8 gallons for 1600 square feet). Repeat once or twice at 1 week intervals.

MID-SUMMER APPLICATION Mix 3 ounces of Termicide 5-15 with water to make 4.5 gallons of spray and apply to 1000 square feet (or 1 pint with 10 gallons for 2000 square feet). Repeat once or twice at 1 week intervals.

Net Contents 1 Quart

ACCEPTED WITH COMMENTS



...for your lawn

CONTROLS

**TOP-KILLS NUT GRASS AND
JOHNSON GRASS SEEDLINGS
KILLS DALLIS GRASS
DANDELION, PLANTAIN
CHICKWEED, SANDBURS**

FOR USE ON ESTABLISHED LAWNS

CAUTION

KEEP OUT OF REACH OF CHILDREN

See Side Panels for Additional Precautions

ACTIVE INGREDIENTS

2,4-Dichlorophenoxyacetic Acid
Alkanolamine Salts (of the
Ethanol and Isopropanol Series) * 5.30%
Monosodium Acid Methanearsonate 8.87%
INERT INGREDIENTS 87.83%
* Equivalent to 3.43%
2,4-Dichlorophenoxyacetic Acid 100.00%
Total Arsenic (as Elemental)
ALL IN-Water Soluble Form 4.1%



EPA Registration No. 11611-9
EPA EST NO. 11611-TX-01

CAUTION Harmful if swallowed. Avoid contact with skin, eyes, and nose. Avoid breathing mist. Wash thoroughly after using. Store in a safe place away from feed and food products, fertilizers, seeds, insecticides, or fungicides. Do not contaminate waters used for domestic or irrigation purposes. Keep children and domestic animals off treated areas until the material is washed into the soil. Do not allow spray to drift into contact with trees, ornamental plants, or vegetable gardens. Typical 2,4-D injury is liable to result from such misapplication. Coarse sprays are less likely to drift.

WASH EQUIPMENT AFTER USE with an active detergent followed by a rinse with 1% ammonia solution.

GENERAL INFORMATION Use Termicide 5-15 on established lawns for the selective control of Dallis Grass, Dandelions, Plantain, Chickweed, Sandburs, Johnson Grass Seedlings, and for the top kill of Nut Grass.

Good soil moisture will give best results. Water before application if soil is dry. Bermuda lawns may be sprayed without harming the Bermuda grass and Kentucky blue grass.

CAUTION Bent, Fescue, St. Augustine, and Carpet grasses may be injured, and Dichondra will be killed if sprayed. In these lawns the spot applicator may be used effectively.

Do not use on St. Augustine except as noted (top of left panel).

PUMA CHEMICAL COMPANY

3012 South Main
Fort Worth, Texas 76110
Phone: 817/926-9141