



UNITED STATES ENVIRONMENTAL PROTECTION AGENCY
WASHINGTON, DC 20460

OFFICE OF CHEMICAL SAFETY
AND POLLUTION PREVENTION

March 5, 2019

OAT Agrico Co., Ltd.
1-3-1 Kanda Ogawa-Machi
Chiyoda-Ku, Tokyo 101-0052
c/o Lisa Setliff
Landis International, Inc.
P.O Box 5126
Valdosta, GA 31603-51126

Subject: Label Amendment – Revise coveralls placement from PPE section to Agricultural Use Requirements box
Product Name: Gatten
EPA Registration Number: 11581-6
Application Date: 11/28/2018
Decision Number: 547003

Dear Mrs. Setliff:

The amended label referred to above, submitted in connection with registration under the Federal Insecticide, Fungicide and Rodenticide Act, as amended, is acceptable. This approval does not affect any conditions that were previously imposed on this registration. You continue to be subject to existing conditions on your registration and any deadlines connected with them.

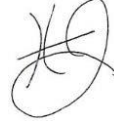
A stamped copy of your labeling is enclosed for your records. This labeling supersedes all previously accepted labeling. You must submit one copy of the final printed labeling before you release the product for shipment with the new labeling. In accordance with 40 CFR 152.130(c), you may distribute or sell this product under the previously approved labeling for 18 months from the date of this letter. After 18 months, you may only distribute or sell this product if it bears this new revised labeling or subsequently approved labeling. "To distribute or sell" is defined under FIFRA section 2(gg) and its implementing regulation at 40 CFR 152.3.

Should you wish to add/retain a reference to the company's website on your label, then please be aware that the website becomes labeling under the Federal Insecticide Fungicide and Rodenticide Act and is subject to review by the Agency. If the website is false or misleading, the product would be misbranded and unlawful to sell or distribute under FIFRA section 12(a)(1)(E). 40 CFR 156.10(a)(5) list examples of statements EPA may consider false or misleading. In addition, regardless of whether a website is referenced on your product's label, claims made on the website may not substantially differ from those claims approved through the registration process. Therefore, should the Agency find or if it is brought to our attention that a website contains false or misleading statements or claims substantially differing from the EPA approved registration, the website will be referred to the EPA's Office of Enforcement and Compliance.

Page 2 of 2
EPA Reg. No. 11581-6
Decision No. 547003

Your release for shipment of the product constitutes acceptance of these conditions. If these conditions are not complied with, the registration will be subject to cancellation in accordance with FIFRA section 6. If you have any questions, please contact Marcel Howard by phone at (703)305-6784, or via email at howard.marcel@epa.gov.

Sincerely,

A handwritten signature in black ink, appearing to be 'HJ', written in a cursive style.

Hope Johnson, Product Manager 21
Fungicide Branch
Registration Division (7505P)
Office of Pesticide Programs

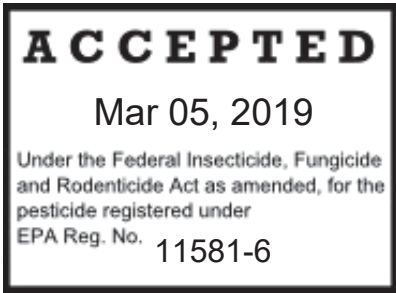
Enclosure

GATTEN®

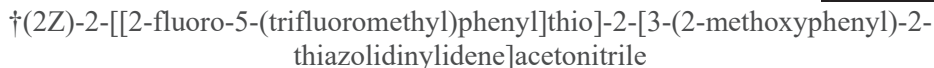
[Alternate Brand Name: Gatten®Fungicide]

A fungicide for use on apples, cherries, cantaloupes, cucumbers, grapes, squash, and strawberries for control of powdery mildew.

Active Ingredient: Flutianil†‡.....4.7%
 Other Ingredients:.....95.3%
 Total 100.0%
 0.423 lbs flutianil/gal



®Trademark of OAT Agrico Co., Ltd.



‡ [CAS No. 958647-10-4]

**KEEP OUT OF REACH OF CHILDREN
 WARNING/AVISO**

Si usted no entiende la etiqueta, busque a alguien para que se la explique a usted en detalle. (If you do not understand the label, find someone to explain it to you in detail.)

First Aid	
If in eyes:	– Hold eye open and rinse slowly and gently with water for 15-20 minutes. Remove contact lenses, if present, after the first 5 minutes, then continue rinsing. – Call a poison control center or doctor for treatment advice.
If swallowed:	– Call a poison control center or doctor immediately for treatment advice. – Have person sip a glass of water if able to swallow. – Do not induce vomiting unless told to by a poison control center or doctor. – Do not give anything to an unconscious person.
If on skin or clothing:	– Take off contaminated clothing. – Rinse skin immediately with plenty of water for 15-20 minutes. – Call a poison control center or doctor for treatment advice.
If inhaled:	– Move person to fresh air. – If person is not breathing, call 911 or an ambulance, then give artificial respiration, preferably mouth-to-mouth if possible. – Call a poison control center or doctor for further treatment advice.
Have the product container or label with you when calling a poison control center, doctor, or going for treatment. For non-emergency information concerning this product, call the National Pesticides Information Center (NPIC) at 1-800-858-7378 (NPIC Web site: www.npic.orst.edu)	
See Additional Precautionary Statements [on/in side panel, back panel, booklet]	

Manufactured [by/for]: OAT Agrico Co. LTD.	
1-3-1 Kanda Ogawa-machi, Chiyoda-ku Tokyo 101-0052, Japan	c/o Landis International, Inc. PO Box 5126 Valdosta, GA 31603-5126 Phone 1-800-526-3471

EPA Registration Number: 11581-6 EPA Establishment Number: 11581-JPN-2
 NET CONTENTS: _____ gallons/fluid ounces (_____ Liters/Milliliters)
 (Note to Reviewer: Optional text in [brackets])

Precautionary Statements

Hazards to Humans and Domestic Animals

WARNING/AVISO: Causes substantial but temporary eye injury. Do not get in eyes or on clothing. Wear protective eyewear (goggles, face shield, safety glasses). Prolonged or frequently repeated skin contact may cause allergic reactions in some individuals. Wash thoroughly with soap and water after handling and before eating, drinking, chewing gum, using tobacco or using the toilet. Remove and wash contaminated clothing before reuse.

Personal Protective Equipment (PPE)

Mixers, loaders, and other handlers must wear the following:

- Long-sleeved shirt and long pants
- Socks
- Shoes
- Chemical-resistant Gloves
- Protective Eyewear (goggles, face shield, or safety glasses)

Follow the manufacturer's instructions for cleaning/maintaining PPE. If no such instructions for washables exist, use detergent and hot water. Keep and wash PPE separately from other laundry.

User Safety Recommendations

Users should remove clothing/PPE immediately if pesticide gets inside. Then wash thoroughly and put on clean clothing.

Users should remove PPE immediately after handling this product. Wash the outside of gloves before removing. As soon as possible, wash thoroughly and change into clean clothing.

Environmental Hazards

For terrestrial uses: Do not apply directly to water, or to areas where surface water is present or to intertidal areas below the mean high water mark. Do not contaminate water when disposing of equipment washwater or rinsate.

Directions for Use

It is a violation of Federal law to use this product in a manner inconsistent with its labeling.

DO NOT apply this product in a way that will contact workers or other persons, or pets either directly or through drift. Only protected handlers may be in the area during application. For any requirements specific to your State or Tribe, consult the agency responsible for pesticide regulation.

Agricultural Use Requirements

Use this product only in accordance with its labeling and the Worker Protection Standard, 40 CFR par 170. This Standard contains requirements for the protection of agricultural workers on farms, nurseries, and greenhouses and handlers of agricultural pesticides. It contains requirements for training, decontamination, notification, and emergency assistance. It also contains specific instructions and exceptions pertaining to the statements on this label about personal protective equipment (PPE) and restricted-entry interval. The requirements in this box only apply to uses of this product that are covered by the Worker Protection Standard.

DO NOT enter or allow workers to enter treated areas during the restricted-entry interval (REI) of 12 hours.

PPE required for early entry to treated areas (that is permitted under the Worker Protection Standard and that involves contact with anything that has been treated such as plants, soil, or water), is:

- Coveralls worn over short-sleeved shirt and short pants
- Socks
- Shoes
- Chemical-resistant Gloves
- Protective Eyewear

Notify workers of the application by warning them orally and by posting warning signs at entrances to treated areas.

Use Information

GATTEN® is a fungicide for control of powdery mildew on the following specified agricultural crops: apples, cherries, cantaloupes, cucumbers, grapes, squash, and strawberries. GATTEN® may be used in programs which are compatible with the principles of Integrated Pest Management (IPM), which include the use of disease resistant crop varieties, cultural practices, pest scouting and disease forecasting systems which reduce unnecessary applications of pesticides.

Flutianil, the active ingredient in GATTEN®, is a new chemical class of fungicide of the thiazolidine group and belongs to FRAC mode of action group U13. GATTEN® is effective for strategic use in programs that attempt to minimize disease resistance to fungicides.

GATTEN® can be used effectively in dilute or concentrate sprays. Thorough, uniform coverage is essential for disease control. Apply via the following ground applications methods: airblast broadcast and groundboom broadcast. Aerial application is prohibited. Airblast broadcast would be best for apples, cherries and grapes while groundboom broadcast is best for cucumber, squash, strawberries and cantaloupe. This product is intended for use by professional applicators.

Directions for Ground Spray Application

Users must read, understand, and follow the label use rates and restrictions. Minimum label rates may be used under low disease pressure conditions while maximum label rates and shortened specified spray intervals are recommended under high disease pressure. For application, determine the number of acres to be treated, the specified label use rate, and the spray volume per acre. Prepare only the amount of spray solution that is necessary to spray the measured acres. Calibrate spray equipment prior to use.

For optimal disease control, use thorough spray coverage. Thorough spray coverage is a function of spray pressure, spray volume per acre, nozzle type and spacing and application equipment speed. Calibrate spray equipment prior to use.

Row Crops

Apply a minimum finished spray volume of 20 gallons per acre by ground unless otherwise directed under crop specific directions. For best results, it is important to obtain thorough and uniform spray coverage of the plant.

To clean the sprayer after use, drain and flush with water. Use rinsate on crop according to label instructions or dispose of in an approved manner (See STORAGE AND DISPOSAL).

Orchard and Vine Crops

To achieve optimum disease control, it is important to obtain thorough and uniform spray coverage. Choose a finished spray volume appropriate for the size of tree or vine and amount of foliage which will provide thorough coverage throughout the canopy. Follow directions listed under crop specific directions.

To clean the sprayer after use, drain and flush with water. Use rinsate on crop according to label instructions or dispose of in an approved manner (See STORAGE AND DISPOSAL).

Restrictions

DO NOT apply via chemigation.

DO NOT apply via aerial application.

NOT for use in greenhouses.

DO NOT combine GATTEN® in the spray tank with other pesticides, surfactants, or fertilizers unless prior use has shown the combination physically compatible, effective, and non-injurious under conditions of use.

GATTEN® is physically and biologically compatible with many registered pesticides, fertilizers or micronutrients. Contact your supplier or a local Extension for advice when considering mixing GATTEN® with other products. If you have no experience with the combination you are considering, you should conduct a test to determine physical compatibility. To do so, add the specified proportions of both chemicals with the same proportion of water, as will be present in the chemical supply tank, into a suitable container; mix thoroughly and allow to stand for five minutes. If the combination remains mixed, or can be readily remixed, the mixture should be physically compatible.

It is the pesticide user's responsibility to ensure that all products are registered for the intended use. Read and follow the applicable restrictions and limitations and directions for use on all product labels involved in tank mixing. Users must follow the most restrictive directions for use and precautionary statements of each product in the tank mixture.

Rotational Crops Directions

Any crop may be planted immediately after the last application.

Spray Drift Directions

Avoiding spray drift at the application site is the responsibility of the applicator. The interaction of many equipment and weather related factors determine the potential for spray drift. The applicator and the grower are responsible for considering all these factors when making decisions. Where states have more stringent regulations, they must be observed.

Resistance-Management Recommendations

Fields should be scouted prior to application to identify the disease that is present and to determine if the intended application may be effective. Fields should be scouted at the appropriate period after application to verify that the treatment was effective.

For further information or to report suspected resistance contact OAT Agrio Co. LTD. at <http://www.oat-agrio.co.jp/en/index.html>. You can also contact your pesticide distributor or university extension specialist to report resistance. If resistance is suspected, treat with an effective pesticide, if available, having a different mode of action and/or use non-chemical means to best manage the pest.

For resistance management, GATTEN®, contains a Group U13 fungicide. Any fungal population may contain individuals naturally resistant to GATTEN® and other Group U13 fungicides. A gradual or total loss of pest control may occur over time if these fungicides are used repeatedly in the same fields. Appropriate resistance-management strategies should be followed.

To delay fungicide resistance, take one or more of the following steps:

- Do not apply more than maximum number of applications for each labeled crop in the directions for application table below and avoid consecutive sprays of GATTEN® or other

fungicides in the same group in a season.

- Use tank mixtures with fungicides from a different group that are equally effective on the target pest when such use is permitted. Use at least the minimum application rate as labeled by the manufacturer.
- Adopt an integrated disease management program for fungicide use that includes scouting, uses historical information related to pesticide use, and crop rotation, and which considers host plant resistance, impact of environmental conditions on disease development, disease thresholds, as well as cultural, biological and other chemical control practices.
- Where possible, make use of predictive disease models to effectively time fungicide applications. Note that using predictive models alone is not sufficient to manage resistance.
- Monitor treated fungal populations for resistance development.

Directions for Application

Crop	PHI	Target Diseases	Application Rate fl oz product /A (lb a.i./A)	Directions	Restrictions
Apples	14	<i>P. leucotricha</i> (Powdery Mildew)	5.5 (0.017) – 12.8 (0.04)	Use water volumes of 20 to 100 gallons per acre for concentrate sprays and 101 to 200 gallons per acre for dilute sprays. Repeat applications at 7 to 14-day intervals, depending on disease pressure. Apply to foliage during the fruiting stage using airblast ground equipment.	Maximum Application rate: 12.8 fl oz product /A (0.04 lb a.i./A) DO NOT apply more than 4 applications per year. DO NOT exceed a maximum of 0.16 lb ai per acre per year. DO NOT apply within 14 days of harvest.
Cantaloupes	0	<i>G. cichoracearum</i> (Powdery Mildew)	5.5 (0.017) – 12.8 (0.04)	Use water volumes of 30 to 100 gallons per acre for sprays. Repeat applications at 7 to 14-day intervals, depending on disease pressure. Apply to foliage during flowering to the mature fruit stage using broadcast ground equipment.	Maximum Application rate: 12.8 fl oz product /A (0.04 lb a.i./A) DO NOT apply more than 5 applications per year. DO NOT exceed a maximum of 0.20 lb ai per acre per year. Crop can be harvested after test material has dried.

Crop	PHI	Target Diseases	Application Rate fl oz product /A (lb a.i./A)	Directions	Restrictions
Cherries	3	<i>P. clandestina</i> (Powdery Mildew)	5.5 (0.017) – 12.8 (0.04)	Use water volumes of 30 to 100 gallons per acre for concentrate sprays and 101 to 300 gallons per acre for dilute sprays. Repeat applications at 7 to 14-day intervals, depending on disease pressure. Apply to foliage during the fruiting stage using airblast ground equipment.	Maximum Application rate: 12.8 fl oz product /A (0.04 lb a.i./A) DO NOT apply more than 4 applications per year. DO NOT exceed a maximum of 0.16 lb ai per acre per year. DO NOT apply within 3 days of harvest.
Cucumbers (Not for use in California)	0	<i>G. cichoracearum</i> (Powdery Mildew)	5.5 (0.017) – 12.8 (0.04)	Use water volumes of 30 to 100 gallons per acre for sprays. Repeat applications at 7 to 14-day intervals, depending on disease pressure. Apply to foliage during seedling to the fruiting stage using broadcast ground equipment.	Maximum Application rate: 12.8 fl oz product /A (0.04 lb a.i./A) DO NOT apply more than 5 applications during each growing season. Maximum of two growing seasons per year. DO NOT exceed a maximum of 0.20 lb ai per acre per season. Crop can be harvested after product has dried.

Crop	PHI	Target Diseases	Application Rate fl oz product /A (lb a.i./A)	Directions	Restrictions
Grapes	14	<i>E. necator</i> (Powdery Mildew)	5.5 (0.017) – 12.8 (0.04)	Use water volumes of 20 to 100 gallons per acre for concentrate sprays and 101 to 400 gallons per acre for dilute sprays. Repeat applications at 7 to 14-day intervals, depending on disease pressure. Apply to foliage during the fruiting stage using airblast ground equipment.	Maximum Application rate: 12.8 fl oz product /A (0.04 lb a.i./A) DO NOT apply more than 4 times applications per year. DO NOT exceed a maximum of 0.16 lb ai per acre per year. DO NOT apply within 14 days of harvest.
Squash	0	<i>G. cichoracearum</i> (Powdery Mildew)	5.5 (0.017) – 12.8 (0.04)	Use water volumes of 30 to 100 gallons per acre for sprays. Repeat applications at 7 to 14-day intervals, depending on disease pressure. Apply to foliage during seedling to crop maturity stage using broadcast ground equipment.	Maximum Application rate: 12.8 fl oz product /A (0.04 lb a.i./A) DO NOT exceed a maximum of 0.20 lb ai per acre per season. DO NOT apply more than 5 applications during each growing season. There is a maximum of two growing seasons per year allowed. Crop can be harvested after test material has dried.

Crop	PHI	Target Diseases	Application Rate fl oz product /A (lb a.i./A)	Directions	Restrictions
Strawberries	0	<i>P. aphanis</i> (Powdery Mildew)	5.5 (0.017) – 12.8 (0.04)	Use water volumes of 50 to 200 gallons per acre for sprays. Repeat applications at 7 to 14-day intervals, depending on disease pressure. Apply to foliage during the fruiting stage using broadcast ground equipment.	Maximum Application rate: 12.8 fl oz product /A (0.04 lb a.i./A) DO NOT apply more than 5 applications per year. DO NOT exceed a maximum of 0.20 lb ai per acre per year. Crop can be harvested after test material has dried.

Storage and Disposal

Do not contaminate water, food, or feed by storage or disposal.

Storage:

Store product in a secure dry, cool and well ventilated place. Store product in original container. Do not store for prolonged periods in direct sunlight.

Pesticide Disposal:

Pesticide wastes may be hazardous. Improper disposal of excess pesticide, spray mixture or rinsate is a violation of Federal Law. If these wastes cannot be disposed of by use according to label instructions, contact your State Pesticide or Environmental Control Agency, or the Hazardous Waste Representative at the nearest EPA Regional Office for guidance.

Container Handling:

Nonrefillable container. Do not reuse or refill this container. Clean container promptly after emptying. Triple rinse or pressure rinse container (or equivalent) promptly after emptying. Triple (5 gallons or less) Triple rinse as follows: Empty the remaining contents into application equipment or a mix tank and drain for 10 seconds after the flow begins to drip. Fill the container ¼ full with water and recap. Shake for 10 seconds. Pour rinsate into application equipment or a mix tank or store rinsate for later use or disposal. Drain for 10 seconds after the flow begins to drip. Repeat this procedure two more times.

(Larger than 5 gallons) Triple Rinse as follows: Empty remaining contents into application equipment or a mix tank. Fill the container ¼ full with water. Replace and tighten closures. Tip container on its side and roll it back and forth, ensuring at least one complete revolution, for 30 seconds. Stand the container on its end and tip it back and forth several times. Turn the container over onto its other end and tip it back and forth several times. Empty the rinsate into application equipment or a mix tank or store rinsate for later use or disposal. Repeat this procedure two more times.

Then offer for [recycling if available or] reconditioning if appropriate or puncture and dispose of in a sanitary landfill or by incineration.

WARRANTY AND CONDITIONS OF SALE

SELLERS OFFER AND THE BUYER ACCEPTS THIS PRODUCT UNDER THE FOLLOWING AGREED CONDITIONS OF SALE AND WARRANTY

The directions for the use of this product are believed to be adequate and must be followed carefully. However, it is impossible to take into account all the variables and to eliminate risks associated with its use. Injury or damage may result because of conditions that are beyond the control of the SELLER.

To the extent consistent with applicable law, SELLER warrants that this product conforms to the chemical description on this label and is believed to be reasonably fit for the purposes stated on this label when used in accordance with the directions on this label under conditions of normal use. TO THE EXTENT CONSISTENT WITH APPLICABLE LAW, SELLER MAKES NO WARRANTIES OF MERCHANTABILITY OR FITNESS OR ANY OTHER EXPRESS OR IMPLIED WARRANTY.

To the extent consistent with applicable law, the SELLER shall not be liable for consequential, special or indirect damages resulting from the use or handling of the product. Any variation or exemption from this warranty must be in writing and signed by an authorized representative of the SELLER.

20181128LAS