

1 OF 2
11540-18
PM 17

BEST AVAILABLE COPY

DIRECTIONS

For maximum effectiveness, a combination of spot surface treatment and fogging is recommended. **SURFACE SPRAYING:** To control roaches, ants, silverfish, spiders, crickets and to kill exposed or accessible stages of clover mites, cheese mites, granary weevils, rice weevils, confused flour beetles, rust red flour beetles, saw-toothed grain beetles, spider beetles, cigarette beetles, drugstore beetles, meal worms, grain mites, and caddisflies: Use a good sp.ayer adjusted to deliver a coarse wet spray. Direct the spray into hiding places, cracks and crevices, under pallets, around containers of stored foods, around the base of machinery, behind shelves and drawers. For silverfish, spray book-cases. For ants, spray trails, nests and points of entry. If surface application only is to be used, spray floors, walls, and other surfaces applying at a rate of 1 gallon to 750 square feet of surface. To control carpet beetles: Spray edges of carpeting and under carpeting and rugs. Make localized application to floor and baseboards. Spray directly into cracks, closets, and infested areas of shelving. Repeat treatment as needed.

To control bedbugs: Spray mattresses lightly, particularly around tufts and seams. Take beds apart and spray in all joints. Treat baseboards, mouldings, and floors. Repeat treatment as needed.

To control fleas and brown dog ticks: Thoroughly spray infested areas, pet beds, resting quarters, nearby cracks and crevices, along and behind baseboards, mouldings, window and door frames, and localized areas of floor and floor covering. Fresh bedding should be placed in animal quarters following treatment. Concurrent treatment of animals with an approved insecticide is recommended. Repeat treatment as needed.

SPACE SPRAYING: Close doors and windows and shut off ventilating systems. Apply with a good machine adjusted to deliver a fine mist or fog. For rapid control of flies, fruit flies, gnats, mosquitoes, skipper flies, wasps, hornets, Angoumois grain moths, Mediterranean flour moths, Indian meal moths, and tobacco moths: direct spray at an upward angle, distributing it uniformly throughout the entire area, at a rate of one gallon to 200,000 cubic feet of space.

IN MUSHROOM PRODUCTION AND PROCESSING: To control adult Phorids, Sciarids, and Cecidomyiids in growing houses, apply at a rate of 1 ounce per 1000 cubic feet of space. Fogger should be operated 8 to 10 feet away from beds and directed slightly upward over them. Circulating fans should be left in operation, but for best results, refrigeration should be turned off. In packing and canning plants, use at rate of 1 ounce to 2000 cubic feet of space.

OUTDOOR MOSQUITO CONTROL

To control adult mosquitoes, apply as a fog or fine mist using good mechanical, thermal or compressed air equipment. For best results, treat when wind velocity does not exceed 5 miles per hour. Application in the evening or early morning is recommended.

Treat area thoroughly with particular attention to low and marshy places, shore lines, stagnant pools or ponds, and shrubbery or vegetation where mosquitoes may rest. Apply at a rate of 0.3 gallons per acre (or 0.9 fluid ounces per 1000 square feet).

Using truck mounted or mobile equipment, the above application rate will result if a 400 foot swath is laid down traveling at 5 m.p.h. and dispersing spray at a rate of 75 gallons per hour. May also be applied by aircraft.

PYRENONE® NO. 6

Insecticide

Industrial and Mill Spray

For Rapid Control of Flying and Crawling Insects Named On Use in Food Processing Plants, Cannaries, Packing Houses, Mills, Warehouses, Box Cars, Ship's Holds, Breweries, Bottling Plants, Markets, Theaters, Hospitals, Schools, Hotels, Motels, Restaurant Production and Processing, and Outdoor Mosquito Control.

The Insecticidal Components (Piperonyl Butoxide and Pyrethrins) food additives and When This Product Is Used As Directed, Allowance Will Not Be Exceeded.

ACTIVE INGREDIENTS

Pyrethrins	0.5%
*Piperonyl Butoxide, Technical	2.5%
Petroleum Distillate	97.0%

*Equivalent to 2.0% (butylcarbityl) (6-propylpiperonyl ether and to 0.5% of related compounds).

CAUTION

KEEP OUT OF REACH OF CHILDREN

See rear panel for additional precautions

NET CONTENTS gallons

*Pyrenone is a registered trademark of FMC Corp.

Manufactured by

JOHNSON-HAYWORTH CHEMICAL CO.
LA GRANGE, ILLINOIS 60525

BEST AVAILABLE COPY

20F2

ENONE® NO. 6

Insecticide

Industrial and Mill Spray

Against Crawling Insects Named On This Label

Granaries, Packing Houses, Mills, Elevators, Granaries, Bldgs, Breweries, Bottling Plants, Bakeries, Stores, Schools, Hotels, Motels, Restaurants, in Mushroom and Outdoor Mosquito Control.

Piperonyl Butoxide and Pyrethrins are classified as Insecticides. Use As Directed, Allowable Tolerance Levels

Technical 0.50%
2.50%
97.00%
(butylcarbityl) (6-propylpiperonyl)
related compounds.

100%

CAUTION

KEEP OUT OF REACH OF CHILDREN

Read label for additional precautions

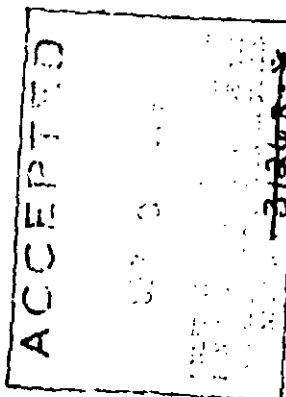
CONTENTS gallons

Registered trademark of FMC Corporation

Manufactured by

YVONNE CHEMICAL CO.

YVONNE, ILLINOIS 60525



Use Precautions

The use of this product in food processing plants should be confined to time periods when the plant is not in operation. Foods should be removed or covered before treatment. All food processing surfaces should be covered during treatment or thoroughly cleaned before using.

Remove any birds, pets or fish aquariums before spraying.

Vacate premises after treatment and ventilate before reoccupying. Sweep up and remove dead insects.

Repeat treatment when re-infestation occurs.

CAUTION:

Harmful if swallowed. Avoid contamination of feed and foodstuffs.

This product is toxic to fish. Keep out of lakes, streams or ponds. Do not contaminate water by cleaning of equipment or disposal of wastes.

Do not reuse empty container. Return to drum reconitioner or destroy by perforating or crushing and burying in a safe place away from water supplies.

EPA Reg. No. 31268-8

Establishment No.

BEST AVAILABLE COPY