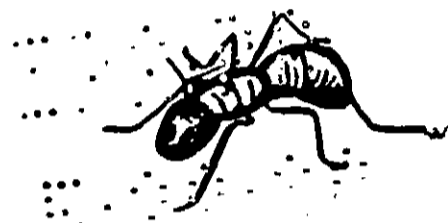


# Hy-Test Roach and Ant Residual Spray



### PRECAUTIONARY STATEMENTS HAZARDS TO HUMANS & DOMESTIC ANIMALS CAUTION

Harmful if swallowed. Avoid contamination of feed and feedstuffs. When using this product in food processing plants, foods should be removed or covered during treatment. All food processing surfaces should be covered during treatment or thoroughly cleaned before using. When using this product in these areas, apply only when the facility is not in operation. Remove pets, birds and cover fish aquariums before spraying. Do not remain in treated areas and ventilate the area after treatment is completed.

### ENVIRONMENTAL HAZARDS

This product is toxic to fish and birds. Keep out of any body of water. Do not contaminate water by cleaning of equipment or disposal of wastes.

### PHYSICAL OR CHEMICAL HAZARDS

Do not spray near or toward an open flame.

### DIRECTIONS FOR USE

It is a violation of Federal law to use this product in a manner inconsistent with its labeling.

### STORAGE AND DISPOSAL

Do not contaminate water, food or feed by storage or disposal. Open dumping is prohibited. Pesticide, spray mixture or rinsate that cannot be used or chemically processed should be disposed of in landfill approved for pesticides or buried in a safe place away from water supplies. Recycle container and offer for reconditioning or disposal in approved landfill or bury in a safe place. Consult Federal, state or local disposal authorities for approved alternative procedures.

### PYRENONE® Insecticide Provides Flushing Action and Fast Knockdown

Controls Cockroaches, Ants, Silverfish, Spiders, Crickets, Earwigs, and Brown Dog Ticks.

Use In and Around Homes, Apartments, Garages, Similar Residential Structures, Institutions, Restaurants, and Food Processing Plants.

Use Outdoors As An Aid In Reducing Annoyance from Flies and Mosquitoes Entering the Home.

Active Ingredients	
Pyrethrin	0.052%
* Pyrethrin Butyrate, Technical	0.260%
** Chlorpyrifos [0,0-dimethyl 0-(3,5,6-trichloro-2-pyridyl) phosphorothioate]	0.500%
Petroleum Distillate	96.736%
Inert Ingredients	0.452%
	100.000%

\* Equivalent to 0.208% (butylcarbyl) (6-propylpyrethrin) ester and to 0.052% related compounds  
\*\* U.S. Patent No. 3,244,586

PYRENONE® Fairfield American trademark

**NOTE TO PHYSICIAN:** Contains petroleum distillate if gastric lavage is deemed necessary, undertake only after proper placement of a cuffed endotracheal tube. Active ingredients contain a cholinesterase inhibitor. Treat symptomatically. Atropine is an antidote.

### USE PRECAUTIONS

Do not allow children or pets to contact treated surfaces until spray has dried.

Do not spray air in rooms or use on plants. Apply as a surface spray only as specified on the label.

Do not allow spray to contact food, feedstuffs or water supplies. Thoroughly wash dishes and food handling utensils if contaminated with this product.

This product is toxic to fish. Do not contaminate water by cleaning of equipment or disposal of wastes. Do not reuse empty container. Destroy when empty and discard in a safe place.

**DIRECTIONS FOR FOOD HANDLING ESTABLISHMENTS** (Places other than private residences in which exposed food is held, processed, prepared or served).

### FOOD AREAS-APPLICATION LIMITED TO CRACK AND CREVICE TREATMENT ONLY

Includes areas for receiving, storage, packing (canning, bottling, wrapping, boxing) preparing, edible waste storage and enclosed processing systems (mills, driers, edible oils, syrups) and serving areas (when food is exposed and facility is in operation).

To control roaches, ants, earwigs, waterbugs, silverfish, spiders and crickets apply in small amounts directly into cracks and crevices using equipment capable of delivering a pin stream of insecticide, in points between different elements of construction, between equipment and floors, openings leading to voids and hollow spaces in walls, equipment legs and bases, in conduits, motor housings, junction or switch boxes. Prior to application de-energize electrical equipment. After application allow time for oil to evaporate before starting motors or placing switches in "ON" position. Care should be taken to avoid depositing the product onto exposed surfaces or introducing the material into the air. Avoid contamination of food or food processing surfaces.

**\*APPLICATIONS OF THIS PRODUCT IN THE FOOD AREAS OF FOOD HANDLING ESTABLISHMENTS OTHER THAN AS A CRACK AND CREVICE TREATMENT ARE NOT PERMITTED.**

**SERVING AREAS** - Facilities where foods are served such as dining rooms, but excluding areas where foods may be prepared or held, apply as a spot treatment to splatter surfaces, such as baseboards, under elements of construction and into cracks and crevices. Avoid treating surfaces likely to be contacted by food. (Do not apply when facility is in operation or foods are exposed.)

**DIRECTIONS FOR HOUSEHOLD AND OUTDOOR USE IN NON-FOOD AREAS** - Including garbage rooms, lavatories, floor drains (to sewers) entries and vestibules, offices, locker rooms, machine rooms, boiler rooms, garages, mop closets and storage (after canning or bottling). Apply to baseboard areas, around water pipes, surfaces behind and beneath sinks, lockers, tables, pallets and similar areas where insects hide or through which they may enter. Repeat treatment as required.

**Brown Dog Ticks** - Apply thoroughly as a spot treatment to infested areas such as pet beds and resting quarters, nearby cracks and crevices, along and behind baseboards, window and door frames and localized areas of floor and floor covering where these pests may be present. Fresh bedding should be placed in animal quarters following treatment. Do not spray pets with this product.

**Flies and Mosquitoes** - Use only on outdoor surfaces. Spray outside surfaces of windows and door frames and other areas where these pests may enter the home. Also spray dark corners and localized resting areas, such as under eaves, porches, partitions, and in garages where these insects may congregate. Flies and mosquitoes coming to rest on treated surfaces will be killed. Repeat treatment when effectiveness diminishes.

In case of sale or use On purchase or use of this product buyer and user agree to the following conditions:

Manufacturer, Hy-Test warrants that the product, at the time of sale by FAC (1) conforms to the ingredient statement on the label, and (2) is reasonably fit for the purposes set forth in the Directions for Use. Buyer agrees to use the product in accordance with the label and to return the product to the manufacturer if it is found to be defective.

### KEEP OUT OF REACH OF CHILDREN.

## CAUTION

**HARMFUL IF SWALLOWED; COMBUSTIBLE:** Avoid contact with eyes, skin, and clothing. Avoid breathing vapors or spray mist. Keep away from food, feedstuffs and domestic water supplies. Do not smoke while using. Wash thoroughly after handling. **DO NOT USE, POUR, SPILL OR STORE NEAR HEAT OR OPEN FLAME.** If swallowed, do not induce vomiting. Call a physician immediately.

EPA REG. NO. 11333-9  
EPA EST. NO. 11333-NJ-1

MANUFACTURED BY  
**HY-TEST 303 CORP.**  
9 MEADOW ROAD  
RUTHERFORD, N.J. 07070

NET CONTENTS \_\_\_\_\_ GALLONS

NOV 21 1980

Under the Federal Insecticide, Fungicide, and Rodenticide Act, registered under Reg. No. 11333-9