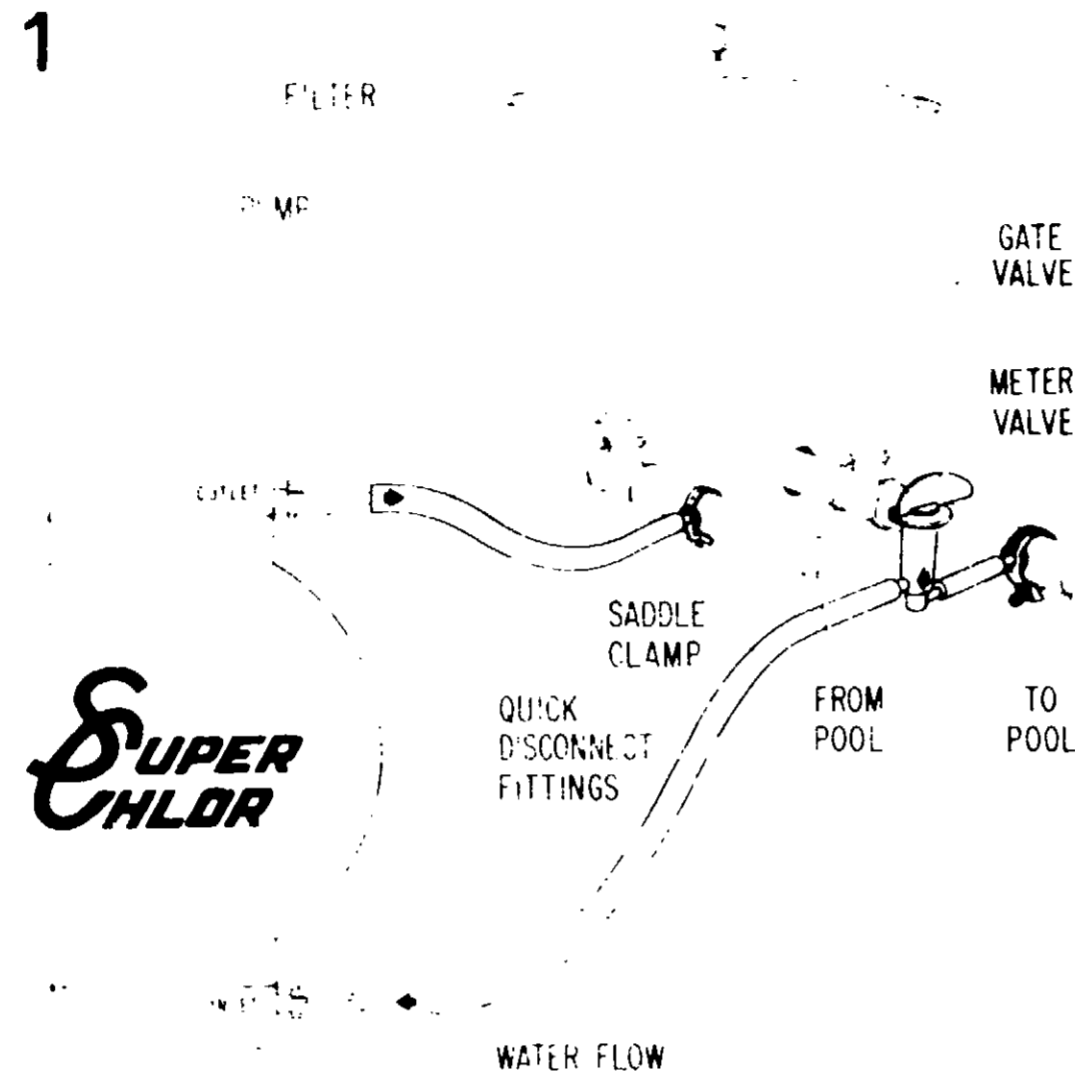


SUPER-CHLOR INSTRUCTIONS

EXTRA BALLS SHOULD BE STORED IN A COOL DRY AREA



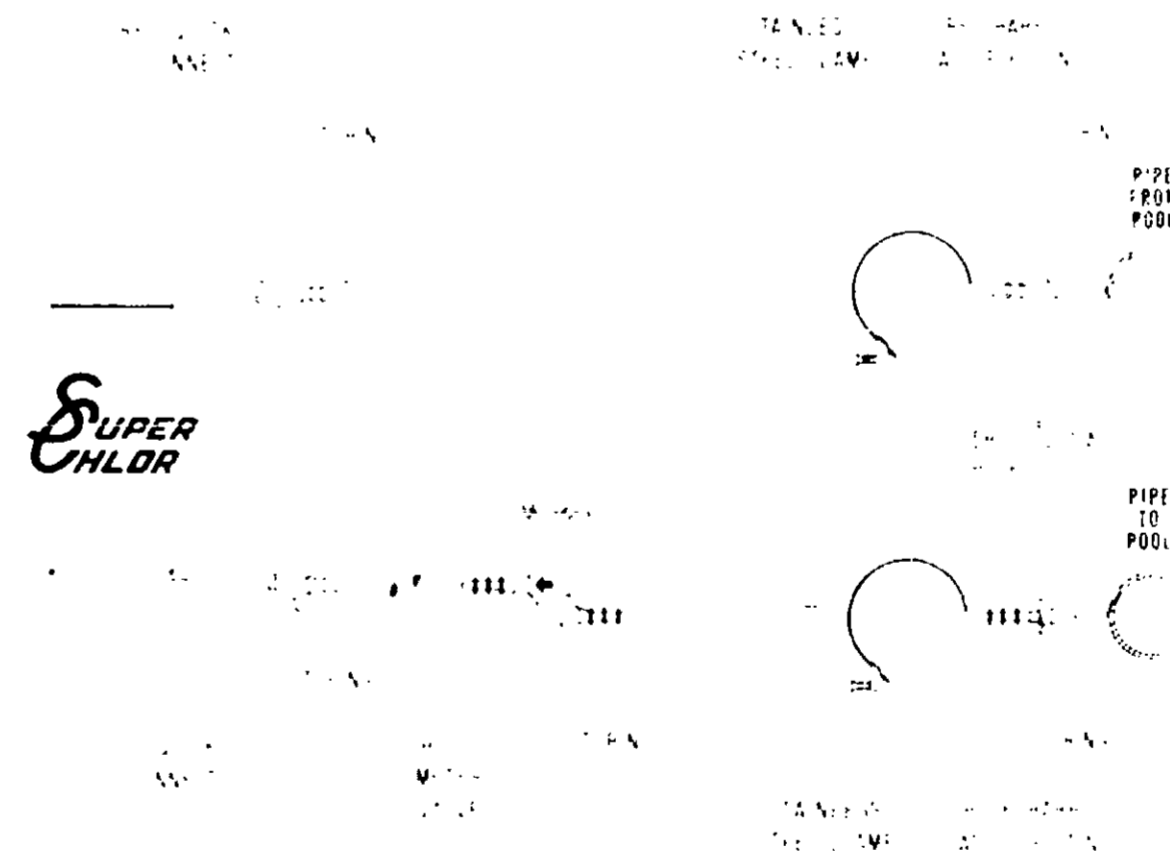
1. WARNING: As shown on the drawings there should be no shut off valves between the pool and the Super Chlor hookup. If there is they should be kept open to allow the gases from the Super Ball to flow freely to the pool when the pump is turned off. If the pool is shut down for repairs or cold weather, disconnect the ball and drain. Store in a cool dry place.

IMPORTANT: Be sure inlet or meter valve line is connected to pipe on pool side of filter to assure clean water going through super ball (as shown on drawing).

2. IMPORTANT: Always follow the color code when installing the Super Chlor kit or replacing the ball. Red to red and blue to blue. Water enters the Super Ball through the bottom (blue) inlet, flows up through the tablets and out the top (red) outlet. Keep tubing as short as possible for maximum flow. Connect metering valve to blue inlet line only and as close to pool piping as possible for rigidity.

Tools required: 3/8" drill, screwdriver & knife.

2



ALADDIN INDUSTRIES

6460 Zane Avenue North
 Minneapolis, Minnesota 55429
 Phone 1 612 535-1466

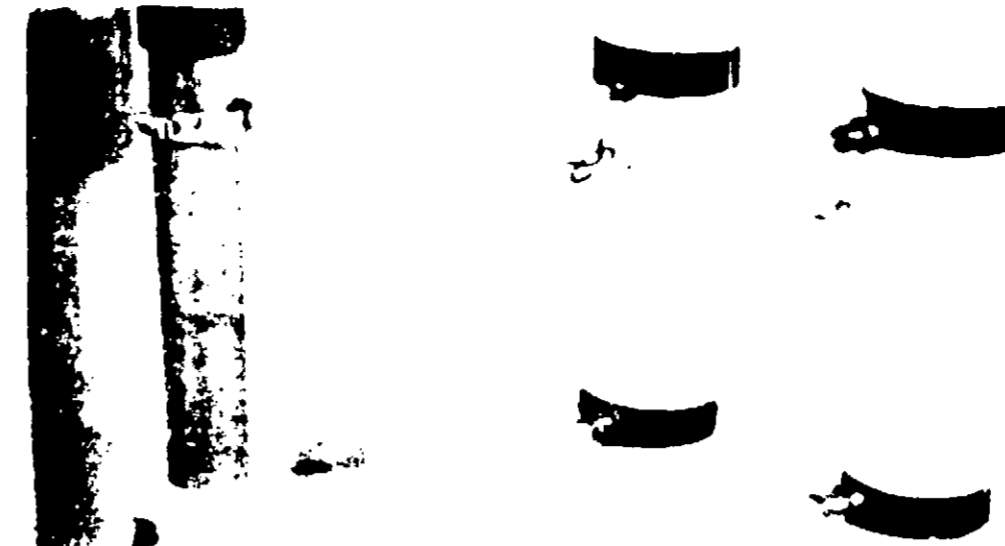
**SEE REVERSE
 SIDE FOR MORE
 DETAILS**

SINGLE



3. Whether using one or two Super Balls slight periodic adjustments of the metering valve will be necessary as the chlorine tablets dissolve. When installing or changing a Super Ball on a single or double hookup always open metering valve to allow the ball to fill with water and then adjust to the desired flow. When ball is empty, remove and connect a new ball.

DUAL



4. CONNECTORS AND TUBING FOR DUAL HOOKUP AVAILABLE AT YOUR DEALER. When using a dual hookup be sure to follow color code when attaching second ball. The flow of the water must always be as described above, (#2). Metering valve adjusts flow for both balls. This method insures ample chlorine for very large pools.

THIS IS A SEALED UNIT AND WILL NOT OPERATE IF PUNCTURED

METER VALVE SETTINGS

ONE SUPER BALL

Pool Cap. Gals.	Meter Valve No.
5,000	No. 1
10,000	No. 1½
15,000	No. 2
20,000	No. 2½
25,000	No. 3
30,000	No. 3½
35,000	No. 4
40,000	No. 5
45,000	No. 6
50,000	No. 7
55,000	No. 8
60,000	No. 9
65,000	No. 10
70,000	No. 11
75,000	No. 12

TWO SUPER BALLS

80,000	No. 6
90,000	No. 7
100,000	No. 8
120,000	No. 9
130,000	No. 10
140,000	No. 11
150,000	No. 12

The above is intended as a guide only and will have to be adapted to the individual pool and use.
Patent Pending

DIRECTIONS FOR USE

WARNING: Do not throw these tablets directly into the pool, they may stain, bleach or etch the bottom.

1. The filter system should be backwashed or properly cleaned and the pH adjusted between 7.2 and 7.6.
2. Initially the pool water should be conditioned with Chlorine Stabilizer according to stabilizer label directions.
3. The pool should first be super chlorinated so that a chlorine residual of between 1.0 and 3.0 ppm is obtained as determined by a test kit.
4. Thereafter, set feeder controls to maintain an average residual of 1.0 and 2.0 ppm as determined by use of a good test kit.
5. These tablets are slow dissolving and are designed for use in this chemical feeder.
6. These tablets are acidic and will balance the high pH of pool water in most areas. Test the pH of your pool water at regular intervals and use soda ash or acid as required to maintain a pH of 7.2 and 7.6. **IMPORTANT:** Water at pH below 7.0 will burn the eyes and may damage the pool or filtering system. At pH above 8.0 eye irritation also occurs and chlorine effectiveness rapidly diminishes.

Buyer assumes all risks of use, storage or handling of the tablets not in strict accordance with the directions given hereon.

As a guide to the above chlorinator, with the meter valve setting at number 6, water temperature at 80°, a flow rate of ½ GMP, will produce 500 PPM available chlorine. This should be sufficient to maintain a chlorine residual of 1 PPM in a pool of 45,000 gal. with normal pool use. Increased water temp, air temp, or bather load will require an increase in meter valve setting of approximately 1 number to maintain same residual.

This product is toxic to fish. Treated effluent should not be discharged where it will drain into lakes, streams or ponds.

**SUPER-CHLOR
FOR
AUTOMATIC CHLORINATION
OF SWIMMING POOLS
90% CHLORINE TABLETS**

Active ingredients: trichloro-s-triazinetriene 99.5%
Inert Ingredients: .5%

WARNING

KEEP OUT OF REACH OF CHILDREN

Contains very strong oxidizing agent. Keep from heat, flames or moisture. Keep container in cool dry place. **DO NOT MIX WITH ANYTHING OTHER THAN WATER IN LARGE QUANTITIES.** Mixture with other materials, including algaecides and other chlorine compounds may result in fire or explosion. Keep away from eyes, avoid breathing dust or fumes. Avoid contact with skin; flush with water after contact.

POISON

Concentrated Material May Be Fatal If Swallowed.
ANTIDOTE: External - Wash with water. Internal - Drink raw egg white, milk or rice gruel. Follow with emetic (Tablespoon of mustard in glass of warm water). Call Physician. **HARMFUL TO SKIN AND EYES —**

In case of contact with eyes, flush with plenty of water for at least 15 minutes; get medical attention.

See enclosed instruction sheet for usage.

Do not reuse container. Destroy when empty!

Net Weight: 7.105 lbs. (3.21 kg) (14.25 lbs.)

ALADDIN INDUSTRIES
6460 Zane Avenue North
Minneapolis, Minnesota
55429

SUPER CHLORINE TABLETS

ACTIVE INGREDIENT:

TRICHLORO-S-TRIAZINETRIONE

• INERT INGREDIENTS

ACCEPTED

.....AUG 5 1974..... 99.5%

..... 0.5%

NET WT. 10 pounds

UNDER THE FEDERAL INSECTICIDE
FUNGICIDE AND RODENTICIDE ACT
FOR ECONOMIC POISON REGISTERED
ED UNDER NO. 11329-1

*90% Available Chlorine

DANGER

KEEP OUT OF REACH OF CHILDREN.
SEE FIRST AID AND PRECAUTIONS ON
SIDE PANEL.

SUPER CHLORINE TABLETS

ACCEPTED

DIRECTIONS FOR USE

When starting up a new pool. super-

SU
sh
at
ga
ch

DANGER

SUPER CHLORINE TABLETS

DANGER

KEEP OUT OF REACH OF CHILDREN

Corrosive. Causes eye damage. Do not get in eyes. Causes irritation on wet skin. Avoid prolonged skin contact with tablets. Wash hands thoroughly after handling. May be Fatal or Harmful if Swallowed. Avoid breathing dust or fumes.

FIRST AID:

EXTERNAL - Wash with water.
INTERNAL - Drink raw egg white, milk or rice gruel. Follow with emetic (tablespoon of mustard in glass of warm water). CALL A PHYSICIAN.

Harmful to Skin and Eyes: In case of contact with eyes flush with plenty of water for at least 15 minutes and get medical attention. Do not reuse container. Rinse empty container thoroughly with water before discarding.

ACCEPTED

AUG 5 1974

UNDER THE FEDERAL INSECTICIDE
FUNGICIDE AND RODENTICIDE ACT
FOR ECONOMIC POISON REGISTERED
UNDER NO. 11329-7

DANGER!

Add these tablets only to a skimmer or pump basket. Do not throw these tablets directly into the pool; they may stain, bleach, or etch the bottom of the pool. CONTAINS VERY STRONG OXIDIZING AGENT. Each tablet weighs approximately 1/2 oz.

Keep from heat, flame, or moisture.

Keep container covered in cool, dry place. DO NOT MIX WITH ANYTHING OTHER THAN WATER IN LARGE QUANTITIES.

This product is toxic to fish. Treated effluent should not be discharged where it will drain into lakes, streams, or ponds.

DIRECTIONS FOR USE

When starting up a new pool, super-chlorinate to satisfy chlorine demand and to establish a chlorine residual of 1.0 ppm to 1.5 ppm available chlorine. To accomplish this, add 2 oz. SUPER CLEARON Concentrated Pool Chlorine per 1000 gallons of pool water. The next morning, add syanuric acid at the rate of 4 oz. per 1000 gallons to stabilize pool.

A shock treatment should be made every week during hot weather or after heavy rains. Less frequent shock treatments may be made during cool weather. For the shock treatment, add 2 oz. of SUPER CLEARON Concentrated Pool Chlorine per 1000 gallons of pool water. Swimmers should not be permitted in the pool after the shock treatment until the chlorine has reached the 1.0 ppm to 2.0 ppm range.

Keep in mind that a slight flexibility must be maintained in the event of heavy accumulations of dust and dirt caused by storms or super heavy bathing loads which require additional dosages as needed to maintain the chlorine residual between 1.0 ppm and 2.0 ppm.

SUPER C

should be
at the rate
gallons of
chlorine
ppm to 2
suitable
maintain
These tablets
and are
high pH
Water at
eyes and
scale forming
ing system
irritation
effective

Seller makes
or implies
this product
the label
use and/or
when such
contrary

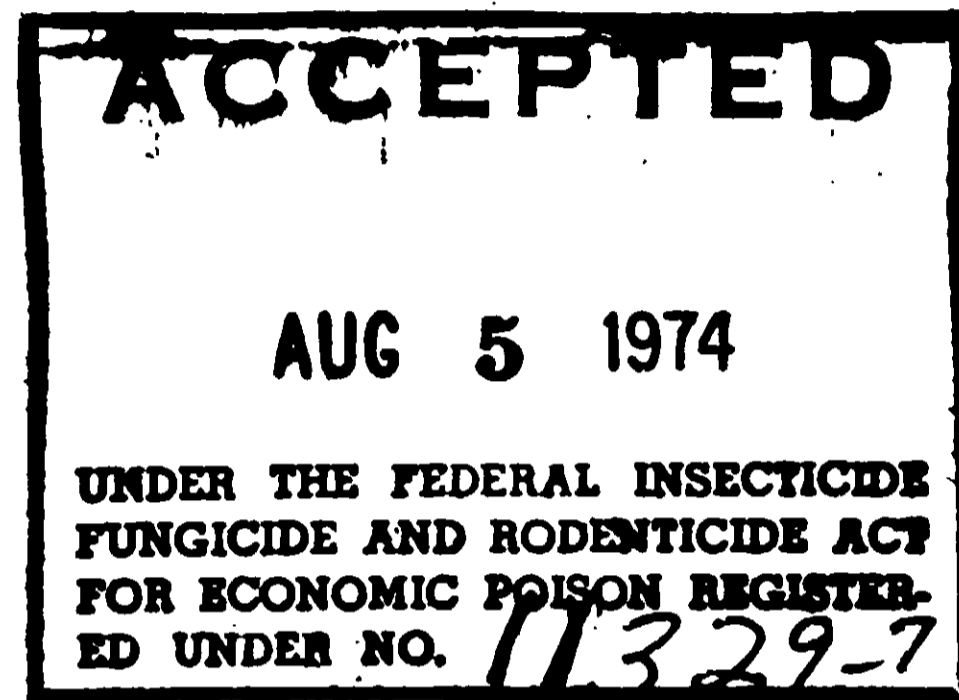
E.P.A. REGISTERED

PACKAGED

ALADDI

Highway
Roger

CHLORINE TABLETS



DANGER!

Add these tablets only to a skimmer or pump basket. Do not throw these tablets directly into the pool; they may stain, bleach, or etch the bottom of the pool. CONTAINS VERY STRONG OXIDIZING AGENT. Each tablet weighs approximately 1/2 oz.

Keep from heat, flame, or moisture.

Keep container covered in cool, dry place. DO NOT MIX WITH ANYTHING OTHER THAN WATER IN LARGE QUANTITIES.

This product is toxic to fish. Treated effluent should not be discharged where it will drain into lakes, streams, or ponds.

DIRECTIONS FOR USE

When starting up a new pool, superchlorinate to satisfy chlorine demand and to establish a chlorine residual of 1.0 ppm to 1.5 ppm available chlorine. To accomplish this, add 2 oz. SUPER CLEARON Concentrated Pool Chlorine per 1000 gallons of pool water. The next morning, add syanuric acid at the rate of 4 oz. per 1000 gallons to stabilize pool.

A shock treatment should be made every week during hot weather or after heavy rains. Less frequent shock treatments may be made during cool weather. For the shock treatment, add 2 oz. of SUPER CLEARON Concentrated Pool Chlorine per 1000 gallons of pool water. Swimmers should not be permitted in the pool after the shock treatment until the chlorine has reached the 1.0 ppm to 2.0 ppm range.

Keep in mind that a slight flexibility must be maintained in the event of heavy accumulations of dust and dirt caused by storms or super heavy bathing loads which require additional dosages as needed to maintain the chlorine residual between 1.0 ppm and 2.0 ppm.

SUPER CHLORINE TABLETS

should be added daily or as needed at the rate of 1 (one) tablet per 2000 gallons of pool water to maintain a chlorine residual at all times of 1.0 ppm to 2.0 ppm as determined by a suitable test kit. The pH should be maintained between 7.2 and 7.6.

These tablets are slow dissolving and are acidic, and will balance the high pH of pool water in most areas. Water at pH below 7.0 will burn the eyes and may cause corrosion and scale formation to the pool or filtering system. At pH above 8.0 eye irritation also occurs and chlorine effectiveness rapidly diminishes.

NOTICE

Seller makes no warranty, expressed or implied, concerning the use of this product other than indicated on the label. Buyer assumes all risk of use and/or handling of the material when such use and/or handling is contrary to label instructions.

E.P.A. REG. NO. 11329-7"

PACKAGED BY:

ALADDIN CHEMICAL CO.

Highway 152 - P.O. Box 244
Rogers, Minnesota 55374

SUPER CLEARON

CONCENTRATED POOL CHLORINE
FIRE RESISTANT

Active Ingredient:

SODIUM DICHLORO-S-TRIAZINETRIONE 100%
AVAILABLE CHLORINE 53%

NET WT. 10 pounds

ACCEPTED
AUG 5 1974
UNDER THE FEDERAL INSECTICIDE
FUNGICIDE AND RODENTICIDE ACT
FOR ECONOMIC POISON REGISTERED
ED UNDER NO. 11329-8

DANGER KEEP OUT OF REACH OF CHILDREN
SEE FIRST AID AND PRECAUTIONS ON
SIDE PANEL.

SUPER CLEARON

CONCENTRATED POOL CHLORINE
FIRE RESISTANT

INSTRUCTIONS

Keep
it

SUPER-CHLOR

TWO SUPER BALL CONTAINERS
90% CHLORINE TABLETS

AUTOMATIC CHLORINATION FOR
WATER PURIFICATION
90% AVAILABLE CHLORINE

ACTIVE INGREDIENTS: trichloro s-triazinetriene 99.5%
Inert Ingredients: .5%

SEE ENCLOSED INSTRUCTION SHEET FOR USAGE.

ACCEPTED

UNION PACIFIC RAILROAD
FURNISHED TO THE U.S. GOVERNMENT
FOR THE CHLORINATION OF WATER
BY ORDER OF THE U.S. GOVERNMENT

BEST DOGUML



ALADDIN INDUSTRIES
6460 ZANE AVE. N.
MPLS., MINN. 55429

WARNING
KEEP OUT OF REACH OF CHILDREN
Contains very strong oxidizing agent. Keep from heat, flames or moisture. Keep container in cool dry place. DO NOT MIX WITH ANYTHING OTHER THAN WATER IN LARGE QUANTITIES. Mixture with other materials, including algaecides, other chlorine compounds may result in fire or explosion. Keep away from fire, avoid breathing dust or fumes. Avoid contact with skin; flush with water if contact.

POISON
Concentrated Material May Be Fatal If Swallowed! ANTIDOTE: External - Wash with water. Internal - Drink raw egg white, milk or rice gruel. Follow with emetic (Tablespoon of mustard in glass of warm water). Call Physician. HARMFUL TO SKIN AND EYES - In case of contact with eyes, flush with plenty of water for at least 15 minutes, get medical attention. Do not reuse container. Destroy when empty! Net Weight: 6 lbs.

EPA REG. NO. 11329-1

SUPER-CHLOR

TWO SUPER BALL CONTAINERS

90% CHLORINE TABLETS

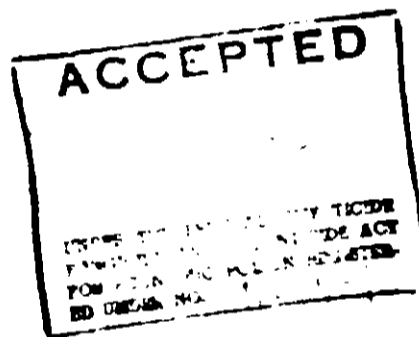
AUTOMATIC CHLORINATION FOR
WATER PURIFICATION

90% AVAILABLE CHLORINE

ACTIVE INGREDIENTS: trichloro s-triazinetriene 99.5%

Inert Ingredients: .5%

SEE ENCLOSED INSTRUCTION SHEET FOR USAGE.



DOGUML

ALADDIN INDUSTRIES
6460 ZANE AVE. N.
MPLS., MINN. 55429

WARNING

KEEP OUT OF REACH OF CHILDREN

Contains very strong oxidizing agent. Keep from heat, flames or moisture. Keep container in cool dry place. DO NOT MIX WITH ANYTHING OTHER THAN WATER IN LARGE QUANTITIES. Mixture with other materials, including algaecides and other chlorine compounds may result in fire or explosion. Keep away from eyes, avoid breathing dust or fumes. Avoid contact with skin; flush with water after contact.

POISON

Concentrated Material May Be Fatal If Swallowed! ANTIDOTE: External - Wash with water. Internal - Drink raw egg white, milk or rice gruel. Follow with emetic (Tablespoon of mustard in glass of warm water). Call Physician. HARMFUL TO SKIN AND EYES - In case of contact with eyes, flush with plenty of water for at least 15 minutes, get medical attention. Do not reuse container. Destroy when empty! Net Weight: 6 lbs.

EPA REG. NO. 11329-1

Super-Chlor

Aladdin INDUSTRIES

6800 Zane Avenue North • Minneapolis, Minnesota 55429 • Phone 822-1100 • Telex 151111

SUPER-CHLOR FOR AUTOMATIC CHLORINATION OF SWIMMING POOLS

9% CHLORINE TABLETS

Active ingredients: Trichloro-s-triazinetrione 99.5%
Inert ingredients: 0.5%

WARNING

KEEP OUT OF REACH OF CHILDREN

Contains very strong oxidizing agent. Keep from heat, flames, sparks. Keep container in cool, dry place. DO NOT MIX WITH ANYTHING OTHER THAN WATER IN LARGE QUANTITIES. Mixture with other materials, including oxidizers and other chlorine compounds may result in fire or explosion. Keep away from eyes, avoid breathing dust or fumes. Avoid contact with skin, flush with water after contact.

POISON

Concentrated Material May Be Fatal if Swallowed.
ANTIDOTE: External: Wash with water. Internal: Drink raw egg white, milk or ice cream. Follow with emetic (1 tablespoon of mustard in glass of warm water). Call physician.
HARMFUL TO SKIN AND EYES — In case of contact with eyes, flush with plenty of water for at least 15 minutes; get medical attention.

See enclosed instruction sheet for usage.
Do not reuse container. Destroy when empty.
Net Weight: 6 lbs. (EPA Reg. No. 1129-1)

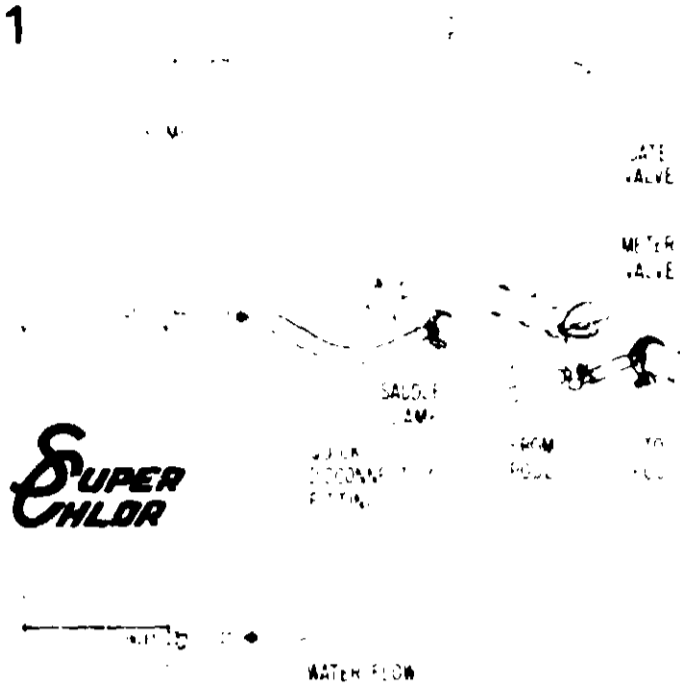
ALADDIN INDUSTRIES
6800 Zane Avenue North
Minneapolis, Minnesota
55429

12-7

11

SUPER-CHLOR INSTRUCTIONS

EXTRA BALLS SHOULD BE STORED IN A COOL DRY AREA

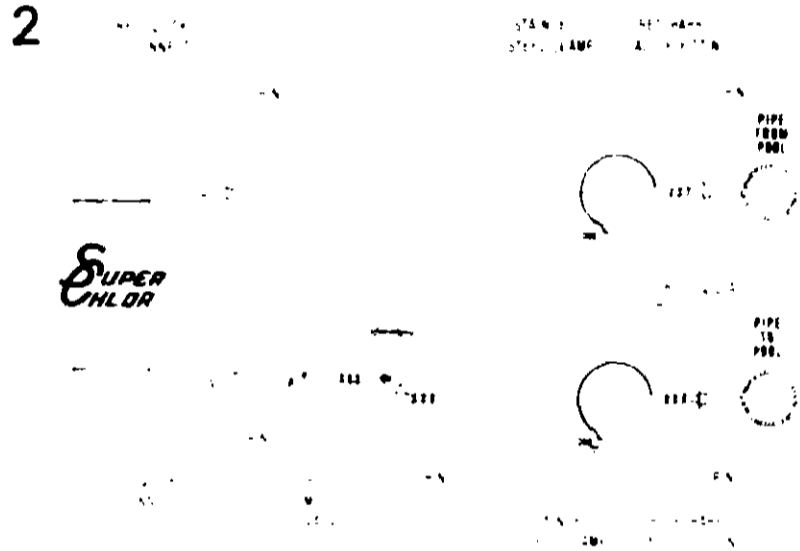


1. WARNING: As shown on the drawings there should be no shut off valves between the pool and the Super Chlor hookup. If there is they should be kept open to allow the gases from the Super Ball to flow freely to the pool when the pump is turned off. If the pool is shut down for repairs or cold weather, disconnect the ball and drain. Store in a cool dry place.

IMPORTANT: Be sure inlet or meter valve line is connected to pipe on pool side of filter to assure clean water going through super ball (as shown on drawing)

2. IMPORTANT: Always follow the color code when installing the Super Chlor kit or replacing the ball. Red to red and blue to blue. Water enters the Super Ball thru the bottom (blue) inlet, flows up thru the tablets and out the top (red) outlet. Keep tubing as short as possible for maximum flow. Connect metering valve to blue inlet line only and as close to pool piping as possible for rigidity.

Tools required: 3/8" drill, screwdriver & knife



ALADDIN INDUSTRIES

6460 Zane Avenue North
 Minneapolis, Minnesota 55429
 Phone 1-612-535-1466

**SEE REVERSE
 SIDE FOR MORE
 DETAILS**